

Coeur d'Alene Lake Lake Management Plan 2005-2009

Location: Coeur d'Alene, Idaho

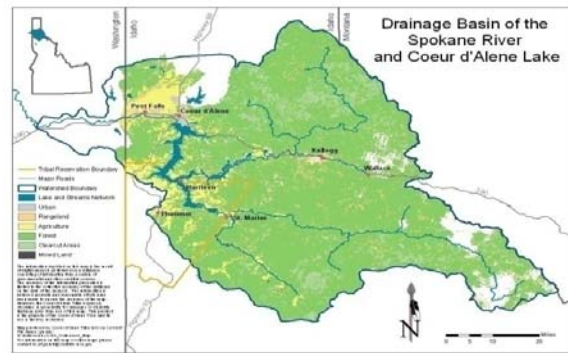
Background Mining upstream of Lake Coeur d'Alene in the Silver Valley has resulted in the deposition of sediments containing zinc, lead, and other dissolved metals around the bottom of the lake.

In 1998, U.S. EPA initiated a Superfund action upstream of the lake at the Bunker Hill Mining and Metallurgical Complex site. Part of that action assumed successful negotiation of a revised Lake Management Plan (LMP) for Lake Coeur d'Alene as a way to address potential issues related to metals in the lake sediments.

The Coeur d'Alene Tribe and the State have cooperated on aspects of lake management but were unable to reach agreement on an updated LMP in 2004. In the fall of 2005 the U.S. Institute partnered with the EPA's Conflict Prevention and Resolution Center to work with representatives of EPA Region 10, the Coeur d'Alene Tribe, and the Idaho Department of Environmental Quality (the Parties) on the feasibility of a negotiated LMP for the lake. The U.S. Institute convened the Parties and selected third party mediator J. Michael Harty to conduct the assessment.

The purpose of the assessment was to better understand sources of impasse in past negotiations, to develop approaches to reduce potential sticking points in negotiations, and to recommend ways to engage other stakeholders in Phase II, negotiation of a draft LMP. The assessment included extensive interviews, an initial report back to the Parties in June 2006, and a final written assessment report with options and a set of recommendations for the Parties in January 2007.

Phase II involved mediated negotiations aimed at reaching agreement among the Parties on a draft LMP. This phase included opportunities for substantial input from and engagement with key stakeholders during negotiations, followed by a subsequent phase involving broader public comment on the draft LMP and efforts to build support for implementation, including funding. Phase II lasted just over a year and concluded when IDEQ and the Tribe reached agreement on a draft 2008 LMP and released that document to the public on June 24, 2008.



Results and Accomplishments

The assessment highlighted that Coeur d'Alene Basin citizens agree broadly on the importance of protecting the lake. This shared agreement was an important part of the foundation to support LMP negotiations and subsequent implementation.

In addition to the draft LMP, the negotiation process improved working relationships and built trust among the Parties. At present, the Parties have agreed to hold quarterly meetings with Kootenai, Benewah and Shoshone counties to address substantive issues raised by the counties. A signing of the LMP is anticipated in the spring of 2009.

Highlights/Innovation

As a result of the LMP negotiation, the Parties and citizens in the Coeur d'Alene Basin have an opportunity to forge a new vision of respectful collaboration as the revised plan is implemented, a vision that reflects the Tribe and the State jurisdiction of the Lake and takes into consideration the Basin's complex terrestrial jurisdictions and authorities in order to maximize the potential for successful lake management.

Credits

Partner from National Roster of ECR Practitioners and Native Dispute Resolution Network

J. Michael Harty, Harty Conflict Consulting & Mediation

U.S. Institute Project Lead

Sarah Palmer, Senior Program Manager
Native American and Alaska Native
Environmental Program

Phone: (520) 901-8556; FAX: (520) 901-8557

Email: palmer@ecr.gov; Website: www.ecr.gov

Information in this summary is taken from: "Assessment Report on Prospects for Mediated Negotiation of a Lake Management Plan for Lake Coeur d'Alene" prepared by J. Michael Harty. The report is available at: <http://ecr.gov/pdf/lakeCA.pdf>