

Pollution Abatement and Control Expenditures, 1972-94

By Christine R. Vogan

REAL SPENDING for pollution abatement and control (PAC) increased 7.3 percent in 1994, compared with a 2.5-percent increase in 1993. The 1994 increase was the largest increase since 1984. Prices of PAC goods and services increased 3.1 percent after increasing 2.6 percent in 1993.

The following are highlights of the PAC estimates for 1994:

- Current-dollar PAC spending was \$121.8 billion in 1994. As a share of gross domestic product (GDP), PAC spending has ranged between 1.7 and 1.8 percent since the mid-1970's.
- Real spending for all major PAC types—air, water, and solid waste—increased. The largest increase was for air PAC, which increased 12.4 percent in 1994 primarily because of increased spending to purchase motor vehicle emission abatement devices as a result of more stringent emission control standards.

- Real spending for pollution abatement (PA), the largest of the three components of PAC, increased 7.6 percent. Spending for research and development increased 6.2 percent, and spending for regulation and monitoring decreased 5.7 percent.
- Real PA spending increased substantially across all sectors of the economy in 1994: Personal consumption (11.8 percent), business (7.4 percent), and government (6.9 percent).
- The 1994 increase in real PA spending by business, which accounts for approximately two-thirds of total PA spending, is the largest increase since 1990.

In addition to the new estimates for 1994, this article presents revised estimates of PAC expenditures for 1972-93.¹ These revised estimates show about the same overall picture of PAC spending throughout the economy as the previous estimates. The revisions to real PAC growth rates

1. The previously published estimates for 1972-86 appeared in the May 1994 issue of the SURVEY OF CURRENT BUSINESS, and those for 1987-93, in the May 1995 issue.

Discontinuation of the PAC Program

BEA's pollution abatement and control program (PAC) is being discontinued. The estimates presented in this article are the last of the annual series. BEA is reallocating resources away from some existing programs in order to move ahead with the most urgent priorities for maintaining and improving the U.S. economic accounts—national, regional, and international—as outlined last year in BEA's Mid-Decade Strategic Plan. In addition to discontinuing the PAC program, BEA has discontinued its regional projections program and has transferred the business cycle indicators to The Conference Board; BEA is also scaling back a joint project with the Bureau of the Census to obtain plant-level data on foreign direct investment in the United States from an annual series to a quinquennial series.

BEA prepared its first set of PAC expenditure estimates in 1975 in response to the growing concern for the environment and the significant levels of public and private spending for PAC. Since then, BEA has produced PAC estimates on an annual basis.

Key Terms

In this article, PAC expenditures are presented by *type* (air, water, solid waste, and other) and by *function* (pollution abatement, regulation and monitoring, and research and development). Over nine-tenths of all PAC spending is for pollution abatement (PA); the rest is for regulation and monitoring and for research and development. PA directly reduces pollutant emissions by preventing the generation of pollutants, by recycling the pollutants, by treating the pollutants prior to discharge, or by restoration (for example, site cleanup). In this article, PA expenditures are presented by *sector* (personal consumption, business, and government). *Regulation and monitoring* is a government activity that stimulates and guides action to reduce pollutant emissions. *Research and development* by business and government not only supports abatement, but also helps to increase the efficiency of regulation and monitoring.

reflect the revisions to current-dollar estimates, the revisions to price estimates, and the introduction of chain-type measures that eliminate the overstatement of real growth for periods after the base year and the understatement of real growth for periods before the base year.

The revisions to the current-dollar PAC estimates mainly reflect the incorporation of newly available and revised source data. The revisions were primarily in nonmanufacturing business spending to operate plant and equipment for water PAC, government spending to construct public sewer systems for water PAC, State and local government spending for solid waste disposal, and government spending for regulation and monitoring.²

The first part of this article examines recent estimates of PAC spending. The second part describes trends in PAC spending. The third

part discusses the revisions to the estimates for 1972–93, and the fourth part discusses the source data used in preparing the estimates.

Recent estimates

Current-dollar spending for PAC increased \$11.8 billion, to \$121.8 billion, in 1994 (table 1 and detail in table 11). The current-dollar shares of each type of PAC remained about the same in 1994 as in 1993. The shares of total PAC spending for each type in 1994 are as follows: Air, 30.9 percent; water, 34.8 percent; solid waste, 34.3 percent; and other PAC, 0.1 percent (chart 1).

Real PAC spending increased 7.3 percent in 1994—more than twice as fast as real GDP in 1994—following a 2.5-percent increase in real PAC spending in 1993. By type, air PAC in 1994 grew faster than total PAC; solid waste and water PAC grew slower (table 2).

Pollution abatement (PA) accounts for over 95.0 percent of all PAC spending. Spending for regulation and monitoring and for research and development accounts for the rest. Within PA, spending for personal consumption accounted for 8.3 percent; business, for 65.2 percent; and government, for 26.6 percent (chart 2). These shares are about the same as those in 1993.

Real PA spending increased 7.6 percent in 1994, following a 2.6-percent increase in 1993 (table 2). The 1994 increase was mainly attributable to a 7.4-percent increase in spending by business. Business spending on capital

2. The government expenditures for pollution abatement and control in this article do not incorporate the new treatment of government investment that was recently introduced in the national income and product accounts.

Table 1.—Change in Real Spending for Pollution Abatement and Control by Type and by Sector

	Percent change from preceding year	
	1993	1994 ^P
Pollution abatement and control	2.5	7.3
Air	7.3	12.4
Water	-2.9	3.4
Solid waste	2.6	6.3
Other and unallocated ¹
Pollution abatement and control	2.5	7.3
Pollution abatement	2.6	7.6
Personal consumption	4.2	11.8
Motor vehicle emission abatement devices	4.2	11.8
Operation of motor vehicle emission abatement devices
Business	1.9	7.4
Capital account	7.0	11.3
Motor vehicle emission abatement devices	9.7	26.2
Plant and equipment	6.4	4.0
Other
Current account	-6	5.3
Operation of motor vehicle emission abatement devices
Operation of plant and equipment	-2.2	6.9
Operation of public sewer systems ²	-2.7	1.2
Costs recovered ³	-18.8	5.8
Other
Government	4.0	6.9
Public sewer system fixed capital ⁴6	5.4
Other
Regulation and monitoring	-11.7	-5.7
Research and development	16.3	6.2

^P Preliminary.
 1. "Other" includes business nonmanufacturing and government spending for abatement and control of noise, radiation, and pesticide pollution; "unallocated" includes business spending not assigned to media.
 2. For consistency with past presentations, spending to operate public sewer systems is classified as business spending.
 3. "Costs recovered" is the value of reclaimed materials and energy from pollution abatement.
 4. For consistency with past presentations, government enterprise purchases of fixed capital (primarily for construction of public sewer systems) is classified as government spending.
 NOTE.—The entries in this table are key components from tables 11 and 12; the "other" entries are consolidations of detail from those tables.

CHART 1

Shares of Current-Dollar Pollution Abatement and Control Expenditures by Type, 1994

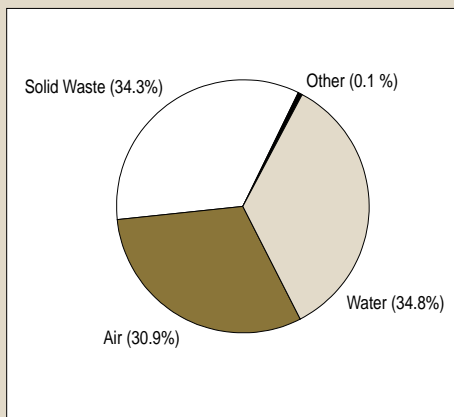
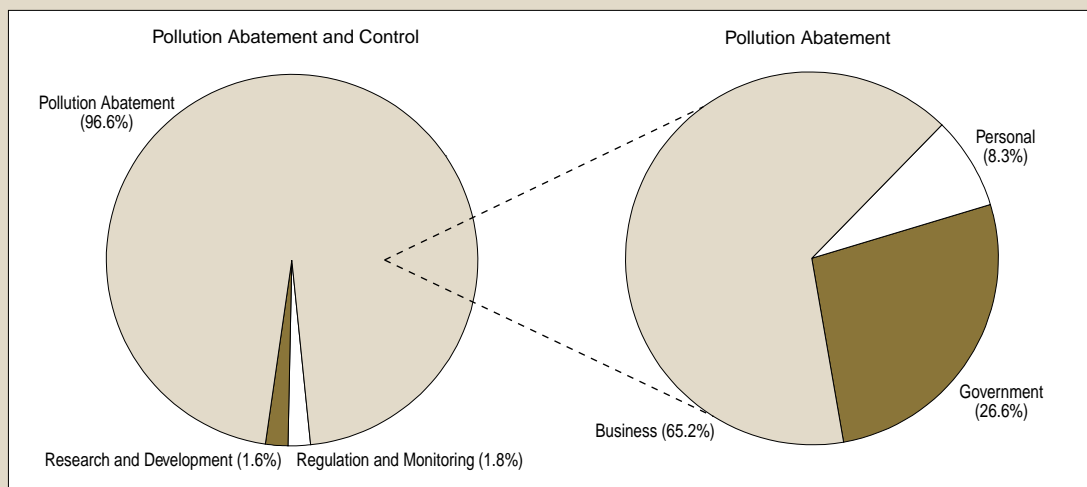


CHART 2

Shares of Current-Dollar Pollution Abatement and Control Expenditures by Function and of Pollution Abatement Expenditures by Sector, 1994



U.S. Department of Commerce, Bureau of Economic Analysis

Table 2.—Current-Dollar Spending for Pollution Abatement and Control by Type and by Sector

	Millions of dollars			Percent change from preceding year	
	1992	1993	1994 ^P	1993	1994 ^P
Pollution abatement and control	104,626	110,052	121,811	5.2	10.7
Air	29,789	32,475	37,597	9.0	15.8
Water	39,065	39,383	42,384	.8	7.6
Solid waste	36,582	38,374	41,736	4.9	8.8
Other and unallocated ¹	-811	-181	94
Pollution abatement and control	104,626	110,052	121,811	5.2	10.7
Pollution abatement	100,461	105,840	117,622	5.4	11.1
Personal consumption	7,897	8,436	9,756	6.8	15.7
Motor vehicle emission abatement devices	7,897	8,436	9,756	6.8	15.7
Operation of motor vehicle emission abatement devices	0	0	0
Business	65,925	69,010	76,631	4.7	11.0
Capital account	22,042	24,103	27,743	9.3	15.1
Motor vehicle emission abatement devices	5,892	6,625	8,649	12.4	30.6
Plant and equipment	14,139	15,338	16,512	8.5	7.7
Other	2,011	2,140	2,582
Current account	43,883	44,908	48,889	2.3	8.9
Operation of motor vehicle emission abatement devices	0	0	0
Operation of plant and equipment	28,628	28,583	31,336	-2	9.6
Operation of public sewer systems ²	11,310	11,596	12,395	2.5	6.9
Costs recovered ³	(1,956)	(1,612)	(1,733)	-17.6	7.5
Other	5,901	6,340	6,891
Government	26,639	28,394	31,234	6.6	10.0
Public sewer system fixed capital ⁴	11,455	11,797	12,825	3.0	8.7
Other	15,184	16,597	18,410
Regulation and monitoring	2,604	2,343	2,201	-10.0	-6.1
Research and development	1,561	1,869	1,989	19.7	6.5

^P Preliminary.

1. "Other" includes business nonmanufacturing and government spending for abatement and control of noise, radiation, and pesticide pollution; "unallocated" includes business spending not assigned to media.

2. For consistency with past presentations, spending to operate public sewer systems is classified as business spending.

3. "Costs recovered" is the value of reclaimed materials and energy from pollution abatement.

4. For consistency with past presentations, government enterprise purchases of fixed capital (primarily for construction of public sewer systems) is classified as government spending.

NOTE.—The entries in this table are key components from tables 11 and 12; the "other" entries are consolidations of detail from those tables.

account increased 11.3 percent, compared with a 10.1-percent increase for total fixed investment within GDP. The 1994 PA increase mainly reflected increased spending for purchases of motor vehicle emission abatement devices, such as catalytic converters, due to more stringent emission control standards. Business spending on current account increased 5.3 percent, reflecting increased spending to operate PA plant and equipment.

Real personal consumption PA spending, which consists of the purchases of motor vehicle emission abatement devices, increased 11.8 percent in 1994. This increase was substantially higher than the 4.4-percent increase for the motor vehicles and parts subcomponent of personal consumption expenditures within GDP. Personal consumption PA spending increased substantially because of the more stringent emission control standards.

Real government PA spending increased 6.9 percent in 1994. The increase mainly reflected an increase in State and local government spending for solid waste disposal and in government enterprise spending for public sewer system fixed capital. In contrast, within GDP, government consumption expenditures and gross investment by State and local government, which includes government enterprises, increased only 2.5 percent.

PAC prices in 1994.—The chain-type price index for total PAC spending increased 3.1 percent in 1994, following a 2.6-percent increase in 1993

1994, following a 2.6-percent increase in 1993 (table 3). Price increases accelerated for all major types—air, water, and solid waste.

PAC shares and growth in 1995.—According to the information available by August 1996, the current-dollar shares of PAC by type and by function and the current-dollar shares of PA by sector are expected to have remained approximately the same in 1995 as in 1994. Growth in real PAC spending is expected to decelerate. Decelerated growth in business and personal consumption spending for motor vehicle emission abatement devices and in business spending to purchase and operate PA plant and equipment, mainly in manufacturing establishments, is expected to offset accelerated growth in business spending to purchase PA plant and equipment, mainly by electric utilities, and to operate public sewer systems.

Trends in PAC spending, 1972–94

PAC shares.—Before 1990, air and water PAC spending accounted for the largest shares of total PAC spending (table 4 and chart 3). After 1990, water and solid waste PAC accounted for the largest shares.

Real growth rates of PAC.—Real PAC spending increased at an average annual rate of 3.6 percent during 1972–94 (table 5). PAC spending grew

faster in 1972–80 and slower in 1980–94 than in 1972–94.

By type, real growth in solid waste PAC spending accelerated faster than total PAC spending in 1972–94. The faster growth in solid waste PAC mainly reflected increased business spending to purchase and operate plant and equipment and increased State and local government spending for solid waste disposal.

Air PAC grew faster than total PAC in 1972–80, reflecting increased personal consumption and business spending to purchase and operate motor vehicle emission abatement devices. It grew more slowly than total PAC in 1980–94, reflecting decreased spending to operate these devices and decreased spending by

Table 3.—Change in Prices for Pollution Abatement and Control

	Percent change from preceding year	
	1993	1994 ^P
Total pollution abatement and control	2.6	3.1
Air	1.6	3.0
Water	3.8	4.1
Solid waste	2.2	2.3

^P Preliminary.

Table 4.—Shares of Pollution Abatement and Control Spending by Function and by Type, Selected Years

[Percent]

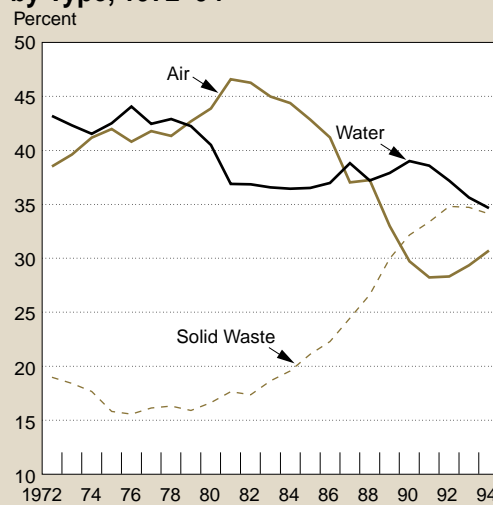
	1972	1980	1994 ^P
Pollution abatement and control	100.0	100.0	100.0
By type:			
Air	38.7	44.0	30.9
Water	43.3	40.7	34.8
Solid waste	19.1	16.8	34.3
Other and unallocated ¹	-1.1	-1.5	.1
By function:			
Pollution abatement	92.9	94.1	96.6
Regulation and monitoring	2.2	2.5	1.8
Research and development	4.9	3.4	1.6

^P Preliminary.

1. "Other" includes business nonmanufacturing and government spending for abatement and control of noise, radiation, and pesticide pollution; "unallocated" includes business spending not assigned to media.

CHART 3

Shares of Current-Dollar Pollution Abatement and Control Expenditures by Type, 1972–94



U. Department of Commerce, Bureau of Economic Analysis

Table 5.—Average Annual Rates of Change for Real Pollution Abatement and Control Spending, Selected Periods

[Percent]

	1972–94	1972–80	1980–94
Pollution abatement and control	3.6	4.5	3.1
By type:			
Air	2.7	5.0	1.5
Water	2.6	4.1	1.7
Solid waste	6.3	4.7	7.2
Other and unallocated ¹	-6.8	2.9	-12.0
By function:			
Pollution abatement	3.8	4.6	3.3
Regulation and monitoring	2.9	7.9	.1
Research and development	-1.6	.8	-2.9

1. "Other" includes business nonmanufacturing and government spending for abatement and control of noise, radiation, and pesticide pollution; "unallocated" includes business spending not assigned to media.

electric utilities—both business and government—to purchase PA plant and equipment.

Water PAC grew more slowly than total PAC in 1972–94, mainly reflecting decreased spending by business to purchase PA plant and equipment and by government to purchase septic systems and their lateral connectors to public sewer systems and slow growth in spending by government to construct public sewer systems and by business to operate these systems.

PA shares by sector.—Business spending accounted for the largest share of total PA spending for all years (table 6 and chart 4). Business spending as a share of total PA spending generally decreased from a high in 1972 to a low in 1988 and then increased almost every year thereafter. Within business, the share spent on capital account generally decreased through 1989 and then increased every year thereafter, mainly reflecting increased spending to purchase plant and equipment. The share spent on current account generally increased through 1990 and then decreased every year thereafter, mainly reflecting slow growth in spending to operate public sewer systems and to operate plant and equipment.

Personal consumption spending as a share of total PA spending generally increased in 1972–85, declined in 1986–92, and increased in 1993–94. The decline mainly reflected a dropoff in the cost of operating motor vehicle emission abatement devices, which started falling in 1986 and reached

zero by 1991.³ The increases in 1993 and 1994 were a result of increased spending to purchase these devices due to the more stringent emission control standards.

Government spending as a share of total PA spending fluctuated through 1986, mainly reflecting spending to construct public sewer systems. After 1986, shares generally rose as a result of sharper increases in State and local government spending for solid waste.

Real growth rates of PA by sector.—Business PA spending grew slower than total PA spending in 1972–94 (table 7); business PA grew slower than total PA in 1972–80 and faster in 1980–94. Personal consumption PA grew slower than total PA in 1972–94, faster than total PA in 1972–80, and slower in 1980–92. Government PA grew faster than total PA in 1972–94 and in both subperiods.

Sources and size of the revisions

The revisions to PAC spending for 1972–93 are statistical in origin; definitions, concepts, and coverage were not changed. Revisions in current-dollar estimates resulted from changes in estimation methodology—that is, new source data or new estimating procedures—and from the incorporation of newly available data from surveys conducted by the Department of Energy, Bureau of the Census, and the Bureau of Economic Analysis; table 8 shows the current-dollar

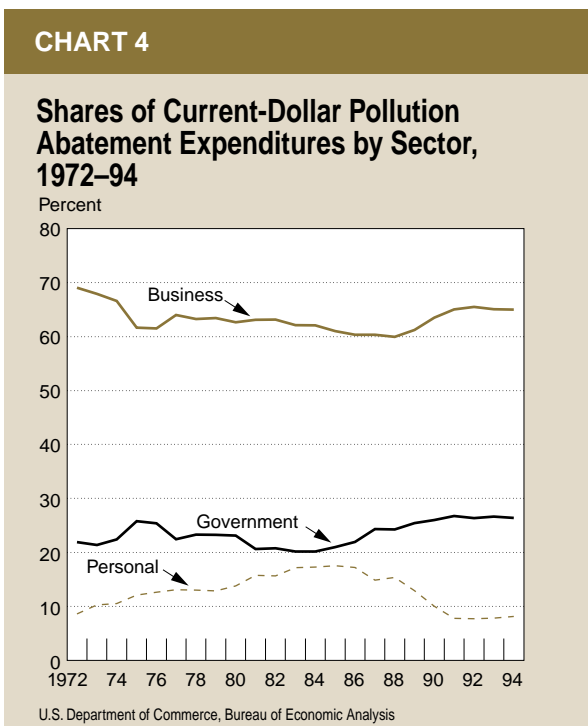


Table 6.—Shares of Pollution Abatement Spending by Sector, Selected Years
[Percent]

	1972	1980	1994 ^P
Pollution abatement	100.0	100.0	100.0
Personal consumption	8.7	13.9	8.3
Motor vehicle emission abatement devices	3.1	7.4	8.3
Operation of these devices	5.7	6.5	0
Business	69.2	62.8	65.2
On capital account	35.9	25.6	23.6
Motor vehicle emission abatement devices	1.4	4.2	7.4
Plant and equipment	26.8	17.6	14.0
Other	7.7	3.9	2.2
On current account	33.3	37.1	41.6
Motor vehicle emission abatement devices	2.7	4.8	0
Plant and equipment	20.8	24.1	26.6
Public sewer systems ¹	7.2	8.2	10.5
Other	2.5	0	4.4
Government	22.1	23.3	26.6
State and local purchases for solid waste disposal	7.4	5.3	12.3
Public sewer systems construction ²	11.8	15.2	10.3
Other	2.9	2.8	4.0

^P Preliminary.
¹ For consistency with past presentations, spending to operate public sewer systems is classified in business spending.
² For consistency with past presentations, government enterprise construction for public sewer systems is classified as government spending.

3. From 1972 to 1990, spending by persons consisted of spending for the operation and for the purchases of emission abatement devices. Since 1991, when the price differential between leaded and unleaded gasoline reached zero, spending has consisted only of purchases of emission abatement devices.

Table 7.—Average Annual Rates of Change for Real Pollution Abatement Spending, Selected Periods
[Percent]

	1972-94	1972-80	1980-94
Pollution abatement	3.8	4.6	3.3
Personal consumption	3.7	9.0	.7
Motor vehicle emission abatement devices	10.0	21.1	4.2
Business	3.4	3.2	3.5
On capital account	2.1	1.2	2.6
Motor vehicle emission abatement devices	13.3	24.1	7.6
Plant and equipment	1.0	0	1.6
Other			
On current account	4.4	5.0	4.1
Motor vehicle emission abatement devices			
Plant and equipment	4.4	5.5	3.7
Residential systems	4.5	1.6	6.2
Public sewer systems ¹	5.5	6.1	5.2
Other			
Government	4.8	6.8	3.6
State and local purchases for solid waste disposal	6.1	2.4	8.3
Public sewer systems construction ²	3.4	9.6	0
Other			

1. For consistency with past presentations, spending to operate public sewer systems is classified in business spending.
2. For consistency with past presentations, government enterprise construction for public sewer systems is classified as government spending.

revisions for 1972, 1980, and 1993. Revisions to real growth rates incorporate current-dollar revisions and improved measures of Fisher chain-type price indexes; [table 9](#) shows the revisions to real growth rates for 1972-93, for 1972-80, and for 1980-93.

Current-dollar revisions.—The revisions to total PAC spending were small before 1991. The revisions were mostly downward for 1972-78; the largest revision was \$0.1 billion for 1975. The revisions were upward for 1979-93; the smallest revision was \$0.2 billion for 1979, and the largest revision was \$2.8 billion for 1992.

Revisions to real growth rates.—For 1972-93, the revision to the real growth rate of total PAC spending was 0.1 percent. The revisions to all the components of PAC by type and by function except for other PAC and for regulation and monitoring were less than 0.3 percent. The revision to the real growth rate of total PA spending was 0.1 percent.

Table 8.—Revisions to Current-Dollar Pollution Abatement and Control Spending by Type and by Function, Selected Years
[Millions of dollars]

	1972			1980			1993		
	Previously published	Revised	Revision	Previously published	Revised	Revision	Previously published	Revised	Revision
Pollution abatement and control	16,586	16,635	49	50,399	50,763	364	109,044	110,052	1,008
By type:									
Air	6,453	6,432	-21	22,258	22,353	95	31,902	32,475	573
Water	7,138	7,208	70	20,616	20,638	22	39,015	39,383	368
Solid waste	3,183	3,183	0	8,278	8,524	246	38,844	38,374	-470
Other and unallocated ¹	-187	-187	0	-752	-752	0	-717	-181	536
By function:									
Pollution abatement	15,397	15,446	49	47,352	47,753	401	105,386	105,840	454
Regulation and monitoring	367	367	0	1,296	1,259	-37	1,924	2,343	419
Research and development	823	823	0	1,751	1,751	0	1,734	1,869	135

1. "Other" includes business nonmanufacturing and government spending for abatement and control of noise, radiation, and pesticide pollution; "unallocated" includes business spending not assigned to media.

Table 9.—Revisions to Average Annual Rates of Change of Real Pollution Abatement and Control Spending by Type and by Function, Selected Periods
[Percent]

	1972-93			1972-80			1980-93		
	Previously published	Revised	Revision	Previously published	Revised	Revision	Previously published	Revised	Revision
Pollution abatement and control	3.3	3.4	0.1	4.5	4.5	0	2.6	2.8	0.2
By type:									
Air	2.0	2.3	.3	4.7	5.0	.3	.5	.7	.2
Water	2.6	2.5	-.1	4.5	4.1	-.4	1.5	1.5	0
Solid waste	6.2	6.3	.1	4.2	4.7	.5	7.5	7.3	-.2
Other and unallocated ¹	1.6	-4.5	-6.0	2.0	2.9	.9	1.3	-8.8	-10.1
By function:									
Pollution abatement	3.5	3.6	.1	4.6	4.6	0	2.9	3.0	.1
Regulation and monitoring	2.6	3.3	.7	8.7	7.9	-.8	-.9	.6	1.5
Research and development	-2.1	-1.9	.2	.8	.8	0	-3.9	-3.6	.3

1. "Other" includes business nonmanufacturing and government spending for abatement and control of noise, radiation, and pesticide pollution; "unallocated" includes business spending not assigned to media.

For 1972–80, there was no revision to the growth rate of total PAC spending. Downward revisions to business spending to purchase and operate plant and equipment for air and water PAC were mainly offset by upward revisions to personal consumption and business spending to operate motor vehicle emission abatement devices for air PAC and business spending for solid waste PAC. The downward revision to the growth rate for regulation and monitoring for 1972–80 was due to downward revisions to spending for 1980 and did not significantly affect the revisions to total PAC.

For 1980–93, the upward revisions to the growth rates of total PAC spending mainly reflected upward revisions to government spending to construct public sewer systems and to Federal Government spending for air, water, and solid waste PAC. The downward revision to the growth rate for solid waste was due to a downward revision to spending by State and local government for solid waste disposal for 1993. The downward revision to the growth rate for other PAC spending was due to downward revisions to Federal Government spending for PA and to downward revisions to business costs recovered (a negative cost).⁴

Sources of the estimates

Some estimates of PAC expenditures are based directly on data from surveys or censuses; others are prepared by indirect methods. PAC estimates derived from direct sources account for about two-thirds of the revised estimates of total PAC spending; the remainder is based on other

4. "Costs recovered" is the value of reclaimed materials and energy from pollution abatement.

Table 10.—Sources of Pollution Abatement and Control Expenditures for 1994, by Type of Estimate

[Percent of total expenditures]

Surveys	64
Government Finances, BOC	22
Pollution Abatement Costs and Expenditures (MA-200), BOC	21
Value of New Construction Put in Place, BOC	10
Federal Funding for Pollution Control, BEA	5
Structures and Equipment Expenditures Survey—Supplement for Pollution Abatement, BOC	5
Steam-Electric Plant Operation and Design Report, DOE	2
Other sources	36
Motor vehicle emission abatement devices	15
Nonmanufacturing and residential customers' spending for solid waste disposal	14
Nonmanufacturing operation and maintenance for pollution abatement, air and water	2
Residential systems water pollution abatement investment and operation Nonmanufacturing plant and equipment, air and water	2
Electric utilities—extra cost of cleaner fuel	1
All other	2

BOC Bureau of Census
BEA Bureau of Economic Analysis
DOE Department of Energy

Acknowledgments

Preparation of the estimates was a division-wide effort, supervised by Ann M. Lawson of the Environmental Economics Division. Christine R. Vogan coordinated preparation of the article. Mary L. Roy coordinated the preparation of the estimates and assisted in the analysis of the data. R. Christian Thieme provided computer programming support. The following staff members contributed to the preparation of the estimates: Personal consumption—Frederick G. Kappler; business—Frederick G. Kappler, Jon P. McCracken, Edward J. Moulis, Mary L. Roy, R. Christian Thieme, and Christine R. Vogan; and government—Jon P. McCracken, Edward J. Moulis, Mary L. Roy, and Christine R. Vogan. Shirley D. Tisdale provided statistical services, and Sonia R. Jones provided secretarial services.

sources that provide more general survey information and on assumptions made to use this information. Table 10 shows the breakdown of the sources for PAC spending by type of estimate for 1994.

Surveys.—The most important direct sources are the Pollution Abatement Costs and Expenditures (PACE) Survey (for capital and operating spending by manufacturing establishments) and surveys of government finances (for government spending to operate sewer systems and for solid waste disposal) and of new construction put in place (for government spending to construct sewer systems). These key surveys, as well as the Structures and Equipment Expenditures Survey—Supplement for Pollution Abatement (for electric utilities and, to a lesser extent, for mining and petroleum enterprises), are conducted by the Bureau of the Census.⁵ In addition, the Bureau of Economic Analysis (BEA) collects data on Federal agency funding for PAC and information from the Environmental Protection Agency (EPA) regional offices on State and local government spending for regulation and monitoring. Finally, BEA relies on the Energy Information Agency of the U.S. Department of Energy to collect data on PA operating spending by electric utilities from its Steam-Electric Plant Operation and Design Report.

Other sources.—About two-fifths of PAC spending estimates that are derived by indirect methods are accounted for by nonmanufacturing and residential customers' spending for solid waste disposal. Data sources provide only sketchy information

5. The PACE Survey and the Supplement to the Structures and Equipment Expenditures Survey have been discontinued after collecting data for 1994.

on purchases of solid waste disposal services by customer types. The indirect method compares a variety of data sources to discern and reconcile, to the extent possible, the relationship between purchasers' and suppliers' data. This process of comparison, fitting, and reconciliation is aided by taking into account information for manufacturing establishments (which also purchase services from refuse companies) as well as for nonmanufacturing establishments and residential customers, and it relies heavily on the following information: (1) Refuse-industry (that is, supplier) payroll data from the Bureau of Labor Statistics (BLS), (2) PACE survey data on manufacturing purchases on private contract, and (3) partial information on waste flows by type (that is, information about demand) and disposal services provided (that is, information about supply) from EPA one-time studies, refuse company annual reports, and trade association contacts and reports.

Most of the remainder of PAC spending is attributable to indirect estimation of spending for motor vehicle emission abatement devices.⁶ Information on unit sales of motor vehicles is from the American Automobile Manufacturers Association of the United States, Inc., and the dollar value per emission abatement device at the time of purchase is derived from selected BLS information.

Nonmanufacturing operation and maintenance spending for PA (excluding electric utilities) is estimated in relation to nonmanufacturing air and water PA plant and equipment (P&E) stocks that are being operated. The key assumption is that the ratio of operating spending to stocks for manufacturing establishments can be applied to the stocks of nonmanufacturing establishments to determine operating expenses. These nonmanufacturing PA P&E stocks (excluding electric utilities) are estimated using a perpetual inventory method. Nonmanufacturing PA P&E spending es-

6. Prior to 1991, when there was a price differential between leaded and unleaded gasoline, PAC spending also included the operation of motor vehicle emission abatement devices. Components of operating spending were based on information from a variety of sources, including studies by EPA (for the fuel consumption penalty and maintenance cost for pre-1975 model year vehicles), data from BLS (for the prices of unleaded and leaded gasoline and the amount of unleaded gasoline purchases to which the fuel price penalty applies), and data from R.L. Polk, Inc. (for the inventory, or stock, of motor vehicles by model year). Factors for the allocation of spending between consumers and business were developed by BEA.

Data Availability

The estimates shown in tables 11 and 12 are available in electronic form to STAT-USA subscribers (Economic Bulletin Board and Internet site). To subscribe, call STAT-USA at (202) 482-1986.

The estimates are also available in printouts. To obtain an order form with their cost and schedule, and the cost of related material, write to the Industry Economics Division (BE-51), Bureau of Economic Analysis, U.S. Department of Commerce, Washington DC 20230, or call (202) 606-5350.

timates, the starting point for use of the perpetual inventory method, are derived using a variety of data sources, including the PA supplement to the structures and equipment survey mentioned earlier, an environmental protection expenditures survey by the American Petroleum Institute, the *Census of Mineral Industries*, and information about relationships between company-based and establishment-based data.

Estimates of residential systems water PA spending consist of purchases of septic systems and laterals and spending for cleaning septic systems. Data sources for these estimates include surveys of housing conducted by the Census Bureau; related construction activity indicators, such as housing permits and housing starts; and information from telephone contacts with technical experts about the cost of installing and cleaning PA residential systems.

The extra cost of cleaner fuel used by electric utilities that adopt a fuel-switching strategy to lessen emissions is estimated primarily from information on the cost and quality of oil and coal that utilities consume, which is reported by the Energy Information Agency in *Electric Power Monthly*.

Notable among the remaining sources is the indirect method used to estimate private purchases for research and development (R&D) PA spending. This method uses data on total R&D spending from the Industrial Research and Development Survey by the National Science Foundation (NSF) to extrapolate R&D spending for PAC types. Newly available NSF data providing partial coverage of PAC for 1984 and for 1989-93 have reduced reliance on extrapolation.


Tables 11 and 12 follow. 

Table 11.—Expenditures for Pollution Abatement and Control by Sector and by Type, in Current Dollars and Chain-Type Quantity and Price Indexes, 1972-94

Line	1972					1973					1974					
	Total ¹	Air	Water	Solid waste	Other and unallocated ²	Total ¹	Air	Water	Solid waste	Other and unallocated ²	Total ¹	Air	Water	Solid waste	Other and unallocated ²	
Millions of dollars																
1	16,635	6,432	7,208	3,183	-187	19,325	7,683	8,206	3,589	-153	23,433	9,683	9,767	4,176	-193	
2	Pollution abatement	15,446	5,758	6,921	3,141	-375	17,932	6,935	7,848	3,541	-392	21,850	8,901	9,368	4,114	-533
3	Personal consumption	1,350	1,350				1,867	1,867				2,331	2,331			
4	Durable goods ³	473	473				679	679				702	702			
5	Nondurable goods ⁴	877	877				1,188	1,188				1,630	1,630			
6	Business	10,687	4,290	4,779	1,997	-379	12,202	4,966	5,372	2,263	-398	14,585	6,442	6,008	2,672	-537
7	On capital account	5,549	2,633	2,660	256		6,178	2,979	2,860	339		7,103	3,696	3,005	403	
8	On current account	5,139	1,657	2,119	1,741	-379	6,024	1,986	2,511	1,924	-398	7,482	2,746	3,003	2,270	-537
9	Private	4,374	1,634	999	1,741		5,080	1,957	1,199	1,924		6,389	2,689	1,430	2,270	
10	Government enterprise ⁵	1,144	23	1,121	(*)	(*)	1,342	29	1,313	(*)	(*)	1,632	57	1,573	(*)	2
11	Costs recovered ⁶	-379				-379	-398				-398	-538				-538
12	Government	3,409	119	2,143	1,144	3	3,863	102	2,477	1,278	6	4,934	128	3,360	1,442	4
13	Federal	139	56	75	5	3	203	47	133	16	6	294	56	196	39	4
14	State and local	1,311	(*)	171	1,140	(*)	1,433	(*)	171	1,262	(*)	1,592	(*)	189	1,403	(*)
15	Government enterprise purchases of fixed capital ⁵	1,959	63	1,896			2,227	54	2,172			3,048	72	2,976		
16	Regulation and monitoring	367	143	144	14	66	490	165	190	18	117	595	183	247	27	138
17	Federal	200	48	79	9	64	278	50	99	14	115	346	52	135	22	138
18	State and local	167	95	66	5	2	212	115	91	4	2	248	131	112	5	(*)
19	Research and development	823	531	142	27	122	903	583	168	30	122	988	599	153	35	202
20	Private	519	411	64	12	32	569	451	73	10	35	608	492	57	13	46
21	Federal	205	104	34	6	62	269	126	62	11	69	342	100	78	17	146
22	State and local	99	17	44	10	28	65	6	33	9	18	39	7	18	5	9
Chain-type quantity indexes, 1992=100																
23	Pollution abatement and control	50.4	66.5	57.5	28.7	60.4	53.6	73.8	58.4	30.0	37.9	55.5	75.1	61.1	31.3	33.0
24	Pollution abatement	48.8	63.0	56.8	28.9	67.3	51.7	70.5	57.3	30.3	60.6	53.6	72.2	60.2	31.5	67.9
25	Personal consumption	52.9	52.9				68.7	68.7				68.7	68.7			
26	Durable goods ³	14.2	14.2				20.3	20.3				19.8	19.8			
27	Nondurable goods ⁴															
28	Business	52.5	67.8	61.1	28.1	56.3	54.3	72.6	60.2	29.6	51.2	55.1	75.1	59.4	31.3	56.8
29	On capital account	75.4	59.2	137.0	23.6		75.4	64.2	123.1	29.8		76.4	69.1	115.9	31.7	
30	On current account	40.5	83.6	35.9	28.8	56.3	43.4	87.8	39.5	29.4	51.2	44.1	85.9	41.0	31.1	56.8
31	Private	45.0	84.5	45.5	28.8		47.2	88.8	48.9	29.4		48.2	86.8	52.2	31.1	
32	Government enterprise ⁵	30.7	50.7	30.3	18.5		33.9	52.7	33.5	17.0		34.8	53.9	34.4	30.5	
33	Costs recovered ⁶	56.3				56.3	51.2				51.2	56.9			56.9	
34	Government	39.9	44.9	49.4	30.5	2.7	41.7	36.2	52.4	31.6	4.7	46.9	37.7	62.1	31.9	2.5
35	Federal	21.1	70.8	20.9	2.8	4.9	27.8	55.2	32.8	9.3	8.6	34.7	52.2	42.3	19.8	4.6
36	State and local	33.5	1	97.0	31.8	.3	33.9	2	87.7	32.6	.3	33.3	2	77.3	32.5	.1
37	Government enterprise purchases of fixed capital ⁵	50.9	112.9	49.9			53.4	93.4	52.7			64.1	105.0	63.4		
38	Regulation and monitoring	44.5	56.7	49.6	7.1	78.3	55.7	60.6	61.8	8.5	131.0	60.8	61.5	69.8	11.7	142.9
39	Federal	53.1	61.5	55.1	12.2	81.5	69.8	60.4	65.4	17.6	138.7	60.0	57.6	82.1	24.9	152.7
40	State and local	37.1	54.5	43.8	3.8	37.9	43.7	60.6	57.5	2.7	29.0	44.6	63.1	57.7	3.2	6.1
41	Research and development	175.5	239.8	265.4	54.0	84.7	181.2	247.5	295.7	55.6	79.6	178.8	228.4	242.9	59.4	119.3
42	Private	319.5	320.8	395.1	370.4	215.4	329.3	331.3	424.8	275.6	220.7	315.5	323.8	295.6	340.9	260.5
43	Federal	71.2	114.8	114.9	12.6	49.6	87.9	131.2	199.3	24.3	52.5	101.1	94.5	225.6	33.1	100.2
44	State and local	515.9	396.5	582.3	287.5	711.0	320.0	131.3	405.3	250.2	418.6	177.4	140.1	204.4	127.5	208.2
Chain-type price indexes, 1992=100																
45	Pollution abatement and control	31.5	32.5	32.1	30.4	38.3	34.5	34.9	36.0	32.7	49.8	40.4	43.3	40.9	36.5	72.0
46	Pollution abatement	31.5	32.4	32.1	30.3	35.8	34.5	34.9	36.1	32.7	41.5	40.6	43.7	41.0	36.5	50.3
47	Personal consumption	32.3	32.3				34.4	34.4				43.0	43.0			
48	Durable goods ³	42.2	4.2				42.3	42.3				44.8	44.8			
49	Nondurable goods ⁴															
50	Business	30.9	32.4	31.5	30.2	34.4	34.1	35.0	35.9	32.5	39.8	40.1	43.9	40.7	36.3	48.3
51	On capital account	33.4	35.8	31.6	31.2		37.2	37.4	37.8	32.6		42.2	43.1	42.2	36.5	
52	On current account	28.9	27.9	31.6	30.1	34.4	31.7	31.8	34.0	32.6	39.8	38.7	44.9	39.2	36.4	48.3
53	Private	28.3	27.9	29.9	30.1		31.4	31.8	32.8	32.6		38.6	44.8	37.4	36.4	
54	Government enterprise ⁵	32.4	23.9	32.7	30.1		34.4	29.2	34.6	32.6		40.7	55.5	40.4	36.4	
55	Costs recovered ⁶	34.4				34.4	39.8				39.8	48.3			48.3	
56	Government	32.0	32.9	33.0	30.5	31.3	34.7	35.1	35.9	32.9	34.5	39.5	42.4	41.1	36.8	40.2
57	Federal	30.7	31.4	31.2	30.9	31.2	34.1	34.1	35.3	33.0	34.4	39.6	42.7	40.2	36.9	40.1
58	State and local	30.4	42.4	32.8	30.5	31.5	32.9	42.5	36.2	33.0	34.7	37.1	44.9	45.3	36.7	40.4
59	Government enterprise purchases of fixed capital ⁵	33.1	35.6	33.1			35.9	37.3	36.0			40.9	43.9	40.9		
60	Regulation and monitoring	31.6	30.8	31.5	33.6	30.7	33.8	33.4	33.4	35.5	32.5	37.6	36.3	38.4	38.9	35.4
61	Federal	30.4	30.4	30.4	30.4	30.4	32.2	32.2	32.2	32.2	32.2	35.0	35.0	35.0	35.0	35.0
62	State and local	32.8	31.0	33.0	36.0	34.0	35.5	34.0	35.0	38.0	36.0	40.8	37.0	43.0	43.0	40.0
63	Research and development	30.0	29.8	30.2	30.2	30.4	31.9	31.7	32.0	32.1	32.3	35.4	35.3	35.4	35.4	35.7
64	Private	29.7	29.7	29.7	29.7	29.7	31.6	31.6	31.6	31.6	31.6	35.3	35.3	35.3	35.3	35.3
65	Federal	30.3	30.3	30.3	30.3	30.3	32.2	32.2	32.2	32.2	32.2	35.6	35.6	35.6	35.6	35.6
66	State and local	29.6	29.6	29.6	29.6	29.6	31.2	31.2	31.2	31.2	31.2	33.7	33.7	33.7	33.7	33.7
Addendum: Business capital consumption allowances: ⁷																
67	Valued at replacement cost in current dollars	1,861					2,349					2,918				
68	Chain-type quantity index, 1992=100	40.1					44.9					49.5				
69	Chain-type price index, 1992=100	31.9					36.0					40.6				

See footnotes at end of table.

Table 11.—Expenditures for Pollution Abatement and Control by Sector and by Type, in Current Dollars and Chain-Type Quantity and Price Indexes, 1972–94—Continued

Line	1975					1976					1977					
	Total ¹	Air	Water	Solid waste	Other and unallocated ²	Total ¹	Air	Water	Solid waste	Other and unallocated ²	Total ¹	Air	Water	Solid waste	Other and unallocated ²	
Millions of dollars																
1	28,302	11,923	12,073	4,523	-218	31,803	13,025	14,061	5,000	-283	35,104	14,716	14,955	5,718	-285	
2	Pollution abatement	26,545	11,135	11,622	4,449	-669	29,799	12,142	13,554	4,934	-831	32,794	13,671	14,386	5,640	-903
3	Personal consumption	3,245	3,245				3,806	3,806				4,343	4,343			
4	Durable goods ³	1,384	1,384				1,863	1,863				2,211	2,211			
5	Nondurable goods ⁴	1,861	1,861				1,943	1,943				2,133	2,133			
6	Business	16,406	7,679	6,557	2,863	-692	18,377	8,112	7,901	3,251	-887	21,038	9,013	9,167	3,823	-965
7	On capital account	7,882	4,432	3,045	405		8,561	4,401	3,703	457		9,436	4,631	4,210	596	
8	On current account	8,524	3,247	3,512	2,458	-692	9,816	3,710	4,198	2,794	-887	11,602	4,382	4,958	3,227	-965
9	Private	7,326	3,202	1,666	2,457		8,449	3,653	2,002	2,794		9,913	4,322	2,364	3,227	
10	Government enterprise ⁵	1,892	45	1,846	(*)	1	2,255	58	2,196	(*)	1	2,655	60	2,594	(*)	1
11	Costs recovered ⁶	-693				-693	-887				-887	-966				-966
12	Government	6,894	211	5,073	1,587	23	7,617	225	5,653	1,684	56	7,412	314	5,219	1,817	62
13	Federal	432	88	271	50	23	469	105	257	52	56	490	106	279	43	62
14	State and local	1,748	1	210	1,537	(*)	1,837	1	204	1,632	(*)	1,963	1	188	1,774	(*)
15	Government enterprise purchases of fixed capital ⁵	4,715	123	4,592			5,311	119	5,192			4,960	208	4,752		
16	Regulation and monitoring	653	206	279	32	136	725	203	328	28	167	833	241	370	39	182
17	Federal	381	66	153	26	136	402	69	151	21	162	429	80	146	26	177
18	State and local	272	139	126	6	(*)	323	135	177	7	5	404	161	224	14	5
19	Research and development	1,104	583	164	42	316	1,279	680	180	39	381	1,478	804	199	39	436
20	Private	609	466	68	21	53	706	543	78	20	65	849	654	91	21	83
21	Federal	448	108	77	15	248	528	131	84	14	299	578	144	90	14	330
22	State and local	47	8	19	6	14	45	6	18	4	17	51	7	18	4	23
Chain-type quantity indexes, 1992=100																
23	62.0	84.6	70.7	31.5	35.2	65.9	88.5	77.0	32.8	45.2	68.1	94.0	76.2	35.5	44.5	
24	Pollution abatement	60.3	82.7	69.9	31.7	78.6	64.0	86.5	76.2	33.1	93.4	66.0	91.6	75.2	35.8	96.0
25	Personal consumption	88.9	88.9				99.1	99.1				107.2	107.2			
26	Durable goods ³	36.0					45.5	45.5				51.3	51.3			
27	Nondurable goods ⁴															
28	Business	56.6	81.4	59.1	31.1	67.6	60.1	82.8	66.5	33.3	82.7	64.3	86.2	71.7	37.0	85.1
29	On capital account	77.4	74.7	109.8	27.9		80.0	71.6	125.0	29.3		82.8	71.1	132.9	35.2	
30	On current account	45.9	93.5	42.7	31.6	67.6	49.9	102.6	47.5	33.9	82.7	54.9	112.4	51.9	37.2	85.1
31	Private	51.0	95.0	55.0	31.6		55.8	104.0	61.8	33.9		61.1	114.2	67.4	37.2	
32	Government enterprise ⁵	35.6	41.7	35.4	28.6		39.4	53.4	39.1	27.0		42.9	51.3	42.7	25.7	
33	Costs recovered ⁶	67.6				67.6	82.8				82.8	85.1				85.1
34	Government	62.9	55.3	91.3	32.8	13.6	65.3	58.2	95.4	32.7	30.7	59.5	76.4	82.2	33.5	31.8
35	Federal	47.8	73.8	55.8	23.4	25.8	49.0	84.2	49.8	22.7	58.2	47.6	79.3	50.3	17.7	60.2
36	State and local	34.3	3	83.5	33.3	1	34.1	4	80.7	33.2	2	34.3	3	66.0	34.2	1
37	Government enterprise purchases of fixed capital ⁵	96.5	159.1	95.4			101.8	156.6	100.8			88.9	257.6	86.2		
38	Regulation and monitoring	62.4	64.0	75.2	12.9	128.8	65.6	59.2	84.1	10.5	150.2	69.7	65.5	87.5	13.8	151.4
39	Federal	80.8	68.0	85.5	26.9	138.1	81.0	66.6	80.0	20.2	157.1	79.8	72.0	71.6	23.2	158.6
40	State and local	46.8	62.2	64.7	4.0	4.2	52.4	55.8	86.7	4.2	60.0	60.6	62.6	100.9	7.7	57.7
41	Research and development	180.4	200.5	236.8	63.8	168.8	195.9	219.0	243.1	55.5	191.4	211.3	241.7	250.7	52.3	204.6
42	Private	284.6	276.7	318.8	487.6	271.3	308.8	301.3	341.5	438.4	309.2	346.6	338.8	372.9	429.8	367.2
43	Federal	120.0	92.5	202.3	25.6	153.8	132.9	104.7	207.0	23.7	174.2	135.7	107.4	206.0	22.0	179.6
44	State and local	199.1	151.8	202.0	148.6	287.5	178.9	111.9	178.1	94.2	324.5	190.0	108.5	166.5	78.0	418.0
Chain-type price indexes, 1992=100																
45	43.6	47.3	43.7	39.2	76.2	46.2	49.4	46.7	41.7	77.3	49.3	52.6	50.2	44.1	79.1	
46	Pollution abatement	43.8	47.7	43.8	39.2	54.6	46.3	49.7	46.9	41.6	57.1	49.4	52.9	50.4	44.0	60.4
47	Personal consumption	46.2	46.2				48.6	48.6				51.3	51.3			
48	Durable goods ³	48.7	48.7				51.9	51.9				54.6	54.6			
49	Nondurable goods ⁴															
50	Business	44.0	48.3	44.7	39.1	52.4	46.4	50.2	47.9	41.5	54.8	49.6	53.5	51.5	43.9	58.0
51	On capital account	46.2	47.8	45.1	41.7		48.5	49.5	48.2	44.8		51.7	52.4	51.5	48.6	
52	On current account	42.3	48.8	44.1	38.8	52.4	44.9	50.9	47.3	41.1	54.8	48.2	54.8	51.2	43.3	58.0
53	Private	41.9	48.7	41.3	38.8		44.1	50.7	44.2	41.1		47.2	54.7	47.8	43.3	
54	Government enterprise ⁵	46.2	57.2	46.0	38.8		49.7	57.3	49.6	41.1		53.7	61.7	53.6	43.2	
55	Costs recovered ⁶	52.4				52.4	54.8				54.8	58.0				58.0
56	Government	41.1	47.5	42.2	39.4	43.1	43.8	48.0	45.0	41.9	45.7	46.8	51.2	48.3	44.2	49.0
57	Federal	42.2	47.3	42.1	40.5	43.0	44.7	49.5	44.9	43.1	45.6	48.0	53.2	48.2	46.0	48.9
58	State and local	39.6	48.8	46.8	39.3	43.4	41.8	51.9	46.9	41.8	46.1	44.5	54.6	52.9	44.1	49.4
59	Government enterprise purchases of fixed capital ⁵	42.0	49.5	42.0			44.9	48.7	44.9			48.0	51.6	48.0		
60	Regulation and monitoring	40.2	39.4	40.2	42.4	38.5	42.4	42.0	42.2	44.5	40.5	45.9	45.1	45.9	48.4	43.9
61	Federal	38.1	38.1	38.1	38.1	38.1	40.1	40.1	40.1	40.1	40.1	43.4	43.4	43.4	43.4	43.4
62	State and local	42.5	40.0	43.0	47.0	44.0	45.1	43.0	45.0	49.0	46.0	48.7	46.0	49.0	53.0	50.0
63	Research and development	39.2	39.1	39.1	39.1	39.4	41.8	41.8	41.7	41.7	42.0	44.8	44.7	44.7	44.6	45.0
64	Private	39.1	39.1	39.1	39.1	39.1	41.9	41.9	41.9	41.9	41.9	44.8	44.8	44.8	44.8	44.8
65	Federal	39.3	39.3	39.3	39.3	39.3	41.8	41.8	41.8	41.8	41.8	44.8	44.8	44.8	44.8	44.8
66	State and local	36.6	36.6	36.6	36.6	36.6	39.1	39.1	39.1	39.1	39.1	41.6	41.6	41.6	41.6	41.6
Addendum: Business capital consumption allowances: ⁷																
67	Valued at replacement cost in current dollars	3,640					4,257					4,887				
68	Chain-type quantity index, 1992=100	55.4					60.7					65.1				
69	Chain-type price index, 1992=100	45.2					48.3					51.7				

See footnotes at end of table.

Table 11.—Expenditures for Pollution Abatement and Control by Sector and by Type, in Current Dollars and Chain-Type Quantity and Price Indexes, 1972–94—Continued

Line	1978					1979					1980				
	Total ¹	Air	Water	Solid waste	Other and unallocated ²	Total ¹	Air	Water	Solid waste	Other and unallocated ²	Total ¹	Air	Water	Solid waste	Other and unallocated ²
	Millions of dollars														
1	Pollution abatement and control														
2	39,495	16,382	17,001	6,505	-393	45,269	19,395	19,191	7,275	-592	50,763	22,353	20,638	8,524	-752
3	36,898	15,163	16,366	6,414	-1,055	42,426	18,059	18,520	7,150	-1,304	47,753	21,024	19,945	8,315	1,531
4	4,849	4,849				5,518	5,518				6,654	6,654			
5	2,506	2,506				2,855	2,855				3,552	3,552			
6	2,343	2,343				2,663	2,663				3,102	3,102			
7	23,396	10,100	9,996	4,374	-1,075	26,967	12,204	11,219	4,904	-1,359	29,986	13,998	11,880	5,717	-1,610
8	10,015	5,095	4,326	594		11,530	6,089	4,664	776		12,248	6,811	4,577	860	
9	13,381	5,005	5,670	3,781	-1,075	15,437	6,114	6,555	4,127	-1,359	17,737	7,187	7,303	4,857	-1,610
10	11,396	4,933	2,683	3,780		13,283	6,012	3,144	4,127		15,270	7,039	3,375	4,857	
11	3,060	72	2,987	(*)	(*)	3,514	103	3,411	(*)		4,078	148	3,929	(*)	1
12	-1,075	(*)			-1,075	-1,356	(*)			-1,360	-1,610				-1,610
13	8,654	214	6,381	2,040	20	9,941	337	7,301	2,247	55	11,113	373	8,065	2,597	79
14	472	90	318	47	19	548	103	347	48	50	494	95	274	55	70
15	2,212	(*)	218	1,993	1	2,462	(*)	257	2,199	6	2,850	(*)	299	2,542	9
16	5,970	123	5,847			6,932	235	6,697			7,769	278	7,491		
17	949	276	405	55	213	1,067	300	425	86	257	1,259	326	465	156	313
18	507	93	186	28	201	593	100	232	37	225	793	122	326	66	280
19	442	183	219	28	12	474	200	193	49	32	466	204	139	90	34
20	1,647	943	219	36	449	1,777	1,036	247	39	455	1,751	1,003	228	53	467
21	999	789	99	16	94	1,143	924	107	11	100	1,096	869	110	19	99
22	592	146	104	16	326	564	105	118	24	317	591	130	95	32	335
	57	8	17	4	29	71	7	21	3	39	64	5	23	3	33
	Chain-type quantity indexes, 1992=100														
23	Pollution abatement and control														
24	71.2	98.0	79.4	38.2	56.4	72.4	100.2	81.0	38.6	70.2	71.9	98.0	79.6	41.3	75.9
25	69.0	95.2	78.4	38.5	103.7	70.3	97.5	80.1	38.8	112.8	70.1	96.0	78.9	41.2	115.7
26	113.0	113.0				106.7	106.7				105.6	105.6			
27	54.0	54.0				56.9	56.9				65.5	65.5			
28															
29	66.6	90.3	72.1	40.0	87.6	68.6	95.3	73.5	40.5	97.6	67.5	93.6	70.5	43.2	101.1
30	81.5	73.2	125.8	31.9		85.3	80.1	122.2	37.8		82.9	81.8	110.9	36.7	
31	59.2	120.0	54.8	41.4	87.6	60.2	122.1	57.9	40.8	97.6	59.8	115.4	57.6	44.3	101.1
32	65.8	121.8	70.5	41.4		67.0	123.6	75.2	40.8		66.3	116.4	72.8	44.3	
33	45.8	56.8	45.5	12.2		48.0	66.5	47.6	11.0		49.2	78.5	48.6	20.3	
34	87.6				87.6	97.6				97.6	101.1				101.1
35	63.7	48.6	90.9	35.6	9.4	65.6	69.7	93.0	35.4	23.6	67.7	69.5	95.4	37.5	30.3
36	42.1	62.8	51.9	17.9	16.8	43.9	64.2	51.2	16.6	40.3	36.0	52.1	37.2	17.2	51.1
37	35.9	0	58.1	36.5	1.2	36.2	0	65.0	36.3	5.0	38.3	0	66.9	38.5	7.1
38	97.6	143.4	96.7			101.1	249.6	98.8			105.3	269.4	102.8		
39	74.4	70.3	89.9	18.2	165.3	77.4	70.5	87.2	26.0	184.6	82.1	68.8	85.9	42.5	202.4
40	88.2	78.1	85.3	23.4	167.6	95.3	77.5	98.2	28.8	173.4	114.6	84.6	124.1	46.7	193.8
41	62.4	66.8	92.9	14.5	138.9	62.0	67.4	75.9	23.6	346.6	54.9	61.7	49.3	39.0	327.2
42	216.9	260.4	255.5	44.3	194.9	214.1	261.3	263.3	44.0	181.1	187.6	224.6	216.9	54.1	165.4
43	374.0	374.9	372.8	300.3	383.6	390.3	400.5	367.8	188.3	371.0	332.4	334.1	335.3	282.8	325.5
44	128.7	101.2	220.2	22.2	164.4	112.6	66.7	230.8	32.0	146.4	105.1	73.6	165.1	37.0	137.7
	197.0	117.0	144.3	82.8	481.3	255.7	105.2	171.1	61.9	599.2	185.8	59.0	168.1	53.0	468.9
	Chain-type price indexes, 1992=100														
45	Pollution abatement and control														
46	53.0	56.1	54.8	46.6	85.8	59.8	65.0	60.7	51.6	103.9	67.4	76.5	66.4	56.4	122.2
47	53.2	56.4	55.0	46.5	65.2	61.0	65.6	60.9	51.5	74.1	67.9	77.5	66.6	56.3	84.9
48	54.3	54.3				65.5	65.5				79.8	79.8			
49	58.8	58.8				63.5	63.5				68.7	68.7			
50															
51	53.3	57.3	55.9	46.4	62.7	59.7	65.6	61.5	51.4	71.2	67.4	76.6	67.9	56.3	81.4
52	55.7	56.1	55.9	53.4		61.3	61.3	62.1	59.0		67.0	67.1	67.1	67.4	
53	51.5	58.7	55.4	45.5	62.7	58.5	70.4	60.7	50.4	71.2	67.6	87.6	67.9	54.7	81.4
54	50.4	58.5	51.9	45.5		57.8	70.2	57.0	50.4		67.1	87.3	63.2	54.7	
55	58.1	67.3	57.9	45.4		63.6	81.7	63.3	50.4		71.9	99.7	71.4	54.7	
56	62.7				62.7	71.2				71.2	81.4				81.4
57	51.0	54.7	53.3	46.6	53.1	56.9	60.2	59.6	51.6	59.1	61.6	66.7	64.3	56.4	65.3
58	52.4	57.2	53.0	49.4	53.0	58.2	63.6	59.0	54.6	59.0	64.1	72.4	64.1	60.7	65.2
59	47.9	58.9	69.7	46.5	53.5	52.8	63.6	73.4	51.5	59.5	57.8	68.8	83.1	56.2	65.8
60	52.6	55.0	52.7			59.0	60.2	59.1			63.4	66.0	63.6		
61	49.0	48.2	48.9	51.3	47.0	52.9	52.1	52.8	55.7	50.8	58.9	58.0	58.6	62.0	56.5
62	46.5	46.5	46.5	46.5	46.5	50.3	50.3	50.3	50.3	50.3	56.0	56.0	56.0	56.0	56.0
63	51.8	49.0	52.0	56.0	53.0	55.9	53.0	56.0	61.0	57.0	62.1	59.0	62.0	68.0	63.0
64	48.6	48.7	48.4	48.4	48.7	53.2	53.3	52.9	52.8	53.0	59.8	60.1	59.3	59.3	59.5
65	48.9	48.9	48.9	48.9	48.9	53.6	53.6	53.6	53.6	53.6	60.4	60.4	60.4	60.4	60.4
66	48.4	48.4	48.4	48.4	48.4	52.7	52.7	52.7	52.7	52.7	59.2	59.2	59.2	59.2	59.2
	44.5	44.5	44.5	44.5	44.5	48.2	48.2	48.2	48.2	48.2	53.0	53.0	53.0	53.0	53.0
	Addendum: Business capital consumption allowances: ⁷														
67	Valued at replacement cost in current dollars	5,595				6,510					7,424				
68	Chain-type quantity index, 1992=100	68.9				72.7					75.8				
69	Chained-type price index, 1992=100	55.9				61.6					67.4				

See footnotes at end of table.

Table 11.—Expenditures for Pollution Abatement and Control by Sector and by Type, in Current Dollars and Chain-Type Quantity and Price Indexes, 1972–94—Continued

Line	1981					1982					1983					
	Total ¹	Air	Water	Solid waste	Other and unallocated ²	Total ¹	Air	Water	Solid waste	Other and unallocated ²	Total ¹	Air	Water	Solid waste	Other and unallocated ²	
Millions of dollars																
1	54,409	25,423	20,150	9,691	-856	55,949	25,963	20,702	9,803	-518	59,118	26,681	21,708	11,119	-389	
2	Pollution abatement	51,389	24,150	19,482	9,382	-1,625	52,986	24,730	20,044	9,469	-1,256	56,227	25,510	21,082	10,848	-1,212
3	Personal consumption	8,195	8,195				8,356	8,356				9,764	9,764			
4	Durable goods ³	4,823	4,823				4,964	4,964				6,201	6,201			
5	Nondurable goods ⁴	3,372	3,372				3,392	3,392				3,563	3,563			
6	Business	32,512	15,529	12,350	6,420	-1,787	33,536	15,764	13,035	6,200	-1,463	35,018	15,121	14,053	7,245	-1,402
7	On capital account	13,061	7,883	4,163	1,015		12,978	7,991	3,954	1,033		12,222	7,112	4,171	939	
8	On current account	19,451	7,646	8,187	5,404	-1,787	20,558	7,773	9,081	5,167	-1,463	22,796	8,010	9,882	6,306	-1,402
9	Private	16,537	7,511	3,622	5,404		16,703	7,632	3,904	5,167		18,392	7,867	4,219	6,306	
10	Government enterprise ⁵	4,701	135	4,566	(*)	1	5,318	141	5,177	(*)	(*)	5,805	143	5,663	(*)	(*)
11	Costs recovered ⁶	-1,788				-1,788	-1,463				-1,463	-1,402				-1,402
12	Government	10,681	426	7,132	2,962	162	11,093	609	7,009	3,269	206	11,445	625	7,029	3,603	189
13	Federal	506	85	220	53	148	550	87	238	57	168	795	136	443	119	97
14	State and local	3,209	(*)	286	2,909	14	3,526	(*)	276	3,212	38	3,871	4	290	3,484	92
15	Government enterprise purchases of fixed capital ⁵	6,967	341	6,626			7,017	523	6,494			6,780	485	6,295		
16	Regulation and monitoring	1,310	320	434	245	311	1,322	307	416	265	335	1,296	305	380	184	427
17	Federal	818	108	296	143	272	820	93	272	190	265	806	88	241	72	405
18	State and local	492	213	138	102	39	502	214	144	75	70	490	216	140	111	22
19	Research and development	1,711	953	234	65	458	1,641	927	243	69	403	1,595	867	246	87	396
20	Private	1,037	822	104	18	93	1,009	799	102	17	91	920	728	93	16	83
21	Federal	646	131	119	44	352	604	126	131	48	300	640	133	143	66	299
22	State and local	28	(*)	11	4	13	28	2	10	4	13	35	6	10	6	14
Chain-type quantity indexes, 1992=100																
23	Pollution abatement and control	70.0	101.6	71.1	41.4	80.8	69.0	101.3	69.6	39.2	53.1	70.6	102.6	69.6	42.9	43.2
24	Pollution abatement	68.4	100.5	70.6	41.0	112.9	67.8	100.8	69.2	38.7	87.2	69.7	102.7	69.4	42.8	84.0
25	Personal consumption	119.9	119.9				122.2	122.2				142.3	142.3			
26	Durable goods ³	83.7	83.7				82.8	82.8				100.8	100.8			
27	Nondurable goods ⁴															
28	Business	66.0	94.0	66.6	42.7	103.0	64.9	92.6	66.4	38.6	83.8	65.7	87.4	68.6	43.6	79.7
29	On capital account	80.8	86.1	93.1	39.2		76.6	83.0	85.3	37.0		68.8	70.6	84.7	33.5	
30	On current account	58.6	110.7	58.2	43.2	103.0	59.0	111.4	60.4	38.7	83.8	64.0	116.3	63.4	45.4	79.7
31	Private	64.3	112.0	71.0	43.2		62.4	112.7	71.7	38.7		67.5	117.5	74.1	45.4	
32	Government enterprise ⁵	50.8	64.9	50.5	8.9		53.8	67.1	53.6	8.4		57.1	71.7	56.8	8.0	
33	Costs recovered ⁶	103.0				103.0	83.8				83.8	79.7				79.7
34	Government	59.5	72.7	78.2	37.6	56.1	59.2	98.0	74.4	38.9	68.0	58.0	93.0	70.5	41.2	60.2
35	Federal	33.4	41.0	27.5	14.8	97.2	34.6	40.1	28.6	14.8	105.2	48.1	62.0	50.4	30.0	58.6
36	State and local	38.5	0	66.4	38.7	10.3	40.2	0	71.3	40.0	26.5	42.3	1.2	68.2	41.8	61.7
37	Government enterprise purchases of fixed capital ⁵	87.2	306.0	83.9			84.4	440.9	79.1			77.0	373.3	72.6		
38	Regulation and monitoring	77.8	62.0	72.8	60.9	182.4	72.9	55.0	64.8	61.3	182.0	68.1	52.2	56.5	40.8	220.8
39	Federal	107.0	67.9	102.0	170.9		99.5	54.5	86.9	112.5	154.4	92.7	48.9	72.9	40.6	223.7
40	State and local	53.2	59.3	44.7	40.9	348.5	50.5	55.2	43.5	28.0	577.8	47.4	53.6	40.5	40.7	177.7
41	Research and development	165.0	192.4	200.6	59.2	145.9	147.0	173.4	192.8	58.4	119.5	136.9	155.3	166.7	70.7	111.8
42	Private	283.5	285.0	286.1	241.2	277.3	255.6	256.9	258.1	217.2	250.2	223.3	224.3	226.4	189.9	218.1
43	Federal	103.0	66.7	185.4	45.8	129.9	89.7	59.3	190.3	47.0	103.0	90.6	59.8	197.9	61.4	97.8
44	State and local	74.4	2.4	75.1	56.0	166.0	70.0	18.9	61.8	52.1	155.7	82.9	58.0	58.5	78.7	159.9
Chain-type price indexes, 1992=100																
45	Pollution abatement and control	74.3	84.0	72.5	64.0	130.6	77.5	86.1	76.1	68.4	120.3	80.0	87.3	79.9	70.9	111.1
46	Pollution abatement	74.8	85.1	72.7	63.9	92.4	77.8	86.9	76.3	68.3	92.4	80.3	88.0	80.1	70.8	92.7
47	Personal consumption	86.5	86.5				86.6	86.6				86.9	86.9			
48	Durable goods ³	73.0	73.0				75.9	75.9				77.9	77.9			
49	Nondurable goods ⁴															
50	Business	74.7	84.6	74.7	63.8	88.7	78.4	87.2	79.1	68.2	89.3	80.9	88.6	82.6	70.6	89.9
51	On capital account	73.3	73.7	72.7	74.5		76.9	77.5	75.4	80.3		80.6	81.1	80.1	80.6	
52	On current account	75.6	97.1	75.4	62.3	88.7	79.4	98.1	80.6	66.5	89.3	81.2	96.8	83.6	69.2	89.9
53	Private	74.9	96.9	69.5	62.3		78.0	97.8	74.3	66.5		79.4	96.7	77.6	69.2	
54	Government enterprise ⁵	80.4	110.0	79.8	62.4		85.9	110.9	85.4	66.5		88.3	105.2	88.0	69.2	
55	Costs recovered ⁶	88.7				88.7	89.3				89.3	89.9				89.9
56	Government	67.4	73.0	69.3	64.1	72.5	70.4	77.4	71.6	68.5	76.4	74.1	83.6	75.8	71.2	79.1
57	Federal	70.7	82.0	69.5	68.2	72.4	74.2	86.0	72.4	73.0	76.3	77.2	87.5	76.4	74.7	78.9
58	State and local	64.7	73.0	80.0	63.9	73.1	68.1	75.9	72.0	68.3	77.0	71.1	77.8	79.1	71.0	79.7
59	Government enterprise purchases of fixed capital ⁵	68.7	71.4	68.9			71.5	75.9	71.5			75.7	83.1	75.6		
60	Regulation and monitoring	64.7	63.3	64.6	68.0	62.3	69.7	68.2	69.6	73.1	67.2	73.0	71.4	73.0	76.1	70.7
61	Federal	61.8	61.8	61.8	61.8	61.8	66.7	66.7	66.7	66.7	66.7	70.3	70.3	70.3	70.3	70.3
62	State and local	67.7	64.0	68.0	74.0	69.0	72.7	69.0	73.1	79.0	74.0	75.5	72.0	76.1	81.0	77.0
63	Research and development	66.4	66.7	65.9	65.9	66.2	71.5	71.9	70.9	70.9	71.2	74.8	75.1	74.3	74.3	74.6
64	Private	67.0	67.0	67.0	67.0	67.0	72.2	72.2	72.2	72.2	72.2	75.4	75.4	75.4	75.4	75.4
65	Federal	66.0	66.0	66.0	66.0	66.0	70.9	70.9	70.9	70.9	70.9	74.4	74.4	74.4	74.4	74.4
66	State and local	58.0	58.0	58.0	58.0	58.0	62.3	62.3	62.3	62.3	62.3	65.8	65.8	65.8	65.8	65.8
Addendum: Business capital consumption allowances: ⁷																
67	Valued at replacement cost in current dollars	8,656					9,338					9,813				
68	Chain-type quantity index, 1992=100	80.4					82.5					85.3				
69	Chain-type price index, 1992=100	74.1					77.9					79.2				

See footnotes at end of table.

Table 11.—Expenditures for Pollution Abatement and Control by Sector and by Type, in Current Dollars and Chain-Type Quantity and Price Indexes, 1972–94—Continued

Line	1984					1985					1986					
	Total ¹	Air	Water	Solid waste	Other and unallocated ²	Total ¹	Air	Water	Solid waste	Other and unallocated ²	Total ¹	Air	Water	Solid waste	Other and unallocated ²	
Millions of dollars																
1	66,058	29,415	24,178	13,027	-561	71,361	30,678	26,165	15,181	-662	76,037	31,431	28,229	17,062	-685	
2	Pollution abatement	63,259	28,204	23,565	12,734	-1,245	68,734	29,427	25,495	14,806	-995	72,905	29,959	27,490	16,595	-1,139
3	Personal consumption	11,041	11,041				12,161	12,161				12,684	12,684			
4	Durable goods ³	7,354	7,354				8,309	8,309				9,386	9,386			
5	Nondurable goods ⁴	3,687	3,687				3,851	3,851				3,298	3,298			
6	Business	39,360	16,776	15,401	8,648	-1,465	42,038	16,963	16,205	10,103	-1,232	44,107	17,024	17,300	11,228	-1,444
7	On capital account	14,444	8,455	4,759	1,230		14,547	8,189	4,734	1,624		14,688	8,537	4,741	1,411	
8	On current account	24,916	8,322	10,641	7,418	-1,465	27,491	8,773	11,471	8,480	-1,232	29,419	8,487	12,559	9,817	-1,444
9	Private	20,157	8,176	4,563	7,418		22,015	8,631	4,905	8,479		23,456	8,349	5,291	9,817	
10	Government enterprise ⁵	6,224	146	6,078	(*)	(*)	6,710	143	6,566	(*)		7,409	138	7,269	(*)	2
11	Costs recovered ⁶	-1,465				-1,465	-1,233				-1,233	-1,446				-1,446
12	Government	12,858	387	8,165	4,086	220	14,535	304	9,291	4,703	238	16,114	252	10,190	5,367	306
13	Federal	944	115	492	197	140	1,262	108	718	276	159	1,299	72	678	318	231
14	State and local	4,320	14	337	3,889	80	4,908	12	391	4,427	79	5,564	14	426	5,049	75
15	Government enterprise purchases of fixed capital ⁵	7,594	258	7,336			8,365	183	8,182			9,251	166	9,085		
16	Regulation and monitoring	1,286	335	389	207	355	1,251	363	464	295	129	1,461	400	510	349	202
17	Federal	743	101	219	76	346	573	103	245	101	124	690	104	253	136	197
18	State and local	543	234	169	131	9	678	259	219	195	5	771	296	257	213	5
19	Research and development	1,514	876	224	85	329	1,375	888	205	79	203	1,671	1,072	229	118	252
20	Private	892	707	90	15	80	948	752	95	16	85	1,028	815	104	18	93
21	Federal	590	165	120	65	240	408	133	97	61	118	621	255	110	98	158
22	State and local	32	4	14	5	9	19	4	13	2	(*)	22	3	16	2	2
Chain-type quantity index, 1992=100																
23	66,058	111.0	74.5	48.1	61.9	80.3	113.8	77.7	54.1	79.1	85.9	120.7	83.1	58.9	91.2	
24	Pollution abatement	76.1	111.5	74.6	48.1	84.2	80.3	114.4	77.7	53.9	69.2	85.6	120.8	83.2	58.6	84.1
25	Personal consumption	158.8	158.8				170.9	170.9				185.8	185.8			
26	Durable goods ³	116.1	116.1				127.2	127.2				137.9	137.9			
27	Nondurable goods ⁴															
28	Business	71.4	95.0	72.1	49.8	81.3	74.5	94.9	74.0	56.1	69.6	78.4	98.5	78.9	60.5	85.4
29	On capital account	78.7	81.5	92.9	42.9		77.5	77.3	90.0	55.9		76.6	78.6	89.0	47.1	
30	On current account	67.6	119.3	65.4	51.0	81.3	72.8	125.5	68.8	55.9	69.6	79.2	132.8	75.6	62.9	85.4
31	Private	71.6	120.7	76.5	51.0		76.4	127.0	79.5	55.9		83.0	134.5	85.0	62.9	
32	Government enterprise ⁵	58.8	72.0	58.6	7.7		62.5	73.4	62.3	7.3		69.9	75.0	69.9	7.1	
33	Costs recovered ⁶	81.3				81.3	69.7				69.7	85.5				85.5
34	Government	62.8	55.9	79.2	44.7	68.0	67.5	43.4	84.8	49.7	61.0	73.1	35.9	91.3	55.0	90.4
35	Federal	55.4	51.4	54.2	48.2	82.1	71.1	47.6	75.1	65.7	90.2	72.0	32.1	69.6	73.6	129.5
36	State and local	45.0	4.4	72.3	44.6	52.1	48.8	3.8	71.3	49.0	49.3	53.7	4.0	76.5	54.1	46.6
37	Government enterprise purchases of fixed capital ⁵	83.6	191.8	82.0			87.2	135.4	86.5			94.6	121.9	94.2		
38	Regulation and monitoring	65.2	54.8	55.8	44.5	177.8	61.2	57.1	64.2	61.6	62.4	68.9	60.7	68.1	70.4	93.8
39	Federal	82.9	54.4	64.5	41.5	185.4	61.6	53.6	69.4	52.7	64.1	71.4	51.8	69.2	68.8	97.8
40	State and local	50.3	54.9	47.2	46.2	68.3	60.7	58.6	58.9	67.0	38.4	66.6	64.5	66.6	70.9	35.7
41	Research and development	124.9	151.2	164.1	66.4	89.7	110.8	149.8	146.3	59.9	54.1	132.9	178.8	161.1	88.1	66.0
42	Private	208.5	209.6	209.8	177.0	204.0	216.7	217.9	218.4	184.4	211.8	232.8	234.0	235.0	198.6	227.5
43	Federal	80.7	71.9	161.0	58.4	75.9	54.4	56.2	126.6	53.3	36.4	81.3	106.2	141.3	84.8	47.8
44	State and local	71.7	39.1	80.4	67.2	93.8	40.2	39.1	67.8	25.3	1.0	44.5	24.6	79.8	24.2	15.7
Chain-type price index, 1992=100																
45	66,058	88.9	83.1	74.0	111.9	84.9	88.9	86.2	76.7	103.2	84.6	87.4	86.9	79.1	92.7	
46	Pollution abatement	82.8	89.6	83.3	73.9	94.8	85.2	89.6	86.4	76.7	92.2	84.8	87.8	87.1	79.0	86.9
47	Personal consumption	88.0	88.0				90.1	88.0				86.4	86.4			
48	Durable goods ³	80.2	80.2				82.7	80.2				86.2	86.2			
49	Nondurable goods ⁴															
50	Business	83.7	90.4	86.1	73.7	92.1	85.6	90.4	88.3	76.5	90.5	85.3	88.5	88.4	78.8	86.5
51	On capital account	83.3	83.5	83.3	82.4		85.2	83.5	85.5	83.6		87.0	87.5	86.6	86.1	
52	On current account	84.0	98.0	87.2	72.5	92.1	86.1	98.0	89.3	75.5	90.5	84.6	89.8	89.0	77.8	86.5
53	Private	82.0	97.9	81.3	72.5		84.0	97.9	84.1	75.5		82.3	89.7	84.9	77.8	
54	Government enterprise ⁵	91.9	106.9	91.6	72.5		93.2	106.9	93.0	75.7		92.0	97.5	91.9	77.9	
55	Costs recovered ⁶	92.1				92.1	90.5				90.5	86.5				86.5
56	Government	76.9	86.2	78.4	74.4	81.3	80.9	86.2	83.2	77.0	84.2	82.7	87.2	84.8	79.5	85.2
57	Federal	79.6	89.1	78.9	77.2	81.2	82.9	89.1	83.2	79.5	84.1	84.3	89.2	84.7	81.7	85.0
58	State and local	74.6	80.1	86.5	74.2	82.0	78.1	80.1	101.7	76.9	84.9	80.5	86.2	103.6	79.4	85.9
59	Government enterprise purchases of fixed capital ⁵	78.2	86.1	78.0			82.6	86.1	82.5			84.1	87.1	84.1		
60	Regulation and monitoring	75.7	74.9	75.5	78.8	72.9	78.5	74.9	78.4	81.1	75.7	81.4	80.8	81.3	84.0	78.5
61	Federal	72.5	72.5	72.5	72.5	72.5	75.3	72.5	75.3	75.3	75.3	78.1	78.1	78.1	78.1	78.1
62	State and local	79.0	76.0	79.1	84.0	80.0	81.7	76.0	82.1	86.0	83.0	84.7	82.0	85.1	89.0	86.0
63	Research and development	77.6	77.9	77.0	77.0	77.3	79.5	77.9	79.1	79.1	79.3	80.5	80.7	80.3	80.4	80.5
64	Private	78.3	78.3	78.3	78.3	78.3	80.1	78.3	80.1	80.1	80.1	80.8	80.8	80.8	80.8	80.8
65	Federal	77.0	77.0	77.0	77.0	77.0	79.0	77.0	79.0	79.0	79.0	80.4	80.4	80.4	80.4	80.4
66	State and local	69.2	69.2	69.2	69.2	69.2	72.9	69.2	72.9	72.9	72.9	76.1	76.1	76.1	76.1	76.1
Addendum: Business capital consumption allowances: ⁷																
67	Valued at replacement cost in current dollars	10,901					11,568					11,918				
68	Chain-type quantity index, 1992=100	90.4					93.9					94.8				
69	Chain-type price index, 1992=100	83.0					84.8					86.5				

See footnotes at end of table.

Table 11.—Expenditures for Pollution Abatement and Control by Sector and by Type, in Current Dollars and Chain-Type Quantity and Price Indexes, 1972–94—Continued

Line	1987					1988					1989					
	Total ¹	Air	Water	Solid waste	Other and unallocated ²	Total ¹	Air	Water	Solid waste	Other and unallocated ²	Total ¹	Air	Water	Solid waste	Other and unallocated ²	
Millions of dollars																
1	78,948	29,362	30,761	19,432	-607	83,754	31,328	31,287	22,434	-1,295	88,506	29,339	33,676	26,658	-1,167	
2	Pollution abatement	75,611	27,871	29,973	18,912	-1,145	80,548	29,882	30,485	21,924	-1,743	85,096	27,740	32,818	26,141	-1,603
3	Personal consumption	11,339	11,339	12,484	12,484	11,091	11,091	
4	Durable goods ³	8,800	8,800	10,249	10,249	9,872	9,872	
5	Nondurable goods ⁴	2,539	2,539	2,235	2,235	1,219	1,219	
6	Business	45,735	16,264	18,160	12,781	-1,471	48,396	17,044	18,617	14,599	-1,864	52,231	16,126	20,496	17,383	-1,773
7	On capital account	14,562	8,445	4,610	1,507	15,025	9,031	4,170	1,824	15,457	8,717	4,703	2,037
8	On current account	31,173	7,819	13,550	11,275	-1,471	33,371	8,013	14,447	12,776	-1,864	36,775	7,409	15,793	15,346	-1,773
9	Private	24,646	7,683	5,688	11,275	26,697	7,852	6,069	12,776	29,056	7,257	6,454	15,346
10	Government enterprise ⁵	8,000	135	7,862	(*)	2	8,541	161	8,378	(*)	2	9,494	152	9,339	(*)	2
11	Costs recovered ⁶	-1,473	-1,473	-1,867	-1,867	-1,775	-1,775
12	Government	18,537	269	11,813	6,130	326	19,668	355	11,868	7,325	121	21,774	524	12,322	8,759	169
13	Federal	1,440	100	720	339	281	1,547	202	749	483	113	1,627	209	786	505	127
14	State and local	6,294	6	452	5,791	45	7,366	32	484	6,842	8	8,871	85	489	8,253	43
15	Government enterprise purchases of fixed capital ⁵	10,803	162	10,641	10,756	121	10,635	11,276	229	11,047
16	Regulation and monitoring	1,645	460	560	394	232	1,663	468	580	396	219	1,728	515	625	397	190
17	Federal	821	117	303	173	228	855	128	327	186	215	862	133	354	191	184
18	State and local	825	343	257	222	4	808	340	253	210	5	866	382	272	206	6
19	Research and development	1,692	1,032	229	126	306	1,542	977	223	114	229	1,682	1,083	233	120	246
20	Private	1,053	834	106	18	95	1,113	879	112	22	100	1,242	980	125	25	112
21	Federal	614	196	106	106	206	407	94	95	89	128	420	98	94	93	134
22	State and local	26	2	17	2	5	22	5	15	2	(*)	21	5	14	2	(*)
Chain-type quantity index, 1992=100																
23	Pollution abatement and control	87.1	110.2	89.0	65.0	77.4	89.7	114.8	87.9	72.1	155.5	91.3	103.9	91.5	81.5	132.9
24	Pollution abatement	86.8	109.9	89.1	64.7	81.5	89.8	115.2	88.0	72.0	118.0	91.3	103.3	91.7	81.6	103.1
25	Personal consumption	160.5	160.5	173.4	173.4	149.4	149.4	
26	Durable goods ³	125.1	125.1	142.6	142.6	134.6	134.6	
27	Nondurable goods ⁴	
28	Business	79.7	92.8	81.6	66.5	84.2	82.1	94.8	81.7	73.0	101.8	85.0	86.5	86.6	82.6	92.0
29	On capital account	74.3	75.8	85.0	50.0	74.5	78.7	74.7	58.9	74.5	73.9	82.2	63.2
30	On current account	82.4	122.0	80.4	69.5	84.2	85.8	122.5	84.0	75.4	101.8	90.2	108.1	88.0	86.0	92.0
31	Private	85.3	123.3	89.6	69.5	89.3	123.4	92.5	75.4	92.7	108.8	94.8	86.0
32	Government enterprise ⁵	74.7	75.6	74.7	6.9	78.9	89.4	78.7	6.6	83.7	81.0	83.8	6.2
33	Costs recovered ⁶	84.3	84.3	101.8	101.8	92.1	92.1
34	Government	82.2	37.8	103.5	61.2	94.8	83.8	48.1	100.0	70.2	34.0	89.7	68.5	101.4	79.8	45.9
35	Federal	78.3	44.5	72.5	76.6	155.0	81.2	87.1	72.7	105.3	60.1	82.3	86.8	74.0	105.1	65.1
36	State and local	59.0	1.7	76.2	60.5	27.7	66.0	8.7	72.7	68.6	5.0	76.4	23.2	83.4	78.7	24.4
37	Government enterprise purchases of fixed capital ⁵	108.2	117.3	108.1	104.0	83.2	104.3	105.8	151.9	105.1
38	Regulation and monitoring	75.1	67.4	72.2	76.9	104.4	73.9	66.3	72.9	75.7	96.1	74.2	70.9	75.7	73.9	79.2
39	Federal	82.3	56.8	80.2	84.4	109.6	83.4	60.1	84.1	88.3	100.6	80.0	59.5	86.6	86.5	82.2
40	State and local	68.8	71.9	64.2	71.4	28.3	65.7	69.0	61.9	66.9	31.0	69.1	75.8	65.1	65.0	36.9
41	Research and development	131.6	168.3	156.9	92.1	78.3	114.5	152.0	145.8	79.5	56.0	119.8	161.7	146.3	80.2	57.8
42	Private	233.4	234.5	236.0	198.9	228.0	235.0	235.3	237.7	234.9	229.8	251.6	251.9	254.3	251.9	245.9
43	Federal	78.5	79.9	132.0	89.3	61.0	49.8	36.8	113.7	72.1	36.4	49.3	36.8	108.0	72.2	36.5
44	State and local	50.1	13.1	83.9	25.4	46.1	41.5	38.4	72.1	24.3	.9	36.2	40.3	61.2	16.0	.8
Chain-type price index, 1992=100																
45	Pollution abatement and control	86.6	89.5	88.5	81.7	96.8	89.2	91.6	91.1	85.0	102.7	92.7	94.8	94.2	89.4	108.3
46	Pollution abatement	86.8	89.9	88.7	81.6	90.1	89.3	91.9	91.3	85.0	94.8	92.8	95.1	94.3	89.4	99.7
47	Personal consumption	89.5	89.5	91.2	91.2	94.0	94.0	
48	Durable goods ³	89.1	89.1	91.0	91.0	92.9	92.9	
49	Nondurable goods ⁴	
50	Business	87.0	89.8	89.7	81.6	89.3	89.5	92.0	91.8	85.0	93.7	93.2	95.5	95.4	89.4	98.5
51	On capital account	88.9	89.8	88.2	86.7	91.5	92.4	90.8	89.1	94.1	95.1	93.1	92.7
52	On current account	86.2	90.1	90.3	80.9	89.3	88.6	92.0	92.2	84.4	93.7	92.9	96.4	96.2	88.9	98.5
53	Private	84.2	90.0	86.5	80.9	87.1	91.9	89.5	84.4	91.3	96.3	92.8	88.9
54	Government enterprise ⁵	93.0	94.7	93.0	80.9	94.0	95.3	94.0	84.4	98.5	99.3	98.5	88.9
55	Costs recovered ⁶	89.3	89.3	93.7	93.7	98.5	98.5
56	Government	84.7	88.3	86.7	81.6	86.5	88.1	91.8	90.2	85.0	89.5	91.1	95.1	92.3	89.4	92.9
57	Federal	85.9	89.8	86.3	83.6	86.5	89.0	92.4	89.6	86.7	89.5	92.4	95.9	92.3	90.9	92.9
58	State and local	82.8	89.1	110.1	81.5	86.5	86.7	91.0	123.7	84.9	89.5	90.2	92.9	109.0	89.3	92.9
59	Government enterprise purchases of fixed capital ⁵	85.8	88.5	85.8	89.0	93.0	88.9	91.7	96.7	91.6
60	Regulation and monitoring	84.2	83.6	84.0	86.7	81.1	86.4	86.4	86.2	88.4	83.4	89.5	89.0	89.5	91.0	87.5
61	Federal	80.6	80.6	80.6	80.6	80.6	82.9	82.9	82.9	82.9	82.9	87.1	87.1	87.1	87.1	87.1
62	State and local	87.7	85.0	88.1	92.0	89.0	89.9	88.0	90.1	93.0	91.0	91.7	90.0	92.1	94.0	93.0
63	Research and development	82.3	82.4	82.2	82.3	82.3	86.3	86.5	86.1	86.0	86.1	90.0	90.1	89.8	89.7	89.8
64	Private	82.6	82.6	82.6	82.6	82.6	86.7	86.7	86.7	86.7	86.7	90.0	90.3	90.3	90.3	90.3
65	Federal	82.3	82.3	82.3	82.3	82.3	85.9	85.9	85.9	85.9	85.9	89.6	89.6	89.6	89.6	89.6
66	State and local	79.3	79.3	79.3	79.3	79.3	83.1	83.1	83.1	83.1	83.1	87.8	87.8	87.8	87.8	87.8
Addendum: Business capital consumption allowances: ⁷																
67	Valued at replacement cost in current dollars	12,151	12,870	13,069
68	Chain-type quantity index, 1992=100	94.5	97.2	96.4
69	Chain-type price index, 1992=100	88.5	91.1	93.3

See footnotes at end of table.

Table 11.—Expenditures for Pollution Abatement and Control by Sector and by Type, in Current Dollars and Chain-Type Quantity and Price Indexes, 1972–94—Continued

Line	1990					1991					1992					
	Total ¹	Air	Water	Solid waste	Other and unallocated ²	Total ¹	Air	Water	Solid waste	Other and unallocated ²	Total ¹	Air	Water	Solid waste	Other and unallocated ²	
Millions of dollars																
1	94,820	28,330	37,126	30,642	-1,279	97,904	27,785	37,921	32,825	-627	104,826	29,789	39,065	36,582	-811	
2	Pollution abatement	91,611	26,881	36,320	30,097	-1,687	93,748	25,871	36,935	32,168	-1,227	100,461	28,229	37,966	35,824	-1,559
3	Personal consumption	9,331	9,331				7,425	7,425				7,897	7,897			
4	Durable goods ³	8,946	8,946				7,425	7,425				7,897	7,897			
5	Nondurable goods ⁴	386	386				0	0				0	0			
6	Business	58,297	17,064	23,290	19,865	-1,922	61,094	17,823	24,043	20,797	-1,569	65,925	19,529	24,808	23,544	-1,956
7	On capital account	17,931	9,682	5,801	2,448		19,966	11,279	6,043	2,644		22,042	12,417	6,149	3,477	
8	On current account	40,366	7,382	17,489	17,417	-1,922	41,129	6,545	18,000	18,153	-1,569	43,883	7,113	18,659	20,067	-1,956
9	Private	31,861	7,228	7,216	17,417		31,531	6,390	6,988	18,153		34,325	6,924	7,336	20,065	
10	Government enterprise ⁵	10,430	154	10,273	(*)	2	11,169	155	11,012	1	2	11,514	189	11,323	2	(*)
11	Costs recovered ⁶	-1,924				-1,924	-1,571				-1,571	-1,956				-1,956
12	Government	23,983	486	13,030	10,232	235	25,229	623	12,892	11,371	342	26,639	803	13,158	12,280	397
13	Federal	1,782	240	843	562	138	1,908	253	978	515	162	2,141	251	1,151	529	210
14	State and local	10,329	47	514	9,671	97	11,760	187	537	10,856	181	12,873	396	538	11,751	188
15	Government enterprise purchases of fixed capital ⁵	11,872	200	11,672			11,560	183	11,378			11,625	156	11,469		
16	Regulation and monitoring	1,789	578	620	428	163	2,288	742	761	515	271	2,604	817	922	591	274
17	Federal	828	163	320	192	153	1,104	264	380	213	246	1,237	256	469	254	258
18	State and local	962	415	300	236	11	1,185	477	381	302	25	1,367	560	453	338	16
19	Research and development	1,419	871	186	117	245	1,868	1,173	225	141	329	1,561	743	177	167	474
20	Private	957	755	97	19	86	1,235	975	124	25	111	546	431	55	11	50
21	Federal	444	110	78	98	159	601	189	86	112	214	950	298	97	144	410
22	State and local	19	7	11	(*)	(*)	32	9	15	5	4	65	14	26	11	13
Chain-type quantity index, 1992=100																
23	Pollution abatement and control	94.5	97.8	98.3	88.9	142.0	95.3	94.5	98.2	92.2	74.3	100.0	100.0	100.0	100.0	
24	Pollution abatement	94.9	97.6	98.8	89.1	105.5	94.9	92.8	98.4	92.3	78.5	100.0	100.0	100.0	100.0	
25	Personal consumption	122.8	122.8				96.4	96.4				100.0	100.0			
26	Durable goods ³	120.3	120.3				96.4	96.4				100.0	100.0			
27	Nondurable goods ⁴															
28	Business	91.5	89.1	95.8	89.5	97.0	94.0	91.9	97.6	90.8	80.3	100.0	100.0	100.0	100.0	
29	On capital account	84.7	80.8	99.0	73.5		91.8	91.7	100.0	77.7		100.0	100.0	100.0	100.0	
30	On current account	94.9	103.4	94.7	92.3	97.0	95.1	92.2	96.8	93.1	80.3	100.0	100.0	100.0	100.0	
31	Private	97.0	104.0	102.8	92.3		93.8	92.6	97.0	93.1		100.0	100.0	100.0	100.0	
32	Government enterprise ⁵	89.5	79.9	89.7	5.9		96.5	79.9	96.8	28.6		100.0	100.0	100.0	100.0	
33	Costs recovered ⁶	97.1				97.1	80.4				80.4	100.0			100.0	
34	Government	95.2	62.4	104.6	88.4	61.8	96.8	78.3	99.7	95.2	87.4	100.0	100.0	100.0	100.0	
35	Federal	87.4	97.0	77.5	111.8	68.8	90.7	100.5	86.7	99.8	78.2	100.0	100.0	100.0	100.0	
36	State and local	84.6	12.5	88.5	87.4	53.9	93.5	48.4	94.5	94.9	97.6	100.0	100.0	100.0	100.0	
37	Government enterprise purchases of fixed capital ⁵	108.5	130.4	108.2			101.5	117.3	101.3			100.0	100.0	100.0		
38	Regulation and monitoring	74.0	76.3	72.5	76.8	65.6	90.4	93.3	84.9	89.1	102.7	100.0	100.0	100.0	100.0	
39	Federal	74.0	70.3	73.3	83.7	65.5	92.9	107.3	84.3	87.4	99.5	100.0	100.0	100.0	100.0	
40	State and local	73.9	78.8	69.7	71.9	67.1	88.1	86.9	85.6	90.4	153.1	100.0	100.0	100.0	100.0	
41	Research and development	97.8	125.8	112.9	75.9	55.6	123.9	163.1	131.3	88.1	72.1	100.0	100.0	100.0	100.0	
42	Private	187.6	187.7	190.1	187.8	183.4	233.2	233.5	235.3	233.8	228.1	100.0	100.0	100.0	100.0	
43	Federal	50.4	39.6	87.0	73.1	41.7	65.7	65.7	92.1	80.7	54.3	100.0	100.0	100.0	100.0	
44	State and local	31.0	51.6	47.0	4.7	.8	51.1	66.0	58.7	41.7	28.5	100.0	100.0	100.0	100.0	
Chain-type price index, 1992=100																
45	Pollution abatement and control	95.9	97.3	96.7	94.2	111.1	98.2	98.7	98.9	97.3	104.0	100.0	100.0	100.0	100.0	
46	Pollution abatement	96.1	97.5	96.8	94.2	102.5	98.3	98.8	98.9	97.3	100.2	100.0	100.0	100.0	100.0	
47	Personal consumption	96.2	96.2				97.5	97.5				100.0	100.0			
48	Durable goods ³	94.2	94.2				97.5	97.5				100.0	100.0			
49	Nondurable goods ⁴															
50	Business	96.6	98.1	98.0	94.3	101.3	98.6	99.3	99.3	97.3	99.9	100.0	100.0	100.0	100.0	
51	On capital account	96.0	96.5	95.3	95.7		98.7	99.1	98.2	97.9		100.0	100.0	100.0	100.0	
52	On current account	96.9	100.4	99.0	94.0	101.3	98.5	99.7	99.6	97.2	99.9	100.0	100.0	100.0	100.0	
53	Private	95.7	100.3	95.7	94.0		97.9	99.7	98.2	97.2		100.0	100.0	100.0	100.0	
54	Government enterprise ⁵	101.2	102.1	101.2	94.1		100.5	102.6	100.5	97.2		100.0	100.0	100.0	100.0	
55	Costs recovered ⁶	101.3				101.3	99.9				99.9	100.0			100.0	
56	Government	94.5	97.0	94.7	94.2	95.7	97.9	99.1	98.3	97.3	98.6	100.0	100.0	100.0	100.0	
57	Federal	95.3	98.4	94.5	94.9	95.7	98.3	100.4	98.0	97.6	98.6	100.0	100.0	100.0	100.0	
58	State and local	94.8	94.2	108.0	94.2	95.7	97.7	97.6	105.5	97.3	98.6	100.0	100.0	100.0	100.0	
59	Government enterprise purchases of fixed capital ⁵	94.2	98.1	94.1			98.0	99.7	97.9			100.0	100.0	100.0		
60	Regulation and monitoring	92.9	92.8	92.7	94.2	90.9	97.3	97.4	97.1	97.8	96.3	100.0	100.0	100.0	100.0	
61	Federal	90.5	90.5	90.5	90.5	90.5	96.1	96.1	96.1	96.1	96.1	100.0	100.0	100.0	100.0	
62	State and local	95.1	94.0	95.1	97.0	96.0	98.3	98.0	98.2	99.0	99.0	100.0	100.0	100.0	100.0	
63	Research and development	93.0	93.1	93.0	92.8	92.8	96.6	96.7	96.6	96.3	96.4	100.0	100.0	100.0	100.0	
64	Private	93.3	93.3	93.3	93.3	93.3	96.9	96.9	96.9	96.9	96.9	100.0	100.0	100.0	100.0	
65	Federal	92.7	92.7	92.7	92.7	92.7	96.2	96.2	96.2	96.2	96.2	100.0	100.0	100.0	100.0	
66	State and local	92.8	92.8	92.8	92.8	92.8	96.8	96.8	96.8	96.8	96.8	100.0	100.0	100.0	100.0	
Addendum: Business capital consumption allowances: ⁷																
67	Valued at replacement cost in current dollars	13,439					14,047					14,532				
68	Chain-type quantity index, 1992=100	96.6					98.0					100.0				
69	Chain-type price index, 1992=100	95.7					98.6					100.0				

See footnotes at end of table.

Table 11.—Expenditures for Pollution Abatement and Control by Sector and by Type, in Current Dollars and Chain-Type Quantity and Price Indexes, 1972-94—Continued

Line	1993					1994 ^p					
	Total ¹	Air	Water	Solid waste	Other and unallocated ²	Total ¹	Air	Water	Solid waste	Other and unallocated ²	
Millions of dollars											
1	110,052	32,475	39,383	38,374	-181	121,811	37,597	42,384	41,736	94	
2	Pollution abatement	105,840	30,994	38,445	37,634	-1,233	117,622	36,167	41,550	41,080	-1,176
3	Personal consumption	8,436	8,436				9,756	9,756			
4	Durable goods ³	8,436	8,436				9,756	9,756			
5	Nondurable goods ⁴	0	0				0	0			
6	Business	69,010	21,459	25,014	24,150	-1,612	76,631	25,004	27,210	26,150	-1,733
7	On capital account	24,103	14,401	6,029	3,673		27,743	17,137	6,820	3,785	
8	On current account	44,908	7,059	18,985	20,476	-1,612	48,888	7,867	20,390	22,365	-1,733
9	Private	34,770	6,922	7,375	20,474		38,008	7,663	7,983	22,362	
10	Government enterprise ⁵	11,750	137	11,610	3	(*)	12,614	204	12,408	3	(*)
11	Costs recovered ⁶	-1612				-1,612	-1,733				-1,733
12	Government	28,394	1,098	13,432	13,485	379	31,234	1,407	14,340	14,930	557
13	Federal	2,197	326	1,050	631	189	2,232	346	1,034	484	368
14	State and local	14,214	597	575	12,853	190	15,906	799	472	14,446	189
15	Government enterprise purchases of fixed capital ⁵	11,983	175	11,808			13,097	262	12,834		
16	Regulation and monitoring	2,343	753	750	521	319	2,201	714	622	429	436
17	Federal	1,249	246	461	232	311	1,271	234	440	194	402
18	State and local	1,094	508	289	290	8	930	480	182	234	34
19	Research and development	1,869	728	188	219	734	1,989	716	212	228	834
20	Private	736	461	81	88	106	685	420	76	82	107
21	Federal	1,068	251	77	120	620	1,220	280	91	128	722
22	State and local	65	16	30	11	8	84	16	45	18	5
Chain-type quantity indexes, 1992=100											
23	Pollution abatement and control	102.5	107.3	97.1	102.6	23.0	110.0	120.6	100.4	109.1	12.7
24	Pollution abatement	102.6	108.1	97.5	102.8	78.1	110.5	122.4	101.1	109.6	73.6
25	Personal consumption	104.2	104.2				116.6	116.6			
26	Durable goods ³	104.2	104.2				116.6	116.6			
27	Nondurable goods ⁴										
28	Business	101.9	108.7	96.6	100.3	81.2	109.5	122.9	100.4	106.1	86.0
29	On capital account	107.0	114.1	95.4	102.1		119.1	131.3	104.4	101.8	
30	On current account	99.4	99.1	96.9	100.0	81.2	104.6	108.2	99.2	106.9	86.0
31	Private	99.2	99.7	96.4	100.0		105.7	108.2	100.2	106.9	
32	Government enterprise ⁵	97.0	74.7	97.3	152.4		98.6	106.2	98.5	154.5	
33	Costs recovered ⁶	81.2				81.2	86.0				86.0
34	Government	104.0	134.5	99.2	107.4	93.4	111.2	166.7	102.5	116.2	133.8
35	Federal	100.2	129.2	88.6	116.4	88.4	99.1	134.7	84.5	87.1	167.5
36	State and local	107.6	147.0	93.9	107.0	98.9	117.3	190.3	70.3	117.5	96.2
37	Government enterprise purchases of fixed capital ⁵	100.7	111.2	100.6			106.7	156.9	106.0		
38	Regulation and monitoring	88.3	90.5	79.7	86.9	114.1	83.3	85.1	66.7	71.7	158.8
39	Federal	99.1	94.0	96.4	89.5	118.4	102.7	91.2	93.8	76.5	156.1
40	State and local	78.6	88.8	62.5	84.9	45.3	65.8	82.3	39.0	68.0	198.2
41	Research and development	116.3	95.1	103.0	127.7	150.5	123.5	92.3	114.8	132.3	172.6
42	Private	130.7	103.8	144.3	782.9	204.6	118.1	91.9	131.5	708.5	200.7
43	Federal	109.3	81.7	77.5	81.1	146.9	126.9	92.6	92.5	87.6	173.9
44	State and local	96.5	110.4	111.2	90.1	58.6	121.1	107.0	164.2	146.7	31.6
Chain-type price indexes, 1992=100											
45	Pollution abatement and control	102.6	101.6	103.8	102.2	97.0	105.8	104.6	108.1	104.6	-91.2
46	Pollution abatement	102.6	101.5	103.9	102.2	101.3	106.0	104.7	108.2	104.7	102.5
47	Personal consumption	102.5	102.5				106.0	106.0			
48	Durable goods ³	102.5	102.5				106.0	106.0			
49	Nondurable goods ⁴										
50	Business	102.7	101.1	104.4	102.2	101.5	106.2	104.1	109.2	104.7	103.1
51	On capital account	102.2	101.7	102.7	103.5		105.7	105.1	106.3	106.9	
52	On current account	103.0	100.1	105.0	102.0	101.5	106.5	102.3	110.2	104.3	103.1
53	Private	102.1	100.2	104.3	102.0		104.8	102.3	108.6	104.3	
54	Government enterprise ⁵	105.2	97.0	105.4	102.1		111.1	101.4	111.2	104.3	
55	Costs recovered ⁶	101.5				101.5	103.1				103.1
56	Government	102.5	101.7	102.9	102.2	102.2	105.5	105.1	106.3	104.6	104.8
57	Federal	102.4	100.6	102.9	102.5	102.2	105.2	102.2	106.3	105.0	104.8
58	State and local	102.7	102.5	113.7	102.2	102.2	105.4	106.0	124.7	104.6	104.8
59	Government enterprise purchases of fixed capital ⁵	102.3	101.0	102.4			105.6	107.0	105.6		
60	Regulation and monitoring	101.9	102.0	102.0	101.4	102.0	101.5	102.7	101.1	101.1	100.3
61	Federal	102.0	102.0	102.0	102.0	102.0	100.1	100.1	100.1	100.1	100.1
62	State and local	101.8	102.0	102.0	101.0	103.0	103.2	104.0	103.0	102.0	104.0
63	Research and development	102.9	103.0	103.0	102.9	102.8	103.2	104.3	104.1	103.4	101.9
64	Private	103.1	103.1	103.1	103.1	103.1	106.2	106.2	106.2	106.2	106.2
65	Federal	102.8	102.8	102.8	102.8	102.8	101.2	101.2	101.2	101.2	101.2
66	State and local	103.2	103.2	103.2	103.2	103.2	106.4	106.4	106.4	106.4	106.4
Addendum: Business capital consumption allowances: ⁷											
67	Valued at replacement cost in current dollars	15,432					16,954				
68	Chain-type quantity index, 1992=100	103.8					110.2				
69	Chain-type price index, 1992=100	102.3					105.9				

^p Preliminary.
¹ Less than \$500,000.
¹ Includes spending for air and water pollution abatement and control and expenditures for solid waste collection and disposal by means acceptable to Federal, State, and local governments. Excludes agricultural production except feedlot operations.
² "Other" includes business nonmanufacturing and government spending for abatement and control of noise, radiation and pesticide pollution; "unallocated" includes business spending not assigned to media.
³ Durable goods consist of purchases of motor vehicle emission abatement devices.
⁴ Nondurable goods consist of spending to operate motor vehicle emission abatement devices.
⁵ For consistency with past presentations, spending to operate public sewer systems is classified as business spending, and government enterprise purchases of fixed capital (primarily for construction of public sewer systems)

is classified as government spending.
⁶ "Costs recovered" is the value of reclaimed materials and energy from pollution abatement.
⁷ Business capital consumption allowances facilitate the conversion of expenditures to a cost basis. Capital consumption allowances are not available for the government sector.
 NOTE.—Expenditures are attributed to the sector that performs, rather than pays for, the air or water pollution abatement or the solid waste collection and disposal.

Table 12.—Business and Government Expenditures for Air and Water Pollution Abatement in Current Dollars and Chain-Type Quantity and Price Indexes, 1972–94—Continued

	Air pollution abatement											
	1983	1984	1985	1986	1987	1988	1989	1990	1991	1992	1993	1994 ^a
	Millions of dollars											
Business (line 6)	15,121	16,776	16,963	17,024	16,264	17,044	16,126	17,063	17,823	19,529	21,459	25,004
On capital account (line 7)	7,112	8,455	8,189	8,537	8,445	9,031	8,717	9,682	11,279	12,417	14,401	17,137
Motor vehicle emission abatement	3,325	4,547	4,901	4,983	4,927	5,911	5,450	5,580	5,793	5,892	6,625	8,649
Plant and equipment ¹	3,787	3,908	3,288	3,554	3,518	3,120	3,266	4,102	5,486	6,525	7,776	8,489
Residential systems ²												
Agricultural business ³												
On current account (line 8)	8,010	8,322	8,773	8,487	7,819	8,013	7,409	7,382	6,545	7,113	7,058	7,867
Private (line 9)	7,867	8,176	8,631	8,349	7,683	7,852	7,257	7,228	6,390	6,924	6,922	7,663
Motor vehicle emission abatement	2,608	2,699	2,764	2,310	1,812	1,611	951	408	0	0	0	0
Plant and equipment ¹	5,259	5,478	5,867	6,039	5,872	6,240	6,306	6,820	6,390	6,924	6,922	7,663
Residential systems ²												
Agricultural business ³												
Government enterprise (line 10)	143	146	143	138	135	161	152	154	155	189	137	204
Publicly owned electric utilities	143	146	143	138	135	161	152	154	155	189	137	204
Public sewer systems ⁴												
Other												
Government (line 12)	625	387	304	252	269	355	524	486	623	803	1,098	1,407
Federal (line 13)	136	115	108	72	100	202	209	240	253	251	326	346
Federal except highways	136	115	108	72	100	202	209	240	253	251	326	346
Highway erosion abatement												
State and local (line 14)	4	14	12	14	6	32	85	47	187	396	597	799
State and local except highways	4	14	12	14	6	32	85	47	187	396	597	799
Highway erosion abatement												
Government enterprise fixed capital (line 15)	485	258	183	166	162	121	229	200	183	156	175	262
Publicly owned electric utilities	485	258	183	166	162	121	229	200	183	156	175	262
Public sewer systems ⁴												
	Chain-type quantity indexes, 1992=100											
Business (line 28)	87.4	95.0	94.9	98.5	92.8	94.8	86.5	89.1	91.9	100.0	108.7	122.9
On capital account (line 29)	70.6	81.5	77.3	78.6	75.8	78.7	73.9	80.8	91.7	100.0	104.1	131.3
Motor vehicle emission abatement	72.4	96.2	100.6	98.1	93.9	110.4	99.6	100.5	100.8	100.0	117.7	138.5
Plant and equipment ¹	68.4	68.6	57.2	61.7	60.2	51.1	51.4	63.6	83.5	100.0	118.1	124.7
Residential systems ²												
Agricultural business ³												
On current account (line 30)	116.3	119.3	125.5	132.8	122.0	122.5	108.1	103.4	92.2	100.0	99.1	108.2
Private (line 31)	117.5	120.7	127.0	134.5	123.3	123.4	108.8	104.0	92.6	100.0	99.7	108.2
Motor vehicle emission abatement												
Plant and equipment ¹	85.1	86.3	92.4	97.4	95.6	99.1	96.4	101.1	92.6	100.0	99.7	108.2
Residential systems ²												
Agricultural business ³												
Government enterprise (line 32)	71.7	72.0	73.4	75.0	75.6	89.4	81.0	79.9	79.9	100.0	74.7	106.2
Publicly owned electric utilities	71.7	72.0	73.4	75.0	75.6	89.4	81.0	79.9	79.9	100.0	74.7	106.2
Public sewer systems ⁴												
Other												
Government (line 34)	93.0	55.9	43.4	35.9	37.8	48.1	68.5	62.4	78.3	100.0	134.5	166.7
Federal (line 35)	62.0	51.4	47.6	32.1	44.5	87.1	86.8	97.0	100.5	100.0	129.2	134.7
Federal except highways	62.0	51.4	47.6	32.1	44.5	87.1	86.8	97.0	100.5	100.0	129.2	134.7
Highway erosion abatement												
State and local (line 36)	1.2	4.4	3.8	4.0	1.7	8.7	23.2	12.5	48.4	100.0	147.0	190.3
State and local except highways	1.2	4.4	3.8	4.0	1.7	8.7	23.2	12.5	48.4	100.0	147.0	190.3
Highway erosion abatement												
Government enterprise fixed capital (line 37)	373.3	191.8	135.4	121.9	117.3	83.2	151.9	130.4	117.3	100.0	111.2	156.9
Publicly owned electric utilities	373.3	191.8	135.4	121.9	117.3	83.2	151.9	130.4	117.3	100.0	111.2	156.9
Public sewer systems ⁴												
	Chain-type price indexes, 1992=100											
Business (line 50)	88.6	90.4	91.5	88.5	89.8	92.0	95.5	98.1	99.3	100.0	101.1	104.1
On capital account (line 51)	81.1	83.5	85.4	87.5	89.8	92.4	95.1	96.5	99.1	100.0	101.7	105.1
Motor vehicle emission abatement	77.9	80.2	82.7	86.2	89.1	90.9	92.9	94.2	97.5	100.0	102.5	106.0
Plant and equipment ¹	84.8	87.3	88.2	88.3	89.6	93.5	97.3	98.9	100.6	100.0	100.9	104.4
Residential systems ²												
Agricultural business ³												
On current account (line 52)	96.8	98.0	98.3	89.8	90.1	92.0	96.4	100.4	99.7	100.0	100.1	102.3
Private (line 53)	96.7	97.9	98.2	89.7	90.0	91.9	96.3	100.3	99.7	100.0	100.2	102.3
Motor vehicle emission abatement												
Plant and equipment ¹	89.3	91.6	91.7	89.5	88.7	90.9	94.5	97.5	99.7	100.0	100.2	102.3
Residential systems ²												
Agricultural business ³												
Government enterprise (line 54)	105.2	106.9	102.9	97.5	94.7	95.3	99.3	102.1	102.6	100.0	97.0	101.4
Publicly owned electric utilities	105.2	106.9	102.9	97.5	94.7	95.3	99.3	102.1	102.6	100.0	97.0	101.4
Public sewer systems ⁴												
Other												
Government (line 56)	83.6	86.2	87.1	87.2	88.3	91.8	95.1	97.0	99.1	100.0	101.7	105.1
Federal (line 57)	87.5	89.1	90.5	89.2	89.8	92.4	95.9	98.4	100.4	100.0	100.6	102.2
Federal except highways	87.5	89.1	90.5	89.2	89.8	92.4	95.9	98.4	100.4	100.0	100.6	102.2
Highway erosion abatement												
State and local (line 58)	77.8	80.1	82.7	86.2	89.1	91.0	92.9	94.2	97.6	100.0	102.5	106.0
State and local except highways	77.8	80.1	82.7	86.2	89.1	91.0	92.9	94.2	97.6	100.0	102.5	106.0
Highway erosion abatement												
Government enterprise fixed capital (line 59)	83.1	86.1	86.6	87.1	88.5	93.0	96.7	98.1	99.7	100.0	101.0	107.0
Publicly owned electric utilities	83.1	86.1	86.6	87.1	88.5	93.0	96.7	98.1	99.7	100.0	101.0	107.0
Public sewer systems ⁴												

See footnotes at end of table.

Table 12.—Business and Government Expenditures for Air and Water Pollution Abatement in Current Dollars and Chain-Type Quantity and Price Indexes, 1972–94—Continued

	Water pollution abatement											
	1972	1973	1974	1975	1976	1977	1978	1979	1980	1981	1982	
	Millions of dollars											
Business (line 6)	4,779	5,372	6,008	6,557	7,901	9,167	9,996	11,219	11,880	12,350	13,035	
On capital account (line 7)	2,660	2,860	3,005	3,045	3,703	4,210	4,326	4,664	4,577	4,163	3,954	
Motor vehicle emission abatement												
Plant and equipment ¹	1,501	1,570	1,765	2,145	2,607	2,827	2,683	2,873	2,795	2,848	2,937	
Residential systems ²	1,156	1,288	1,234	892	1,089	1,374	1,638	1,787	1,779	1,312	1,015	
Agricultural business ³	3	3	7	7	8	8	5	4	3	3	3	
On current account (line 8)	2,119	2,511	3,003	3,512	4,198	4,958	5,670	6,555	7,303	8,187	9,082	
Private (line 9)	999	1,199	1,400	1,666	2,002	2,364	2,683	3,144	3,375	3,622	3,904	
Motor vehicle emission abatement												
Plant and equipment ¹	789	972	1,188	1,409	1,726	2,064	2,357	2,788	2,985	3,210	3,466	
Residential systems ²	210	226	241	256	274	297	323	351	384	406	431	
Agricultural business ³	0	1	1	2	2	3	4	5	5	6	6	
Government enterprise (line 10)	1,121	1,313	1,573	1,846	2,196	2,594	2,987	3,411	3,929	4,566	5,177	
Publicly owned electric utilities	3	4	5	7	9	10	10	12	13	18	17	
Public sewer systems ⁴	1,117	1,308	1,567	1,838	2,187	2,584	2,976	3,399	3,915	4,547	5,159	
Other	(*)	1	1	(*)	1	(*)	1	1	(*)	1	2	
Government (line 12)	2,143	2,477	3,360	5,073	5,652	5,219	6,381	7,301	8,065	7,132	7,009	
Federal (line 13)	75	133	196	271	257	279	316	347	274	220	238	
Federal except highways	70	129	192	266	252	273	310	339	267	208	230	
Highway erosion abatement	5	4	4	5	5	6	7	9	7	12	8	
State and local (line 14)	171	171	189	210	204	188	218	257	299	286	276	
State and local except highways												
Highway erosion abatement	171	171	189	210	204	188	218	257	299	286	276	
Government enterprise fixed capital (line 15)	1,896	2,172	2,976	4,592	5,191	4,752	5,847	6,697	7,491	6,626	6,494	
Publicly owned electric utilities	29	22	29	32	36	52	63	81	61	57	86	
Public sewer systems ⁴	1,867	2,150	2,947	4,560	5,156	4,700	5,783	6,616	7,430	6,568	6,408	
Chain-type quantity indexes, 1992=100												
Business (line 28)	61.1	60.2	59.4	59.1	66.5	71.7	72.1	73.5	70.5	66.6	66.4	
On capital account (line 29)	137.0	123.1	115.9	109.8	125.0	132.9	125.8	122.2	110.9	93.1	85.3	
Motor vehicle emission abatement												
Plant and equipment ¹	108.3	93.1	90.6	105.5	120.7	122.8	107.2	103.6	93.1	87.7	87.6	
Residential systems ²	223.1	212.0	190.6	123.1	139.0	162.9	179.1	175.9	162.1	110.1	81.2	
Agricultural business ³	176.1	176.0	308.7	308.7	311.3	311.3	176.0	130.1	71.4	79.1	66.3	
On current account (line 30)	35.9	39.5	41.0	42.7	47.5	51.9	54.8	57.9	57.6	58.2	60.4	
Private (line 31)	45.5	49.8	52.2	55.0	61.8	67.4	70.5	75.2	72.8	71.0	71.7	
Motor vehicle emission abatement												
Plant and equipment ¹	41.8	46.4	48.8	51.8	59.2	65.2	68.3	73.3	70.5	68.5	69.2	
Residential systems ²	80.1	82.7	85.0	86.4	88.0	89.8	91.9	94.0	95.9	96.1	96.0	
Agricultural business ³	4.7	9.5	19.0	26.6	35.1	44.6	49.3	52.2	54.1	56.9	58.8	
Government enterprise (line 32)	30.3	33.5	34.4	35.4	39.1	42.7	45.5	47.6	48.6	50.5	53.6	
Publicly owned electric utilities	144.0	167.0	174.7	199.7	214.4	222.7	225.2	227.3	227.3	273.1	245.6	
Public sewer systems ⁴	30.2	33.4	34.3	35.3	38.9	42.6	45.4	47.5	48.5	50.4	53.4	
Other	45.5	52.9	91.1	31.8	37.1	27.1	31.3	40.0	5.1	22.8	63.5	
Government (line 34)	49.4	52.4	62.1	91.3	95.4	82.2	90.9	93.0	95.4	78.2	74.4	
Federal (line 35)	20.9	32.8	42.3	55.8	49.8	50.3	51.9	51.2	37.2	27.5	28.6	
Federal except highways	19.7	31.9	41.8	55.3	49.1	49.5	51.4	50.5	36.7	26.2	27.6	
Highway erosion abatement	418.5	348.2	253.5	293.3	322.5	333.6	269.3	324.4	246.1	420.2	322.9	
State and local (line 36)	97.0	87.7	77.3	83.5	80.7	66.0	58.1	65.0	66.9	66.4	71.3	
State and local except highways												
Highway erosion abatement	97.0	87.7	77.3	83.5	80.7	66.0	58.1	65.0	66.9	66.4	71.3	
Government enterprise fixed capital (line 37)	49.9	52.7	63.4	95.4	100.8	86.2	96.7	98.8	102.8	83.9	79.1	
Publicly owned electric utilities	549.9	398.0	428.9	418.2	458.2	633.8	725.8	856.5	589.1	509.4	754.5	
Public sewer systems ⁴	49.2	52.2	62.9	95.0	100.4	85.5	95.9	97.8	102.2	83.4	78.3	
Chain-type price indexes, 1992=100												
Business (line 50)	31.5	35.9	40.7	44.7	47.9	51.5	55.9	61.5	67.9	74.7	79.1	
On capital account (line 51)	31.6	37.8	42.2	45.1	48.2	51.5	55.9	62.1	67.1	72.7	75.4	
Motor vehicle emission abatement												
Plant and equipment ¹	30.6	37.2	43.0	44.8	47.6	50.8	55.2	61.2	66.3	71.7	73.9	
Residential systems ²	32.1	37.7	40.1	44.9	48.6	52.3	56.7	63.0	68.1	73.9	77.5	
Agricultural business ³	42.6	47.3	58.5	66.6	69.6	74.1	80.5	87.5	105.0	108.9	108.9	
On current account (line 52)	31.6	34.0	39.2	44.1	47.3	51.2	55.4	60.7	67.9	75.4	80.6	
Private (line 53)	29.9	32.8	37.4	41.3	44.2	47.8	51.9	57.0	63.2	69.5	74.3	
Motor vehicle emission abatement												
Plant and equipment ¹	29.0	32.1	37.3	41.7	44.7	48.6	52.9	58.3	64.9	71.9	76.8	
Residential systems ²	32.6	33.9	35.2	36.9	38.7	41.1	43.6	46.5	49.8	52.4	55.8	
Agricultural business ³	42.3	52.8	58.1	64.2	68.6	72.0	77.2	88.4	98.3	103.9	105.7	
Government enterprise (line 54)	32.7	34.6	40.4	46.0	49.6	53.6	57.9	63.3	71.4	79.8	85.4	
Publicly owned electric utilities	24.6	26.2	32.2	38.6	41.3	44.9	48.1	52.7	60.5	67.9	73.8	
Public sewer systems ⁴	32.7	34.6	40.4	46.0	49.7	53.6	58.0	63.3	71.4	79.8	85.4	
Other	29.3	31.5	36.6	41.9	44.9	49.2	53.2	58.4	65.6	73.0	78.7	
Government (line 56)	33.0	35.9	41.1	42.2	45.0	48.3	53.3	59.6	64.3	69.3	71.6	
Federal (line 57)	31.2	35.3	40.2	42.1	44.9	48.2	53.0	59.0	64.1	69.5	72.4	
Federal except highways	31.1	35.2	40.0	41.9	44.7	48.0	52.5	58.5	63.5	69.2	72.6	
Highway erosion abatement	32.8	36.2	45.3	46.8	46.9	52.9	69.7	73.4	83.1	80.0	72.0	
State and local (line 58)	32.8	36.2	45.3	46.8	46.9	52.9	69.7	73.4	83.1	80.0	72.0	
State and local except highways												
Highway erosion abatement	32.8	36.2	45.3	46.8	46.9	52.9	69.7	73.4	83.1	80.0	72.0	
Government enterprise fixed capital (line 59)	33.1	36.0	40.9	42.0	44.9	48.0	52.7	59.1	63.6	68.9	71.5	
Publicly owned electric utilities	37.8	40.2	48.3	53.8	55.5	58.6	62.2	67.8	74.2	80.2	81.8	
Public sewer systems ⁴	33.1	35.9	40.9	41.9	44.8	48.0	52.7	59.1	63.5	68.8	71.5	

See footnotes at end of table.

Table 12.—Business and Government Expenditures for Air and Water Pollution Abatement in Current Dollars and Chain-Type Quantity and Price Indexes, 1972–94—Continued

	Water pollution abatement											
	1983	1984	1985	1986	1987	1988	1989	1990	1991	1992	1993	1994 ^P
	Millions of dollars											
Business (line 6)	14,053	15,401	16,205	17,300	18,160	18,617	20,496	23,290	24,043	24,808	25,014	27,210
On capital account (line 7)	4,171	4,759	4,734	4,741	4,610	4,170	4,703	5,801	6,043	6,149	6,029	6,820
Motor vehicle emission abatement												
Plant and equipment ¹	2,422	2,730	2,670	2,534	2,614	2,581	3,196	4,430	4,666	4,532	4,335	4,720
Residential systems ²	1,747	2,026	2,061	2,204	1,993	1,586	1,504	1,368	1,374	1,613	1,691	2,097
Agricultural business ³	2	3	3	3	3	3	3	4	3	4	3	4
On current account (line 8)	9,882	10,641	11,471	12,559	13,550	14,447	15,793	17,489	18,000	18,659	18,985	20,390
Private (line 9)	4,219	4,563	4,905	5,291	5,688	6,069	6,454	7,216	6,988	7,336	7,375	7,983
Motor vehicle emission abatement												
Plant and equipment ¹	3,753	4,052	4,350	4,741	5,088	5,427	5,767	6,492	6,223	6,522	6,513	7,057
Residential systems ²	460	503	547	542	592	634	677	714	756	804	853	916
Agricultural business ³	7	9	8	8	8	8	9	10	9	10	9	10
Government enterprise (line 10)	5,663	6,078	6,566	7,268	7,862	8,378	9,339	10,273	11,012	11,323	11,610	12,407
Publicly owned electric utilities	19	20	10	13	10	12	11	8	14	10	11	10
Public sewer systems ⁴	5,642	6,056	6,553	7,256	7,847	8,362	9,325	10,262	10,995	11,310	11,596	12,394
Other	2	2	3	3	3	3	3	3	3	3	3	3
Government (line 12)	7,029	8,165	9,291	10,190	11,813	11,868	12,322	13,030	12,892	13,158	13,432	14,340
Federal (line 13)	443	492	718	678	720	749	786	843	978	1,151	1,050	1,034
Federal except highways	436	484	711	672	714	742	782	839	974	1,147	1,045	1,021
Highway erosion abatement	8	8	7	6	7	7	4	4	4	4	5	13
State and local (line 14)	290	337	391	426	452	484	489	514	537	538	575	472
State and local except highways												
Highway erosion abatement	290	337	391	426	452	484	489	514	537	538	575	472
Government enterprise fixed capital (line 15)	6,295	7,336	8,182	9,085	10,641	10,635	11,047	11,673	11,378	11,469	11,808	12,834
Publicly owned electric utilities	73	54	63	40	37	28	49	77	64	14	11	10
Public sewer systems ⁴	6,222	7,282	8,119	9,045	10,604	10,607	10,998	11,596	11,314	11,455	11,797	12,825
	Chain-type quantity indexes, 1992=100											
Business (line 28)	68.6	72.1	74.0	78.9	81.6	81.7	86.6	95.8	97.6	100.0	96.6	100.4
On capital account (line 29)	84.7	92.9	90.0	89.0	85.0	74.7	82.2	99.0	100.0	100.0	95.4	104.4
Motor vehicle emission abatement												
Plant and equipment ¹	68.6	74.6	70.5	65.7	66.4	63.2	76.1	102.8	104.9	100.0	93.2	97.8
Residential systems ²	129.4	143.5	143.8	152.8	136.1	106.5	99.0	88.6	86.3	100.0	101.7	122.6
Agricultural business ³	58.7	76.5	89.3	81.4	79.1	70.2	80.6	90.6	88.4	100.0	88.1	104.2
On current account (line 30)	63.4	65.4	68.8	75.6	80.4	84.0	88.0	94.7	96.8	100.0	96.9	99.2
Private (line 31)	74.1	76.5	79.5	85.0	89.6	92.5	94.8	102.8	97.0	100.0	96.4	100.2
Motor vehicle emission abatement												
Plant and equipment ¹	71.8	74.4	77.5	83.5	88.6	91.7	94.3	103.3	96.7	100.0	95.8	100.0
Residential systems ²	96.6	97.4	98.1	98.8	99.3	99.2	99.0	98.6	99.2	100.0	100.8	101.8
Agricultural business ³	60.7	76.9	89.2	81.2	79.0	70.2	80.4	90.5	88.4	100.0	88.1	104.1
Government enterprise (line 32)	56.8	58.6	62.3	69.9	74.7	78.7	83.8	89.7	96.8	100.0	97.3	98.5
Publicly owned electric utilities	249.6	258.5	120.9	120.7	154.4	145.6	123.7	80.9	144.0	100.0	114.6	97.3
Public sewer systems ⁴	56.7	58.4	62.3	69.8	74.6	78.6	83.7	89.7	96.7	100.0	97.3	98.5
Other	73.3	93.6	120.9	112.1	114.6	118.5	114.3	112.0	110.6	100.0	93.1	90.6
Government (line 34)	70.5	79.2	84.8	91.3	103.5	100.0	101.4	104.6	99.7	100.0	99.2	102.5
Federal (line 35)	50.4	54.2	75.1	69.6	72.5	72.7	74.0	77.5	86.7	100.0	88.6	84.5
Federal except highways	49.6	53.4	74.6	69.2	72.1	72.4	73.9	77.4	86.7	100.0	88.5	83.8
Highway erosion abatement	265.6	268.8	201.1	173.0	165.4	156.2	97.7	93.4	101.2	100.0	127.6	301.2
State and local (line 36)	68.2	72.3	71.3	76.5	76.2	72.7	83.4	88.5	94.5	100.0	93.9	70.3
State and local except highways												
Highway erosion abatement	68.2	72.3	71.3	76.5	76.2	72.7	83.4	88.5	94.5	100.0	93.9	70.3
Government enterprise fixed capital (line 37)	72.6	82.0	86.5	94.2	108.1	104.3	105.1	108.2	101.3	100.0	100.6	106.0
Publicly owned electric utilities	607.4	434.8	502.5	315.5	287.0	207.6	349.2	547.5	462.5	100.0	75.2	63.0
Public sewer systems ⁴	71.9	81.6	86.0	94.0	107.9	104.2	104.8	107.6	100.8	100.0	100.6	106.1
	Chain-type price indexes, 1992=100											
Business (line 50)	82.6	86.1	88.3	88.4	89.7	91.8	95.4	98.0	99.3	100.0	104.4	109.2
On capital account (line 51)	80.1	83.3	85.5	86.6	88.2	90.8	93.1	95.3	98.2	100.0	102.7	106.3
Motor vehicle emission abatement												
Plant and equipment ¹	77.9	80.7	83.6	85.1	86.8	90.1	92.7	95.1	98.1	100.0	102.6	106.4
Residential systems ²	83.7	87.5	88.9	89.5	90.8	92.4	94.2	95.7	98.7	100.0	103.1	106.0
Agricultural business ³	113.6	112.5	93.3	96.2	102.2	112.7	117.6	109.2	102.4	100.0	101.6	98.1
On current account (line 52)	83.6	87.2	89.3	89.0	90.3	92.2	96.2	99.0	99.6	100.0	105.0	110.2
Private (line 53)	77.6	81.3	84.1	84.9	86.5	89.5	92.8	95.7	98.2	100.0	104.3	108.6
Motor vehicle emission abatement												
Plant and equipment ¹	80.1	83.5	86.0	87.0	88.1	90.7	93.7	96.4	98.7	100.0	104.2	108.2
Residential systems ²	59.2	64.2	69.3	68.2	74.1	79.5	85.1	90.0	94.7	100.0	105.3	111.9
Agricultural business ³	107.3	110.9	93.3	96.2	102.2	112.7	117.6	109.2	102.4	100.0	101.6	98.1
Government enterprise (line 54)	88.0	91.6	93.0	91.9	93.0	94.0	98.5	101.2	100.5	100.0	105.4	111.2
Publicly owned electric utilities	76.8	80.2	82.7	84.6	85.0	88.0	94.3	96.6	99.8	100.0	100.9	102.8
Public sewer systems ⁴	88.0	91.6	93.1	91.9	93.0	94.0	98.5	101.2	100.5	100.0	105.4	111.2
Other	81.9	85.5	88.2	89.2	90.2	92.8	96.2	98.2	99.5	100.0	107.4	114.0
Government (line 56)	75.8	78.4	83.2	84.8	86.7	90.2	92.3	94.7	98.3	100.0	102.9	106.3
Federal (line 57)	76.4	78.9	83.2	84.7	86.3	89.6	92.3	94.5	98.0	100.0	102.9	106.3
Federal except highways	76.5	79.0	83.1	84.6	86.2	89.4	92.2	94.5	98.0	100.0	102.9	106.2
Highway erosion abatement	79.1	86.5	101.7	103.6	110.1	123.7	109.0	108.0	105.2	100.0	113.7	124.7
State and local (line 58)	79.1	86.5	101.7	103.6	110.1	123.7	109.0	108.0	105.5	100.0	113.7	124.7
State and local except highways												
Highway erosion abatement	79.1	86.5	101.7	103.6	110.1	123.7	109.0	108.0	105.5	100.0	113.7	124.7
Government enterprise fixed capital (line 59)	75.6	78.0	82.5	84.1	85.8	88.9	91.6	94.1	97.9	100.0	102.4	105.6
Publicly owned electric utilities	85.5	89.2	89.7	91.0	92.1	96.7	99.2	100.2	99.0	100.0	103.6	110.0
Public sewer systems ⁴	75.5	77.9	82.5	84.0	85.8	88.9	91.6	94.1	97.9	100.0	102.4	105.6

^P Preliminary.

* Less than \$500,000.

1. Consists of manufacturing companies and of privately and cooperatively owned electric utilities and other non-manufacturing companies.

2. Consists of private septic systems and sewer connections linking household plumbing to street sewers.

3. Feedlot operations only; see footnote 1 to table 7.

4. Public sewer systems consist of treatment plants, collection sewers, interceptor sewers, pumping stations, and dry-waste disposal plants. For consistency with past presentations, spending to operate public sewer systems is classified as business spending, and government purchases of fixed capital for public sewer systems is classified as government spending. Government spending excludes consumption of fixed capital.

NOTE.—Line numbers refer to those in table 11.