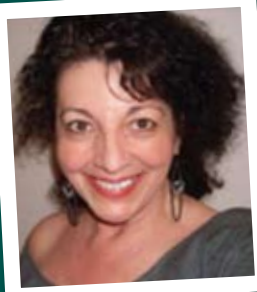


Lung Cancer Research Program





“It was such an honor to serve on a panel comprised of people who shared my passion, and anger, toward this disease. I always thought that lung cancer survivors and their families are the only ones that care, that we are in this fight alone. At the peer review, I learned that armies of people out there care.”

Debi Walsh
Consumer Reviewer



“The effect of lung cancer on Americans is simply staggering. But I remain convinced that LCRP’s distinctive approach of integrating research from multiple disciplines to advance early detection will have a dramatic impact on the lives of lung cancer patients and their families. It has been a privilege to contribute to this innovative program as it continues its efforts to help those affected by this terrible disease.”

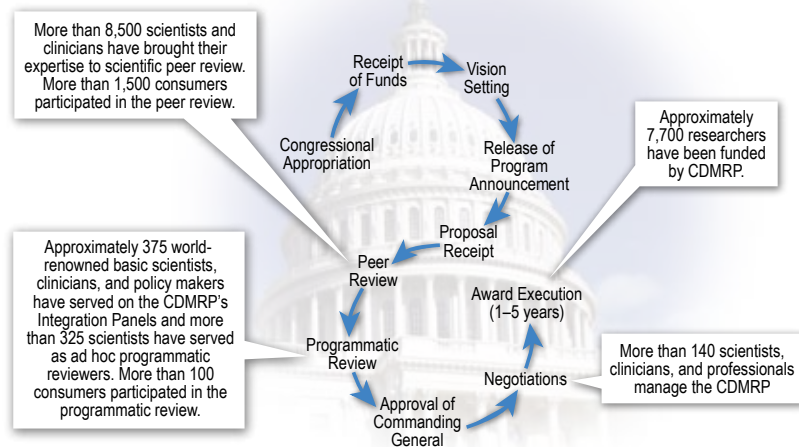
Tom Labrecque
FY10 Integration
Panel Chair

History of the CDMRP

The Congressionally Directed Medical Research Programs (CDMRP) was born from a powerful grassroots effort led by the breast cancer advocacy community that resulted in a congressional appropriation of funds for breast cancer research. The CDMRP was created within the U.S. Army Medical Research and Materiel Command (USAMRMC) to manage these funds, initiating a unique partnership among the public, Congress, and the military. Having grown to encompass multiple targeted research programs, the CDMRP has received \$6 billion in appropriations since its inception in fiscal year 1993 (FY93) through FY10. Funds for the CDMRP are added to the Department of Defense (DOD) budget annually, where support for individual programs such as the Lung Cancer Research Program (LCRP) is allocated via specific guidance from Congress.

Proposal Review Process

The CDMRP program management cycle includes a two-tier review process for proposal evaluation recommended by the National Academy of Sciences’ Institute of Medicine. Each level of review is conducted by panels composed of scientists and clinicians who are subject matter experts and consumers. The first tier of evaluation is an external scientific peer review of applications against established criteria for determining scientific merit. The second tier is a programmatic review conducted by members of an Integration Panel who compare submissions and make funding recommendations based on relative scientific merit, portfolio balance, and relevance to program goals.



Consumer Advocacy Participation

A unique aspect of the CDMRP is the active participation of consumer representatives throughout the program’s annual cycle. Consumers work collaboratively with leading scientists and clinicians in setting program priorities, reviewing proposals, and making funding recommendations. From personal experience—as a survivor of lung cancer—a consumer brings a unique perspective and a sense of urgency and focus to all levels of decision making. Consumers evaluate proposals based on the potential impact and benefit to the patient population, encouraging funding recommendations that reflect the concerns of patients, their families, and the clinicians who treat them.

Lung Cancer Research Program

As the second most commonly diagnosed cancer among both men and women, lung cancer is the most lethal of all types of cancer, taking more lives each year than all other major cancers combined. In the United States alone it is estimated that 222,520 new cases will be diagnosed and 157,300 deaths will occur due to lung cancer this year. The LCRP challenges the scientific community to design innovative research that will foster the development of integrated components to identify, treat, and manage early curable lung cancer. In FY09 LCRP received an appropriation of \$20 million for research that resulted in 29 awards. The types of awards that were funded included 13 Concepts, 3 Clinical Fellow Research Awards, 4 Lung Cancer Promising Clinician Research Awards, 1 Lung Cancer Biospecimen Resource Network Award, and 8 Collaborative Translational Research Awards.

FY10 Investment Strategy

The LCRP will offer a Clinical Consortium Award in FY10. The intent of the award is to fund clinical studies focused on characterizing, developing, and/or improving early detection modalities for lung cancer with the aim of changing current clinical practice that leads to improved patient outcomes.



VISION

Eradicate deaths from lung cancer to better the health and welfare of the military and the American public.

MISSION

Support and integrate research from multiple disciplines for early detection, diagnosis, prevention, cure, and control of lung cancer.



“Most Americans have no idea that lung cancer is the leading cancer killer and the most diagnosed.” – Montessa Lee

“I try to advocate for myself and others in any way possible. I strongly believe we need advances in early detection and more treatment options to offer individualized treatment plans.” Montessa is a survivor of lung cancer and is dedicated to giving a voice to this disease in her community. “I was diagnosed with small cell lung cancer at the age of 28—an x-ray revealed a 15 cm mass in my chest. I didn’t smoke and I wasn’t around smokers so I wondered where the cancer had come from. When I began to research lung cancer, I became painfully aware of the grim statistics. I learned that research, prevention efforts, and treatment for our disease were grossly underfunded.”

Montessa believes “knowledge and research funding are two major factors that can help with the advancement in treatment for lung cancer patients and their caregivers.” In her drive to increase lung cancer awareness, Montessa served as a consumer reviewer during the scientific peer review of applications to this program. “Here were scientists engaged every day in lung cancer research. Here was hope for future advancements and promising innovative treatment options for lung cancer patients. I learned that the consumer perspective is integral to all this and that is the message I hope to convey to anyone I encounter affected by lung cancer.”



“It was an honor to chair the inaugural LCRP [integration panel]. The funding from this program has the potential to transform lung cancer screening, diagnosis, and treatment. I have no doubt that the ensuing results will lead to longer and better lives for people with lung cancer.”

Regina Vidaver, Ph.D.
FY09 Integration Panel
Chair Emeritus



For more information, visit
<http://cdmrp.army.mil>
or contact us at:
CDMRP.PublicAffairs@amedd.army.mil
(301) 619-7071

