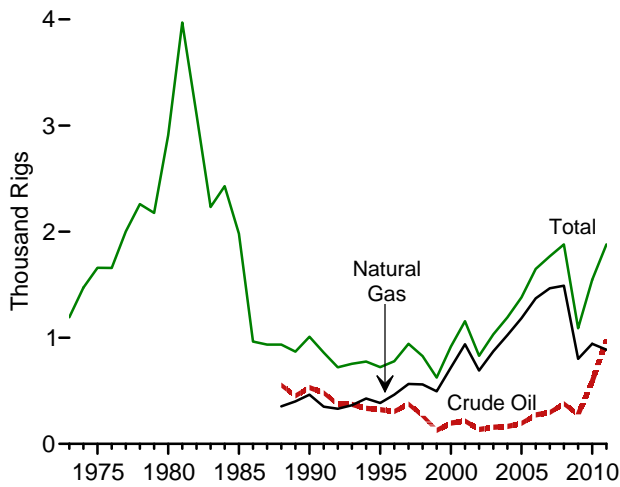


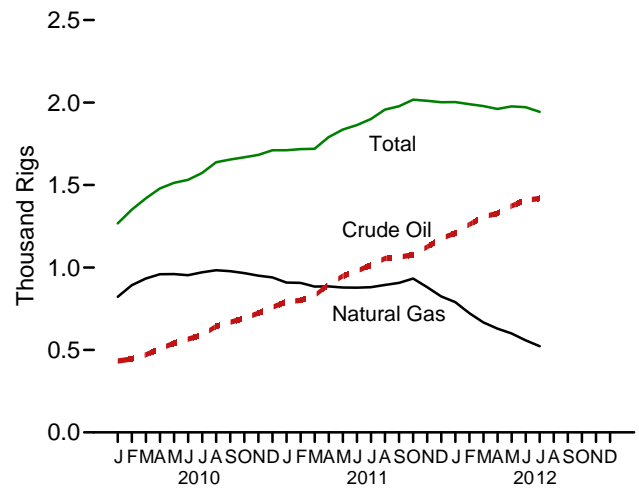
5. Crude Oil and Natural Gas Resource Development

Figure 5.1 Crude Oil and Natural Gas Resource Development Indicators

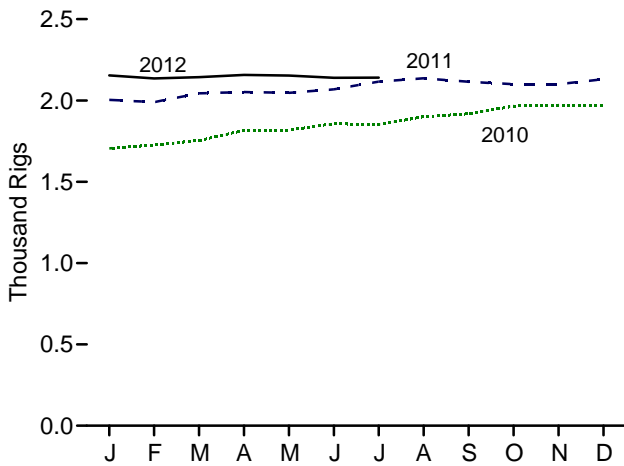
Rotary Rigs in Operation by Type, 1973-2011



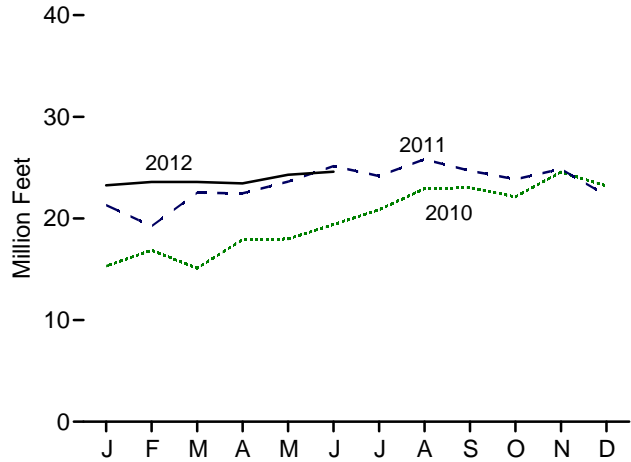
Rotary Rigs in Operation by Type, Monthly



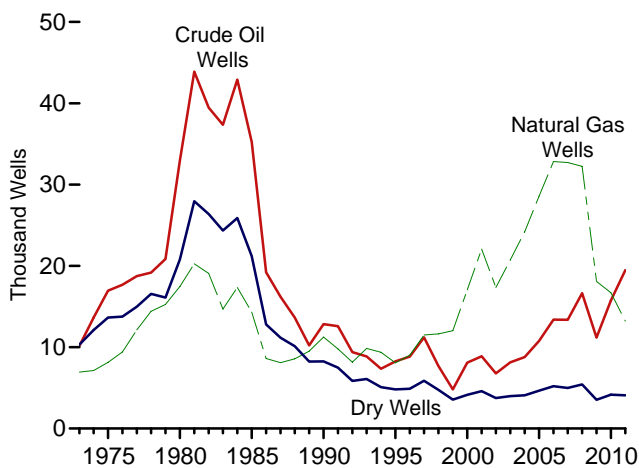
Active Well Service Rig Count, Monthly



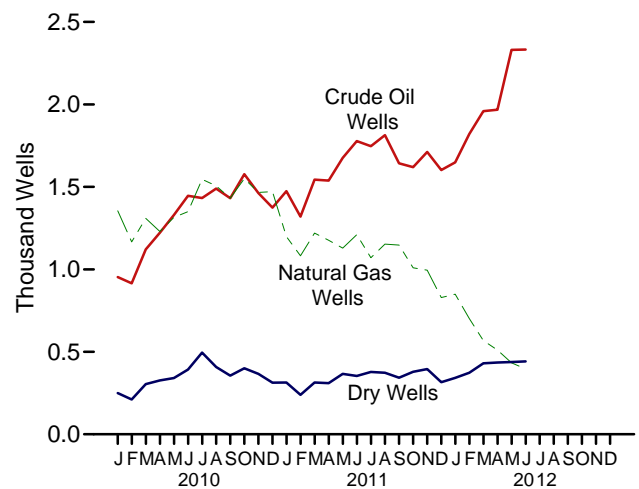
Footage Drilled, Monthly



Total Wells Drilled by Type, 1973-2011



Total Wells Drilled by Type, Monthly



Web Page: <http://www.eia.gov/totalenergy/data/monthly/#crude>.
Sources: Tables 5.1 and 5.2.

Table 5.1 Crude Oil and Natural Gas Drilling Activity Measurements
(Number of Rigs)

	Rotary Rigs in Operation ^a					Active Well Service Rig Count ^c
	By Site		By Type		Total ^b	
	Onshore	Offshore	Crude Oil	Natural Gas		
1973 Average	1,110	84	NA	NA	1,194	2,008
1975 Average	1,554	106	NA	NA	1,660	2,486
1980 Average	2,678	231	NA	NA	2,909	4,089
1985 Average	1,774	206	NA	NA	1,980	4,716
1990 Average	902	108	532	464	1,010	3,658
1995 Average	622	101	323	385	723	3,041
1996 Average	671	108	306	464	779	3,445
1997 Average	821	122	376	564	943	3,499
1998 Average	703	123	264	560	827	3,014
1999 Average	519	106	128	496	625	2,232
2000 Average	778	140	197	720	918	2,692
2001 Average	1,003	153	217	939	1,156	2,267
2002 Average	717	113	137	691	830	1,830
2003 Average	924	108	157	872	1,032	1,967
2004 Average	1,095	97	165	1,025	1,192	2,064
2005 Average	1,287	94	194	1,184	1,381	2,222
2006 Average	1,559	90	274	1,372	1,649	2,364
2007 Average	1,695	72	297	1,466	1,768	2,388
2008 Average	1,814	65	379	1,491	1,879	2,515
2009 Average	1,046	44	278	801	1,089	1,722
2010						
January	1,225	42	433	822	1,267	1,706
February	1,305	45	446	892	1,350	1,726
March	1,368	51	471	933	1,419	1,754
April	1,426	53	508	959	1,479	1,816
May	1,464	49	541	960	1,513	1,818
June	1,511	20	566	953	1,531	1,857
July	1,558	15	591	971	1,573	1,852
August	1,619	20	644	983	1,638	1,900
September	1,635	19	668	977	1,655	1,918
October	1,647	21	693	966	1,668	1,965
November	1,662	22	723	950	1,683	1,971
December	1,687	24	759	940	1,711	1,968
Average	1,514	31	591	943	1,546	1,854
2011						
January	1,686	26	793	909	1,711	2,004
February	1,692	26	801	907	1,718	1,990
March	1,694	26	830	884	1,720	2,044
April	1,762	28	896	885	1,790	2,052
May	1,804	32	948	878	1,836	2,047
June	1,829	34	979	877	1,863	2,069
July	1,865	35	1,014	880	1,900	2,116
August	1,923	35	1,055	894	1,957	2,136
September	1,946	32	1,063	907	1,978	2,115
October	1,982	35	1,077	933	2,017	2,100
November	1,974	37	1,125	880	2,011	2,100
December	1,961	42	1,177	824	2,002	2,131
Average	1,846	32	984	887	1,879	2,075
2012						
January	1,961	42	1,208	790	2,003	2,154
February	1,949	42	1,261	723	1,990	2,135
March	1,935	43	1,307	667	1,979	2,143
April	1,917	44	1,329	629	1,961	2,157
May	1,931	46	1,373	600	1,977	2,153
June	1,923	49	1,409	558	1,972	2,139
July	1,894	51	1,419	522	1,944	2,140
7-Month Average	1,930	45	1,331	639	1,975	2,146
2011 7-Month Average	1,765	30	899	888	1,795	2,046
2010 7-Month Average	1,414	39	511	930	1,453	1,790

^a Rotary rigs in operation are reported weekly. Monthly data are averages of 4- or 5-week reporting periods, not calendar months. Multi-month data are averages of the reported data over the covered months, not averages of the weekly data. Annual data are averages over 52 or 53 weeks, not calendar years. Published data are rounded to the nearest whole number.

^b Sum of rigs drilling for crude oil, rigs drilling for natural gas, and other rigs (not shown) drilling for miscellaneous purposes, such as service wells, injection wells, and stratigraphic tests.

^c The number of rigs doing true workovers (where tubing is pulled from the well), or doing rod string and pump repair operations, and that are, on average, crewed and working every day of the month.

NA=Not available.

Note: Geographic coverage is the 50 States and the District of Columbia.

Web Page: See <http://www.eia.gov/totalenergy/data/monthly/#crude> for all available data beginning in 1973.

Sources: • **Rotary Rigs in Operation:** Baker Hughes, Inc., Houston, TX, *Rotary Rigs Running—by State*, used with permission. See http://investor.shareholder.com/bhi/rig_counts/rc_index.cfm. • **Active Well Service Rig Count:** Cameron International Corporation, Houston, TX. See <http://www.c-a-m.com/Forms/Product.aspx?prodID=cdc209c4-79a3-47e5-99c2-fdeda6d4aad6>.

Table 5.2 Crude Oil and Natural Gas Exploratory and Development Wells

	Wells Drilled												Total Footage Drilled Thousand Feet
	Exploratory				Development				Total				
	Crude Oil	Natural Gas	Dry	Total	Crude Oil	Natural Gas	Dry	Total	Crude Oil	Natural Gas	Dry	Total	
	Number												
1973 Total	642	1,067	5,952	7,661	9,525	5,866	4,368	19,759	10,167	6,933	10,320	27,420	138,223
1975 Total	982	1,248	7,129	9,359	15,966	6,879	6,517	29,362	16,948	8,127	13,646	38,721	180,494
1980 Total	1,777	2,099	9,081	12,957	31,182	15,362	11,704	58,248	32,959	17,461	20,785	71,205	316,943
1985 Total	1,680	1,200	8,954	11,834	33,581	13,124	12,257	58,962	35,261	14,324	21,211	70,796	314,409
1990 Total	778	811	3,652	5,241	12,061	10,435	4,593	27,089	12,839	11,246	8,245	32,330	156,044
1995 Total	570	558	2,024	3,152	7,678	7,524	2,790	17,992	8,248	8,082	4,814	21,144	117,156
1996 Total	489	576	1,956	3,021	8,347	8,451	2,934	19,732	8,836	9,027	4,890	22,753	126,365
1997 Total	491	562	2,113	3,166	10,715	10,936	3,761	25,412	11,206	11,498	5,874	28,578	161,249
1998 Total	327	566	1,590	2,483	7,355	11,073	3,171	21,599	7,682	11,639	4,761	24,082	137,202
1999 Total	197	570	1,157	1,924	4,608	11,457	2,393	18,458	4,805	12,027	3,550	20,382	102,861
2000 Total	288	657	1,341	2,286	7,802	16,394	2,805	27,001	8,090	17,051	4,146	29,287	144,425
2001 Total	357	1,052	1,733	3,142	8,531	21,020	2,865	32,416	8,888	22,072	4,598	35,558	180,141
2002 Total	258	844	1,282	2,384	6,517	16,498	2,472	25,487	6,775	17,342	3,754	27,871	145,159
2003 Total	350	997	1,297	2,644	7,779	19,725	2,685	30,189	8,129	20,722	3,982	32,833	177,239
2004 Total	383	1,671	1,350	3,404	8,406	22,515	2,732	33,653	8,789	24,186	4,082	37,057	204,279
2005 Total	539	2,141	1,462	4,142	10,240	26,449	3,191	39,880	10,779	28,590	4,653	44,022	240,307
2006 Total	646	2,456	1,547	4,649	12,739	30,382	3,659	46,780	13,385	32,838	5,206	51,429	282,675
2007 Total	R 808	R 2,794	R 1,582	R 5,184	R 12,563	R 29,925	R 3,399	R 45,887	R 13,371	R 32,719	R 4,981	R 51,071	R 301,515
2008 Total	R 897	R 2,345	R 1,715	R 4,957	R 15,736	R 29,901	R 3,708	R 49,345	R 16,633	R 32,246	R 5,423	R 54,302	R 334,141
2009 Total	R 605	R 1,206	R 1,055	R 2,866	R 10,585	R 16,882	R 2,470	R 29,937	R 11,190	R 18,088	R 3,525	R 32,803	R 231,562
2010													
January	R 55	R 91	R 81	R 227	R 898	R 1,264	R 169	R 2,331	R 953	R 1,355	R 250	R 2,558	R 15,304
February	R 44	R 71	R 67	R 182	R 871	R 1,096	R 144	R 2,111	R 915	R 1,167	R 211	R 2,293	R 16,862
March	R 59	R 85	R 88	R 232	R 1,062	R 1,224	R 216	R 2,502	R 1,121	R 1,309	R 304	R 2,734	R 15,102
April	R 49	R 78	R 77	R 204	R 1,173	R 1,152	R 249	R 2,574	R 1,222	R 1,230	R 326	R 2,778	R 17,904
May	R 48	R 107	R 86	R 241	R 1,282	R 1,208	R 255	R 2,745	R 1,330	R 1,315	R 341	R 2,986	R 17,987
June	R 61	R 100	R 90	R 251	R 1,385	R 1,250	R 302	R 2,937	R 1,446	R 1,350	R 392	R 3,188	R 19,408
July	R 46	R 103	R 105	R 254	R 1,386	R 1,443	R 390	R 3,219	R 1,432	R 1,546	R 495	R 3,473	R 20,847
August	R 56	R 104	R 94	R 254	R 1,434	R 1,402	R 314	R 3,150	R 1,490	R 1,506	R 408	R 3,404	R 22,923
September	R 57	R 73	R 88	R 218	R 1,374	R 1,358	R 268	R 3,000	R 1,431	R 1,431	R 356	R 3,218	R 23,037
October	R 75	R 87	R 117	R 279	R 1,502	R 1,463	R 283	R 3,248	R 1,577	R 1,550	R 400	R 3,527	R 22,123
November	R 62	R 114	R 103	R 279	R 1,400	R 1,352	R 263	R 3,015	R 1,462	R 1,466	R 366	R 3,294	R 24,561
December	R 57	R 92	R 70	R 219	R 1,317	R 1,379	R 243	R 2,939	R 1,374	R 1,471	R 313	R 3,158	R 23,189
Total	R 669	R 1,105	R 1,066	R 2,840	R 15,084	R 15,591	R 3,096	R 33,771	R 15,753	R 16,696	R 4,162	R 36,611	R 239,247
2011													
January	R 66	R 73	R 79	R 218	R 1,408	R 1,126	R 235	R 2,769	R 1,474	R 1,199	R 314	R 2,987	R 21,306
February	R 59	R 57	R 56	R 172	R 1,261	R 1,025	R 183	R 2,469	R 1,320	R 1,082	R 239	R 2,641	R 19,243
March	R 63	R 75	R 63	R 201	R 1,481	R 1,145	R 251	R 2,877	R 1,544	R 1,220	R 314	R 3,078	R 22,524
April	R 68	R 68	R 62	R 198	R 1,470	R 1,108	R 248	R 2,826	R 1,538	R 1,176	R 310	R 3,024	R 22,474
May	R 80	R 83	R 79	R 242	R 1,596	R 1,046	R 287	R 2,929	R 1,676	R 1,129	R 366	R 3,171	R 23,619
June	R 80	R 90	R 73	R 243	R 1,698	R 1,120	R 281	R 3,099	R 1,778	R 1,210	R 354	R 3,342	R 25,148
July	R 85	R 70	R 101	R 256	R 1,662	R 1,001	R 277	R 2,940	R 1,747	R 1,071	R 378	R 3,196	R 24,175
August	R 72	R 69	R 73	R 214	R 1,742	R 1,084	R 300	R 3,126	R 1,814	R 1,153	R 373	R 3,340	R 25,810
September	R 82	R 53	R 73	R 208	R 1,561	R 1,094	R 270	R 2,925	R 1,643	R 1,147	R 343	R 3,133	R 24,689
October	R 72	R 52	R 97	R 221	R 1,548	R 957	R 282	R 2,787	R 1,620	R 1,009	R 379	R 3,008	R 23,857
November	R 85	R 54	R 99	R 238	R 1,627	R 941	R 296	R 2,864	R 1,712	R 995	R 395	R 3,102	R 24,867
December	R 71	R 41	R 86	R 198	R 1,531	R 788	R 230	R 2,549	R 1,602	R 829	R 316	R 2,747	R 22,253
Total	R 883	R 785	R 941	R 2,609	R 18,585	R 12,435	R 3,140	R 34,160	R 19,468	R 13,220	R 4,081	R 36,769	R 279,965
2012													
January	R 82	R 40	R 82	R 204	R 1,567	R 809	R 260	R 2,636	R 1,649	R 849	R 342	R 2,840	R 23,257
February	R 89	R 15	R 93	R 197	R 1,731	R 687	R 280	R 2,698	R 1,820	R 702	R 373	R 2,895	R 23,590
March	R 92	R 7	R 91	R 190	R 1,867	R 561	R 339	R 2,767	R 1,959	R 568	R 430	R 2,957	R 23,592
April	R 93	R 7	R 95	R 195	R 1,875	R 504	R 340	R 2,719	R 1,968	R 511	R 435	R 2,914	R 23,444
May	112	0	97	209	2,219	433	341	2,993	2,331	433	438	3,202	24,304
June	113	0	100	213	2,220	396	342	2,958	2,333	396	442	3,171	24,592
6-Month Total	581	69	558	1,208	11,479	3,390	1,902	16,771	12,060	3,459	2,460	17,979	142,778
2011 6-Month Total	416	446	412	1,274	8,914	6,570	1,485	16,969	9,330	7,016	1,897	18,243	134,314
2010 6-Month Total	316	532	489	1,337	6,671	7,194	1,335	15,200	6,987	7,726	1,824	16,537	102,567

R=Revised.

Notes: • Data are estimates. • Prior to 1990, these well counts include only the original drilling of a hole intended to discover or further develop already discovered crude oil or natural gas resources. Other drilling activities, such as drilling an old well deeper, drilling of laterals from the original well, drilling of service and injection wells, and drilling for resources other than crude oil or natural gas are excluded. After 1990, a new well is defined as the first hole in the ground whether it is lateral or not. Due to the methodology used to estimate ultimate well counts from the available partially reported data, the counts shown on this page are frequently

revised. See Note, "Crude Oil and Natural Gas Exploratory and Development Wells," at end of section. • Geographic coverage is the 50 States and the District of Columbia.

Web Page: See <http://www.eia.gov/totalenergy/data/monthly/#crude> for all available data beginning in 1973.

Sources: • **1973-1989:** U.S. Energy Information Administration (EIA) computations based on well reports submitted to the American Petroleum Institute. • **1990 forward:** EIA computations based on well reports submitted to IHS, Inc., Denver, CO.

Crude Oil and Natural Gas Resource Development

Note. Crude Oil and Natural Gas Exploratory and Development Wells. Three well types are considered in the *Monthly Energy Review (MER)* drilling statistics: “completed for crude oil,” “completed for natural gas,” and “dry hole.” Wells that productively encounter both crude oil and natural gas are categorized as “completed for crude oil.” Both development wells and exploratory wells (new field wildcats, new pool tests, and extension tests) are included in the statistics. All other classes of wells drilled in connection with the search for producible hydrocarbons are excluded. If a lateral is drilled at the same time as the original hole it is not counted separately, but its footage is included.

Prior to the March 1985 MER, drilling statistics consisted of

completion data for the above types and classes of wells as reported to the American Petroleum Institute (API) during a given month. Due to time lags between the date of well completion and the date of completion reporting to the API, as-reported well completions proved to be an inaccurate indicator of drilling activity. During 1982, for example, as-reported well completions rose, while the number of actual completions fell. Consequently, the drilling statistics published since the March 1985 MER are U.S. Energy Information Administration (EIA) estimates produced by statistically imputing well counts and footage based on the partial data available from the API. These estimates are subject to continuous revision as new data, some of which pertain to earlier months and years, become available. Additional information about the EIA estimation methodology may be found in “Estimating Well Completions,” a feature article published in the March 1985 MER.

THIS PAGE INTENTIONALLY LEFT BLANK