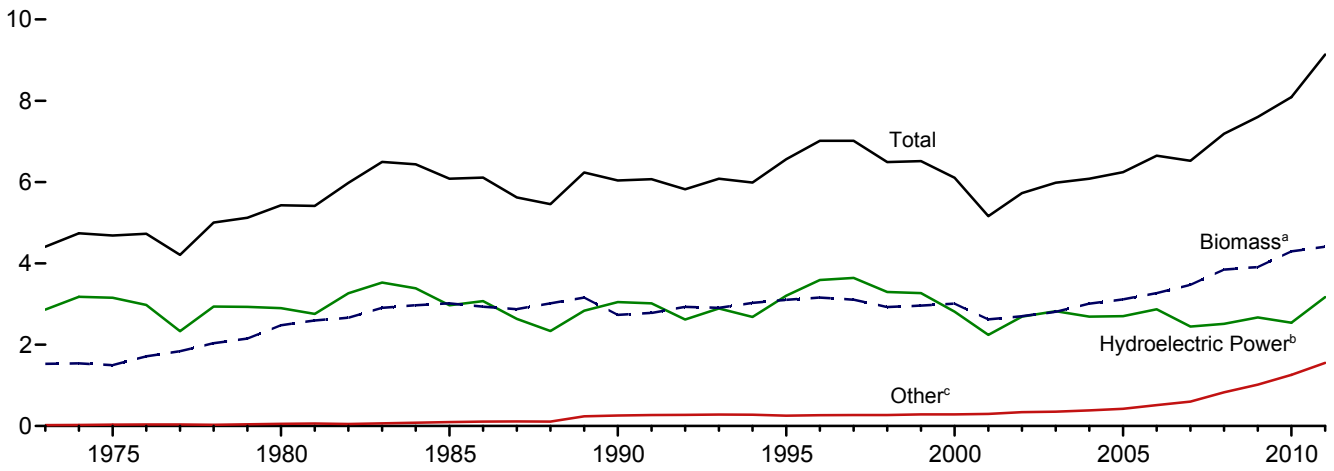
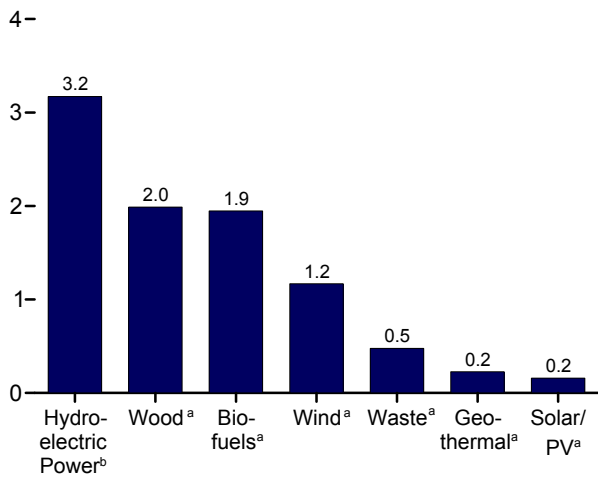


Figure 10.1 Renewable Energy Consumption
(Quadrillion Btu)

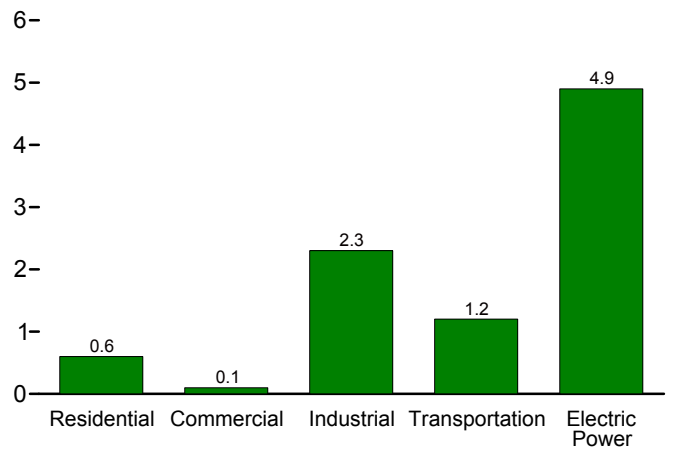
Total and Major Sources, 1973-2011



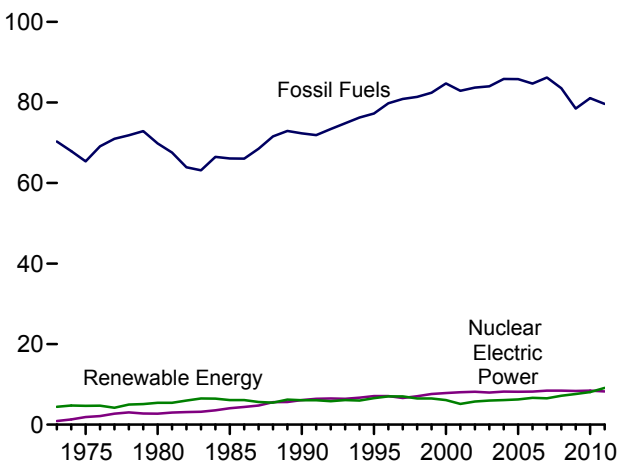
By Source, 2011



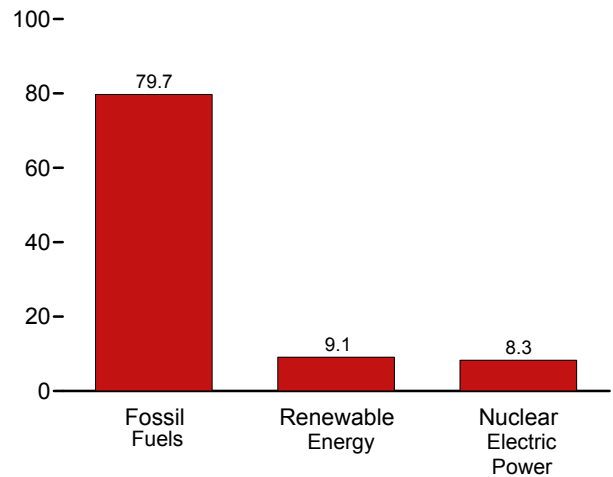
By Sector, 2011



Compared With Other Resources, 1973-2011



Compared With Other Resources, 2011



^a See Table 10.1 for definition.
^b Conventional hydroelectric power.
^c Geothermal, solar/PV, and wind.

Web Page: <http://www.eia.gov/totalenergy/data/monthly/#renewable>.
Sources: Tables 1.3 and 10.1-10.2c.