

Baton Rouge Area Selected Economic Data

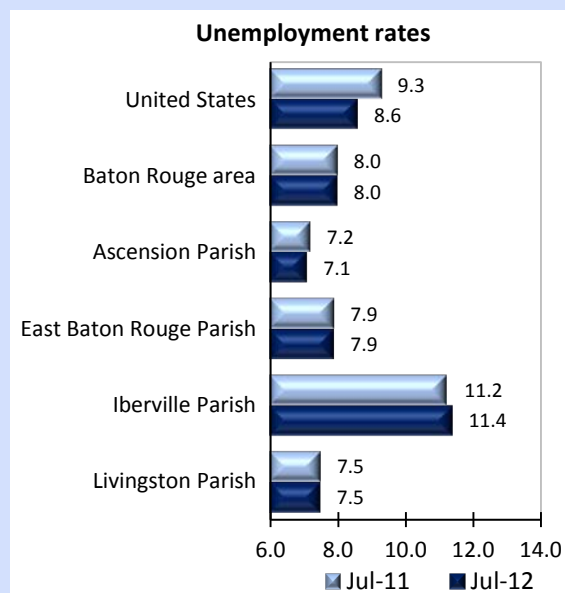


Updated August 29, 2012

www.bls.gov

This fact sheet presents a sampling of data for the **Baton Rouge** area. Supplemental data are provided for regions and the nation. Subjects include **unemployment, employment, wages, prices, spending, and benefits**. All data are not seasonally adjusted and some may be subject to revision. Area definitions may differ by subject. See www.bls.gov/regions/overviews.htm for more area fact sheets and area definitions.

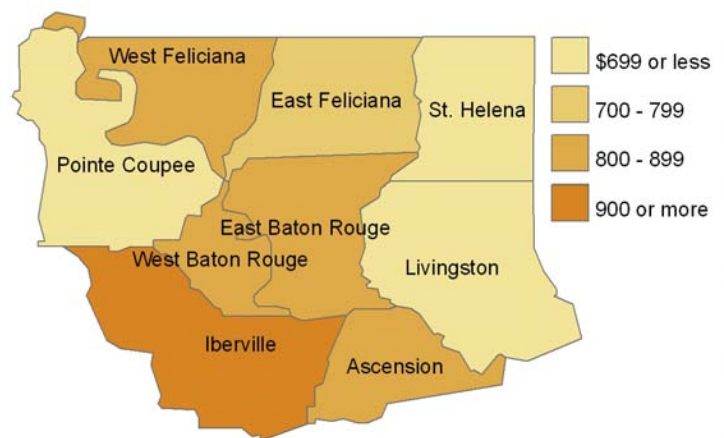
Unemployment rates for the Baton Rouge area, selected area counties, and the nation



Source: U.S. BLS, Local Area Unemployment Statistics

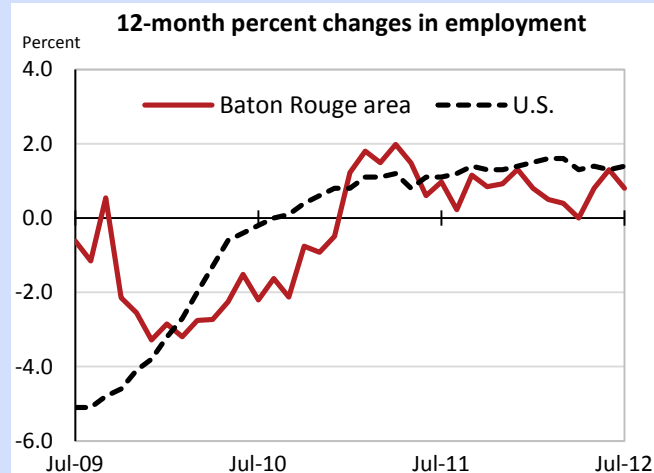
Average weekly wages for all industries by county

Baton Rouge, 4th quarter 2011
(U.S. = \$955; Area = \$870)



Source: U.S. BLS, Quarterly Census of Employment and Wages

Over-the-year changes in employment on nonfarm payrolls and employment by major industry sector

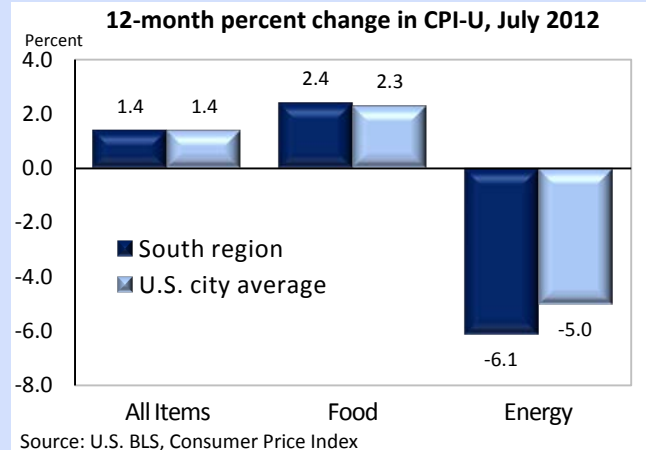


Source: U.S. BLS, Current Employment Statistics

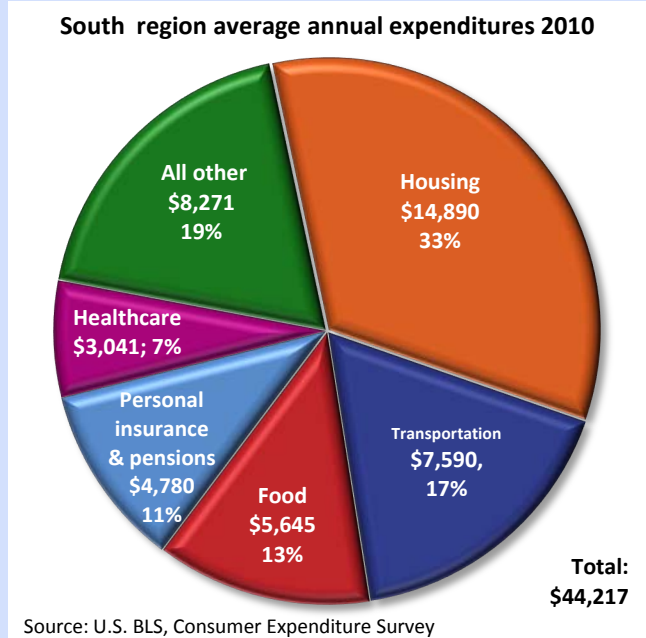
Baton Rouge area employment (numbers in thousands)	Jul. 2012	Change from Jul. 2011 to Jul. 2012	
		Number	Percent
Total nonfarm	365.7	2.8	0.8
Mining and logging	2.0	0.0	0.0
Construction	43.3	4.3	11.0
Manufacturing	25.4	0.2	0.8
Trade, transportation, and utilities	66.0	1.1	1.7
Information	4.4	-0.2	-4.3
Financial activities	16.7	-0.1	-0.6
Professional and business services	41.9	-0.6	-1.4
Education and health services	49.2	0.0	0.0
Leisure and hospitality	33.5	0.4	1.2
Other services	12.6	0.0	0.0
Government	70.7	-2.3	-3.2

Source: U.S. BLS, Current Employment Statistics

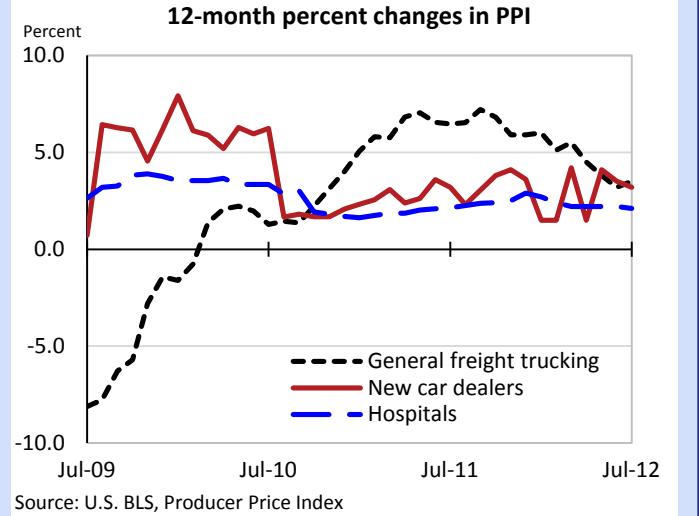
Over-the-year change in the prices paid by urban consumers for selected categories



Average annual spending and percent distribution for selected categories



Over-the-year changes in the selling prices received by producers for selected industries nationwide



Average hourly wages for selected occupations

Occupation	Baton Rouge area	United States
Total, all occupations	\$19.14	\$21.74
General dentists	73.79	77.76
Lawyers	54.69	74.88
Computer systems analysts	30.87	39.58
Registered nurses	30.20	33.23
Accountants and auditors	28.90	33.72
Computer support specialists	23.27	24.91
Customer service representatives	14.04	15.92
Construction laborers	12.54	16.43
Medical secretaries	12.13	15.59
Laborers and material movers	11.55	12.62
Retail salespersons	11.04	12.08
Fast food cooks	8.39	9.00

Source: U.S. BLS, Occupational Employment Statistics, May 2011

Employer costs per hour worked for wages and selected employee benefits by geographic division

Private industry, March 2012	West South Central (1)	United States
Total compensation	\$26.63	\$28.78
Wages and salaries	18.89	20.25
Total benefits	7.74	8.53
Paid leave	1.75	1.98
Vacation	0.88	1.02
Supplemental pay	1.03	0.83
Insurance	1.98	2.34
Retirement and savings	0.91	1.02
Legally required benefits	2.07	2.36

(1) West South Central includes AR, LA, OK, and TX.
Source: U.S. BLS, Employer Costs for Employee Compensation

Over-the-year changes in wages and salaries

