



KEY IMAGESCAN FEATURES

- Consists of a CD and a USB device, which are provided to each investigator during comprehensive hands-on training
- Can boot and view graphics and movies on most PCs and laptops manufactured and sold in the past 10 years
- Alters no files on the subject's computer
- Creates and saves a directory listing of pictures
- Allows the investigator to view files and copy specific files to the USB device to support further investigation
- Permits the investigator to write the contents of the USB device to CD-ROM using the ImageScan software
- Provides a forensically sound method for wiping the USB device between uses so it is ready for the next case
- Includes ongoing support



CONTACT INFORMATION

E-mail: imagescan@rcfl.gov

RCFL National Program Office

ERF Building 27958-A
Quantico, VA 22135
Telephone: 703-985-3677
Web site: www.rcfl.gov

FBI CART Headquarters

ERF Building 27958-A
Quantico, VA 22135
Telephone: 703-985-3326

Local RCFLs

Chicago RCFL
www.chicagorcfl.org

North Texas RCFL
www.ntrcfl.org

Greater Houston RCFL
www.ghrcfl.org

Northwest RCFL
www.nwrcfl.org

Heart of America RCFL
www.harfcfl.org

Orange County RCFL
www.ocrcfl.org

Intermountain West RCFL
www.iwrcfl.org

Philadelphia RCFL
www.phrcfl.org

Kentucky RCFL
www.kentuckyrcfl.org

Rocky Mountain RCFL
www.rmrcfl.org

Miami Valley RCFL
www.mvrcfl.org

San Diego RCFL
www.sdrfcfl.org

New Jersey RCFL
www.njrcfl.org

Silicon Valley RCFL
www.svrcfl.org

New Mexico RCFL
www.nmrcfl.org

Western New York RCFL
www.wnyrcfl.org



ImageScan is a software tool that enables investigators to identify and isolate images on a suspect's computer and then store them on a USB device. This process allows officers to collect data necessary to obtain search warrants or to detain subjects pending a more comprehensive search. ImageScan is designed to support "knock and talk" situations in child exploitation cases. To date, thousands of law enforcement personnel have been trained to employ this easy-to-use software.



The ImageScan tool consists of a CD and a USB device.



On scene, you obtain consent from the subject to search the computer.



On scene, you insert the CD, USB device in the subject's computer and turn it on to review graphics and movies.



Back at the office, you can review the evidence and write the files to CD to provide to a court or store as evidence, allowing reuse of the USB device.

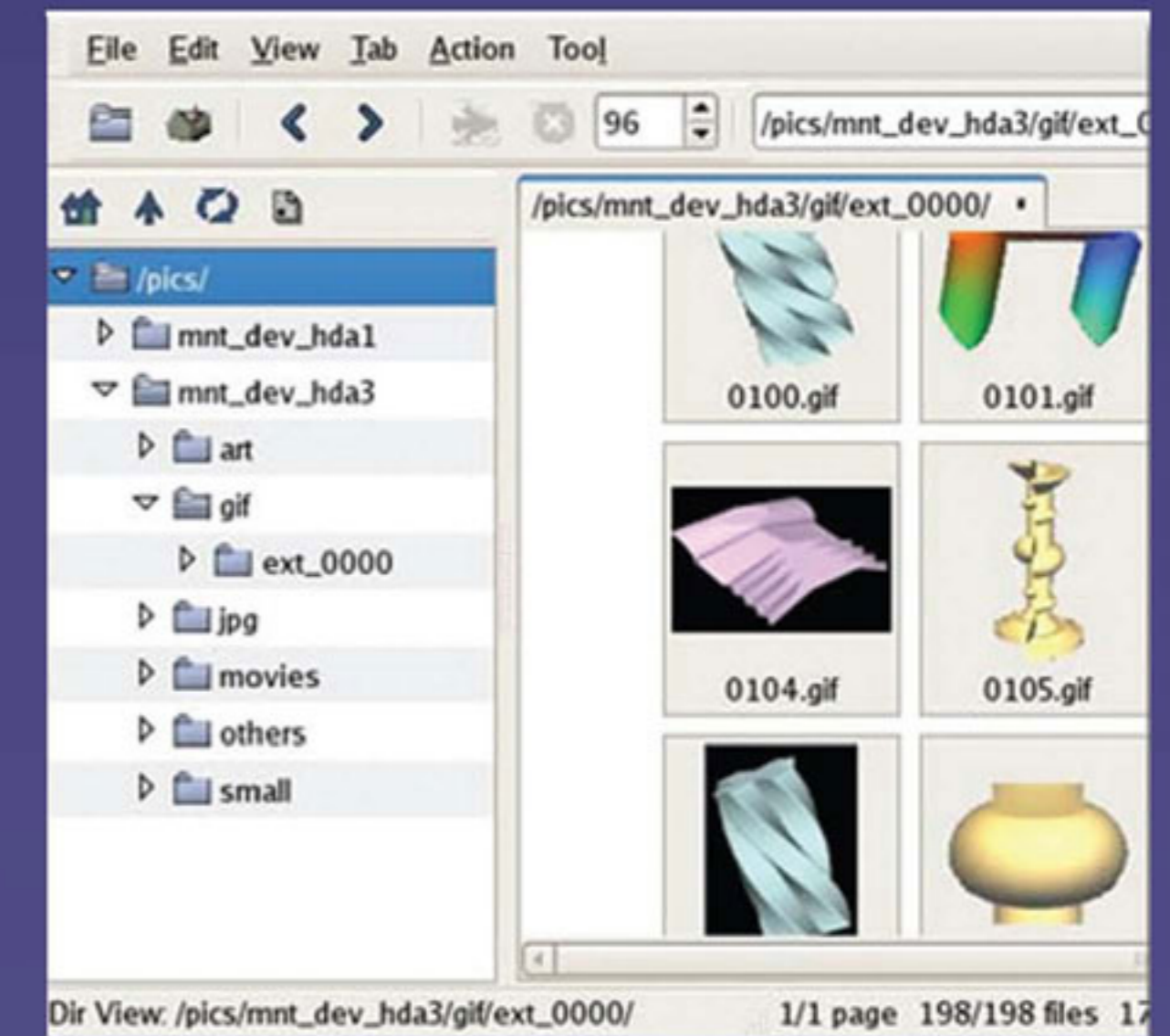


ABOUT IMAGESCAN

ImageScan is a preview tool developed by the FBI CART Unix Program for the Innocent Images National Initiative to aid field investigators in safely viewing a variety of graphics formats on a subject's computer. ImageScan uses a customized Linux boot CD in conjunction with a mass storage USB device that allows investigators in the field to access the graphics files on a subject's computer while making absolutely no changes to any files. When this system is used for consent searches, it maintains the forensic integrity of the computer viewed for subsequent forensic examination in a laboratory environment.

ImageScan classes are open to all law enforcement personnel. Students who successfully complete the class receive an ImageScan CD and USB device free of charge.

IMAGESCAN 3



MEDIA PLAYER

