

OE ENERGY MARKET SNAPSHOT

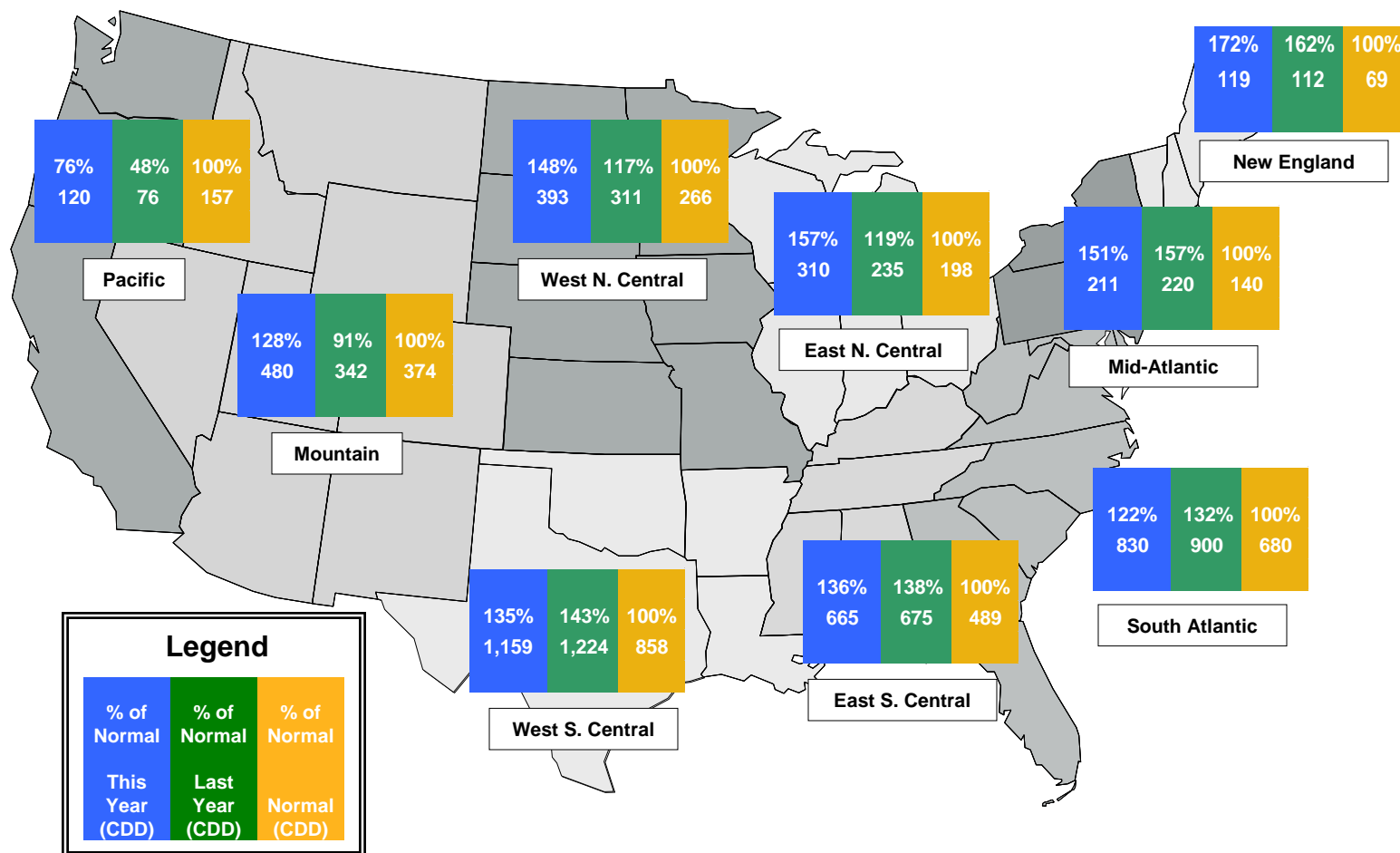
Southeast States Version – July 2012 Data

Office of Enforcement
Federal Energy Regulatory Commission
August 2012



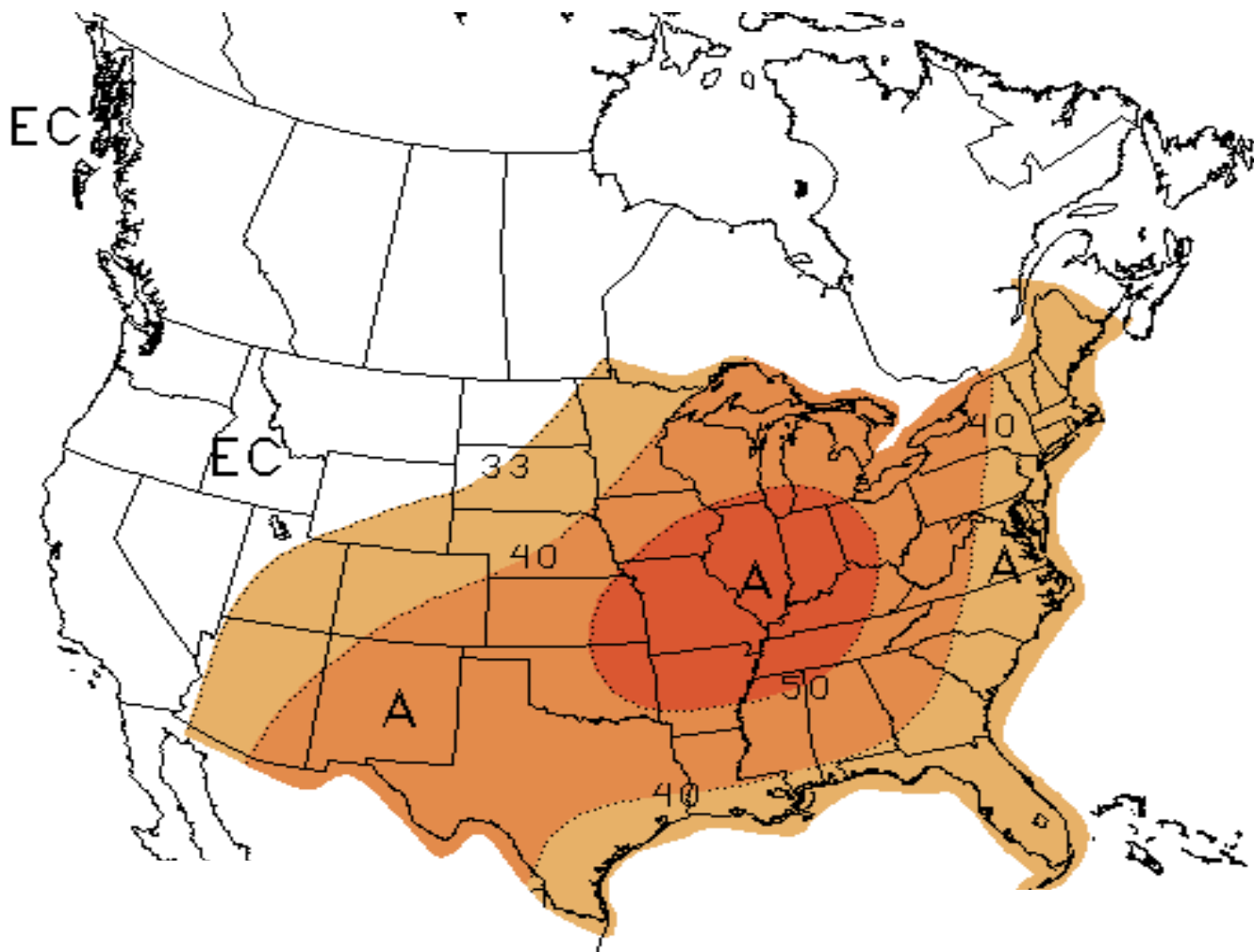
Weather

Regional Cooling Degree Days – January to July 2012



Source: Derived from NOAA data. Normal is based on a 30-year average of cooling degree day data.
 August 2012 Southeast Snapshot Report

NOAA's 3 Month Temperature Forecast Made July 19, 2012, Valid for August 2012 – October 2012



Note: "A" areas are above normal, "B" areas are below normal and "EC" means equal chance. Normal is based on the last 30 years of data.
Source: Derived from NOAA data.

Updated: August 6, 2012

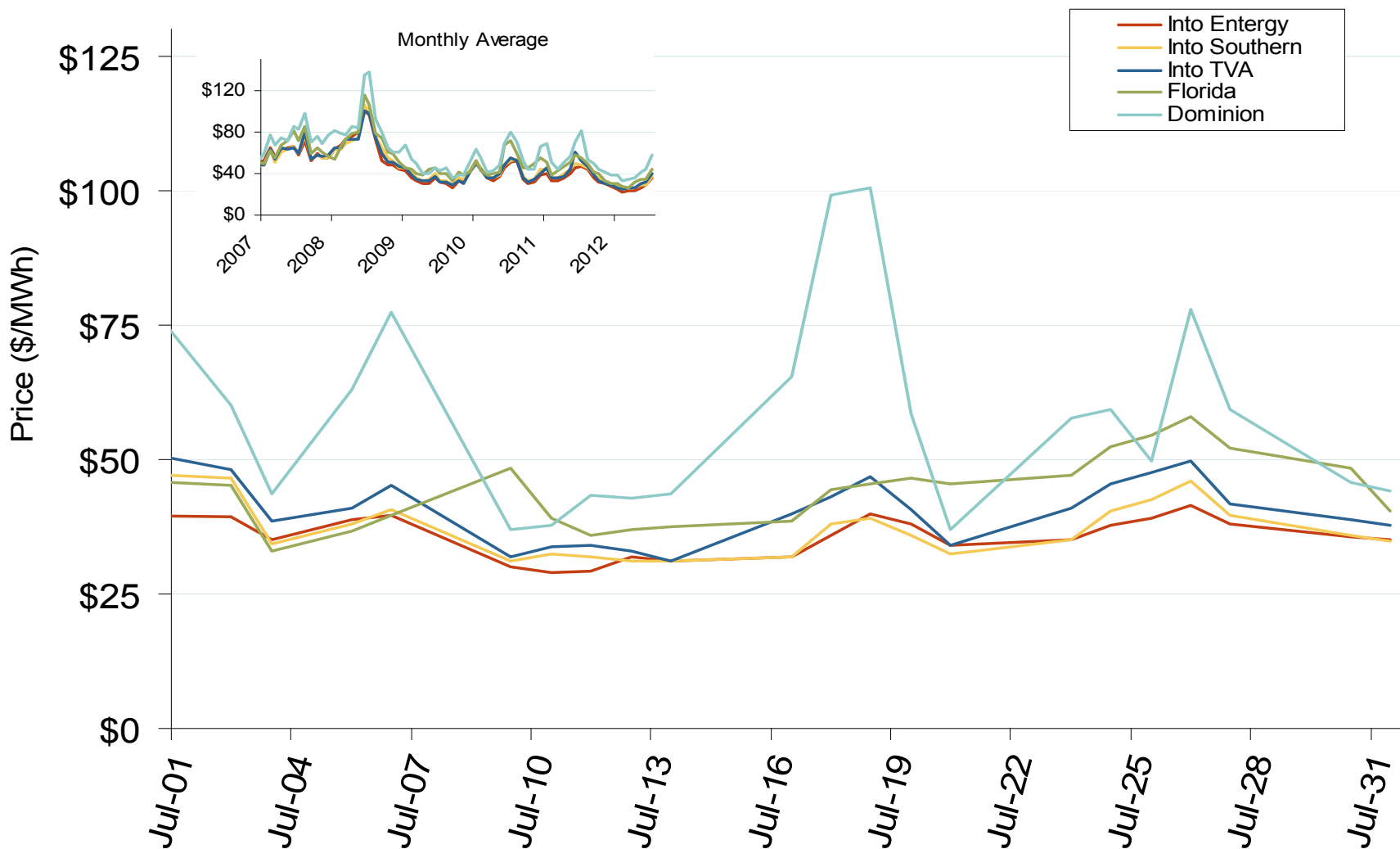


Electricity Markets

Southeast Electric Market: Last Month's Southeastern Index Prices

Federal Energy Regulatory Commission • Market Oversight • www.ferc.gov/oversight

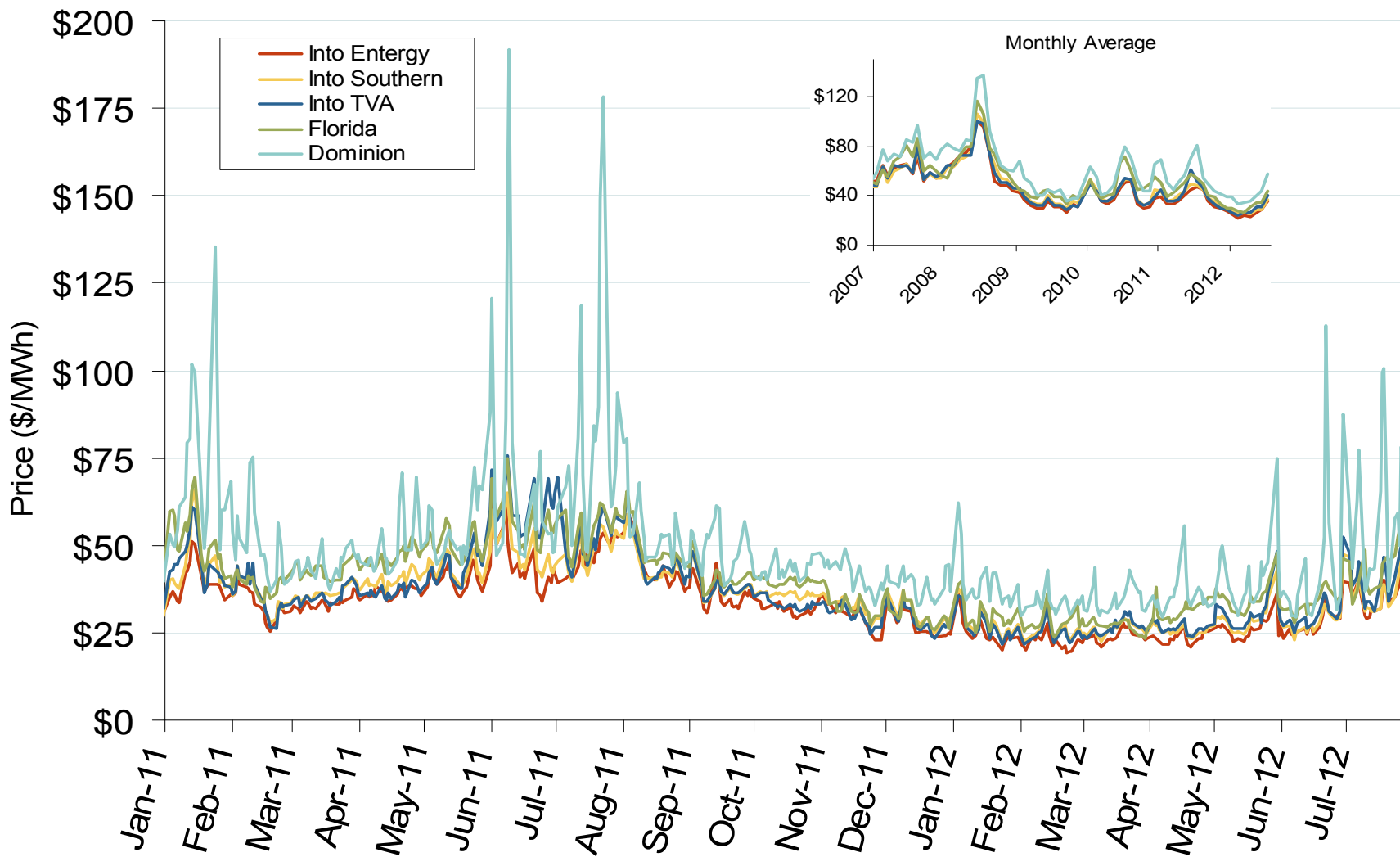
Southeastern Daily Index Day-Ahead On-Peak Prices



Southeast Electric Market: Southeastern Index Prices

Federal Energy Regulatory Commission • Market Oversight • www.ferc.gov/oversight

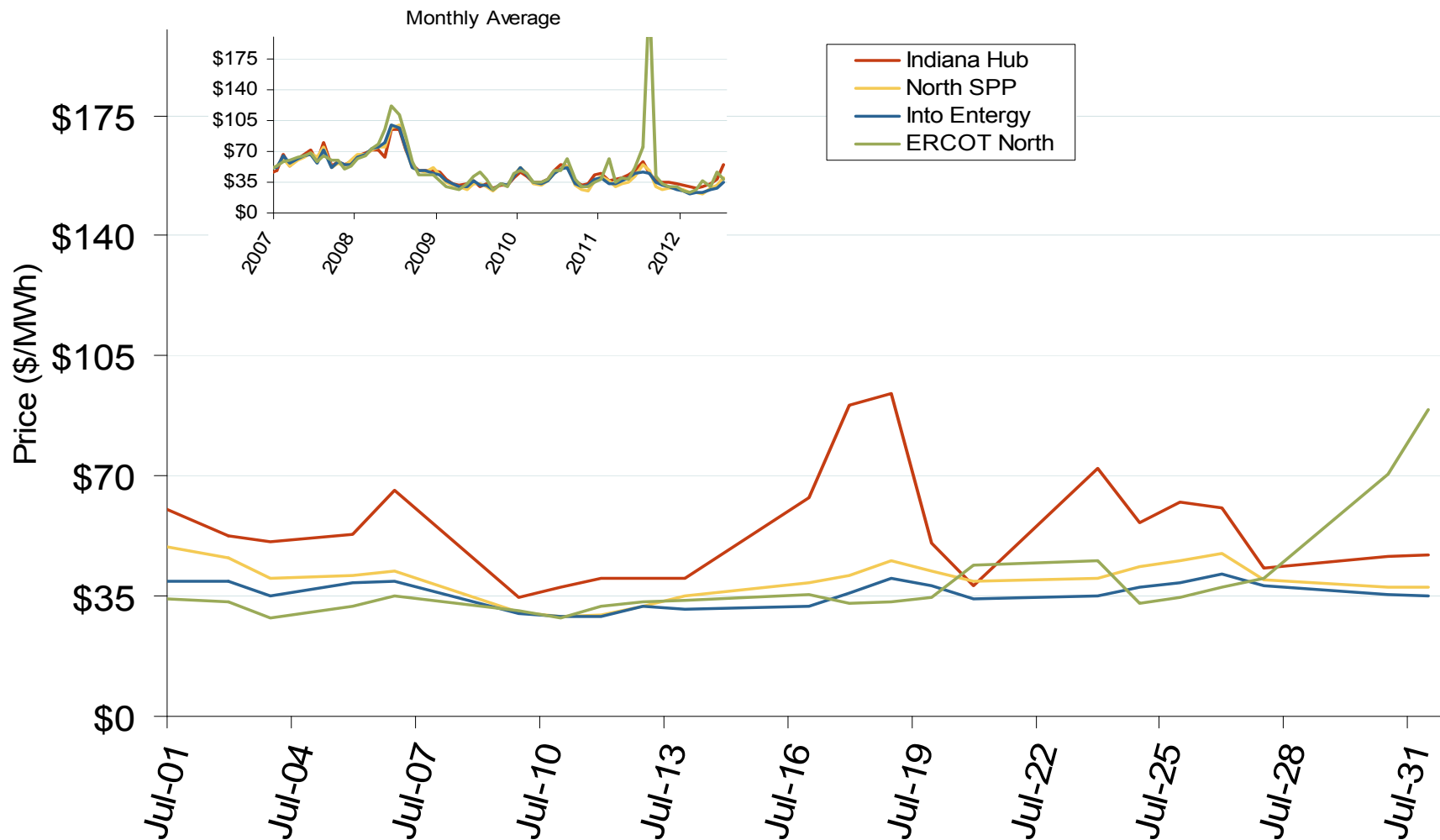
Southeastern Daily Index Day-Ahead On-Peak Prices



Southeast Electric Market: Last Month's Midwestern Index Prices

Federal Energy Regulatory Commission • Market Oversight • www.ferc.gov/oversight

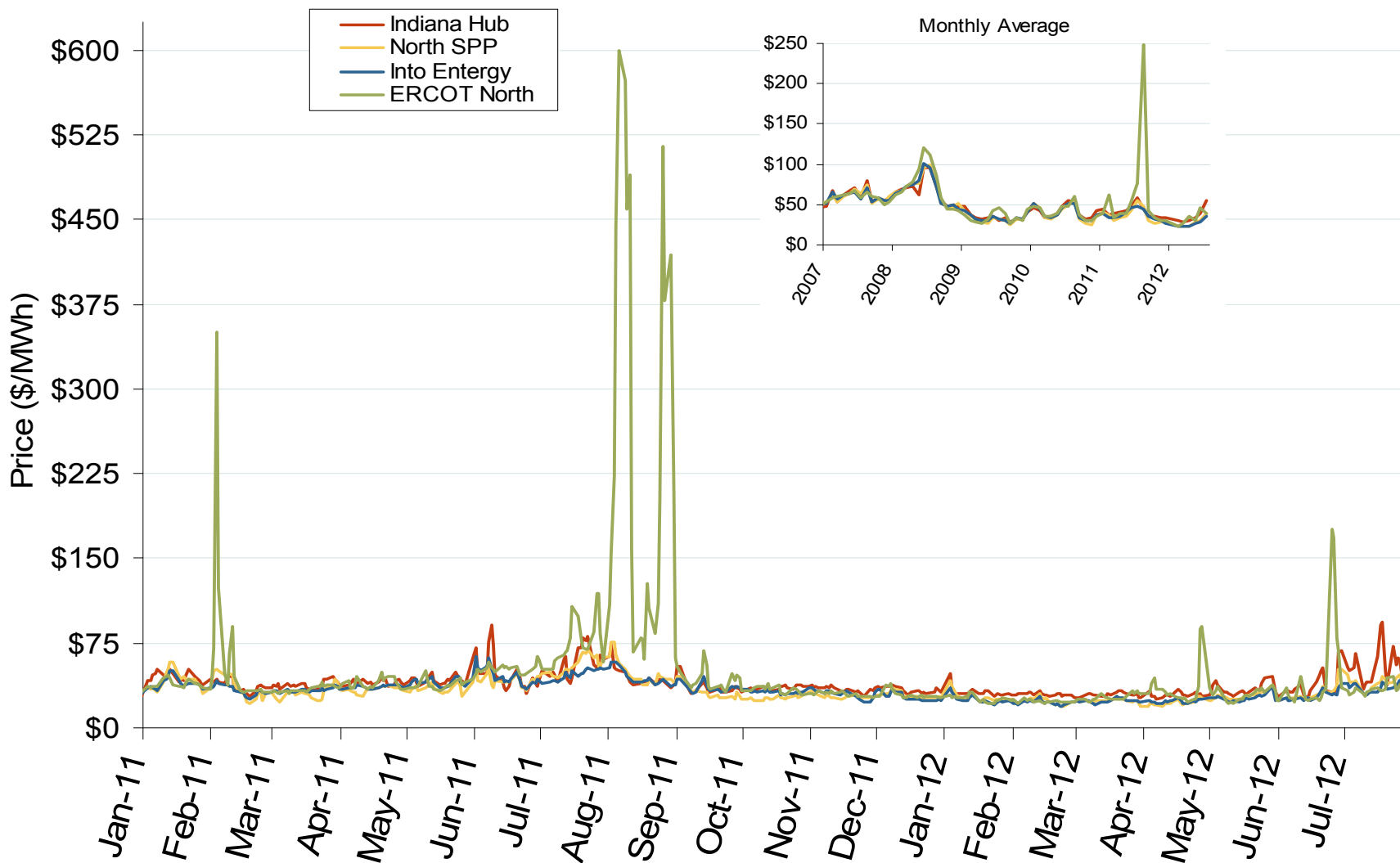
Midwestern Daily Index Day-Ahead On-Peak Prices



Southeast Electric Market: Midwestern Index Prices

Federal Energy Regulatory Commission • Market Oversight • www.ferc.gov/oversight

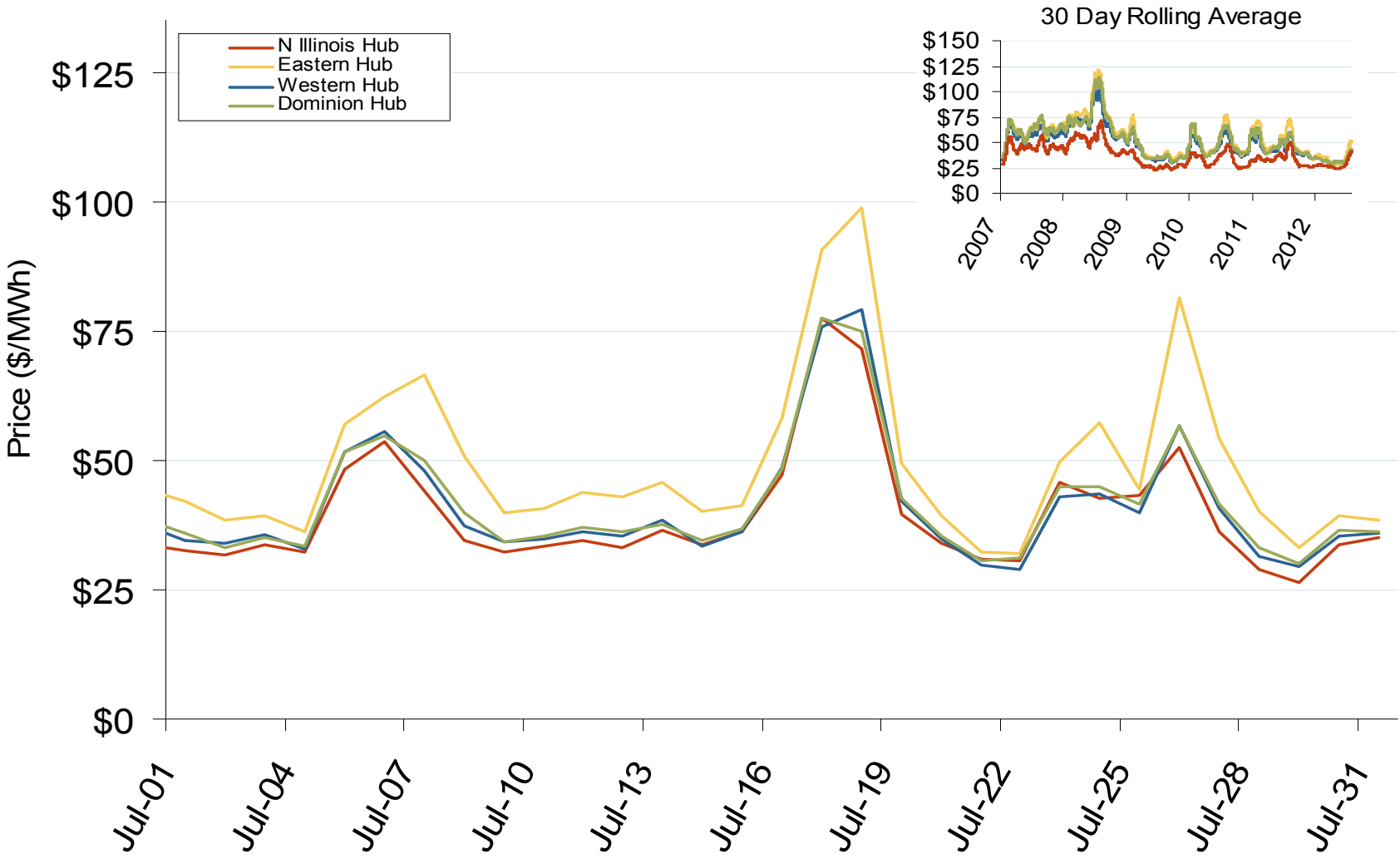
Midwestern Daily Index Day-Ahead On-Peak Prices



PJM Electric Market: Last Month's RTO Prices

Federal Energy Regulatory Commission • Market Oversight • www.ferc.gov/oversight

Daily Average of PJM Day-Ahead Prices - All Hours



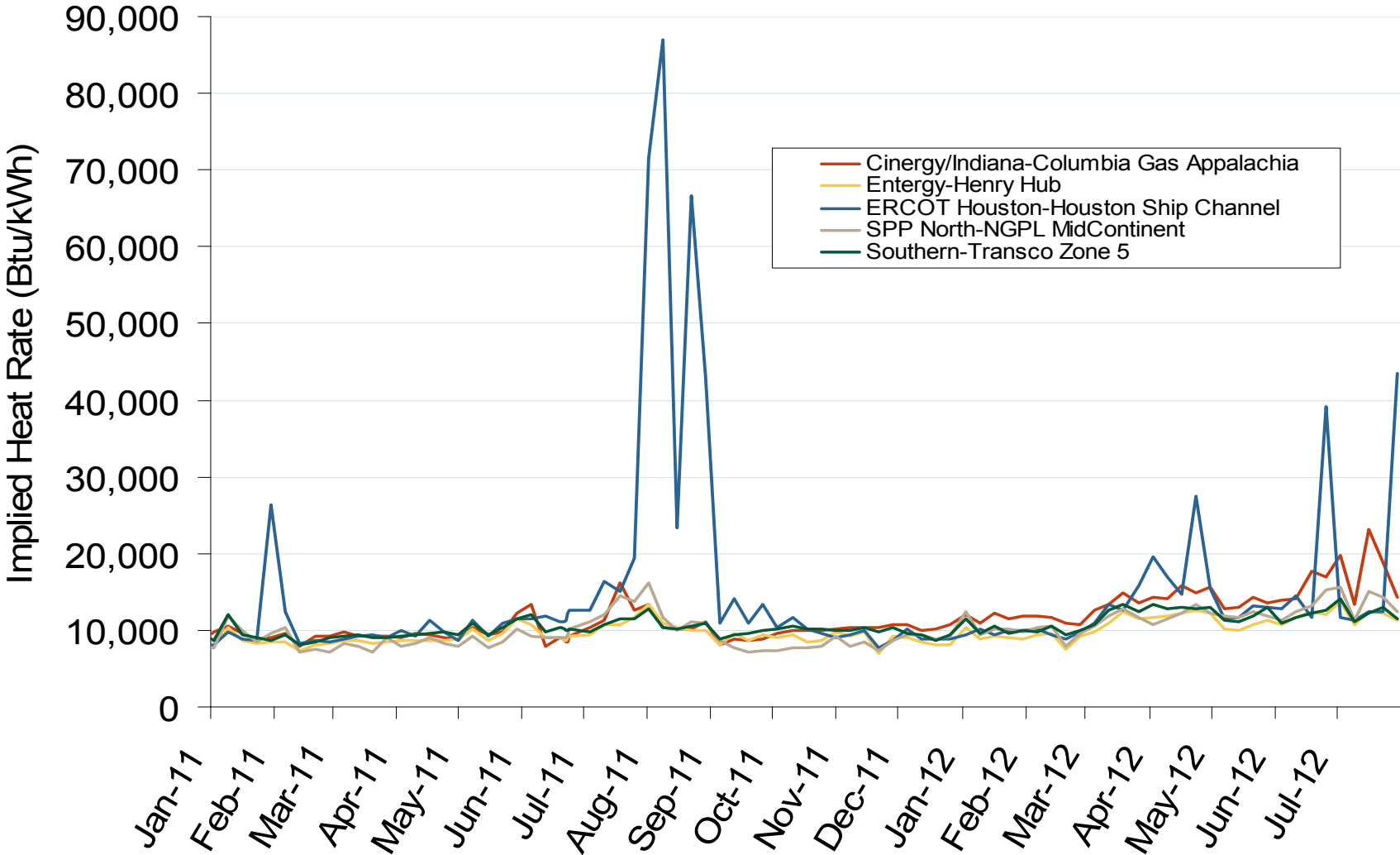
Source: Derived from Bloomberg data
August 2012 Southeast Snapshot Report

Updated: August 07, 2012

Southeast Electric Market: South Central Implied Heat Rates

Federal Energy Regulatory Commission • Market Oversight • www.ferc.gov/oversight

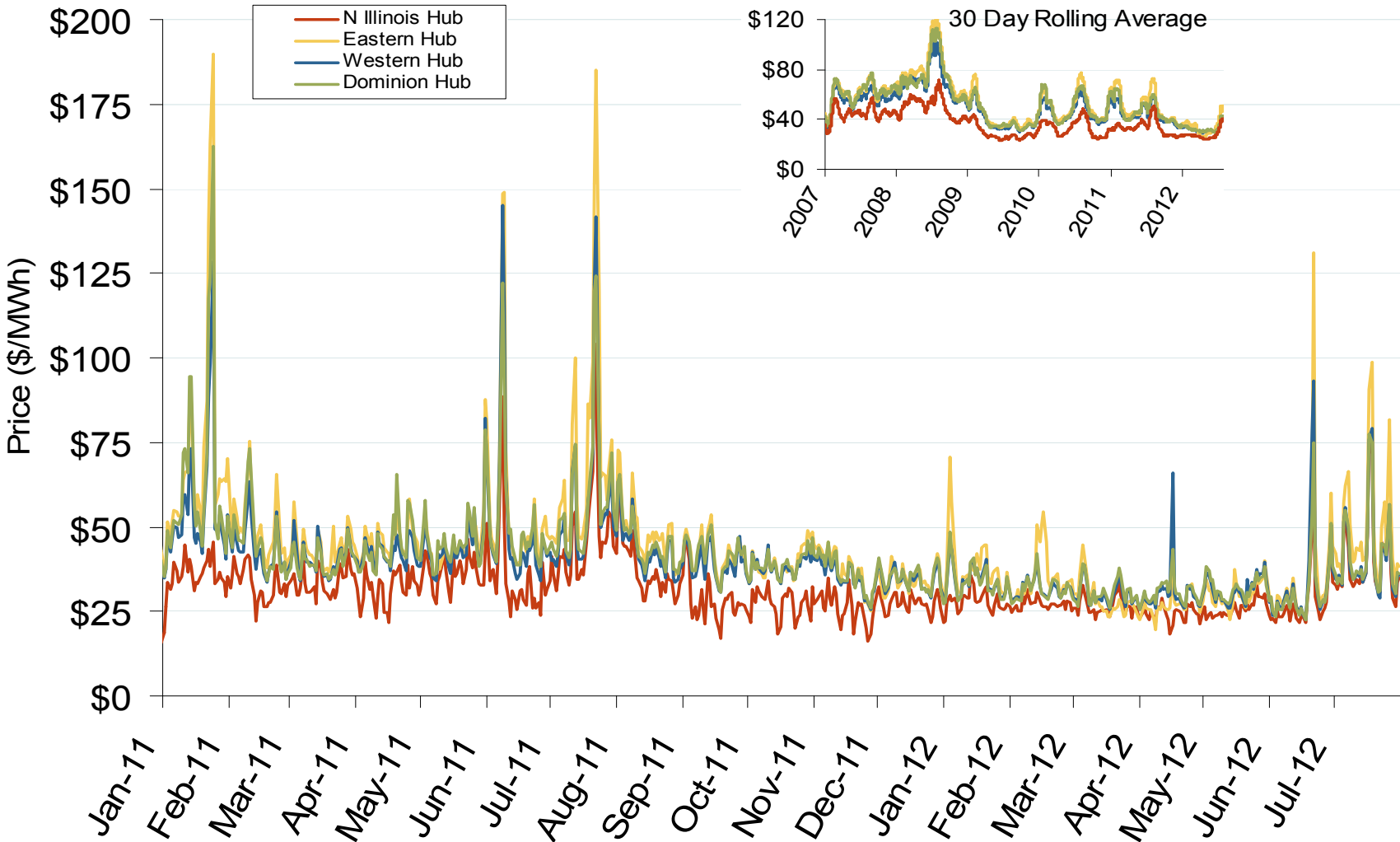
Implied Heat Rates at South Central Trading Points - Weekly Avgs.



Source: Derived from Platts on-peak electric and natural gas price data
August 2012 Southeast Snapshot Report

Updated: August 01, 2012

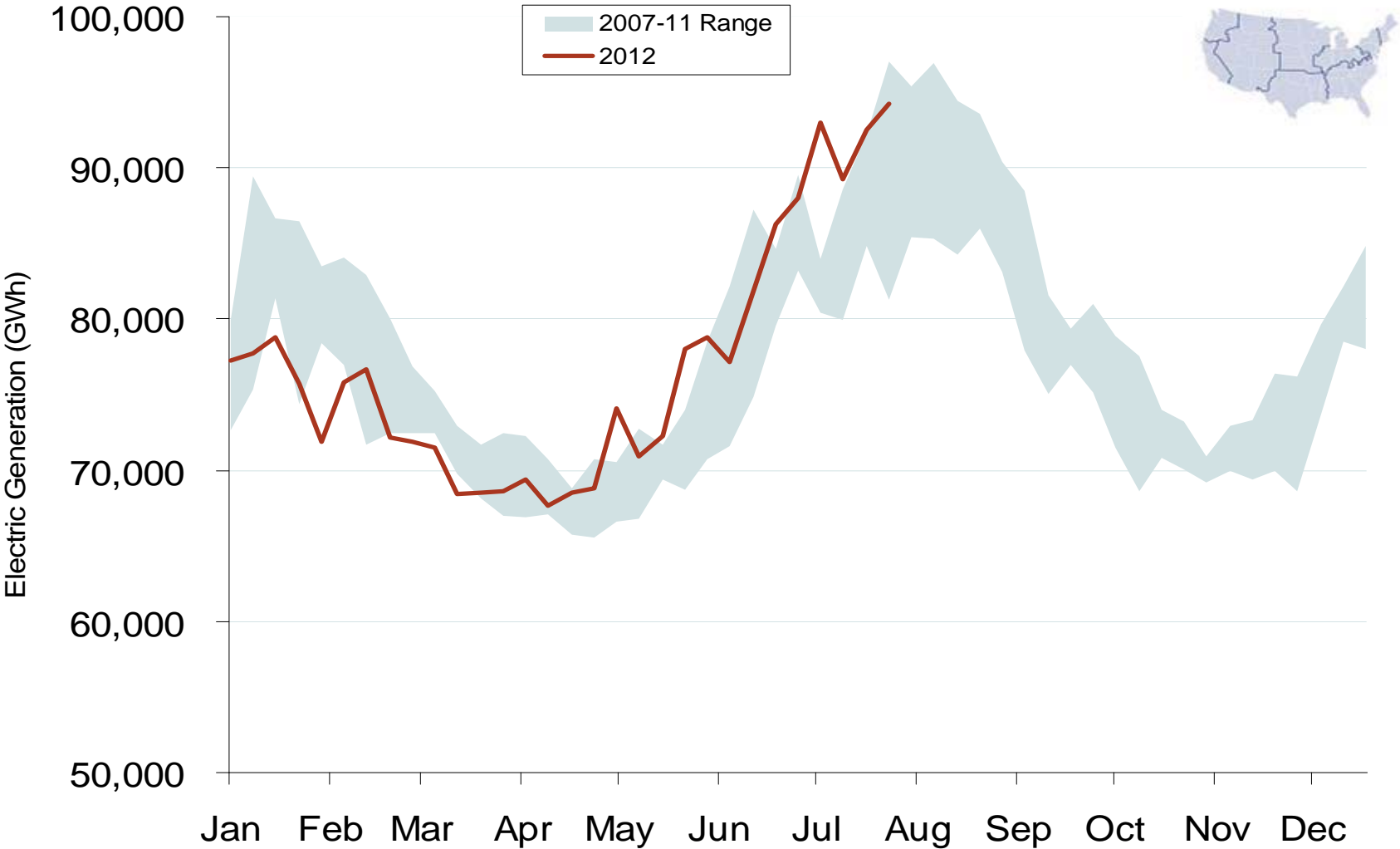
Daily Average of PJM Day-Ahead Prices - All Hours



Source: Derived from Bloomberg data
August 2012 Southeast Snapshot Report

Updated: August 07, 2012

Weekly U.S. Electric Generation Output



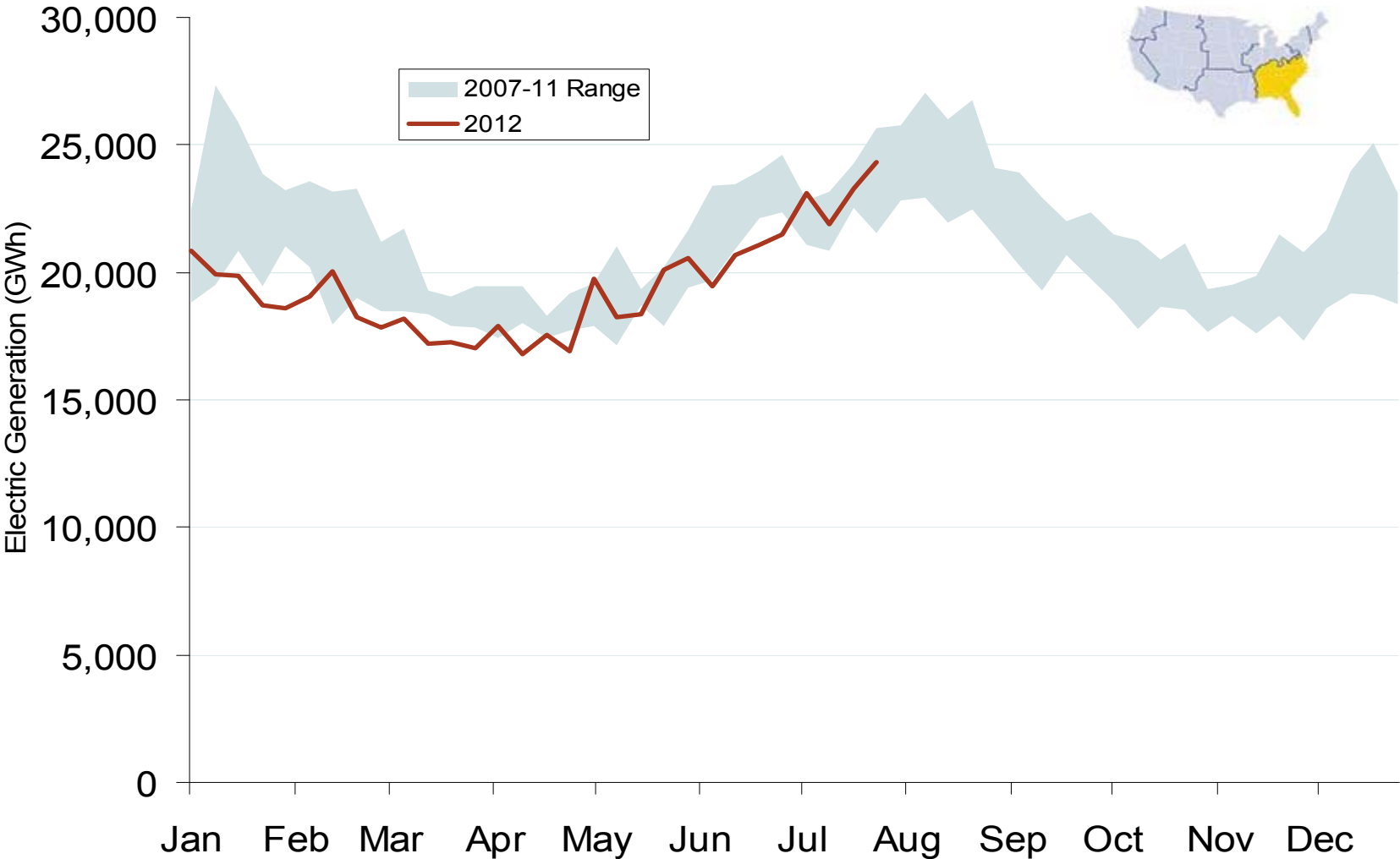
Source: Derived from *EEI* data
August 2012 Southeast Snapshot Report

Updated: August 02, 2012

Southeast Electric Market: Generation Output

Federal Energy Regulatory Commission • Market Oversight • www.ferc.gov/oversight

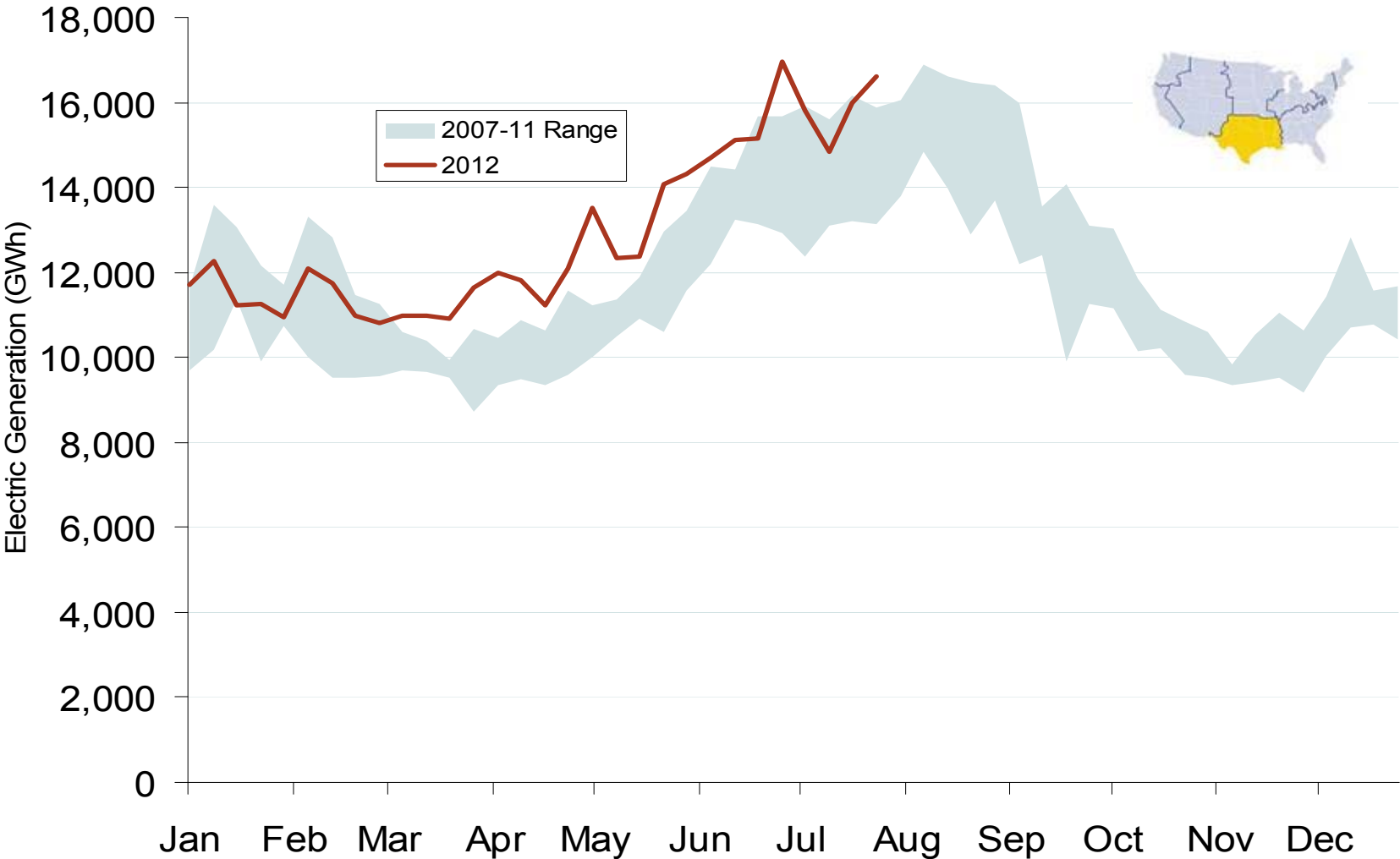
Weekly Generation Output - Southeast



Source: Derived from *EEI* data
August 2012 Southeast Snapshot Report

Updated: August 29, 2012

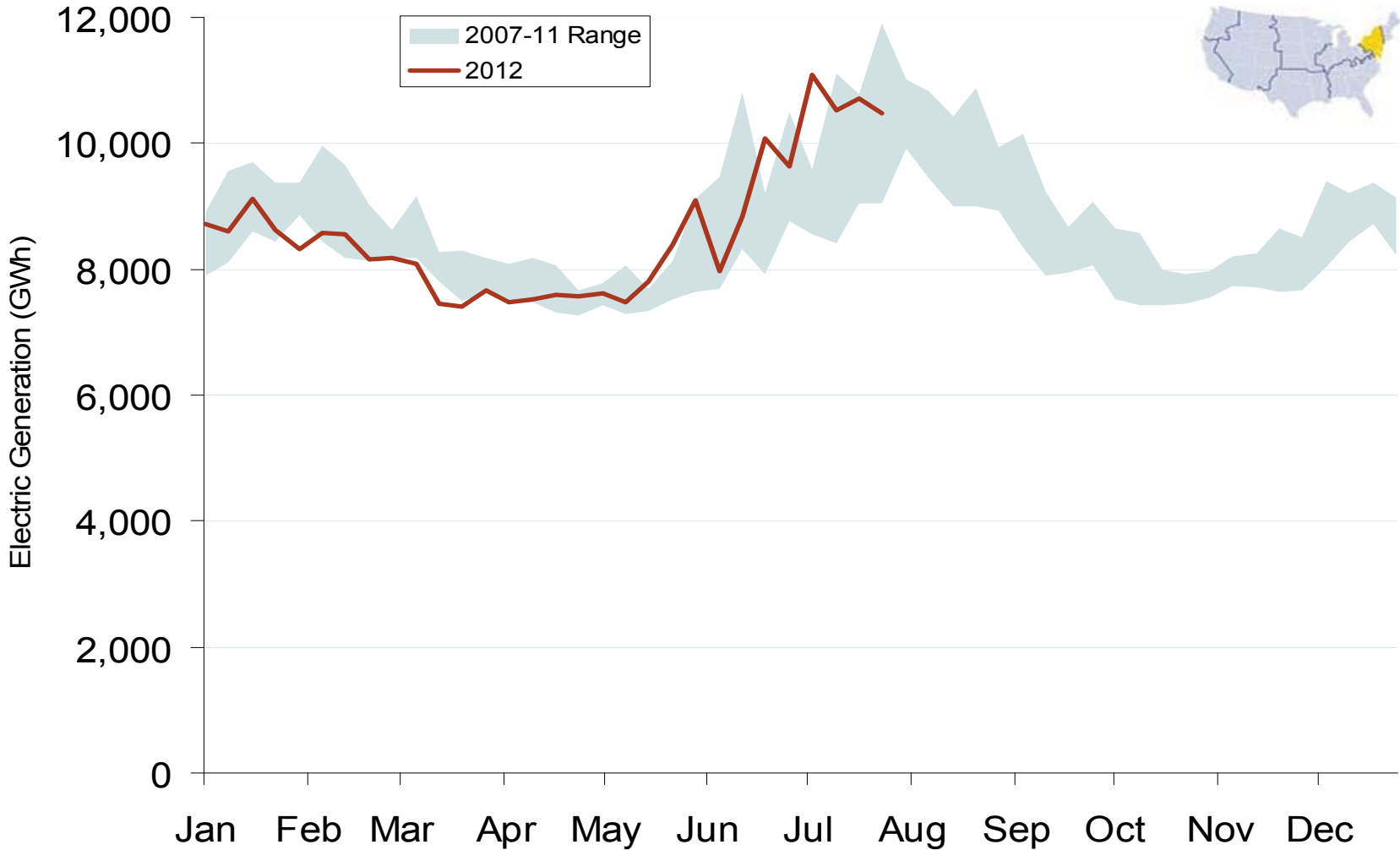
Weekly Generation Output - South Central



Source: Derived from *EEI* data
August 2012 Southeast Snapshot Report

Updated: August 29, 2012

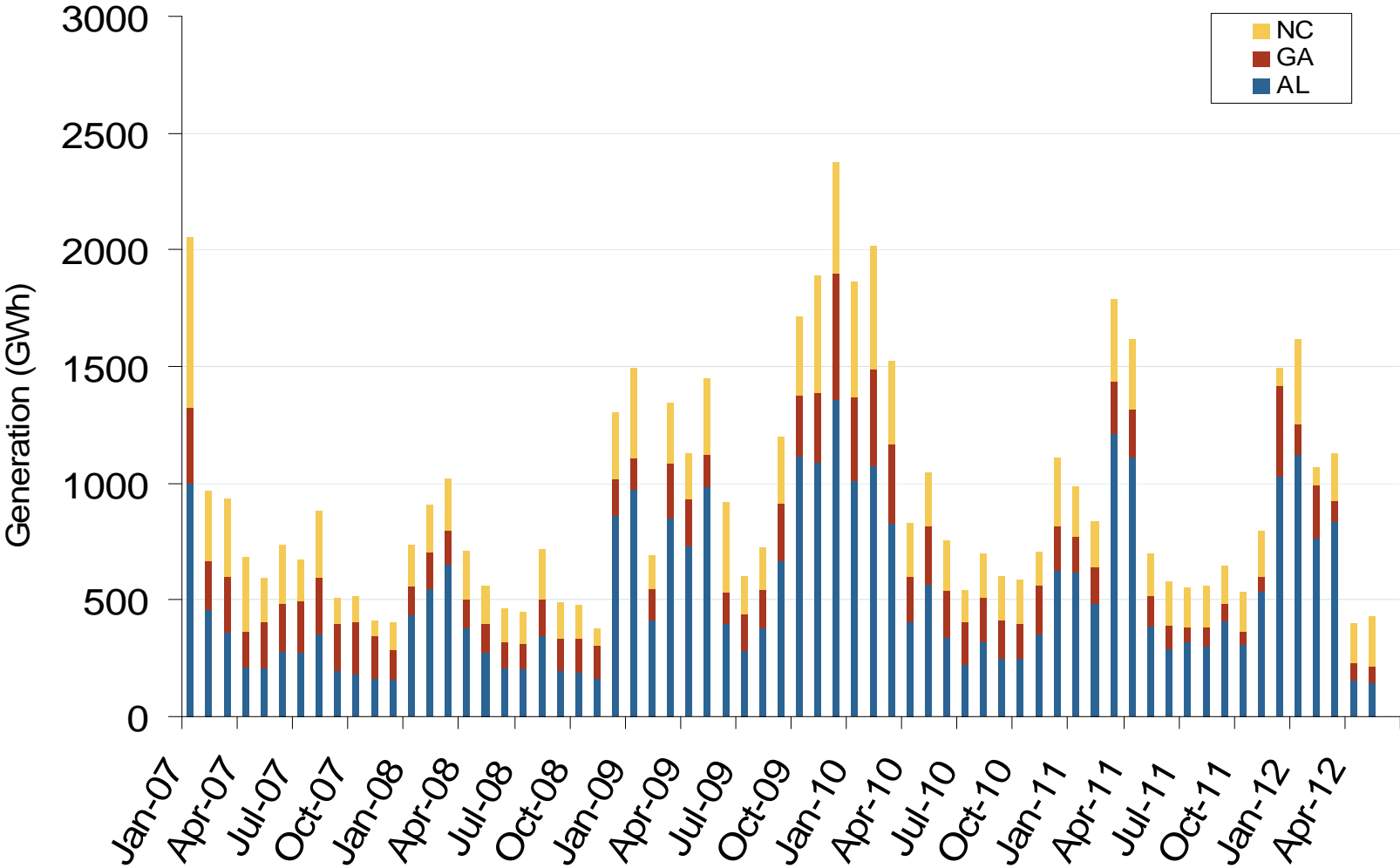
Weekly Generation Output - Mid Atlantic



Source: Derived from *EEI* data
August 2012 Southeast Snapshot Report

Updated: August 02, 2012

Monthly Southeastern Hydroelectric Generation



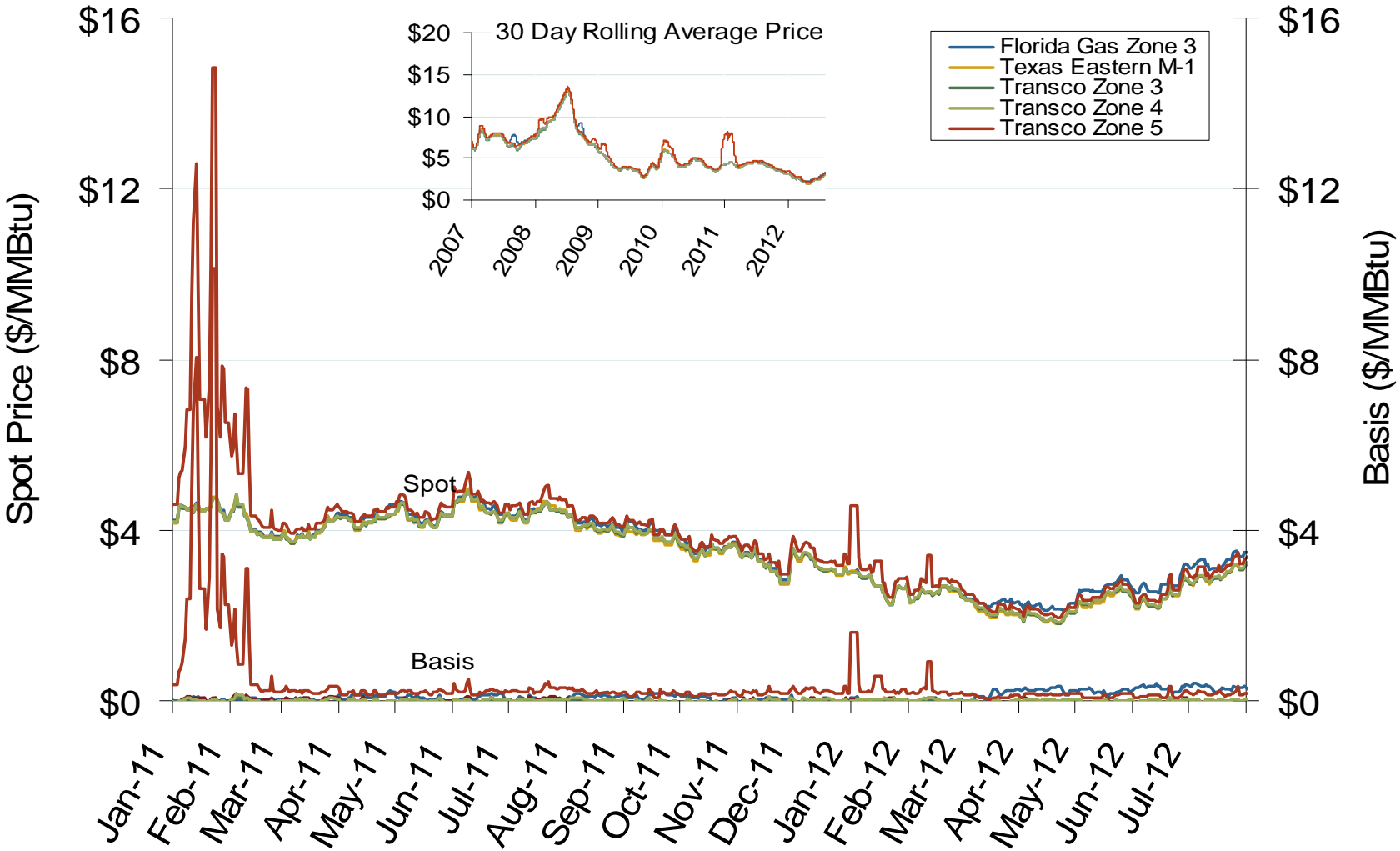
A decorative graphic consisting of several thick, parallel red lines. One set of lines is vertical, and another set is horizontal, intersecting to form a cross-like shape. The lines have a slight blur or motion effect.

Natural Gas and Fuels Markets

Southeast Natural Gas Market: Spot Prices and Basis

Federal Energy Regulatory Commission • Market Oversight • www.ferc.gov/oversight

Southeastern Day-Ahead Hub Spot Prices and Basis



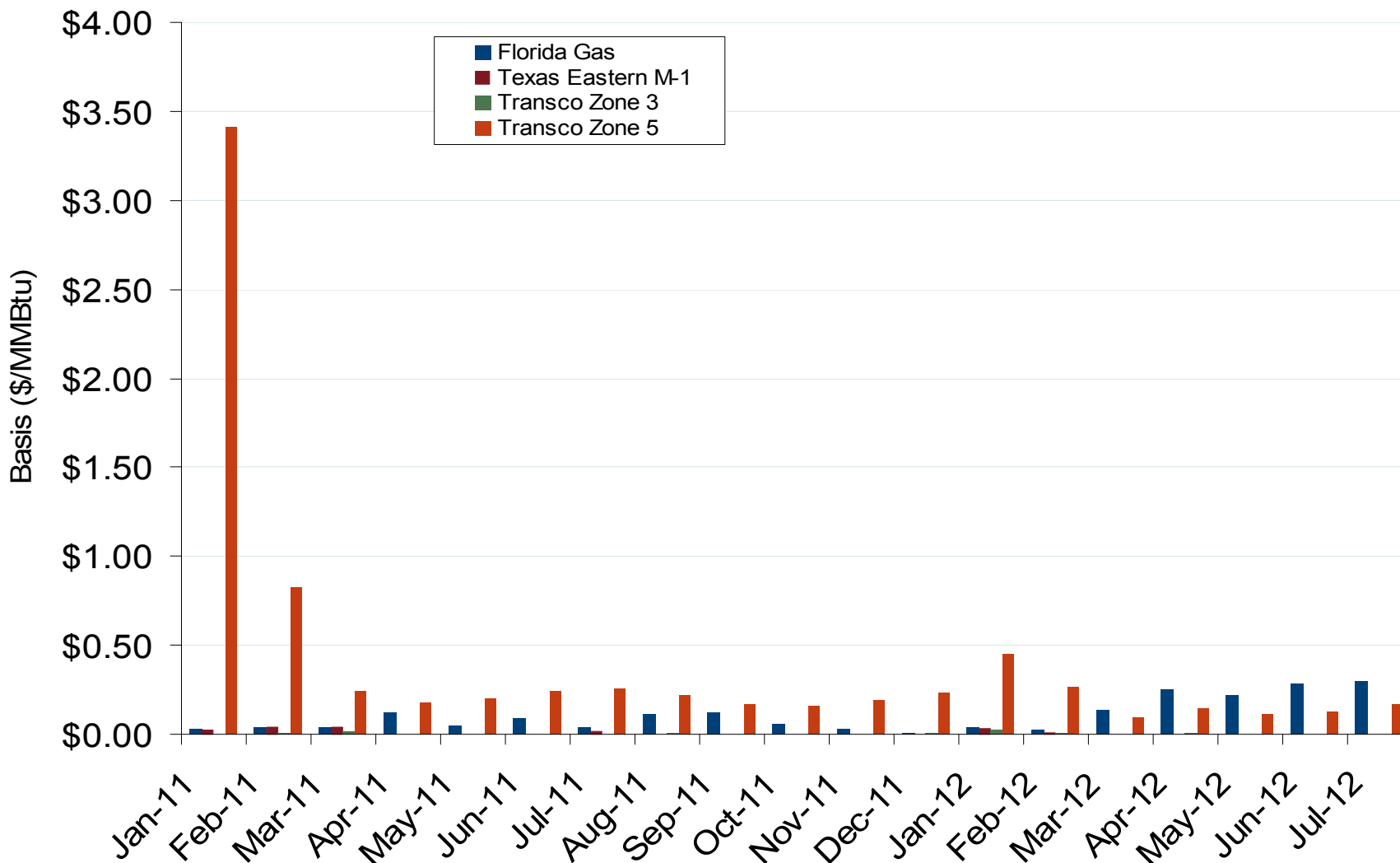
Source: Derived from Platts data
August 2012 Southeast Snapshot Report

Updated: August 01, 2012

Southeast Natural Gas Market: Average Basis to Henry Hub

Federal Energy Regulatory Commission • Market Oversight • www.ferc.gov/oversight

Southeastern Monthly Average Basis Value to Henry Hub



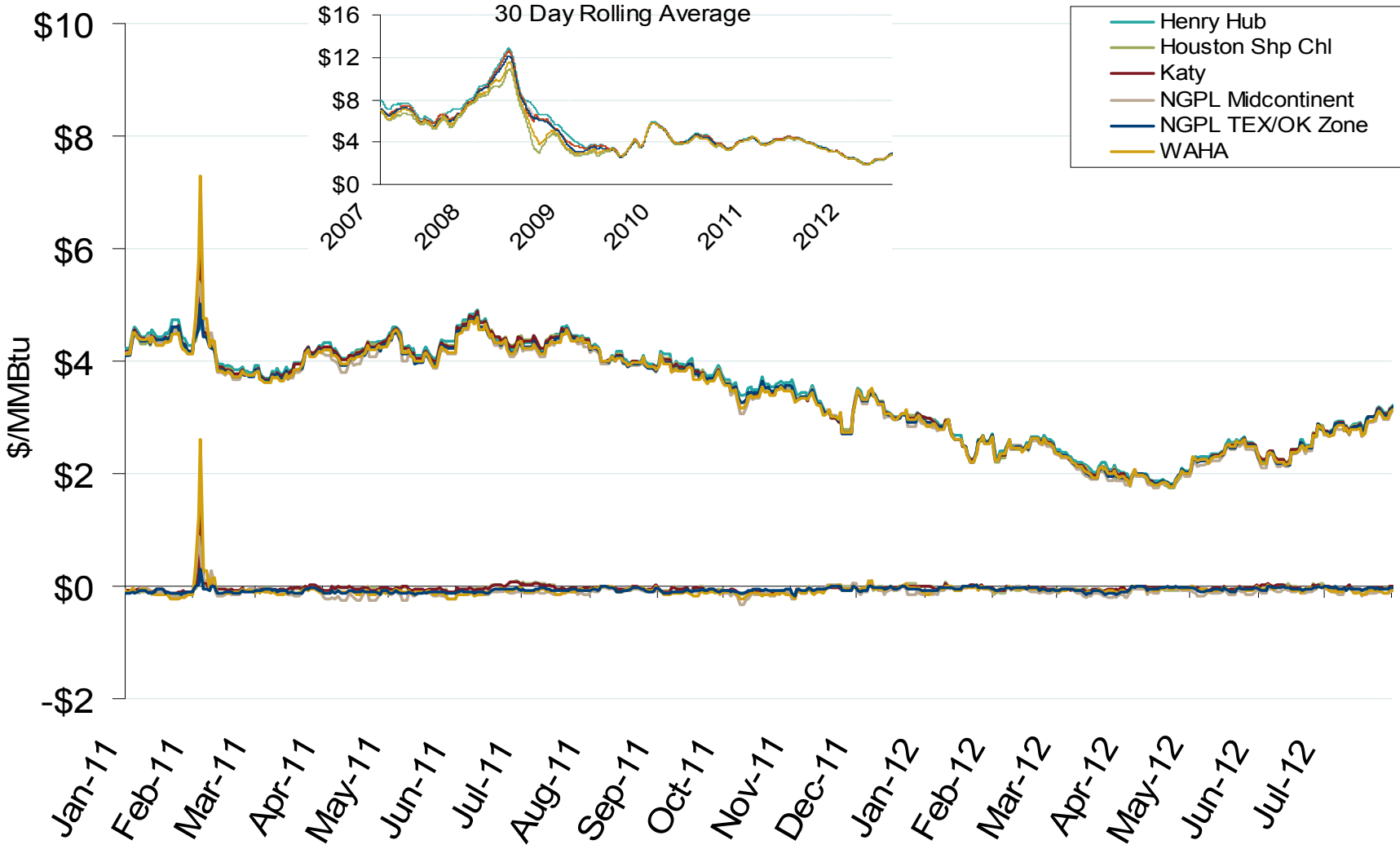
Source: Derived from *Platts* data
 August 2012 Southeast Snapshot Report

Updated: August 01, 2012

South Central Natural Gas Market: Spot Prices and Basis

Federal Energy Regulatory Commission • Market Oversight • www.ferc.gov/oversight

Gulf Day-Ahead Hub Spot Prices and Basis



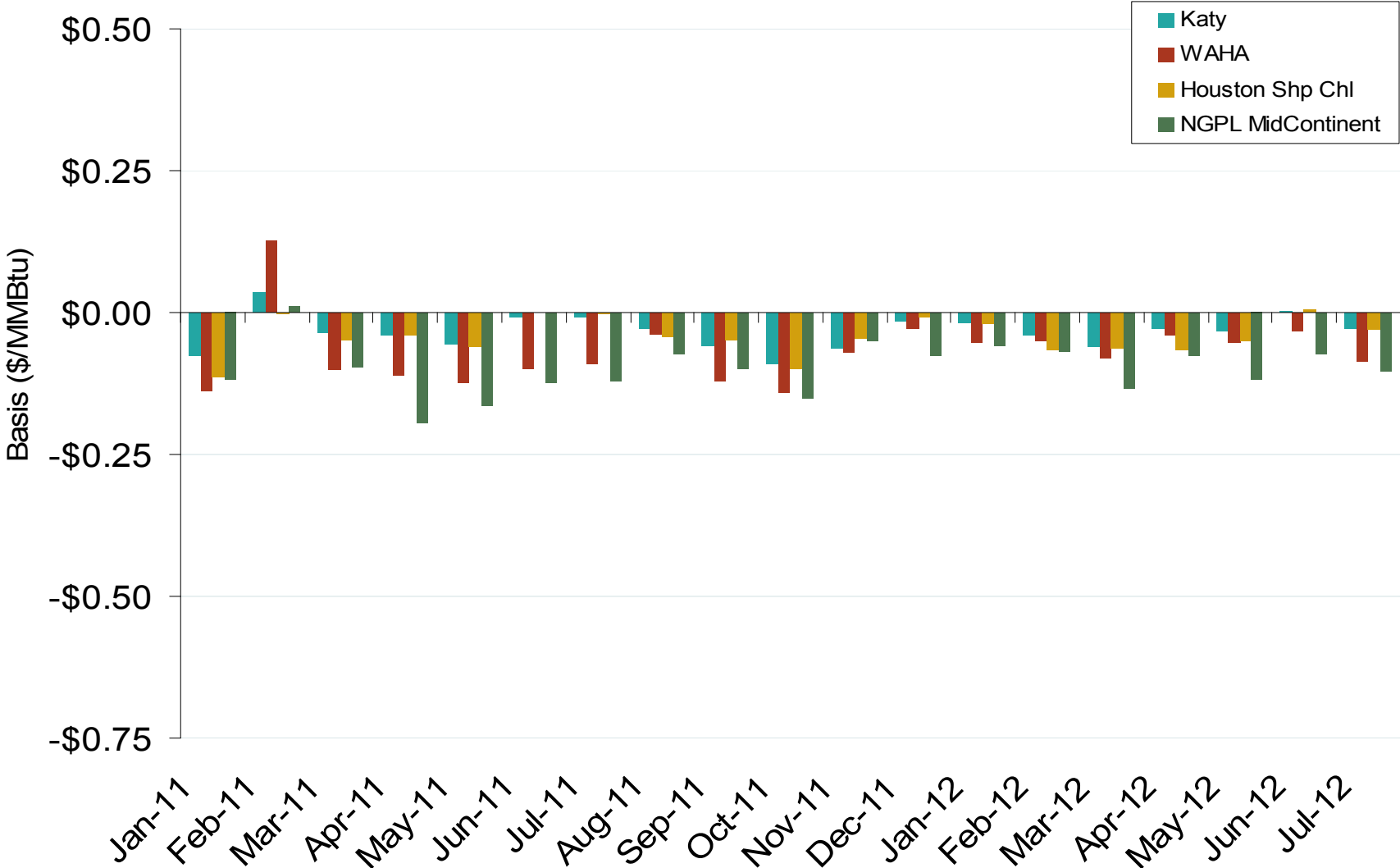
Source: Derived from Platts data
August 2012 Southeast Snapshot Report

Updated: August 01, 2012

Gulf Natural Gas Market: Average Basis to Henry Hub

Federal Energy Regulatory Commission • Market Oversight • www.ferc.gov/oversight

Gulf Monthly Average Basis Value to Henry Hub



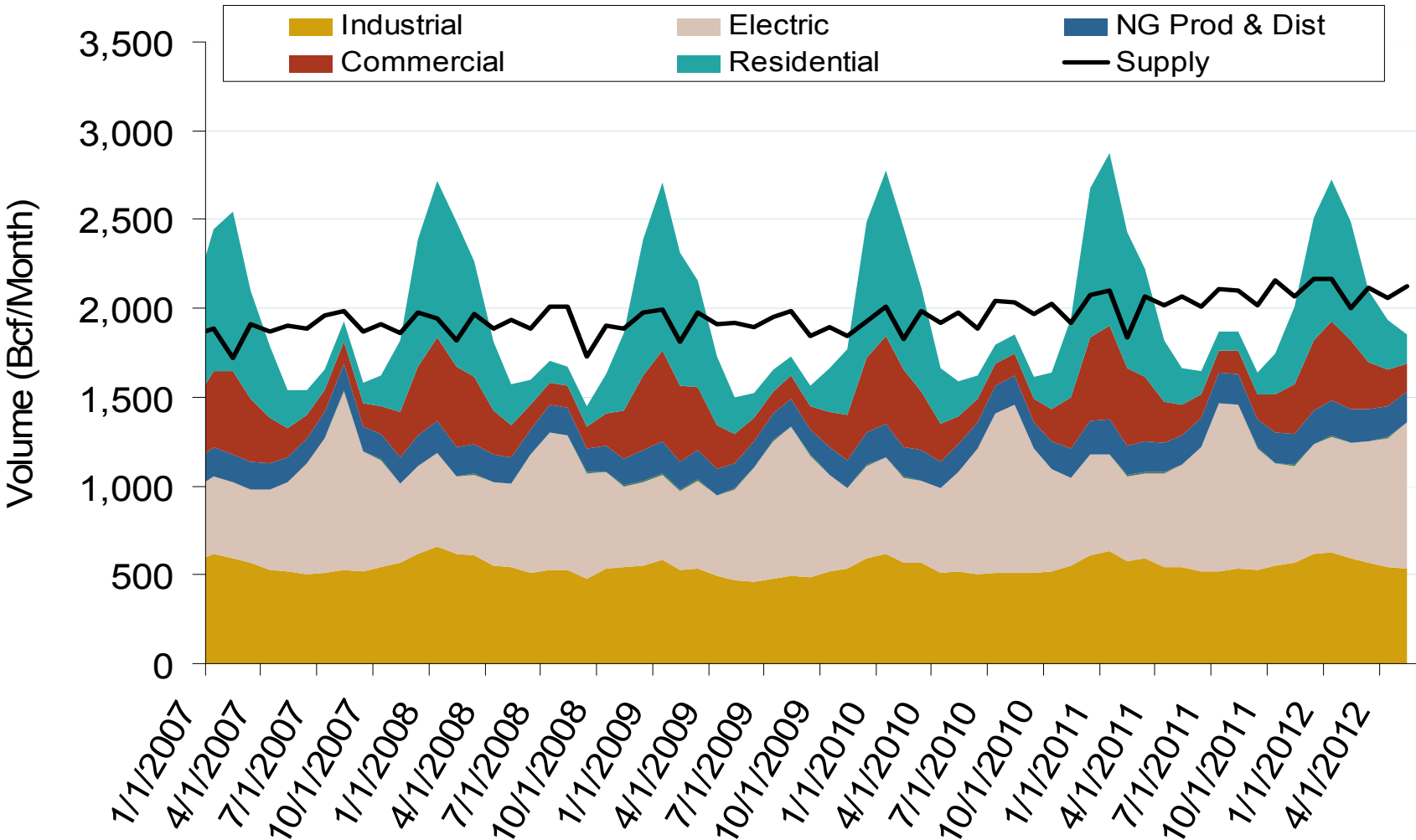
Source: Derived from Platts data
August 2012 Southeast Snapshot Report

Updated: August 01, 2012

Natural Gas market Overview: Consumption by Sector

Federal Energy Regulatory Commission • Market Oversight • www.ferc.gov/oversight

Annual U.S. Natural Gas Consumption by Sector



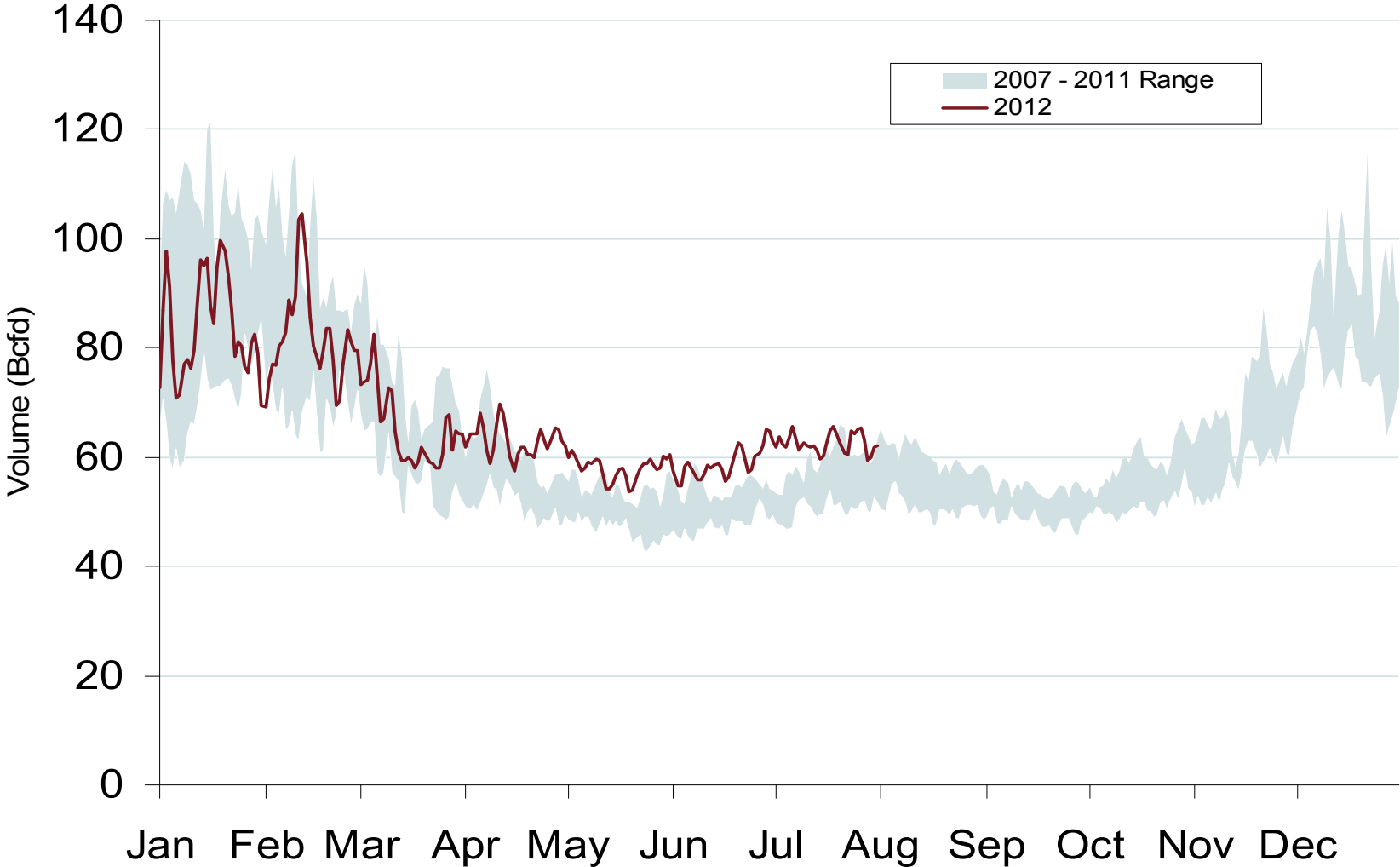
Notes: Supply includes lower 48 state production, net pipeline imports, and LNG imports

Source: Derived from EIA data

Natural Gas Market Overview: Total US Gas Demand

Federal Energy Regulatory Commission • Market Oversight • www.ferc.gov/oversight

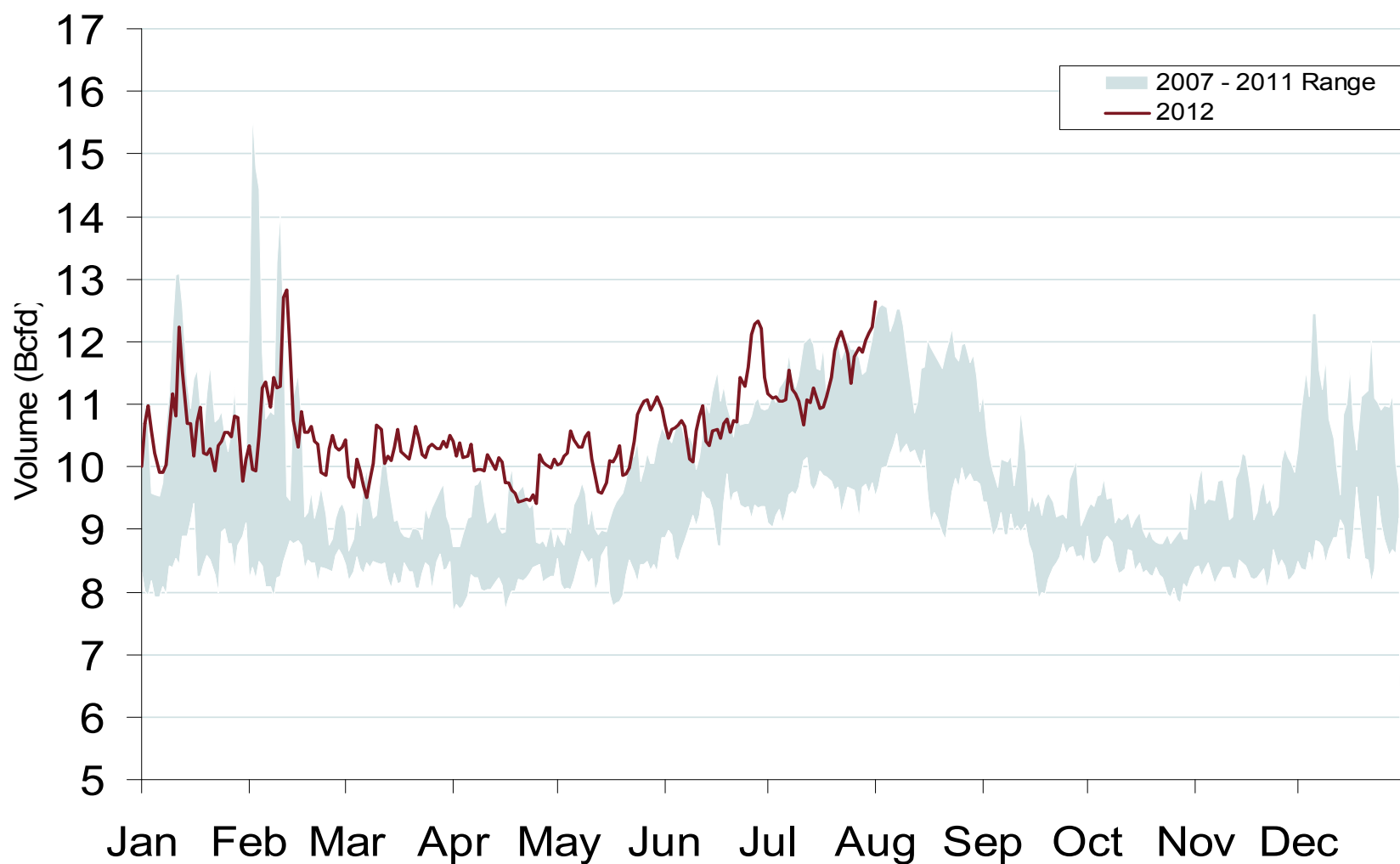
Total U.S. Natural Gas Demand All Sectors



Source: Derived from *Bentek Energy* data
August 2012 Southeast Snapshot Report

Updated: August 02, 2012

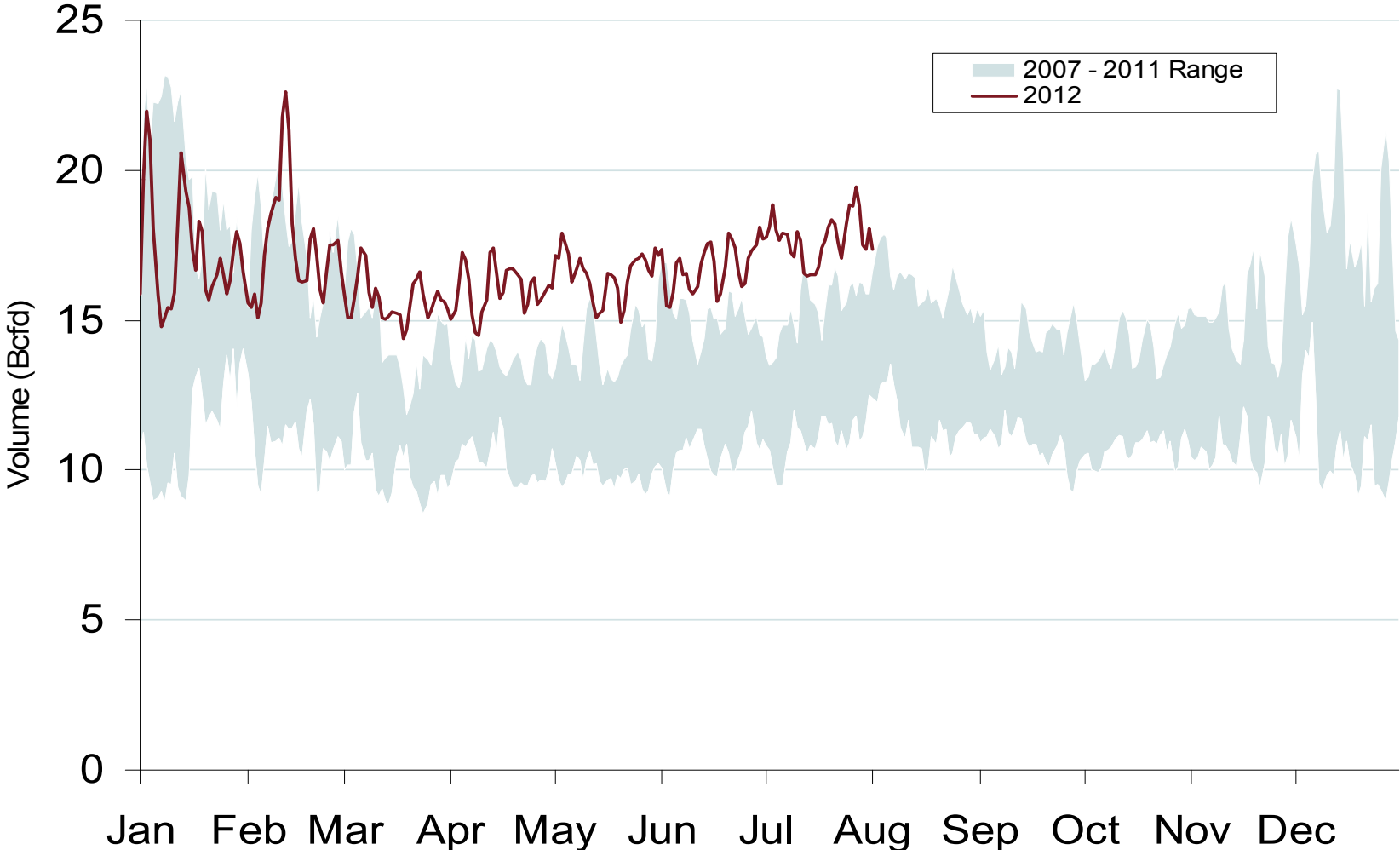
Daily Gulf Natural Gas Demand All Sectors



Southeast Natural Gas Market: Daily Demand

Federal Energy Regulatory Commission • Market Oversight • www.ferc.gov/oversight

Daily Southeast Natural Gas Demand All Sectors



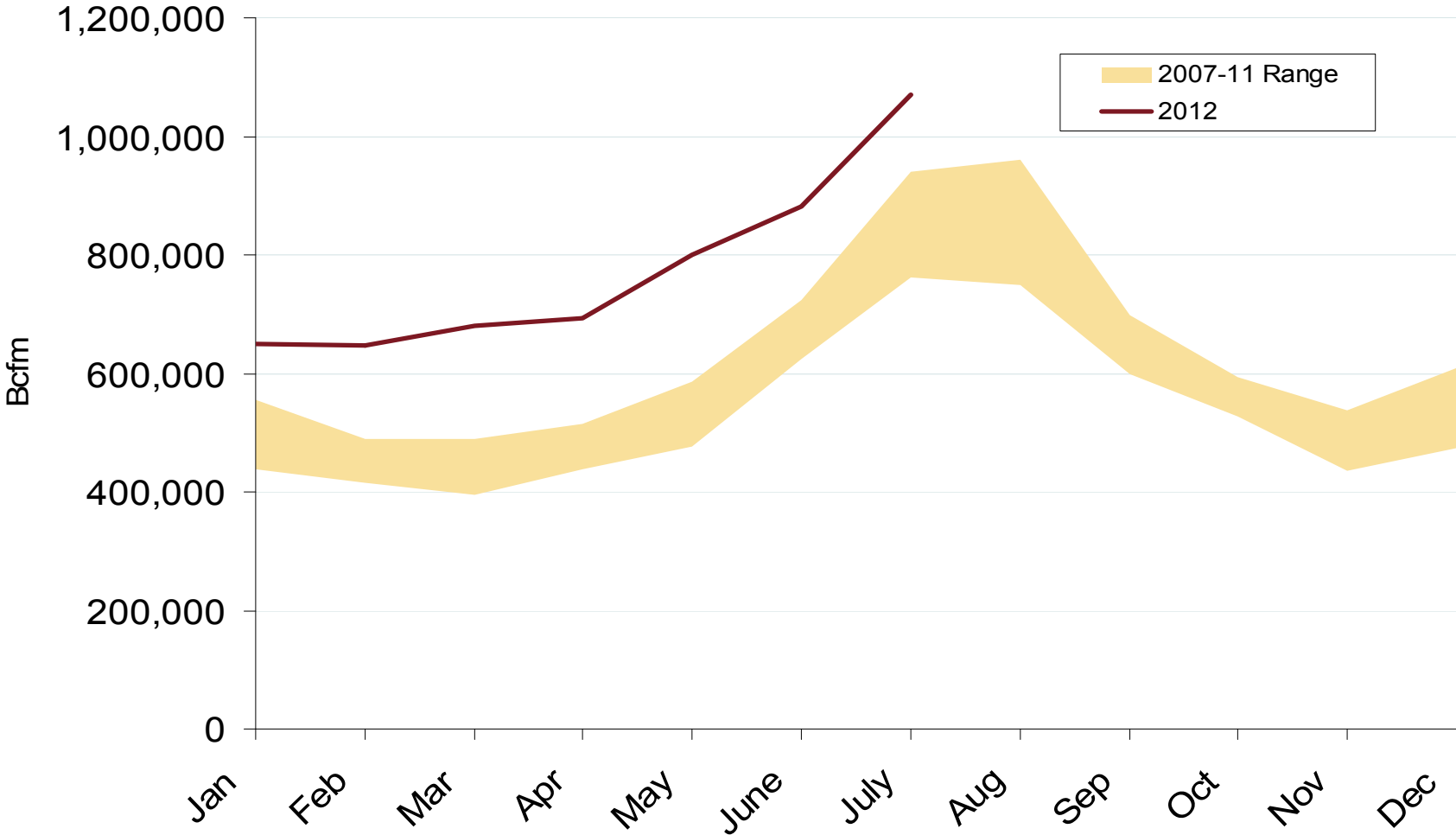
Source: Derived from *Bentek Energy* data
August 2012 Southeast Snapshot Report

Updated: August 02, 2012

Natural Gas Market Overview: NG Consumption for Power Generation

Federal Energy Regulatory Commission • Market Oversight • www.ferc.gov/oversight

U.S. Natural Gas Consumption for Power Generation



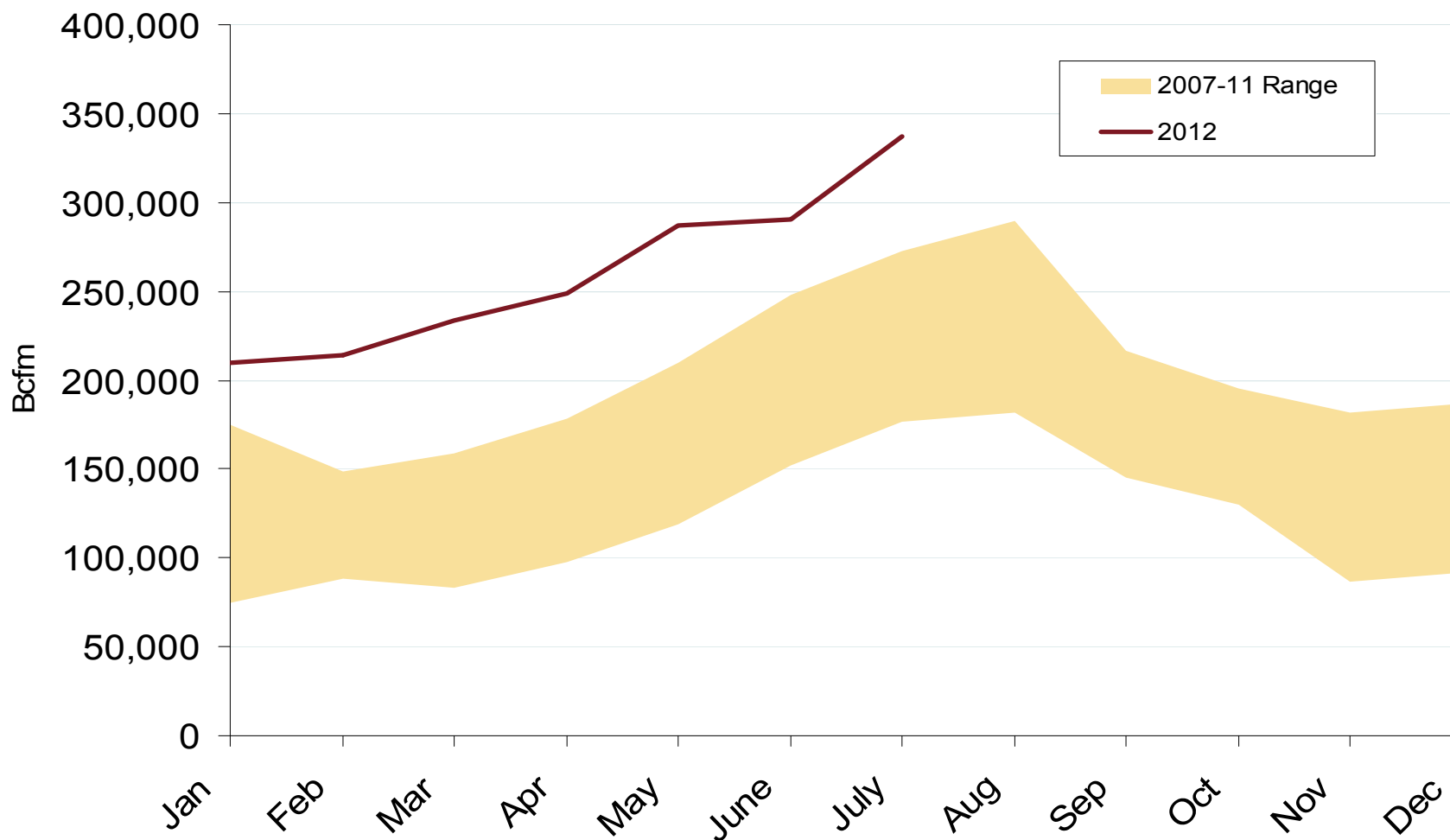
Source: Derived from *Bentek Energy* data
August 2012 Southeast Snapshot Report

Updated: August 02, 2012

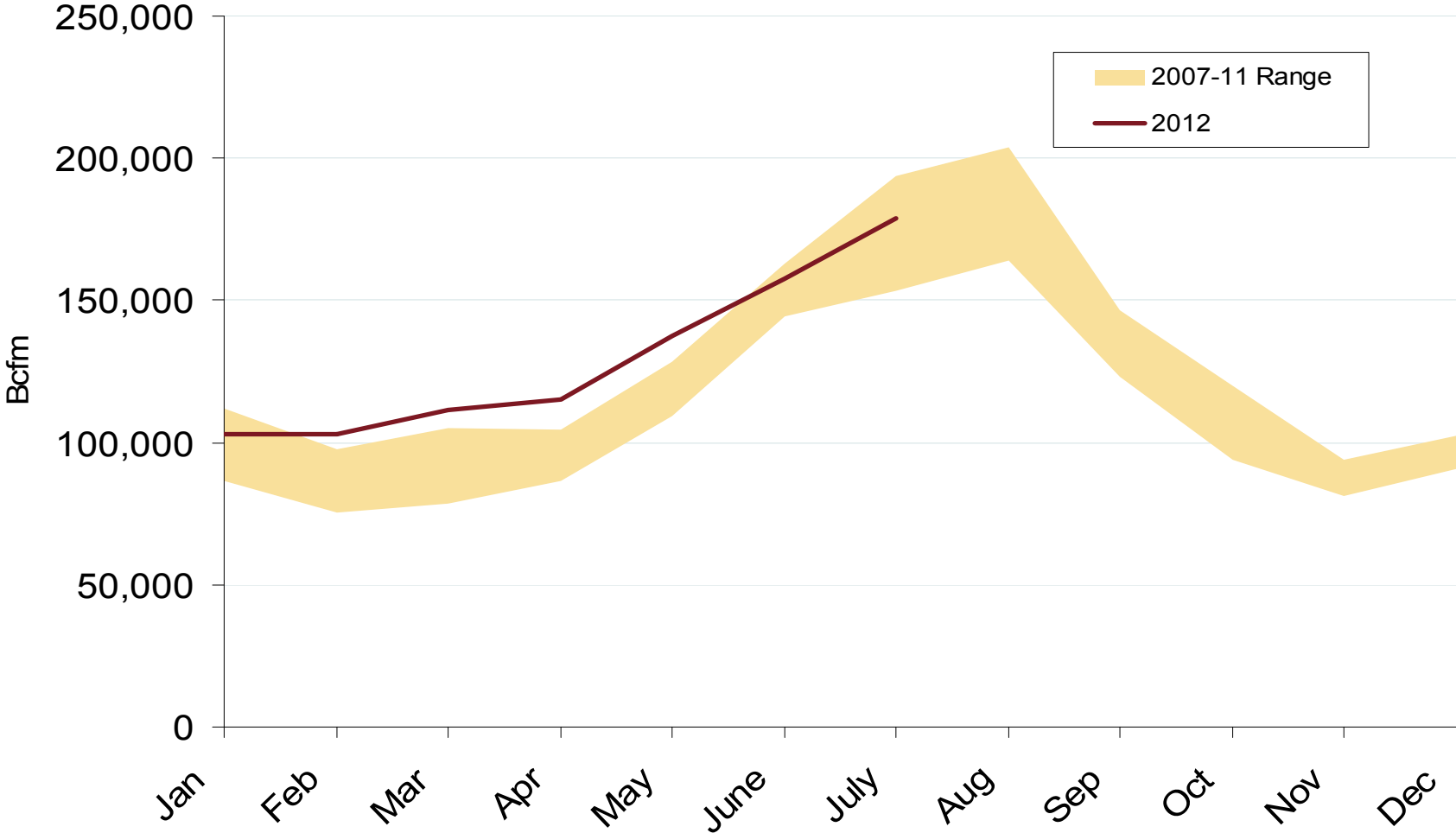
Southeast Natural Gas Market: NG Consumption for Power Generation

Federal Energy Regulatory Commission • Market Oversight • www.ferc.gov/oversight

Southeast Natural Gas Consumption for Power Generation



Gulf Natural Gas Consumption for Power Generation



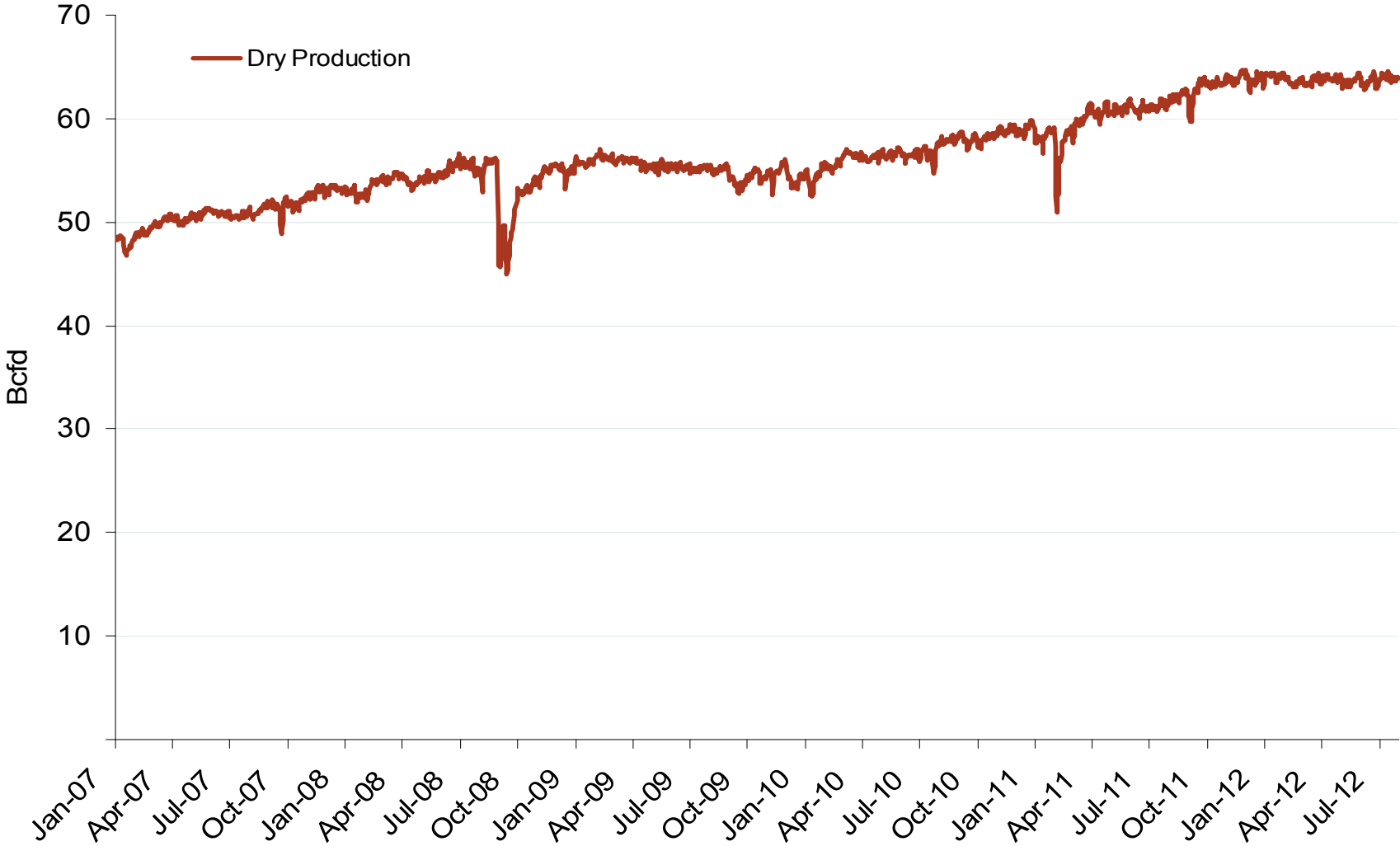
Source: Derived from *Bentek Energy* data
August 2012 Southeast Snapshot Report

Updated: August 02, 2012

Natural Gas Markets: Monthly U.S. Dry Gas Production

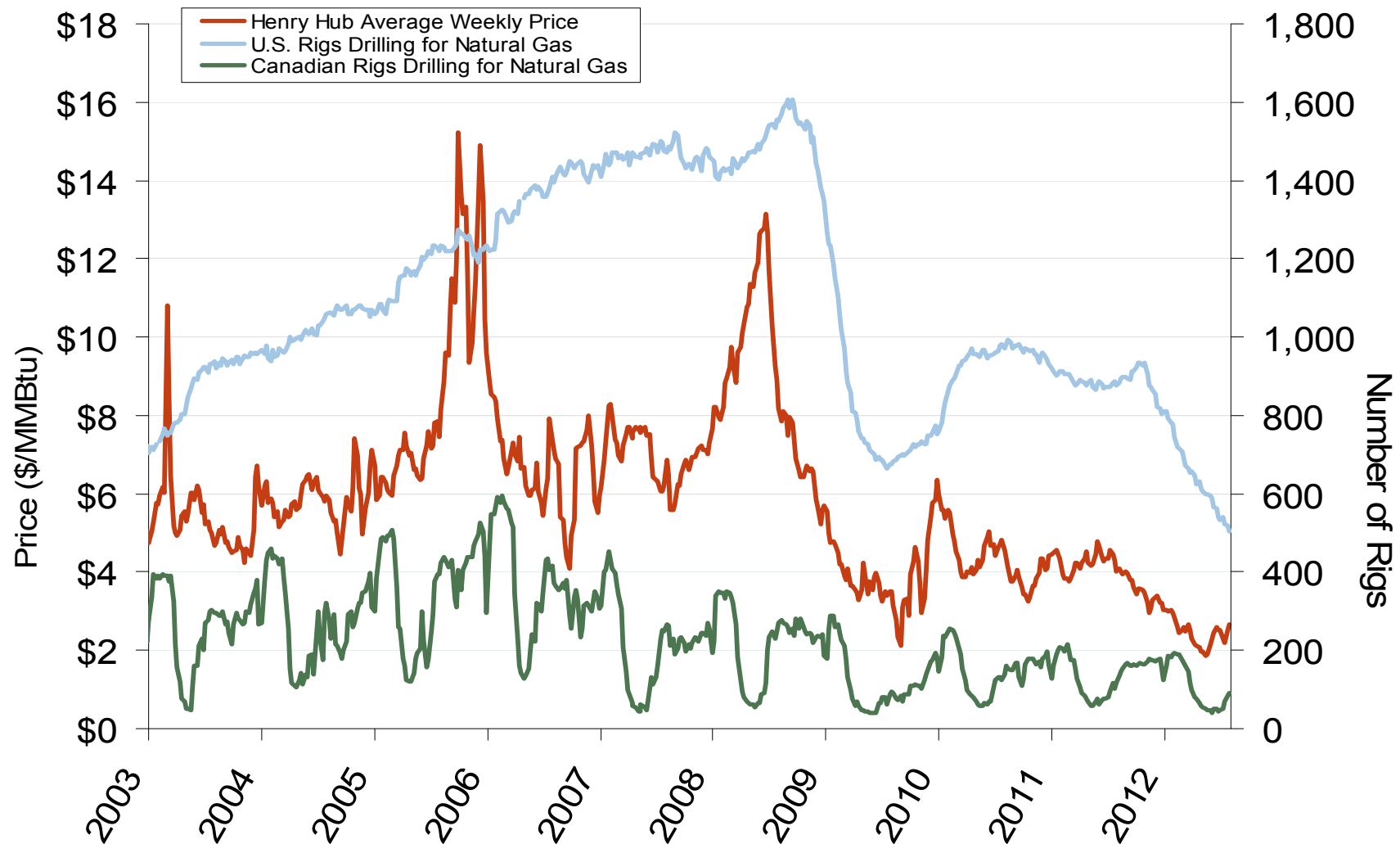
Federal Energy Regulatory Commission • Market Oversight • www.ferc.gov/oversight

Monthly U.S. Dry Gas Production – Lower 48 States

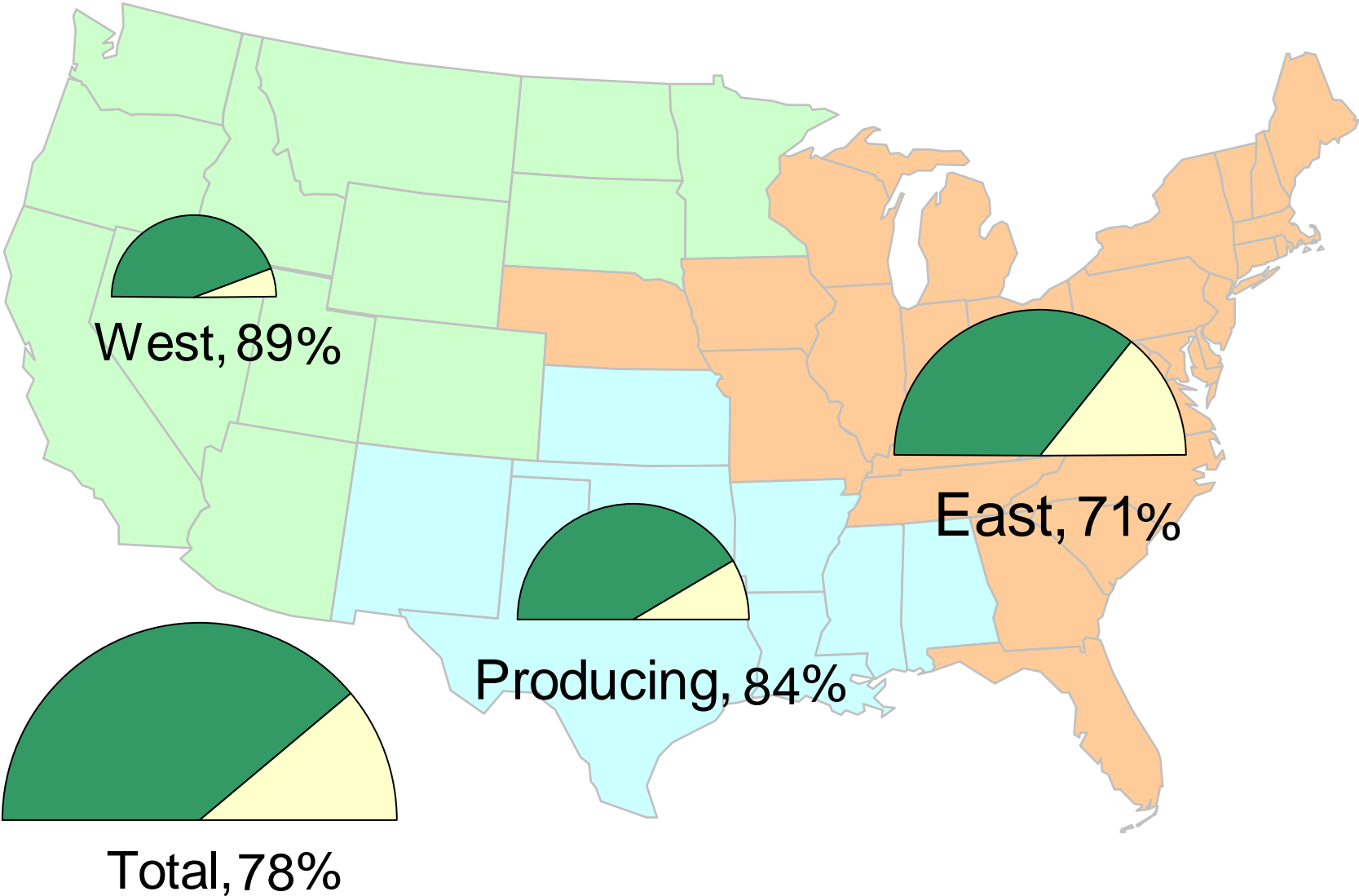


Note: Prior to July 2010, chart was derived from a combination of *EIA* and *Bentek Energy* data
Source: Derived from *Bentek Energy* data
August 2012 Southeast Snapshot Report

Natural Gas Market Overview: Drilling Rig Count

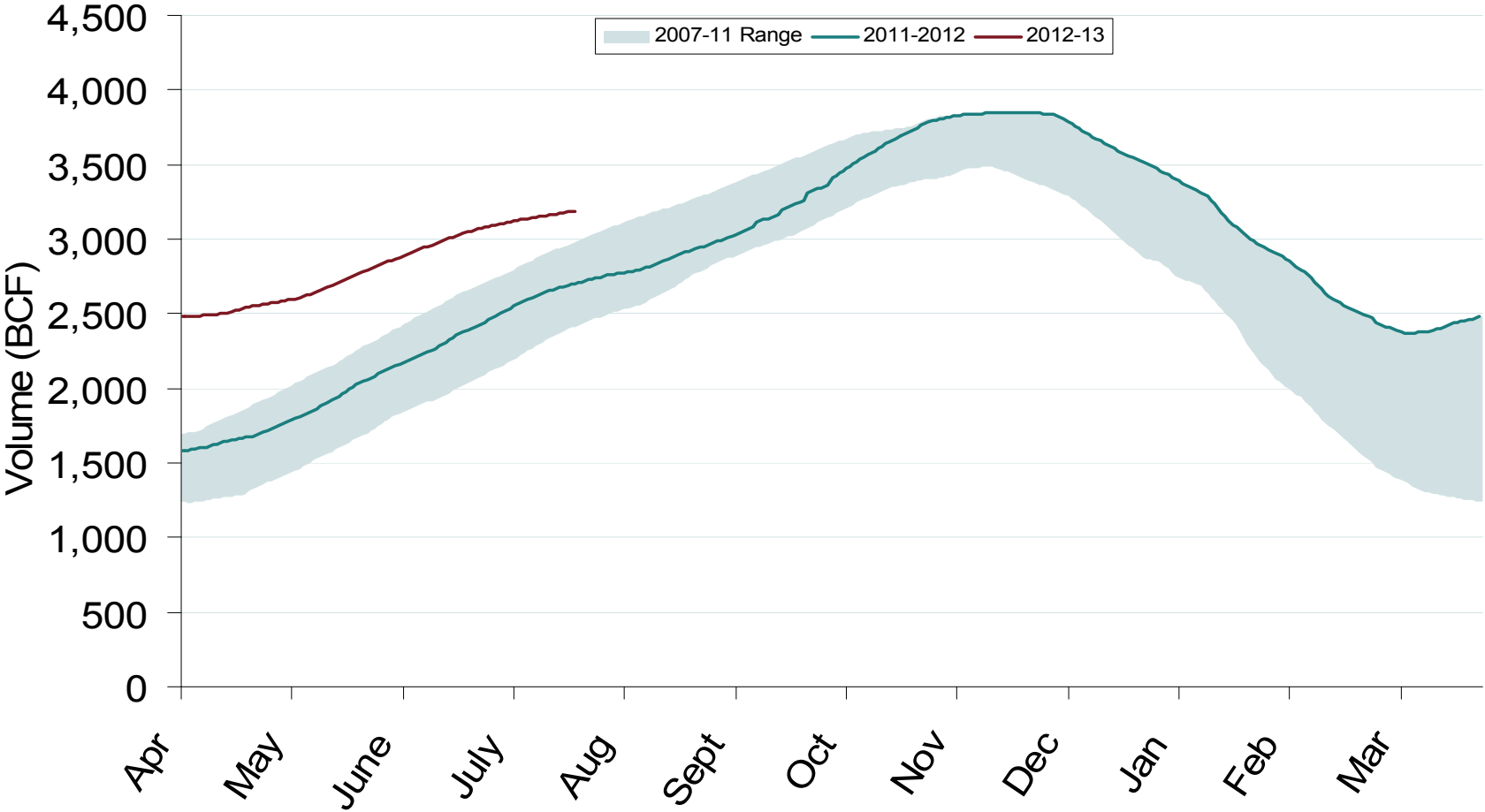
Federal Energy Regulatory Commission • Market Oversight • www.ferc.gov/oversight**U.S. and Canadian NG Drilling Rig Count and Daily Spot Prices**

Natural Gas Storage Inventories – July 27, 2012



Source: Derived from EIA Storage and Estimated Working Gas Capacity data
August 2012 Southeast Snapshot Report

Total U.S. Working Gas in Storage



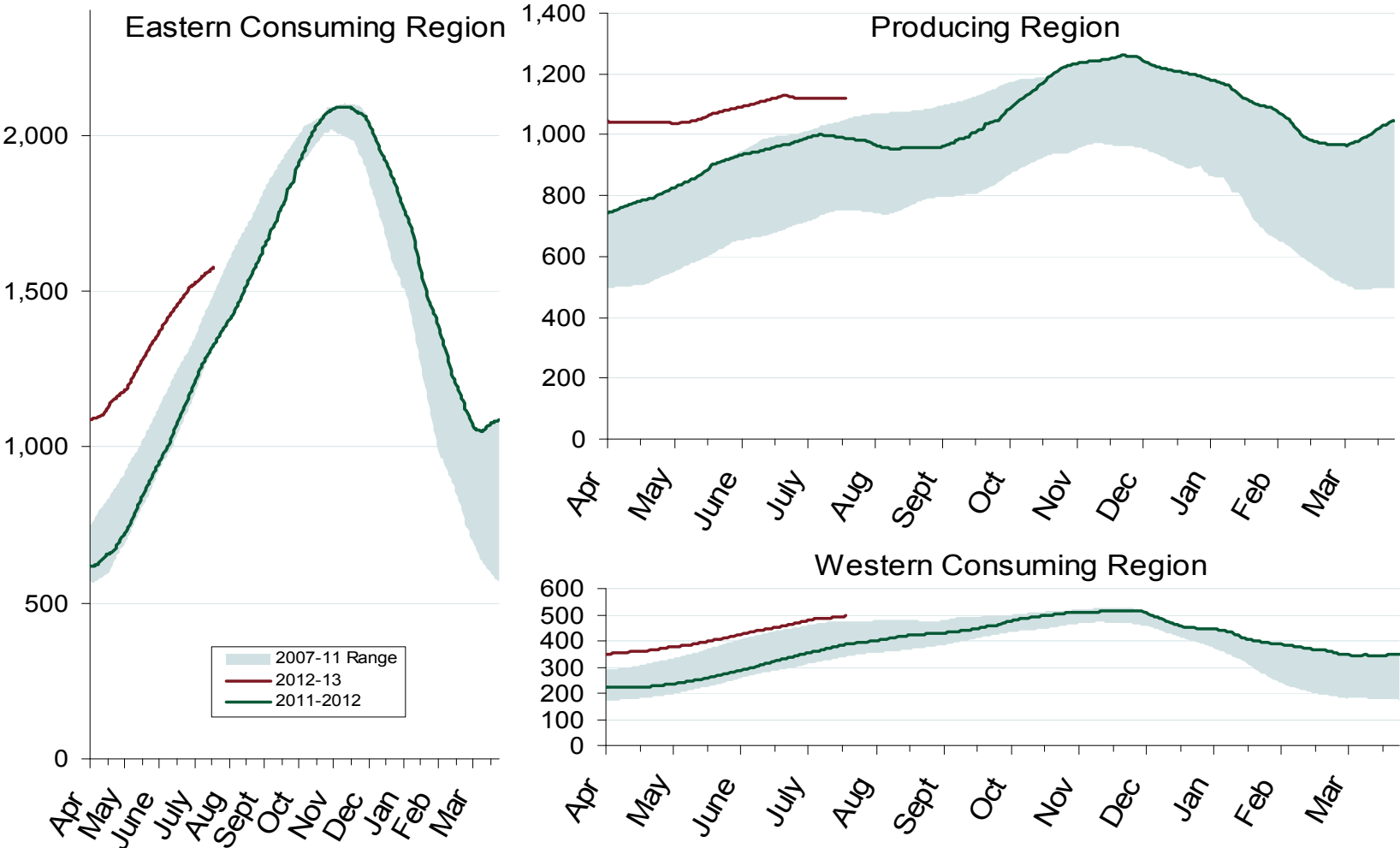
Source: Derived from EIA data
August 2012 Southeast Snapshot Report

Updated: August 06, 2012

Natural Gas Market Overview: Regional Storage

Federal Energy Regulatory Commission • Market Oversight • www.ferc.gov/oversight

Regional Totals of Working Gas in Storage



Source: Derived from EIA data
August 2012 Southeast Snapshot Report

Updated: August 06, 2012

Natural Gas Overview: World LNG Prices

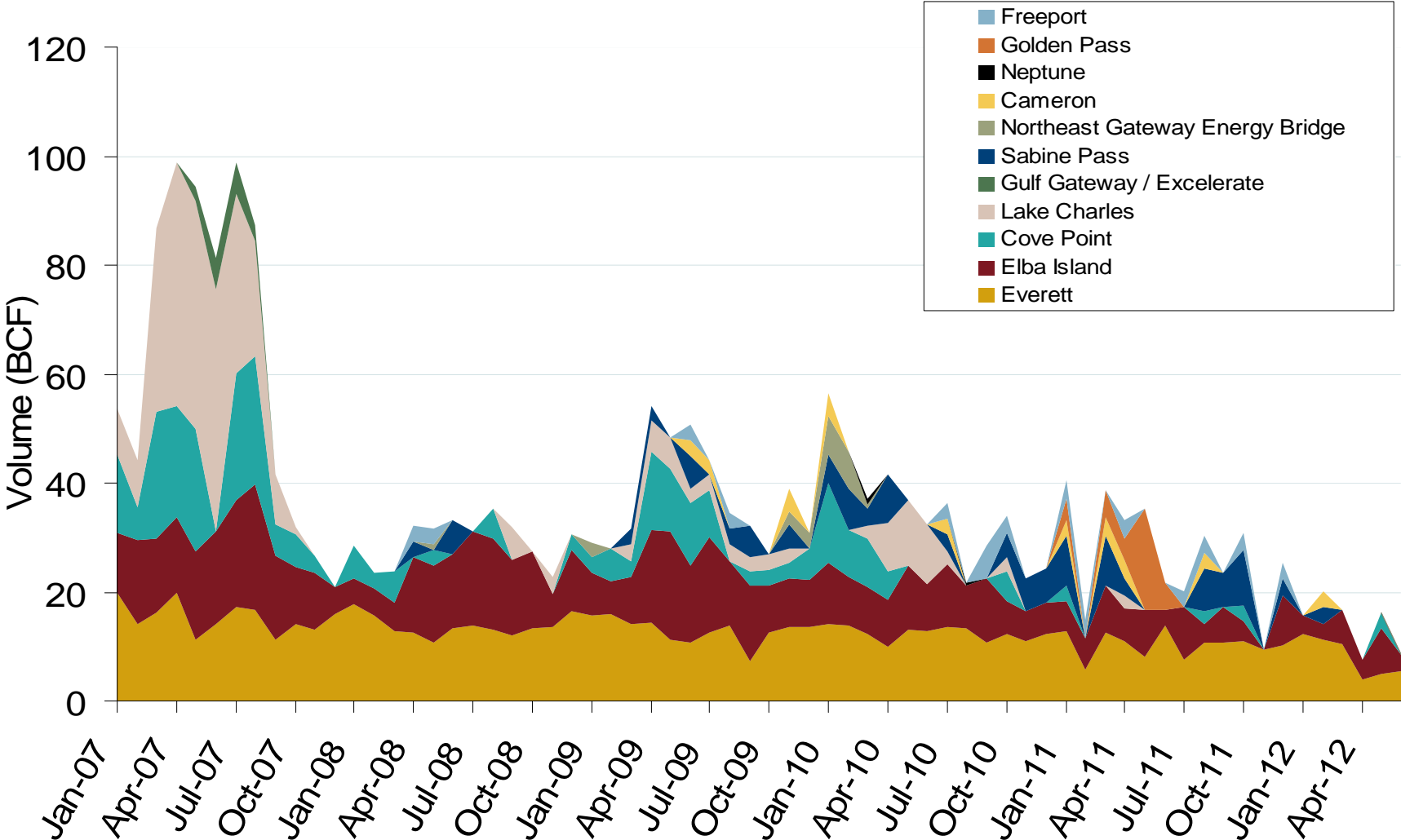
Federal Energy Regulatory Commission • Market Oversight • www.ferc.gov/oversight**World LNG Estimated September 2012 Landed Prices**

Source: Waterborne Energy, Inc. Data in \$US/MMBtu

August 2012 Southeast Snapshot Report

Updated: August 8, 2012 3024

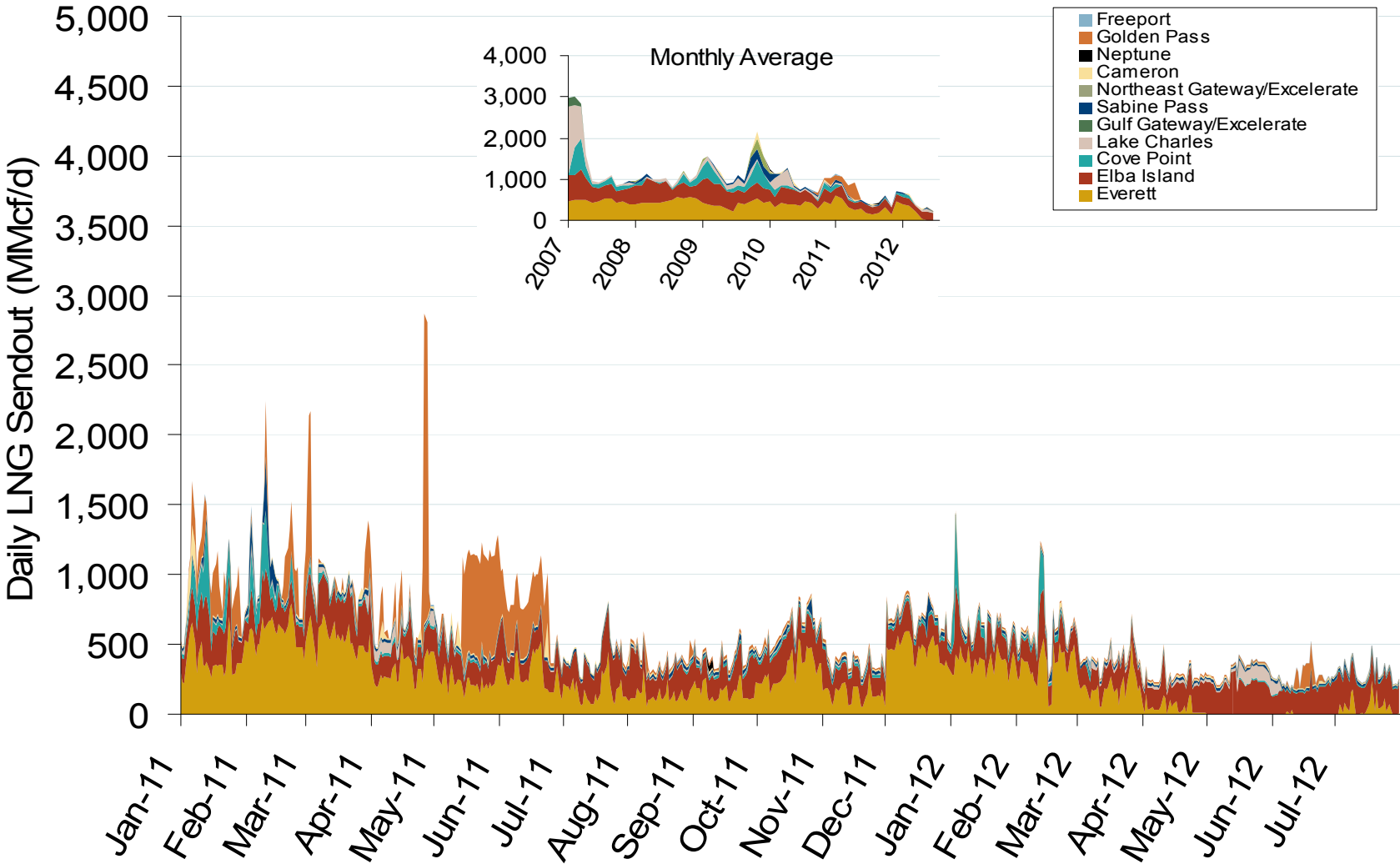
Monthly Gas Imports at Existing U.S. LNG Facilities



Source: Derived from DOE Office of Fossil Energy data
August 2012 Southeast Snapshot Report

Updated: August 8, 2012

Daily Gas Sendout from Existing U.S. LNG Facilities



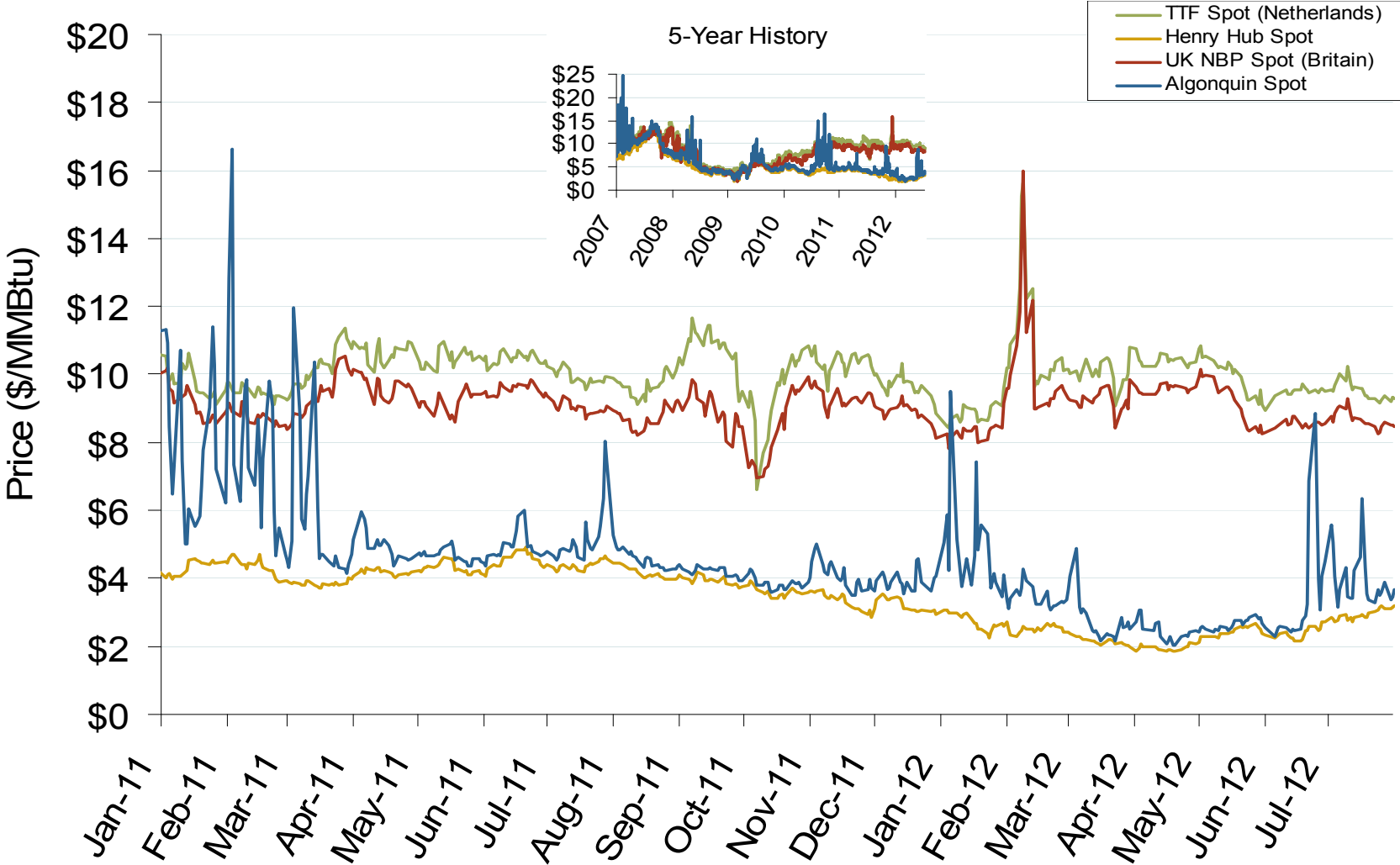
Notes: Everett data includes flows onto the AGT and TGP interstate lines, plus estimates of flows to the Mystic 7 power plant, Keyspan Boston Gas, and LNG trucked out of the terminal. Excludes Freeport LNG which flows via intrastate pipelines

Source: Derived from Bentek Energy data

August 2012 Southeast Snapshot Report

Updated: August 02, 2012

Atlantic Basin European and US Spot Natural Gas Prices



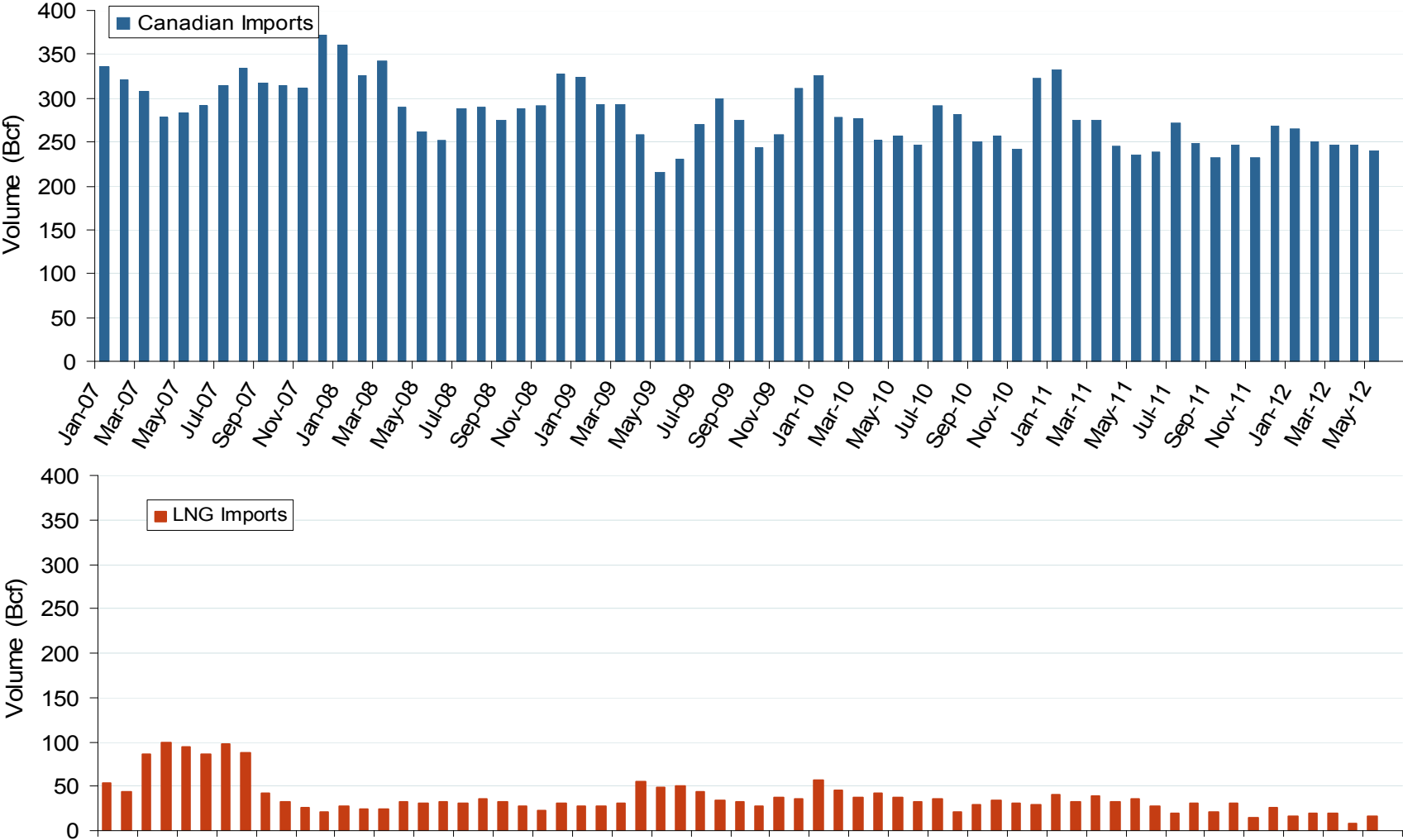
Source: Derived from *Bloomberg* and *ICE* data
August 2012 Southeast Snapshot Report

Updated: August 06, 2012

Natural Gas Overview: Natural Gas Imports

Federal Energy Regulatory Commission • Market Oversight • www.ferc.gov/oversight

Canadian and LNG Natural Gas Imports Into the U.S.



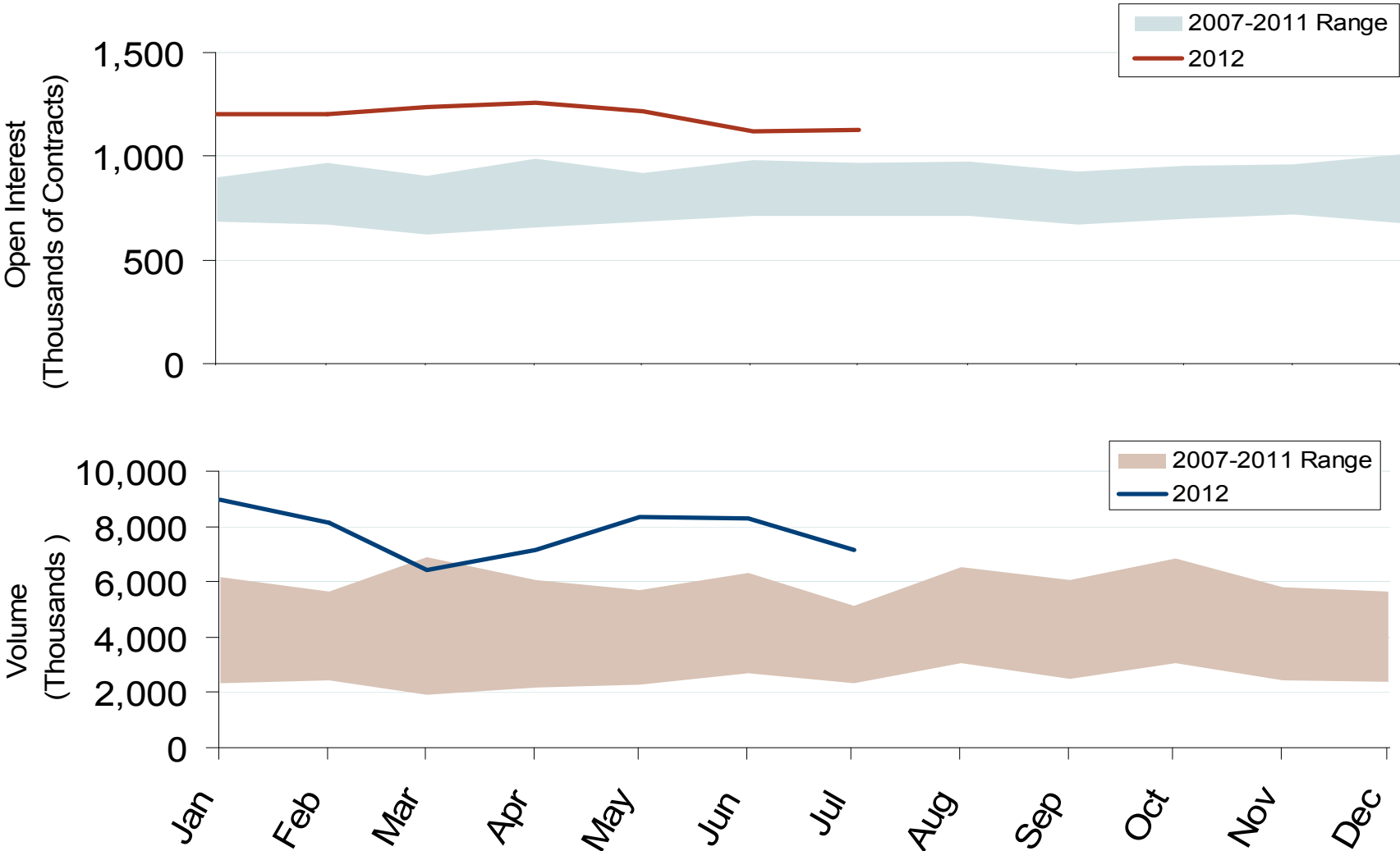
Source: EIA Natural Gas Monthly
August 2012 Southeast Snapshot Report

Updated: August 06, 2012

Natural Gas Trading: Futures Open Interest and Volume

Federal Energy Regulatory Commission • Market Oversight • www.ferc.gov/oversight

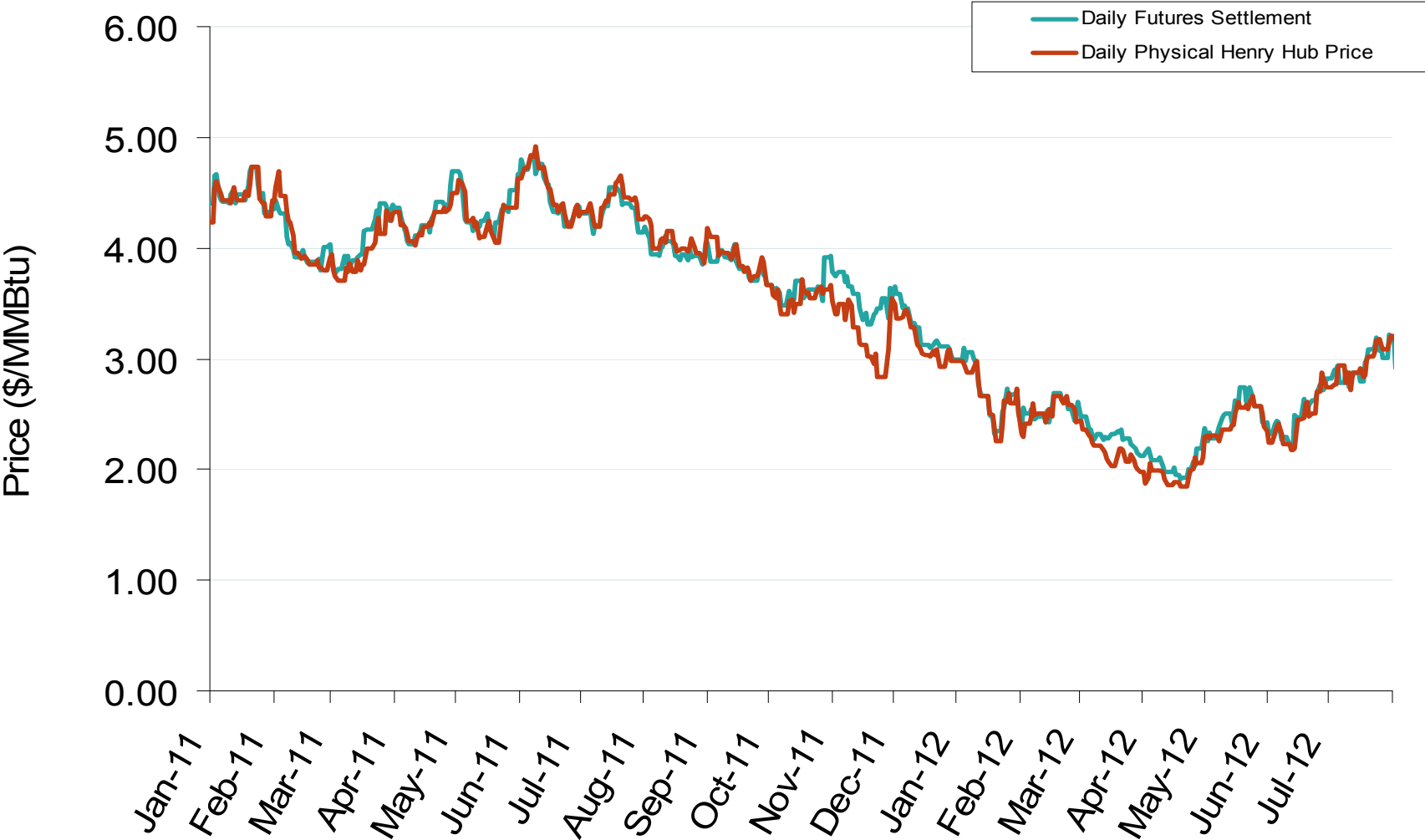
Nymex NG Futures Month-End Open Interest and Monthly Volume



Source: Derived from Nymex data
August 2012 Southeast Snapshot Report

Updated: August 06, 2012

Daily Physical Index Price & Daily Futures Settlement Price



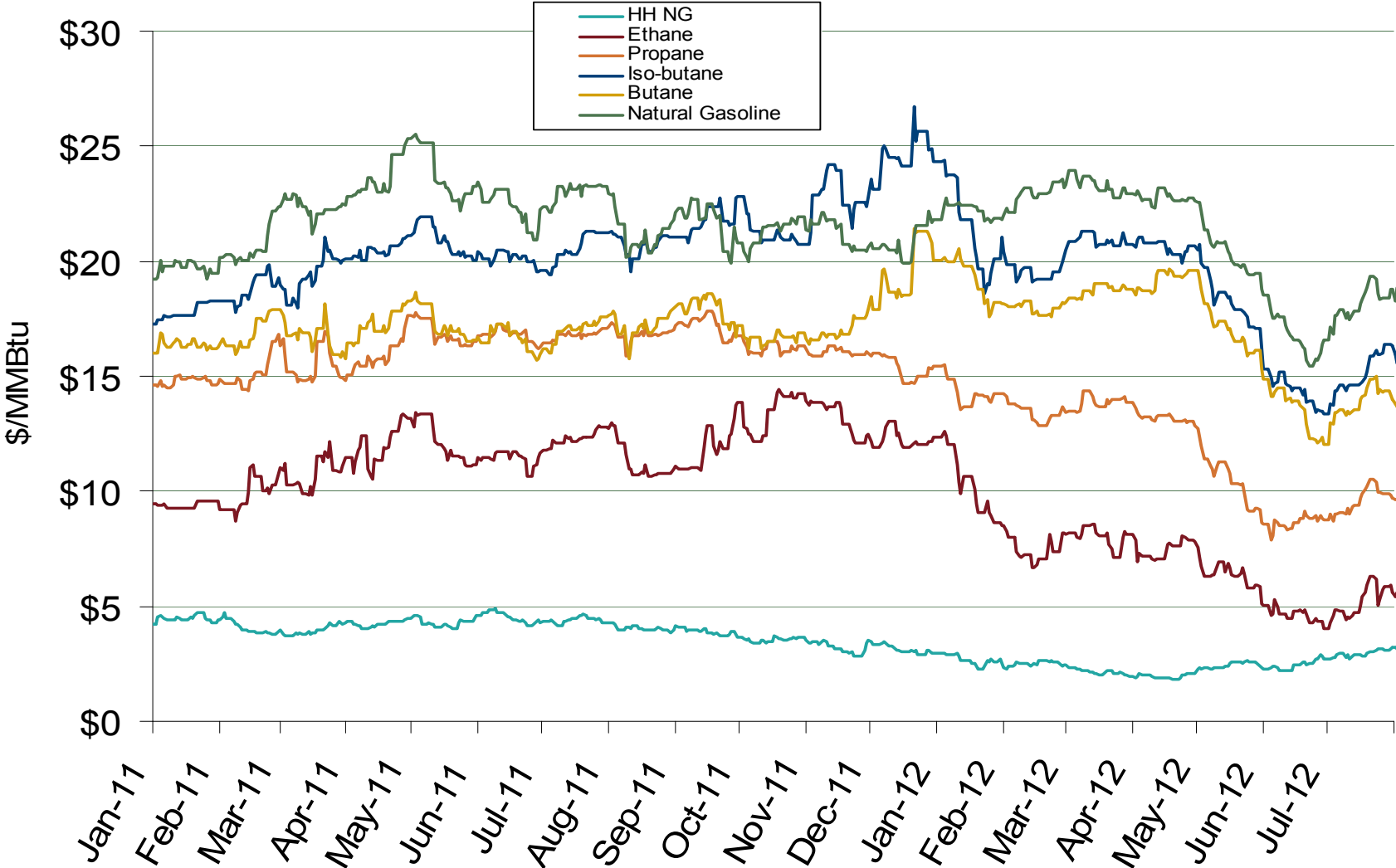
Source: Derived from *Bloomberg* data
August 2012 Southeast Snapshot Report

Updated: August 06, 2012

Natural Gas Market Overview: NGL Prices

Federal Energy Regulatory Commission • Market Oversight • www.ferc.gov/oversight

U.S. Natural Gas vs. Natural Gas Liquids (NGL) Prices



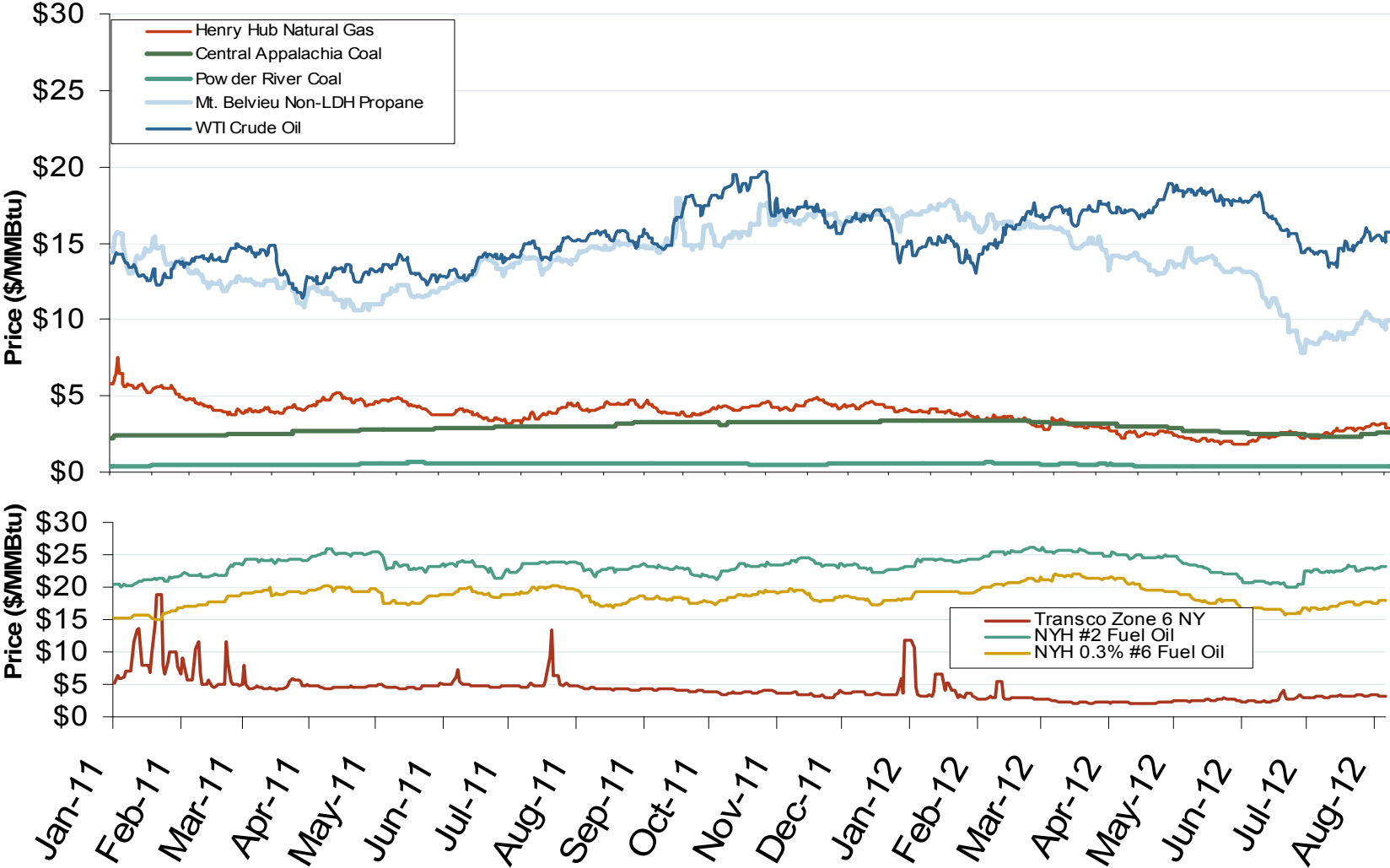
Source: Derived from Bloomberg Data
August 2012 Southeast Snapshot Report

Updated: August 06, 2012

Other Fuels Market: Fossil Fuel Prices

Federal Energy Regulatory Commission • Market Oversight • www.ferc.gov/oversight

Oil, Coal, Natural Gas and Propane Daily Spot Prices



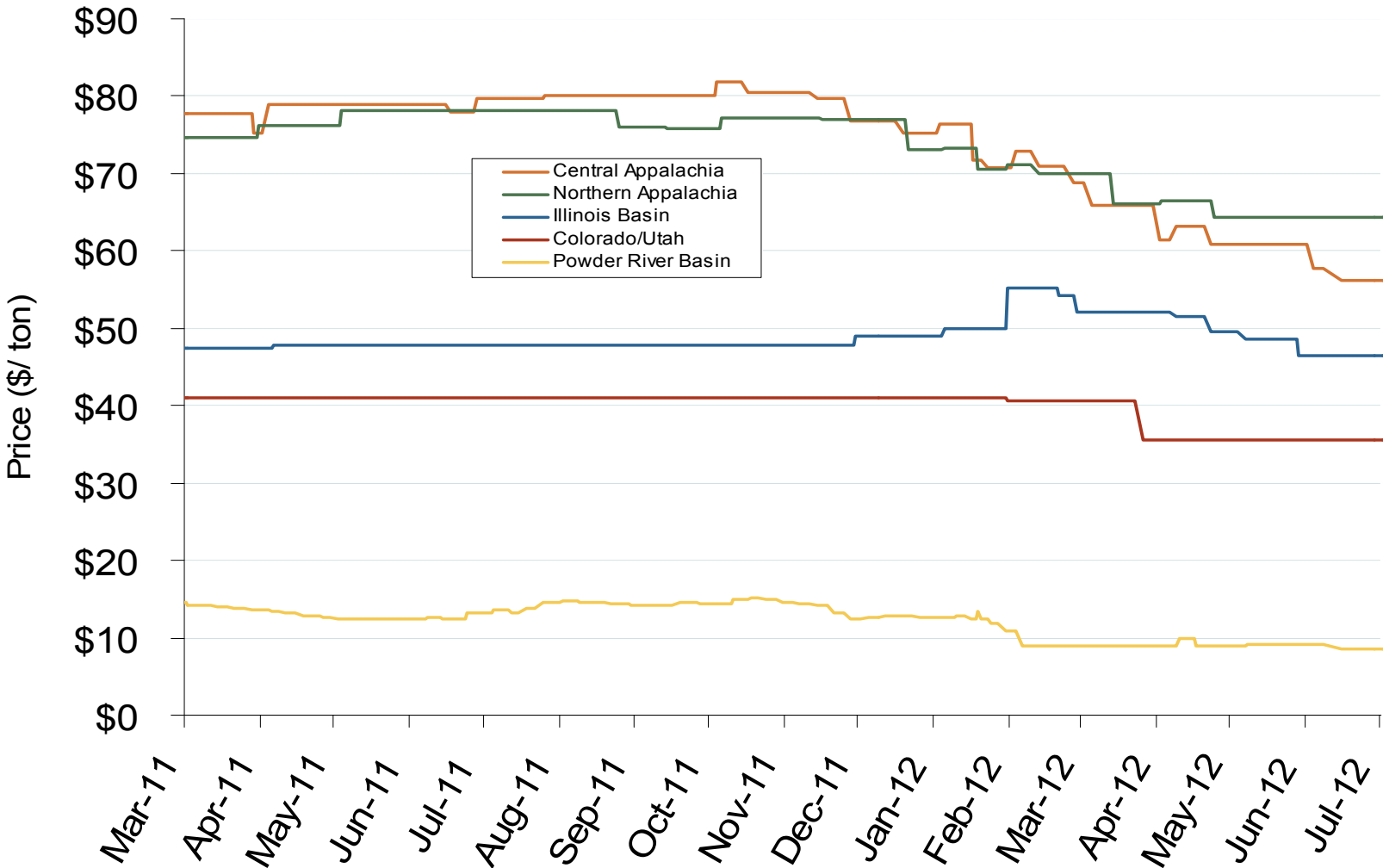
Notes: Coal prices are quoted in \$/ton. Conversion factors to \$/MMBtu are based on contract specifications of 12,000 btus/pound for Central Appalachian coal and 8800 btus/pound for Powder River Basin coal

Source: Derived from ICE and Bloomberg data

National Electric Market Overview: Coal Prices

Federal Energy Regulatory Commission • Market Oversight • www.ferc.gov/oversight

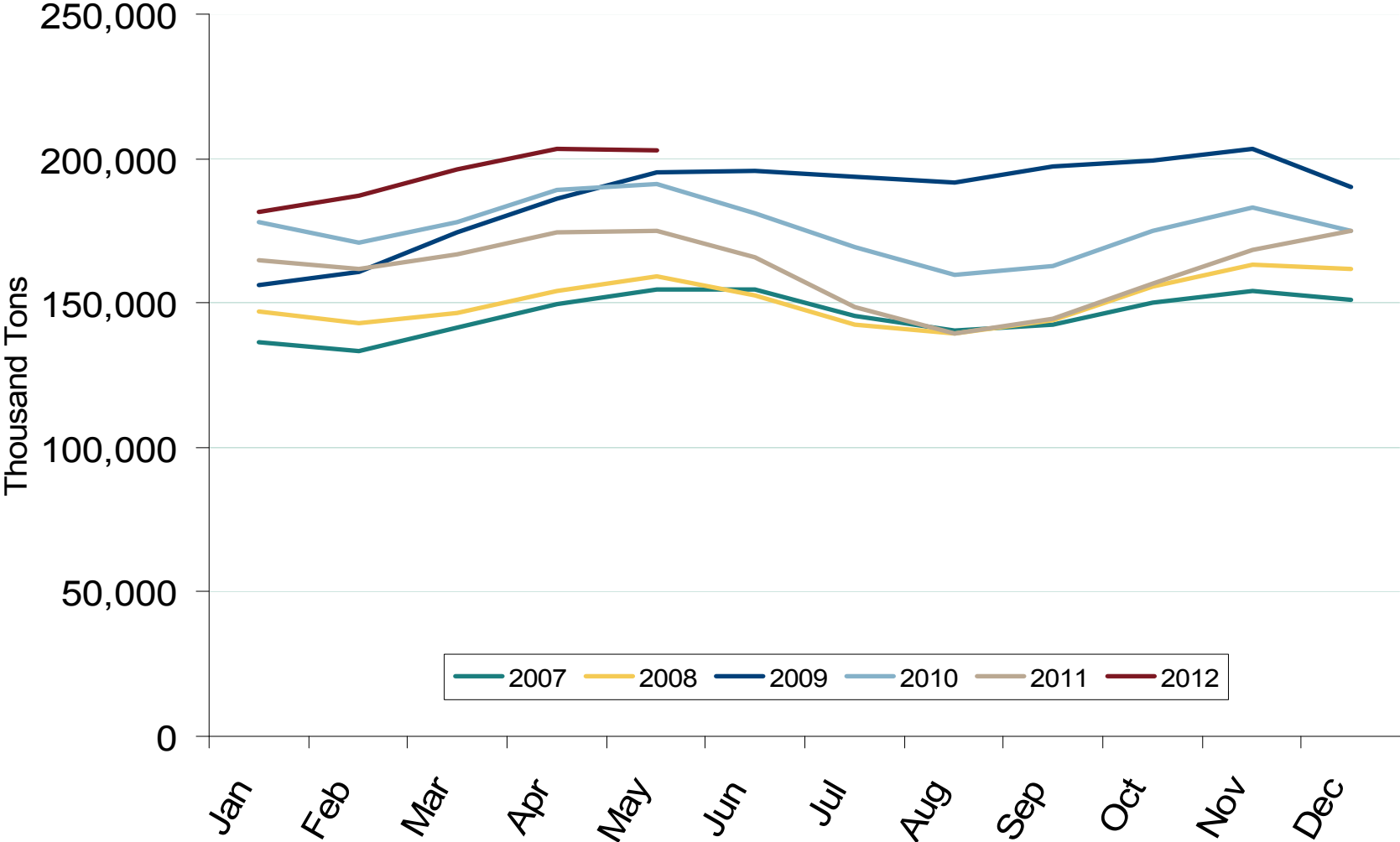
Central Appalachian and Powder River Basin Coal Prices



Notes: The Central Appalachian (CAPP) coal is priced at Big Sandy. All others are mine mouth prices. Prices do not include transportation costs to a plant, as those can vary widely by contract specifications. Prices exclude incremental cost of emissions allowances

Source: Derived from Bloomberg data

U.S. Coal Stockpiles at Electric Power Generating Facilities



Source: Derived from EIA data. Excludes Industrial and Commercial Plants
August 2012 Southeast Snapshot Report

Updated: August 02, 2012