

# **The Role of MPAs in Sustaining Non-Consumptive Uses**



**Pete Stauffer  
Surfrider Foundation**

**MPA Federal Advisory Committee Meeting  
Silver Spring, MD June 14, 2012**



# Surfrider Foundation

- 85 volunteer-based chapters in the U.S.
- Protection & enjoyment of the world's oceans, waves, and beaches
- Membership includes surfers, divers, kayakers, and beach-goers





# Position Statement on MPAs

## Support MPAs: Ecological & Recreational Benefits

- Goal driven
- Science-based
- Preservation balanced with access
- Communities involved in siting and designation
- Socioeconomics addressed
- Enforcement & scientific monitoring



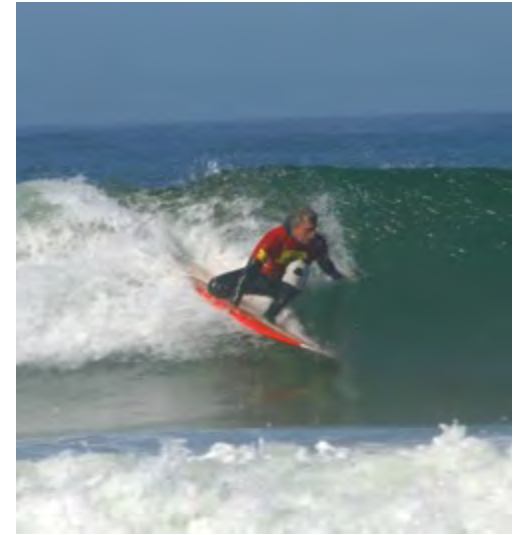


# MPA Engagement & Support

- Resource users
- Educational events
- Stewardship: beach cleanups etc.
- Citizen science
- Advisory councils participation
- Advocacy for funding, expansion etc.



# Non-Consumptive Recreational Use



# Oregon Recreational Ocean Use Study

- To collect **geospatial data** on non-consumptive recreation
- To estimate **numbers of users** in the non-consumptive recreational user community.
- To estimate the **economic impacts** of non-consumptive recreational ocean use



# Survey Recruitment

## Random Population Sample

- Representative sample
- Allows for extrapolating to larger population

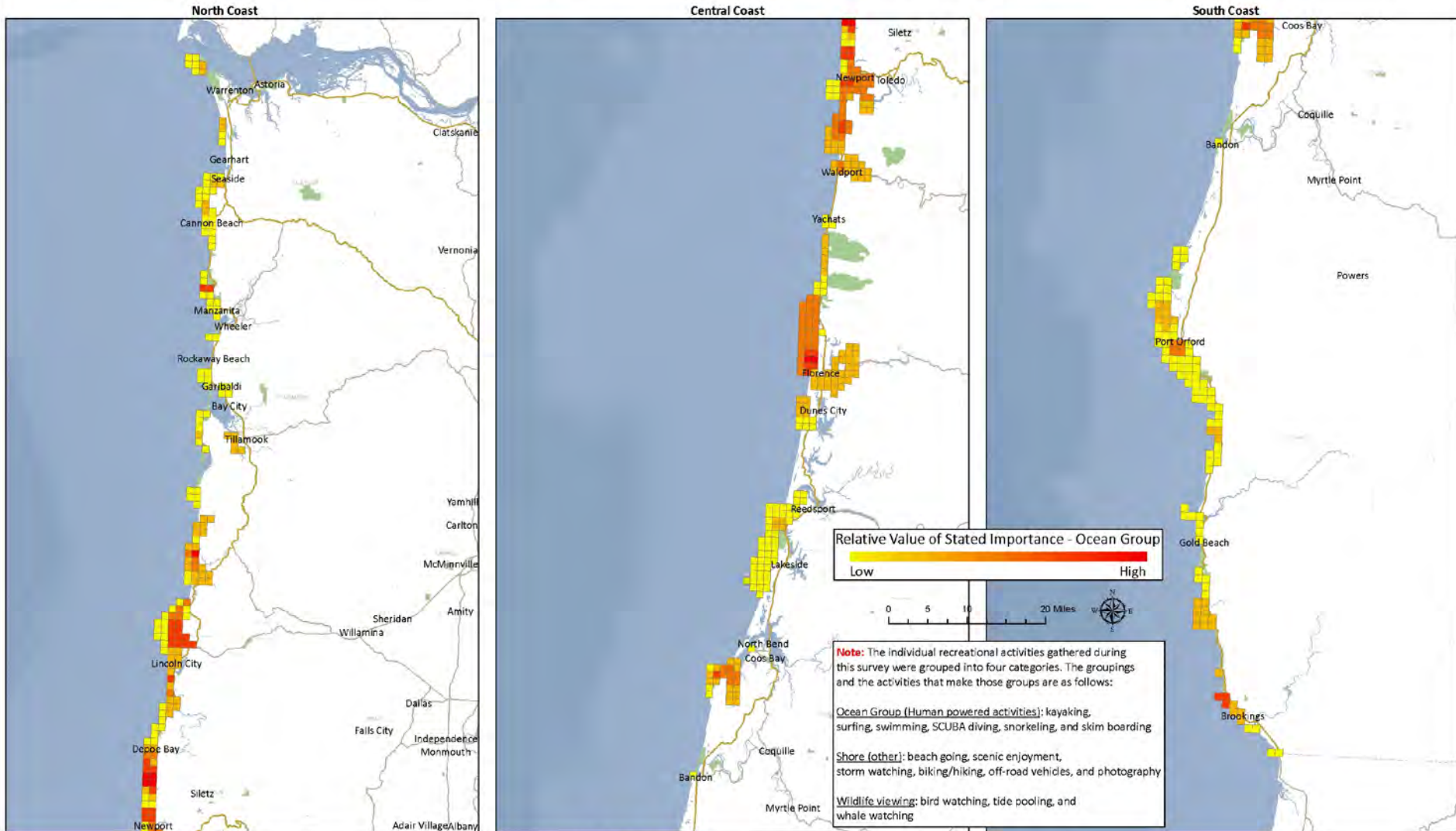
## Opt-in Survey

- Anyone can participate
- Outreach to key contacts, user groups, businesses, etc
- Richer information on recreational activity use



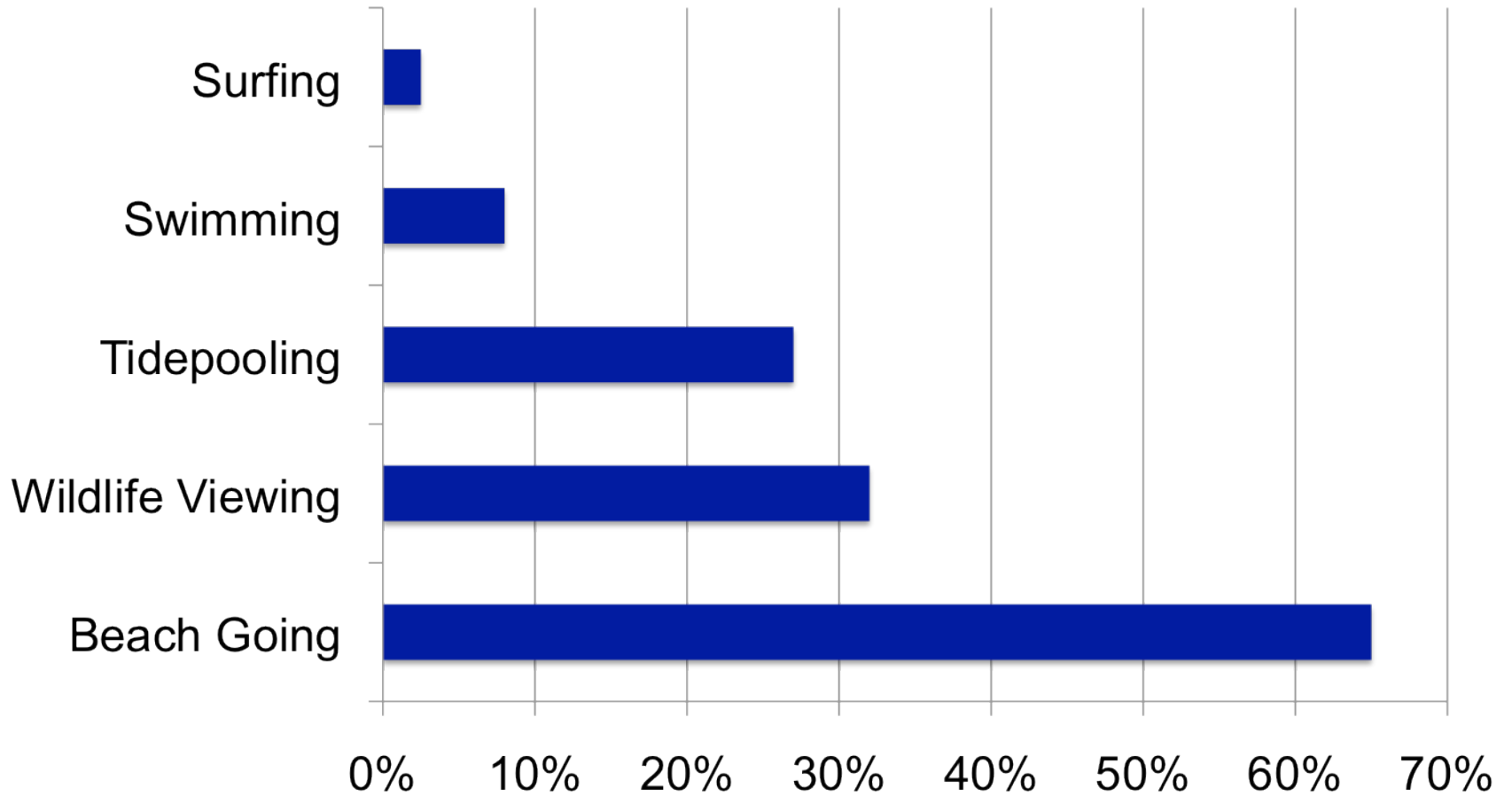
# Opt-in Data Results: Ocean Group

## Non-Consumptive Opt-In Cumulative Polygon Data Results - Ocean Group

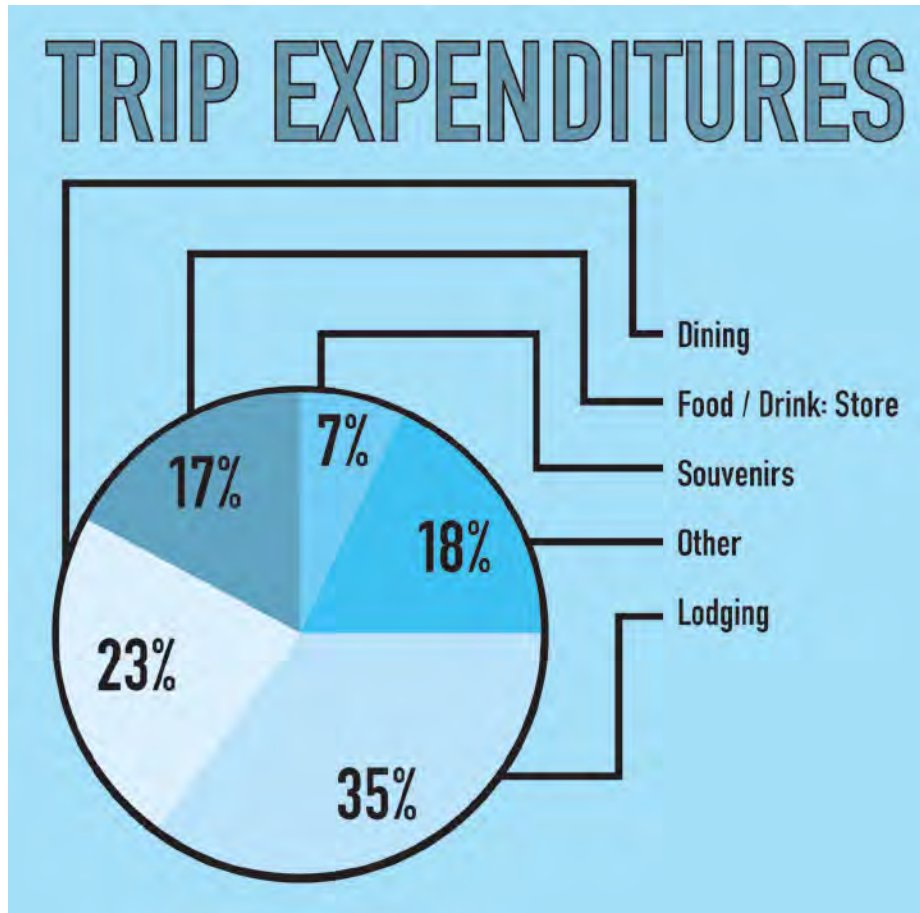




# Selected Activity Participation



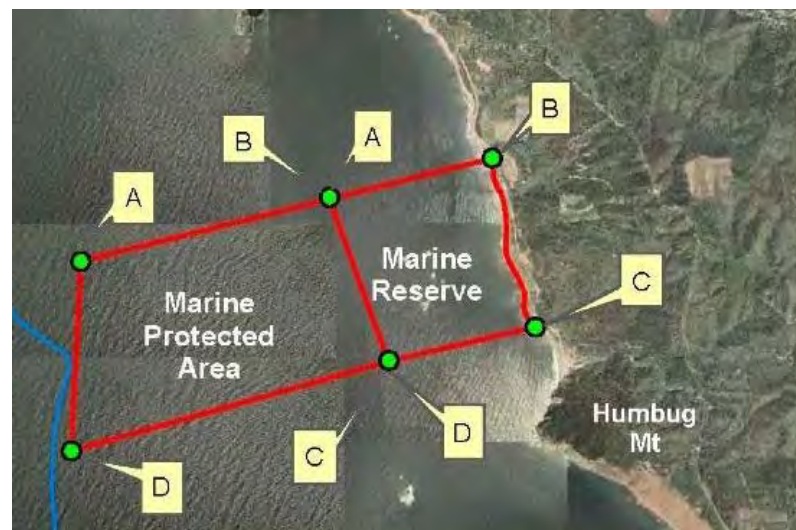
# Economic Impacts: Coastal Visitation



- 21 million estimated coastal trips in Ore.
- \$87 average trip expenditure
- \$2.4 billion in expenditures in 2010 (estimated)

# Port Orford, Oregon

- Redfish Rocks Marine Reserve (Oregon Pilot)
- Small community on south coast
- Exceptional nearshore ecosystem
- One in four jobs related to fishing
- Outstanding recreational opportunities



# Redfish Rocks Community Team

- **Stakeholder engagement:** recreational users
- **Education:** school programs, outreach events, etc.
- **Citizen Science:** water quality testing, etc.
- **Volunteer stewardship:** beach cleanups, etc.
- **Economic development:** Marine Interpretive Center, new business & ecotourism opportunities



# Rincon, Puerto Rico

- Reserva Marina Tres Palmas
- Community designation process with NOAA
- ‘Surf Protection’ part of goal
- Rincon: 60% jobs related to coastal tourism



# RESERVA MARINA TRES PALMAS

Designada bajo la Ley 17 - 8 de enero de 2004  
"Ley de la Reserva Marina Tres Palmas de Rincón"

## Actividades Permitidas Activities Allowed



Surfear  
Surfing



Buceo/Buceo Libre  
Scuba/Snorkeling



Pasadia  
Picnicking



Caminar  
Walking



Observación de la Naturaleza  
Nature Watching



Fotografía  
Photography

## Actividades Prohibidas Prohibited Activities



Pesca  
Fishing



Pesca con Figa  
Spearfishing



Tirar Basura  
Littering



Colección de Cualquier Tipo  
Collection of any kind



## Recursos Naturales Natural Resources



Comunidades de Coral  
"Cuerno de Alce"  
Elkhorn Coral Communities  
*Acropora palmata*



Ballenas Jorobadas  
Humpback Whale  
*Megaptera novaeangliae*



Delfin Hocico De Botella  
Bottlenose Dolphin  
*Tursiops truncatus*



Peces Comunes del Arrecife  
Common Reef Fishes  
Parrot Fish, Blue Tang, Surgeonfish,  
Sergeant Major, Yellowtail



Carey de Concha  
Hawksbill Turtle  
*Eretmochelys imbricata*



Langosta Espinosa  
Spiny Lobster  
*Panulirus argus*

Una reserva marina es un área protegida con recursos excepcionales en la cual no se permite daño ni extracción alguna. Esta reserva marina contiene algunas de las comunidades de coral "Cuerno de Alce" mejor conservadas en el Caribe.

A marine reserve is a protected area with exceptional natural resources that are protected and must not be removed or damaged. This marine reserve contains some of the healthiest Elkhorn Coral communities in the Caribbean.

Los corales se dañan al tocarlos, pararse en ellos, removerlos, anclarse y son sofocados por la basura y sedimento. Corals are damaged by touching, standing, anchoring, and can be smothered by trash and sediment.

Por favor, nade horizontalmente al entrar al arrecife y mantenga una distancia razonable entre su cuerpo y los corales, para evitar tocarlos. Please swim horizontal to the reef and maintain a safe distance to avoid contact with the corals.

Recoja su basura y mantenga la playa limpia para ayudar a proteger la vida marina. Pick up your trash and keep the beach clean to help protect sea life.



Para información o para reportar actividades ilegales, por favor llame al: For information or to report unlawful activity, please call: (787)882-5827 or (787)724-5700



Quiero el patrocinio de: This sign must accompany the grant form. SUPPLY

Este Reserva Marina es un regalo de las comunidades de Estado y las agencias gubernamentales y académicas. This Marine Reserve is supported by the community of State and the following governmental and academic agencies.



# Opportunities for MPAs in Supporting Tourism & Recreational Uses

- Protect recreational uses & related values
- Educate users/ visitors
- Citizen science
- Volunteer stewardship
- Demonstrate value of MPA



# Challenges for MPAs in Supporting Tourism & Recreational Uses

- Loving the resource to death
- Access concerns: “disturbance”
- Protecting “secret spots”
- Competing uses
- Connecting managers to recreational users
- Jurisdictional limitations





# How can MPA programs improve their engagement & support from recreational users

- Protect the resource
- Ensure access, amenities
- Communicate: signage, web-based, events, newsletters etc.
- Partner with user groups, associations
- Advisory councils, community teams
- Collaborative mapping



# Questions?

Pete Stauffer  
Ocean Program Manager  
Surfrider Foundation  
(503) 887-05114  
[pstauffer@surfrider.org](mailto:pstauffer@surfrider.org)  
[www.surfrider.org](http://www.surfrider.org)







# Oregon's Marine Reserve Program

**Goal** “Protect and sustain a limited system of ecologically special places in Oregon’s Territorial Sea to:

- Conserve marine habitats and biodiversity;
- Provide a framework for scientific research and effectiveness monitoring and
- Avoid, to the extent practicable, potential adverse social & economic effects

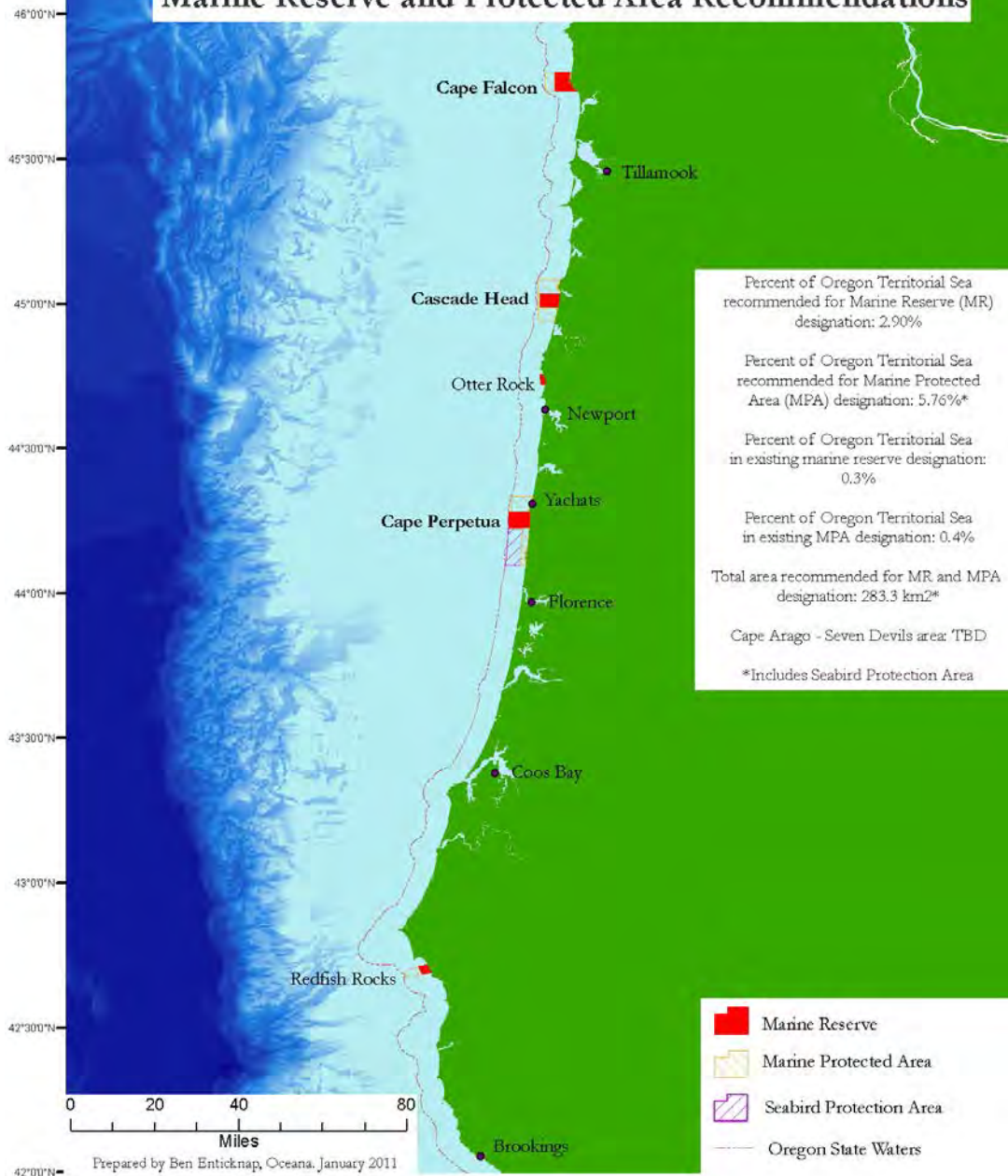


# Oregon's Marine Reserves Process

- Over 10 years and counting...
- Governor: OPAC directive
- OPAC adopts Policy Guidance Doc (2008)
- Size & Spacing Guidance (2008)
- Public proposal process (2008)
- HB 3013: 2 designations & 4 areas for further evaluation (2009)
- 3 more sites recommended (2011)
- 2012 – legislation expected



# Oregon Department of Fish and Wildlife & Ocean Policy Advisory Council Marine Reserve and Protected Area Recommendations



**Map Courtesy of Ben Enticknap, Oceana**





# Socioeconomic Working Group

## Economic Development

- New business and ecotourism opportunities
- Income opportunities for fishermen
- Establish a field research station in Port Orford
- Develop a Marine Reserve Interpretive Center



# Redfish Rocks Community Team

- Assist ODFW in developing a management plan for Redfish Rocks
- Serve as liaisons to the community on matters regarding Redfish Rocks
- Develop recommendations based on ecological & socioeconomic information



# Site-Specific Goals: Redfish Rocks \*

- Protect the habitats, biological communities, and ecological services
- Enhance public awareness of natural & cultural resources
- Promote scientific research & monitoring
- Minimize significant adverse social & economic impacts
- Promote economic development around research, education, and tourism



**\* (language abbreviated)**

