



# LANDFIRE

Landscape Fire and Resource Management  
Planning Tools Project

## Charter

*Project sponsored by the Wildland Fire Leadership Council (WFLC)*



# LANDFIRE PROJECT CHARTER

## **1. Identification**

This project is to be known as the Landscape Fire and Resource Management Planning Tools Project, also referred to as the LANDFIRE project.

## **2. Project Scope**

LANDFIRE is a landscape-scale fire, ecosystem, and fuel assessment mapping project designed to generate comprehensive maps of vegetation, fire and fuel characteristics nationally and identify and develop a set of tools to create and distribute data to users.

The LANDFIRE project includes these components:

- Completion and delivery of the LANDFIRE prototype
- National Rapid Assessment
- The national interagency implementation of the LANDFIRE prototype
- Technology transfer of LANDFIRE project products and procedures to customers

The Rapid Assessment will deliver a "first pass", mid-scale assessment of fire regime conditions that is moderately accurate but quickly delivered and will be a foundation for the national implementation.

The national implementation of LANDFIRE will develop maps and digital geospatial data of vegetation characteristics and condition, fire behavior and effects, fuel models, historical fire regimes and fire regime condition class at the landscape scale.

The LANDFIRE project will provide data sets, models, procedures and tools to help land managers:

- Identify priority areas for reduction of wildfire risks associated with hazardous fuels.
- Provide answers to questions on the amount of area at risk to wildfire within the vicinity of local communities.
- Facilitate environmental analysis to lead to successful implementation of projects at the field level that will result in reduced wildfire risk to communities and environments.
- Facilitate preparation of biological evaluations, associated consultation, and approval of projects by the Fish & Wildlife Service, National Marine Fisheries Service, and Environmental Protection Agency.
- Allow delivery of consistent information at different scales and provide an information foundation for monitoring progress in reducing risk.

### **3. Sponsorship**

This project is sponsored by the Wildland Fire Leadership Council (WFLC). The estimated development cost will be \$40 million from FY04 through FY09, apportioned between the Forest Service (60%) and Department of Interior agencies (40%).

As the designated Lead Agency for LANDFIRE, the Forest Service shall be responsible for overall success of LANDFIRE, working in consideration and on behalf of all partners.

### **4. Project Deliverables and Quality Objectives**

This LANDFIRE project will develop maps and digital geospatial data of vegetation characteristics and condition, fire behavior and effects, fuel models, historical fire regimes and fire regime condition class. Extensive field data will be compiled from existing sources. Additional field data will be collected as needed. This “reference database” is a deliverable to be periodically updated and maintained. In addition, related intermediate map products, models, protocols and methods are also LANDFIRE project deliverables. Products and practices will comply with applicable NWCG IRM standards.

Map data will be produced based on peer-reviewed science related to remote sensing, ecosystem simulation, predictive landscape modeling, vegetation disturbance dynamics, and fire behavior and effects.

Specific deliverables include:

- Maps of fire regime condition class
- All geospatial data needed to run geospatial fire behavior models, such as FARSITE, and fire effects models.
- For those participating agencies who request it, the LANDFIRE project will establish a work task to explicitly and systematically address how its products fit into the agency's vegetation data management standards and activities.
- Maps of existing and potential vegetation
- Maps of historical fire regimes
- Maps of structure stages, canopy density, and height classes.
- Maps of fire behavior fuel models, fuel loading models and fuel characterization class.
- Guidebooks, training and workshops to incorporate LANDFIRE data into regional and local land and resource management and planning processes.
- Distributing LANDFIRE products to users.
- An “Operations and Maintenance Handoff Plan”.

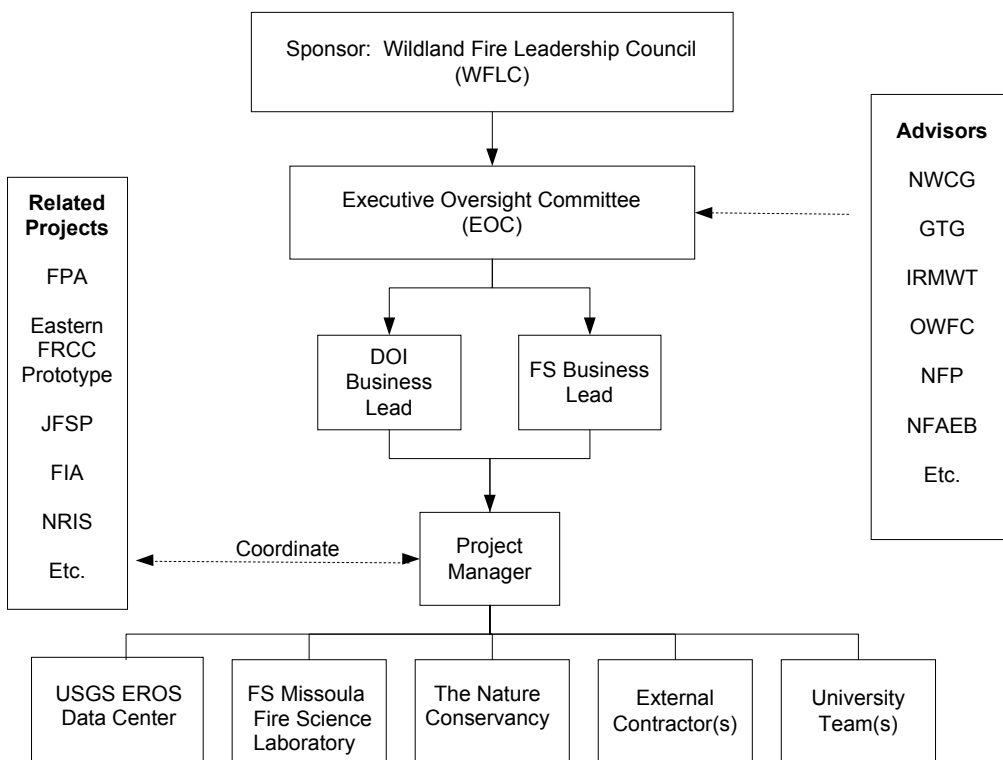
The Rapid Assessment component is developed by expert opinion to meet short-term management needs until more robust data become available. Because this rapid assessment incorporates expert opinion, it cannot be repeated in the future to compare to the first rapid assessment and detect change. Minimum validation will be performed on the rapid assessment data. Target accuracy for the rapid assessment data will be 60-80% at mid-scale.

The national implementation of LANDFIRE processes will be repeatable, making it suitable for monitoring change in risk over time. A key quality objective is consistency across all ownerships nationwide. This will be accomplished by using consistent models and definitions across the country that are driven by reference plot data.

## 5. Key Milestones

Key Milestones	Scheduled Completion
Rapid Assessment for coterminous 48 states	3 <sup>rd</sup> Quarter FY 2005
LANDFIRE for western states	2 <sup>nd</sup> Quarter FY 2006
LANDFIRE for eastern states	2 <sup>nd</sup> Quarter FY 2008
LANDFIRE for Alaska	4 <sup>th</sup> Quarter FY 2009

## 6. Organization and Responsibilities



## Executive Sponsors

WFLC members are the executive sponsors of this project and are responsible for:

- Providing project funding.
- Advocating for LANDFIRE with Departmental executives, OMB and Congress.
- Supporting incorporation of LANDFIRE products and concepts into agency business practices.
- Providing broad strategic direction for LANDFIRE and related initiatives.
- Ensuring staffing.

- Remaining informed of project status and relevant issues.
- Approving and signing the project charter.
- Endorsing the membership of the Executive Oversight Committee, and supporting the EOC's oversight of the LANDFIRE project.

## **Executive Oversight Committee**

The Executive Oversight Committee (EOC) is a group of managers that represent the agencies and entities that will benefit from the deliverables produced by the LANDFIRE project. EOC members will provide communication to and from their agency directors and the Wildland Fire Leadership Council.

The EOC members are responsible for:

- Supporting the project in principle and through agreed upon funding.
- Providing a point of coordination and collaboration within and between sponsoring agencies.
- Reviewing and accepting project plans and deliverables.
- Making high-level decisions affecting the project.
- Reviewing and accepting study plans and annual work plans.
- Reviewing and approving a detailed project plan that meets NWCG project guidelines.
- Staying abreast of the project's status and relevant issues.
- Considering recommendations from Project Advisors regarding the overall execution of the project plan and deliverables.
- Providing strategic business direction.
- Facilitating support for reference data acquisition, participation in workshops, and review of deliverables.
- Resolving issues that cannot be resolved by the Business Leads and Project Manager.
- Helping the Business Leads make decisions regarding scope, time, quality and cost tradeoffs.
- Ensuring Congressional mandates and Agency and OMB policies are fulfilled.

## **Business Leads**

There will be a two Business Leads, one from DOI and one from the FS. Business Leads are representatives of the business community external from the Project Team. They are responsible for:

- Organizing interagency funding to implement the project.
- Providing unified direction to the Project Manager to ensure that business requirements and stakeholder expectations are met.
- Establishing, maintaining, and communicating the business case for LANDFIRE.
- Performing their role as specified in the project communications plan.
- Representing the LANDFIRE project as spokespersons to stakeholders and various publics.
- Coordinating among staff units and agencies at the Washington Office level.
- Facilitating and coordinating linkages among related national efforts.

- Ensuring that the A11-Exhibit 300 business case and all necessary approvals and authorizations are developed and maintained in accordance with established Departmental and Agency guidelines.
- Assisting the Project Manager and EOC in resolving issues affecting scope, time, quality, and cost.
- Providing LANDFIRE project progress reports and feedback to the business community.

## **Project Manager**

The Project Manager has direct, day-to-day responsibility for the LANDFIRE project. The Project Manager will be assigned full time to the LANDFIRE project for the duration of the project.

The Project Manager is responsible for:

- Organizing, leading, and directing the LANDFIRE Project Team.
- Ensuring that the LANDFIRE project is completed within scope, on schedule and within budget.
- Developing, maintaining, and managing a comprehensive project management plan that meets NWCG project guidelines and submitting that plan to the EOC for approval.
- Ensuring completion, delivery, and acceptance of all project deliverables specified in the LANDFIRE project Charter.
- Provide expert assistance to the Business Leads in the preparation of the A11-Exhibit 300 business case and all necessary approvals and authorizations required by established Departmental and Agency guidelines.
- Developing and submitting budgets, controlling and tracking project expenditures.
- Reporting project status according to Departmental, Agency, and sponsoring entity requirements.

## **Project Team**

The LANDFIRE Project Team includes all the people who will conduct the work to successfully complete the project. The Project Team will include specific and accountable members from the Missoula Fire Sciences Lab (MFSL), USGS EROS Data Center (EDC), The Nature Conservancy (TNC), contractors, universities and others as needed.

## **Related Projects**

LANDFIRE will coordinate activities with other related programs and projects such as the Fire Program Analysis (FPA), the Eastern Fire Regime Condition Class Prototype, the Joint Fire Science Program (JFSP), the Forest Inventory Assessment (FIA) and the Forest Service Natural Resource Information System (NRIS).

## **Project Advisors**

Project advisors serve the Executive Oversight Committee providing periodic input on specialty subjects. Members may include:

- Existing organizations such as the National Wildfire Coordinating Group (NWCG), the NWCG Geospatial Task Group (GTG), the NWCG Information Resources Management Working Team (IRMWT), DOI Office of Wildland Fire Coordination (OWFC), and the FS National Fire Plan (NFP), National Fire and Aviation Executive Board (NFAEB), and the National Fuels Coordinating Group (NFCG).
- Subject Matter Experts in relevant areas, e.g., fuels management, GIS, fire ecology, etc., who may be called upon periodically throughout the project.
- Ad Hoc Technical Advisory Teams – Ad hoc Technical Advisory Teams may be formed as needed to provide advice on technical issues affecting the LANDFIRE project. Technical Advisory Teams will also interface with the user community to convey user needs, interests and priorities.

## 8. Approval Section

This LANDFIRE project Charter is effective as of the date of signature. By signing, WFLC indicate their agreement and support of the project charter and their commitment to the project. This charter is subject to amendment with the concurrence of WFLC.

---

P. Lynn Scarlett, WFLC Chair  
DOI Assistant Secretary for Policy,  
Management and Budget

---

Mark Rey  
Under Secretary for Natural Resources and  
Environment, USDA

---

Rebecca W. Watson  
DOI Assistant Secretary for Land and  
Minerals Management

---

David Tenny  
Deputy Under Secretary for Natural  
Resources and Environment, USDA

---

Kathleen Clarke  
Director, DOI Bureau of Land  
Management

---

Dale N. Bosworth  
Chief, USDA Forest Service

---

Fran P. Mainella  
Director, DOI National Park Service

---

James Hubbard  
Chairman, Fire Protection Committee,  
National Association of State Foresters

---

Steven A. Williams  
Director, DOI Fish and Wildlife Service

---

Charles Dickinson  
Deputy U.S. Fire Administrator, Federal  
Emergency Management Agency

---

Aurene Martin  
Principal Deputy Assistant Secretary, Indian  
Affairs

---

Dirk Kempthorne  
Governor, State of Idaho  
Western Governors' Association

---

Charles Groat  
Director, DOI US Geological Survey

---

Nolan C. Colegrove Sr.,  
President, Intertribal Timber Council

---

Ronald Christensen  
Representative, National Association of  
Counties