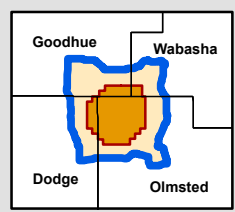
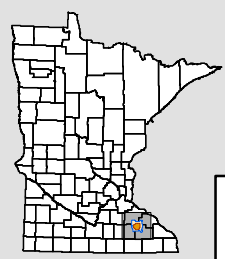


Adult Deer Sampled For Chronic Wasting Disease As Of April 11th, 2011



Samples (n = 752)

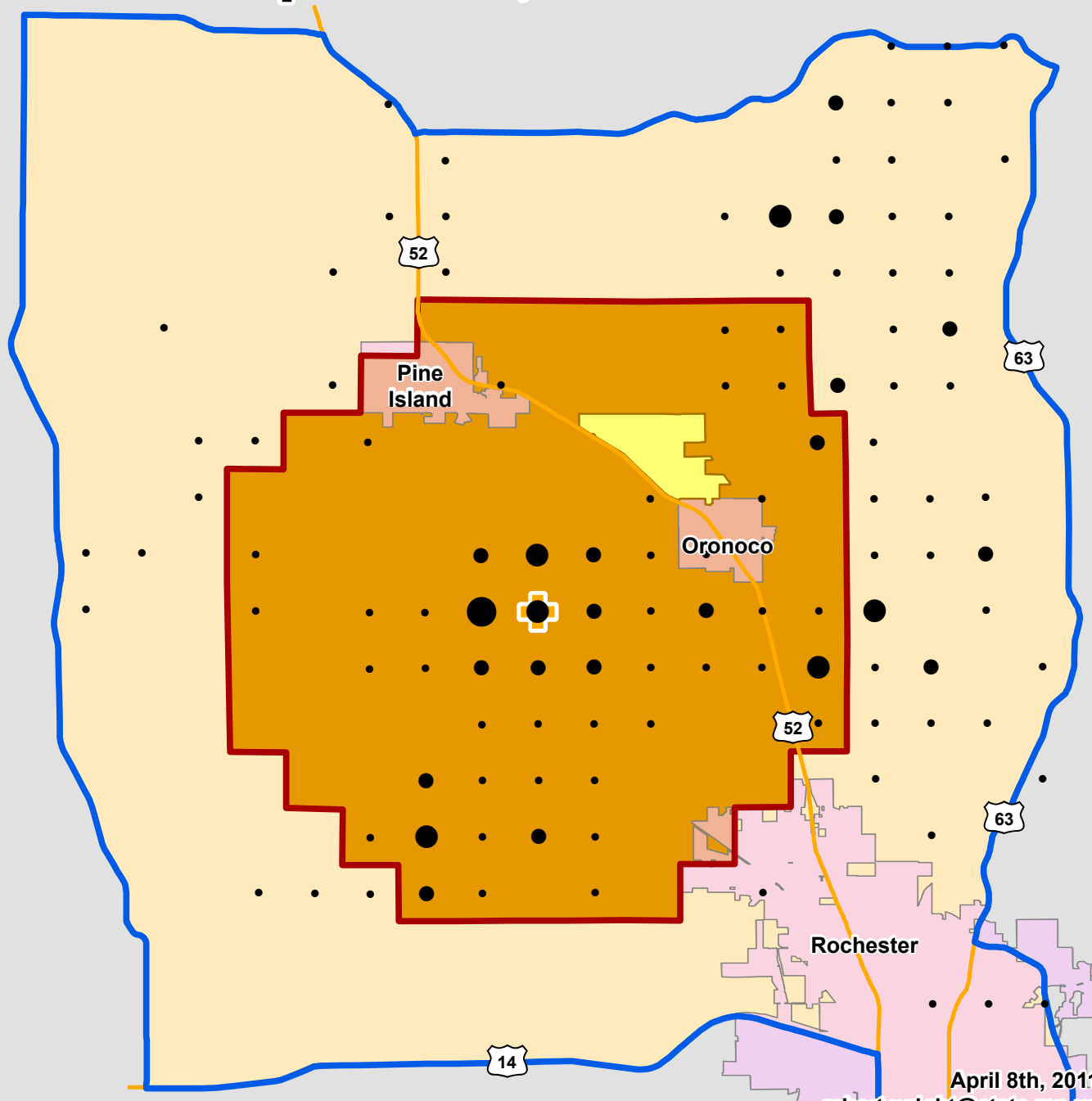
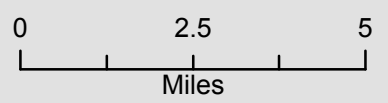
- 1-10
- 11-20
- 21-30
- 31-43

Reference Information

- CWD-Positive Deer (2010)
- CWD-Positive Elk Farm

Winter 2011 CWD Sampling

- Surveillance Area
- Core Area



April 8th, 2011
robert.wright@state.mn.us

