

A Publication of the
**National Wildfire
Coordinating Group**

**NATIONAL INTERAGENCY
INCIDENT MANAGEMENT SYSTEM**

Sponsored by
United States
Department of Agriculture

United States
Department of the Interior

National Association of
State Foresters

**WILDLAND FIRE QUALIFICATION
SUBSYSTEM GUIDE**



**PMS 310-1
NFES 1414**

March 1999

NATIONAL INTERAGENCY INCIDENT
MANAGEMENT SYSTEM

WILDLAND AND PRESCRIBED FIRE
QUALIFICATION SYSTEM GUIDE

PMS 310-1

Prepared by

National Wildfire Coordinating Group
Incident Operations Standards Working Team

1999

Sponsored for NWCG publication by the Incident Operations Standards Working Team, March 1999.

Additional copies may be ordered from: National Interagency Fire Center, ATTN: Great Basin Cache Supply Office, 3833 S. Development Ave., Boise ID 83705. Order NFES #1414.

EXECUTIVE SUMMARY

Background

The following summarizes the 1999 revision of the Wildland and Prescribed Fire Qualification System Guide PMS 310-1, and identifies major changes between the 1993 and 1999 guides. The process for this version began in 1997. This revision involved field review; solicitation of comments from state and federal agencies under the NWCG umbrella; the combined efforts of the Training Working Team, the Fire Use Working Team and the Incident Operations Standards Working Team. Through three drafts over two year's time, these efforts have resulted in the interim guide for the 1999 field season.

Objectives

- Establish minimum interagency training and qualification standards for wildland and prescribed fire assignments.
- Retain the foundation of the performance based system established and implemented in the 1993 version of this guide.
- Strengthen the training and qualification standards of those positions identified in: agency reviews; as a result of national studies; issues related to fireline safety; and as a result of Subject Matter Expert (SME) input during curricula development and this revision process.
- Hold to a minimum of required training and allow for the development of skills and knowledge outside of the formal classroom environment.
- Address the confusion associated with the term "Suggested Training."
- Eliminate redundancy, unnecessary positions and requirements.
- Simplify and combine multiple qualification documents to provide ease of use for field users.

Although not an objective of the PMS 310-1 revision, the Wildland Fire Qualification System, National Training Curriculum, has been developed to further aid users with the application and administration of the system.

Major Changes

- PMS 310-1, parts 1 and 2, have been combined. This has resulted in prescribed fire positions being placed in the appropriate functional area and a combining of certain suppression and prescribed fire positions.
- PMS 330-1, the Task Book Administrator's Guide, has been discontinued and the text added to PMS 310-1 as an appendix. This puts all of the information pertaining to the Qualification System under one cover.
- Some course requirements, particularly those essential to providing safe incident operations, have been added. This is in response to: agency and state comments; recommendations from ad hoc committees formed as a result of issues raised in the Federal Fire Policy Review; the findings of the TriData Corporation's study of firefighter safety; and interagency SME review and input.
- In some instances requirements have actually been lowered, if in doing so, the standard for safe and efficient operations could be maintained. The focus of all efforts has been to keep required courses to a minimum.
- The category previously known as "Suggested Training" has been deleted and identified as the "Knowledge and Skills Needed" to perform satisfactorily in a position. This provides clarification that users can obtain the necessary knowledge and skills for a position through identified curricula and/or a variety of other forums. Additionally, clarification text has been added to the PMS 310-1.

Although not a major change, direction on the Fire Behavior Analyst, the Prescribed Fire Behavior Analyst, and the qualification standards for those positions remain an issue. The standards in this revision will reflect those that were contained in the 1993 and 1995 versions of parts 1 and 2, pending resolution.

Guidance

With the publication of this edition of PMS 310-1 the standards established in this guide are to be met by all participating agencies. Individuals who have begun the process of qualifying for a position under the 1993 edition can continue to use those standards as long as they complete the process within three years from initiation.

Specifically, any 1993 Position Task Book initiated prior to December 31, 1999 and completed by December 31, 2002 will be accepted. Additionally, any individual who has begun the evaluation process need not take any newly required course(s) for that position.

In order to provide the NWCG users the opportunity to use and implement this revision as planned, this guide is being published as interim direction for the 1999 field season. This will provide administrators and local units the opportunity to judge clarity and ease of application.

Comments on inherent flaws in structure and application must be made through the appropriate agency official to the IOSWT no later than September 30, 1999.

Summary Charts

The charts on the following three pages provide an overview of the changes in qualifications between the 1993 and the 1999 guides:

Required Training: Displays any additions or deletions to required training by position, the number of hours added or deleted, and course number.

Prerequisite Experience: Displays by position, any change in prerequisite experience from the 1993 version of the PMS 310-1, to the 1999 version of the PMS 310-1.

Added/Deleted Positions: Displays those positions that have been added or deleted to the 1999 guide.

REQUIRED TRAINING	+	-
Position	added (hours)	deleted (hours)
Area Commander	S-620(32)	
Incident Commander Type 2	S-420(32)	
Incident Commander Type 5	PMS 427(4)	
Information Officer Type 1	S-520(80)	
Information Officer Type 2	S-420(32)	
Operations Section Chief Type 1	S-430(16), S-420(32)	
Division Group Supervisor	S-339(20)	
Task Force Leader		S-330(24), S-390(16)
Strike Team Leader Crew	S-205(28)	
Crew Representative	S-205(28)	
Single Resource Boss Crew	S-230(24)	
Single Resource Boss Dozer	S-230(24), S-232(16), S-205(28)	
Single Resource Boss Felling	S-230(24), S-212(28)	
Single Resource Boss Firing	S-230(24), S-234(24)	
Single Resource Boss Engine	S-230(24), S-231(8), S-205(28)	
Single Resource Boss Tractor/Plow	S-230(24), S-233(12), S-205(28)	
Advanced Firefighter/Squad Boss	S-131(8)	
Area Command Aviation Coordinator	S-620(32)	
Helicopter Manager		S-290(32)
Assistant Area Commander, Planning	S-620(32)	
Planning Section Chief Type 2	S-420(32)	
Prescribed Fire Behavior Analyst	S-390(16), S-492(36), S-493(36)	
Prescribed Fire Behavior Specialist		S-390(16)
Prescribed Fire Behavior Monitor		S-290(32)
Assistant Area Commander, Logistics	S-620(32)	
Logistics Section Chief Type 2	S-420(32)	
Food Unit Leader	S-357(32)	
Finance/Admin. Section Chief Type 2	S-420(32)	
Supervisory Dispatcher		S-190(6)

PREREQUISITE EXPERIENCE

Position	1993	1999
Area Commander	ICT1	ACPC or ACLC
Incident Commander Type 5		FFT1
Safety Officer Type 3		any STL or ICT4
Liaison Officer	ICT3	None
Interagency Resource Representative	None	CREP
Fire Use Manager		RXB1
Division Group Supervisor	TFLD or any STL + ICT4	TFLD
Task Force Leader	any SRB + ICT4	any STL
Area Command Aviation Coordinator		AOBD
Helicopter Manager	HECM + FFT1	HECM + ICT4
Helicopter Coordinator	HEMG	HEMG + TFLD
Deck Coordinator		TOLC
Take-off and Landing Coordinator		ABRO
Aircraft Base Radio Operator		HECM
Assistant Area Commander, Planning	PSC1	any Type 1 General Staff Position
Assistant Area Commander, Logistics	LSC1	any Type 1 General Staff Position
Situation Unit Leader	TFLD or any STL + ICT4	any STL
Training Specialist	TFLD or any STL or any Planning Unit Leader	None
Prescribed Fire Behavior Analyst	FBAN or RXFS + RXI2	FBAN or FOBS + any SRB
Fire Effects Monitor		FFT2
Communications Unit Leader	INCM	INCM + COMT
Procurement Unit Leader	EQTR	None

ADDED/DELETED POSITIONS		
Position	+ added	- deleted
Incident Commander Type 5	X	
Safety Officer Type 3	X	
Fire Use Manager	X	
Area Command Aviation Coordinator	X	
Prescribed Fire Monitor	X	
Incident Communications Technician	X	
Radio Operator	X	
Deck Coordinator	X	
Take-off and Landing Coordinator	X	
Aircraft Base Radio Operator	X	
Prescribed Fire Ignition Specialist Type 1 ¹		X
Prescribed Fire Ignition Specialist Type 2 ¹		X
Prescribed Fire Behavior Specialist		X
Prescribed Fire Behavior Monitor ²		X

¹These two positions have been deleted and combined into Single Resource Boss Firing position. The tasks have been combined with those in the Single Resources Boss Firing position task book.

²This position has been deleted and combined with Field Observer position. The tasks have been combined into the Field Observer position task book.

CONTENTS

Section	Page
Executive Summary.....	i
Contents.....	vii
A. Introduction.....	1
B. Description of the System.....	2
C. Certification and Re-certification.....	6
D. Currency Requirements.....	7
E. Required Training/Prerequisite Experience.....	7
F. Knowledge and Skills Needed.....	7
G. Fitness Standards.....	8
H. Incident Complexity.....	9
I. Review and Update of the Qualification System Guide.....	9
J. Position Categories.....	10
K. Type 1 & Type 2 Incident Management Teams.....	12
L. ICS, Skill and Expanded Dispatch Position Qualifications	
Command and Staff.....	13
Operations Section.....	23
Planning Section.....	39
Logistics Section.....	46
Finance/Administration Section.....	56
Expanded Dispatch Section.....	62
Appendices	
A. Position Task Book Administration.....	A-1
B. Qualification Flow Charts: ICS, Skill and Expanded Dispatch.....	B-1
C. Training Courses: ICS, Skill, Prescribed Fire, Dispatch, Job Aids.....	C-1
D. Glossary.....	D-1

WILDLAND AND PRESCRIBED FIRE QUALIFICATION SYSTEM

A. INTRODUCTION

The Wildland and Prescribed Fire Qualification System Guide (PMS 310-1), developed under the sponsorship of the National Wildfire Coordinating Group (NWCG), provides guidance to participating agencies and organizations. This guidance is given for the establishment of minimum standards for wildland firefighting and prescribed fire personnel.

Personnel who are certified in a position prior to the implementation of this revision, may retain certification at the discretion of their agency. To qualify in any other position, the individual must meet the standards identified herein.

This system is designed to:

1. Establish minimum interagency training, skills, knowledge, experience and physical fitness standards for wildland and prescribed fire positions **which all participating agencies have agreed to meet for national mobilization purposes.** Standards may be augmented to meet specific needs within an agency, but the augmentation cannot be imposed by an agency on its cooperators meeting the minimums outlined in this guide.

2. For wildland fire: Allow cooperating agencies to jointly agree upon training, knowledge and skills, experience and physical fitness standards required to meet fire management needs.

3. For prescribed fire: Establish minimum qualifications for personnel involved in burns which are of moderate complexity or higher (see section G, "Fitness Standards") and on which resources of more than one agency are utilized. **For burns of low complexity agency and local cooperators determine qualifications.**

Personnel mobilized beyond their geographic area must meet the established qualification standards in this guide. Any organization or agency providing resources to fill national interagency requests for incidents or multi-agency prescribed fires of moderate or higher complexity will be expected to meet the minimum national requirements described in this guide.

PMS 310-1 recognizes the ability of cooperating agencies at the local level to jointly define certification and qualification standards. Agencies dealing with other than wildland and prescribed fire incidents may want to consider using PMS 310-1

guidelines as the framework for establishing certification and qualifications.

B. DESCRIPTION OF THE SYSTEM

The Wildland and Prescribed Fire Qualification System is a "performance based" qualification system. In this system, the primary criterion for qualification is individual performance as observed by an evaluator certified in that position; using approved standards outlined in Appendix A, Position Task Book Administration, of this guide; and documented in an approved position task book.

In a performance based system:

. Qualification is based upon demonstrated performance as measured on wildland fires, prescribed fires, other incidents, normal job activities, in simulated exercises or classroom activities.

. Personnel who have learned skills from sources other than actual performance on wildland and prescribed fires or NWCG curricula, such as agency specific training programs (structural fire, law enforcement, search and rescue, etc.), may not be required to complete specific courses in order to qualify in an NWCG position.

1. The components of the wildland and prescribed fire qualification system are as follows:

a. Position Task Books (PTB) contain all critical tasks which are required to perform the job. The tasks in each PTB have been established by experts from all NWCG agencies and geographical areas of the United States, tested and approved by NWCG. PTBs are in a format which allows documentation of a trainee's ability to perform each task. Tasks pertaining to tactical decision making and safety are flagged and require position performance on a wildland and/or prescribed fire. Remaining tasks may be evaluated through other means such as simulation, or other emergency and non-emergency work. Successful completion of all required tasks of the position, as determined by an evaluator(s), will be the basis for recommending certification.

The following positions utilize the same PTB for the Type 1 and Type 2 levels (ICT1/2, PSC1/2, OSC1/2, LSC1/2, FSC1/2, SOF1/2, IOF1/2, HEB1/2, RXM1/2, RXB1/2). For those positions having the same PTB, the trainee will be required to obtain and complete an

initiated PTB for each complexity level.

Example: A trainee completes a PTB for ICT2, receives certification from the home unit and becomes qualified in that position. When the home unit makes a determination that the individual, with adequate experience and required training, is ready for advancement to the ICT1 position, the home unit initiates a new ICT1/2 PTB. Crossing out ICT2 on the PTB cover identifies that the trainee is now working to complete the ICT1 position task book.

IMPORTANT NOTE: Trainee requirements include completion of all required training courses and prerequisite experience prior to obtaining an initiated PTB. The only exceptions are those Command and General Staff positions that include S-420, S-520, and S-620 as required training. PTBs and the qualification process can be initiated for those positions prior to attendance and completion of these three courses. This will allow trainees to gain experience that will prepare them for passing these advanced courses.

Training courses or job aids identified as knowledge and skills needed (see Section F, "Knowledge and Skills Needed") contain the knowledge and skills required of a position. An individual should not be given a position performance assignment if additional knowledge and skills required to perform the tasks of a position are not first obtained, either through formal training or other methods.

b. Training courses provide the specific knowledge and skills required to perform tasks identified in the PTB. This provides a direct link between training and job performance. Required training has been held to the minimum required to provide for safe operations on wildland and prescribed fires. Although most training courses are not "required," all courses are available and considered to be a primary means by which personnel can prepare for position performance evaluation.

c. Job Aids exist to facilitate development where there is no developed training course and to provide a ready reference for performance on the job. Individuals must possess the knowledge and skills to perform job aid tasks.

d. Agency Certification and documentation is the responsibility of the employing agency certifying that the individual is qualified to perform in a specific position. Individuals are responsible for providing proof of qualification on an incident. Proof of qualification is not required for the

following positions: Advanced Firefighter/Squad Boss (FFT1), Firefighter (FFT2), Helicopter Crewmember (HECM), Display Processor (DPRO), Status/Check-In Recorder (SCKN), Personnel Time Recorder (PTRC), Equipment Time Recorder (EQTR) and Radio Operator (RADO). It is the responsibility of each agency to document those qualified in these positions.

2. Responsibilities

Each agency is responsible for selecting trainees, ensuring proper use of position task books (see Appendix A), and certification of trainees.

The individual is responsible for completing training courses, completing the appropriate PTB, and showing proof of qualifications on an incident.

The incident training and qualification process on wildland or prescribed fire incidents is the responsibility of the local hosting agency. Documentation of training and experience for contractors is the responsibility of the contractor (see below in Section C, "Certification and Re-certification").

The Certification Flow Chart on the following page provides an overview of the qualification and certification process. For more specific information concerning roles and responsibilities, task book administration, and application of the qualification and certification process, see Appendix A of this guide.

CERTIFICATION FLOW CHART



This illustration is a simple representation of the position certification process.

C. CERTIFICATION AND RE-CERTIFICATION

Each agency is responsible for certifying qualifications of its personnel based upon the requirements of this guide and agency specific requirements supplementing this guide. This responsibility includes evaluation of personnel for re-certification in cases where position qualifications have been lost as a result of a lack of current experience.

A key component in the certification or re-certification process is the subjective evaluation by the appropriate agency official of an individual's capability to perform in a position.

Completion of required training and experience requirements alone does not guarantee that an individual is qualified to perform in a position.

The quality of experiences gained in a given position should be closely evaluated when making a determination for advancement to the next higher position, to a different position, or for re-certification. The quality of experience may relate to the number of fuel types in which an individual has performed, size of the incident in terms of personnel and equipment, the number of assignments, or complexity of operations to include the different types of resources managed.

This guide recommends that more than one trainee assignment be experienced before certification; and that more than one assignment be experienced after completing the PTB and receiving certification before an individual begins movement to the next higher level. When re-certification is necessary due to a lack of currency, it is recommended that the individual experience a minimum of three operational periods, under the supervision of an evaluator, before re-certification is granted.

However, certification and re-certification is a determination that each individual agency must make based on task evaluations, position performance evaluations and their own judgement of the quality of an individual's experience.

Agencies shall **not** certify private contractors except where formal agreements are in place. Clauses in contracts are to include stipulations that specify the service provider must meet the standards found in this guide.

D. CURRENCY REQUIREMENTS

For the positions identified in this guide, the maximum time allowed for maintaining currency is three (3) years for air operations and expanded dispatch positions and five (5) years for all others.

Currency can be maintained in the following ways:

1. By successful performance in the position qualified for within the given time frame.

2. By successful performance in a higher position(s) for which that position is a prerequisite, providing the individual was previously qualified in that position.

3. By successful performance in a position that is identified in this guide (see Section L, "ICS, Skill and Expanded Dispatch Position Qualifications") as OTHER POSITION ASSIGNMENTS THAT WILL MAINTAIN CURRENCY.

Example: Currency for a Resources Unit Leader can be maintained by successful performance as a Resources Unit Leader within five years; by successful performance as a Planning Section Chief Type 2 within five years; by successful performance as a Demobilization Unit Leader or Status/Check-In Recorder within five years.

E. REQUIRED TRAINING/PREREQUISITE EXPERIENCE

Required training (as identified in Section L and Appendix C of this guide) and prerequisite experience cannot be challenged. The process of demonstrating the abilities to perform the position is the completion of a position task book. Agency equivalent courses may be substituted for required courses when learning and performance objectives meet or exceed required course learning and performance objectives.

F. KNOWLEDGE AND SKILLS NEEDED

Knowledge and skills needed are training courses or job aids (as identified in Section L and Appendix C of this guide) which can help to support a position performance assignment. The knowledge and skills required to perform the tasks of a position are provided in the identified courses, but may also be acquired in a variety of ways, including on-the-job training, work experience, and identified formal training as determined by one's agency.

An individual must have an opportunity to acquire the knowledge and skills required to perform the tasks of a position before accepting a position performance assignment. It is the responsibility of the individual agency to ensure that each trainee has the opportunity to acquire the knowledge and skills necessary for position performance.

G. FITNESS STANDARDS

Personnel must meet established physical fitness standards for wildland and prescribed fire assignments (see Section L for the physical fitness category of a particular position). Agencies have the latitude to determine the method of evaluating the physical fitness level of their personnel. However, it should be a measurable evaluation process.

The following four categories of physical fitness have been established:

1. Arduous. Duties involve field work requiring physical performance calling for above-average endurance and superior conditioning. These duties may include an occasional demand for extraordinarily strenuous activities in emergencies under adverse environmental conditions and over extended periods of time. Requirements include running, walking, climbing, jumping, twisting, bending and lifting more than 50 pounds; the pace of work typically is set by the emergency situation.

2. Moderate. Duties involve field work requiring complete control of all physical faculties and may include considerable walking over irregular ground, standing for long periods of time, lifting 25 to 50 pounds, climbing, bending, stooping, squatting, twisting and reaching. Occasional demands may be required for moderately strenuous activities in emergencies over long periods of time. Individuals usually set their own work pace.

3. Light. Duties mainly involve office type work with occasional field activity characterized by light physical exertion requiring basic good health. Activities may include climbing stairs, standing, operating a vehicle and long hours of work, as well as some bending, stooping or light lifting. Individuals almost always can govern the extent and pace of their physical activity.

4. None. Duties are normally performed in a controlled environment, such as an incident base or camp.

For any position identified in this guide with a fitness level of "None" or any technical specialist positions who have the need to be on the fireline for non-suppression tasks, the required fitness level shall be "Light."

H. INCIDENT COMPLEXITY

There are many factors that determine incident complexity: size, location, threat to life and property, political sensitivity, organizational complexity, jurisdictional boundaries, values to be protected, fuel type, topography, agency policy, etc.

Incident complexity is identified by Types 1-5. For example, a Type 5 incident is characterized by relatively few resources, is of short duration, and has few of the complicating factors identified above. A Type 1 incident, on the other hand, has large numbers of resources and many of the complicating factors identified above.

The agency administrator or designated representative must determine the complexity of an incident and assign qualified personnel as needed. In situations where multiple agencies and jurisdictions are involved, the determination of complexity and qualifications should be made jointly.

For prescribed fire, a NWCG Complexity Guide has been developed. This guide, Prescribed Fire Complexity Guide (PMS-424, NFES 2474), is an aid for use in this process, although agencies can develop their own specific determination procedures. For burns evaluated to have low complexity, the agency and its local cooperators will jointly agree on qualifications required. An agency can also establish its own qualifications for higher complexity burns where the resources of other agencies are not utilized. For burns which are of moderate complexity or higher and on which resources of more than one agency are utilized, the minimum qualifications established in this guide are required.

I. REVIEW AND UPDATE OF THE QUALIFICATION SYSTEM GUIDE

To keep the Wildland and Prescribed Fire Qualification System Guide current, it is necessary to make revisions. This process requires users to submit proposed revisions through the appropriate agency official to the NWCG Incident Operations Standards Working Team (IOSWT).

The IOSWT will annually review comments received and determine the need for revision. While the IOSWT may address special problems at any time, the planned revision will occur at least

every five (5) years. Users may submit, through the appropriate agency official, proposed revisions as needs are identified. All NWCG agencies will be requested to review and provide input to the established revision process. The IOSWT will review the proposals, consult with subject matter experts, other NWCG working teams as appropriate, and recommend adoption or rejection by NWCG.

J. POSITION CATEGORIES

Non-operations personnel who have the need to be on the fireline for non-suppression tasks must have the knowledge and skills found in Standards for Survival, or must be accompanied by someone qualified to be on the fireline.

Four types of positions are identified in this guide:

1. ICS Positions. Any position found on the ICS organizational chart in the Operational System Description (OSD), PMS 120-1. Training may include required courses and "I" courses, "S" courses and "J" Job aids that are classified as knowledge and skills needed.

Following is a listing of all ICS positions:

ICS POSITIONS AND MNEMONICS

Agency Representative (AREP)	Division/Group Supervisor (DIVS)
Air Operations Branch Director(AOBD)	Documentation Unit Leader (DOCL)
Air Support Group Supervisor (ASGS)	Equipment Manager (EQPM)
Air Tactical Group Supervisor (ATGS)	Equipment Time Recorder (EQTR)
Air Tanker/Fixed Wing Coordinator (ATCO)	Facilities Unit Leader (FACL)
Aircraft Base Radio Operator (ABRO)	Field Observer (FOBS)
Area Commander (ACDR)	Finance/Administration Section Chief Type 1 (FSC1)
Area Command Aviation Coordinator (ACAC)	Finance/Administration Section Chief Type 2 (FSC2)
Assistant Area Commander, Logistics (ACLC)	Food Unit Leader (FDUL)
Assistant Area Commander, Plans (ACPC)	Ground Support Unit Leader (GSUL)
Base/Camp Manager (BCMG)	Helibase Manager (4+)(HEB1)
Claims Specialist (CLMS)	Helibase Manager (1-3)(HEB2)
Commissary Manager (CMSY)	Helicopter Coordinator (HLCO)
Communications Unit Leader (COML)	Helicopter Crewmember (HECM)
Compensation/Claims Unit Leader (COMP)	Helicopter Manager (HEMG)
Compensation-for-Injury Specialist (INJR)	Incident Commander Type 1 (ICT1)
Cost Unit Leader (COST)	Incident Commander Type 2 (ICT2)
Deck Coordinator (DECK)	Incident Commander Type 3 (ICT3)
Demobilization Unit Leader (DMOB)	Incident Commander Type 4 (ICT4)
Display Processor (DPRO)	Incident Commander Type 5 (ICT5)
	Incident Communications Center Manager (INCM)
	Incident Communications Technician (COMT)

Interagency Resource Representative (IARR)	Receiving/Distribution Manager (RCDM)
Information Officer Type 1 (IOF1)	Resources Unit Leader (RESL)
Information Officer Type 2 (IOF2)	Safety Officer (SOF1)
Information Officer Type 3 (IOF3)	Safety Officer (SOF2)
Liaison Officer (LOFR)	Safety Officer (SOF3)
Logistics Section Chief Type 1 (LSC1)	Security Manager (SECM)
Logistics Section Chief Type 2 (LSC2)	Service Branch Director (SVBD)
Medical Unit Leader (MEDL)	Situation Unit Leader (SITL)
Operations Branch Director (OPBD)	Staging Area Manager (STAM)
Operations Section Chief Type 1 (OSC1)	Status/Check-In Recorder (SCKN)
Operations Section Chief Type 2 (OSC2)	Strike Team Leader Crew (STCR)
Ordering Manager (ORDM)	Strike Team Leader Dozer (STDZ)
Personnel Time Recorder (PTRC)	Strike Team Leader Engine (STEN)
Planning Section Chief Type 1 (PSC1)	Strike Team Leader Tractor/Plow (STPL)
Planning Section Chief Type 2 (PSC2)	Supply Unit Leader (SPUL)
Procurement Unit Leader (PROC)	Support Branch Director (SUBD)
Radio Operator (RADO)	Take-Off and Landing Coordinator (TOLC)
	Task Force Leader (TFLD)
	Time Unit Leader (TIME)

2. Wildland Fire Skill Positions. These positions have been identified as unique to wildland fire suppression because they require a level of knowledge and skills to perform wildland fire suppression duties and were not identified in the Operational System Description. Personnel shall be assigned only to positions for which they are certified.

The following is a listing of all wildland fire skill positions:

SKILL POSITIONS AND MNEMONICS

Wildland Fire Skill Positions

Advanced Firefighter/Squad Boss (FFT1)	Firefighter (FFT2)
Crew Representative (CREP)	Fire Behavior Analyst (FBAN)
Crew Boss (Single Resource) (CRWB)	Infrared Interpreter (IRIN)
Dozer Boss (Single Resource) (DOZB)	Tractor/Plow Boss (Single Resource) (TRPB)
Engine Boss (Single Resource) (ENGB)	Training Specialist (TNSP)
Felling Boss (Single Resource) (FELB)	
Firing Boss (Single Resource) (FIRB)	

Expanded Dispatch Skill Positions

Coordinator (CORD)	Supervisory Dispatcher (EDSP)
Dispatch Recorder (EDRC)	Support Dispatcher (EDSD)

3. Technical Specialist Positions. Technical specialists are personnel with unique skills. These specialists may be used anywhere within the incident organization. No minimum qualifications are identified in this guide. Most technical specialists are certified in their field or profession. To orient technical specialists, it is suggested that the knowledge

and skills from the following training courses be reviewed:

- . Introduction to ICS (I-100)
- . Wildland Fire Suppression Orientation for Non-Operations Personnel (S-110)

For titles and mnemonics of identified technical specialists see the National Interagency Mobilization Guide (NFES 2091).

4. Fire Use Skill Positions - One or more of the following positions may be needed for the successful use of wildland and prescribed fire to achieve land management objectives. They require a level of specific skill and knowledge. Personnel shall be assigned only to positions in which they are certified.

Following is a listing of all wildland fire use skill positions:

Fire Use Skill Positions

Fire Use Manager (FUMA)	Prescribed Fire Manager Type 1
Fire Effects Monitor (FEMO)	(RXM1)
Prescribed Fire Behavior Analyst (RXFA)	Prescribed Fire Manager Type 2
	(RXM2)

Following is a listing of fire use skill positions certified by fuel group as defined in the evaluation section of the PTBs:

Fire Use Skill Positions - Certified by Fuel Group

Prescribed Fire Burn Boss Type 1 (RXB1)
Prescribed Fire Burn Boss Type 2 (RXB2)

K. TYPE 1 & TYPE 2 INCIDENT MANAGEMENT TEAMS

To become eligible for participation on a Type 1 team, any person filling a team position as the Incident Commander, Safety Officer, Information Officer or general staff must complete, as established in this guide, the Advanced Incident Management(S-520) training course.

To become eligible for participation on a Type 2 team, any person filling a team position as the Incident Commander, Safety Officer, Information Officer or general staff must complete, as established in this guide, the Command and General Staff (S-420) training course.

An individual, having successfully completed the S-420 or S-520 course, does not need to re-attend for the purpose of changing functions on a team at the appropriate level - such change will be governed by meeting the requirements of the applicable position task book and receiving agency certification.

L. ICS, SKILL AND EXPANDED DISPATCH POSITION QUALIFICATIONS

COMMAND AND STAFF

AREA COMMANDER (ACDR)

<u>REQUIRED TRAINING</u>	Area Command (S-620)
<u>KNOWLEDGE AND SKILLS NEEDED</u>	None
<u>PREREQUISITE EXPERIENCE</u>	Satisfactory performance as an Assistant Area Commander Planning or Logistics + Satisfactory position performance as an Area Commander on a wildland fire incident
<u>PHYSICAL FITNESS</u>	None
<u>OTHER POSITION ASSIGNMENTS THAT WILL MAINTAIN CURRENCY</u>	Assistant Area Commander Planning Assistant Area Commander Logistics

INCIDENT COMMANDER TYPE 1 (ICT1)

<u>REQUIRED TRAINING</u>	Advanced Incident Management (S-520)
<u>KNOWLEDGE AND SKILLS NEEDED</u>	None
<u>PREREQUISITE EXPERIENCE</u>	Satisfactory performance as an Incident Commander Type 2 + Satisfactory position performance as an Incident Commander Type 1 on a wildland fire incident
<u>PHYSICAL FITNESS</u>	None
<u>OTHER POSITION ASSIGNMENTS THAT WILL MAINTAIN CURRENCY</u>	Finance/Administration Section Chief Type 1 Logistics Section Chief Type 1 Operations Section Chief Type 1 Planning Section Chief Type 1

COMMAND AND STAFF

INCIDENT COMMANDER TYPE 2 (ICT2)

<u>REQUIRED TRAINING</u>	Command and General Staff (S-420)
<u>KNOWLEDGE AND SKILLS NEEDED</u>	Advanced ICS (I-400) Incident Commander (S-400)
<u>PREREQUISITE EXPERIENCE</u>	Satisfactory performance as an Incident Commander Type 3 + Satisfactory performance as an Operations Section Chief Type 2 + Satisfactory position performance as an Incident Commander Type 2 on a wildland fire incident <u>OR</u> Satisfactory performance as an Incident Commander Type 3 + Satisfactory performance as a Planning Section Chief Type 2 + Satisfactory position performance as an Incident Commander Type 2 on a wildland fire incident <u>OR</u> Satisfactory performance as an Incident Commander Type 3 + Satisfactory performance as a Logistics Section Chief Type 2 + Satisfactory position performance as an Incident Commander Type 2 on a wildland fire incident <u>OR</u> Satisfactory performance as an Incident Commander Type 3 + Satisfactory performance as a Finance/Administration Section Chief Type 2 + Satisfactory position performance as an Incident Commander Type 2 on a wildland fire incident
<u>PHYSICAL FITNESS</u>	None
<u>OTHER POSITION ASSIGNMENTS THAT WILL MAINTAIN CURRENCY</u>	Logistics Section Chief Type 2 Planning Section Chief Type 2 Finance/Administration Section Chief Type 2 Operations Section Chief Type 2

INCIDENT COMMANDER TYPE 3 (ICT3)

<u>REQUIRED TRAINING</u>	None
<u>KNOWLEDGE AND SKILLS NEEDED</u>	Incident Commander Extended Attack (S-300)
<u>PREREQUISITE EXPERIENCE</u>	Satisfactory performance as an Incident Commander Type 4 + Satisfactory performance as a Task Force Leader + Satisfactory position performance as an Incident Commander Type 3 on a wildland fire incident
<u>PHYSICAL FITNESS</u>	Arduous
<u>OTHER POSITION ASSIGNMENTS THAT WILL MAINTAIN CURRENCY</u>	Task Force Leader Burn Boss Type 1

INCIDENT COMMANDER TYPE 4 (ICT4)

<u>REQUIRED TRAINING</u>	Fire Operations In the Urban Interface (S-205)
<u>KNOWLEDGE AND SKILLS NEEDED</u>	Initial Attack Incident Commander (S-200) Firing Methods and Procedures (S-234)
<u>PREREQUISITE EXPERIENCE</u>	Satisfactory performance as a Single Resource Boss (Crew, Dozer, Engine, Tractor/Plow) + Satisfactory performance as an Incident Commander Type 4 on a wildland fire incident.
<u>PHYSICAL FITNESS</u>	Arduous
<u>OTHER POSITION ASSIGNMENTS THAT WILL MAINTAIN CURRENCY</u>	Single Resource Boss (Crew, Dozer, Engine, Tractor/Plow) Burn Boss Type 2

COMMAND AND STAFF

INCIDENT COMMANDER TYPE 5 (ICT5)

<u>REQUIRED TRAINING</u>	"Look Up, Look Down, Look Around"(PMS 427)
<u>KNOWLEDGE AND SKILLS NEEDED</u>	Intermediate Wildland Fire Behavior(S-290)
<u>PREREQUISITE EXPERIENCE</u>	Satisfactory performance as an Advanced Firefighter/Squad Boss + Satisfactory Performance as an Incident Commander Type 5 on a wildland fire incident.
<u>PHYSICAL FITNESS</u>	Arduous
<u>OTHER POSITION ASSIGNMENTS THAT WILL MAINTAIN CURRENCY</u>	Advanced Firefighter/Squad Boss (FFT1)
<u>The ICT5 position is not prerequisite to the NWCG Incident Commander Type 4 (ICT4) position.</u>	

SAFETY OFFICER TYPE 1 (SOF1)

<u>REQUIRED TRAINING</u>	Advanced Incident Management (S-520)
<u>KNOWLEDGE AND SKILLS NEEDED</u>	None
<u>PREREQUISITE EXPERIENCE</u>	Satisfactory performance as a Safety Officer Type 2 + Satisfactory performance as an Operations Section Chief Type 2 + Satisfactory position performance as a Safety Officer Type 1 on a wildland fire incident
<u>PHYSICAL FITNESS</u>	Moderate
<u>OTHER POSITION ASSIGNMENTS THAT WILL MAINTAIN CURRENCY</u>	Operations Section Chief Type 2 Safety Officer Type 2

SAFETY OFFICER TYPE 2 (SOF2)

<u>REQUIRED TRAINING</u>	Command and General Staff (S-420)
<u>KNOWLEDGE AND SKILLS NEEDED</u>	Advanced ICS (I-400) Safety Officer (S-404)
<u>PREREQUISITE EXPERIENCE</u>	Satisfactory performance as a Division/Group Supervisor + Satisfactory position performance as a Safety Officer Type 2 on a wildland fire incident
<u>PHYSICAL FITNESS</u>	Moderate
<u>OTHER POSITION ASSIGNMENTS THAT WILL MAINTAIN CURRENCY</u>	Division/Group Supervisor

SAFETY OFFICER TYPE 3 (SOF3)

<u>REQUIRED TRAINING</u>	None
<u>KNOWLEDGE AND SKILLS NEEDED</u>	Intermediate ICS (I-300)
<u>EXPERIENCE</u>	Satisfactory performance as Strike Team Leader + Satisfactory position performance as a Safety Officer Type 3 on a wildland fire incident <u>OR</u> Satisfactory performance as an Incident Commander Type 4 + Satisfactory position performance as a Safety Officer Type 3 on a wildland fire incident
<u>PHYSICAL FITNESS</u>	Moderate
<u>OTHER POSITION ASSIGNMENTS THAT WILL MAINTAIN CURRENCY</u>	Strike Team Leader Incident Commander Type 4

COMMAND AND STAFF

LIAISON OFFICER (LOFR)

<u>REQUIRED TRAINING</u>	None
<u>KNOWLEDGE AND SKILLS NEEDED</u>	Advanced ICS (I-400) Liaison Officer (S-402)
<u>PREREQUISITE EXPERIENCE</u>	Satisfactory position performance as a Liaison Officer
<u>PHYSICAL FITNESS</u>	None
<u>OTHER POSITION ASSIGNMENTS THAT WILL MAINTAIN CURRENCY</u>	Agency Representative

INFORMATION OFFICER TYPE 1 (IOF1)

<u>REQUIRED TRAINING</u>	Advanced Incident Management (S-520)
<u>KNOWLEDGE AND SKILLS NEEDED</u>	None
<u>PREREQUISITE EXPERIENCE</u>	Satisfactory performance as an Information Officer Type 2 + Satisfactory position performance as an Information Officer Type 1
<u>PHYSICAL FITNESS</u>	None
<u>OTHER POSITION ASSIGNMENTS THAT WILL MAINTAIN CURRENCY</u>	Information Officer Type 2

INFORMATION OFFICER TYPE 2 (IOF2)

<u>REQUIRED TRAINING</u>	Introduction to Wildland Fire Behavior (S-190) Command and General Staff (S-420)
<u>KNOWLEDGE AND SKILLS NEEDED</u>	Leadership and Organizational Development (S-301) Advanced ICS (I-400) Information Officer (S-403)
<u>PREREQUISITE EXPERIENCE</u>	Satisfactory performance as an Information Officer Type 3 + Satisfactory position performance as an Information Officer Type 2
<u>PHYSICAL FITNESS</u>	None
<u>OTHER POSITION ASSIGNMENTS THAT WILL MAINTAIN CURRENCY</u>	None

INFORMATION OFFICER TYPE 3 (IOF3)

<u>REQUIRED TRAINING</u>	None
<u>KNOWLEDGE AND SKILLS NEEDED</u>	Wildland Fire Suppression Orientation for Non-Operations Personnel (S-110) Basic ICS (I-200) Information Officer (S-203)
<u>PREREQUISITE EXPERIENCE</u>	Satisfactory position performance as an Information Officer Type 3
<u>PHYSICAL FITNESS</u>	None
<u>OTHER POSITION ASSIGNMENTS THAT WILL MAINTAIN CURRENCY</u>	None

COMMAND AND STAFF

AGENCY REPRESENTATIVE (AREP)

<u>REQUIRED TRAINING</u>	None
<u>KNOWLEDGE AND SKILLS NEEDED</u>	None
<u>PREREQUISITE EXPERIENCE</u>	Agency specified
<u>PHYSICAL FITNESS</u>	None
<u>OTHER POSITION ASSIGNMENTS THAT WILL MAINTAIN CURRENCY</u>	None

INTERAGENCY RESOURCE REPRESENTATIVE (IARR)

<u>REQUIRED TRAINING</u>	None
<u>KNOWLEDGE AND SKILLS NEEDED</u>	None
<u>PREREQUISITE EXPERIENCE</u>	Satisfactory performance as a Crew Representative
<u>PHYSICAL FITNESS</u>	None
<u>OTHER POSITION ASSIGNMENTS THAT WILL MAINTAIN CURRENCY</u>	Crew Representative

PRESCRIBED FIRE MANAGER TYPE 1 (RXM1)

<u>REQUIRED TRAINING</u>	None
<u>KNOWLEDGE AND SKILLS NEEDED</u>	Intermediate ICS (I-300)
<u>PREREQUISITE EXPERIENCE</u>	Satisfactory performance as a Prescribed Fire Burn Boss Type 1 + Satisfactory position performance as a Prescribed Fire Manager Type 1 on multiple prescribed fires
<u>PHYSICAL FITNESS</u>	Agency established
<u>OTHER POSITION ASSIGNMENTS THAT WILL MAINTAIN CURRENCY</u>	None

PRESCRIBED FIRE MANAGER TYPE 2 (RXM2)

<u>REQUIRED TRAINING</u>	None
<u>KNOWLEDGE AND SKILLS NEEDED</u>	Fire Program Management Intermediate ICS (I-300)
<u>PREREQUISITE EXPERIENCE</u>	Satisfactory performance as a Prescribed Fire Burn Boss Type 2 + Satisfactory position performance as a Prescribed Fire Manager Type 2 on multiple prescribed fires
<u>PHYSICAL FITNESS</u>	Agency established
<u>OTHER POSITION ASSIGNMENTS THAT WILL MAINTAIN CURRENCY</u>	Prescribed Fire Burn Boss Type 1

FIRE USE MANAGER (FUMA)

<u>REQUIRED TRAINING</u>	None
<u>KNOWLEDGE AND SKILLS NEEDED</u>	Advanced Fire Use Applications (S-580)
<u>PREREQUISITE EXPERIENCE</u>	Satisfactory performance as a Prescribed Fire Burn Boss Type 1 + Satisfactory position performance as a Fire Use Manager on a wildland fire incident used to achieve land use objectives
<u>PHYSICAL FITNESS</u>	Moderate
<u>OTHER POSITION ASSIGNMENTS THAT WILL MAINTAIN CURRENCY</u>	None

COMMAND AND STAFF

PRESCRIBED FIRE BURN BOSS TYPE 1 (RXB1)

<u>REQUIRED TRAINING</u>	Advanced Wildland Fire Behavior Calculations (S-490)
<u>KNOWLEDGE AND SKILLS NEEDED</u>	Applied Fire Effects (RX-540) Smoke Management Techniques (RX-450) Fire in Ecosystem Management Fire Program Management
<u>PREREQUISITE EXPERIENCE</u>	Satisfactory performance as a Prescribed Fire Burn Boss Type 2 + Satisfactory performance as an Incident Commander Type 3 + Satisfactory position performance as a Prescribed Fire Burn Boss Type 1 in representative fuel group(s) on a prescribed fire incident
<u>PHYSICAL FITNESS</u>	Agency established
<u>OTHER POSITION ASSIGNMENTS THAT WILL MAINTAIN CURRENCY</u>	Prescribed Fire Burn Boss Type 2

PRESCRIBED FIRE BURN BOSS TYPE 2 (RXB2)

<u>REQUIRED TRAINING</u>	Introduction to Wildland Fire Behavior Calculations (S-390)
<u>KNOWLEDGE AND SKILLS NEEDED</u>	Prescribed Fire Implementation (RX-300) Introduction to Fire Effects (RX-340) Leadership and Organizational Development (S-301)
<u>PREREQUISITE EXPERIENCE</u>	Satisfactory performance a Single Resource Boss Firing + Satisfactory performance as an Incident Commander Type 4 + Satisfactory position performance as a Prescribed Fire Burn Boss Type 2 in representative fuel group(s) on a prescribed fire incident
<u>PHYSICAL FITNESS</u>	Agency established
<u>OTHER POSITION ASSIGNMENTS THAT WILL MAINTAIN CURRENCY</u>	None

OPERATIONS SECTION

OPERATIONS SECTION CHIEF TYPE 1 (OSC1)

<u>REQUIRED TRAINING</u>	Advanced Incident Management (S-520)
<u>KNOWLEDGE AND SKILLS NEEDED</u>	None
<u>PREREQUISITE EXPERIENCE</u>	Satisfactory performance as an Operations Section Chief Type 2 + Satisfactory position performance as an Operations Section Chief Type 1 on a wildland fire incident
<u>PHYSICAL FITNESS</u>	Moderate
<u>OTHER POSITION ASSIGNMENTS THAT WILL MAINTAIN CURRENCY</u>	None

OPERATIONS SECTION CHIEF TYPE 2 (OSC2)

<u>REQUIRED TRAINING</u>	Operations Section Chief (S-430) Command and General Staff (S-420)
<u>KNOWLEDGE AND SKILLS NEEDED</u>	Advanced ICS (I-400)
<u>PREREQUISITE EXPERIENCE</u>	Satisfactory performance as a Division/Group Supervisor + Satisfactory position performance as an Operations Section Chief Type 2 on a wildland fire incident
<u>PHYSICAL FITNESS</u>	Moderate
<u>OTHER POSITION ASSIGNMENTS THAT WILL MAINTAIN CURRENCY</u>	Operations Branch Director

OPERATIONS

OPERATIONS BRANCH DIRECTOR (OPBD)

<u>REQUIRED TRAINING</u>	None
<u>KNOWLEDGE AND SKILLS NEEDED</u>	None
<u>PREREQUISITE EXPERIENCE</u>	Satisfactory performance as an Operations Section Chief Type 2
<u>PHYSICAL FITNESS</u>	Moderate
<u>OTHER POSITION ASSIGNMENTS THAT WILL MAINTAIN CURRENCY</u>	Operations Section Chief Type 2

DIVISION/GROUP SUPERVISOR (DIVS)

<u>REQUIRED TRAINING</u>	Division/Group Supervisor (S-339)
<u>KNOWLEDGE AND SKILLS NEEDED</u>	None
<u>PREREQUISITE EXPERIENCE</u>	Satisfactory performance as a Task Force Leader + Satisfactory position performance as a Division/Group Supervisor on a wildland fire incident
<u>PHYSICAL FITNESS</u>	Arduous
<u>OTHER POSITION ASSIGNMENTS THAT WILL MAINTAIN CURRENCY</u>	None

TASK FORCE LEADER (TFLD)

<u>REQUIRED TRAINING</u>	None
<u>KNOWLEDGE AND SKILLS NEEDED</u>	None
<u>PREREQUISITE EXPERIENCE</u>	Satisfactory performance as a Strike Team Leader (Crew, Dozer, Engine, Tractor/Plow) + Satisfactory position performance as a Task Force Leader on a wildland fire incident
<u>PHYSICAL FITNESS</u>	Arduous
<u>OTHER POSITION ASSIGNMENTS THAT WILL MAINTAIN CURRENCY</u>	Incident Commander Type 3

STRIKE TEAM LEADER TRACTOR/PLOW (STPL)

<u>REQUIRED TRAINING</u>	Task Force/Strike Team Leader (S-330) Introduction to Wildland Fire Behavior Calculations (S-390)
<u>KNOWLEDGE AND SKILLS NEEDED</u>	Intermediate ICS (I-300) Leadership and Organizational Development (S-301)
<u>PREREQUISITE EXPERIENCE</u>	Satisfactory performance as a Single Resource Boss Tractor/Plow + Satisfactory position performance as a Strike Team Leader Tractor/Plow on a wildland fire incident
<u>PHYSICAL FITNESS</u>	Arduous
<u>OTHER POSITION ASSIGNMENTS THAT WILL MAINTAIN CURRENCY</u>	Strike Team Leader (Crew, Dozer, Engine)

OPERATIONS

STRIKE TEAM LEADER DOZER (STDZ)

<u>REQUIRED TRAINING</u>	Task Force/Strike Team Leader (S-330) Introduction to Wildland Fire Behavior Calculations (S-390)
<u>KNOWLEDGE AND SKILLS NEEDED</u>	Intermediate ICS (I-300) Leadership and Organizational Development (S-301)
<u>PREREQUISITE EXPERIENCE</u>	Satisfactory performance as a Single Resource Boss Dozer + Satisfactory position performance as a Strike Team Leader Dozer on a wildland fire incident
<u>PHYSICAL FITNESS</u>	Arduous
<u>OTHER POSITION ASSIGNMENTS THAT WILL MAINTAIN CURRENCY</u>	Strike Team Leader (Crew, Engine, Tractor/Plow)

STRIKE TEAM LEADER ENGINE (STEN)

<u>REQUIRED TRAINING</u>	Task Force/Strike Team Leader (S-330) Introduction to Wildland Fire Behavior Calculations (S-390)
<u>KNOWLEDGE AND SKILLS NEEDED</u>	Intermediate ICS (I-300) Leadership and Organizational Development (S-301)
<u>PREREQUISITE EXPERIENCE</u>	Satisfactory performance as a Single Resource Boss Engine + Satisfactory position performance as a Strike Team Leader Engine on a wildland fire incident
<u>PHYSICAL FITNESS</u>	Arduous
<u>OTHER POSITION ASSIGNMENTS THAT WILL MAINTAIN CURRENCY</u>	Strike Team Leader (Crew, Dozer, Tractor/Plow)

STRIKE TEAM LEADER CREW (STCR)

<u>REQUIRED TRAINING</u>	Task Force/Strike Team Leader(S-330) Introduction to Wildland Fire Behavior Calculations (S-390) Fire Operations In the Urban Interface (S-205)
<u>KNOWLEDGE AND SKILLS NEEDED</u>	Intermediate ICS (I-300) Leadership and Organizational Development (S-301)
<u>PREREQUISITE EXPERIENCE</u>	Satisfactory performance as a Single Resource Boss Crew + Satisfactory position performance as a Strike Team Leader Crew on a wildland fire incident
<u>PHYSICAL FITNESS</u>	Arduous
<u>OTHER POSITION ASSIGNMENTS THAT WILL MAINTAIN CURRENCY</u>	Strike Team Leader (Dozer, Engine, Tractor/Plow)

CREW REPRESENTATIVE (CREP)

<u>REQUIRED TRAINING</u>	Fire Operations In the Urban Interface (S-205)
<u>KNOWLEDGE AND SKILLS NEEDED</u>	None
<u>PREREQUISITE EXPERIENCE</u>	Satisfactory performance as a Single Resource Boss Crew + Satisfactory position performance as a Crew Representative
<u>PHYSICAL FITNESS</u>	Arduous
<u>OTHER POSITION ASSIGNMENTS THAT WILL MAINTAIN CURRENCY</u>	Single Resource Boss Crew

OPERATIONS

CREW BOSS (SINGLE RESOURCE) (CRWB)

<u>REQUIRED TRAINING</u>	Crew Boss (S-230) Intermediate Wildland Fire Behavior (S-290)
<u>KNOWLEDGE AND SKILLS NEEDED</u>	Basic ICS (I-200) Ignition Operations (S-234) Interagency Incident Business Management (S-260) Basic Air Operations (S-270)
<u>PREREQUISITE EXPERIENCE</u>	Satisfactory performance as an Advanced Firefighter/Squad Boss + Satisfactory position performance as a Single Resource Boss Crew on a wildland or prescribed fire incident
<u>PHYSICAL FITNESS</u>	Arduous
<u>OTHER POSITION ASSIGNMENTS THAT WILL MAINTAIN CURRENCY</u>	Single Resource Boss (Dozer, Engine, Felling, Firing, Tractor/Plow) Incident Commander Type 4

DOZER BOSS (SINGLE RESOURCE) (DOZB)

<u>REQUIRED TRAINING</u>	Crew Boss (S-230) Intermediate Wildland Fire Behavior (S-290) Dozer Boss (S-232) Fire Operations in the Urban Interface (S-205)
<u>KNOWLEDGE AND SKILLS NEEDED</u>	Basic ICS (I-200) Interagency Incident Business Management (S-260) Basic Air Operations (S-270) Ignition Operations (S-234)
<u>PREREQUISITE EXPERIENCE</u>	Satisfactory performance as an Advanced Firefighter/Squad Boss + Satisfactory position performance as a Single Resource Boss Dozer on a wildland fire incident
<u>PHYSICAL FITNESS</u>	Arduous
<u>OTHER POSITION ASSIGNMENTS THAT WILL MAINTAIN CURRENCY</u>	Single Resource Boss (Crew, Engine, Felling, Firing, Tractor/Plow)

FELLING BOSS (SINGLE RESOURCE) (FELB)

<u>REQUIRED TRAINING</u>	Crew Boss (S-230) Intermediate Wildland Fire Behavior (S-290) Wildland Power Saws (S-212)
<u>KNOWLEDGE AND SKILLS NEEDED</u>	Basic ICS (I-200) Interagency Incident Business Management (S-260) Basic Air Operations (S-270)
<u>PREREQUISITE EXPERIENCE</u>	Satisfactory performance as an Advanced Firefighter/Squad Boss + Satisfactory position performance as a Felling Boss on a wildland or prescribed fire incident
<u>PHYSICAL FITNESS</u>	Arduous
<u>OTHER POSITION ASSIGNMENTS THAT WILL MAINTAIN CURRENCY</u>	Single Resource Boss (Crew, Dozer, Engine, Firing, Tractor/Plow)

FIRING BOSS (SINGLE RESOURCE) (FIRB)

<u>REQUIRED TRAINING</u>	Crew Boss (S-230) Intermediate Wildland Fire Behavior (S-290) Ignition Operations (S-234)
<u>KNOWLEDGE AND SKILLS NEEDED</u>	Basic ICS (I-200) Interagency Incident Business Management (S-260) Basic Air Operations (S-270)
<u>PREREQUISITE EXPERIENCE</u>	Satisfactory performance as an Advanced Firefighter/Squad Boss + Satisfactory position performance as a Single Resource Boss Firing on a wildland or prescribed fire incident
<u>PHYSICAL FITNESS</u>	Arduous
<u>OTHER POSITION ASSIGNMENTS THAT WILL MAINTAIN CURRENCY</u>	Single Resource Boss (Crew, Dozer, Engine, Felling, Tractor/Plow)

OPERATIONS

ENGINE BOSS (SINGLE RESOURCE) (ENGB)

REQUIRED TRAINING

Crew Boss (S-230)
Intermediate Wildland Fire Behavior
(S-290)
Engine Boss (S-231)
Fire Operations in the Urban Interface
(S-205)

KNOWLEDGE AND SKILLS NEEDED

Basic ICS (I-200)
Ignition Operations (S-234)
Interagency Incident Business Management
(S-260)
Basic Air Operations (S-270)

PREREQUISITE EXPERIENCE

Satisfactory performance as an Advanced
Firefighter/Squad Boss
+
Satisfactory position performance as a
Single Resource Boss Engine on a wildland
or prescribed fire incident

PHYSICAL FITNESS

Arduous

OTHER POSITION ASSIGNMENTS THAT
WILL MAINTAIN CURRENCY

Single Resource Boss (Crew, Dozer,
Felling, Firing, Tractor/Plow)

TRACTOR/PLOW BOSS (SINGLE RESOURCE) (TRPB)

REQUIRED TRAINING

Crew Boss (S-230)
Intermediate Wildland Fire Behavior
(S-290)
Tractor/Plow Boss (S-233)
Fire Operations in the Urban Interface
(S-205)

KNOWLEDGE AND SKILLS NEEDED

Basic ICS (I-200)
Interagency Incident Business Management
(S-260)
Basic Air Operations (S-270)

PREREQUISITE EXPERIENCE

Satisfactory performance as an Advanced
Firefighter/Squad Boss
+
Satisfactory position performance as a
Single Resource Boss Tractor/Plow on a
wildland or prescribed fire incident

PHYSICAL FITNESS

Arduous

OTHER POSITION ASSIGNMENTS THAT
WILL MAINTAIN CURRENCY

Single Resource Boss (Crew, Dozer,
Engine, Felling, Firing)

STAGING AREA MANAGER (STAM)

<u>REQUIRED TRAINING</u>	None
<u>KNOWLEDGE AND SKILLS NEEDED</u>	Basic ICS (I-200) Wildland Fire Suppression Orientation for Non-Operations Personnel (S-110) Supervisory Concepts and Techniques (S-201) Staging Area Manager (J-236)
<u>PREREQUISITE EXPERIENCE</u>	Satisfactory position performance as a Staging Area Manager
<u>PHYSICAL FITNESS</u>	Light
<u>OTHER POSITION ASSIGNMENTS THAT WILL MAINTAIN CURRENCY</u>	Advanced Firefighter/Squad Boss

ADVANCED FIREFIGHTER/SQUAD BOSS (FFT1)

<u>REQUIRED TRAINING</u>	Advanced Firefighter Training (S-131)
<u>KNOWLEDGE AND SKILLS NEEDED</u>	Supervisory Concepts and Techniques (S-201) Portable Pumps and Water Use (S-211) Wildfire Power Saws (S-212)
<u>PREREQUISITE EXPERIENCE</u>	Satisfactory performance as a Firefighter Type 2 + Satisfactory position performance as an Advanced Firefighter/Squad Boss on a wildland fire incident
<u>PHYSICAL FITNESS</u>	Arduous
<u>OTHER POSITION ASSIGNMENTS THAT WILL MAINTAIN CURRENCY</u>	Incident Commander Type 5

OPERATIONS

FIREFIGHTER (FFT2)

<u>REQUIRED TRAINING</u>	Firefighter Training (S-130) Introduction to Wildland Fire Behavior (S-190)
<u>KNOWLEDGE AND SKILLS NEEDED</u>	Introduction to ICS (I-100)
<u>PREREQUISITE EXPERIENCE</u>	None
<u>PHYSICAL FITNESS</u>	Arduous
<u>OTHER POSITION ASSIGNMENTS THAT WILL MAINTAIN CURRENCY</u>	None

AREA COMMAND AVIATION COORDINATOR (ACAC)

<u>REQUIRED TRAINING</u>	Area Command (S-620)
<u>KNOWLEDGE AND SKILLS NEEDED</u>	None
<u>PREREQUISITE EXPERIENCE</u>	Satisfactory performance as an Air Operations Branch Director on a National Incident Management Team + Satisfactory position performance as an Area Command Aviation Coordinator on a wildland fire incident
<u>PHYSICAL FITNESS</u>	None
<u>OTHER POSITION ASSIGNMENTS THAT WILL MAINTAIN CURRENCY</u>	Air Operations Branch Director

AIR OPERATIONS BRANCH DIRECTOR (AOBD)

<u>REQUIRED TRAINING</u>	Air Operations Branch Director (S-470)
<u>KNOWLEDGE AND SKILLS NEEDED</u>	Advanced ICS (I-400) Interagency Aviation Safety Management
<u>PREREQUISITE EXPERIENCE</u>	Satisfactory position performance as an Air Support Group Supervisor + Satisfactory position performance as an Air Operations Branch Director on a wildland fire incident
<u>PHYSICAL FITNESS</u>	None
<u>OTHER POSITION ASSIGNMENTS THAT WILL MAINTAIN CURRENCY</u>	Air Support Group Supervisor

AIR OPERATIONS

AIR SUPPORT GROUP SUPERVISOR (ASGS)

<u>REQUIRED TRAINING</u>	None
<u>KNOWLEDGE AND SKILLS NEEDED</u>	Intermediate ICS (I-300) Air Support Group Supervisor (J-375)
<u>PREREQUISITE EXPERIENCE</u>	Satisfactory position performance as a Helibase Manager Type 1 + Satisfactory position performance as an Air Support Group Supervisor on a wildland fire incident
<u>PHYSICAL FITNESS</u>	None
<u>OTHER POSITION ASSIGNMENTS THAT WILL MAINTAIN CURRENCY</u>	Helibase Manager Type 1

HELIBASE MANAGER (FOUR OR MORE HELICOPTERS) (HEB1)

<u>REQUIRED TRAINING</u>	None
<u>KNOWLEDGE AND SKILLS NEEDED</u>	None
<u>PREREQUISITE EXPERIENCE</u>	Satisfactory performance as a Helibase Manager Type 2 + Satisfactory position performance as a Helibase Manager Type 1
<u>PHYSICAL FITNESS</u>	Light
<u>OTHER POSITION ASSIGNMENTS THAT WILL MAINTAIN CURRENCY</u>	Helibase Manager Type 2

HELIBASE MANAGER (ONE TO THREE HELICOPTERS) (HEB2)

<u>REQUIRED TRAINING</u>	Helibase Manager (S-371)
<u>KNOWLEDGE AND SKILLS NEEDED</u>	Leadership and Organizational Development (S-301) Intermediate ICS (I-300)
<u>PREREQUISITE EXPERIENCE</u>	Satisfactory performance as a Helicopter Manager + Satisfactory position performance as a Helibase Manager Type 2
<u>PHYSICAL FITNESS</u>	Light
<u>OTHER POSITION ASSIGNMENTS THAT WILL MAINTAIN CURRENCY</u>	Helicopter Manager

HELICOPTER MANAGER (HEMG)

<u>REQUIRED TRAINING</u>	None
<u>KNOWLEDGE AND SKILLS NEEDED</u>	Basic ICS (I-200) Interagency Incident Business Management (S-260) Supervisory Concepts and Techniques (S-201) Contract Administration Skills
<u>PREREQUISITE EXPERIENCE</u>	Satisfactory performance as a Helicopter Crewmember + Satisfactory performance as an Incident Commander Type 4 + Satisfactory position performance as a Helicopter Manager
<u>PHYSICAL FITNESS</u>	Arduous
<u>OTHER POSITION ASSIGNMENTS THAT WILL MAINTAIN CURRENCY</u>	None

AIR OPERATIONS

HELICOPTER CREWMEMBER (HECM)

<u>REQUIRED TRAINING</u>	Interagency Helicopter Training Guide (S-217)
<u>KNOWLEDGE AND SKILLS NEEDED</u>	None
<u>PREREQUISITE EXPERIENCE</u>	Satisfactory performance as a Firefighter Type 2 + Satisfactory position performance as a Helicopter Crewmember
<u>PHYSICAL FITNESS</u>	Arduous
<u>OTHER ASSIGNMENTS THAT WILL MAINTAIN CURRENCY</u>	None

AIR TACTICAL GROUP SUPERVISOR (ATGS)

<u>REQUIRED TRAINING</u>	Air Tactical Group Supervisor (S-378)
<u>KNOWLEDGE AND SKILLS NEEDED</u>	None
<u>PREREQUISITE EXPERIENCE</u>	Satisfactory performance as a Division/Group Supervisor + Satisfactory position performance as an Air Tactical Group Supervisor on a wildland fire incident
<u>PHYSICAL FITNESS</u>	None
<u>OTHER POSITION ASSIGNMENTS THAT WILL MAINTAIN CURRENCY</u>	None

AIR TANKER/FIXED WING COORDINATOR (ATCO)

<u>REQUIRED TRAINING</u>	Agency specified
<u>KNOWLEDGE AND SKILLS NEEDED</u>	Agency specified
<u>PREREQUISITE EXPERIENCE</u>	Agency specified
<u>PHYSICAL FITNESS</u>	None
<u>OTHER ASSIGNMENTS THAT WILL MAINTAIN CURRENCY</u>	None

HELICOPTER COORDINATOR (HLCO)

<u>REQUIRED TRAINING</u>	Air Tactical Group Supervisor (S-378)
<u>KNOWLEDGE AND SKILLS NEEDED</u>	None
<u>PREREQUISITE EXPERIENCE</u>	Satisfactory performance as a Helicopter Manager + Satisfactory performance as a Task Force Leader + Satisfactory position performance as Helicopter Coordinator on a wildland fire incident
<u>PHYSICAL FITNESS</u>	Moderate
<u>OTHER POSITION ASSIGNMENTS THAT WILL MAINTAIN CURRENCY</u>	None

DECK COORDINATOR (DECK)

<u>REQUIRED TRAINING</u>	None
<u>KNOWLEDGE AND SKILLS NEEDED</u>	None
<u>PREREQUISITE EXPERIENCE</u>	Satisfactory performance as a Takeoff and Landing Coordinator + Satisfactory position performance as a Deck Coordinator
<u>PHYSICAL FITNESS</u>	Moderate
<u>OTHER POSITION ASSIGNMENTS THAT WILL MAINTAIN CURRENCY</u>	Takeoff and Landing Coordinator

AIR OPERATIONS

TAKE-OFF AND LANDING COORDINATOR (TOLC)

<u>REQUIRED TRAINING</u>	None
<u>KNOWLEDGE AND SKILLS NEEDED</u>	None
<u>PREREQUISITE EXPERIENCE</u>	Satisfactory performance as Aircraft Base Radio Operator + Satisfactory position performance as a Take-Off and Landing Coordinator
<u>PHYSICAL FITNESS</u>	Light
<u>OTHER POSITION ASSIGNMENTS THAT WILL MAINTAIN CURRENCY</u>	Aircraft Base Radio Operator

AIRCRAFT BASE RADIO OPERATOR (ABRO)

<u>REQUIRED TRAINING</u>	None
<u>KNOWLEDGE AND SKILLS NEEDED</u>	None
<u>PREREQUISITE EXPERIENCE</u>	Satisfactory performance as a Helicopter Crewmember + Satisfactory position performance as a Aircraft Base Operator
<u>PHYSICAL FITNESS</u>	Light
<u>OTHER POSITION ASSIGNMENTS THAT WILL MAINTAIN CURRENCY</u>	Helicopter Crewmember

PLANNING SECTION

ASSISTANT AREA COMMANDER, PLANNING (ACPC)

<u>REQUIRED TRAINING</u>	Area Command (S-620)
<u>KNOWLEDGE AND SKILLS NEEDED</u>	None
<u>PREREQUISITE EXPERIENCE</u>	Satisfactory performance as an Incident Commander or general staff on a National Incident Management Team + Satisfactory position performance as an Assistant Area Commander, Planning on a wildland fire incident
<u>PHYSICAL FITNESS</u>	None
<u>OTHER POSITION ASSIGNMENTS THAT WILL MAINTAIN CURRENCY</u>	Assistant Area Commander, Logistics

PLANNING SECTION CHIEF TYPE 1 (PSC1)

<u>REQUIRED TRAINING</u>	Advanced Incident Management (S-520)
<u>KNOWLEDGE AND SKILLS NEEDED</u>	None
<u>PREREQUISITE EXPERIENCE</u>	Satisfactory performance as a Planning Section Chief Type 2 + Satisfactory position performance as a Planning Section Chief Type 1 on a wildland fire incident
<u>PHYSICAL FITNESS</u>	None
<u>OTHER POSITION ASSIGNMENTS THAT WILL MAINTAIN CURRENCY</u>	Planning Section Chief Type 2

PLANNING

PLANNING SECTION CHIEF TYPE 2 (PSC2)

<u>REQUIRED TRAINING</u>	Command and General Staff (S-420)
<u>KNOWLEDGE AND SKILLS NEEDED</u>	Advanced ICS (I-400) Planning Section Chief (S-440)
<u>PREREQUISITE EXPERIENCE</u>	Satisfactory performance as a Situation Unit Leader + Satisfactory performance as a Resources Unit Leader + Satisfactory position performance as a Planning Section Chief Type 2 on a wildland fire incident
<u>PHYSICAL FITNESS</u>	None
<u>OTHER POSITION ASSIGNMENTS THAT WILL MAINTAIN CURRENCY</u>	Situation Unit Leader

SITUATION UNIT LEADER (SITL)

<u>REQUIRED TRAINING</u>	None
<u>KNOWLEDGE AND SKILLS NEEDED</u>	Intermediate ICS (I-300) Situation Unit Leader (S-346)
<u>PREREQUISITE EXPERIENCE</u>	Satisfactory performance in one Strike Team Leader position (Crew, Dozer, Engine, Tractor/Plow) + Satisfactory position performance as a Situation Unit Leader on a wildland fire incident
<u>PHYSICAL FITNESS</u>	Moderate
<u>OTHER POSITION ASSIGNMENTS THAT WILL MAINTAIN CURRENCY</u>	Field Observer Fire Behavior Analyst

RESOURCES UNIT LEADER (RESL)

<u>REQUIRED TRAINING</u>	None
<u>KNOWLEDGE AND SKILLS NEEDED</u>	Interagency Incident Business Management (S-260) Intermediate ICS (I-300) Leadership and Organizational Development (S-301) Resources Unit Leader (S-348)
<u>PREREQUISITE EXPERIENCE</u>	Satisfactory performance as a Status/Check-In Recorder + Satisfactory position performance as a Resources Unit Leader
<u>PHYSICAL FITNESS</u>	None
<u>OTHER POSITION ASSIGNMENTS THAT WILL MAINTAIN CURRENCY</u>	Demobilization Unit Leader Status/Check-In Recorder

STATUS/CHECK-IN RECORDER (SCKN)

<u>REQUIRED TRAINING</u>	None
<u>KNOWLEDGE AND SKILLS NEEDED</u>	Introduction to ICS (I-100) Wildland Fire Suppression Orientation for Non-Operations Personnel (S-110) Status/Check-In Recorder (S-248)
<u>PREREQUISITE EXPERIENCE</u>	Satisfactory position performance as a Status/Check-In Recorder
<u>PHYSICAL FITNESS</u>	None
<u>OTHER POSITION ASSIGNMENTS THAT WILL MAINTAIN CURRENCY</u>	None

PLANNING

DOCUMENTATION UNIT LEADER (DOCL)

<u>REQUIRED TRAINING</u>	None
<u>KNOWLEDGE AND SKILLS NEEDED</u>	Wildland Fire Suppression Orientation for Non-Operations Personnel (S-110) Basic ICS (I-200) Documentation Unit Leader (J-342)
<u>PREREQUISITE EXPERIENCE</u>	Satisfactory position performance as a Documentation Unit Leader
<u>PHYSICAL FITNESS</u>	None
<u>OTHER POSITION ASSIGNMENTS THAT WILL MAINTAIN CURRENCY</u>	None

DEMOBILIZATION UNIT LEADER (DMOB)

<u>REQUIRED TRAINING</u>	None
<u>KNOWLEDGE AND SKILLS NEEDED</u>	Demobilization Unit Leader (S-347)
<u>PREREQUISITE EXPERIENCE</u>	Satisfactory performance as a Resources Unit Leader + Satisfactory position performance as a Demobilization Unit Leader
<u>PHYSICAL FITNESS</u>	None
<u>OTHER POSITION ASSIGNMENTS THAT WILL MAINTAIN CURRENCY</u>	Resources Unit Leader Support Dispatcher

FIRE BEHAVIOR ANALYST (FBAN)

<u>REQUIRED TRAINING</u>	Advanced Wildland Fire Behavior Calculations (S-490) Advanced Fire Behavior Interpretations (S-590)
<u>KNOWLEDGE AND SKILLS NEEDED</u>	Long Term Fire Risk Assessment (S-492) Farsite: Fire Growth Simulation (S-493) National Fire Danger Rating System (S-491)
<u>PREREQUISITE EXPERIENCE</u>	Satisfactory performance as a Division/Group Supervisor + Satisfactory position performance as a Fire Behavior Analyst on a wildland fire incident
<u>PHYSICAL FITNESS</u>	Moderate
<u>OTHER POSITION ASSIGNMENTS THAT WILL MAINTAIN CURRENCY</u>	None

FIELD OBSERVER (FOBS)

<u>REQUIRED TRAINING</u>	None
<u>KNOWLEDGE AND SKILLS NEEDED</u>	Field Observer (S-244)
<u>PREREQUISITE EXPERIENCE</u>	Satisfactory performance as any Single Resource Boss (Crew, Dozer, Engine, Felling, Tractor/Plow, Firing) + Satisfactory position performance as a Field Observer on a wildland or prescribed fire incident
<u>PHYSICAL FITNESS</u>	Arduous
<u>OTHER POSITION ASSIGNMENTS THAT WILL MAINTAIN CURRENCY</u>	Single Resource Boss (Crew, Dozer, Engine, Felling, Tractor/Plow, Firing)

PLANNING

TRAINING SPECIALIST (TNSP)

<u>REQUIRED TRAINING</u>	None
<u>KNOWLEDGE AND SKILLS NEEDED</u>	Training Specialist (S-445) Wildland Fire Suppression Orientation for Non-Operations Personnel(S-110) Intermediate ICS (I-300) Leadership and Organizational Development (S-301)
<u>PREREQUISITE EXPERIENCE</u>	Satisfactory position performance as a Training Specialist
<u>PHYSICAL FITNESS</u>	None
<u>OTHER POSITION ASSIGNMENTS THAT WILL MAINTAIN CURRENCY</u>	None

INFRARED INTERPRETER (IRIN)

<u>REQUIRED TRAINING</u>	None
<u>KNOWLEDGE AND SKILLS NEEDED</u>	Introduction to ICS (I-100) Wildland Fire Suppression Orientation for Non-Operations Personnel (S-110) Infrared Interpreter (S-443) Aerial Photo Interpretation
<u>PREREQUISITE EXPERIENCE</u>	None
<u>PHYSICAL FITNESS</u>	None
<u>OTHER POSITION ASSIGNMENTS THAT WILL MAINTAIN CURRENCY</u>	None

DISPLAY PROCESSOR (DPRO)

<u>REQUIRED TRAINING</u>	None
<u>KNOWLEDGE AND SKILLS NEEDED</u>	Introduction to ICS (I-100) Wildland Fire Suppression Orientation for Non-Operations Personnel (S-110) Display Processor (S-245)
<u>EXPERIENCE</u>	None
<u>PHYSICAL FITNESS</u>	None
<u>OTHER POSITION ASSIGNMENTS THAT WILL MAINTAIN CURRENCY</u>	None

PRESCRIBED FIRE BEHAVIOR ANALYST (RXFA)

<u>REQUIRED TRAINING</u>	Introduction to Wildland Fire Behavior Calculations (S-390) Advanced Wildland Fire Behavior Calculations (S-490) Advanced Fire Behavior Interpretations (S-590) Long Term Fire Risk Assessment (S-492) Farsite: Fire Growth Simulation (S-493)
<u>KNOWLEDGE AND SKILLS NEEDED</u>	Smoke Management Techniques (RX-450) Current processing system for fire behavior calculations
<u>PREREQUISITE EXPERIENCE</u>	Satisfactory performance as a Fire Behavior Analyst + Satisfactory position performance as a Prescribed Fire Behavior Analyst <u>OR</u> Satisfactory performance as a Field Observer + Satisfactory performance as an Single Resource Boss Firing + Satisfactory position performance as a Prescribed Fire Behavior Analyst
<u>PHYSICAL FITNESS</u>	Moderate
<u>OTHER POSITION ASSIGNMENTS THAT WILL MAINTAIN CURRENCY</u>	Fire Behavior Analyst

FIRE EFFECTS MONITOR (FEMO)

<u>REQUIRED TRAINING</u>	Intermediate Wildland Fire Behavior (S-290)
<u>KNOWLEDGE AND SKILLS NEEDED</u>	Introduction to Fire Effects (RX-340)
<u>PREREQUISITE EXPERIENCE</u>	Satisfactory performance as a Firefighter Type 2 + Satisfactory position performance as a Fire Effects Monitor
<u>PHYSICAL FITNESS</u>	Arduous
<u>OTHER POSITION ASSIGNMENTS THAT WILL MAINTAIN CURRENCY</u>	None

LOGISTICS SECTION

ASSISTANT AREA COMMANDER, LOGISTICS (ACLC)

<u>REQUIRED TRAINING</u>	Area Command (S-620)
<u>KNOWLEDGE AND SKILLS NEEDED</u>	None
<u>PREREQUISITE EXPERIENCE</u>	Satisfactory performance as an Incident Commander or general staff on a National Incident Management Team + Satisfactory position performance as an Assistant Area Commander, Logistics on a wildland fire incident
<u>PHYSICAL FITNESS</u>	None
<u>OTHER POSITION ASSIGNMENTS THAT WILL MAINTAIN CURRENCY</u>	Assistant Area Commander, Planning

LOGISTICS SECTION CHIEF TYPE 1 (LSC1)

<u>REQUIRED TRAINING</u>	Advanced Incident Management (S-520)
<u>KNOWLEDGE AND SKILLS NEEDED</u>	None
<u>PREREQUISITE EXPERIENCE</u>	Satisfactory performance as a Logistics Section Chief Type 2 + Satisfactory position performance as a Logistics Section Chief Type 1
<u>PHYSICAL FITNESS</u>	None
<u>OTHER POSITION ASSIGNMENTS THAT WILL MAINTAIN CURRENCY</u>	Logistics Section Chief Type 2 Service Branch Director Support Branch Director

LOGISTICS SECTION CHIEF TYPE 2 (LSC2)

<u>REQUIRED TRAINING</u>	Command and General Staff (S-420)
<u>KNOWLEDGE AND SKILLS NEEDED</u>	Advanced ICS (I-400) Logistics Section Chief (S-450)
<u>PREREQUISITE EXPERIENCE</u>	Satisfactory performance as a Facilities Unit Leader + Satisfactory performance as a Ground Support Unit Leader + Satisfactory position performance as a Logistics Section Chief Type 2 <u>OR</u> Satisfactory performance as a Facilities Unit Leader + Satisfactory performance as a Supply Support Unit Leader + Satisfactory position performance as a Logistics Section Chief Type 2
<u>PHYSICAL FITNESS</u>	None
<u>OTHER POSITION ASSIGNMENTS THAT WILL MAINTAIN CURRENCY</u>	Service Branch Director Support Branch Director Facilities Unit Leader Ground Support Unit Leader Supply Unit Leader Medical Unit Leader Communications Unit Leader Food Unit Leader

SERVICE BRANCH DIRECTOR (SVBD)

<u>REQUIRED TRAINING</u>	None
<u>KNOWLEDGE AND SKILLS NEEDED</u>	None
<u>PREREQUISITE EXPERIENCE</u>	Satisfactory performance as a Logistics Section Chief Type 2
<u>PHYSICAL FITNESS</u>	None
<u>OTHER POSITION ASSIGNMENTS THAT WILL MAINTAIN CURRENCY</u>	Support Branch Director Medical Unit Leader Communications Unit Leader Food Unit Leader

LOGISTICS

SUPPORT BRANCH DIRECTOR (SUBD)

<u>REQUIRED TRAINING</u>	None
<u>KNOWLEDGE AND SKILLS NEEDED</u>	None
<u>PREREQUISITE EXPERIENCE</u>	Satisfactory performance as a Logistics Section Chief Type 2
<u>PHYSICAL FITNESS</u>	None
<u>OTHER POSITION ASSIGNMENTS THAT WILL MAINTAIN CURRENCY</u>	Service Branch Director Facilities Unit Leader Ground Support Unit Leader Supply Unit Leader

MEDICAL UNIT LEADER (MEDL)

<u>REQUIRED TRAINING</u>	None
<u>KNOWLEDGE AND SKILLS NEEDED</u>	Wildland Fire Suppression Orientation for Non-Operations Personnel (S-110) Intermediate ICS (I-300) Leadership and Organizational Development (S-301) Medical Unit Leader (S-359)
<u>PREREQUISITE EXPERIENCE</u>	Prior or current certification as an Emergency Medical Technician or equivalent + Satisfactory position performance as a Medical Unit Leader
<u>PHYSICAL FITNESS</u>	None
<u>OTHER POSITION ASSIGNMENTS THAT WILL MAINTAIN CURRENCY</u>	None

COMMUNICATIONS UNIT LEADER (COML)

<u>REQUIRED TRAINING</u>	None
<u>KNOWLEDGE AND SKILLS NEEDED</u>	Intermediate ICS (I-300) Leadership and Organizational Development (S-301) Communications Unit Leader (S-358)
<u>PREREQUISITE EXPERIENCE</u>	Satisfactory performance as an Incident Communications Technician + Satisfactory performance as an Incident Communications Center Manager + Satisfactory position performance as a Communications Unit Leader
<u>PHYSICAL FITNESS</u>	None
<u>OTHER POSITION ASSIGNMENTS THAT WILL MAINTAIN CURRENCY</u>	Incident Communications Center Manager Incident Communications Technician

INCIDENT COMMUNICATIONS TECHNICIAN (COMT)

<u>REQUIRED TRAINING</u>	None
<u>KNOWLEDGE AND SKILLS NEEDED</u>	Communications Equipment and Procedures (S-258) Basic ICS (I-200) Firefighter Training (S-130)
<u>PREREQUISITE EXPERIENCE</u>	Satisfactory position performance as a Incident Communications Technician
<u>PHYSICAL FITNESS</u>	None
<u>OTHER POSITION ASSIGNMENTS THAT WILL MAINTAIN CURRENCY</u>	None

LOGISTICS

INCIDENT COMMUNICATIONS CENTER MANAGER (INCM)

<u>REQUIRED TRAINING</u>	None
<u>KNOWLEDGE AND SKILLS NEEDED</u>	Wildland Fire Suppression Orientation for Non-Operations Personnel (S-110) Basic ICS (I-200) Supervisory Concepts and Techniques (S-201) Incident Communications Center Manager (J-257) Interagency Incident Business Management (S-260)
<u>PREREQUISITE EXPERIENCE</u>	Satisfactory performance as a Radio Operator + Satisfactory position performance as a Incident Communications Center Manager
<u>PHYSICAL FITNESS</u>	None
<u>OTHER POSITION ASSIGNMENTS THAT WILL MAINTAIN CURRENCY</u>	None

RADIO OPERATOR (RADO)

<u>REQUIRED TRAINING</u>	None
<u>KNOWLEDGE AND SKILLS NEEDED</u>	Wildland Fire Suppression Orientation for Non-Operations Personnel (S-110) Introduction to ICS (I-100) Firefighter Training (S-130) Introduction to Fire Behavior (S-190)
<u>PREREQUISITE EXPERIENCE</u>	Satisfactory position performance as a Radio Operator
<u>PHYSICAL FITNESS</u>	None
<u>OTHER POSITION ASSIGNMENTS THAT WILL MAINTAIN CURRENCY</u>	Aircraft Base Radio Operator

FOOD UNIT LEADER (FDUL)

<u>REQUIRED TRAINING</u>	Food Unit Leader (S-357)
<u>KNOWLEDGE AND SKILLS NEEDED</u>	Wildland Fire Suppression Orientation for Non-Operations Personnel (S-110) Intermediate ICS (I-300) Leadership and Organizational Development (S-301)
<u>PREREQUISITE EXPERIENCE</u>	Satisfactory position performance as a Food Unit Leader
<u>PHYSICAL FITNESS</u>	None
<u>OTHER POSITION ASSIGNMENTS THAT WILL MAINTAIN CURRENCY</u>	None

SUPPLY UNIT LEADER (SPUL)

<u>REQUIRED TRAINING</u>	None
<u>KNOWLEDGE AND SKILLS NEEDED</u>	Intermediate ICS (I-300) Leadership and Organizational Development (S-301) Supply Unit Leader (S-356)
<u>PREREQUISITE EXPERIENCE</u>	Satisfactory performance as an Ordering Manager + Satisfactory performance as a Receiving/Distribution Manager + Satisfactory position performance as a Supply Unit Leader
<u>PHYSICAL FITNESS</u>	None
<u>OTHER POSITION ASSIGNMENTS THAT WILL MAINTAIN CURRENCY</u>	Ordering Manager Receiving/Distribution Manager

LOGISTICS

ORDERING MANAGER (ORDM)

<u>REQUIRED TRAINING</u>	None
<u>KNOWLEDGE AND SKILLS NEEDED</u>	Wildland Fire Suppression Orientation for Non-Operations Personnel (S-110) Basic ICS (I-200) Supervisory Concepts and Techniques (S-201) Ordering Manager (J-252) Interagency Incident Business Management (S-260)
<u>PREREQUISITE EXPERIENCE</u>	Satisfactory performance as a Dispatch Recorder + Satisfactory position performance as an Ordering Manager
<u>PHYSICAL FITNESS</u>	None
<u>OTHER POSITION ASSIGNMENTS THAT WILL MAINTAIN CURRENCY</u>	Receiving/Distribution Manager Dispatch Recorder Base/Camp Manager Equipment Manager

RECEIVING/DISTRIBUTION MANAGER (RCDM)

<u>REQUIRED TRAINING</u>	None
<u>KNOWLEDGE AND SKILLS NEEDED</u>	Wildland Fire Suppression Orientation for Non-Operations Personnel (S-110) Basic ICS (I-200) Supervisory Concepts and Techniques (S-201) Receiving and Distribution Manager (J-253) Interagency Incident Business Management (S-260)
<u>PREREQUISITE EXPERIENCE</u>	Satisfactory position performance as a Receiving/Distribution Manager
<u>PHYSICAL FITNESS</u>	None
<u>OTHER POSITION ASSIGNMENTS THAT WILL MAINTAIN CURRENCY</u>	Ordering Manager

FACILITIES UNIT LEADER (FACL)

<u>REQUIRED TRAINING</u>	None
<u>KNOWLEDGE AND SKILL NEEDED</u>	Intermediate ICS (I-300) Leadership and Organizational Development (S-301) Facilities Unit Leader (J-354)
<u>PREREQUISITE EXPERIENCE</u>	Satisfactory performance as a Base/Camp Manager + Satisfactory position performance as a Facilities Unit Leader
<u>PHYSICAL FITNESS</u>	None
<u>OTHER POSITION ASSIGNMENTS THAT WILL MAINTAIN CURRENCY</u>	Ground Support Unit Leader Supply Unit Leader Base/Camp Manager Equipment Manager Ordering Manager Receiving/Distribution Manager Security Manager

SECURITY MANAGER (SECM)

<u>REQUIRED TRAINING</u>	None
<u>KNOWLEDGE AND SKILLS NEEDED</u>	Wildland Fire Suppression Orientation for Non-Operations Personnel (S-110) Basic ICS (I-200) Supervisory Concepts and Techniques (S-201) Security Manager (J-259) Interagency Incident Business Management (S-260)
<u>PREREQUISITE EXPERIENCE</u>	Satisfactory position performance as a Security Manager
<u>PHYSICAL FITNESS</u>	None
<u>OTHER POSITION ASSIGNMENTS THAT WILL MAINTAIN CURRENCY</u>	None

LOGISTICS

BASE/CAMP MANAGER (BCMG)

<u>REQUIRED TRAINING</u>	None
<u>KNOWLEDGE AND SKILLS NEEDED</u>	Wildland Fire Suppression Orientation for Non-Operations Personnel (S-110) Basic ICS (I-200) Supervisory Concepts and Techniques (S-201) Base/Camp Manager (J-254) Interagency Incident Business Management (S-260)
<u>PREREQUISITE EXPERIENCE</u>	Satisfactory position performance as a Base/Camp Manager
<u>PHYSICAL FITNESS</u>	None
<u>OTHER POSITION ASSIGNMENTS THAT WILL MAINTAIN CURRENCY</u>	Equipment Manager Ordering Manager Receiving/Distribution Manager

GROUND SUPPORT UNIT LEADER (GSUL)

<u>REQUIRED TRAINING</u>	None
<u>KNOWLEDGE AND SKILLS NEEDED</u>	Intermediate ICS (I-300) Leadership and Organizational Development (S-301) Ground Support Unit Leader (J-355)
<u>PREREQUISITE EXPERIENCE</u>	Satisfactory performance as an Equipment Manager + Satisfactory position performance as a Ground Support Unit Leader
<u>PHYSICAL FITNESS</u>	None
<u>OTHER POSITION ASSIGNMENTS THAT WILL MAINTAIN CURRENCY</u>	Facilities Unit Leader Supply Unit Leader Equipment Manager Base/Camp Manager Ordering Manager Receiving/Distribution Manager

EQUIPMENT MANAGER (EQPM)

<u>REQUIRED TRAINING</u>	None
<u>KNOWLEDGE AND SKILLS NEEDED</u>	Wildland Fire Suppression Orientation for Non-Operations Personnel (S-110) Basic ICS (I-200) Supervisory Concepts and Techniques (S-201) Equipment Manager (J-255) Interagency Incident Business Management (S-260)
<u>PREREQUISITE EXPERIENCE</u>	Satisfactory position performance as an Equipment Manager
<u>PHYSICAL FITNESS</u>	None
<u>OTHER POSITION ASSIGNMENTS THAT WILL MAINTAIN CURRENCY</u>	Base/Camp Manager Ordering Manager Receiving/Distribution Manager

FINANCE/ADMINISTRATION SECTION

FINANCE/ADMINISTRATION SECTION CHIEF TYPE 1 (FSC1)

<u>REQUIRED TRAINING</u>	Advanced Incident Management (S-520)
<u>KNOWLEDGE AND SKILLS NEEDED</u>	None
<u>PREREQUISITE EXPERIENCE</u>	Satisfactory performance as a Finance Section Chief Type 2 + Satisfactory position performance as Finance/Administration Section Chief Type 1
<u>PHYSICAL FITNESS</u>	None
<u>OTHER POSITION ASSIGNMENTS THAT WILL MAINTAIN CURRENCY</u>	Finance/Administration Section Chief Type 2

FINANCE/ADMINISTRATION SECTION CHIEF TYPE 2 (FSC2)

<u>REQUIRED TRAINING</u>	Command and General Staff (S-420)
<u>KNOWLEDGE AND SKILLS NEEDED</u>	Advanced ICS (I-400) Finance/Administration Section Chief (S-460)
<u>PREREQUISITE EXPERIENCE</u>	Satisfactory performance as a Time Unit Leader + Satisfactory performance as a Procurement Unit Leader + Satisfactory position performance as a Finance/Administration Section Chief Type 2 <u>OR</u> Satisfactory performance as a Time Unit Leader + Satisfactory performance as a Cost Unit Leader + Satisfactory position performance as a Finance/Administration Section Chief Type 2
<u>PHYSICAL FITNESS</u>	None
<u>OTHER POSITION ASSIGNMENTS THAT WILL MAINTAIN CURRENCY</u>	Cost Unit Leader Procurement Unit Leader Time Unit Leader Comp/Claims Unit Leader

TIME UNIT LEADER (TIME)

<u>REQUIRED TRAINING</u>	None
<u>KNOWLEDGE AND SKILLS NEEDED</u>	Intermediate ICS (I-300) Leadership and Organizational Development (S-301) Finance/Administration Unit Leader (S-360)
<u>PREREQUISITE EXPERIENCE</u>	Satisfactory performance as a Personnel Time Recorder + Satisfactory position performance as a Time Unit Leader
<u>PHYSICAL FITNESS</u>	None
<u>OTHER POSITION ASSIGNMENTS THAT WILL MAINTAIN CURRENCY</u>	Personnel Time Recorder Equipment Time Recorder

PERSONNEL TIME RECORDER (PTRC)

<u>REQUIRED TRAINING</u>	None
<u>KNOWLEDGE AND SKILLS NEEDED</u>	Wildland Fire Suppression Orientation for Non-Operations Personnel (S-110) Interagency Incident Business Management (S-260) Applied Interagency Incident Business Management (S-261)
<u>PREREQUISITE EXPERIENCE</u>	Satisfactory position performance as a Personnel Time Recorder
<u>PHYSICAL FITNESS</u>	None
<u>OTHER POSITION ASSIGNMENTS THAT WILL MAINTAIN CURRENCY</u>	None

FINANCE/ADMINISTRATION

COST UNIT LEADER (COST)

<u>REQUIRED TRAINING</u>	None
<u>KNOWLEDGE AND SKILLS NEEDED</u>	Wildland Fire Suppression Orientation for Non-Operations Personnel (S-110) Interagency Incident Business Management (S-260) Intermediate ICS (I-300) Leadership and Organizational Development (S-301) Applied Interagency Incident Business Management (S-261) Finance/Administration Unit Leader (S-360)
<u>PREREQUISITE EXPERIENCE</u>	Satisfactory position performance as a Cost Unit Leader
<u>PHYSICAL FITNESS</u>	None
<u>OTHER POSITION ASSIGNMENTS THAT WILL MAINTAIN CURRENCY</u>	None

COMMISSARY MANAGER (CMSY)

<u>REQUIRED TRAINING</u>	None
<u>KNOWLEDGE AND SKILLS NEEDED</u>	Wildland Fire Suppression Orientation for Non-Operations Personnel (S-110) Interagency Incident Business Management (S-260) Applied Interagency Incident Business Management (S-261)
<u>PREREQUISITE EXPERIENCE</u>	Satisfactory position performance as a Commissary Manager
<u>PHYSICAL FITNESS</u>	None
<u>OTHER POSITION ASSIGNMENTS THAT WILL MAINTAIN CURRENCY</u>	None

COMPENSATION/CLAIMS UNIT LEADER (COMP)

<u>REQUIRED TRAINING</u>	None
<u>KNOWLEDGE AND SKILLS NEEDED</u>	Intermediate ICS (I-300) Leadership and Organizational Development (S-301) Finance/Administration Unit Leader (S-360)
<u>PREREQUISITE EXPERIENCE</u>	Satisfactory performance as a Compensation-for-Injury Specialist + Satisfactory performance as a Claims Specialist + Satisfactory position performance as a Compensation/Claims Unit Leader
<u>PHYSICAL FITNESS</u>	None
<u>OTHER POSITION ASSIGNMENTS THAT WILL MAINTAIN CURRENCY</u>	Claims Specialist Compensation-for-Injury Specialist

COMPENSATION-FOR-INJURY SPECIALIST (INJR)

<u>REQUIRED TRAINING</u>	None
<u>KNOWLEDGE AND SKILLS NEEDED</u>	Wildland Fire Suppression Orientation for Non-Operations Personnel (S-110) Interagency Incident Business Management (S-260) Applied Interagency Incident Business Management (S-261)
<u>PREREQUISITE EXPERIENCE</u>	Satisfactory position performance as a Compensation-For-Injury Specialist
<u>PHYSICAL FITNESS</u>	None
<u>OTHER POSITION ASSIGNMENTS THAT WILL MAINTAIN CURRENCY</u>	Claims Specialist

FINANCE/ADMINISTRATION

CLAIMS SPECIALIST (CLMS)

<u>REQUIRED TRAINING</u>	None
<u>KNOWLEDGE AND SKILLS NEEDED</u>	Wildland Fire Suppression Orientation for Non-Operations Personnel (S-110) Interagency Incident Business Management (S-260) Applied Interagency Incident Business Management (S-261)
<u>PREREQUISITE EXPERIENCE</u>	Satisfactory position performance as a Claims Specialist
<u>PHYSICAL FITNESS</u>	None
<u>OTHER POSITION ASSIGNMENTS THAT WILL MAINTAIN CURRENCY</u>	Compensation-for-Injury Specialist

PROCUREMENT UNIT LEADER (PROC)

<u>REQUIRED TRAINING</u>	None
<u>KNOWLEDGE AND SKILLS NEEDED</u>	Intermediate ICS (I-300) Leadership and Organizational Development (S-301) Finance/Administration Unit Leader (S-360)
<u>PREREQUISITE EXPERIENCE</u>	Satisfactory position performance as a Procurement Unit Leader
<u>PHYSICAL FITNESS</u>	None
<u>OTHER POSITION ASSIGNMENTS THAT WILL MAINTAIN CURRENCY</u>	Equipment Time Recorder

EQUIPMENT TIME RECORDER (EQTR)

<u>REQUIRED TRAINING</u>	None
<u>KNOWLEDGE AND SKILLS NEEDED</u>	Wildland Fire Suppression Orientation for Non-Operations Personnel (S-110) Interagency Incident Business Management(S-260) Applied Interagency Incident Business Management (S-261)
<u>PREREQUISITE EXPERIENCE</u>	Satisfactory position performance as an Equipment Time Recorder
<u>PHYSICAL FITNESS</u>	None
<u>OTHER POSITION ASSIGNMENTS THAT WILL MAINTAIN CURRENCY</u>	None

EXPANDED DISPATCH SECTION

COORDINATOR (CORD)

<u>REQUIRED TRAINING</u>	None
<u>KNOWLEDGE AND SKILLS NEEDED</u>	Advanced ICS (I-400) Multi-Agency Coordinating Group <u>OR</u> Multi-Agency Coordination (I-401)
<u>PREREQUISITE EXPERIENCE</u>	Satisfactory performance as a Supervisory Dispatcher + Satisfactory position performance as a Coordinator
<u>PHYSICAL FITNESS</u>	None
<u>OTHER POSITION ASSIGNMENTS THAT WILL MAINTAIN CURRENCY</u>	Supervisory Dispatcher

SUPERVISORY DISPATCHER (EDSP)

<u>REQUIRED TRAINING</u>	Interagency Aviation Management and Safety
<u>KNOWLEDGE AND SKILLS NEEDED</u>	Intermediate ICS (I-300) Leadership and Organizational Development (S-301) Supervisory Dispatcher (D-510)
<u>PREREQUISITE EXPERIENCE</u>	Satisfactory performance as a Support Dispatcher in at least four functional areas (Aircraft, Overhead, Crews, Equipment, Supplies or Intelligence) + Satisfactory position performance as a Supervisory Dispatcher
<u>PHYSICAL FITNESS</u>	None
<u>OTHER POSITION ASSIGNMENTS THAT WILL MAINTAIN CURRENCY</u>	Support Dispatcher

SUPPORT DISPATCHER (EDSD)

<u>REQUIRED TRAINING</u>	None
<u>KNOWLEDGE AND SKILLS NEEDED</u>	Basic ICS (I-200) Supervisory Concepts and Techniques (S-201) Support Dispatcher (D-310) Interagency Incident Business Management (S-260) Basic Air Operations (S-270)
<u>PREREQUISITE EXPERIENCE</u>	Satisfactory performance as a Dispatch Recorder + Satisfactory position performance as a Support Dispatcher
<u>PHYSICAL FITNESS</u>	None
<u>OTHER POSITION ASSIGNMENTS THAT WILL MAINTAIN CURRENCY</u>	Dispatch Recorder Supply Unit Leader

DISPATCH RECORDER (EDRC)

<u>REQUIRED TRAINING</u>	None
<u>KNOWLEDGE AND SKILLS NEEDED</u>	Introduction to ICS (I-100) Dispatch Recorder (D-110) Wildland Fire Suppression Orientation for Non-Operations Personnel (S-110) Firefighter Training (S-130)
<u>PREREQUISITE EXPERIENCE</u>	Satisfactory position performance as a Dispatch Recorder
<u>PHYSICAL FITNESS</u>	None
<u>OTHER POSITION ASSIGNMENTS THAT WILL MAINTAIN CURRENCY</u>	Ordering Manager

APPENDIX A

Position Task Book Administration

I. TASK BOOK DESIGN AND USE

Each section and page of the PTB are important to the process.

- A. The cover includes the title of the position and, if applicable, states that a "wildland or prescribed fire assignment is required" prior to certification. The cover also contains a block of information that includes the name of the individual (trainee), the person initiating the PTB, and the date that it was initiated. The home unit or Training Specialist, when appropriate, (see Section II., A.,3. of this appendix) on an incident will enter this information.
- B. The Verification/Certification of Completed Task Book on the reverse side of the cover provides a record of the final evaluator's recommendation and agency certification. This should be kept on file by the agency to support certification. The final evaluator will complete the verification section recommending certification and the home unit, when appropriate, will complete the certification.
- C. The introductory information on pages 3 and 4 provides a brief description of how the PTB is to be used and the responsibilities of those involved. More information is provided in this Appendix.
- D. The Qualification Record includes:
 - (1) The left column contains a listing of the tasks which must be performed. If a specific standard (quality or quantity) is required, it will be specified in the task. Sub-items of tasks, identified as bullet statements, further define what is included in the task and how the task is to be performed. All bullet statements within a task which require an action (contain an action verb) must be demonstrated before that task can be signed off.
 - (2) The column labeled CODE will contain a code that specifies the type of situation in which evaluation of the task must occur.

"O" (other) is the least restrictive. Tasks labeled with an "O" can be completed in any situation. Successful completion of a training course which tests knowledge/skills associated with the task is acceptable, as is evaluation of performance under simulated or on-the-job situations. Assignment to an incident is not required. An example of an "O" situation is one in which an administrative officer, as a part of their regular job, may perform many of the tasks associated with a finance/administrative position for which they have been identified as a trainee. In this case, an evaluator may observe and document performance of the "O" task in the regular job setting.

"I" (incident) must be performed on an incident of any type (wildland fire, prescribed fire, structural fire, search and rescue, hazmat, oil spill, emergency, non-emergency, planned or unplanned) which is managed using the ICS.

"W" (wildland fire) must be performed on a wildland fire incident.

"Rx" (prescribed fire) must be performed on a prescribed fire incident.

"/R" (rare event) when added to the above codes this means that this task would rarely occur and opportunities to evaluate performance in a real setting would be limited. This label applies to tasks which are required in such situations as accidents, injuries, aircraft crashes, etc. The evaluator must use some discretion in evaluating these tasks. The evaluator may be able to determine, through interview, if the trainee would be able to perform the task in a real situation. Also, the trainee's home unit may need to arrange for another assignment or an evaluation under simulated conditions.

Tasks which carry both "W" and "RX" codes, may be demonstrated on either a wildland fire or a prescribed fire incident.

- (3) The column labeled "Evaluation Record #" refers to the evaluation records at the end of the PTB (see E, "The Evaluation Record" below). Each evaluator will complete an evaluation record and use the number of that record when they evaluate the tasks.
- (4) The right-hand column provides space for the evaluator to initial and date when the task is completed. All tasks must be completed, initialed and dated before the trainee can be recommended for certification in the position.

E. The Evaluation Record (four blocks at the end of the PTB) is for recording information about the type and complexity of the incident on which the evaluation was made and the recommendations of the evaluator. There are specific instructions for completion of the evaluation record included in the PTB.

II. RESPONSIBILITIES

A. The Home Unit

The home unit is the designated agency that employs the individual. This could be a district, county, state, park, reservation or similar entity, and/or the administrator who manages the qualification system.

It is the responsibility of the home unit to:

1. Select trainees, based upon the needs of the home unit and agreements with cooperators.
2. Ensure that individuals selected as trainees have met all required training and prerequisite experience for the position as stated in PMS 310-1.

EXAMPLE: An individual selected as a trainee for the position of Single Resource Boss Crew (CRWB) must have documented, satisfactory performance as an Advanced Firefighter/Squad Boss (FFT1) and must have successfully completed the required training courses prior to: obtaining an initiated PTB; performing on-the-job-training; or filling position performance assignments.

3. Initiate and issue the PTB to the trainee, explain the purpose of the PTB and the training, qualification and certification process to ensure that the trainee clearly understands the responsibilities. PTBs can only be initiated by the home unit or a training specialist on an incident. The training specialist may only initiate and issue a PTB if there is a clear indication from the home unit that such an action is acceptable. Clear indications include a designation of "trainee" for the position on the incident qualification card or direct contact with the appropriate official at the home unit.
4. Ensure the trainee has the opportunity to acquire the knowledge/skills necessary to perform the position. This includes completion of training courses and on-the-job training assignments. It is important to ensure that the trainee is fully prepared to perform the tasks of the position prior to undertaking a position performance assignment(s).
5. Provide opportunities for non-incident ("0") task evaluation, for position performance assignments on local incidents and/or make the trainee available for assignments to larger incidents. The home unit must provide an evaluator for local incidents. Evaluators must be certified in the position they are evaluating. The only exception is when a subject matter expert is assigned to evaluate "0" tasks by the home unit.
6. Track the progress of the trainee. This is a responsibility the home unit shares with the trainee. The PTB should be reviewed and the training plan re-evaluated after each position performance assignment.
7. Review and confirm the completion of the PTB and make a determination of certification. This determination should be made based on specific knowledge of the individual's capabilities and local policy as well as the completed PTB. Only the home unit has the authority to certify an individual's qualifications.

8. Issue proof of certification as required by PMS 310-1. This proof is normally an incident qualification card.

B. The Trainee

The trainee is the individual, approved by their agency, who is preparing to qualify for a position. Trainee status requires that all prerequisite experience and required training courses have been completed prior to initiation of a position task book by the appropriate agency official of the home unit. The trainee is then eligible for on-the-job training, task evaluation and/or position performance evaluation.

It is the responsibility of the trainee to:

1. Review and understand the instructions in the PTB.
2. Meet with trainer/coach and/or evaluator and identify desired goals and objectives for an assignment.
3. Ensure that he/she is ready to perform the tasks of the position prior to undertaking a position performance assignment. This includes acquisition of the knowledge and skills needed to perform the job tasks. On-the-job training assignments may assist in acquiring those knowledge and skills.
4. Provide background information (training and experience) to the trainer/coach or evaluator.
5. Complete the PTB within a three-year time limit. This is three years from the time the first task is evaluated until the task book is completed. Otherwise, the trainee must begin the process anew.

Note: Individuals that have 1993 edition PTBs, that were initiated prior to December 31, 1999, may continue to complete those at the discretion of the appropriate official of the home unit within the three year time period established in this guide. This means that 1993 edition PTBs will no longer be valid if completed any later than December 31, 2002.

6. Make sure that a qualified evaluator initials all tasks as they are completed and completes the appropriate evaluation record.
7. Safeguard the PTB. This is extremely important as the PTB is the only record of task performance. A lost or destroyed PTB may require additional position performance assignments. It is suggested that a copy of the original be made following each assignment.
8. Provide a copy of the completed PTB to the home unit. The original is kept in the trainee's personal records.

C. The Trainer/Coach

The trainer/coach is a position qualified individual who provides instruction to a trainee. This may be in the classroom, on-the-job, or on an incident. While many of the requirements of the trainer/coach are similar to those of an evaluator, it is important that the roles of training and evaluation remain separate as described in this guide.

It is the responsibility of the trainer/coach to:

1. Be certified in the position being for which training is being provided. The only exception is when a subject matter expert is assigned to provide training for tasks marked "O".
2. Meet with the trainee during the first phase of an on-the-job training assignment and determine past experience and training, current qualifications, desired goals and objectives of the assignment.
3. Review the tasks in the PTB with the trainee and explain the procedures that will be used in the training assignment and the objectives which should be met during the assignment.
4. Reach agreement with the trainee on the specific tasks which can be mastered during the assignment.
5. Document training assignment according to the situation and/or agency policy.

6. At the discretion of the Trainer/Coach, it may be possible to provide on-the-job training and then recommend a position performance assignment at a later time during the same incident. (See note on the functions of training and task evaluation under item D., 2., below)

D. The Evaluator

The evaluator is the person who will actually observe for certification/re-certification purposes the tasks being performed and documents successful performance.

It is the responsibility of the evaluator to:

1. Be certified in the position being evaluated. The only exception is when a subject matter expert is assigned to evaluate "O" tasks by the home unit.
2. Meet with the trainee as the first phase of a position performance assignment and determine past experience and training, current qualifications, desired goals and objectives of the assignment. If an evaluator determines that the trainee does not meet the prerequisites for the position or does not have the knowledge/skills to perform the tasks of the position, then the position performance assignment must not continue.

At the discretion of the evaluator or training specialist on the incident and if the individual meets the prerequisites, it may be possible to provide on-the-job training and reinstate the performance assignment at a later time during the same incident.

NOTE: The PTBs are designed primarily for the evaluation of individual performance or as a checklist for re-certification, but they may also be used as a basis for on-the-job training. The trainer/coach and the evaluator may also be the same person, however, the functions of training and evaluation must remain separate. For example, a trainer/coach may be instructing a trainee in pump operation tasks. When the trainee appears to have mastered the tasks, the trainer/coach can become the evaluator and observe and record performance of the task. It's similar to

instruction in the classroom and taking a test. The two functions are separate. They can be performed in sequence, but not at the same time.

3. Review the tasks in the PTB with the trainee and explain the procedures that will be used in the evaluation and the objectives which should be met during the assignment.
4. Reach agreement with the trainee on the specific tasks which can be performed and evaluated during the assignment.
5. Accurately evaluate and record the demonstrated performance of tasks. This is the evaluator's most important responsibility; it provides for the integrity of the performance based qualification system.
6. Complete the appropriate evaluation record in the back of the PTB. If more than one position performance assignment is necessary, the evaluator for each assignment will complete an evaluation record.
7. When all tasks in the PTB have been completed and signed off, complete the verification statement inside the front cover of the PTB. Only the evaluator on the final position performance assignment (the assignment in which all tasks have been evaluated and signed off) will complete the verification statement recommending certification.

E. The Training Specialist

The training specialist can be the individual in the home unit who is responsible for training and qualifications, or a person who holds certification as a training specialist on an incident.

It is the responsibility of the training specialist to:

1. Meet with the trainee and determine the type of assignment which is necessary (position performance assignment or on-the-job training). Consider past experience and training, current qualifications, desired goals and objectives of the assignment. If the trainee does not meet the

prerequisites for the position or does not have the knowledge/skills to perform the tasks of the position, then the position performance assignment must not continue. If the individual meets the prerequisites but does not have the necessary knowledge/skills, it may be possible to provide on-the-job training and reinstate the performance assignment at a later time during the same incident.

2. Identify opportunities for on-the-job training and position performance assignments which meet the trainee's needs and objectives.
3. Work with the incident or home unit to identify and assign qualified evaluators.
4. Initiate a PTB only after acquiring authorization from the appropriate agency official of the home unit.
5. Document all on-the-job training and position performance assignments.
6. Conduct periodic progress reviews to ensure that assignments are proceeding as planned.
7. Conduct a close-out interview with the trainee and the evaluator to ensure that the PTB has been properly completed.

III. SPECIAL CONSIDERATIONS AND EXCEPTIONS

A. Positions for which there are no NWCG Position Task Books:

1. The following positions perform tasks which vary depending on the agency and/or the assignment. Qualification and assignment will be determined by the agency.
 - Agency Representative (AREP)
 - Interagency Resource Representative (IARR)
 - Air Tanker/Fixed Wing Coordinator (ATCO)

B. Functions essential for successful fire use activities.

1. Planning: Essential for completion of prescribed

fire activities. Planning requirements are agency determined.

2. Holding: The planning process will be used to identify appropriate holding resources, and those resources will be obtained from positions identified in this guide.

C. Positions which require a performance assignment on a wildland and/or prescribed fire are:

Identified in Section L, "ICS, Skill and Expanded Dispatch Position Qualifications," of PMS 310-1; designated with an asterisk (*) in Appendix C; and also identified on the cover of each PTB.

D. Positions which utilize the same PTB:

1. The following positions perform the same tasks at different levels of complexity and the same PTB is used. Trainees are required to complete a PTB for each complexity level. When the PTB is initiated, the appropriate level should be identified by crossing out the inappropriate position identifiers on the PTB cover. These positions include:
 - Incident Commander Type 1 & 2 (ICT1&2)
 - Planning Section Chief Type 1 & 2 (PSC1&2)
 - Operations Section Chief Type 1 & 2 (PSC1&2)
 - Logistics Section Chief Type 1 & 2 (LSC1&2)
 - Finance/Administration Section Chief Type 1 & 2 (FSC1&2)
 - Safety Officer Type 1 & 2 (SOF1&2)
 - Information Officer Type 1 & 2 (IOF1&2)
 - Helibase Manager Type 1 & 2 (HEB1&2)
 - Prescribed Fire Burn Boss Type 1 & 2 (RXB1&2)
 - Prescribed Fire Manager Type 1 & 2 (RXM1&2)
2. The strike team leader positions perform the same tasks for different types of resources. The PTB need only be completed once. The qualification in the specific resource is determined by the prerequisite qualification in that resource.
3. The PTB for the single resource boss positions differs from other PTBs. The first set of tasks are common to all the single resource boss

positions. These tasks are the same as those required for the crew boss position. Additional specific tasks are required for the other types of single resource boss positions (Engine, Dozer, Tractor/Plow, Felling, and Firing). When the PTB is issued, the appropriate position(s) should be identified by crossing out the inappropriate positions on the cover. The trainee then needs to be signed off for all of the common tasks as well as those additional tasks which apply to the specific resource. At the discretion of the home unit, once qualified as a single resource boss for a resource, it may not be necessary to recomplete the tasks common to all single resource boss positions in order to become qualified as a single resource boss for another resource.

NOTE: The course, Crew Boss (Single Resource) S-230, is required training for all single resource boss positions. The course was designed for those individuals who would manage any single resource, not just a 20 person handcrew. More importantly, when the current curriculum was designed, it was agreed to drop the course Fire Suppression Tactics S-336 as required training, and incorporate the tactics and fireline safety material from S-336 into the new Crew Boss S-230, and Task Force/Strike Team Leader S-330 courses. Therefore, it is essential that all Single Resource Bosses receive the tactics and fireline safety material contained in the Crew Boss S-230 course.

IV. COMMENTS AND RECOMMENDATIONS

- A. Comments and recommendations on the PTBs and the qualification process should be submitted through the appropriate agency official to the Incident Operations Standards Working Team (IOSWT). While the IOSWT may handle special problems at any time, the planned revision interval will be five (5) years. Users may submit proposed revisions as needs are identified. The IOSWT will review the proposal, consult with subject matter experts, the other NWCG working teams as appropriate and recommend adoption or rejection by the NWCG.

- B. PTBs which may be developed for positions not identified within PMS 310-1, must be submitted to the IOSWT for review and consideration for acceptance into the system.

APPENDIX B

ICS, SKILL, AND

EXPANDED DISPATCH

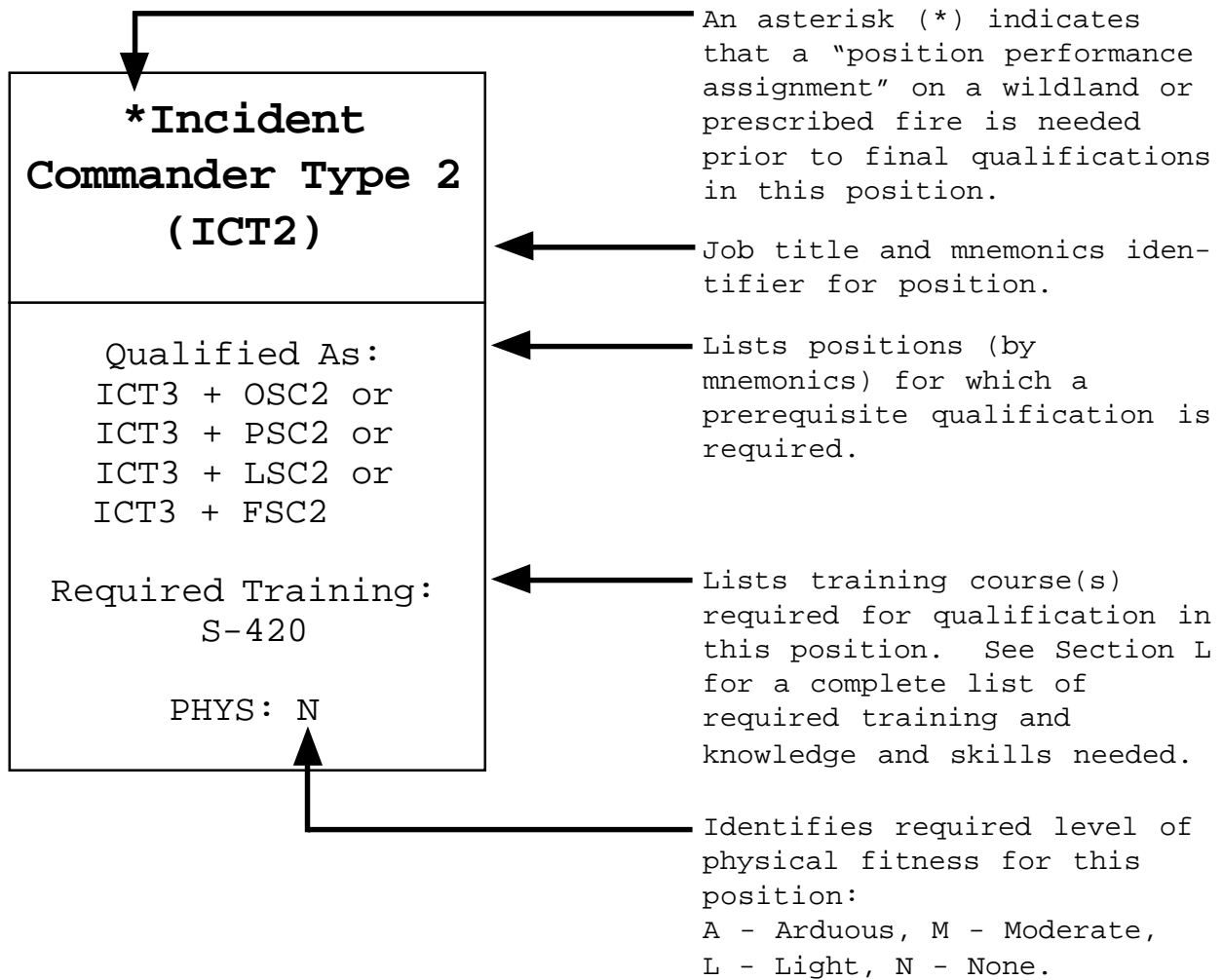
QUALIFICATIONS

FLOW CHARTS

KEY TO QUALIFICATION FLOW CHART

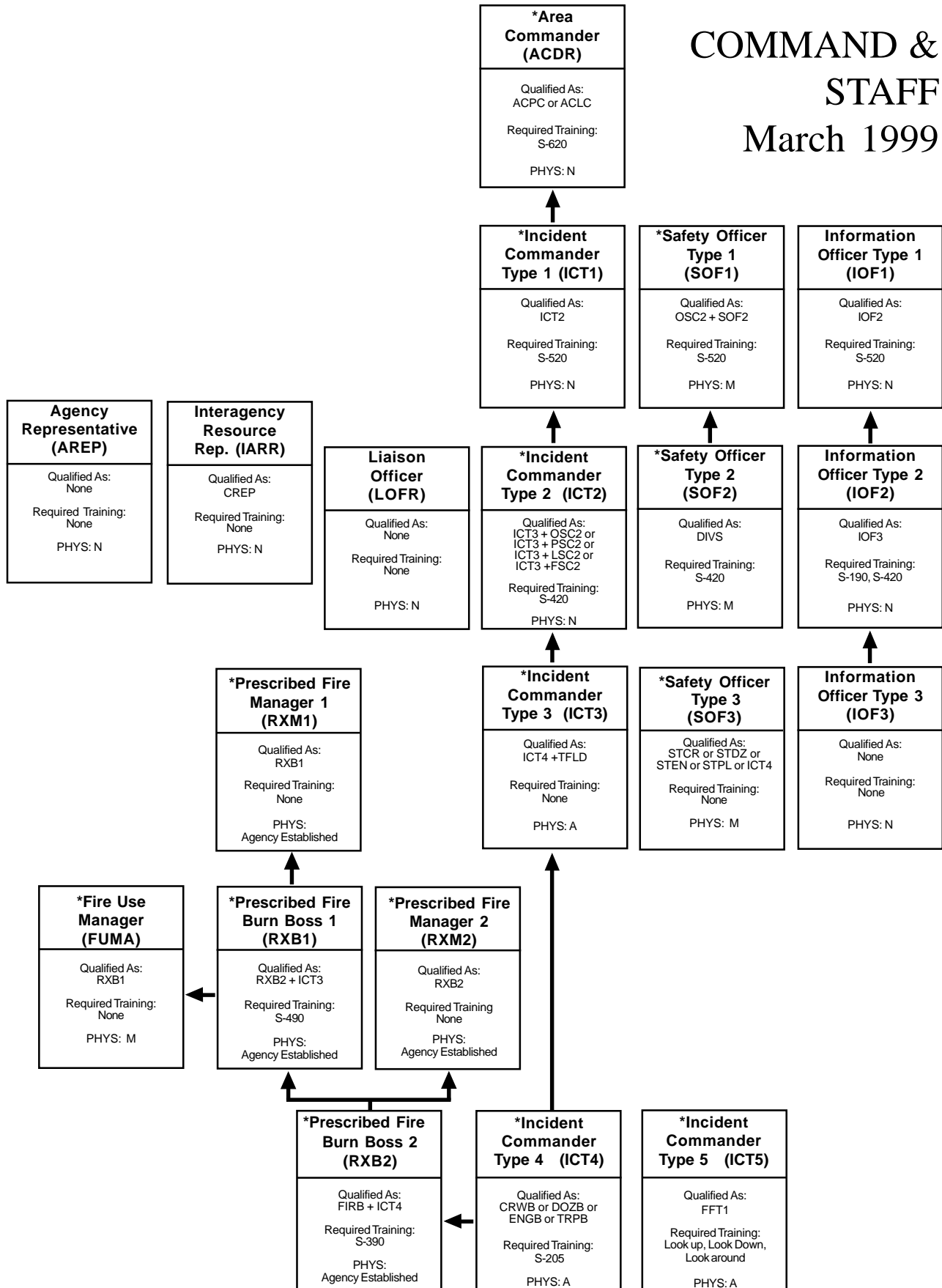
The charts in this appendix show the progression of qualifications from one position to another within the system. These charts are not organization charts.

Each box within the charts contains information pertaining to prerequisite qualifications, training, and physical fitness and should be read as shown in the diagram below:



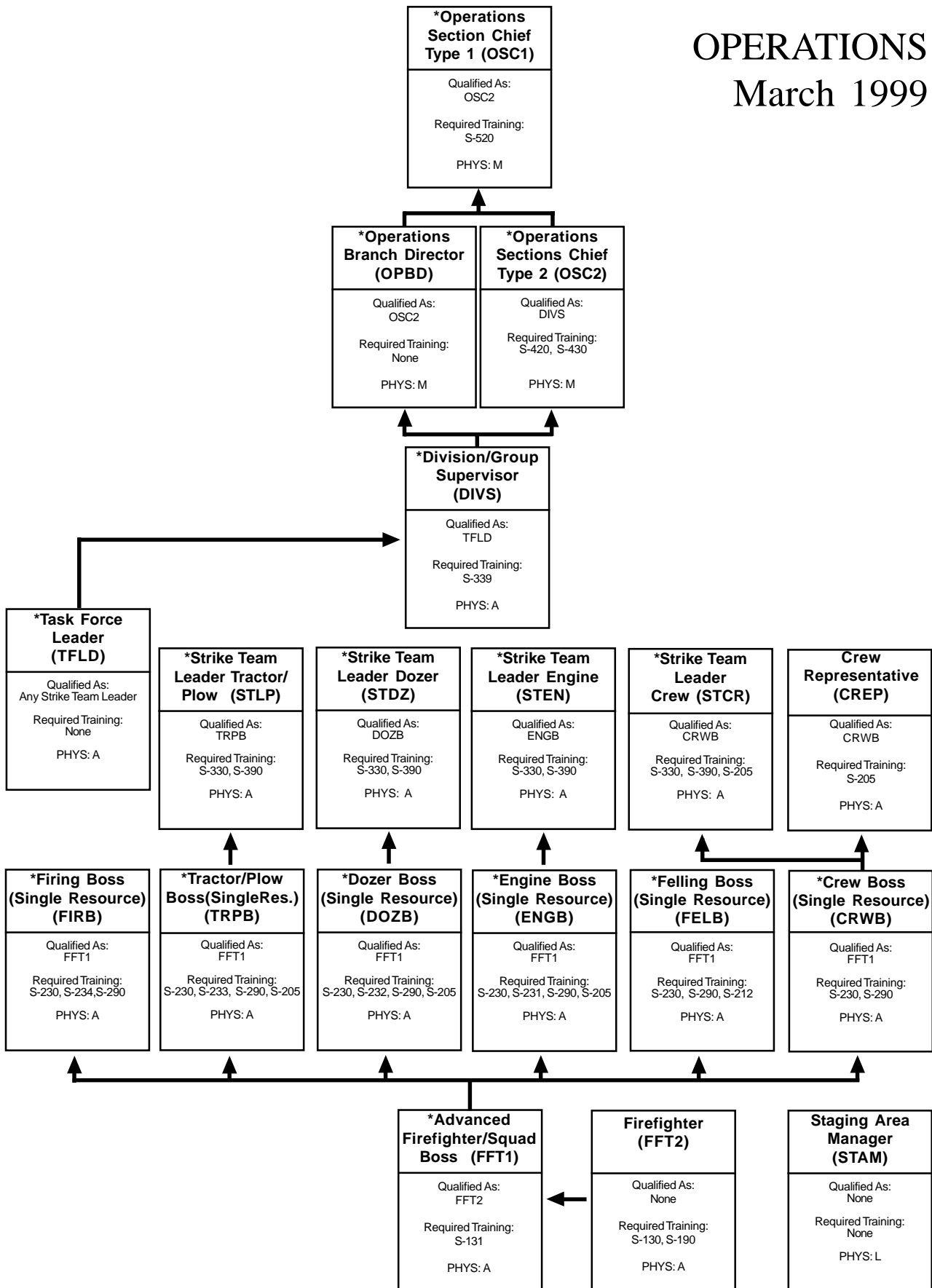
COMMAND & STAFF

March 1999



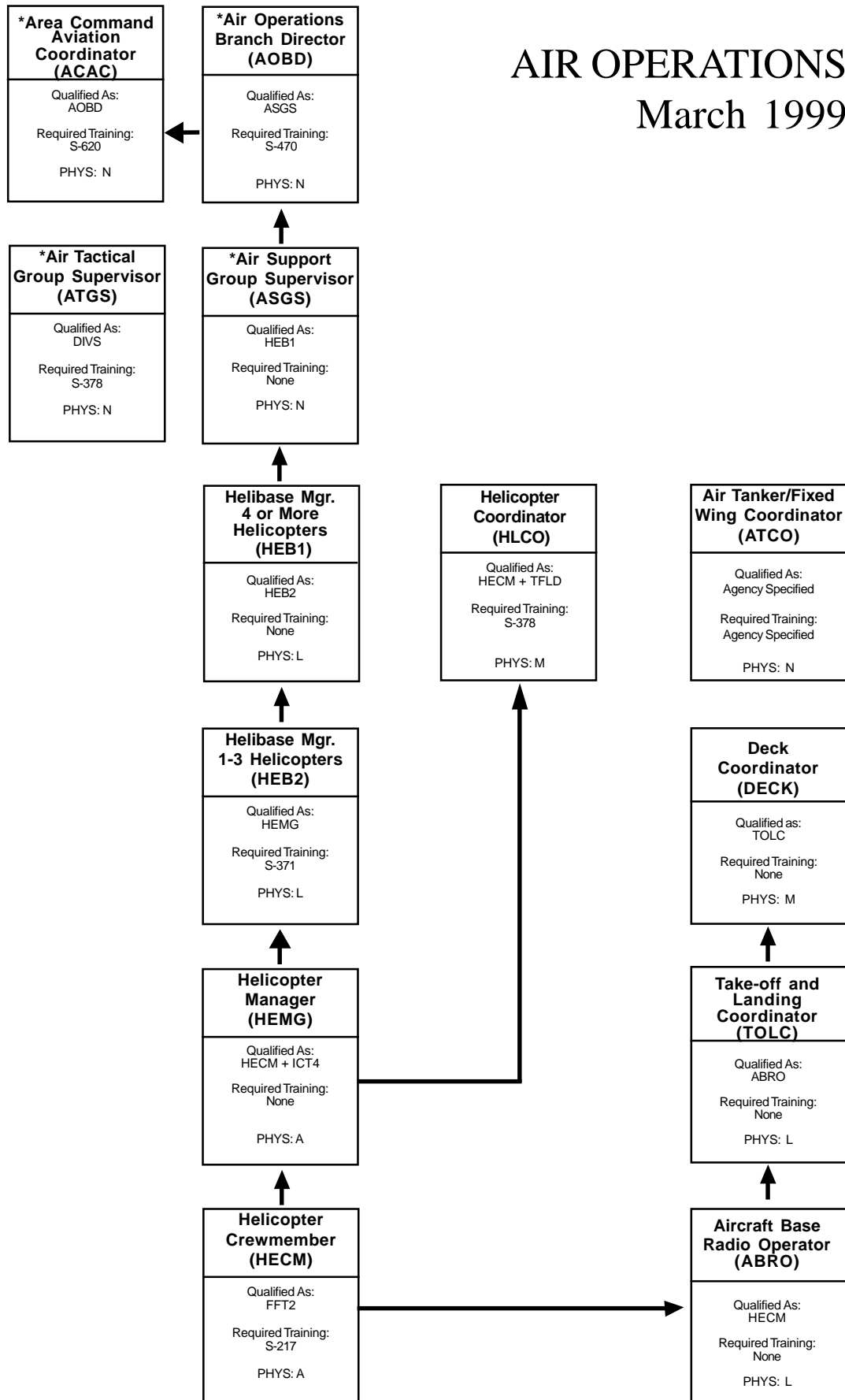
OPERATIONS

March 1999

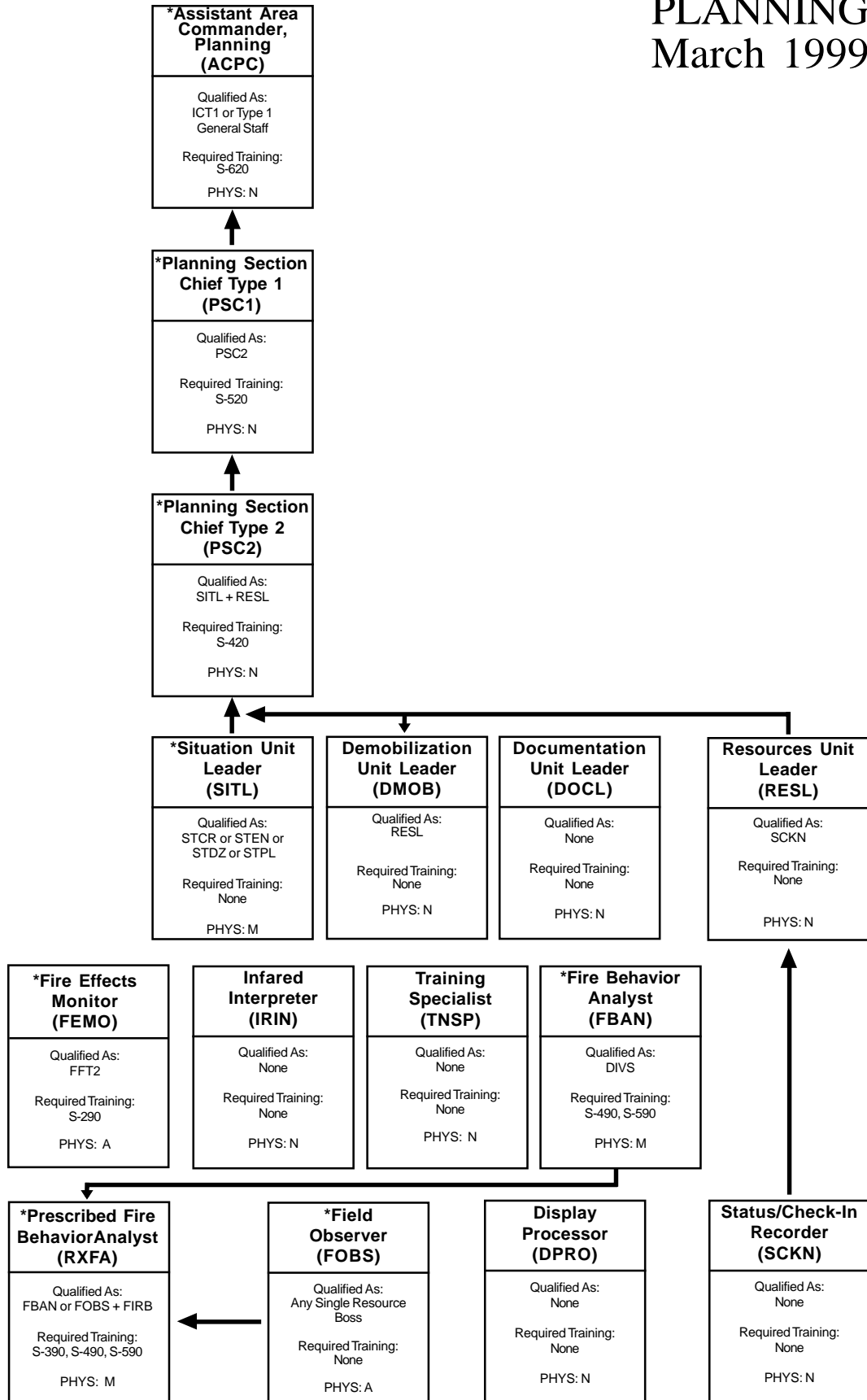


AIR OPERATIONS

March 1999

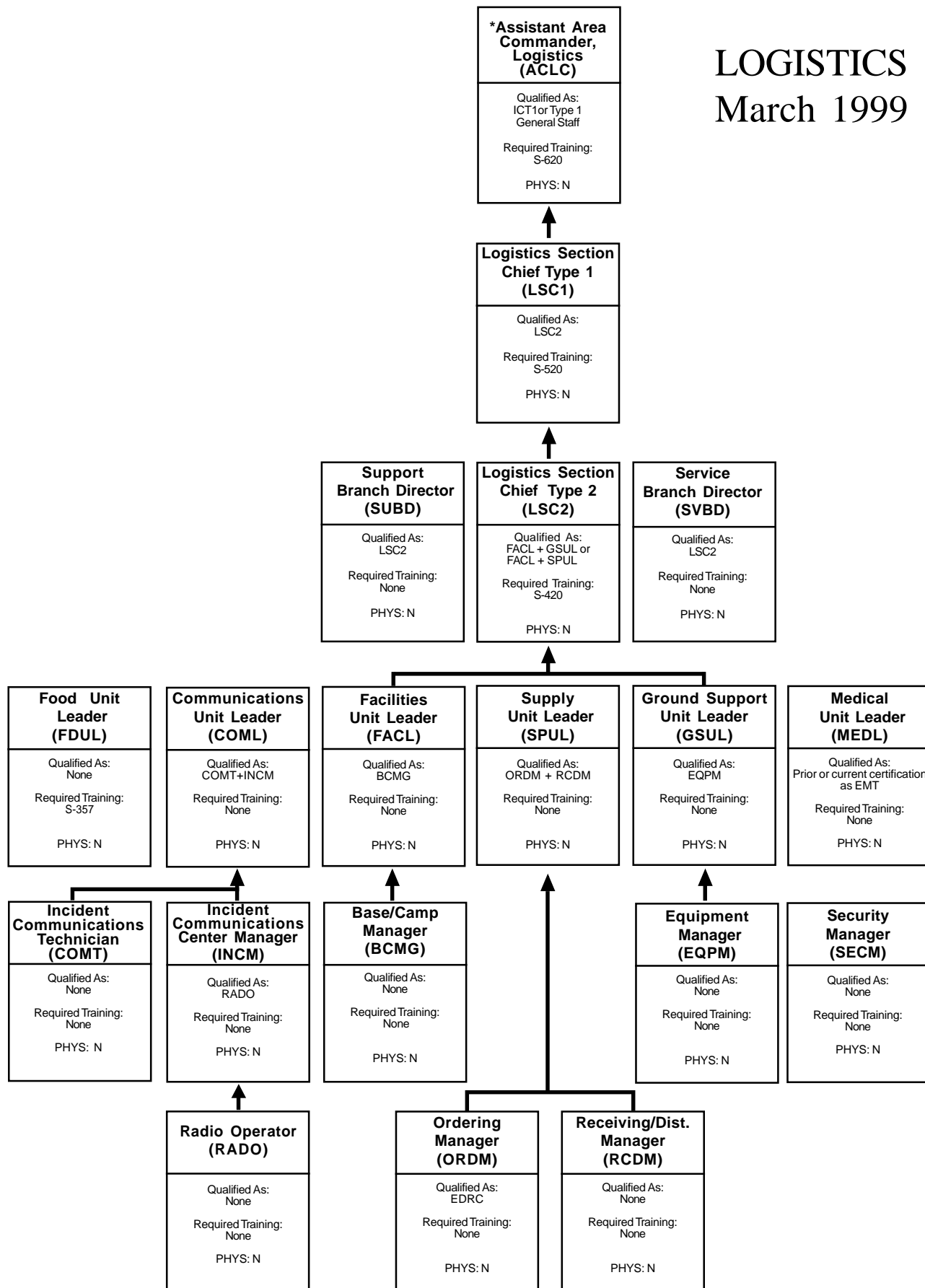


PLANNING March 1999



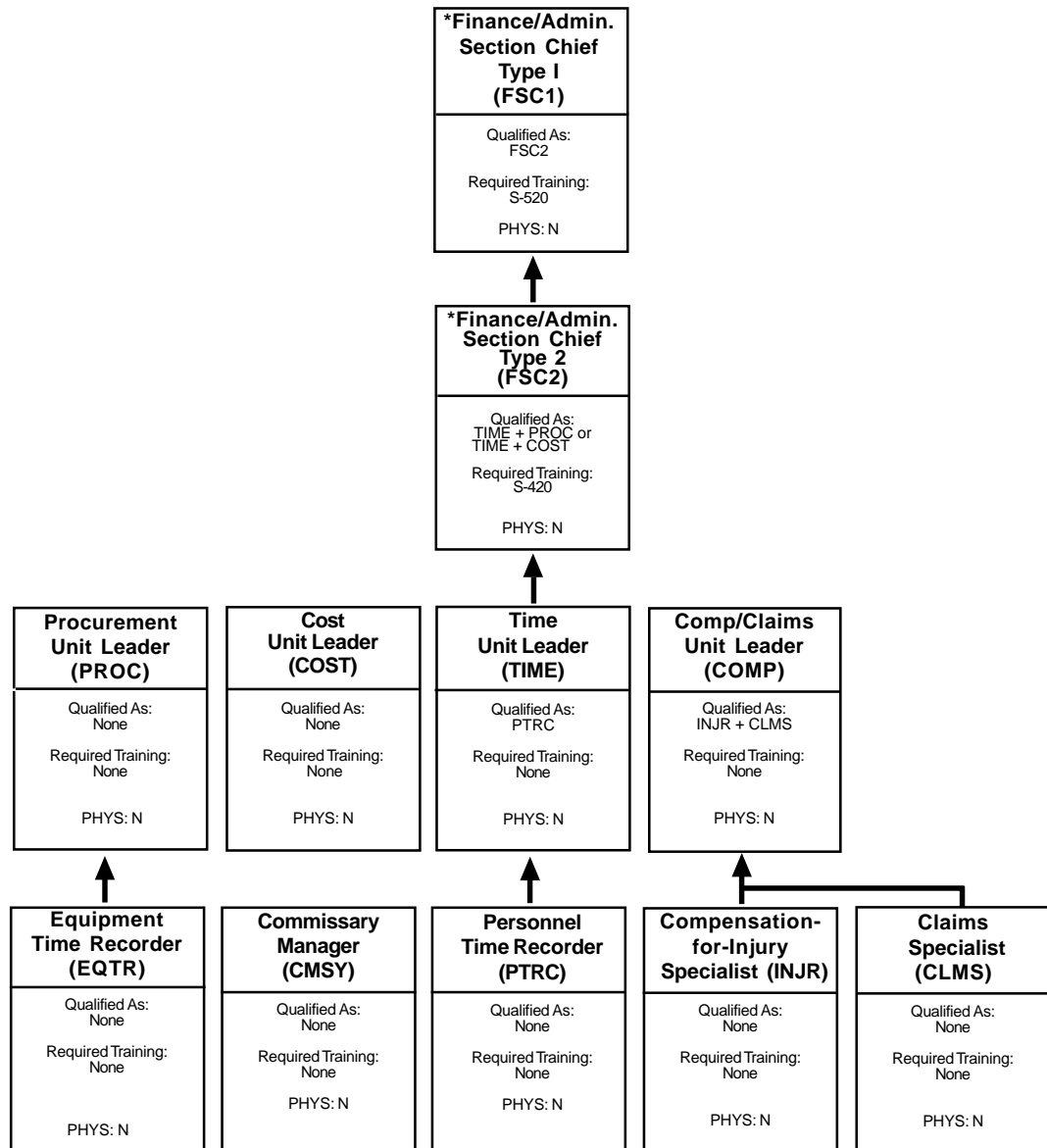
LOGISTICS

March 1999



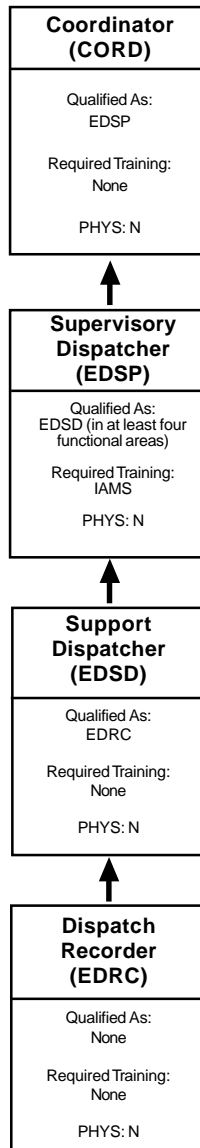
FINANCE/ ADMINISTRATION

March 1999



EXPANDED DISPATCH

March 1999



APPENDIX C

TRAINING COURSES:

ICS Courses = (“I”)

Skill Courses = (“S”)

Prescribed Fire Courses = (“RX”)

Dispatch Courses = (“D”)

Job Aids = (“J”)

TRAINING COURSES

Dispatch Courses

D-105 Entry Level Dispatcher
D-110 Dispatch Recorder

D-310 Support Dispatcher
D-510 Supervisory Dispatcher

ICS Courses

I-100 Introduction to ICS
I-200 Basic ICS
I-300 Intermediate ICS

I-400 Advanced ICS
I-401 Multi-Agency Coordination
I-402 ICS for Executives

Job Aids

J-236 Staging Area Manager
J-252 Ordering Manager
J-253 Receiving and Distribution
Manager
J-254 Base/Camp Manager
J-255 Equipment Manager

J-257 Incident Communications Center
Manager
J-259 Security Manager
J-375 Air Support Group Supervisor
J-342 Documentation Unit Leader
J-375 Air Support Group Supervisor

Note: Job aids may be "S" courses if the development teams find that the conversion of a course to a job aid is not practical.

Prescribed Fire Courses

RX-300 Prescribed Fire
Implementation
RX-340 Introduction to Fire Effects

RX-450 Smoke Management Techniques
RX-540 Applied Fire Effects
RX-580 Advanced Fire Use
Applications

Skill Courses

S-110	Wildland Fire Suppression Orientation for Non-Operations Personnel	S-301	Leadership and Organizational Development
*S-130	Firefighter Training	*S-330	Task Force/Strike Team Leader
*S-131	Advanced Firefighter Training	*S-339	Division/Group Supervisor
*S-190	Introduction to Wildland Fire Behavior	S-346	Situation Unit Leader
S-200	Initial Attack Incident Commander	S-347	Demobilization Unit Leader
S-201	Supervisory Concepts & Techniques	S-348	Resources Unit Leader
S-203	Basic Information Officer	S-354	Facilities Unit Leader
*S-205	Fire Operations in the Urban Interface	S-355	Ground Support Unit Leader
S-211	Portable Pumps and Water Use	S-356	Supply Unit Leader
*S-212	Wildfire Power Saws	*S-357	Food Unit Leader
S-216	Driving for the Fire Service	S-358	Communications Unit Leader
*S-217	Interagency Helicopter Training Guide	S-359	Medical Unit Leader
*S-230	Crew Boss (Single Resource)	S-360	Finance/Administration Unit Leader
*S-231	Engine Boss (Single Resource)	*S-371	Helibase Manager
*S-232	Dozer Boss (Single Resource)	*S-378	Air Tactical Group Supervisor
*S-233	Tractor/Plow Boss (Single Resource)	*S-390	Introduction to Wildland Fire Behavior Calculations
*S-234	Ignition Operations	S-400	Incident Commander
S-244	Field Observer	S-402	Liaison Officer
S-245	Display Processor	S-403	Information Officer
S-248	Status/Check-In Recorder	S-404	Safety Officer
S-258	Communications Equipment and Procedures	*S-420	Command and General Staff
S-260	Interagency Incident Business Management	*S-430	Operations Section Chief
S-261	Applied Interagency Incident Business Management	S-440	Planning Section Chief
S-270	Basic Air Operations	S-443	Infrared Interpreter
*S-290	Intermediate Wildland Fire Behavior	S-445	Training Specialist
S-300	Incident Commander Extended Attack	S-450	Logistics Section Chief
		S-460	Finance/Administration Section Chief
		*S-470	Air Operations Branch Director
		*S-490	Advanced Wildland Fire Behavior Calculations
		*S-491	National Fire Danger Rating System
		*S-492	Long Term Fire Risk Assessment
		*S-493	Farsite: Fire Growth Simulation
		*S-520	Advanced Incident Management
		S-580	Advanced Fire Use Applications
		*S-590	Advanced Fire Behavior Interpretation
		*S-620	Area Command

* Indicates a course that contains critical knowledge and skills required for safe operations. Training in this course or an agency equivalent course with like learning and performance objectives is required. Statistics indicate that lack of this type of knowledge and/or skill may have contributed to accidents.

APPENDIX D

GLOSSARY

GLOSSARY

Agency Equivalence - Agency specific training curriculum or position skills, as determined by an individual agency, which meet or exceed the learning and performance objectives set forth in NWCG curricula or job aids.

Certification - The process whereby an appropriate agency official confirms through the issuance of an incident qualification card that an individual is qualified to perform in a specified position.

Certifying Official - The agency official at the home unit that is responsible for authorizing and granting certification by signing the "Agency Certification" on the inside front cover of the PTB. Only the home unit has the authority to certify an individual's qualifications.

Currency Requirement - The requirement to perform satisfactorily in a specified position within the last five (5) years (three (3) years for aviation and expanded dispatch positions) to maintain qualification for the position.

Evaluator - A person who is certified in the position the trainee is being evaluated in and who is assigned to evaluate a trainee's performance against tasks listed in a PTB. The position qualified evaluator makes a determination as to whether the individual successfully performs a task; signs off on the task in the PTB, if the task is performed correctly; or determines what remedial actions are necessary if the task is not performed correctly. When all tasks in the PTB are successfully completed, (including successful position performance if required), the position qualified evaluator may recommend that the trainee receive certification from their designated agency official.

EXCEPTION: An agency may designate subject matter experts not qualified in the target position to do task evaluations for specific tasks coded "O". An example would be an agency administrative officer could sign off on a Compensation/Claims Unit Leader completing compensation and claims documents.

Final Evaluator - The evaluator and the final evaluator share the same responsibilities. The term, "final evaluator", is used to describe the evaluator on the final position performance assignment. This evaluator checks to ensure that all tasks have been completed and signed off properly and makes recommendation for certification by completing the "Final Evaluator's Verification" on the inside front cover of the PTB.

Fire Use - The use of naturally ignited wildland fire or the application of prescribed fire to meet resource objectives.

ICS Positions - Any position found on the ICS organizational chart in the Operational System Description (OSD), PMS 120-1.

Home Unit - The home unit is the designated agency that employs the individual. This could be a district, county, state, park, reservation or similar entity, and/or the administrator who manages the qualification system.

Initiated Position Task Book(PTB) - "Initiating" a PTB is accomplished by the appropriate agency official of the home unit, whereby that individual signs on the front cover that the trainee is ready for on-the-job training, task evaluation, and/or position performance evaluation. All required training courses must be completed prior to initiation. A PTB may be initiated by a training specialist on an incident with concurrence by the home unit.

Knowledge and Skills Needed - Knowledge and skills needed are training courses or job aids which can help to support a position performance assignment. The knowledge and skills necessary for successful completion of tasks in the position task book are provided in the identified courses, but may also be acquired in a variety of ways, including on-the-job training, work experience, identified formal training as determined by one's agency.

On-The-Job-Training - A training assignment by an individual who has completed required training, has met prerequisite experience for a position, and may not yet be ready for a position performance assignment as outlined in Appendix A, Position Task Book Evaluation.

Other Position Assignments That Will Maintain Currency - Positions at a higher or specified lower level that will meet the currency requirements for a given position (see Section L).

Position Performance Assignment - An assignment in which an individual is being evaluated for tasks found in the position task books as described in Appendix A. Exceptions to the Single Resource Boss and Strike Team Leader positions are identified in Appendix A.

Prerequisite Experience - Documented, satisfactory performance in a specified position needed to qualify for another (usually higher level) position.

Private Contractors - Includes individuals, companies, educational institutions and corporations who provide training, suppression or prescribed fire services for financial reimbursement.

Qualification - Meeting the established standards for a position in order to achieve certification.

Re-certification - Confirmation, through the re-issuance of an incident qualification card, that an individual has regained qualification for a specified position that was lost through a lack of current experience. A key component in the certification or re-certification process is the subjective evaluation by the appropriate agency official of an individual's capability to perform in a position.

Required Training - A course or courses that must be completed prior to initiating a position task book. Training which has been identified as required cannot be challenged. An agency equivalent course may be used as a substitute when the course meets or exceeds a required course's learning and performance objectives.

Task Evaluation - Rating the performance of a trainee against the tasks listed in the PTB. During the assignment a trainee is required to perform the tasks under the supervision and observation of a position qualified evaluator, who signs the task off and completes the "incident experience record."

Technical Specialist - Personnel with special skills. These specialists may be used anywhere within the organization. Most technical specialists are certified in their field or profession.

Trainee - An individual, approved by their agency, who is preparing to qualify for a position. Trainee status requires that all required training courses have been completed prior to initiation of a position task book by the appropriate agency official of the home unit. The trainee is then eligible for on-the-job training, task evaluation and/or position performance evaluation.

Trainer/Coach - The trainer/coach is a position qualified individual who provides instruction to a trainee. This may be in the classroom, on-the-job or on an incident. While many of the requirements of the person are similar to the evaluator, it is important that the roles of training and evaluation remain separate as described in this guide.