

Transmission of material in this release is embargoed until
8:30 a.m. (EDT) Friday, April 1, 2011

USDL-11-0436

Technical information:

Household data: (202) 691-6378 • cpsinfo@bls.gov • www.bls.gov/cps
Establishment data: (202) 691-6555 • cesinfo@bls.gov • www.bls.gov/ces

Media contact: (202) 691-5902 • PressOffice@bls.gov

THE EMPLOYMENT SITUATION – MARCH 2011

Nonfarm payroll employment increased by 216,000 in March, and the **unemployment rate** was little changed at 8.8 percent, the U.S. Bureau of Labor Statistics reported today. Job gains occurred in professional and business services, health care, leisure and hospitality, and mining. Employment in manufacturing continued to trend up.

Chart 1. Unemployment rate, seasonally adjusted, March 2009 – March 2011

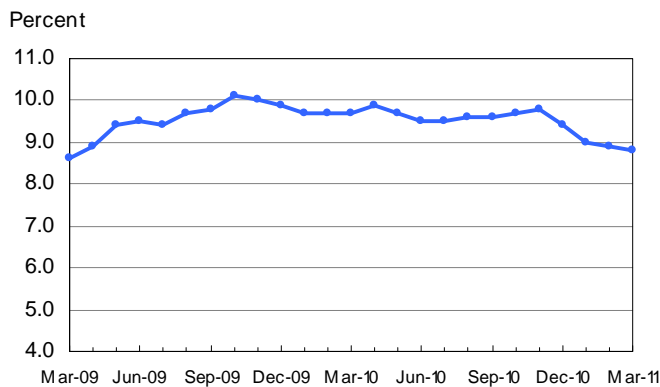
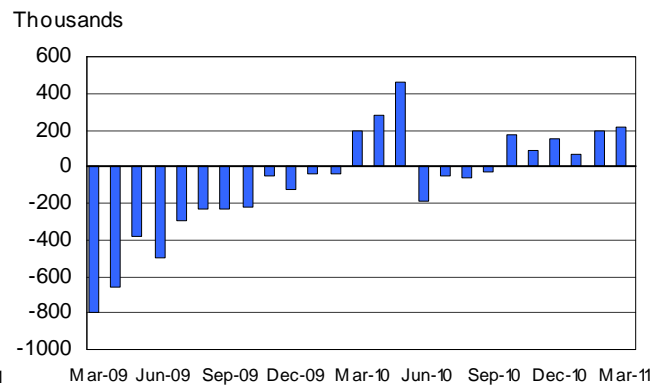


Chart 2. Nonfarm payroll employment over-the-month change, seasonally adjusted, March 2009 – March 2011



Household Survey Data

The number of **unemployed persons** (13.5 million) and the **unemployment rate** (8.8 percent) changed little in March. The labor force also was little changed over the month. Since November 2010, the jobless rate has declined by 1.0 percentage point. (See table A-1.)

Among the **major worker groups**, the unemployment rates for adult men (8.6 percent), adult women (7.7 percent), teenagers (24.5 percent), whites (7.9 percent), blacks (15.5 percent), and Hispanics (11.3 percent) showed little change in March. The jobless rate for Asians was 7.1 percent, not seasonally adjusted. (See tables A-1, A-2, and A-3.)

The number of **job losers and persons who completed temporary jobs**, at 8.2 million, was little changed in March but has fallen by 1.3 million since November 2010. The number of **long-term unemployed** (those jobless for 27 weeks or more) was 6.1 million in March; their share of the unemployed increased from 43.9 to 45.5 percent over the month. (See tables A-11 and A-12.)

In March, the **civilian labor force participation rate** held at 64.2 percent, and the **employment-population ratio**, at 58.5 percent, changed little. (See table A-1.)

The number of persons employed **part time for economic reasons** (sometimes referred to as involuntary part-time workers) was little changed in March, at 8.4 million. These individuals were working part time because their hours had been cut back or because they were unable to find a full-time job. (See table A-8.)

In March, 2.4 million persons were **marginally attached to the labor force**, up slightly from a year earlier. (These data are not seasonally adjusted.) These individuals were not in the labor force, wanted and were available for work, and had looked for a job sometime in the prior 12 months. They were not counted as unemployed because they had not searched for work in the 4 weeks preceding the survey. (See table A-16.)

Among the marginally attached, there were 921,000 **discouraged workers** in March, little changed from a year earlier. (These data are not seasonally adjusted.) Discouraged workers are persons not currently looking for work because they believe no jobs are available for them. The remaining 1.5 million persons marginally attached to the labor force in March had not searched for work in the 4 weeks preceding the survey for reasons such as school attendance or family responsibilities. (See table A-16.)

Establishment Survey Data

Total **nonfarm payroll employment** increased by 216,000 in March. Job gains occurred in several service-providing industries and in mining, and manufacturing employment continued to trend up. Since a recent low in February 2010, total payroll employment has grown by 1.5 million. (See table B-1.)

In March, employment in the service-providing sector continued to expand, led by a gain of 78,000 in **professional and business services**. Most of the gain occurred in temporary help services (+29,000) and in professional and technical services (+35,000).

Health care employment continued to increase in March (+37,000). Over the last 12 months, health care has added 283,000 jobs, or an average of 24,000 jobs per month.

Employment in **leisure and hospitality** rose by 37,000 over the month, with more than two-thirds of the increase in food services and drinking places (+27,000).

Manufacturing employment continued to trend up in March (+17,000). Job gains were concentrated in two durable goods industries—fabricated metal products (+8,000) and machinery (+5,000). Employment in durable goods manufacturing has risen by 243,000 since its most recent low in December 2009.

In March, employment in **mining** increased by 14,000, with much of the gain occurring in support activities for mining (+9,000).

Employment in **local government** continued to trend down over the month. Local government has lost 416,000 jobs since an employment peak in September 2008.

The **average workweek for all employees** on private nonfarm payrolls was unchanged at 34.3 hours in March. The manufacturing workweek for all employees edged down by 0.1 hour to 40.5 hours, while factory overtime was unchanged at 3.3 hours. The average workweek for **production and nonsupervisory employees** on private nonfarm payrolls increased by 0.1 hour to 33.6 hours. (See tables B-2 and B-7.)

In March, **average hourly earnings for all employees** on private nonfarm payrolls were unchanged at \$22.87. Over the past 12 months, average hourly earnings have increased by 1.7 percent. Average hourly earnings of private-sector **production and nonsupervisory employees** edged down by 2 cents over the month to \$19.30. (See tables B-3 and B-8.)

The change in total nonfarm payroll employment for January was revised from +63,000 to +68,000, and the change for February was revised from +192,000 to +194,000.

The Employment Situation for April is scheduled to be released on Friday, May 6, 2011, at 8:30 a.m. (EDT).

HOUSEHOLD DATA

Summary table A. Household data, seasonally adjusted

[Numbers in thousands]

Category	Mar. 2010	Jan. 2011	Feb. 2011	Mar. 2011	Change from: Feb. 2011- Mar. 2011
Employment status					
Civilian noninstitutional population.....	237,159	238,704	238,851	239,000	149
Civilian labor force.....	153,895	153,186	153,246	153,406	160
Participation rate.....	64.9	64.2	64.2	64.2	0.0
Employed.....	138,952	139,323	139,573	139,864	291
Employment-population ratio.....	58.6	58.4	58.4	58.5	0.1
Unemployed.....	14,943	13,863	13,673	13,542	-131
Unemployment rate.....	9.7	9.0	8.9	8.8	-0.1
Not in labor force.....	83,264	85,518	85,605	85,594	-11
Unemployment rates					
Total, 16 years and over.....	9.7	9.0	8.9	8.8	-0.1
Adult men (20 years and over).....	10.0	8.8	8.7	8.6	-0.1
Adult women (20 years and over).....	8.0	7.9	8.0	7.7	-0.3
Teenagers (16 to 19 years).....	26.0	25.7	23.9	24.5	0.6
White.....	8.7	8.0	8.0	7.9	-0.1
Black or African American.....	16.5	15.7	15.3	15.5	0.2
Asian (not seasonally adjusted).....	7.5	6.9	6.8	7.1	-
Hispanic or Latino ethnicity.....	12.5	11.9	11.6	11.3	-0.3
Total, 25 years and over.....	8.3	7.6	7.6	7.4	-0.2
Less than a high school diploma.....	14.4	14.2	13.9	13.7	-0.2
High school graduates, no college.....	10.8	9.4	9.5	9.5	0.0
Some college or associate degree.....	8.2	8.0	7.8	7.4	-0.4
Bachelor's degree and higher.....	4.8	4.2	4.3	4.4	0.1
Reason for unemployment					
Job losers and persons who completed temporary jobs.....	9,368	8,519	8,334	8,209	-125
Job leavers.....	893	910	898	896	-2
Reentrants.....	3,523	3,357	3,352	3,262	-90
New entrants.....	1,185	1,351	1,337	1,360	23
Duration of unemployment					
Less than 5 weeks.....	2,654	2,678	2,390	2,449	59
5 to 14 weeks.....	3,210	3,016	3,094	2,914	-180
15 to 26 weeks.....	2,449	2,285	2,179	1,957	-222
27 weeks and over.....	6,517	6,210	5,993	6,122	129
Employed persons at work part time					
Part time for economic reasons.....	9,012	8,407	8,340	8,433	93
Slack work or business conditions.....	6,174	5,771	5,630	5,595	-35
Could only find part-time work.....	2,351	2,510	2,415	2,332	-83
Part time for noneconomic reasons.....	18,334	17,929	18,220	18,417	197
Persons not in the labor force (not seasonally adjusted)					
Marginally attached to the labor force.....	2,255	2,800	2,730	2,434	-
Discouraged workers.....	994	993	1,020	921	-

- Over-the-month changes are not displayed for not seasonally adjusted data.

NOTE: Persons whose ethnicity is identified as Hispanic or Latino may be of any race. Detail for the seasonally adjusted data shown in this table will not necessarily add to totals because of the independent seasonal adjustment of the various series. Updated population controls are introduced annually with the release of January data.

ESTABLISHMENT DATA
Summary table B. Establishment data, seasonally adjusted

Category	Mar. 2010	Jan. 2011	Feb. 2011 ^p	Mar. 2011 ^p
EMPLOYMENT BY SELECTED INDUSTRY (Over-the-month change, in thousands)				
Total nonfarm.....	192	68	194	216
Total private.....	144	94	240	230
Goods-producing.....	34	38	73	31
Mining and logging.....	8	5	4	15
Construction.....	17	-20	37	-1
Manufacturing.....	9	53	32	17
Durable goods ¹	16	57	27	17
Motor vehicles and parts.....	2.2	19.6	0.0	3.2
Nondurable goods.....	-7	-4	5	0
Private service-providing ¹	110	56	167	199
Wholesale trade.....	1.5	12.9	13.6	14.1
Retail trade.....	24.9	30.5	-7.8	17.7
Transportation and warehousing.....	8.3	-47.2	18.1	-0.1
Information.....	-13	-7	-2	-4
Financial activities.....	-14	-10	-3	6
Professional and business services ¹	2	51	44	78
Temporary help services.....	30.0	-1.1	22.7	28.8
Education and health services ¹	56	29	41	45
Health care and social assistance.....	43.3	17.9	34.1	44.5
Leisure and hospitality.....	31	-3	48	37
Other services.....	14	2	14	5
Government.....	48	-26	-46	-14
WOMEN AND PRODUCTION AND NONSUPERVISORY EMPLOYEES AS A PERCENT OF ALL EMPLOYEES ²				
Total nonfarm women employees.....	49.9	49.6	49.6	49.6
Total private women employees.....	48.5	48.1	48.1	48.1
Total private production and nonsupervisory employees.....	82.4	82.4	82.4	82.4
HOURS AND EARNINGS ALL EMPLOYEES				
Total private				
Average weekly hours.....	34.1	34.2	34.3	34.3
Average hourly earnings.....	\$ 22.48	\$ 22.86	\$ 22.87	\$ 22.87
Average weekly earnings.....	\$766.57	\$781.81	\$784.44	\$784.44
Index of aggregate weekly hours (2007=100) ³	91.4	92.6	93.1	93.3
Over-the-month percent change.....	0.4	0.0	0.5	0.2
Index of aggregate weekly payrolls (2007=100) ⁴	97.9	101.0	101.6	101.8
Over-the-month percent change.....	0.4	0.5	0.6	0.2
HOURS AND EARNINGS PRODUCTION AND NONSUPERVISORY EMPLOYEES				
Total private				
Average weekly hours.....	33.3	33.4	33.5	33.6
Average hourly earnings.....	\$ 18.93	\$ 19.31	\$ 19.32	\$ 19.30
Average weekly earnings.....	\$630.37	\$644.95	\$647.22	\$648.48
Index of aggregate weekly hours (2002=100) ³	98.1	99.4	99.9	100.5
Over-the-month percent change.....	0.5	-0.2	0.5	0.6
Index of aggregate weekly payrolls (2002=100) ⁴	124.0	128.2	129.0	129.6
Over-the-month percent change.....	0.5	0.2	0.6	0.5
DIFFUSION INDEX (Over 1-month span) ⁵				
Total private.....	58.8	60.5	68.7	62.4
Manufacturing.....	53.7	73.5	66.0	63.0

1 Includes other industries, not shown separately.

2 Data relate to production employees in mining and logging and manufacturing, construction employees in construction, and nonsupervisory employees in the service-providing industries.

3 The indexes of aggregate weekly hours are calculated by dividing the current month's estimates of aggregate hours by the corresponding annual average aggregate hours.

4 The indexes of aggregate weekly payrolls are calculated by dividing the current month's estimates of aggregate weekly payrolls by the corresponding annual average aggregate weekly payrolls.

5 Figures are the percent of industries with employment increasing plus one-half of the industries with unchanged employment, where 50 percent indicates an equal balance between industries with increasing and decreasing employment.

p Preliminary

Frequently Asked Questions about Employment and Unemployment Estimates

Why are there two monthly measures of employment?

The household survey and establishment survey both produce sample-based estimates of employment and both have strengths and limitations. The establishment survey employment series has a smaller margin of error on the measurement of month-to-month change than the household survey because of its much larger sample size. An over-the-month employment change of about 100,000 is statistically significant in the establishment survey, while the threshold for a statistically significant change in the household survey is about 400,000. However, the household survey has a more expansive scope than the establishment survey because it includes the self-employed, unpaid family workers, agricultural workers, and private household workers, who are excluded by the establishment survey. The household survey also provides estimates of employment for demographic groups.

Are undocumented immigrants counted in the surveys?

It is likely that both surveys include at least some undocumented immigrants. However, neither the establishment nor the household survey is designed to identify the legal status of workers. Therefore, it is not possible to determine how many are counted in either survey. The establishment survey does not collect data on the legal status of workers. The household survey does include questions which identify the foreign and native born, but it does not include questions about the legal status of the foreign born.

Why does the establishment survey have revisions?

The establishment survey revises published estimates to improve its data series by incorporating additional information that was not available at the time of the initial publication of the estimates. The establishment survey revises its initial monthly estimates twice, in the immediately succeeding 2 months, to incorporate additional sample receipts from respondents in the survey and recalculated seasonal adjustment factors. For more information on the monthly revisions, please visit www.bls.gov/ces/cesrevinfo.htm.

On an annual basis, the establishment survey incorporates a benchmark revision that re-anchors estimates to nearly complete employment counts available from unemployment insurance tax records. The benchmark helps to control for sampling and modeling errors in the estimates. For more information on the annual benchmark revision, please visit www.bls.gov/web/cesbmart.htm.

Does the establishment survey sample include small firms?

Yes; about 40 percent of the establishment survey sample is comprised of business establishments with fewer than 20 employees. The establishment survey sample is designed to maximize the reliability of the total nonfarm employment estimate; firms from all size classes and industries are appropriately sampled to achieve that goal.

Does the establishment survey account for employment from new businesses?

Yes; monthly establishment survey estimates include an adjustment to account for the net employment change generated by business births and deaths. The adjustment comes from an econometric model that forecasts the monthly net jobs impact of business births and deaths based on the actual past values of the net impact that can be observed with a lag from the Quarterly Census of Employment and Wages. The

establishment survey uses modeling rather than sampling for this purpose because the survey is not immediately able to bring new businesses into the sample. There is an unavoidable lag between the birth of a new firm and its appearance on the sampling frame and availability for selection. BLS adds new businesses to the survey twice a year.

Is the count of unemployed persons limited to just those people receiving unemployment insurance benefits?

No; the estimate of unemployment is based on a monthly sample survey of households. All persons who are without jobs and are actively seeking and available to work are included among the unemployed. (People on temporary layoff are included even if they do not actively seek work.) There is no requirement or question relating to unemployment insurance benefits in the monthly survey.

Does the official unemployment rate exclude people who have stopped looking for work?

Yes; however, there are separate estimates of persons outside the labor force who want a job, including those who have stopped looking because they believe no jobs are available (discouraged workers). In addition, alternative measures of labor underutilization (some of which include discouraged workers and other groups not officially counted as unemployed) are published each month in The Employment Situation news release.

How can unusually severe weather affect employment and hours estimates?

In the establishment survey, the reference period is the pay period that includes the 12th of the month. Unusually severe weather is more likely to have an impact on average weekly hours than on employment. Average weekly hours are estimated for paid time during the pay period, including pay for holidays, sick leave, or other time off. The impact of severe weather on hours estimates typically, but not always, results in a reduction in average weekly hours. For example, some employees may be off work for part of the pay period and not receive pay for the time missed, while some workers, such as those dealing with cleanup or repair, may work extra hours.

In order for severe weather conditions to reduce the estimate of payroll employment, employees have to be off work without pay for the entire pay period. About half of all employees in the payroll survey have a 2-week, semi-monthly, or monthly pay period. Employees who receive pay for any part of the pay period, even 1 hour, are counted in the payroll employment figures. It is not possible to quantify the effect of extreme weather on estimates of employment from the establishment survey.

In the household survey, the reference period is generally the calendar week that includes the 12th of the month. Persons who miss the entire week's work for weather-related events are counted as employed whether or not they are paid for the time off. The household survey collects data on the number of persons who usually work full time but had reduced hours, or had a job but were not at work the entire week, due to bad weather. Current and historical data are available on the household survey's most requested statistics page at <http://data.bls.gov/cgi-bin/surveymost?ln>.

Technical Note

This news release presents statistics from two major surveys, the Current Population Survey (household survey) and the Current Employment Statistics survey (establishment survey). The household survey provides information on the labor force, employment, and unemployment that appears in the "A" tables, marked HOUSEHOLD DATA. It is a sample survey of about 60,000 households conducted by the U.S. Census Bureau for the U.S. Bureau of Labor Statistics (BLS).

The establishment survey provides information on employment, hours, and earnings of employees on nonfarm payrolls; the data appear in the "B" tables, marked ESTABLISHMENT DATA. BLS collects these data each month from the payroll records of a sample of nonagricultural business establishments. The sample includes about 140,000 businesses and government agencies representing approximately 410,000 worksites and is drawn from a sampling frame of roughly 8.9 million unemployment insurance tax accounts. The active sample includes approximately one-third of all nonfarm payroll employees.

For both surveys, the data for a given month relate to a particular week or pay period. In the household survey, the reference period is generally the calendar week that contains the 12th day of the month. In the establishment survey, the reference period is the pay period including the 12th, which may or may not correspond directly to the calendar week.

Coverage, definitions, and differences between surveys

Household survey. The sample is selected to reflect the entire civilian noninstitutional population. Based on responses to a series of questions on work and job search activities, each person 16 years and over in a sample household is classified as employed, unemployed, or not in the labor force.

People are classified as *employed* if they did any work at all as paid employees during the reference week; worked in their own business, profession, or on their own farm; or worked without pay at least 15 hours in a family business or farm. People are also counted as employed if they were temporarily absent from their jobs because of illness, bad weather, vacation, labor-management disputes, or personal reasons.

People are classified as *unemployed* if they meet all of the following criteria: they had no employment during the reference week; they were available for work at that time; and they made specific efforts to find employment sometime during the 4-week period ending with the reference week. Persons laid off from a job and expecting recall need not be looking for work to be counted as unemployed. The unemployment data derived from the household survey in no way depend upon the eligibility for or receipt of unemployment insurance benefits.

The *civilian labor force* is the sum of employed and unemployed persons. Those not classified as employed or unemployed are *not in the labor force*. The *unemployment rate* is the number unemployed as a percent of the labor force. The *labor force participation rate* is the labor force as a percent of the population, and the *employment-population ratio* is the employed as a percent of the population. Additional information about the household survey can be found at www.bls.gov/cps/documentation.htm.

Establishment survey. The sample establishments are drawn from private nonfarm businesses such as factories, offices, and stores, as well as from federal, state, and local government entities. *Employees on nonfarm payrolls* are those who received pay for any part of the reference pay period, including persons on paid leave. Persons are counted in each job they hold. *Hours and earnings* data are produced for the private sector for all employees and for production and nonsupervisory employees. *Production and nonsupervisory employees* are defined as production and related employees in manufacturing and mining and logging, construction workers in construction, and non-supervisory employees in private service-providing industries.

Industries are classified on the basis of an establishment's principal activity in accordance with the 2007 version of the North American Industry Classification System. Additional information about the establishment survey can be found at www.bls.gov/ces/#technical.

Differences in employment estimates. The numerous conceptual and methodological differences between the household and establishment surveys result in important distinctions in the employment estimates derived from the surveys. Among these are:

- The household survey includes agricultural workers, the self-employed, unpaid family workers, and private household workers among the employed. These groups are excluded from the establishment survey.
- The household survey includes people on unpaid leave among the employed. The establishment survey does not.
- The household survey is limited to workers 16 years of age and older. The establishment survey is not limited by age.
- The household survey has no duplication of individuals, because individuals are counted only once, even if they hold more than one job. In the establishment survey, employees working at more than one job and thus appearing on more than one payroll are counted separately for each appearance.

Seasonal adjustment

Over the course of a year, the size of the nation's labor force and the levels of employment and unemployment undergo regularly occurring fluctuations. These events may result from seasonal changes in weather, major holidays, and the opening and closing of schools. The effect of such seasonal variation can be very large.

Because these seasonal events follow a more or less regular pattern each year, their influence on the level of a series can be tempered by adjusting for regular seasonal variation. These adjustments make nonseasonal developments, such as declines in employment or increases in the participation of women in the labor force, easier to spot. For example, in the household survey, the large number of youth entering the labor force each June is likely to obscure any other changes that have taken place relative to May, making it difficult to determine if the level of economic activity has risen or declined. Similarly, in the establishment survey, payroll employment in education declines by about 20 percent at the end of the spring term and later rises with the start of the fall term, obscuring the underlying employment trends in the industry. Because seasonal employment changes at the end and beginning of the school year can be estimated, the statistics can be adjusted to make underlying employment patterns more discernable. The seasonally adjusted figures provide a more useful tool with which to analyze changes in month-to-month economic activity.

Many seasonally adjusted series are independently adjusted in both the household and establishment surveys. However, the adjusted series for many major estimates, such as total payroll employment, employment in most major sectors, total employment, and unemployment are computed by aggregating independently adjusted component series. For example, total unemployment is derived by summing the adjusted series for four major age-sex components; this differs from the unemployment estimate that would be obtained by directly adjusting the total or by combining the duration, reasons, or more detailed age categories.

For both the household and establishment surveys, a concurrent seasonal adjustment methodology is used in which new seasonal factors are calculated each month using all relevant data, up to and including the data for the current month. In the household survey, new seasonal factors are used to adjust only the current month's data. In the establishment survey, however, new seasonal factors are used each month to adjust the three most recent monthly estimates. The prior 2 months are routinely revised to incorporate additional sample reports and recalculated seasonal adjustment factors. In both surveys, 5-year revisions to historical data are made once a year.

Reliability of the estimates

Statistics based on the household and establishment surveys are subject to both sampling and nonsampling

error. When a sample rather than the entire population is surveyed, there is a chance that the sample estimates may differ from the "true" population values they represent. The exact difference, or *sampling error*, varies depending on the particular sample selected, and this variability is measured by the standard error of the estimate. There is about a 90-percent chance, or level of confidence, that an estimate based on a sample will differ by no more than 1.6 standard errors from the "true" population value because of sampling error. BLS analyses are generally conducted at the 90-percent level of confidence.

For example, the confidence interval for the monthly change in total nonfarm employment from the establishment survey is on the order of plus or minus 100,000. Suppose the estimate of nonfarm employment increases by 50,000 from one month to the next. The 90-percent confidence interval on the monthly change would range from -50,000 to +150,000 (50,000 +/- 100,000). These figures do not mean that the sample results are off by these magnitudes, but rather that there is about a 90-percent chance that the "true" over-the-month change lies within this interval. Since this range includes values of less than zero, we could not say with confidence that nonfarm employment had, in fact, increased that month. If, however, the reported nonfarm employment rise was 250,000, then all of the values within the 90-percent confidence interval would be greater than zero. In this case, it is likely (at least a 90-percent chance) that nonfarm employment had, in fact, risen that month. At an unemployment rate of around 5.5 percent, the 90-percent confidence interval for the monthly change in unemployment as measured by the household survey is about +/- 280,000, and for the monthly change in the unemployment rate it is about +/- 0.19 percentage point.

In general, estimates involving many individuals or establishments have lower standard errors (relative to the size of the estimate) than estimates which are based on a small number of observations. The precision of estimates also is improved when the data are cumulated over time, such as for quarterly and annual averages.

The household and establishment surveys are also affected by *nonsampling error*, which can occur for many reasons, including the failure to sample a segment of the population, inability to obtain information for all respondents in the sample, inability or unwillingness of respondents to provide correct information on a timely basis, mistakes made by respondents, and errors made in the collection or processing of the data.

For example, in the establishment survey, estimates for the most recent 2 months are based on incomplete returns; for this reason, these estimates are labeled preliminary in the tables. It is only after two successive revisions to a monthly estimate, when nearly all sample reports have been received, that the estimate is considered final.

Another major source of nonsampling error in the establishment survey is the inability to capture, on a timely basis, employment generated by new firms. To correct for this systematic underestimation of employment growth, an estimation procedure with two components is used to

account for business births. The first component excludes employment losses from business deaths from sample-based estimation in order to offset the missing employment gains from business births. This is incorporated into the sample-based estimation procedure by simply not reflecting sample units going out of business, but imputing to them the same employment trend as the other firms in the sample. This procedure accounts for most of the net birth/death employment.

The second component is an ARIMA time series model designed to estimate the residual net birth/death employment not accounted for by the imputation. The historical time series used to create and test the ARIMA model was derived from the unemployment insurance universe micro-level database, and reflects the actual residual net of births and deaths over the past 5 years.

The sample-based estimates from the establishment survey are adjusted once a year (on a lagged basis) to

universe counts of payroll employment obtained from administrative records of the unemployment insurance program. The difference between the March sample-based employment estimates and the March universe counts is known as a benchmark revision, and serves as a rough proxy for total survey error. The new benchmarks also incorporate changes in the classification of industries. Over the past decade, absolute benchmark revisions for total nonfarm employment have averaged 0.3 percent, with a range from -0.7 to 0.6 percent.

Other information

Information in this release will be made available to sensory impaired individuals upon request. Voice phone: (202) 691-5200; Federal Relay Service: (800) 877-8339.

HOUSEHOLD DATA

Table A-1. Employment status of the civilian population by sex and age

[Numbers in thousands]

Employment status, sex, and age	Not seasonally adjusted			Seasonally adjusted ¹					
	Mar. 2010	Feb. 2011	Mar. 2011	Mar. 2010	Nov. 2010	Dec. 2010	Jan. 2011	Feb. 2011	Mar. 2011
TOTAL									
Civilian noninstitutional population.....	237,159	238,851	239,000	237,159	238,715	238,889	238,704	238,851	239,000
Civilian labor force.....	153,660	152,635	153,022	153,895	153,950	153,690	153,186	153,246	153,406
Participation rate.....	64.8	63.9	64.0	64.9	64.5	64.3	64.2	64.2	64.2
Employed.....	137,983	138,093	138,962	138,952	138,909	139,206	139,323	139,573	139,864
Employment-population ratio.....	58.2	57.8	58.1	58.6	58.2	58.3	58.4	58.4	58.5
Unemployed.....	15,678	14,542	14,060	14,943	15,041	14,485	13,863	13,673	13,542
Unemployment rate.....	10.2	9.5	9.2	9.7	9.8	9.4	9.0	8.9	8.8
Not in labor force.....	83,499	86,216	85,977	83,264	84,765	85,199	85,518	85,605	85,594
Persons who currently want a job.....	5,719	6,405	6,250	5,996	6,248	6,471	6,410	6,410	6,509
Men, 16 years and over									
Civilian noninstitutional population.....	114,821	115,907	115,988	114,821	115,640	115,731	115,828	115,907	115,988
Civilian labor force.....	81,949	81,360	81,491	81,942	81,986	81,845	81,544	81,720	81,674
Participation rate.....	71.4	70.2	70.3	71.4	70.9	70.7	70.4	70.5	70.4
Employed.....	72,253	72,796	73,187	73,163	73,337	73,600	73,800	74,122	74,108
Employment-population ratio.....	62.9	62.8	63.1	63.7	63.4	63.6	63.7	63.9	63.9
Unemployed.....	9,696	8,564	8,304	8,778	8,649	8,245	7,744	7,598	7,566
Unemployment rate.....	11.8	10.5	10.2	10.7	10.5	10.1	9.5	9.3	9.3
Not in labor force.....	32,872	34,548	34,497	32,879	33,653	33,886	34,284	34,187	34,313
Men, 20 years and over									
Civilian noninstitutional population.....	106,198	107,292	107,381	106,198	107,114	107,216	107,203	107,292	107,381
Civilian labor force.....	79,059	78,672	78,788	78,841	78,980	78,906	78,506	78,795	78,764
Participation rate.....	74.4	73.3	73.4	74.2	73.7	73.6	73.2	73.4	73.4
Employed.....	70,238	70,842	71,207	70,977	71,130	71,480	71,589	71,954	71,959
Employment-population ratio.....	66.1	66.0	66.3	66.8	66.4	66.7	66.8	67.1	67.0
Unemployed.....	8,821	7,829	7,581	7,864	7,849	7,426	6,917	6,841	6,805
Unemployment rate.....	11.2	10.0	9.6	10.0	9.9	9.4	8.8	8.7	8.6
Not in labor force.....	27,139	28,620	28,593	27,357	28,134	28,310	28,698	28,497	28,617
Women, 16 years and over									
Civilian noninstitutional population.....	122,339	122,944	123,012	122,339	123,075	123,158	122,876	122,944	123,012
Civilian labor force.....	71,712	71,275	71,532	71,954	71,964	71,845	71,642	71,526	71,732
Participation rate.....	58.6	58.0	58.1	58.8	58.5	58.3	58.3	58.2	58.3
Employed.....	65,730	65,297	65,775	65,789	65,572	65,605	65,523	65,451	65,756
Employment-population ratio.....	53.7	53.1	53.5	53.8	53.3	53.3	53.3	53.2	53.5
Unemployed.....	5,982	5,978	5,756	6,165	6,392	6,240	6,119	6,075	5,976
Unemployment rate.....	8.3	8.4	8.0	8.6	8.9	8.7	8.5	8.5	8.3
Not in labor force.....	50,627	51,668	51,481	50,385	51,112	51,313	51,234	51,418	51,280
Women, 20 years and over									
Civilian noninstitutional population.....	113,974	114,714	114,792	113,974	114,801	114,894	114,637	114,714	114,792
Civilian labor force.....	68,967	68,728	68,903	68,976	69,151	69,027	68,839	68,802	68,898
Participation rate.....	60.5	59.9	60.0	60.5	60.2	60.1	60.0	60.0	60.0
Employed.....	63,537	63,277	63,681	63,479	63,385	63,428	63,392	63,319	63,566
Employment-population ratio.....	55.7	55.2	55.5	55.7	55.2	55.2	55.3	55.2	55.4
Unemployed.....	5,430	5,451	5,223	5,497	5,766	5,599	5,447	5,483	5,332
Unemployment rate.....	7.9	7.9	7.6	8.0	8.3	8.1	7.9	8.0	7.7
Not in labor force.....	45,007	45,986	45,888	44,998	45,651	45,867	45,798	45,912	45,894
Both sexes, 16 to 19 years									
Civilian noninstitutional population.....	16,987	16,845	16,827	16,987	16,800	16,780	16,863	16,845	16,827
Civilian labor force.....	5,635	5,235	5,331	6,078	5,820	5,757	5,841	5,649	5,744
Participation rate.....	33.2	31.1	31.7	35.8	34.6	34.3	34.6	33.5	34.1
Employed.....	4,207	3,974	4,075	4,497	4,393	4,298	4,341	4,300	4,339
Employment-population ratio.....	24.8	23.6	24.2	26.5	26.2	25.6	25.7	25.5	25.8
Unemployed.....	1,427	1,262	1,257	1,581	1,426	1,460	1,500	1,350	1,405
Unemployment rate.....	25.3	24.1	23.6	26.0	24.5	25.4	25.7	23.9	24.5
Not in labor force.....	11,352	11,610	11,496	10,908	10,980	11,022	11,022	11,196	11,083

¹ The population figures are not adjusted for seasonal variation; therefore, identical numbers appear in the unadjusted and seasonally adjusted columns.

NOTE: Updated population controls are introduced annually with the release of January data.

HOUSEHOLD DATA

Table A-2. Employment status of the civilian population by race, sex, and age

[Numbers in thousands]

Employment status, race, sex, and age	Not seasonally adjusted			Seasonally adjusted ¹					
	Mar. 2010	Feb. 2011	Mar. 2011	Mar. 2010	Nov. 2010	Dec. 2010	Jan. 2011	Feb. 2011	Mar. 2011
WHITE									
Civilian noninstitutional population.....	191,648	192,601	192,688	191,648	192,641	192,749	192,516	192,601	192,688
Civilian labor force.....	124,950	123,848	124,156	125,103	124,824	124,700	124,192	124,237	124,497
Participation rate.....	65.2	64.3	64.4	65.3	64.8	64.7	64.5	64.5	64.6
Employed.....	113,339	113,066	113,877	114,165	113,728	114,079	114,197	114,330	114,706
Employment-population ratio.....	59.1	58.7	59.1	59.6	59.0	59.2	59.3	59.4	59.5
Unemployed.....	11,611	10,782	10,279	10,939	11,096	10,620	9,995	9,907	9,791
Unemployment rate.....	9.3	8.7	8.3	8.7	8.9	8.5	8.0	8.0	7.9
Not in labor force.....	66,698	68,752	68,532	66,545	67,817	68,049	68,325	68,364	68,191
Men, 20 years and over									
Civilian labor force.....	65,277	64,866	64,890	65,062	65,088	65,041	64,673	64,919	64,864
Participation rate.....	74.8	73.8	73.8	74.6	74.1	74.0	73.6	73.9	73.7
Employed.....	58,701	58,939	59,254	59,279	59,137	59,484	59,586	59,860	59,850
Employment-population ratio.....	67.3	67.1	67.4	68.0	67.3	67.7	67.8	68.1	68.0
Unemployed.....	6,576	5,926	5,635	5,784	5,951	5,557	5,086	5,059	5,014
Unemployment rate.....	10.1	9.1	8.7	8.9	9.1	8.5	7.9	7.8	7.7
Women, 20 years and over									
Civilian labor force.....	55,033	54,685	54,900	55,067	54,953	54,914	54,686	54,677	54,950
Participation rate.....	60.2	59.6	59.8	60.2	59.7	59.7	59.6	59.5	59.8
Employed.....	51,079	50,772	51,169	51,092	50,817	50,920	50,878	50,816	51,184
Employment-population ratio.....	55.9	55.3	55.7	55.9	55.2	55.3	55.4	55.3	55.7
Unemployed.....	3,954	3,913	3,730	3,975	4,136	3,994	3,808	3,860	3,766
Unemployment rate.....	7.2	7.2	6.8	7.2	7.5	7.3	7.0	7.1	6.9
Both sexes, 16 to 19 years									
Civilian labor force.....	4,640	4,297	4,367	4,974	4,783	4,746	4,833	4,641	4,683
Participation rate.....	35.8	33.4	34.0	38.4	37.3	37.1	37.5	36.1	36.4
Employed.....	3,559	3,354	3,454	3,794	3,775	3,676	3,732	3,654	3,672
Employment-population ratio.....	27.5	26.1	26.9	29.3	29.5	28.7	29.0	28.4	28.6
Unemployed.....	1,081	943	913	1,180	1,008	1,070	1,100	987	1,011
Unemployment rate.....	23.3	21.9	20.9	23.7	21.1	22.5	22.8	21.3	21.6
BLACK OR AFRICAN AMERICAN									
Civilian noninstitutional population.....	28,591	28,976	29,005	28,591	28,865	28,896	28,947	28,976	29,005
Civilian labor force.....	17,795	17,680	17,705	17,901	18,020	17,958	17,857	17,865	17,836
Participation rate.....	62.2	61.0	61.0	62.6	62.4	62.1	61.7	61.7	61.5
Employed.....	14,837	14,922	14,965	14,939	15,142	15,119	15,048	15,124	15,067
Employment-population ratio.....	51.9	51.5	51.6	52.3	52.5	52.3	52.0	52.2	51.9
Unemployed.....	2,957	2,758	2,740	2,962	2,878	2,839	2,809	2,741	2,769
Unemployment rate.....	16.6	15.6	15.5	16.5	16.0	15.8	15.7	15.3	15.5
Not in labor force.....	10,796	11,296	11,300	10,690	10,845	10,939	11,090	11,112	11,169
Men, 20 years and over									
Civilian labor force.....	8,124	8,014	8,093	8,157	8,099	8,106	8,054	8,053	8,119
Participation rate.....	70.3	67.9	68.5	70.6	69.1	69.1	68.3	68.2	68.7
Employed.....	6,479	6,608	6,635	6,605	6,753	6,764	6,723	6,745	6,758
Employment-population ratio.....	56.1	56.0	56.1	57.2	57.6	57.6	57.1	57.2	57.2
Unemployed.....	1,645	1,406	1,458	1,552	1,346	1,341	1,331	1,309	1,361
Unemployment rate.....	20.2	17.5	18.0	19.0	16.6	16.5	16.5	16.2	16.8
Women, 20 years and over									
Civilian labor force.....	9,004	9,095	8,990	9,029	9,228	9,204	9,146	9,185	9,050
Participation rate.....	62.7	62.5	61.7	62.9	63.6	63.3	62.9	63.1	62.1
Employed.....	7,954	7,956	7,953	7,913	8,017	7,993	7,966	7,993	7,923
Employment-population ratio.....	55.4	54.6	54.6	55.1	55.2	55.0	54.8	54.9	54.4
Unemployed.....	1,050	1,140	1,037	1,116	1,211	1,211	1,179	1,192	1,127
Unemployment rate.....	11.7	12.5	11.5	12.4	13.1	13.2	12.9	13.0	12.5
Both sexes, 16 to 19 years									
Civilian labor force.....	666	571	623	715	693	648	658	627	668
Participation rate.....	24.9	21.8	23.8	26.7	26.3	24.6	25.1	23.9	25.6
Employed.....	404	358	378	421	372	361	359	386	387
Employment-population ratio.....	15.1	13.7	14.5	15.7	14.1	13.7	13.7	14.7	14.8
Unemployed.....	262	212	245	294	321	287	299	241	281
Unemployment rate.....	39.3	37.2	39.3	41.1	46.3	44.2	45.4	38.4	42.1
ASIAN									
Civilian noninstitutional population.....	11,089	11,345	11,301	-	-	-	-	-	-

See footnotes at end of table.

HOUSEHOLD DATA

Table A-2. Employment status of the civilian population by race, sex, and age — Continued

[Numbers in thousands]

Employment status, race, sex, and age	Not seasonally adjusted			Seasonally adjusted ¹					
	Mar. 2010	Feb. 2011	Mar. 2011	Mar. 2010	Nov. 2010	Dec. 2010	Jan. 2011	Feb. 2011	Mar. 2011
Civilian labor force.....	7,174	7,351	7,410	-	-	-	-	-	-
Participation rate.....	64.7	64.8	65.6	-	-	-	-	-	-
Employed.....	6,633	6,850	6,881	-	-	-	-	-	-
Employment-population ratio.....	59.8	60.4	60.9	-	-	-	-	-	-
Unemployed.....	541	502	529	-	-	-	-	-	-
Unemployment rate.....	7.5	6.8	7.1	-	-	-	-	-	-
Not in labor force.....	3,915	3,994	3,892	-	-	-	-	-	-

¹ The population figures are not adjusted for seasonal variation; therefore, identical numbers appear in the unadjusted and seasonally adjusted columns.

- Data not available.

NOTE: Estimates for the above race groups will not sum to totals shown in table A-1 because data are not presented for all races. Updated population controls are introduced annually with the release of January data.

HOUSEHOLD DATA

Table A-3. Employment status of the Hispanic or Latino population by sex and age

[Numbers in thousands]

Employment status, sex, and age	Not seasonally adjusted			Seasonally adjusted ¹					
	Mar. 2010	Feb. 2011	Mar. 2011	Mar. 2010	Nov. 2010	Dec. 2010	Jan. 2011	Feb. 2011	Mar. 2011
HISPANIC OR LATINO ETHNICITY									
Civilian noninstitutional population.....	33,414	34,079	34,155	33,414	34,102	34,188	34,001	34,079	34,155
Civilian labor force.....	22,656	22,373	22,585	22,697	22,915	22,868	22,823	22,519	22,676
Participation rate.....	67.8	65.7	66.1	67.9	67.2	66.9	67.1	66.1	66.4
Employed.....	19,650	19,580	19,896	19,854	19,899	19,906	20,099	19,912	20,105
Employment-population ratio.....	58.8	57.5	58.3	59.4	58.4	58.2	59.1	58.4	58.9
Unemployed.....	3,006	2,793	2,690	2,843	3,016	2,962	2,724	2,606	2,571
Unemployment rate.....	13.3	12.5	11.9	12.5	13.2	13.0	11.9	11.6	11.3
Not in labor force.....	10,758	11,706	11,570	10,716	11,188	11,320	11,178	11,561	11,479
Men, 20 years and over									
Civilian labor force.....	12,857	12,844	12,889	-	-	-	-	-	-
Participation rate.....	82.7	81.5	81.6	-	-	-	-	-	-
Employed.....	11,211	11,282	11,452	-	-	-	-	-	-
Employment-population ratio.....	72.1	71.6	72.5	-	-	-	-	-	-
Unemployed.....	1,647	1,562	1,437	-	-	-	-	-	-
Unemployment rate.....	12.8	12.2	11.1	-	-	-	-	-	-
Women, 20 years and over									
Civilian labor force.....	8,763	8,645	8,788	-	-	-	-	-	-
Participation rate.....	59.9	57.9	58.7	-	-	-	-	-	-
Employed.....	7,716	7,685	7,825	-	-	-	-	-	-
Employment-population ratio.....	52.7	51.5	52.3	-	-	-	-	-	-
Unemployed.....	1,047	960	963	-	-	-	-	-	-
Unemployment rate.....	12.0	11.1	11.0	-	-	-	-	-	-
Both sexes, 16 to 19 years									
Civilian labor force.....	1,035	884	909	-	-	-	-	-	-
Participation rate.....	32.0	26.1	26.8	-	-	-	-	-	-
Employed.....	724	613	619	-	-	-	-	-	-
Employment-population ratio.....	22.4	18.1	18.3	-	-	-	-	-	-
Unemployed.....	311	271	290	-	-	-	-	-	-
Unemployment rate.....	30.1	30.6	31.9	-	-	-	-	-	-

¹ The population figures are not adjusted for seasonal variation; therefore, identical numbers appear in the unadjusted and seasonally adjusted columns.

- Data not available.

NOTE: Persons whose ethnicity is identified as Hispanic or Latino may be of any race. Updated population controls are introduced annually with the release of January data.

HOUSEHOLD DATA

Table A-4. Employment status of the civilian population 25 years and over by educational attainment

[Numbers in thousands]

Educational attainment	Not seasonally adjusted			Seasonally adjusted					
	Mar. 2010	Feb. 2011	Mar. 2011	Mar. 2010	Nov. 2010	Dec. 2010	Jan. 2011	Feb. 2011	Mar. 2011
Less than a high school diploma									
Civilian labor force.....	11,803	11,045	11,565	11,842	11,803	11,758	11,383	11,317	11,652
Participation rate.....	46.2	44.4	45.7	46.3	46.6	46.0	45.1	45.5	46.1
Employed.....	9,889	9,293	9,809	10,133	9,955	9,963	9,770	9,749	10,059
Employment-population ratio.....	38.7	37.4	38.8	39.7	39.3	39.0	38.7	39.2	39.8
Unemployed.....	1,914	1,752	1,756	1,709	1,848	1,795	1,613	1,568	1,593
Unemployment rate.....	16.2	15.9	15.2	14.4	15.7	15.3	14.2	13.9	13.7
High school graduates, no college¹									
Civilian labor force.....	39,202	37,806	37,541	38,670	37,824	38,203	37,513	37,525	37,171
Participation rate.....	62.6	60.7	60.6	61.7	61.1	60.9	60.3	60.3	60.0
Employed.....	34,527	33,750	33,604	34,487	34,035	34,465	33,972	33,965	33,654
Employment-population ratio.....	55.1	54.2	54.3	55.0	55.0	54.9	54.6	54.6	54.4
Unemployed.....	4,674	4,056	3,937	4,183	3,789	3,738	3,541	3,560	3,517
Unemployment rate.....	11.9	10.7	10.5	10.8	10.0	9.8	9.4	9.5	9.5
Some college or associate degree									
Civilian labor force.....	36,579	36,928	36,519	36,647	37,037	36,809	36,841	36,784	36,653
Participation rate.....	70.8	69.7	69.5	70.9	69.8	70.2	70.2	69.5	69.7
Employed.....	33,410	33,916	33,708	33,640	33,832	33,821	33,878	33,919	33,938
Employment-population ratio.....	64.7	64.0	64.1	65.1	63.8	64.5	64.6	64.1	64.6
Unemployed.....	3,170	3,012	2,811	3,007	3,205	2,988	2,963	2,865	2,715
Unemployment rate.....	8.7	8.2	7.7	8.2	8.7	8.1	8.0	7.8	7.4
Bachelor's degree and higher²									
Civilian labor force.....	45,742	46,520	46,979	45,747	46,322	46,312	46,263	46,591	46,919
Participation rate.....	77.1	76.8	77.0	77.1	76.6	76.9	76.4	76.9	76.9
Employed.....	43,570	44,495	44,943	43,540	43,952	44,095	44,322	44,588	44,843
Employment-population ratio.....	73.4	73.4	73.6	73.4	72.7	73.2	73.2	73.6	73.5
Unemployed.....	2,172	2,025	2,036	2,208	2,370	2,217	1,941	2,003	2,076
Unemployment rate.....	4.7	4.4	4.3	4.8	5.1	4.8	4.2	4.3	4.4

1 Includes persons with a high school diploma or equivalent.

2 Includes persons with bachelor's, master's, professional, and doctoral degrees.

NOTE: Updated population controls are introduced annually with the release of January data.

HOUSEHOLD DATA

Table A-5. Employment status of the civilian population 18 years and over by veteran status, period of service, and sex, not seasonally adjusted

[Numbers in thousands]

Employment status, veteran status, and period of service	Total		Men		Women	
	Mar. 2010	Mar. 2011	Mar. 2010	Mar. 2011	Mar. 2010	Mar. 2011
VETERANS, 18 years and over						
Civilian noninstitutional population.....	22,124	21,729	20,342	19,932	1,782	1,797
Civilian labor force.....	11,819	11,273	10,727	10,136	1,092	1,137
Participation rate.....	53.4	51.9	52.7	50.9	61.3	63.3
Employed.....	10,656	10,259	9,663	9,234	993	1,025
Employment-population ratio.....	48.2	47.2	47.5	46.3	55.7	57.0
Unemployed.....	1,163	1,014	1,064	902	99	112
Unemployment rate.....	9.8	9.0	9.9	8.9	9.1	9.9
Not in labor force.....	10,305	10,456	9,615	9,796	690	660
 Gulf War-era II veterans						
Civilian noninstitutional population.....	2,103	2,449	1,743	1,980	360	469
Civilian labor force.....	1,713	1,948	1,451	1,632	262	316
Participation rate.....	81.4	79.6	83.3	82.4	72.7	67.5
Employed.....	1,461	1,736	1,236	1,443	225	293
Employment-population ratio.....	69.5	70.9	70.9	72.9	62.4	62.4
Unemployed.....	252	213	215	189	37	24
Unemployment rate.....	14.7	10.9	14.8	11.6	14.2	7.5
Not in labor force.....	390	500	292	348	98	152
 Gulf War-era I veterans						
Civilian noninstitutional population.....	2,996	2,953	2,545	2,521	451	432
Civilian labor force.....	2,608	2,480	2,272	2,154	336	326
Participation rate.....	87.0	84.0	89.3	85.4	74.4	75.6
Employed.....	2,360	2,274	2,037	1,973	323	301
Employment-population ratio.....	78.8	77.0	80.1	78.3	71.6	69.6
Unemployed.....	248	207	235	181	13	26
Unemployment rate.....	9.5	8.3	10.3	8.4	3.8	7.9
Not in labor force.....	388	472	273	367	115	105
 World War II, Korean War, and Vietnam-era veterans						
Civilian noninstitutional population.....	11,113	10,558	10,743	10,236	370	322
Civilian labor force.....	4,014	3,602	3,904	3,473	110	129
Participation rate.....	36.1	34.1	36.3	33.9	29.9	40.0
Employed.....	3,705	3,292	3,599	3,177	106	115
Employment-population ratio.....	33.3	31.2	33.5	31.0	28.7	35.8
Unemployed.....	309	310	305	296	4	14
Unemployment rate.....	7.7	8.6	7.8	8.5	3.8	10.6
Not in labor force.....	7,098	6,956	6,839	6,763	259	193
 Veterans of other service periods						
Civilian noninstitutional population.....	5,912	5,770	5,311	5,196	601	574
Civilian labor force.....	3,484	3,243	3,100	2,877	384	365
Participation rate.....	58.9	56.2	58.4	55.4	63.9	63.6
Employed.....	3,130	2,958	2,791	2,641	339	316
Employment-population ratio.....	52.9	51.3	52.5	50.8	56.4	55.1
Unemployed.....	354	285	309	236	45	49
Unemployment rate.....	10.2	8.8	10.0	8.2	11.7	13.4
Not in labor force.....	2,428	2,527	2,211	2,318	217	209
NONVETERANS, 18 years and over						
Civilian noninstitutional population.....	206,214	208,483	89,984	91,497	116,230	116,986
Civilian labor force.....	140,085	140,108	70,338	70,506	69,747	69,602
Participation rate.....	67.9	67.2	78.2	77.1	60.0	59.5
Employed.....	126,083	127,531	61,987	63,349	64,096	64,182
Employment-population ratio.....	61.1	61.2	68.9	69.2	55.1	54.9
Unemployed.....	14,002	12,577	8,351	7,157	5,651	5,420
Unemployment rate.....	10.0	9.0	11.9	10.2	8.1	7.8
Not in labor force.....	66,129	68,375	19,646	20,990	46,483	47,384

NOTE: Veterans served on active duty in the U.S. Armed Forces and were not on active duty at the time of the survey. Nonveterans never served on active duty in the U.S. Armed Forces. Veterans could have served anywhere in the world during these periods of service: Gulf War era II (September 2001-present), Gulf War era I (August 1990-August 2001), Vietnam era (August 1964-April 1975), Korean War (July 1950-January 1955), World War II (December 1941-December 1946), and other service periods (all other time periods). Veterans who served in more than one wartime period are classified only in the most recent one. Veterans who served during one of the selected wartime periods and another period are classified only in the wartime period. Updated population controls are introduced annually with the release of January data.

HOUSEHOLD DATA

Table A-6. Employment status of the civilian population by sex, age, and disability status, not seasonally adjusted

[Numbers in thousands]

Employment status, sex, and age	Persons with a disability		Persons with no disability	
	Mar. 2010	Mar. 2011	Mar. 2010	Mar. 2011
TOTAL, 16 years and over				
Civilian noninstitutional population.....	26,945	27,631	210,214	211,369
Civilian labor force.....	6,054	5,794	147,607	147,228
Participation rate.....	22.5	21.0	70.2	69.7
Employed.....	5,215	4,891	132,767	134,071
Employment-population ratio.....	19.4	17.7	63.2	63.4
Unemployed.....	839	903	14,839	13,157
Unemployment rate.....	13.9	15.6	10.1	8.9
Not in labor force.....	20,891	21,836	62,608	64,141
Men, 16 to 64 years				
Civilian labor force.....	2,835	2,671	75,455	74,933
Participation rate.....	38.7	35.2	83.1	82.3
Employed.....	2,363	2,196	66,499	67,376
Employment-population ratio.....	32.2	29.0	73.2	74.0
Unemployed.....	472	474	8,956	7,557
Unemployment rate.....	16.6	17.8	11.9	10.1
Not in labor force.....	4,495	4,907	15,359	16,158
Women, 16 to 64 years				
Civilian labor force.....	2,413	2,238	66,307	66,171
Participation rate.....	31.8	29.3	71.4	71.0
Employed.....	2,115	1,876	60,814	60,952
Employment-population ratio.....	27.8	24.5	65.4	65.4
Unemployed.....	298	362	5,493	5,219
Unemployment rate.....	12.4	16.2	8.3	7.9
Not in labor force.....	5,183	5,406	26,614	27,065
Both sexes, 65 years and over				
Civilian labor force.....	806	886	5,845	6,124
Participation rate.....	6.7	7.1	22.1	22.6
Employed.....	737	819	5,455	5,743
Employment-population ratio.....	6.1	6.6	20.6	21.2
Unemployed.....	69	67	390	380
Unemployment rate.....	8.5	7.6	6.7	6.2
Not in labor force.....	11,213	11,524	20,635	20,917

NOTE: A person with a disability has at least one of the following conditions: is deaf or has serious difficulty hearing; is blind or has serious difficulty seeing even when wearing glasses; has serious difficulty concentrating, remembering, or making decisions because of a physical, mental, or emotional condition; has serious difficulty walking or climbing stairs; has difficulty dressing or bathing; or has difficulty doing errands alone such as visiting a doctor's office or shopping because of a physical, mental, or emotional condition. Updated population controls are introduced annually with the release of January data.

HOUSEHOLD DATA

Table A-7. Employment status of the civilian population by nativity and sex, not seasonally adjusted

[Numbers in thousands]

Employment status and nativity	Total		Men		Women	
	Mar. 2010	Mar. 2011	Mar. 2010	Mar. 2011	Mar. 2010	Mar. 2011
Foreign born, 16 years and over						
Civilian noninstitutional population.....	34,991	35,996	17,428	17,886	17,564	18,110
Civilian labor force.....	23,855	24,034	14,093	14,259	9,762	9,775
Participation rate.....	68.2	66.8	80.9	79.7	55.6	54.0
Employed.....	21,239	21,728	12,501	12,886	8,739	8,842
Employment-population ratio.....	60.7	60.4	71.7	72.0	49.8	48.8
Unemployed.....	2,616	2,306	1,592	1,373	1,024	933
Unemployment rate.....	11.0	9.6	11.3	9.6	10.5	9.5
Not in labor force.....	11,136	11,961	3,334	3,626	7,802	8,335
Native born, 16 years and over						
Civilian noninstitutional population.....	202,168	203,004	97,393	98,102	104,775	104,902
Civilian labor force.....	129,805	128,988	67,856	67,231	61,949	61,756
Participation rate.....	64.2	63.5	69.7	68.5	59.1	58.9
Employed.....	116,743	117,234	59,752	60,301	56,991	56,933
Employment-population ratio.....	57.7	57.7	61.4	61.5	54.4	54.3
Unemployed.....	13,062	11,754	8,104	6,931	4,958	4,823
Unemployment rate.....	10.1	9.1	11.9	10.3	8.0	7.8
Not in labor force.....	72,363	74,016	29,537	30,870	42,825	43,146

NOTE: The foreign born are those residing in the United States who were not U.S. citizens at birth. That is, they were born outside the United States or one of its outlying areas such as Puerto Rico or Guam, to parents neither of whom was a U.S. citizen. The native born are persons who were born in the United States or one of its outlying areas such as Puerto Rico or Guam or who were born abroad of at least one parent who was a U.S. citizen. Updated population controls are introduced annually with the release of January data.

HOUSEHOLD DATA

Table A-8. Employed persons by class of worker and part-time status

[In thousands]

Category	Not seasonally adjusted			Seasonally adjusted					
	Mar. 2010	Feb. 2011	Mar. 2011	Mar. 2010	Nov. 2010	Dec. 2010	Jan. 2011	Feb. 2011	Mar. 2011
CLASS OF WORKER									
Agriculture and related industries.....	2,103	2,097	2,145	2,212	2,185	2,176	2,256	2,255	2,251
Wage and salary workers ¹	1,242	1,233	1,303	1,370	1,385	1,384	1,390	1,340	1,423
Self-employed workers, unincorporated.....	835	849	824	851	771	775	861	889	835
Unpaid family workers.....	26	15	17	-	-	-	-	-	-
Nonagricultural industries.....	135,880	135,996	136,818	136,842	136,752	137,001	137,088	137,443	137,738
Wage and salary workers ¹	127,009	127,336	128,060	127,745	127,728	128,043	128,151	128,664	128,800
Government.....	21,472	20,985	21,082	21,250	20,600	20,759	20,740	20,933	20,858
Private industries.....	105,537	106,351	106,978	106,515	107,146	107,303	107,409	107,681	107,946
Private households.....	733	688	695	-	-	-	-	-	-
Other industries.....	104,804	105,663	106,283	105,770	106,516	106,665	106,774	106,965	107,251
Self-employed workers, unincorporated.....	8,797	8,573	8,652	8,937	8,832	8,783	8,864	8,688	8,773
Unpaid family workers.....	74	87	105	-	-	-	-	-	-
PERSONS AT WORK PART TIME²									
All industries									
Part time for economic reasons ³	9,343	8,749	8,737	9,012	8,960	8,931	8,407	8,340	8,433
Slack work or business conditions.....	6,443	6,051	5,812	6,174	6,025	6,011	5,771	5,630	5,595
Could only find part-time work.....	2,611	2,402	2,529	2,351	2,557	2,568	2,510	2,415	2,332
Part time for noneconomic reasons ⁴	18,739	18,669	18,912	18,334	18,326	18,184	17,929	18,220	18,417
Nonagricultural industries									
Part time for economic reasons ³	9,210	8,633	8,537	8,903	8,822	8,789	8,242	8,248	8,265
Slack work or business conditions.....	6,343	5,974	5,708	6,093	5,941	5,911	5,661	5,558	5,504
Could only find part-time work.....	2,606	2,388	2,503	2,378	2,555	2,542	2,513	2,383	2,305
Part time for noneconomic reasons ⁴	18,430	18,321	18,565	18,001	17,929	17,829	17,552	17,835	17,984

1 Includes self-employed workers whose businesses are incorporated.

2 Refers to those who worked 1 to 34 hours during the survey reference week and excludes employed persons who were absent from their jobs for the entire week.

3 Refers to those who worked 1 to 34 hours during the reference week for an economic reason such as slack work or unfavorable business conditions, inability to find full-time work, or seasonal declines in demand.

4 Refers to persons who usually work part time for noneconomic reasons such as childcare problems, family or personal obligations, school or training, retirement or Social Security limits on earnings, and other reasons. This excludes persons who usually work full time but worked only 1 to 34 hours during the reference week for reasons such as vacations, holidays, illness, and bad weather.

- Data not available.

NOTE: Detail for the seasonally adjusted data shown in this table will not necessarily add to totals because of the independent seasonal adjustment of the various series. Updated population controls are introduced annually with the release of January data.

HOUSEHOLD DATA

Table A-9. Selected employment indicators

[Numbers in thousands]

Characteristic	Not seasonally adjusted			Seasonally adjusted					
	Mar. 2010	Feb. 2011	Mar. 2011	Mar. 2010	Nov. 2010	Dec. 2010	Jan. 2011	Feb. 2011	Mar. 2011
AGE AND SEX									
Total, 16 years and over.....	137,983	138,093	138,962	138,952	138,909	139,206	139,323	139,573	139,864
16 to 19 years.....	4,207	3,974	4,075	4,497	4,393	4,298	4,341	4,300	4,339
16 to 17 years.....	1,243	1,155	1,172	1,393	1,440	1,434	1,406	1,311	1,326
18 to 19 years.....	2,964	2,819	2,903	3,093	2,961	2,869	2,939	3,000	2,990
20 years and over.....	133,775	134,119	134,887	134,455	134,515	134,908	134,982	135,274	135,525
20 to 24 years.....	12,380	12,664	12,823	12,608	12,774	12,713	12,941	12,954	13,021
25 years and over.....	121,396	121,455	122,064	121,804	121,744	122,196	122,026	122,245	122,479
25 to 54 years.....	93,620	93,017	93,442	94,096	93,723	93,962	93,758	93,764	93,949
25 to 34 years.....	29,860	30,110	30,303	30,115	30,214	30,345	30,438	30,412	30,538
35 to 44 years.....	30,623	30,156	30,453	30,790	30,527	30,447	30,373	30,409	30,605
45 to 54 years.....	33,137	32,751	32,686	33,191	32,982	33,170	32,946	32,943	32,806
55 years and over.....	27,776	28,437	28,622	27,708	28,021	28,234	28,268	28,481	28,530
Men, 16 years and over.....	72,253	72,796	73,187	73,163	73,337	73,600	73,800	74,122	74,108
16 to 19 years.....	2,014	1,953	1,980	2,187	2,206	2,121	2,211	2,168	2,149
16 to 17 years.....	602	562	604	688	688	695	717	668	688
18 to 19 years.....	1,412	1,391	1,376	1,492	1,524	1,420	1,471	1,495	1,454
20 years and over.....	70,238	70,842	71,207	70,977	71,130	71,480	71,589	71,954	71,959
20 to 24 years.....	6,248	6,513	6,579	6,409	6,502	6,568	6,784	6,715	6,731
25 years and over.....	63,990	64,329	64,628	64,586	64,617	64,904	64,789	65,179	65,207
25 to 54 years.....	49,510	49,491	49,659	50,079	49,970	50,117	50,005	50,247	50,241
25 to 34 years.....	15,999	16,347	16,401	16,291	16,331	16,428	16,542	16,627	16,677
35 to 44 years.....	16,475	16,240	16,319	16,635	16,543	16,522	16,394	16,477	16,481
45 to 54 years.....	17,036	16,904	16,939	17,153	17,096	17,168	17,070	17,143	17,083
55 years and over.....	14,481	14,839	14,969	14,507	14,648	14,787	14,784	14,932	14,966
Women, 16 years and over.....	65,730	65,297	65,775	65,789	65,572	65,605	65,523	65,451	65,756
16 to 19 years.....	2,193	2,021	2,095	2,310	2,187	2,177	2,130	2,132	2,190
16 to 17 years.....	640	593	568	705	752	739	689	644	638
18 to 19 years.....	1,552	1,428	1,527	1,602	1,437	1,449	1,468	1,506	1,537
20 years and over.....	63,537	63,277	63,681	63,479	63,385	63,428	63,392	63,319	63,566
20 to 24 years.....	6,132	6,151	6,244	6,198	6,272	6,145	6,157	6,239	6,290
25 years and over.....	57,405	57,125	57,436	57,218	57,127	57,292	57,237	57,065	57,272
25 to 54 years.....	44,110	43,527	43,783	44,017	43,753	43,845	43,752	43,517	43,708
25 to 34 years.....	13,861	13,764	13,902	13,824	13,883	13,917	13,897	13,785	13,862
35 to 44 years.....	14,148	13,916	14,135	14,155	13,983	13,925	13,979	13,931	14,124
45 to 54 years.....	16,101	15,847	15,746	16,038	15,887	16,003	15,877	15,800	15,723
55 years and over.....	13,295	13,598	13,653	13,201	13,374	13,447	13,485	13,549	13,564
MARITAL STATUS									
Married men, spouse present.....	42,954	42,658	42,636	43,152	43,130	43,081	42,915	42,957	42,880
Married women, spouse present.....	34,900	34,579	34,292	34,810	34,543	34,612	34,571	34,496	34,236
Women who maintain families.....	8,688	8,499	8,744	-	-	-	-	-	-
FULL- OR PART-TIME STATUS									
Full-time workers ¹	109,877	110,731	111,186	111,454	111,187	111,744	112,356	112,660	112,775
Part-time workers ²	28,106	27,361	27,776	27,402	27,594	27,394	26,901	26,878	27,087
MULTIPLE JOBHOLDERS									
Total multiple jobholders.....	7,063	6,882	6,809	7,002	6,734	6,950	6,840	6,764	6,746
Percent of total employed.....	5.1	5.0	4.9	5.0	4.8	5.0	4.9	4.8	4.8
SELF-EMPLOYMENT									
Self-employed workers, incorporated.....	5,446	5,221	5,169	-	-	-	-	-	-
Self-employed workers, unincorporated.....	9,632	9,421	9,476	9,788	9,603	9,559	9,724	9,577	9,608

1 Employed full-time workers are persons who usually work 35 hours or more per week.

2 Employed part-time workers are persons who usually work less than 35 hours per week.

- Data not available.

NOTE: Detail for the seasonally adjusted data shown in this table will not necessarily add to totals because of the independent seasonal adjustment of the various series. Updated population controls are introduced annually with the release of January data.

HOUSEHOLD DATA

Table A-10. Selected unemployment indicators, seasonally adjusted

Characteristic	Number of unemployed persons (in thousands)			Unemployment rates					
	Mar. 2010	Feb. 2011	Mar. 2011	Mar. 2010	Nov. 2010	Dec. 2010	Jan. 2011	Feb. 2011	Mar. 2011
AGE AND SEX									
Total, 16 years and over.....	14,943	13,673	13,542	9.7	9.8	9.4	9.0	8.9	8.8
16 to 19 years.....	1,581	1,350	1,405	26.0	24.5	25.4	25.7	23.9	24.5
16 to 17 years.....	591	531	542	29.8	24.9	27.1	27.8	28.8	29.0
18 to 19 years.....	990	820	869	24.2	24.2	24.5	24.6	21.5	22.5
20 years and over.....	13,362	12,323	12,137	9.0	9.2	8.8	8.4	8.3	8.2
20 to 24 years.....	2,351	2,352	2,297	15.7	15.9	15.3	15.2	15.4	15.0
25 years and over.....	11,013	10,013	9,858	8.3	8.4	8.1	7.6	7.6	7.4
25 to 54 years.....	9,000	8,049	7,933	8.7	8.7	8.5	7.9	7.9	7.8
25 to 34 years.....	3,344	3,146	3,068	10.0	10.4	10.1	9.3	9.4	9.1
35 to 44 years.....	2,852	2,436	2,361	8.5	7.7	7.8	7.4	7.4	7.2
45 to 54 years.....	2,804	2,467	2,504	7.8	8.1	7.5	7.1	7.0	7.1
55 years and over.....	2,043	1,962	1,969	6.9	7.2	6.9	6.7	6.4	6.5
Men, 16 years and over.....	8,778	7,598	7,566	10.7	10.5	10.1	9.5	9.3	9.3
16 to 19 years.....	914	757	761	29.5	26.6	27.8	27.2	25.9	26.2
16 to 17 years.....	310	267	275	31.1	28.5	29.0	29.1	28.5	28.5
18 to 19 years.....	605	493	492	28.8	25.5	27.4	26.6	24.8	25.3
20 years and over.....	7,864	6,841	6,805	10.0	9.9	9.4	8.8	8.7	8.6
20 to 24 years.....	1,429	1,315	1,319	18.2	18.1	16.9	15.9	16.4	16.4
25 years and over.....	6,401	5,565	5,486	9.0	9.0	8.6	8.0	7.9	7.8
25 to 54 years.....	5,237	4,428	4,396	9.5	9.3	8.9	8.3	8.1	8.0
25 to 34 years.....	2,038	1,743	1,703	11.1	10.9	10.6	9.8	9.5	9.3
35 to 44 years.....	1,581	1,327	1,287	8.7	7.9	7.9	7.6	7.5	7.2
45 to 54 years.....	1,617	1,358	1,406	8.6	9.2	8.3	7.5	7.3	7.6
55 years and over.....	1,164	1,137	1,090	7.4	8.0	7.2	7.1	7.1	6.8
Women, 16 years and over.....	6,165	6,075	5,976	8.6	8.9	8.7	8.5	8.5	8.3
16 to 19 years.....	668	593	644	22.4	22.3	22.8	24.0	21.8	22.7
16 to 17 years.....	281	264	267	28.5	21.2	25.2	26.4	29.1	29.5
18 to 19 years.....	386	327	377	19.4	22.8	21.5	22.5	17.8	19.7
20 years and over.....	5,497	5,483	5,332	8.0	8.3	8.1	7.9	8.0	7.7
20 to 24 years.....	922	1,036	978	13.0	13.5	13.5	14.4	14.2	13.5
25 years and over.....	4,613	4,448	4,372	7.5	7.7	7.5	7.1	7.2	7.1
25 to 54 years.....	3,763	3,621	3,537	7.9	8.1	7.9	7.5	7.7	7.5
25 to 34 years.....	1,305	1,403	1,365	8.6	9.8	9.5	8.7	9.2	9.0
35 to 44 years.....	1,271	1,109	1,073	8.2	7.5	7.6	7.1	7.4	7.1
45 to 54 years.....	1,187	1,109	1,098	6.9	6.9	6.6	6.6	6.6	6.5
55 years and over ¹	841	825	846	6.0	6.2	5.8	6.3	5.7	5.8
MARITAL STATUS									
Married men, spouse present.....	3,128	2,641	2,688	6.8	6.9	6.6	5.8	5.8	5.9
Married women, spouse present.....	2,226	1,964	2,076	6.0	5.8	5.6	5.6	5.4	5.7
Women who maintain families ¹	1,102	1,273	1,224	11.3	13.0	12.0	12.7	13.0	12.3
FULL- OR PART-TIME STATUS									
Full-time workers ²	13,067	11,798	11,746	10.5	10.7	10.2	9.7	9.5	9.4
Part-time workers ³	1,960	1,873	1,835	6.7	5.8	6.0	6.2	6.5	6.3

1 Not seasonally adjusted.

2 Full-time workers are unemployed persons who have expressed a desire to work full time (35 hours or more per week) or are on layoff from full-time jobs.

3 Part-time workers are unemployed persons who have expressed a desire to work part time (less than 35 hours per week) or are on layoff from part-time jobs.

NOTE: Detail for the seasonally adjusted data shown in this table will not necessarily add to totals because of the independent seasonal adjustment of the various series. Updated population controls are introduced annually with the release of January data.

HOUSEHOLD DATA

Table A-11. Unemployed persons by reason for unemployment

[Numbers in thousands]

Reason	Not seasonally adjusted			Seasonally adjusted					
	Mar. 2010	Feb. 2011	Mar. 2011	Mar. 2010	Nov. 2010	Dec. 2010	Jan. 2011	Feb. 2011	Mar. 2011
NUMBER OF UNEMPLOYED									
Job losers and persons who completed temporary jobs.....	10,311	9,212	8,841	9,368	9,471	8,923	8,519	8,334	8,209
On temporary layoff.....	2,015	1,718	1,489	1,570	1,430	1,402	1,249	1,270	1,197
Not on temporary layoff.....	8,296	7,495	7,352	7,798	8,042	7,521	7,270	7,064	7,013
Permanent job losers.....	6,837	6,005	5,877	6,438	6,425	5,995	5,879	5,671	5,625
Persons who completed temporary jobs.....	1,459	1,489	1,475	1,360	1,617	1,526	1,391	1,393	1,388
Job leavers.....	856	888	857	893	864	914	910	898	896
Reentrants.....	3,521	3,338	3,233	3,523	3,427	3,408	3,357	3,352	3,262
New entrants.....	991	1,103	1,129	1,185	1,269	1,311	1,351	1,337	1,360
PERCENT DISTRIBUTION									
Job losers and persons who completed temporary jobs.....	65.8	63.4	62.9	62.6	63.0	61.3	60.3	59.9	59.8
On temporary layoff.....	12.9	11.8	10.6	10.5	9.5	9.6	8.8	9.1	8.7
Not on temporary layoff.....	52.9	51.5	52.3	52.1	53.5	51.7	51.4	50.7	51.1
Job leavers.....	5.5	6.1	6.1	6.0	5.8	6.3	6.4	6.4	6.5
Reentrants.....	22.5	23.0	23.0	23.5	22.8	23.4	23.7	24.1	23.8
New entrants.....	6.3	7.6	8.0	7.9	8.4	9.0	9.6	9.6	9.9
UNEMPLOYED AS A PERCENT OF THE CIVILIAN LABOR FORCE									
Job losers and persons who completed temporary jobs.....	6.7	6.0	5.8	6.1	6.2	5.8	5.6	5.4	5.4
Job leavers.....	0.6	0.6	0.6	0.6	0.6	0.6	0.6	0.6	0.6
Reentrants.....	2.3	2.2	2.1	2.3	2.2	2.2	2.2	2.2	2.1
New entrants.....	0.6	0.7	0.7	0.8	0.8	0.9	0.9	0.9	0.9

NOTE: Updated population controls are introduced annually with the release of January data.

HOUSEHOLD DATA

Table A-12. Unemployed persons by duration of unemployment

[Numbers in thousands]

Duration	Not seasonally adjusted			Seasonally adjusted					
	Mar. 2010	Feb. 2011	Mar. 2011	Mar. 2010	Nov. 2010	Dec. 2010	Jan. 2011	Feb. 2011	Mar. 2011
NUMBER OF UNEMPLOYED									
Less than 5 weeks.....	2,402	2,263	2,161	2,654	2,824	2,725	2,678	2,390	2,449
5 to 14 weeks.....	3,599	3,801	3,230	3,210	3,336	3,184	3,016	3,094	2,914
15 weeks and over.....	9,676	8,478	8,669	8,966	8,843	8,647	8,495	8,172	8,078
15 to 26 weeks.....	2,966	2,420	2,407	2,449	2,515	2,205	2,285	2,179	1,957
27 weeks and over.....	6,711	6,058	6,263	6,517	6,328	6,441	6,210	5,993	6,122
Average (mean) duration, in weeks ¹	32.1	36.7	39.8	31.7	33.9	34.2	36.9	37.1	39.0
Median duration, in weeks.....	21.6	20.6	22.7	20.3	21.7	22.4	21.8	21.2	21.7
PERCENT DISTRIBUTION									
Less than 5 weeks.....	15.3	15.6	15.4	17.9	18.8	18.7	18.9	17.5	18.2
5 to 14 weeks.....	23.0	26.1	23.0	21.6	22.2	21.9	21.3	22.7	21.7
15 weeks and over.....	61.7	58.3	61.7	60.5	58.9	59.4	59.9	59.8	60.1
15 to 26 weeks.....	18.9	16.6	17.1	16.5	16.8	15.2	16.1	16.0	14.6
27 weeks and over.....	42.8	41.7	44.5	43.9	42.2	44.3	43.8	43.9	45.5

¹ Beginning in January 2011, this series reflects a change to the collection of data on unemployment duration. For more information, see www.bls.gov/cps/duration.htm.

NOTE: Updated population controls are introduced annually with the release of January data.

HOUSEHOLD DATA

Table A-13. Employed and unemployed persons by occupation, not seasonally adjusted

[Numbers in thousands]

Occupation	Employed		Unemployed		Unemployment rates	
	Mar. 2010	Mar. 2011	Mar. 2010	Mar. 2011	Mar. 2010	Mar. 2011
Total, 16 years and over ¹	137,983	138,962	15,678	14,060	10.2	9.2
Management, professional, and related occupations.....	52,163	53,243	2,600	2,381	4.7	4.3
Management, business, and financial operations occupations.....	21,267	21,598	1,212	1,082	5.4	4.8
Professional and related occupations.....	30,896	31,646	1,387	1,299	4.3	3.9
Service occupations.....	24,229	24,223	2,770	2,744	10.3	10.2
Sales and office occupations.....	33,527	33,000	3,352	3,082	9.1	8.5
Sales and related occupations.....	15,366	14,983	1,655	1,441	9.7	8.8
Office and administrative support occupations.....	18,161	18,018	1,697	1,642	8.5	8.4
Natural resources, construction, and maintenance occupations.....	12,758	12,575	3,028	2,464	19.2	16.4
Farming, fishing, and forestry occupations.....	852	876	238	225	21.8	20.4
Construction and extraction occupations.....	6,968	6,898	2,275	1,754	24.6	20.3
Installation, maintenance, and repair occupations.....	4,938	4,801	515	486	9.4	9.2
Production, transportation, and material moving occupations.....	15,305	15,921	2,888	2,218	15.9	12.2
Production occupations.....	7,544	7,997	1,449	1,059	16.1	11.7
Transportation and material moving occupations.....	7,761	7,924	1,440	1,159	15.6	12.8

¹ Persons with no previous work experience and persons whose last job was in the U.S. Armed Forces are included in the unemployed total.

NOTE: Updated population controls are introduced annually with the release of January data. Effective with January 2011 data, occupations reflect the introduction of the 2010 Census occupational classification system into the Current Population Survey, or household survey. This classification system is derived from the 2010 Standard Occupational Classification (SOC). No historical data have been revised. Data for 2011 are not strictly comparable with earlier years.

HOUSEHOLD DATA

Table A-14. Unemployed persons by industry and class of worker, not seasonally adjusted

Industry and class of worker	Number of unemployed persons (in thousands)		Unemployment rates	
	Mar. 2010	Mar. 2011	Mar. 2010	Mar. 2011
Total, 16 years and over ¹	15,678	14,060	10.2	9.2
Nonagricultural private wage and salary workers.....	12,901	11,288	10.9	9.5
Mining, quarrying, and oil and gas extraction.....	73	46	10.1	5.9
Construction.....	2,251	1,695	24.9	20.0
Manufacturing.....	1,898	1,475	12.6	9.7
Durable goods.....	1,289	957	13.6	10.0
Nondurable goods.....	608	518	10.7	9.3
Wholesale and retail trade.....	2,097	1,796	10.1	8.8
Transportation and utilities.....	569	562	9.7	9.6
Information.....	322	236	10.4	7.6
Financial activities.....	717	649	7.7	7.1
Professional and business services.....	1,785	1,488	12.4	10.0
Education and health services.....	1,101	1,152	5.2	5.3
Leisure and hospitality.....	1,571	1,695	12.5	13.2
Other services.....	517	495	8.4	8.1
Agriculture and related private wage and salary workers.....	266	216	18.0	14.5
Government workers.....	881	888	3.9	4.0
Self-employed workers, unincorporated, and unpaid family workers.....	639	540	6.2	5.3

¹ Persons with no previous work experience and persons whose last job was in the U.S. Armed Forces are included in the unemployed total.

NOTE: Updated population controls are introduced annually with the release of January data.

HOUSEHOLD DATA

Table A-15. Alternative measures of labor underutilization

[Percent]

Measure	Not seasonally adjusted			Seasonally adjusted					
	Mar. 2010	Feb. 2011	Mar. 2011	Mar. 2010	Nov. 2010	Dec. 2010	Jan. 2011	Feb. 2011	Mar. 2011
U-1 Persons unemployed 15 weeks or longer, as a percent of the civilian labor force.....	6.3	5.6	5.7	5.8	5.7	5.6	5.5	5.3	5.3
U-2 Job losers and persons who completed temporary jobs, as a percent of the civilian labor force.....	6.7	6.0	5.8	6.1	6.2	5.8	5.6	5.4	5.4
U-3 Total unemployed, as a percent of the civilian labor force (official unemployment rate).....	10.2	9.5	9.2	9.7	9.8	9.4	9.0	8.9	8.8
U-4 Total unemployed plus discouraged workers, as a percent of the civilian labor force plus discouraged workers.....	10.8	10.1	9.7	10.3	10.5	10.2	9.6	9.5	9.4
U-5 Total unemployed, plus discouraged workers, plus all other persons marginally attached to the labor force, as a percent of the civilian labor force plus all persons marginally attached to the labor force.....	11.5	11.1	10.6	11.0	11.2	10.9	10.7	10.5	10.3
U-6 Total unemployed, plus all persons marginally attached to the labor force, plus total employed part time for economic reasons, as a percent of the civilian labor force plus all persons marginally attached to the labor force.....	17.5	16.7	16.2	16.8	17.0	16.7	16.1	15.9	15.7

NOTE: Persons marginally attached to the labor force are those who currently are neither working nor looking for work but indicate that they want and are available for a job and have looked for work sometime in the past 12 months. Discouraged workers, a subset of the marginally attached, have given a job-market related reason for not currently looking for work. Persons employed part time for economic reasons are those who want and are available for full-time work but have had to settle for a part-time schedule. Updated population controls are introduced annually with the release of January data.

HOUSEHOLD DATA

Table A-16. Persons not in the labor force and multiple jobholders by sex, not seasonally adjusted

[Numbers in thousands]

Category	Total		Men		Women	
	Mar. 2010	Mar. 2011	Mar. 2010	Mar. 2011	Mar. 2010	Mar. 2011
NOT IN THE LABOR FORCE						
Total not in the labor force.....	83,499	85,977	32,872	34,497	50,627	51,481
Persons who currently want a job.....	5,719	6,250	2,795	2,987	2,924	3,263
Marginally attached to the labor force ¹	2,255	2,434	1,263	1,280	992	1,154
Discouraged workers ²	994	921	624	569	370	351
Other persons marginally attached to the labor force ³	1,261	1,513	639	711	622	802
MULTIPLE JOBHOLDERS						
Total multiple jobholders ⁴	7,063	6,809	3,536	3,292	3,527	3,517
Percent of total employed.....	5.1	4.9	4.9	4.5	5.4	5.3
Primary job full time, secondary job part time.....	3,821	3,659	2,110	1,994	1,712	1,664
Primary and secondary jobs both part time.....	1,823	1,816	613	555	1,210	1,261
Primary and secondary jobs both full time.....	258	240	174	180	84	60
Hours vary on primary or secondary job.....	1,126	1,048	618	537	508	511

1 Data refer to persons who want a job, have searched for work during the prior 12 months, and were available to take a job during the reference week, but had not looked for work in the past 4 weeks.

2 Includes those who did not actively look for work in the prior 4 weeks for reasons such as thinks no work available, could not find work, lacks schooling or training, employer thinks too young or old, and other types of discrimination.

3 Includes those who did not actively look for work in the prior 4 weeks for such reasons as school or family responsibilities, ill health, and transportation problems, as well as a number for whom reason for nonparticipation was not determined.

4 Includes a small number of persons who work part time on their primary job and full time on their secondary job(s), not shown separately.

NOTE: Updated population controls are introduced annually with the release of January data.

ESTABLISHMENT DATA

Table B-1. Employees on nonfarm payrolls by industry sector and selected industry detail

[In thousands]

Industry	Not seasonally adjusted				Seasonally adjusted				Change from: Feb.2011 - Mar.2011 ^P
	Mar. 2010	Jan. 2011	Feb. 2011 ^P	Mar. 2011 ^P	Mar. 2010	Jan. 2011	Feb. 2011 ^P	Mar. 2011 ^P	
Total nonfarm.....	128,584	128,183	128,982	129,907	129,438	130,328	130,522	130,738	216
Total private.....	105,671	106,079	106,527	107,360	106,916	108,102	108,342	108,572	230
Goods-producing.....	17,248	17,304	17,332	17,502	17,701	17,835	17,908	17,939	31
Mining and logging.....	668	723	726	744	680	739	743	758	15
Logging.....	47.7	46.8	47.4	47.3	50.4	48.1	48.7	49.8	1.1
Mining.....	620.6	676.6	678.1	696.9	629.8	691.0	694.3	707.9	13.6
Oil and gas extraction.....	155.6	162.4	163.4	166.4	156.8	163.4	164.9	167.7	2.8
Mining, except oil and gas ¹	193.6	195.3	195.5	200.4	200.7	205.1	205.8	207.2	1.4
Coal mining.....	79.2	83.2	82.6	84.4	79.1	83.2	83.0	84.3	1.3
Support activities for mining.....	271.4	318.9	319.2	330.1	272.3	322.5	323.6	333.0	9.4
Construction.....	5,213	5,067	5,074	5,183	5,550	5,478	5,515	5,514	-1
Construction of buildings.....	1,186.3	1,157.9	1,146.4	1,167.1	1,245.0	1,219.7	1,221.4	1,224.6	3.2
Residential building.....	553.1	528.3	527.5	535.9	585.1	562.4	565.9	566.5	0.6
Nonresidential building.....	633.2	629.6	618.9	631.2	659.9	657.3	655.5	658.1	2.6
Heavy and civil engineering construction.....	735.0	720.2	725.6	759.3	814.8	830.5	837.5	839.9	2.4
Specialty trade contractors.....	3,291.5	3,189.0	3,201.6	3,256.9	3,490.2	3,427.8	3,455.9	3,449.2	-6.7
Residential specialty trade contractors.....	1,388.0	1,338.5	1,339.7	1,354.9	1,487.5	1,445.9	1,454.6	1,446.6	-8.0
Nonresidential specialty trade contractors.....	1,903.5	1,850.5	1,861.9	1,902.0	2,002.7	1,981.9	2,001.3	2,002.6	1.3
Manufacturing.....	11,367	11,514	11,532	11,575	11,471	11,618	11,650	11,667	17
Durable goods.....	6,960	7,132	7,151	7,185	7,010	7,183	7,210	7,227	17
Wood products.....	332.6	332.4	332.8	333.5	343.2	340.9	343.0	343.4	0.4
Nonmetallic mineral products.....	358.2	351.5	352.2	358.4	371.7	369.6	371.3	371.8	0.5
Primary metals.....	353.4	368.6	371.6	373.9	354.0	369.4	373.3	374.4	1.1
Fabricated metal products.....	1,253.4	1,318.1	1,317.8	1,329.5	1,262.0	1,323.2	1,329.5	1,337.7	8.2
Machinery.....	977.9	1,016.7	1,023.2	1,028.0	981.4	1,018.3	1,025.4	1,030.3	4.9
Computer and electronic products ¹	1,092.8	1,114.0	1,114.8	1,116.7	1,095.0	1,115.2	1,116.6	1,116.9	0.3
Computer and peripheral equipment.....	159.2	167.3	169.5	170.5	159.3	167.6	169.9	170.2	0.3
Communication equipment.....	116.2	119.5	117.4	117.7	116.6	119.2	117.2	118.2	1.0
Semiconductors and electronic components.....	365.6	377.4	378.2	379.1	366.3	377.5	378.7	378.9	0.2
Electronic instruments.....	406.1	405.2	404.5	404.4	406.9	406.3	405.6	404.9	-0.7
Electrical equipment and appliances.....	353.3	368.3	367.6	364.3	355.5	368.2	368.0	366.1	-1.9
Transportation equipment ¹	1,318.7	1,343.8	1,350.5	1,359.8	1,320.5	1,351.8	1,355.2	1,361.3	6.1
Motor vehicles and parts ²	665.8	686.8	692.2	698.2	664.4	693.8	693.8	697.0	3.2
Furniture and related products.....	355.9	346.8	346.4	347.7	359.3	352.2	351.2	350.9	-0.3
Miscellaneous manufacturing.....	563.7	571.5	574.5	572.7	567.2	574.2	576.0	574.6	-1.4
Nondurable goods.....	4,407	4,382	4,381	4,390	4,461	4,435	4,440	4,440	0
Food manufacturing.....	1,418.0	1,424.9	1,417.6	1,417.0	1,448.3	1,446.9	1,449.3	1,446.5	-2.8
Beverages and tobacco products.....	178.2	172.6	173.6	173.0	183.8	177.6	179.8	178.4	-1.4
Textile mills.....	118.9	118.7	119.9	120.5	119.2	119.9	120.7	120.8	0.1
Textile product mills.....	117.8	114.7	114.9	115.6	118.9	115.6	116.3	116.2	-0.1
Apparel.....	158.5	154.5	155.9	154.9	159.0	157.9	156.0	155.3	-0.7
Leather and allied products.....	27.4	27.8	28.8	29.4	27.6	28.2	29.1	29.4	0.3
Paper and paper products.....	392.6	396.3	394.5	395.0	395.7	396.5	396.4	397.4	1.0
Printing and related support activities.....	487.4	471.9	470.8	473.3	489.5	476.4	474.7	475.5	0.8
Petroleum and coal products.....	109.8	105.2	107.0	109.7	113.3	111.6	112.7	113.5	0.8
Chemicals.....	784.8	771.2	773.3	774.6	786.6	773.9	775.3	776.1	0.8
Plastics and rubber products.....	613.8	624.6	624.3	627.4	618.9	630.2	629.9	631.2	1.3
Private service-providing.....	88,423	88,775	89,195	89,858	89,215	90,267	90,434	90,633	199
Trade, transportation, and utilities.....	24,278	24,538	24,379	24,522	24,559	24,740	24,765	24,797	32
Wholesale trade.....	5,410.4	5,440.5	5,452.1	5,487.3	5,444.6	5,492.4	5,506.0	5,520.1	14.1
Durable goods.....	2,694.3	2,725.2	2,734.2	2,748.6	2,708.9	2,744.6	2,754.8	2,763.8	9.0
Nondurable goods.....	1,917.6	1,912.4	1,913.7	1,930.6	1,934.0	1,939.6	1,941.3	1,944.8	3.5
Electronic markets and agents and brokers.....	798.5	802.9	804.2	808.1	801.7	808.2	809.9	811.5	1.6
Retail trade.....	14,203.6	14,372.6	14,195.0	14,289.3	14,408.4	14,477.7	14,469.9	14,487.6	17.7
Motor vehicle and parts dealers ¹	1,599.4	1,621.0	1,630.4	1,641.5	1,614.8	1,650.8	1,654.8	1,656.7	1.9
Automobile dealers.....	997.0	1,011.0	1,016.8	1,020.4	1,002.0	1,023.3	1,025.2	1,024.9	-0.3
Furniture and home furnishings stores.....	432.4	440.1	428.3	426.3	438.7	435.4	434.1	433.0	-1.1

See footnotes at end of table.

ESTABLISHMENT DATA

Table B-1. Employees on nonfarm payrolls by industry sector and selected industry detail

— Continued

[In thousands]

Industry	Not seasonally adjusted				Seasonally adjusted				Change from: Feb.2011 - Mar.2011 ^P
	Mar. 2010	Jan. 2011	Feb. 2011 ^P	Mar. 2011 ^P	Mar. 2010	Jan. 2011	Feb. 2011 ^P	Mar. 2011 ^P	
Retail trade - Continued									
Electronics and appliance stores.....	491.5	504.0	493.7	491.6	492.5	500.0	496.1	494.0	-2.1
Building material and garden supply stores...	1,131.5	1,061.1	1,065.9	1,111.3	1,149.0	1,117.3	1,113.7	1,121.5	7.8
Food and beverage stores.....	2,778.7	2,801.0	2,787.6	2,786.0	2,806.9	2,816.1	2,815.5	2,813.9	-1.6
Health and personal care stores.....	973.9	972.2	965.3	961.2	979.9	971.9	970.0	967.9	-2.1
Gasoline stations.....	804.0	803.6	799.4	805.3	814.4	814.9	812.0	814.9	2.9
Clothing and clothing accessories stores.....	1,318.2	1,414.0	1,363.1	1,365.5	1,364.0	1,412.1	1,413.6	1,415.7	2.1
Sporting goods, hobby, book, and music stores.....	584.6	611.9	588.9	582.5	602.1	597.6	598.5	599.2	0.7
General merchandise stores ¹	2,935.0	2,982.8	2,917.8	2,969.3	2,964.6	2,987.2	2,989.1	2,996.1	7.0
Department stores.....	1,453.2	1,513.9	1,464.0	1,478.0	1,484.8	1,498.9	1,501.9	1,506.3	4.4
Miscellaneous store retailers.....	746.5	743.8	748.9	746.4	765.0	758.7	759.0	762.9	3.9
Nonstore retailers.....	407.9	417.1	405.7	402.4	416.5	415.7	413.5	411.8	-1.7
Transportation and warehousing.....	4,111.2	4,177.5	4,183.3	4,196.3	4,151.5	4,221.2	4,239.3	4,239.2	-0.1
Air transportation.....	461.7	466.6	468.5	471.2	462.5	469.3	470.7	471.3	0.6
Rail transportation.....	210.8	217.2	218.9	219.2	211.7	219.1	220.0	220.0	0.0
Water transportation.....	60.3	63.0	62.8	63.0	62.6	65.1	65.9	65.3	-0.6
Truck transportation.....	1,207.9	1,228.0	1,230.9	1,240.1	1,234.5	1,255.2	1,265.6	1,267.2	1.6
Transit and ground passenger transportation.....	436.5	454.0	454.3	455.0	424.0	443.9	444.6	443.9	-0.7
Pipeline transportation.....	42.4	42.6	42.5	42.8	42.7	42.4	42.6	43.0	0.4
Scenic and sightseeing transportation.....	20.7	19.4	20.4	21.5	27.2	27.1	27.4	27.8	0.4
Support activities for transportation.....	532.3	541.3	548.1	547.3	536.9	546.1	550.0	551.2	1.2
Couriers and messengers.....	513.9	522.8	515.1	514.4	521.3	524.9	524.2	524.1	-0.1
Warehousing and storage.....	624.7	622.6	621.8	621.8	628.1	628.1	628.3	625.4	-2.9
Utilities.....	553.0	547.2	548.4	548.9	554.3	548.9	550.1	549.9	-0.2
Information.....	2,715	2,663	2,679	2,678	2,718	2,687	2,685	2,681	-4
Publishing industries, except Internet.....	761.5	753.7	754.3	755.5	762.5	756.2	756.8	756.9	0.1
Motion picture and sound recording industries.....	365.4	352.0	366.0	368.5	367.0	371.1	370.3	370.5	0.2
Broadcasting, except Internet.....	293.5	295.3	295.8	294.8	294.3	295.8	296.8	295.5	-1.3
Telecommunications.....	913.4	876.9	875.9	869.8	912.7	876.8	873.1	869.3	-3.8
Data processing, hosting and related services.....	243.6	238.0	238.3	239.8	243.0	239.8	239.6	239.1	-0.5
Other information services.....	137.6	146.7	148.4	149.6	138.5	147.0	148.5	150.0	1.5
Financial activities.....	7,606	7,560	7,561	7,573	7,643	7,607	7,604	7,610	6
Finance and insurance.....	5,695.1	5,666.0	5,662.0	5,660.3	5,698.0	5,677.0	5,667.8	5,663.4	-4.4
Monetary authorities - central bank.....	20.6	21.0	20.8	21.1	20.6	21.1	21.0	21.1	0.1
Credit intermediation and related activities ¹	2,543.5	2,542.5	2,538.9	2,534.5	2,543.6	2,543.9	2,538.5	2,535.3	-3.2
Depository credit intermediation ¹	1,726.6	1,743.9	1,741.7	1,741.3	1,730.3	1,743.1	1,743.0	1,743.8	0.8
Commercial banking.....	1,303.7	1,316.4	1,314.7	1,314.4	1,305.0	1,315.8	1,315.2	1,316.0	0.8
Securities, commodity contracts, investments.....	795.6	802.5	804.7	806.5	795.5	804.7	806.0	806.6	0.6
Insurance carriers and related activities.....	2,249.0	2,213.0	2,210.4	2,211.7	2,251.6	2,220.1	2,215.1	2,213.4	-1.7
Funds, trusts, and other financial vehicles.....	86.4	87.0	87.2	86.5	86.7	87.2	87.2	87.0	-0.2
Real estate and rental and leasing.....	1,910.6	1,893.9	1,898.7	1,913.0	1,944.6	1,929.5	1,936.6	1,946.1	9.5
Real estate.....	1,378.9	1,368.6	1,374.8	1,377.9	1,398.8	1,390.8	1,395.6	1,397.6	2.0
Rental and leasing services.....	506.3	499.8	498.5	509.5	520.1	513.0	515.4	522.8	7.4
Lessors of nonfinancial intangible assets.....	25.4	25.5	25.4	25.6	25.7	25.7	25.6	25.7	0.1
Professional and business services.....	16,343	16,601	16,736	16,879	16,546	16,953	16,997	17,075	78
Professional and technical services ¹	7,467.9	7,513.7	7,576.4	7,600.3	7,403.3	7,486.6	7,494.2	7,528.9	34.7
Legal services.....	1,109.1	1,107.2	1,106.2	1,108.4	1,113.4	1,115.1	1,113.1	1,112.6	-0.5
Accounting and bookkeeping services.....	1,005.2	977.6	1,019.4	1,018.0	891.1	883.3	878.0	898.2	20.2
Architectural and engineering services.....	1,260.8	1,262.3	1,263.1	1,271.1	1,279.2	1,280.5	1,284.2	1,289.4	5.2
Computer systems design and related services.....	1,416.7	1,467.3	1,472.2	1,473.9	1,424.9	1,472.1	1,475.8	1,482.2	6.4
Management and technical consulting services.....	981.7	1,000.1	1,009.9	1,010.0	989.2	1,011.8	1,017.6	1,017.3	-0.3
Management of companies and enterprises.....	1,849.9	1,862.0	1,862.5	1,867.0	1,855.3	1,871.4	1,871.5	1,872.5	1.0
Administrative and waste services.....	7,024.7	7,225.5	7,297.2	7,411.2	7,287.3	7,594.6	7,631.4	7,673.4	42.0

See footnotes at end of table.

ESTABLISHMENT DATA

Table B-1. Employees on nonfarm payrolls by industry sector and selected industry detail

— Continued

[In thousands]

Industry	Not seasonally adjusted				Seasonally adjusted				Change from: Feb.2011 - Mar.2011 ^P
	Mar. 2010	Jan. 2011	Feb. 2011 ^P	Mar. 2011 ^P	Mar. 2010	Jan. 2011	Feb. 2011 ^P	Mar. 2011 ^P	
Administrative and waste services - Continued									
Administrative and support services ¹	6,681.2	6,872.2	6,945.2	7,059.4	6,936.3	7,234.7	7,270.4	7,313.3	42.9
Employment services ¹	2,517.3	2,693.0	2,756.4	2,817.0	2,639.4	2,867.1	2,899.2	2,935.1	35.9
Temporary help services.....	1,908.1	2,066.0	2,111.0	2,161.8	2,006.2	2,206.1	2,228.8	2,257.6	28.8
Business support services.....	809.4	804.6	810.7	813.3	804.6	805.4	808.3	809.2	0.9
Services to buildings and dwellings.....	1,591.3	1,605.5	1,600.2	1,636.5	1,715.5	1,770.5	1,765.2	1,764.1	-1.1
Waste management and remediation services.....	343.5	353.3	352.0	351.8	351.0	359.9	361.0	360.1	-0.9
Education and health services.....	19,599	19,670	19,925	20,019	19,455	19,789	19,830	19,875	45
Educational services.....	3,284.8	3,113.6	3,336.5	3,352.7	3,131.1	3,190.0	3,196.9	3,198.3	1.4
Health care and social assistance.....	16,314.4	16,556.0	16,588.3	16,666.1	16,323.8	16,598.5	16,632.6	16,677.1	44.5
Health care ³	13,694.6	13,894.5	13,921.5	13,977.6	13,722.2	13,935.8	13,968.4	14,005.0	36.6
Ambulatory health care services ¹	5,924.2	6,031.2	6,060.8	6,085.1	5,935.1	6,056.1	6,079.3	6,096.9	17.6
Offices of physicians.....	2,305.7	2,328.8	2,334.0	2,343.0	2,309.6	2,333.4	2,338.9	2,346.5	7.6
Outpatient care centers.....	594.4	610.0	613.7	614.4	594.6	611.8	614.3	615.0	0.7
Home health care services.....	1,065.9	1,098.1	1,107.5	1,113.5	1,067.9	1,105.0	1,113.6	1,115.6	2.0
Hospitals.....	4,665.7	4,705.4	4,705.8	4,719.7	4,674.4	4,712.0	4,717.4	4,727.6	10.2
Nursing and residential care facilities ¹	3,104.7	3,157.9	3,154.9	3,172.8	3,112.7	3,167.7	3,171.7	3,180.5	8.8
Nursing care facilities.....	1,649.4	1,675.3	1,668.5	1,678.6	1,654.2	1,679.4	1,678.1	1,682.8	4.7
Social assistance ¹	2,619.8	2,661.5	2,666.8	2,688.5	2,601.6	2,662.7	2,664.2	2,672.1	7.9
Child day care services.....	868.3	868.6	870.6	879.2	849.9	860.2	858.6	860.7	2.1
Leisure and hospitality.....	12,578	12,399	12,531	12,774	12,963	13,071	13,119	13,156	37
Arts, entertainment, and recreation.....	1,740.3	1,652.8	1,690.8	1,738.9	1,896.0	1,886.5	1,895.8	1,898.3	2.5
Performing arts and spectator sports.....	369.9	360.0	379.8	386.3	393.6	406.8	413.5	413.5	0.0
Museums, historical sites, zoos, and parks.....	119.3	115.4	117.4	121.3	128.3	128.0	129.3	129.6	0.3
Amusements, gambling, and recreation.....	1,251.1	1,177.4	1,193.6	1,231.3	1,374.1	1,351.7	1,353.0	1,355.2	2.2
Accommodation and food services.....	10,837.9	10,746.0	10,840.3	11,034.9	11,066.6	11,184.3	11,223.2	11,257.7	34.5
Accommodation.....	1,678.5	1,678.0	1,689.5	1,715.2	1,743.5	1,769.0	1,772.1	1,780.1	8.0
Food services and drinking places.....	9,159.4	9,068.0	9,150.8	9,319.7	9,323.1	9,415.3	9,451.1	9,477.6	26.5
Other services.....	5,304	5,344	5,384	5,413	5,331	5,420	5,434	5,439	5
Repair and maintenance.....	1,127.8	1,129.8	1,140.1	1,150.2	1,130.7	1,148.5	1,150.7	1,152.3	1.6
Personal and laundry services.....	1,259.1	1,248.3	1,261.1	1,273.0	1,266.1	1,268.0	1,276.2	1,279.3	3.1
Membership associations and organizations.....	2,916.8	2,965.9	2,983.1	2,989.4	2,933.8	3,003.3	3,007.1	3,007.5	0.4
Government.....	22,913	22,104	22,455	22,547	22,522	22,226	22,180	22,166	-14
Federal.....	2,905.0	2,828.0	2,827.0	2,832.0	2,926.0	2,850.0	2,851.0	2,852.0	1.0
Federal, except U.S. Postal Service.....	2,244.2	2,189.4	2,196.1	2,205.4	2,261.4	2,210.8	2,216.0	2,221.2	5.2
U.S. Postal Service.....	661.2	638.7	630.4	626.4	664.9	639.1	634.6	630.7	-3.9
State government.....	5,280.0	5,049.0	5,232.0	5,253.0	5,142.0	5,136.0	5,119.0	5,119.0	0.0
State government education.....	2,506.7	2,322.0	2,515.9	2,533.1	2,361.8	2,396.0	2,390.1	2,391.5	1.4
State government, excluding education.....	2,773.5	2,727.1	2,716.1	2,720.2	2,780.6	2,739.6	2,728.7	2,727.6	-1.1
Local government.....	14,728.0	14,227.0	14,396.0	14,462.0	14,454.0	14,240.0	14,210.0	14,195.0	-15.0
Local government education.....	8,432.1	8,047.1	8,214.7	8,271.9	8,058.3	7,939.3	7,916.1	7,906.9	-9.2
Local government, excluding education.....	6,296.2	6,179.9	6,181.3	6,190.2	6,395.8	6,300.8	6,294.0	6,288.0	-6.0

1 Includes other industries, not shown separately.

2 Includes motor vehicles, motor vehicle bodies and trailers, and motor vehicle parts.

3 Includes ambulatory health care services, hospitals, and nursing and residential care facilities.

p Preliminary

ESTABLISHMENT DATA

Table B-2. Average weekly hours and overtime of all employees on private nonfarm payrolls by industry sector, seasonally adjusted

Industry	Mar. 2010	Jan. 2011	Feb. 2011 ^p	Mar. 2011 ^p
AVERAGE WEEKLY HOURS				
Total private.....	34.1	34.2	34.3	34.3
Goods-producing.....	39.3	39.6	39.9	39.8
Mining and logging.....	43.3	44.1	44.0	44.3
Construction.....	37.3	37.3	38.0	37.8
Manufacturing.....	40.0	40.4	40.6	40.5
Durable goods.....	40.3	40.7	40.9	40.9
Nondurable goods.....	39.6	39.9	40.0	40.0
Private service-providing.....	33.0	33.1	33.2	33.2
Trade, transportation, and utilities.....	34.2	34.4	34.5	34.5
Wholesale trade.....	37.9	38.4	38.5	38.6
Retail trade.....	31.4	31.3	31.4	31.4
Transportation and warehousing.....	38.1	38.7	38.8	39.0
Utilities.....	40.6	41.8	41.3	41.9
Information.....	36.5	36.5	36.6	36.7
Financial activities.....	36.9	37.0	37.0	37.0
Professional and business services.....	35.3	35.7	35.7	35.7
Education and health services.....	32.8	32.7	32.7	32.7
Leisure and hospitality.....	25.8	25.8	25.8	25.9
Other services.....	31.6	31.6	31.6	31.7
AVERAGE OVERTIME HOURS				
Manufacturing.....	2.9	3.1	3.3	3.3
Durable goods.....	2.8	3.0	3.2	3.3
Nondurable goods.....	3.1	3.2	3.4	3.4

p Preliminary

ESTABLISHMENT DATA

Table B-3. Average hourly and weekly earnings of all employees on private nonfarm payrolls by industry sector, seasonally adjusted

Industry	Average hourly earnings				Average weekly earnings			
	Mar. 2010	Jan. 2011	Feb. 2011 ^P	Mar. 2011 ^P	Mar. 2010	Jan. 2011	Feb. 2011 ^P	Mar. 2011 ^P
Total private.....	\$22.48	\$22.86	\$22.87	\$22.87	\$ 766.57	\$ 781.81	\$ 784.44	\$ 784.44
Goods-producing.....	23.92	24.40	24.27	24.28	940.06	966.24	968.37	966.34
Mining and logging.....	27.04	27.99	27.97	28.02	1,170.83	1,234.36	1,230.68	1,241.29
Construction.....	25.17	25.42	25.40	25.41	938.84	948.17	965.20	960.50
Manufacturing.....	23.16	23.70	23.51	23.51	926.40	957.48	954.51	952.16
Durable goods.....	24.65	25.23	25.00	24.99	993.40	1,026.86	1,022.50	1,022.09
Nondurable goods.....	20.78	21.17	21.04	21.06	822.89	844.68	841.60	842.40
Private service-providing.....	22.14	22.50	22.54	22.54	730.62	744.75	748.33	748.33
Trade, transportation, and utilities.....	19.58	19.83	19.86	19.86	669.64	682.15	685.17	685.17
Wholesale trade.....	26.08	26.20	26.18	26.10	988.43	1,006.08	1,007.93	1,007.46
Retail trade.....	15.54	15.65	15.68	15.65	487.96	489.85	492.35	491.41
Transportation and warehousing.....	20.86	21.30	21.42	21.51	794.77	824.31	831.10	838.89
Utilities.....	32.28	33.19	33.10	33.33	1,310.57	1,387.34	1,367.03	1,396.53
Information.....	30.25	31.13	31.30	31.17	1,104.13	1,136.25	1,145.58	1,143.94
Financial activities.....	27.10	27.55	27.57	27.55	999.99	1,019.35	1,020.09	1,019.35
Professional and business services.....	27.15	27.38	27.49	27.56	958.40	977.47	981.39	983.89
Education and health services.....	22.73	23.34	23.40	23.40	745.54	763.22	765.18	765.18
Leisure and hospitality.....	13.09	13.18	13.15	13.14	337.72	340.04	339.27	340.33
Other services.....	20.11	20.41	20.40	20.30	635.48	644.96	644.64	643.51

p Preliminary

ESTABLISHMENT DATA

Table B-4. Indexes of aggregate weekly hours and payrolls for all employees on private nonfarm payrolls by industry sector, seasonally adjusted

[2007=100]

Industry	Index of aggregate weekly hours ¹					Index of aggregate weekly payrolls ²				
	Mar. 2010	Jan. 2011	Feb. 2011 ^P	Mar. 2011 ^P	Percent change from: Feb. 2011 - Mar. 2011 ^P	Mar. 2010	Jan. 2011	Feb. 2011 ^P	Mar. 2011 ^P	Percent change from: Feb. 2011 - Mar. 2011 ^P
Total private.....	91.4	92.6	93.1	93.3	0.2	97.9	101.0	101.6	101.8	0.2
Goods-producing.....	79.3	80.5	81.4	81.3	-0.1	85.7	88.7	89.3	89.3	0.0
Mining and logging.....	92.5	102.4	102.7	105.5	2.7	100.4	115.1	115.4	118.7	2.9
Construction.....	71.3	70.4	72.2	71.8	-0.6	78.0	77.8	79.7	79.3	-0.5
Manufacturing.....	82.5	84.4	85.1	85.0	-0.1	88.9	93.1	93.0	92.9	-0.1
Durable goods.....	79.5	82.3	83.0	83.2	0.2	87.1	92.2	92.2	92.4	0.2
Nondurable goods.....	88.2	88.3	88.6	88.6	0.0	93.0	94.9	94.6	94.7	0.1
Private service-providing.....	94.6	96.0	96.4	96.6	0.2	101.4	104.6	105.3	105.5	0.2
Trade, transportation, and utilities.....	91.3	92.5	92.9	93.0	0.1	96.2	98.7	99.3	99.4	0.1
Wholesale trade.....	90.0	92.0	92.5	93.0	0.5	98.0	100.6	101.1	101.3	0.2
Retail trade.....	91.9	92.0	92.3	92.4	0.1	94.4	95.2	95.7	95.6	-0.1
Transportation and warehousing.....	90.5	93.5	94.1	94.6	0.5	95.8	101.1	102.3	103.3	1.0
Utilities.....	97.3	99.2	98.3	99.7	1.4	103.8	108.8	107.5	109.8	2.1
Information.....	90.6	89.6	89.7	89.9	0.2	97.6	99.3	100.0	99.7	-0.3
Financial activities.....	92.9	92.7	92.7	92.8	0.1	98.3	99.7	99.8	99.8	0.0
Professional and business services.....	91.9	95.2	95.4	95.9	0.5	101.0	105.6	106.3	107.0	0.7
Education and health services.....	103.9	105.3	105.5	105.8	0.3	110.6	115.2	115.7	116.0	0.3
Leisure and hospitality.....	95.4	96.2	96.6	97.2	0.6	100.8	102.3	102.5	103.1	0.6
Other services.....	93.3	94.9	95.1	95.5	0.4	106.5	109.9	110.1	110.1	0.0

1 The indexes of aggregate weekly hours are calculated by dividing the current month's estimates of aggregate hours by the corresponding 2007 annual average aggregate hours. Aggregate hours estimates are the product of estimates of average weekly hours and employment.

2 The indexes of aggregate weekly payrolls are calculated by dividing the current month's estimates of aggregate weekly payrolls by the corresponding 2007 annual average aggregate weekly payrolls. Aggregate payrolls estimates are the product of estimates of average hourly earnings, average weekly hours, and employment.

p Preliminary

ESTABLISHMENT DATA
Table B-5. Employment of women on nonfarm payrolls by industry sector, seasonally adjusted

Industry	Women employees (in thousands)				Percent of all employees			
	Mar. 2010	Jan. 2011	Feb. 2011 ^P	Mar. 2011 ^P	Mar. 2010	Jan. 2011	Feb. 2011 ^P	Mar. 2011 ^P
Total nonfarm.....	64,649	64,662	64,728	64,814	49.9	49.6	49.6	49.6
Total private.....	51,810	52,037	52,112	52,199	48.5	48.1	48.1	48.1
Goods-producing.....	4,105	4,067	4,068	4,071	23.2	22.8	22.7	22.7
Mining and logging.....	96	101	102	103	14.1	13.7	13.7	13.6
Construction.....	736	712	713	711	13.3	13.0	12.9	12.9
Manufacturing.....	3,273	3,254	3,253	3,257	28.5	28.0	27.9	27.9
Durable goods.....	1,727	1,724	1,725	1,728	24.6	24.0	23.9	23.9
Nondurable goods.....	1,546	1,530	1,528	1,529	34.7	34.5	34.4	34.4
Private service-providing.....	47,705	47,970	48,044	48,128	53.5	53.1	53.1	53.1
Trade, transportation, and utilities.....	10,039	9,991	9,997	10,007	40.9	40.4	40.4	40.4
Wholesale trade.....	1,647.5	1,650.1	1,655.1	1,656.0	30.3	30.0	30.1	30.0
Retail trade.....	7,251.7	7,205.2	7,205.4	7,216.1	50.3	49.8	49.8	49.8
Transportation and warehousing.....	998.8	1,001.0	1,001.8	1,000.5	24.1	23.7	23.6	23.6
Utilities.....	140.5	134.3	134.3	134.6	25.3	24.5	24.4	24.5
Information.....	1,114	1,094	1,092	1,093	41.0	40.7	40.7	40.8
Financial activities.....	4,513	4,451	4,439	4,447	59.0	58.5	58.4	58.4
Professional and business services.....	7,401	7,512	7,554	7,575	44.7	44.3	44.4	44.4
Education and health services.....	15,019	15,223	15,244	15,265	77.2	76.9	76.9	76.8
Leisure and hospitality.....	6,794	6,832	6,850	6,877	52.4	52.3	52.2	52.3
Other services.....	2,825	2,867	2,868	2,864	53.0	52.9	52.8	52.7
Government.....	12,839	12,625	12,616	12,615	57.0	56.8	56.9	56.9

p Preliminary

ESTABLISHMENT DATA

Table B-6. Employment of production and nonsupervisory employees on private nonfarm payrolls by industry sector, seasonally adjusted¹

[In thousands]

Industry	Mar. 2010	Jan. 2011	Feb. 2011 ^p	Mar. 2011 ^p
Total private.....	88,134	89,058	89,274	89,492
Goods-producing.....	12,744	12,845	12,897	12,942
Mining and logging.....	502	555	557	569
Construction.....	4,201	4,157	4,183	4,189
Manufacturing.....	8,041	8,133	8,157	8,184
Durable goods.....	4,789	4,906	4,929	4,955
Nondurable goods.....	3,252	3,227	3,228	3,229
Private service-providing.....	75,390	76,213	76,377	76,550
Trade, transportation, and utilities.....	20,835	20,926	20,946	20,963
Wholesale trade.....	4,384.5	4,395.8	4,407.2	4,419.5
Retail trade.....	12,395.3	12,458.2	12,458.0	12,464.2
Transportation and warehousing.....	3,608.2	3,635.1	3,643.1	3,641.2
Utilities.....	446.6	436.8	437.9	437.8
Information.....	2,162	2,158	2,159	2,149
Financial activities.....	5,910	5,835	5,831	5,831
Professional and business services.....	13,552	13,917	13,971	14,049
Education and health services.....	17,050	17,343	17,374	17,412
Leisure and hospitality.....	11,429	11,491	11,543	11,587
Other services.....	4,452	4,543	4,553	4,559

¹ Data relate to production employees in mining and logging and manufacturing, construction employees in construction, and nonsupervisory employees in the service-providing industries. These groups account for approximately four-fifths of the total employment on private nonfarm payrolls.

^p Preliminary

ESTABLISHMENT DATA

Table B-7. Average weekly hours and overtime of production and nonsupervisory employees on private nonfarm payrolls by industry sector, seasonally adjusted¹

Industry	Mar. 2010	Jan. 2011	Feb. 2011 ^p	Mar. 2011 ^p
AVERAGE WEEKLY HOURS				
Total private.....	33.3	33.4	33.5	33.6
Goods-producing.....	40.0	40.2	40.7	40.7
Mining and logging.....	44.2	46.2	45.8	46.2
Construction.....	37.7	37.6	38.6	38.5
Manufacturing.....	41.0	41.1	41.4	41.5
Durable goods.....	41.2	41.5	41.7	41.9
Nondurable goods.....	40.7	40.5	40.8	40.8
Private service-providing.....	32.2	32.3	32.3	32.4
Trade, transportation, and utilities.....	33.1	33.5	33.6	33.8
Wholesale trade.....	37.8	38.3	38.4	38.5
Retail trade.....	30.1	30.4	30.3	30.5
Transportation and warehousing.....	36.7	37.4	37.9	38.1
Utilities.....	41.5	42.4	42.2	42.6
Information.....	36.5	36.3	36.4	36.3
Financial activities.....	36.1	36.3	36.3	36.2
Professional and business services.....	35.0	35.1	35.2	35.1
Education and health services.....	32.1	32.1	32.2	32.1
Leisure and hospitality.....	25.0	24.7	24.8	24.9
Other services.....	30.7	30.7	30.7	30.8
AVERAGE OVERTIME HOURS				
Manufacturing.....	3.7	4.1	4.2	4.3
Durable goods.....	3.7	4.1	4.3	4.4
Nondurable goods.....	3.7	4.0	4.0	4.1

¹ Data relate to production employees in mining and logging and manufacturing, construction employees in construction, and nonsupervisory employees in the service-providing industries. These groups account for approximately four-fifths of the total employment on private nonfarm payrolls.

^p Preliminary

ESTABLISHMENT DATA

Table B-8. Average hourly and weekly earnings of production and nonsupervisory employees on private nonfarm payrolls by industry sector, seasonally adjusted¹

Industry	Average hourly earnings				Average weekly earnings			
	Mar. 2010	Jan. 2011	Feb. 2011 ^p	Mar. 2011 ^p	Mar. 2010	Jan. 2011	Feb. 2011 ^p	Mar. 2011 ^p
Total private.....	\$18.93	\$19.31	\$19.32	\$19.30	\$ 630.37	\$ 644.95	\$ 647.22	\$ 648.48
Goods-producing.....	20.16	20.55	20.58	20.59	806.40	826.11	837.61	838.01
Mining and logging.....	23.85	24.14	24.24	24.38	1,054.17	1,115.27	1,110.19	1,126.36
Construction.....	23.12	23.48	23.49	23.48	871.62	882.85	906.71	903.98
Manufacturing.....	18.49	18.91	18.91	18.92	758.09	777.20	782.87	785.18
Durable goods.....	19.68	20.14	20.12	20.09	810.82	835.81	839.00	841.77
Nondurable goods.....	16.72	16.99	17.02	17.07	680.50	688.10	694.42	696.46
Private service-providing.....	18.67	19.05	19.05	19.02	601.17	615.32	615.32	616.25
Trade, transportation, and utilities.....	16.72	17.04	17.03	17.02	553.43	570.84	572.21	575.28
Wholesale trade.....	21.36	21.90	21.86	21.86	807.41	838.77	839.42	841.61
Retail trade.....	13.17	13.37	13.37	13.35	396.42	406.45	405.11	407.18
Transportation and warehousing.....	19.12	19.47	19.38	19.30	701.70	728.18	734.50	735.33
Utilities.....	29.65	30.23	30.15	30.59	1,230.48	1,281.75	1,272.33	1,303.13
Information.....	25.64	26.23	26.32	26.14	935.86	952.15	958.05	948.88
Financial activities.....	21.40	21.74	21.63	21.64	772.54	789.16	785.17	783.37
Professional and business services.....	22.62	23.02	23.02	23.06	791.70	808.00	810.30	809.41
Education and health services.....	19.91	20.48	20.50	20.45	639.11	657.41	660.10	656.45
Leisure and hospitality.....	11.32	11.32	11.35	11.36	283.00	279.60	281.48	282.86
Other services.....	16.98	17.22	17.21	17.14	521.29	528.65	528.35	527.91

¹ Data relate to production employees in mining and logging and manufacturing, construction employees in construction, and nonsupervisory employees in the service-providing industries. These groups account for approximately four-fifths of the total employment on private nonfarm payrolls.

p Preliminary

ESTABLISHMENT DATA

Table B-9. Indexes of aggregate weekly hours and payrolls for production and nonsupervisory employees on private nonfarm payrolls by industry sector, seasonally adjusted¹

[2002=100]

Industry	Index of aggregate weekly hours ²					Index of aggregate weekly payrolls ³				
	Mar. 2010	Jan. 2011	Feb. 2011 ^P	Mar. 2011 ^P	Percent change from: Feb. 2011 - Mar. 2011 ^P	Mar. 2010	Jan. 2011	Feb. 2011 ^P	Mar. 2011 ^P	Percent change from: Feb. 2011 - Mar. 2011 ^P
Total private.....	98.1	99.4	99.9	100.5	0.6	124.0	128.2	129.0	129.6	0.5
Goods-producing.....	77.9	78.9	80.2	80.5	0.4	96.2	99.3	101.1	101.5	0.4
Mining and logging.....	117.9	136.3	135.6	139.7	3.0	163.5	191.3	191.1	198.1	3.7
Construction.....	79.3	78.3	80.8	80.8	0.0	99.0	99.2	102.5	102.4	-0.1
Manufacturing.....	75.7	76.7	77.5	77.9	0.5	91.5	94.9	95.8	96.4	0.6
Durable goods.....	74.1	76.5	77.2	78.0	1.0	91.1	96.2	97.0	97.8	0.8
Nondurable goods.....	78.0	77.0	77.6	77.6	0.0	92.1	92.5	93.3	93.6	0.3
Private service-providing.....	103.8	105.3	105.5	106.1	0.6	132.9	137.5	137.8	138.3	0.4
Trade, transportation, and utilities.....	96.1	97.7	98.1	98.8	0.7	114.7	118.8	119.2	119.9	0.6
Wholesale trade.....	97.6	99.1	99.7	100.2	0.5	122.8	127.9	128.3	129.0	0.5
Retail trade.....	94.4	95.9	95.5	96.2	0.7	106.6	109.9	109.5	110.1	0.5
Transportation and warehousing.....	99.7	102.3	103.9	104.4	0.5	120.9	126.4	127.8	127.9	0.1
Utilities.....	94.8	94.7	94.5	95.4	1.0	117.3	119.5	118.9	121.8	2.4
Information.....	90.1	89.4	89.7	89.1	-0.7	114.3	116.1	116.9	115.2	-1.5
Financial activities.....	102.1	101.4	101.3	101.0	-0.3	135.1	136.2	135.5	135.2	-0.2
Professional and business services.....	106.3	109.5	110.2	110.5	0.3	143.1	150.0	151.0	151.6	0.4
Education and health services.....	118.1	120.1	120.7	120.6	-0.1	154.5	161.7	162.6	162.1	-0.3
Leisure and hospitality.....	104.7	104.0	104.9	105.8	0.9	134.6	133.7	135.2	136.4	0.9
Other services.....	95.9	97.8	98.1	98.5	0.4	118.6	122.8	123.0	123.0	0.0

1 Data relate to production employees in mining and logging and manufacturing, construction employees in construction, and nonsupervisory employees in the service-providing industries. These groups account for approximately four-fifths of the total employment on private nonfarm payrolls.

2 The indexes of aggregate weekly hours are calculated by dividing the current month's estimates of aggregate hours by the corresponding 2002 annual average aggregate hours. Aggregate hours estimates are the product of estimates of average weekly hours and employment.

3 The indexes of aggregate weekly payrolls are calculated by dividing the current month's estimates of aggregate weekly payrolls by the corresponding 2002 annual average aggregate weekly payrolls. Aggregate payrolls estimates are the product of estimates of average hourly earnings, average weekly hours, and employment.

p Preliminary