

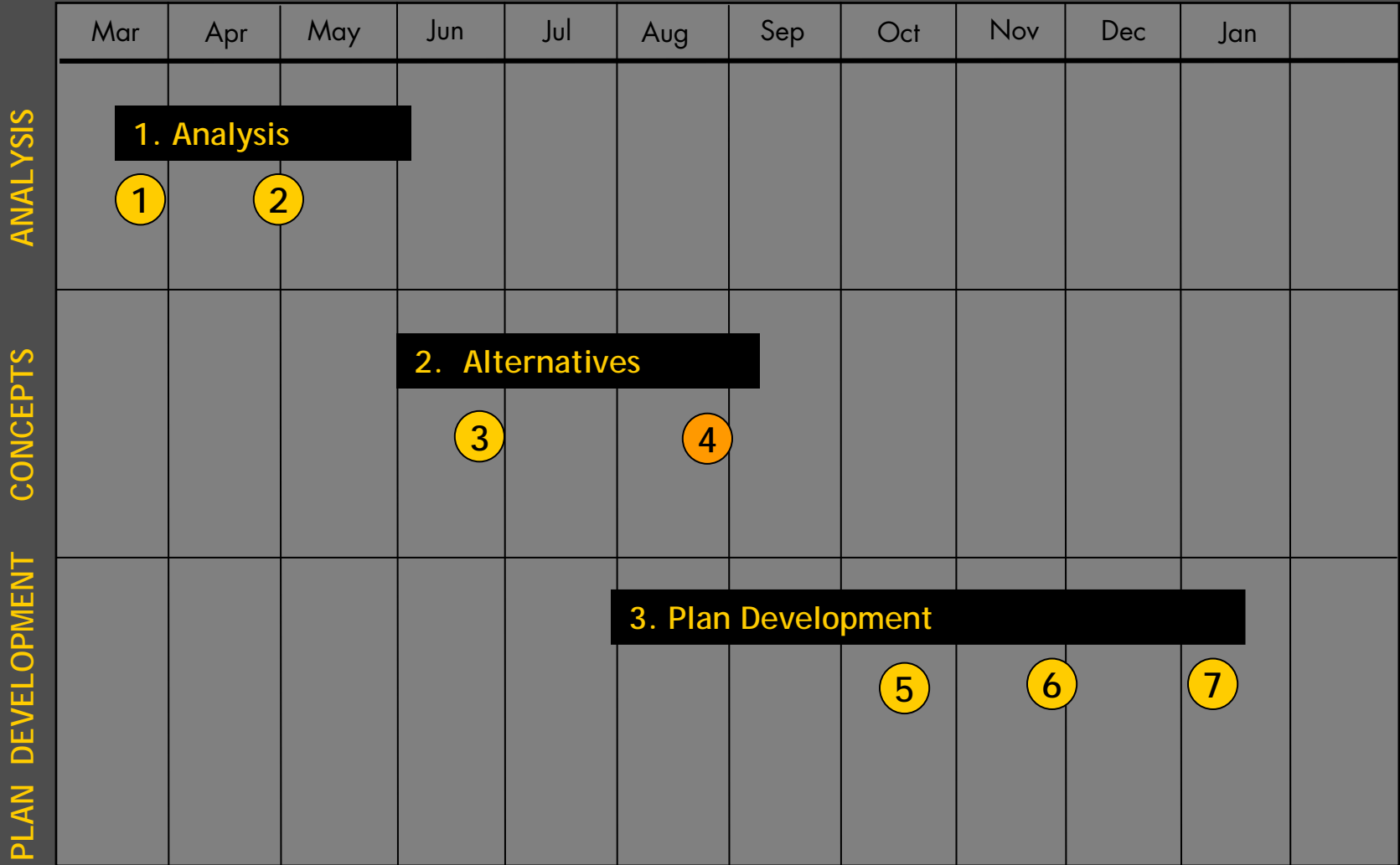


# UNIVERSITY OF NORTH TEXAS

Work Session 4

August 17 - 18, 2004

# SCHEDULE



# PROGRAM SUMMARY - LONG TERM

## Space Requirements for 41,000 headcount

	Headcount	FTE	Total GSF	GSF/FTE	Estimated Shortfall
Current	31,000	23,668	3,525,659	150	

## 170 GSF / FTE

Scenario 1	41,000	31,160	4,674,000	170	<b>1,271,541</b>
------------	--------	--------	-----------	-----	------------------

Research Park can accommodate the Engineering with a projected enrollment of 1,000 - 1,600 students (240,000 GSF)

# PROGRAM SUMMARY - PARKING

## Parking Requirements for 41,000 headcount

	Headcount	FTE	Total Demand *	Estimated Shortfall
Current	31,000	23,668	9,511	
Scenario 1	41,000	31,160	<b>12,640</b>	3,133

\*Excludes research park

Source: DeShazo / Tang Associates

# PROGRAM SUMMARY - HOUSING

## Existing Housing - 2004

	Headcount 2004	Residents	% Resident Occupancy
Freshmen	4,682	3,135	65%
Sophomores	4,910	1,013	21%
Juniors	5,528	513	9%
Seniors	7,378	263	4%
<b>Sub-total</b>	<b>22,618</b>	<b>4,924</b>	<b>22%</b>
Graduates	7,565	50	1%
<b>Total</b>	<b>30,183</b>	<b>4,974</b>	<b>16%</b>

# PROGRAM SUMMARY - HOUSING

## Housing for 41,000 (based on existing occupancy patterns)

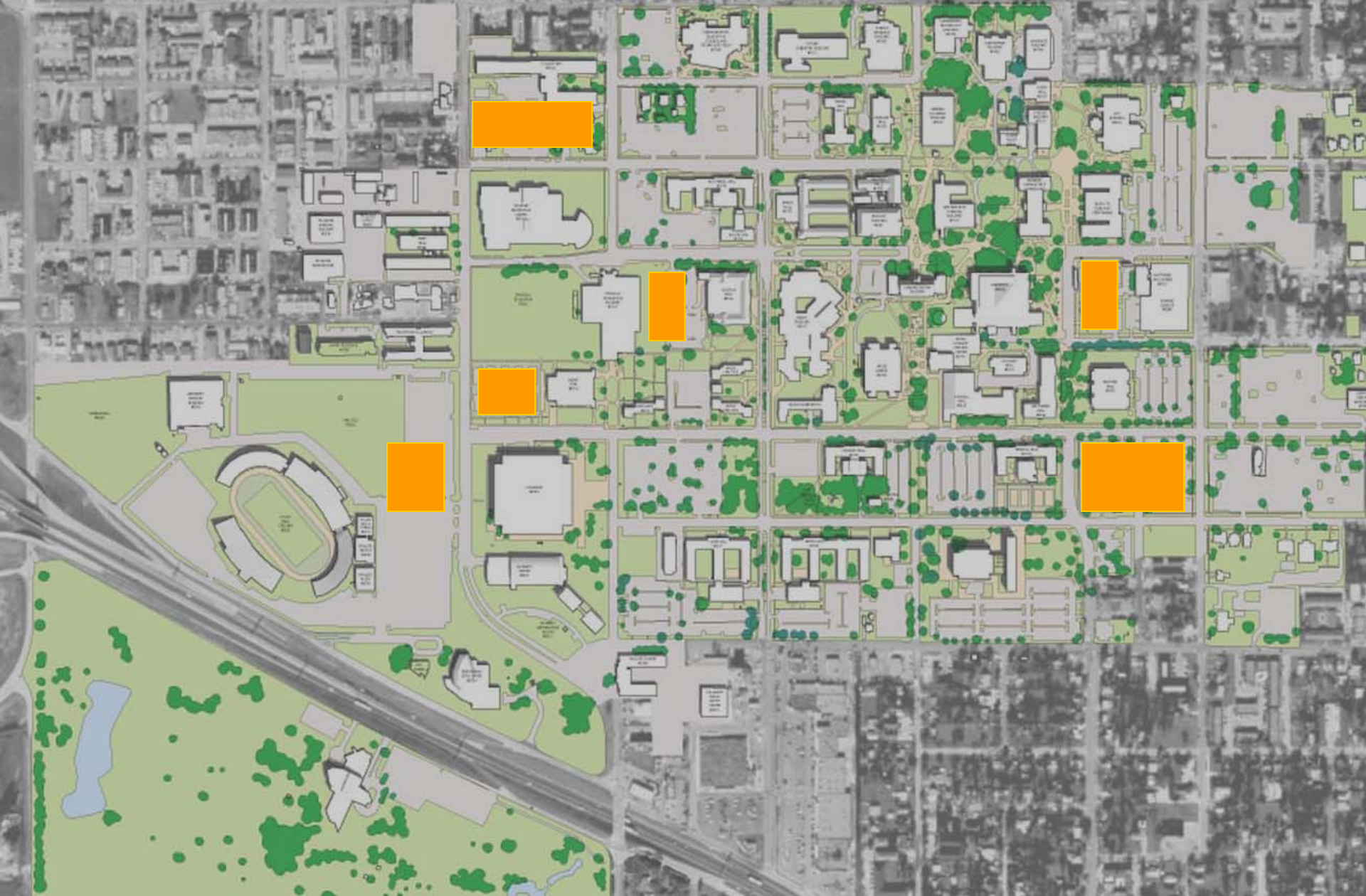
	Headcount	Residents	Existing Beds	New Beds	% Resident Occupancy
Freshmen	6,531	4,245	3,135	1,110	65%
Sophomores	6,678	1,402	1,013	389	21%
Juniors	7,518	677	513	164	9%
Seniors	10,034	401	263	138	4%
Sub-total	30,760	6,725	4,924	1,801	22%
Graduates	10,288	103	50	53	1%
Total	41,049	6,828	4,974	1,854	17%

# PROGRAM SUMMARY - HOUSING

Housing for 41,000 (increasing upper division and graduate housing)

	Headcount	Residents	Existing Beds	New Beds	% Resident Occupancy
Freshmen	6,531	4,245	3,135	1,110	65%
Sophomores	6,678	1,670	1,013	657	25%
Juniors	7,518	752	513	239	10%
Seniors	10,034	501	263	339	5%
Sub-total	30,760	7,168	4,924	2,244	23%
Graduates	10,288	514	50	514	5%
Total	41,049	7,682	4,974	2,759	19%

# POTENTIAL GARAGE LOCATIONS





# BUS OPERATIONS

- Multiple transfer locations: Highland at Welch, Fouts Field, Mulberry at Avenue B
- Access to Core area from stop at Ave B and Highland
- Elimination of transfer point at Union/ Parking Garage - expansion of parking garage

# ALTERNATIVE A: Compact Core

- Infill and maximize surface parking
- Maple Street Housing infill
- Redefinition of Eagle Drive edge
- Fouts Field land reserve framework
- Avenue C traffic calming & landscape enhancement
- Chestnut Street Pedestrian Improvements
- Avenue B Mall Improvements

# ALTERNATIVE A: E & G Space



E&G Space	1,703,000 GSF
-----------	---------------

# ALTERNATIVE A: Open Space Linkage



# ALTERNATIVE A: Housing



Housing	Beds
Core Campus	1,850
Eagle Point	600
	<b>2,450</b>

# HOUSING - Defining the Street Edge (Eagle Drive)



# HOUSING - Quadrangles with social amenities



# ALTERNATIVE A: Parking



Parking	Spaces
Surface Parking	7,025
Garage Parking	3,200
Eagle Point	2,085
	<b>12,310</b>



# ALTERNATIVE A: Gateway Area



Housing Quad

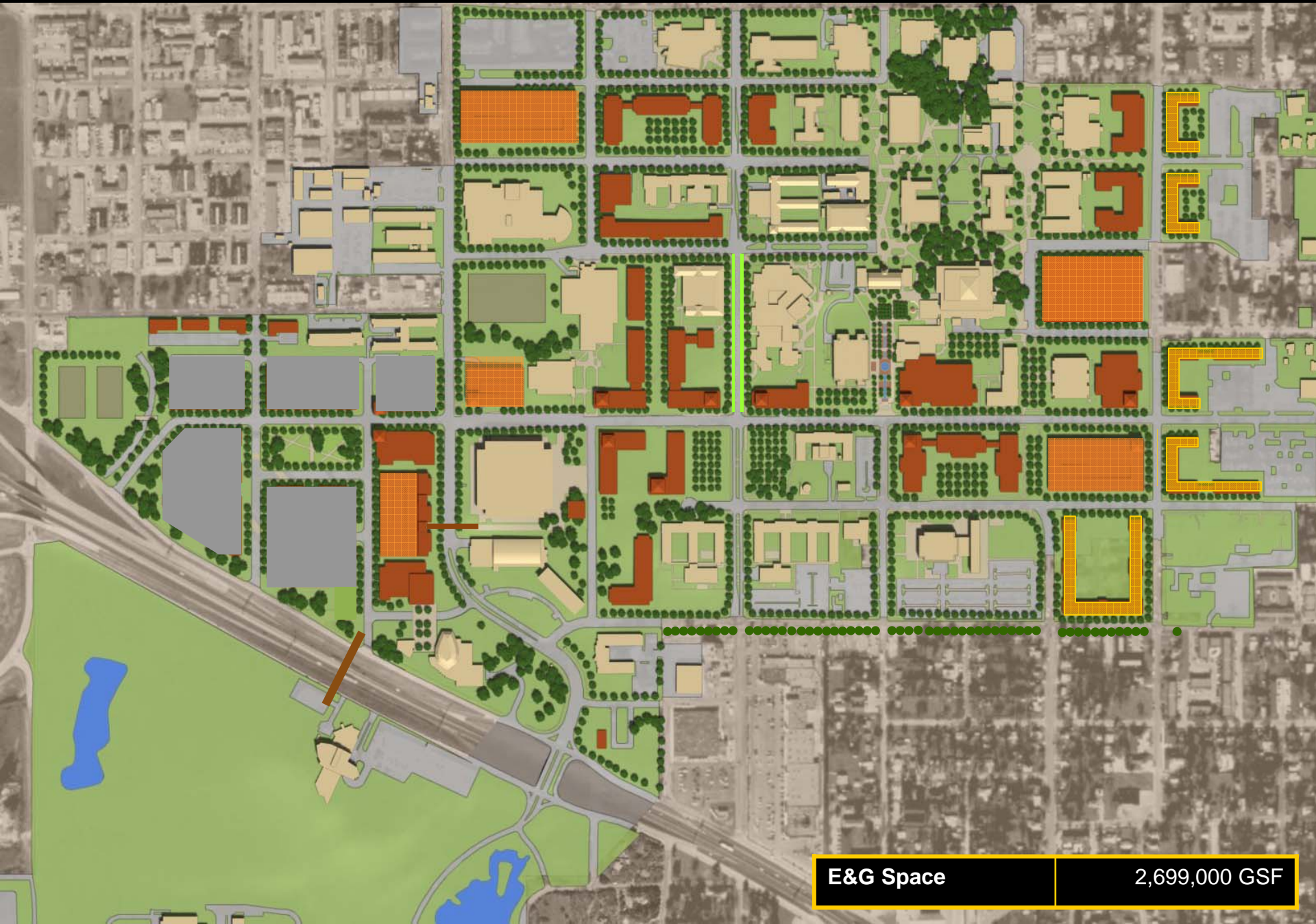
# ALTERNATIVE A: Highland Avenue



## ALTERNATIVE B: *West campus mixed-use corridor*

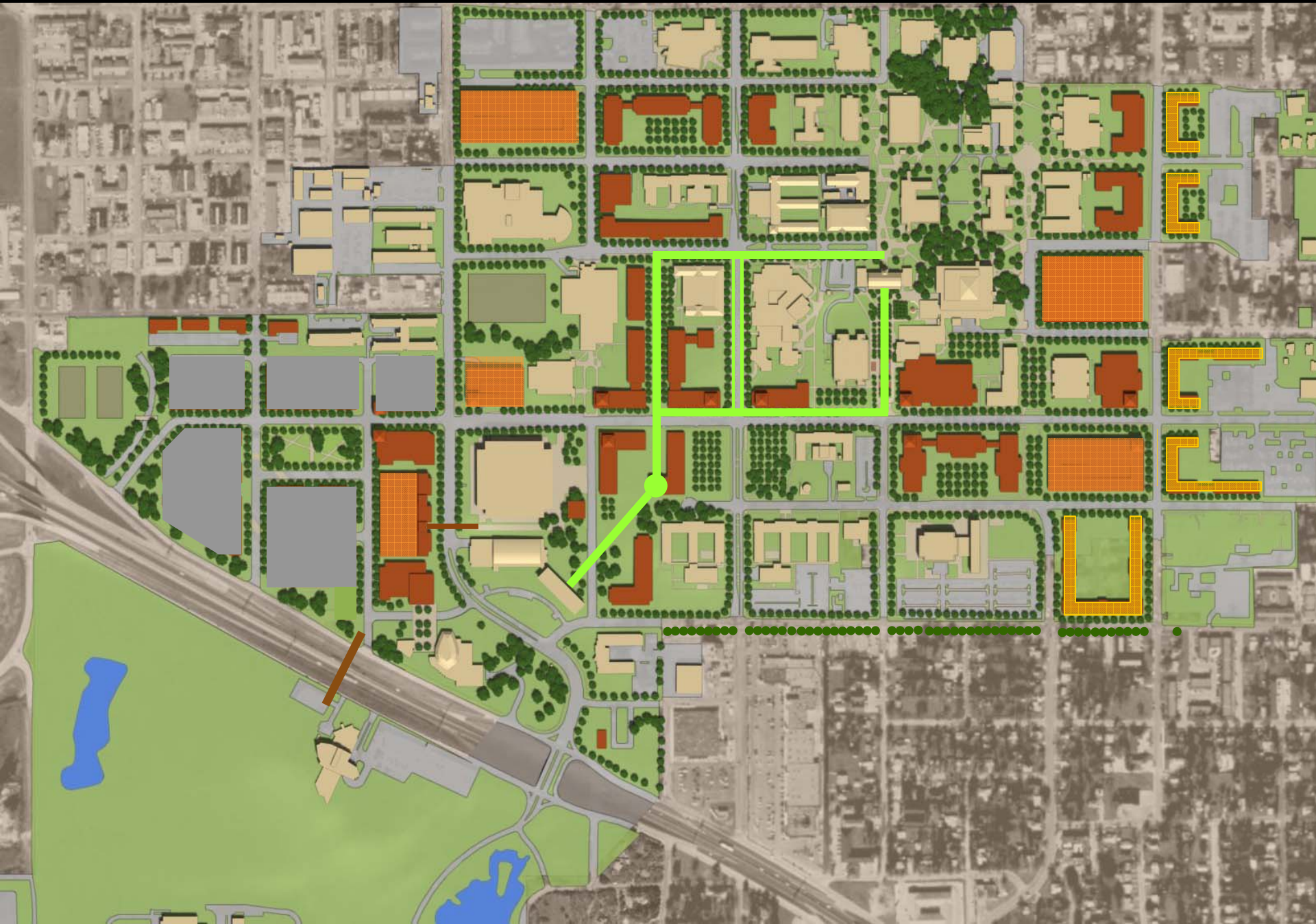
- New north - south pedestrian corridor to connect Chestnut to Gateway Center
- Mix of academic and student life / services
- Redefinition of Welch Street with housing
- West side continuing ed center with parking
- Fouts Field land reserve framework
- Avenue C traffic calming & landscape enhancement
- Chestnut Street Pedestrian Improvements
- Avenue B Mall Improvements

# ALTERNATIVE B: E & G Space



<b>E&amp;G Space</b>	<b>2,699,000 GSF</b>
----------------------	----------------------

# ALTERNATIVE B: Open Space Linkage

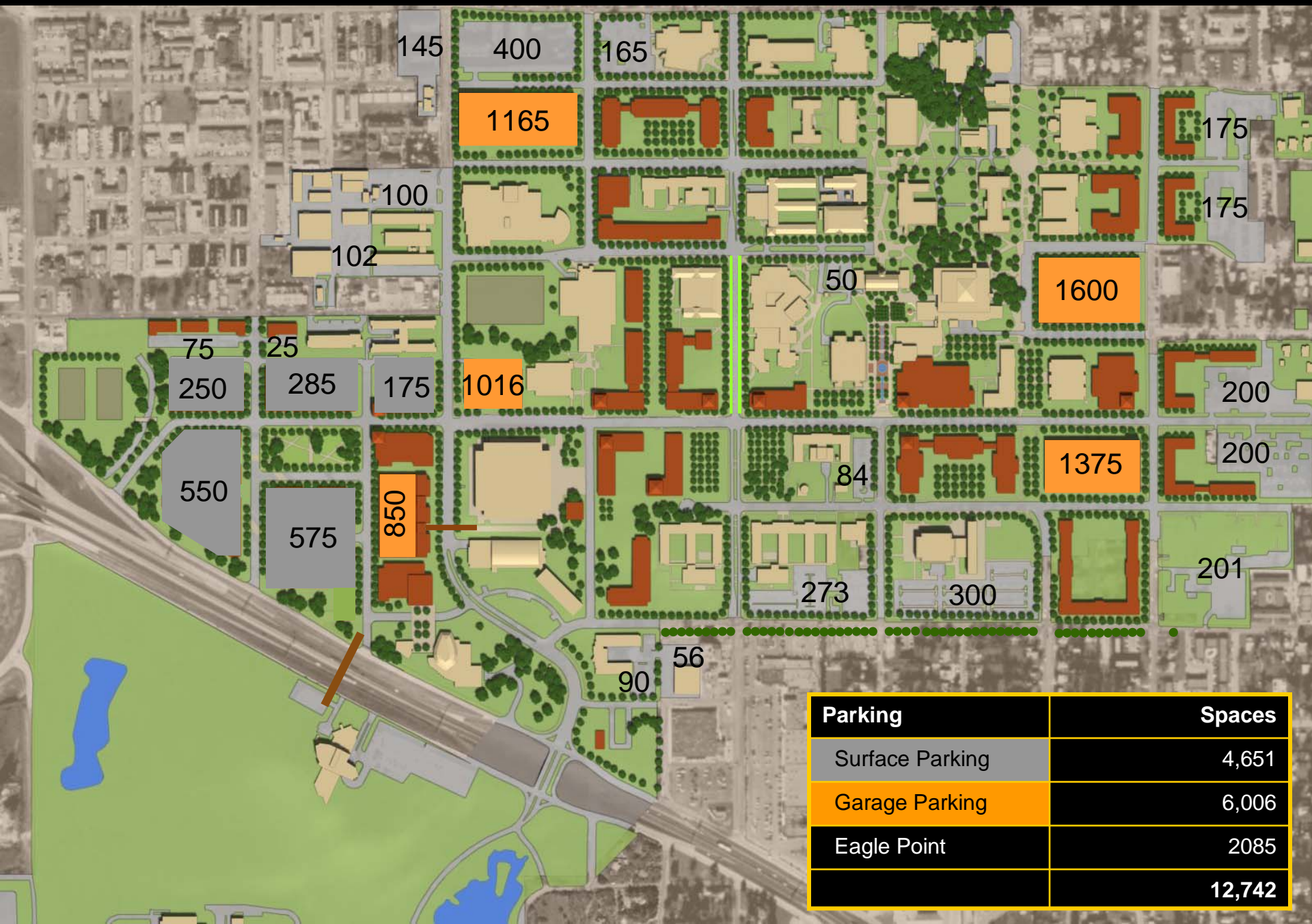


# ALTERNATIVE B: Housing



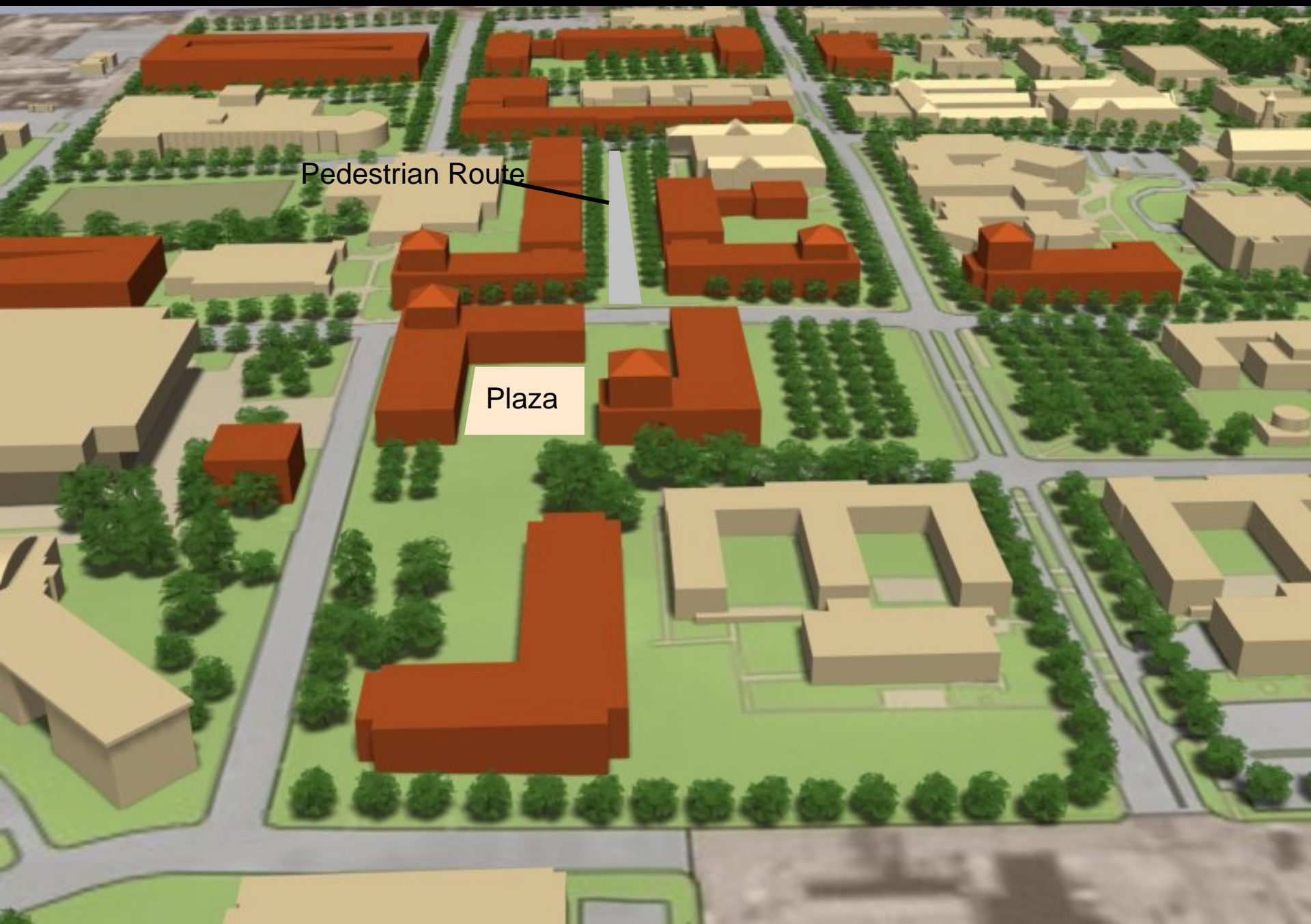
New Housing	Beds
Core Campus	1,900
Eagle Point	600
	<b>2,500</b>

# ALTERNATIVE B: Parking



Parking	Spaces
Surface Parking	4,651
Garage Parking	6,006
Eagle Point	2,085
	<b>12,742</b>

# ALTERNATIVE B: Gateway Area



Pedestrian Route

Plaza





# BOOKSTORE

EXPRESS STORE

## Bay Tree Bookstore

Hours  
Monday Through Friday  
8:30 A.M. To 5:30 P.M.  
Saturday  
10:00 A.M. To 4:00 P.M.  
Closed Sunday  
Bookstore is open extended hours  
during certain special events  
Details will be posted.





# ALTERNATIVE B: Highland Avenue



# ALTERNATIVE C: University Commons

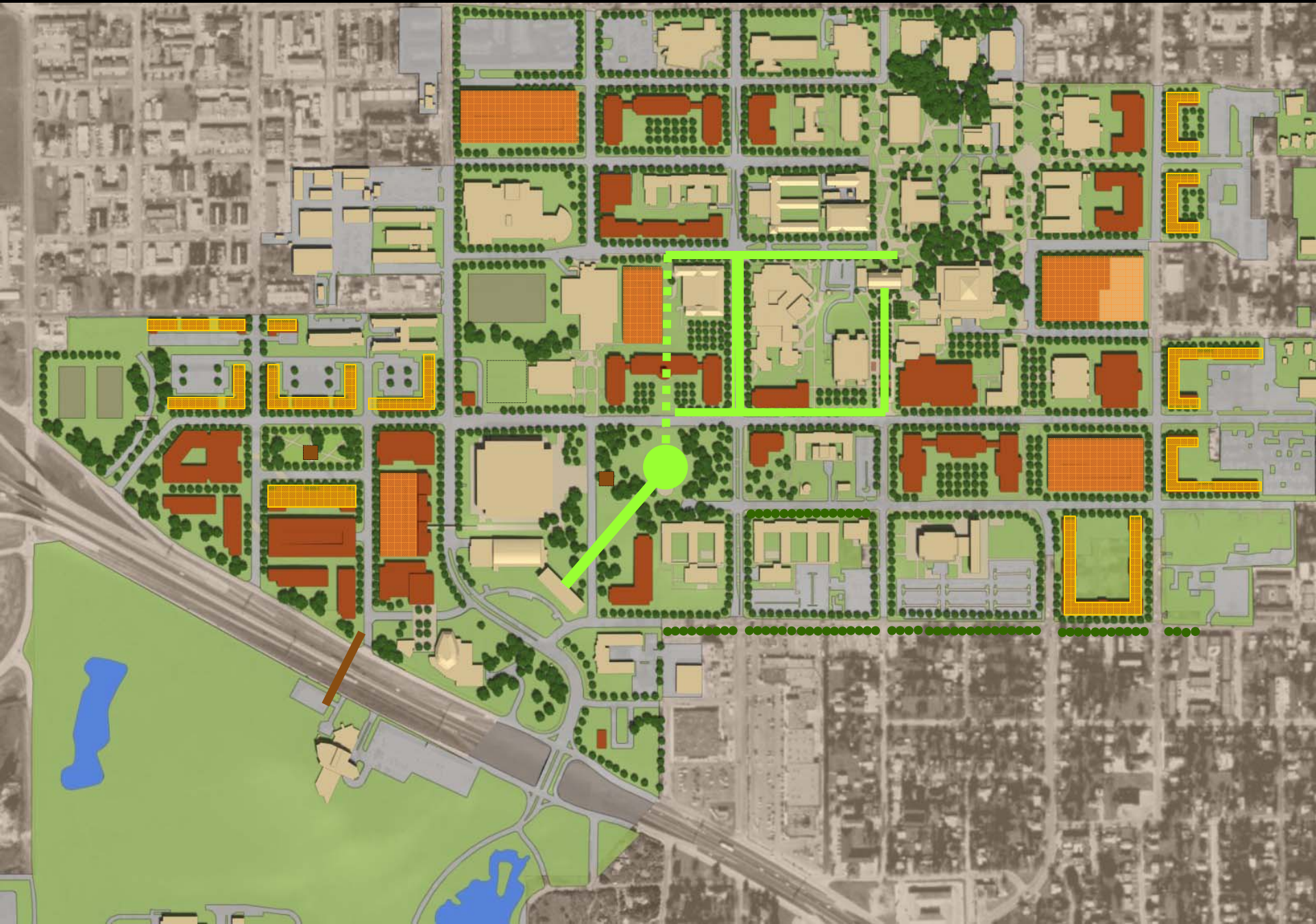
- New monumental green for university and community activities
- New landmark building and commons on Highland forms gateway
- Redefinition of Welch Street with housing
- Redevelopment of Fouts Field to include housing, continuing ed, student support space, parking, opera
- Visitor Center at North Texas & I-35
- Avenue C traffic calming & landscape enhancement
- Chestnut Street Pedestrian Improvements
- Avenue B Mall Improvements

# ALTERNATIVE C: E & G Space



<b>E&amp;G Space</b>	<b>3,031,000 GSF</b>
----------------------	----------------------

# ALTERNATIVE C: Open Space Linkage



# ALTERNATIVE C: Housing

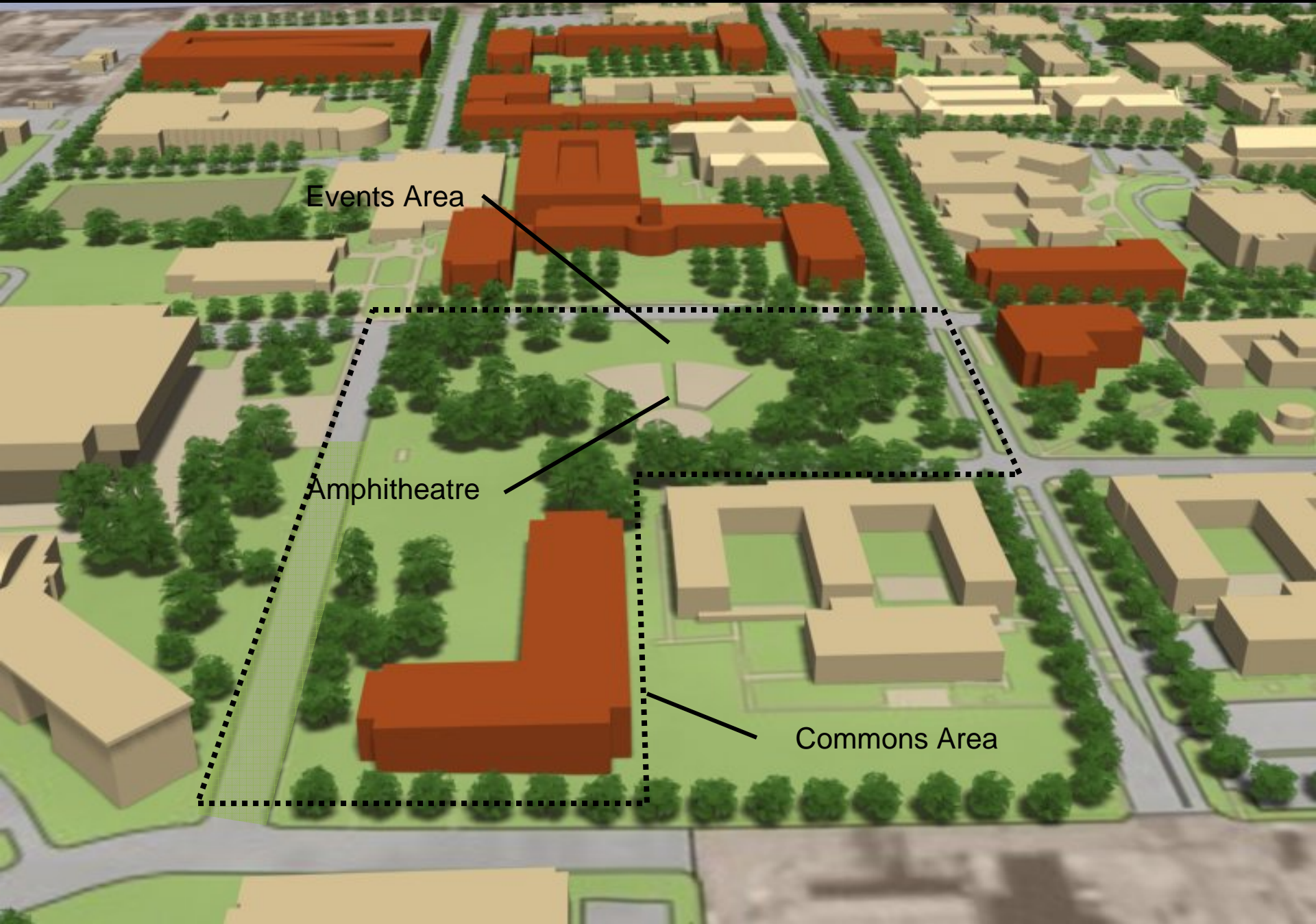




# ALTERNATIVE C: Parking



# ALTERNATIVE C: University Commons



Events Area

Amphitheatre

Commons Area

# University Commons: Amphitheatre



# University Commons: Events Area for graduation / concerts, etc



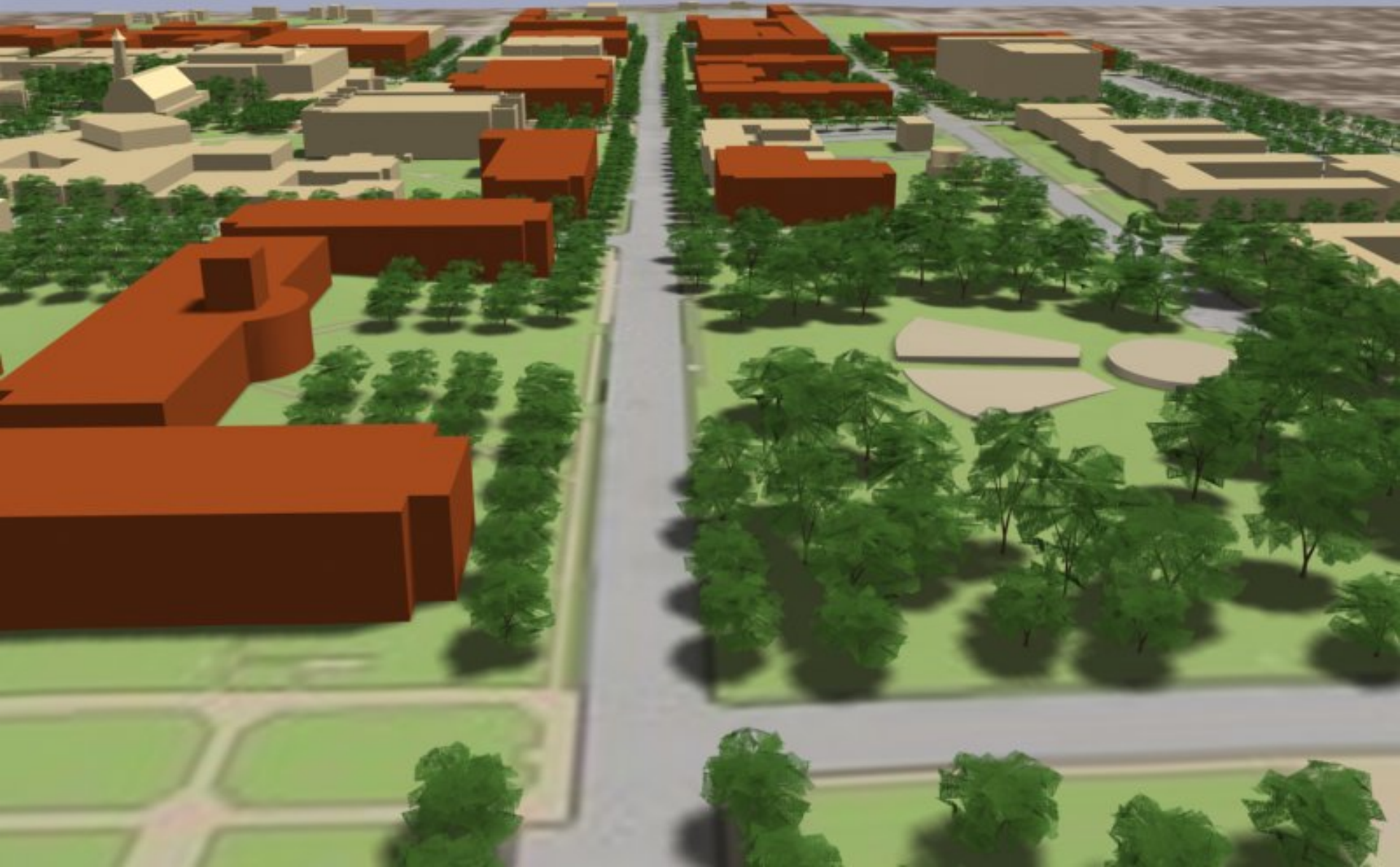
# University Commons: Events Area for graduation / concerts, etc



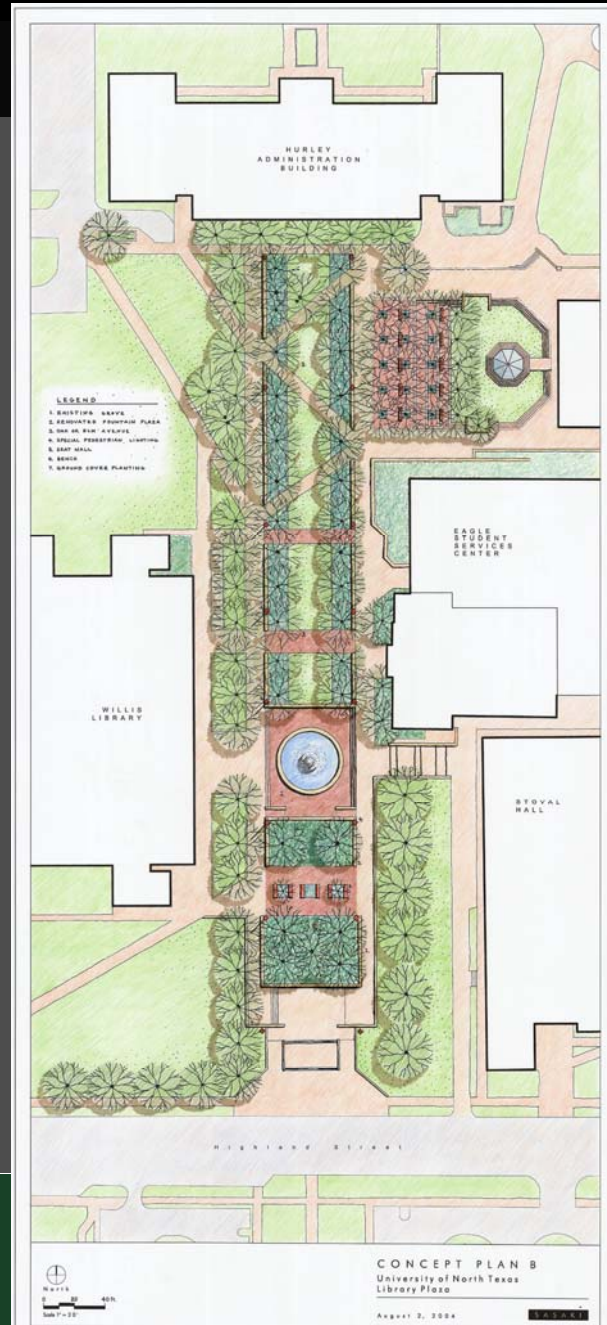
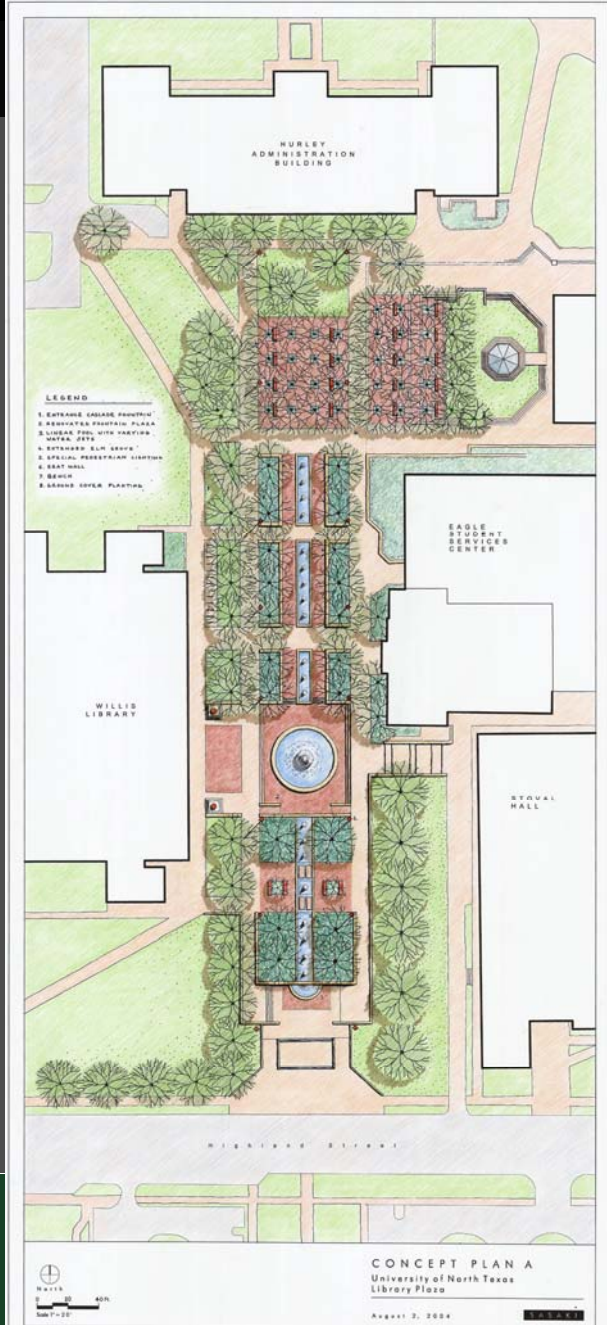
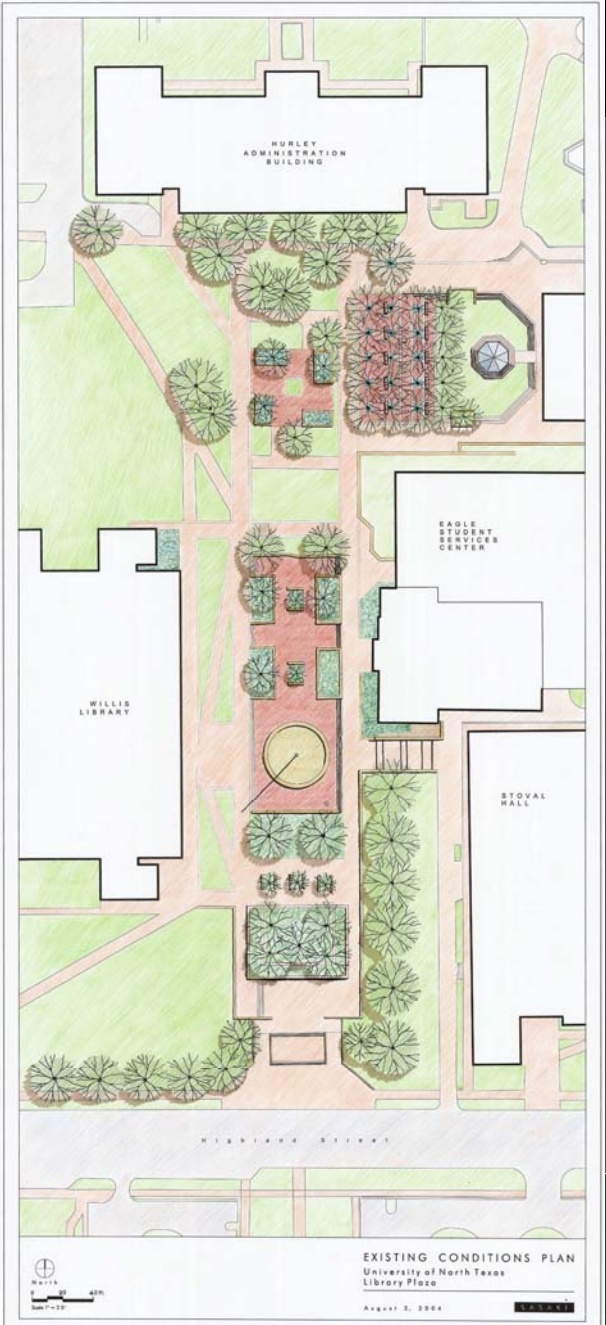
# University Commons: Events Area



# ALTERNATIVE C: Highland Avenue



# AVENUE B MALL: Options





# AVENUE B MALL:





# VISITOR CENTER: Near-term Location



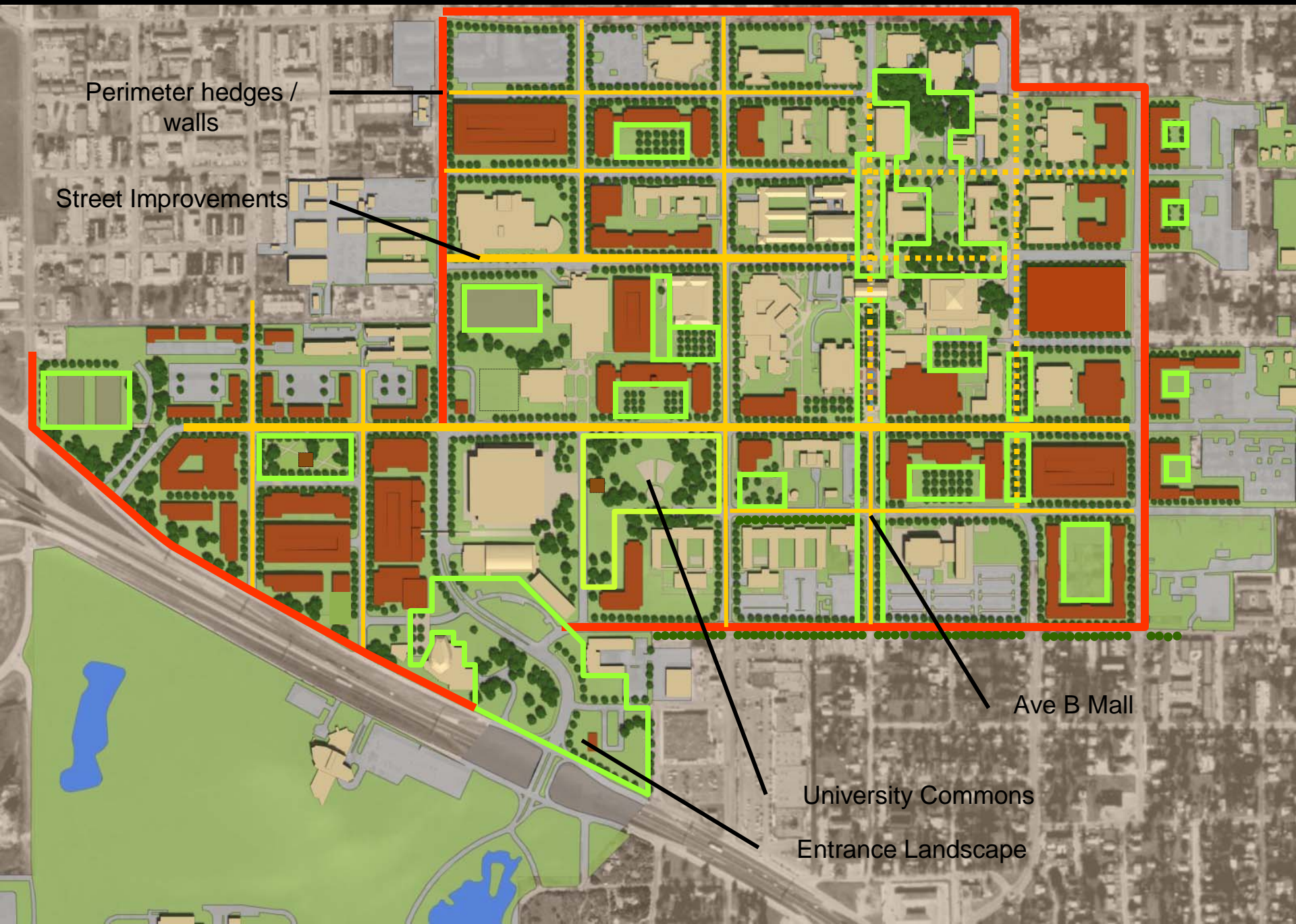
Visitor Center

# VISITOR CENTER: Potential Long-term Location



Visitor Center

# OPEN SPACE STRUCTURE



Perimeter hedges / walls

Street Improvements

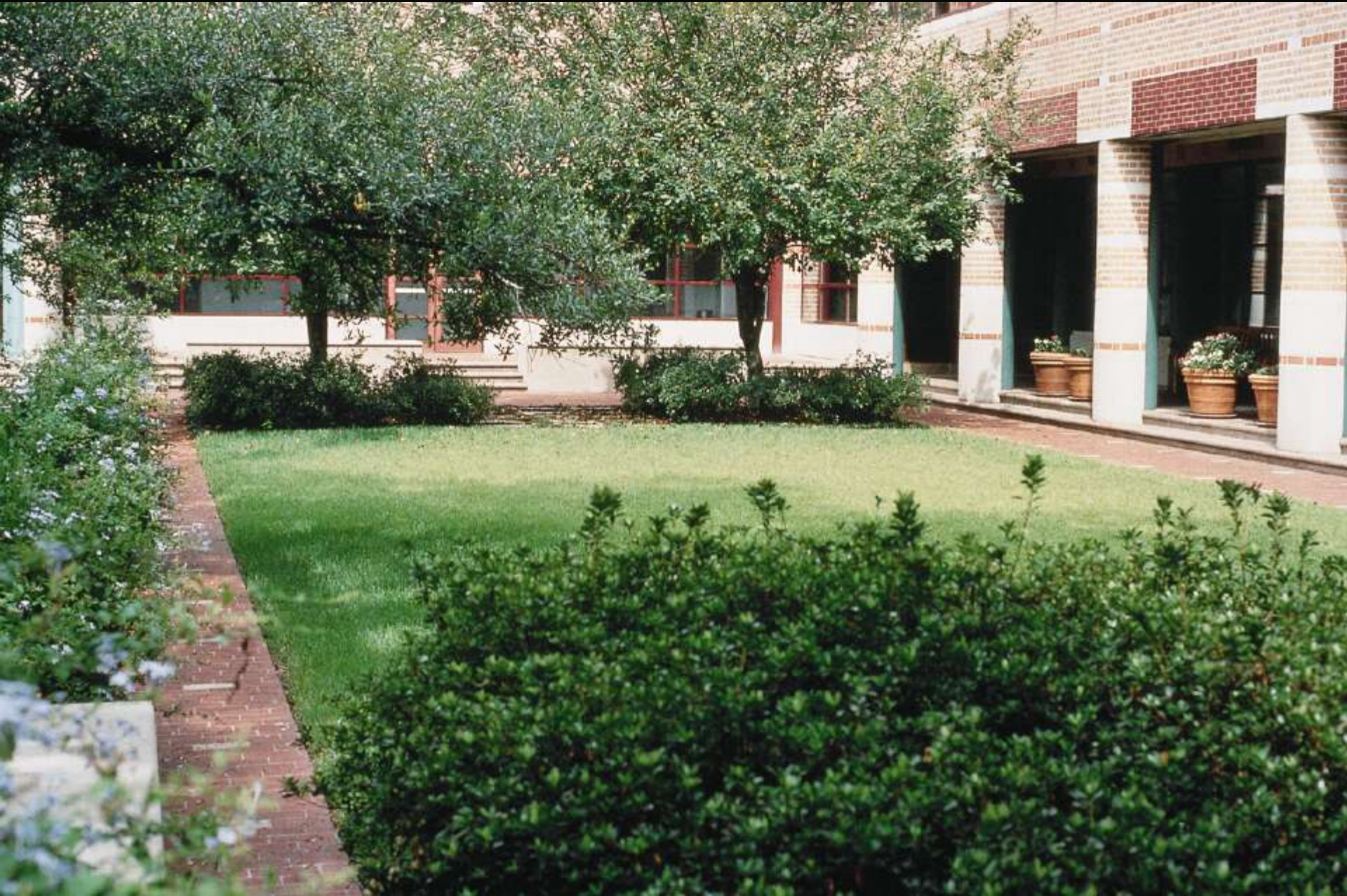
Ave B Mall

University Commons  
Entrance Landscape

# OPEN SPACE STRUCTURE: Street Trees



# OPEN SPACE STRUCTURE: Courtyards



# OPEN SPACE STRUCTURE: Groves & Paths





# OPEN SPACE STRUCTURE: Chestnut Avenue



# OPEN SPACE STRUCTURE: Chestnut Avenue



# OPEN SPACE STRUCTURE: *Avenue C*



# OPEN SPACE STRUCTURE: Avenue C



# OPEN SPACE STRUCTURE: I-35 Entrance



# OPEN SPACE STRUCTURE: North Texas Boulevard



# OPEN SPACE STRUCTURE: North Texas Boulevard



# PROGRAM SUMMARY - EAGLE POINT

## Eagle Point Program

Facility	
Stadium	30,000 to 50,000 seats
Tennis Facility	12 courts
Track	1,500 to 4,000 seats
Baseball field	1,100 to 6,000 seats
Practice / Rec Field	6 fields
Practice tent	40-50 yard "bubble"
Picnic Pavilion	60-100 seats
Additional Housing	600 beds
Mixed-Use Development	
Greenway	
Retention	



# EAGLE POINT CAMPUS



end