



# UNIVERSITY OF NORTH TEXAS

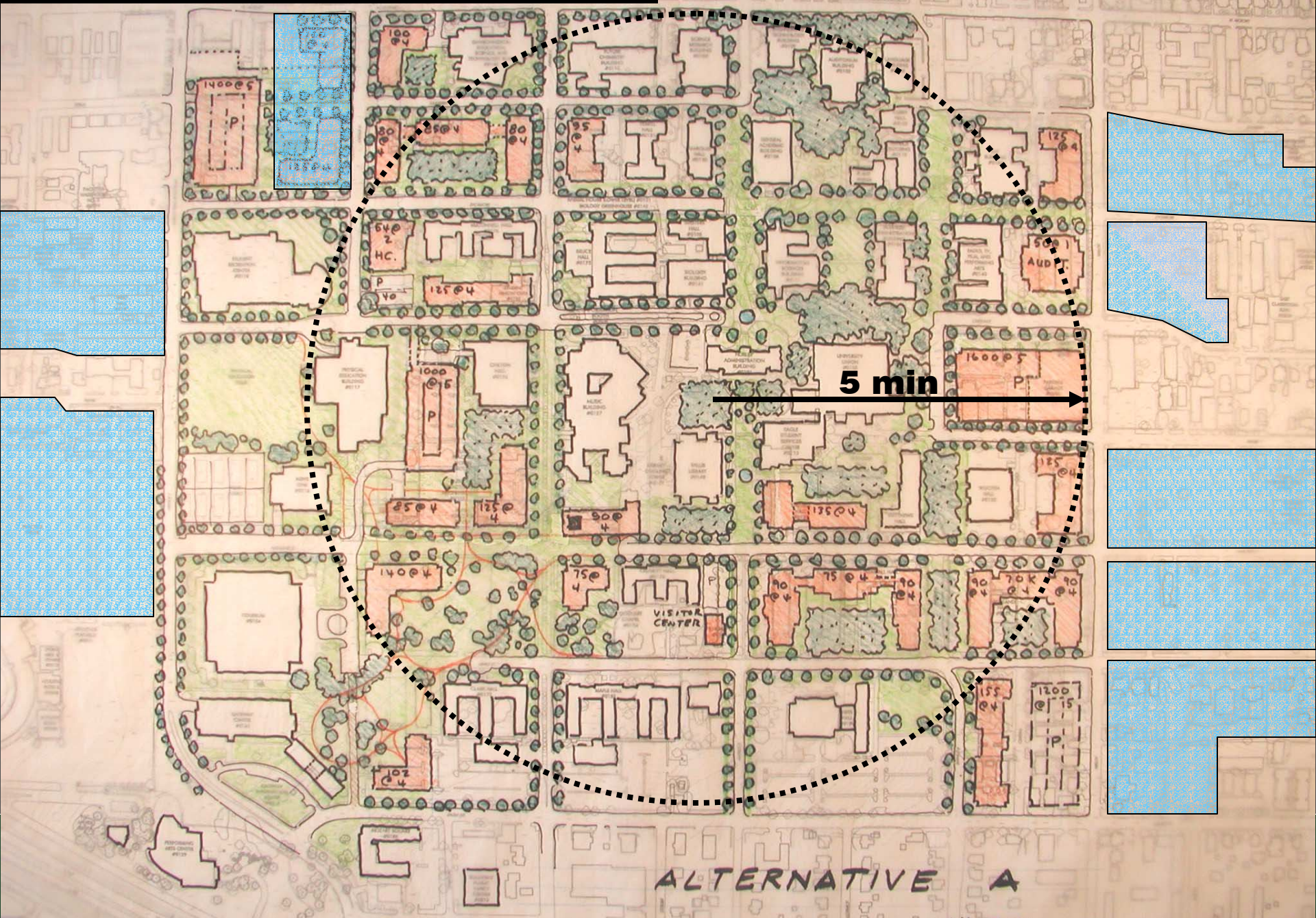
**Work Session 3**

July 1, 2004

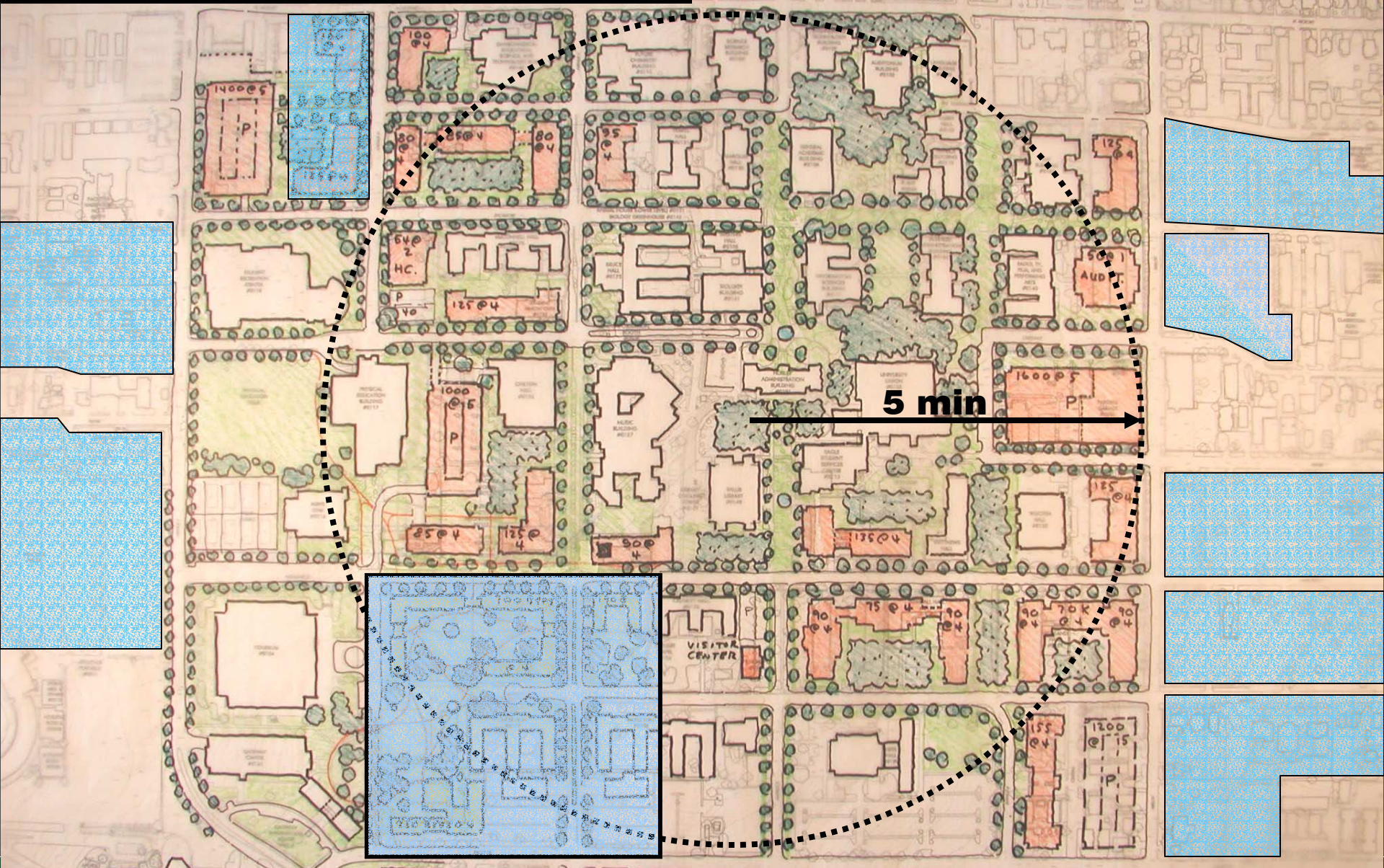
# A G E N D A

1. Housing
2. Visitor Center and Wayfinding
3. Circulation
4. Transit
5. Eagle Point
6. Land Use

# Housing Capacity

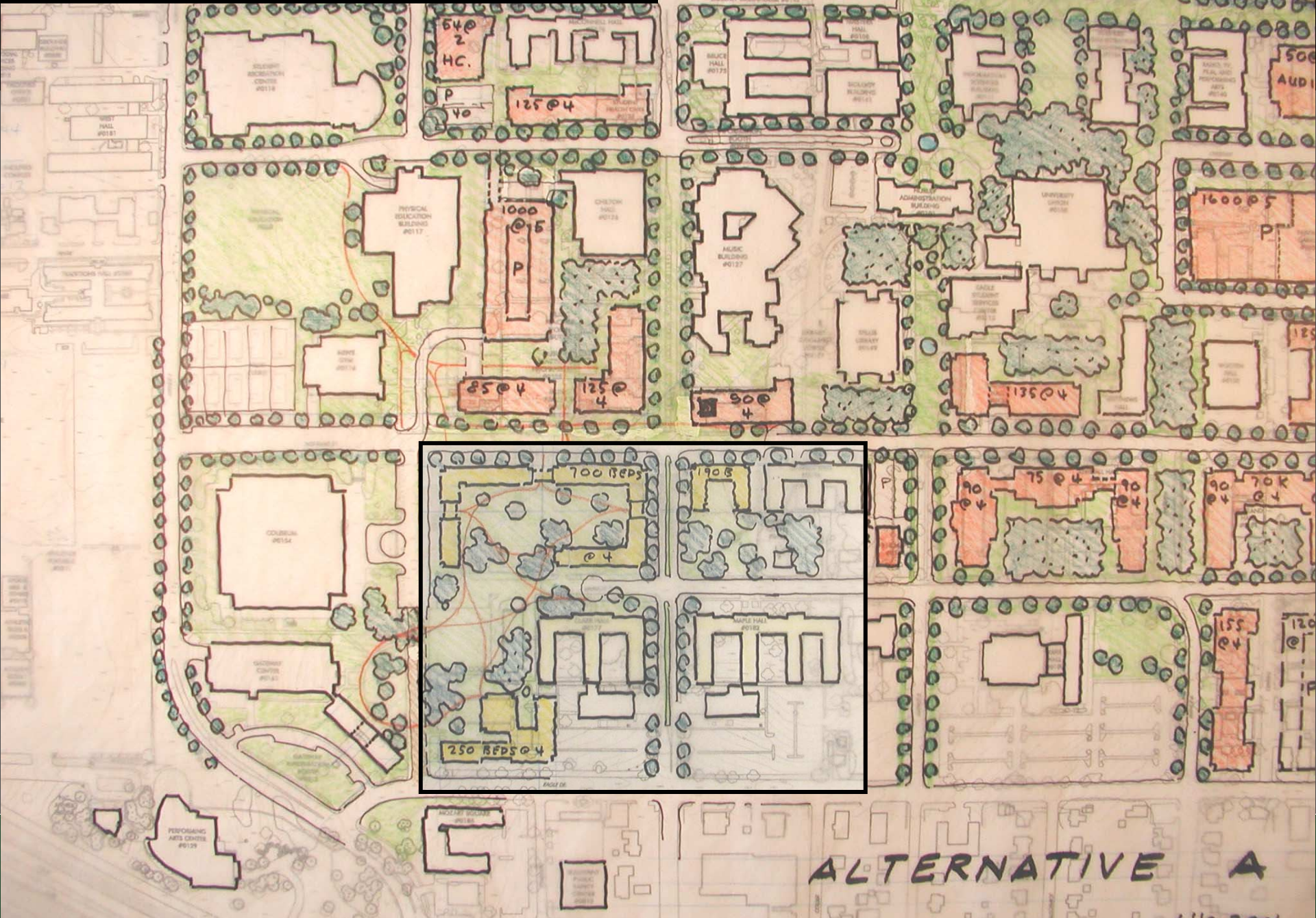


# Housing Capacity



ALTERNATIVE A

# Housing Capacity

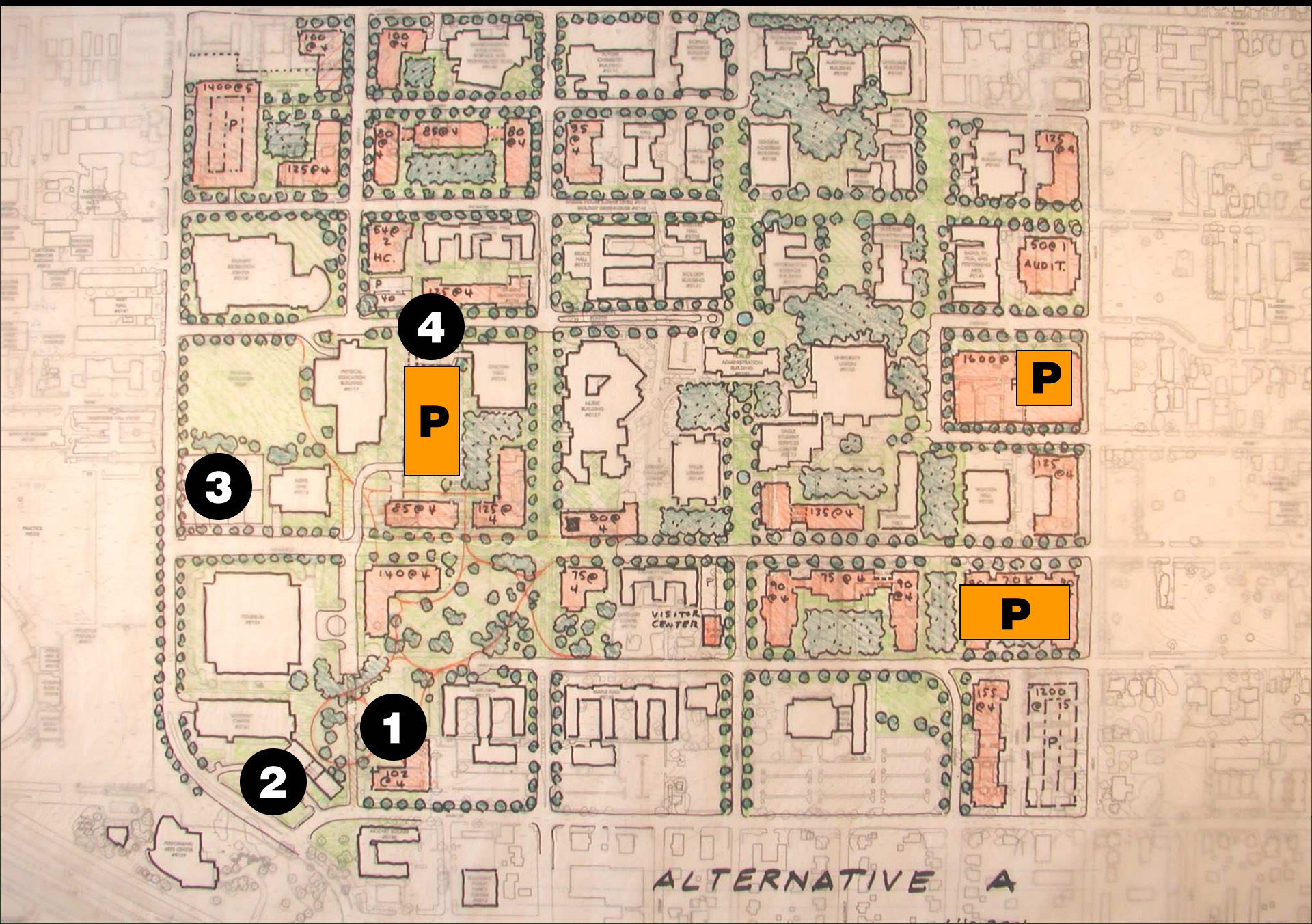


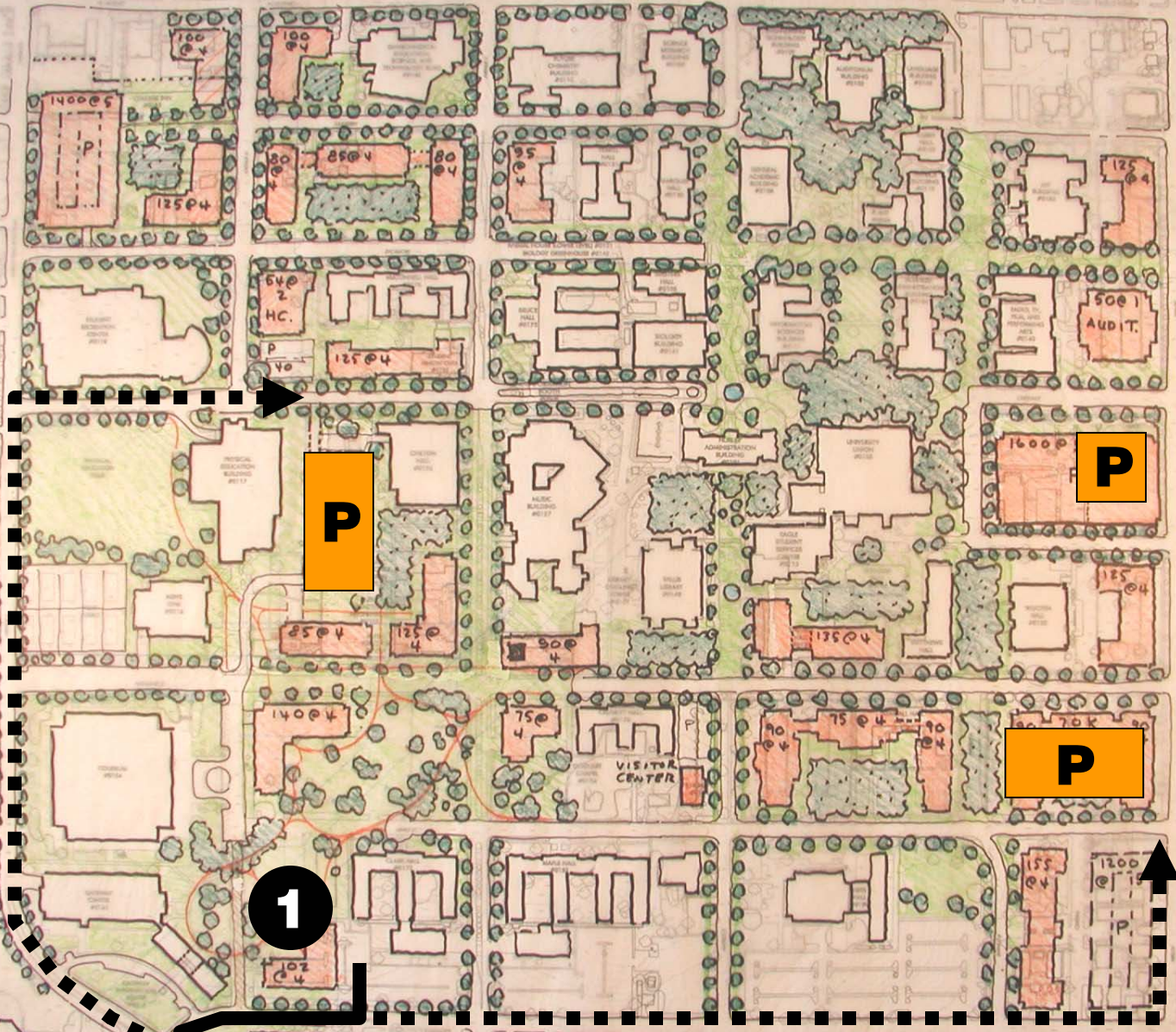
# HOUSING CAPACITY

Possible Location	Capacity
Eagle Point	1,200
Ave D & Sycamore	325
Fouts Field (northeast area)	810
Facilities Area	390
East of Welch	2,300
Campus Core - Alternative C (parking at Fouts)	1,140
<b>Total</b>	<b>6,165</b>

Potential Demand	
45,000 Headcount at 17 %	3,157
45,000 Headcount at 22%	4,745

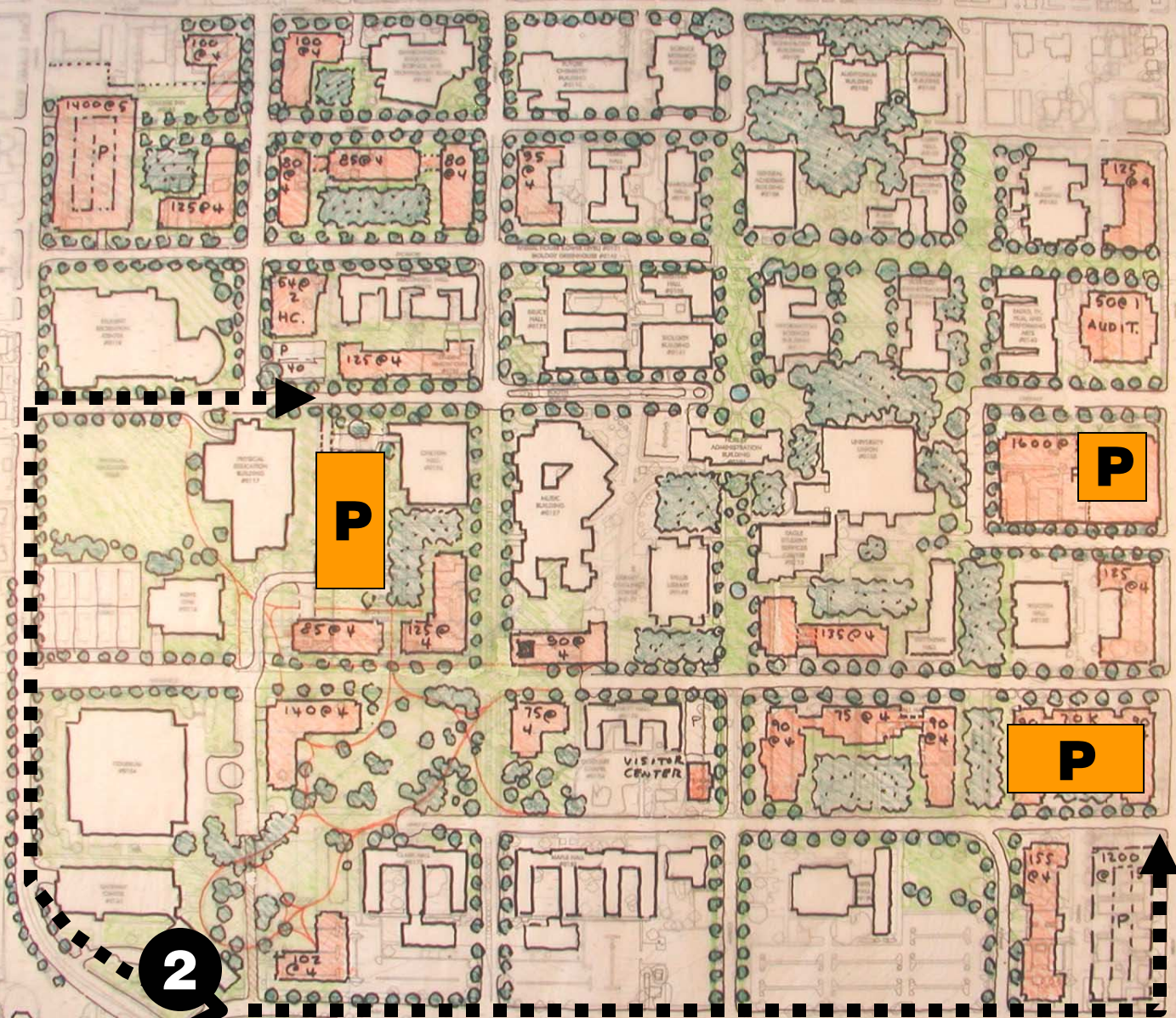
# Alternative A: Visitor Center & Wayfinding





ALTERNATIVE A





ALTERNATIVE A

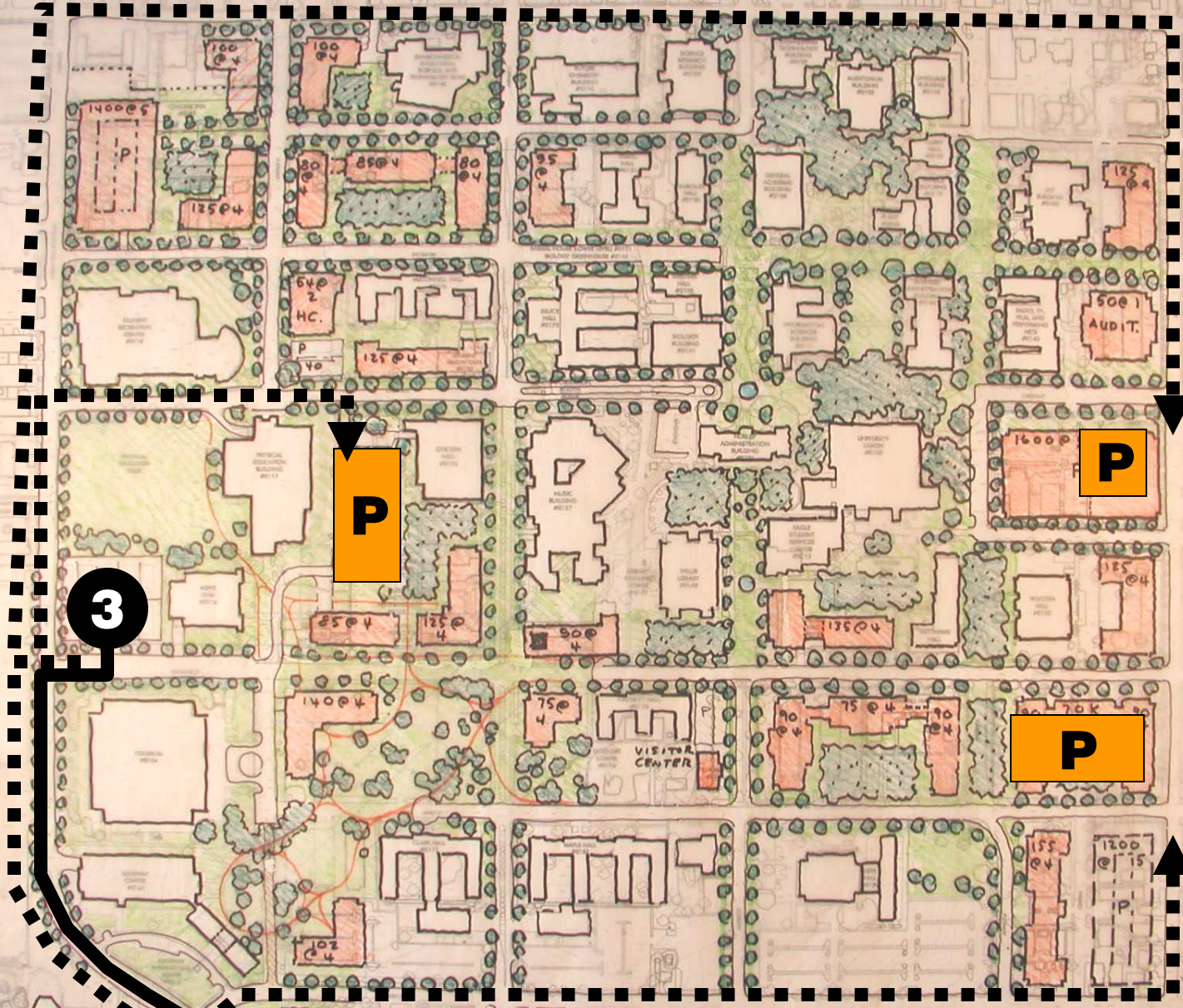
2

P

P

P

P



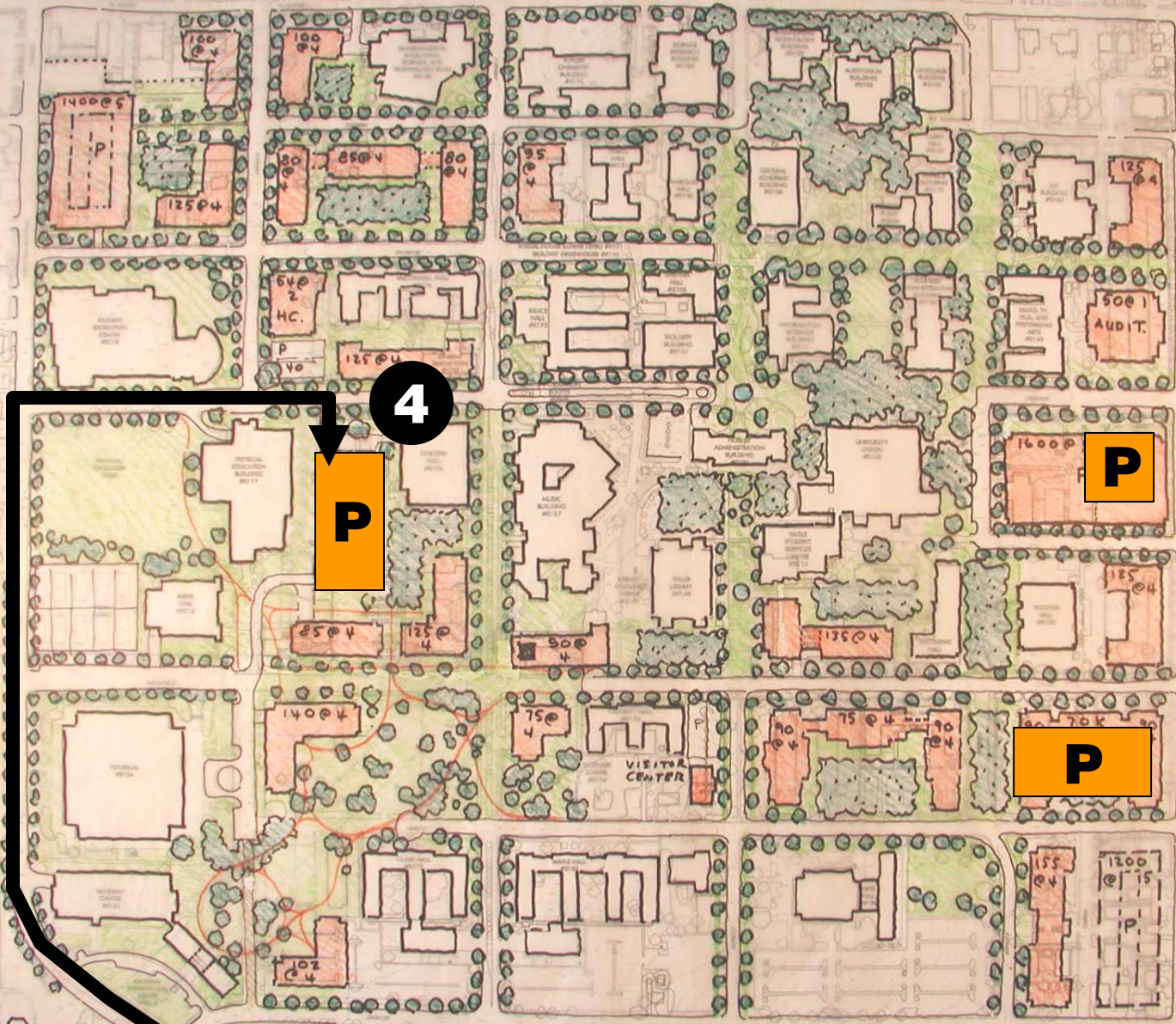
3

P

P

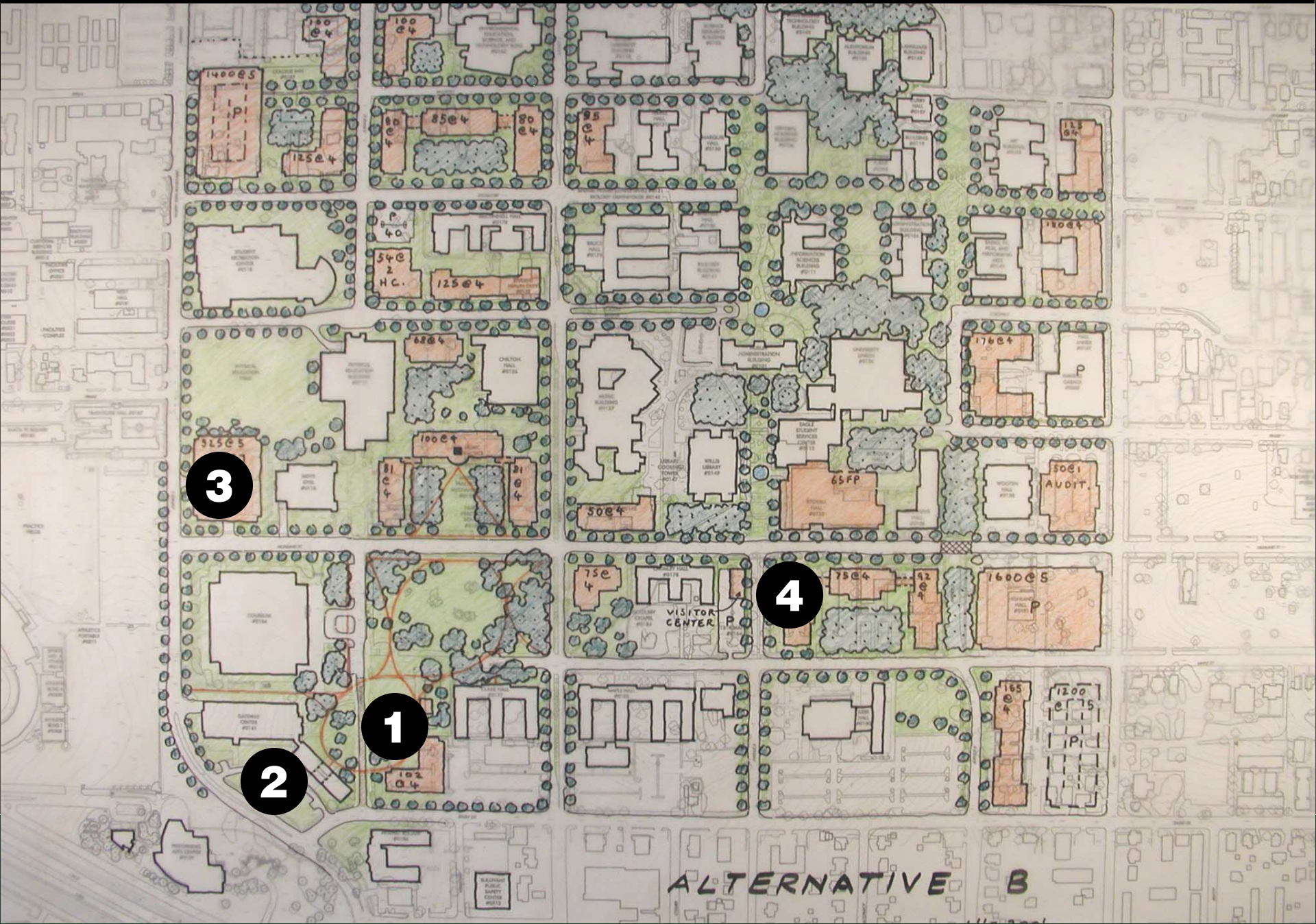
P

ALTERNATIVE A



ALTERNATIVE A

# Alternative B: Visitor Center & Wayfinding



3

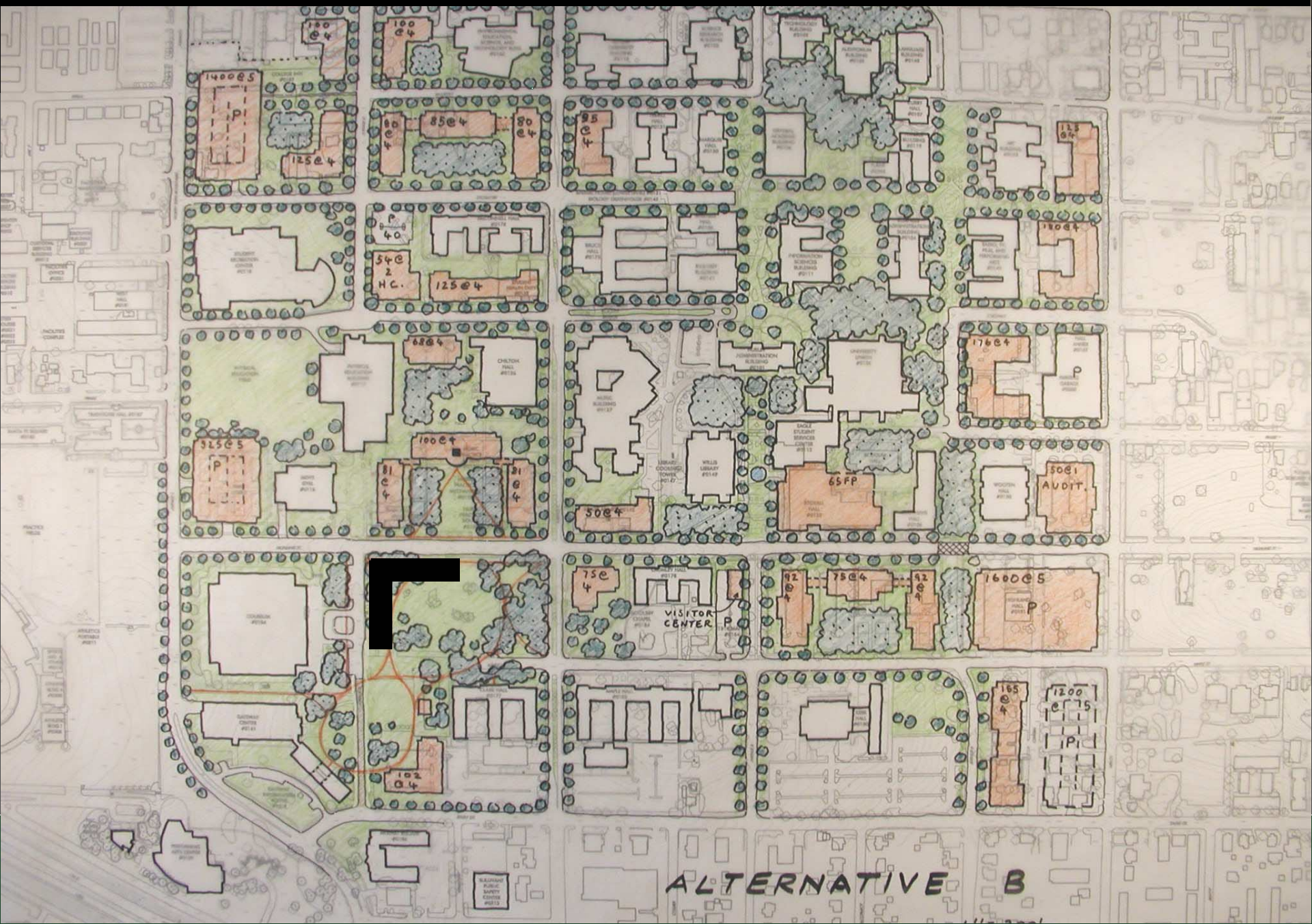
4

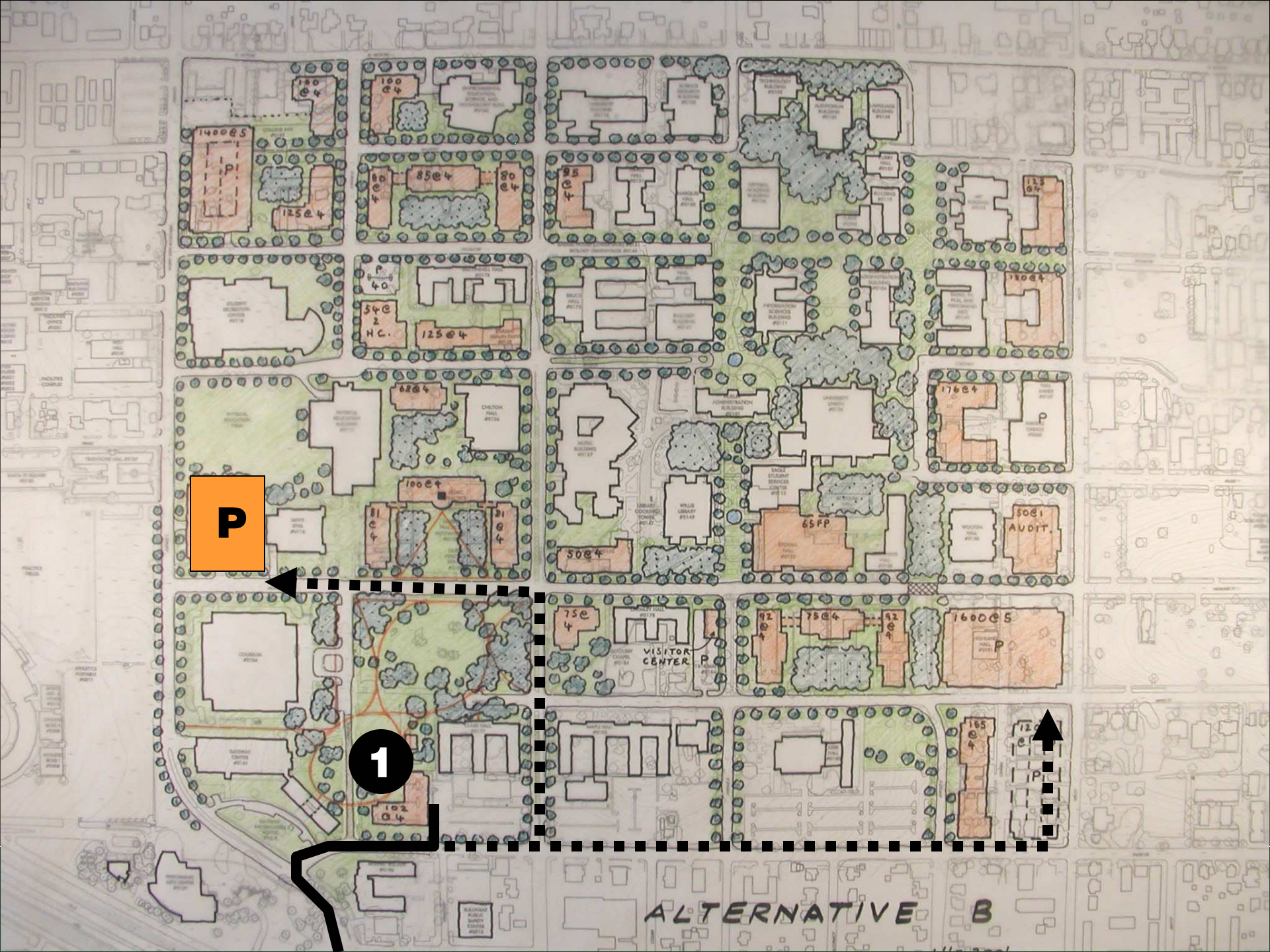
1

2

ALTERNATIVE B

# Alternative B: Visitor Center & Wayfinding

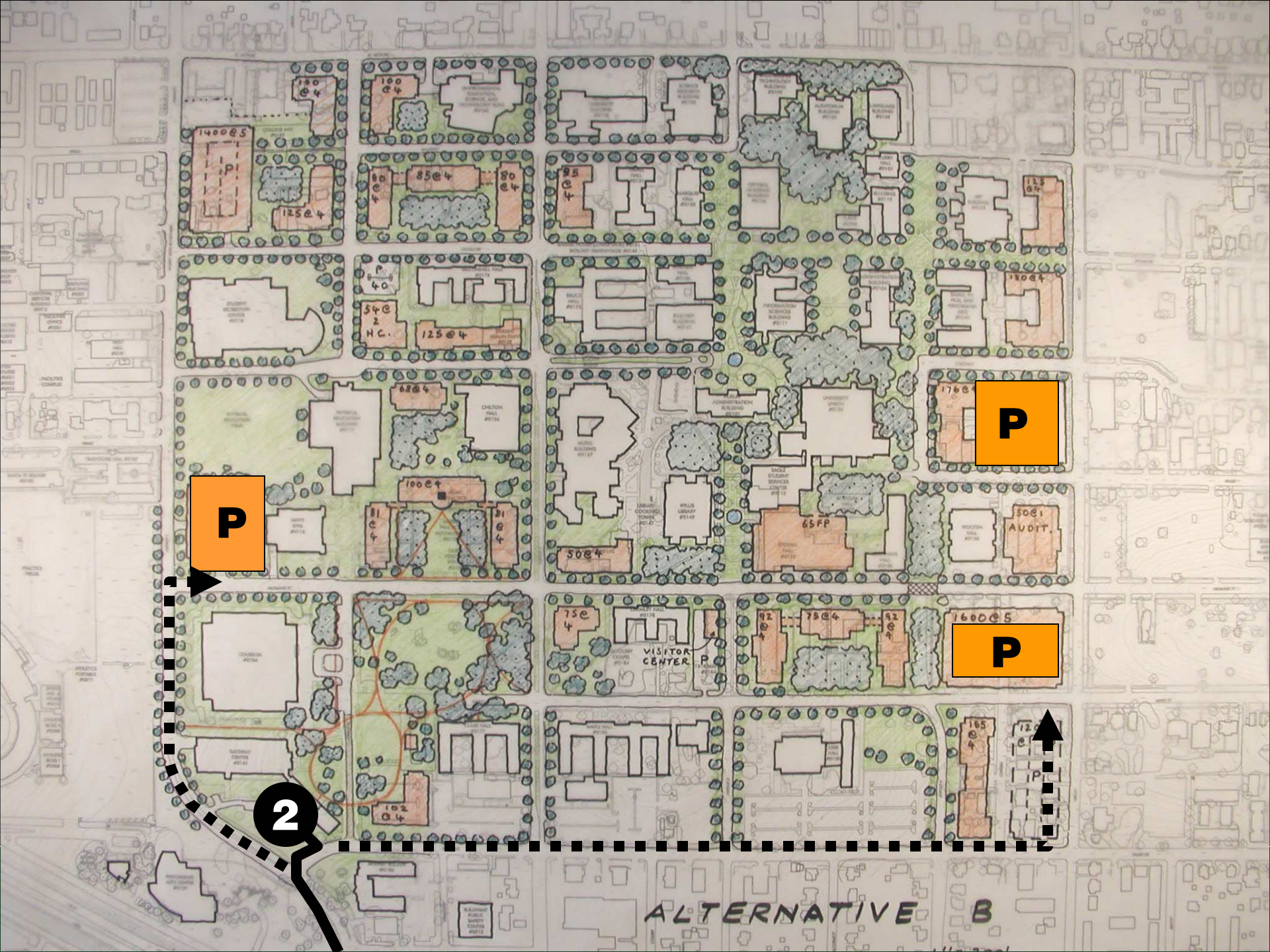




P

1

ALTERNATIVE B



1400@5

100@4

100@4

85@4

80@4

95@4

125@4

170@4

125@4

170@4

176@4

50@4

54@2 H.C.

68@4

100@4

50@4

65FP

50@4

75@4

VISITOR CENTER

75@4

92@4

1600@5

102@4

165@4

125@4

125@4

165@4

125@4

125@4

125@4

125@4

125@4

125@4

125@4

125@4

125@4

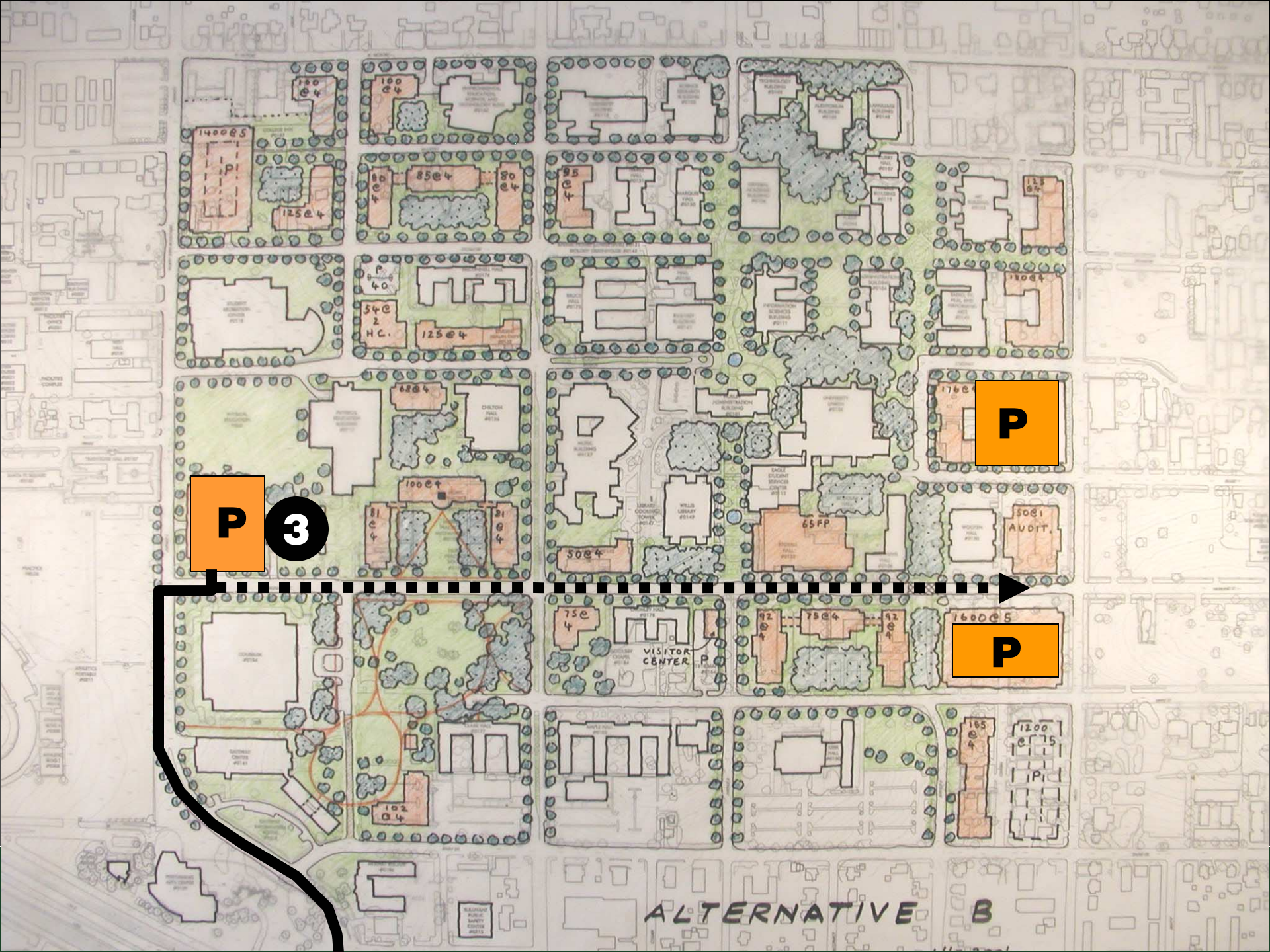
2

P

P

P

ALTERNATIVE B



**P**

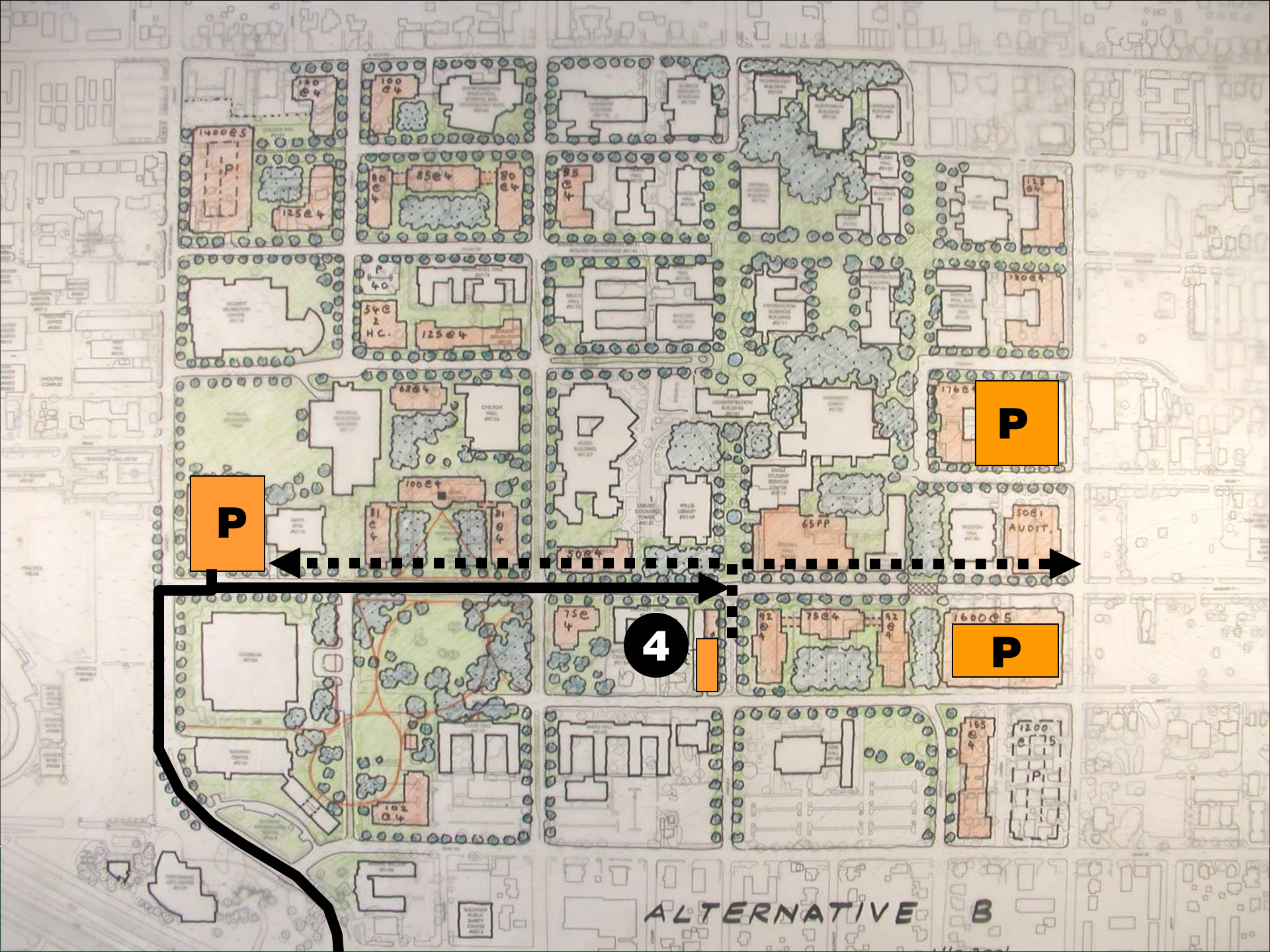
**3**

**P**

**P**

**ALTERNATIVE B**





P

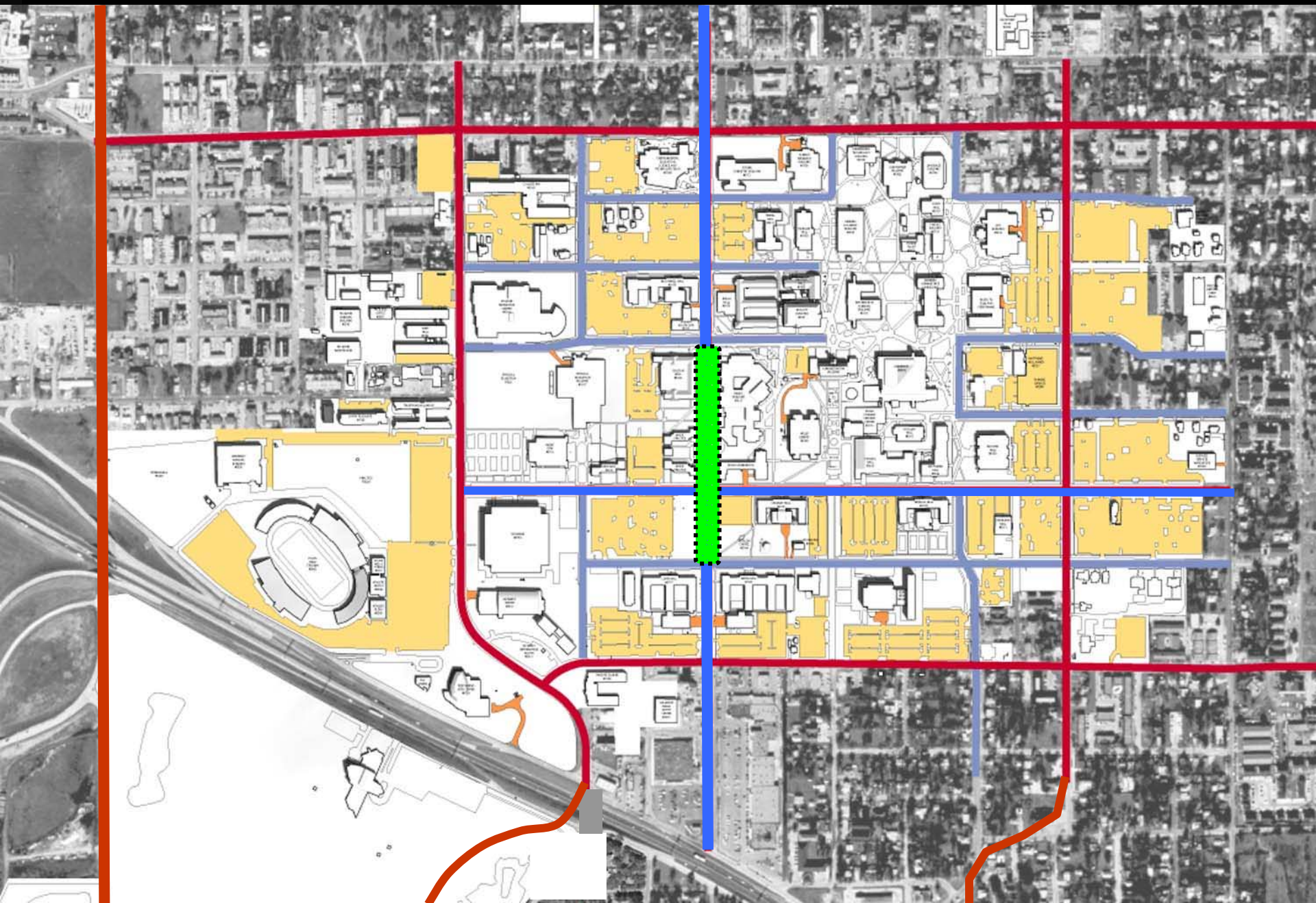
P

P

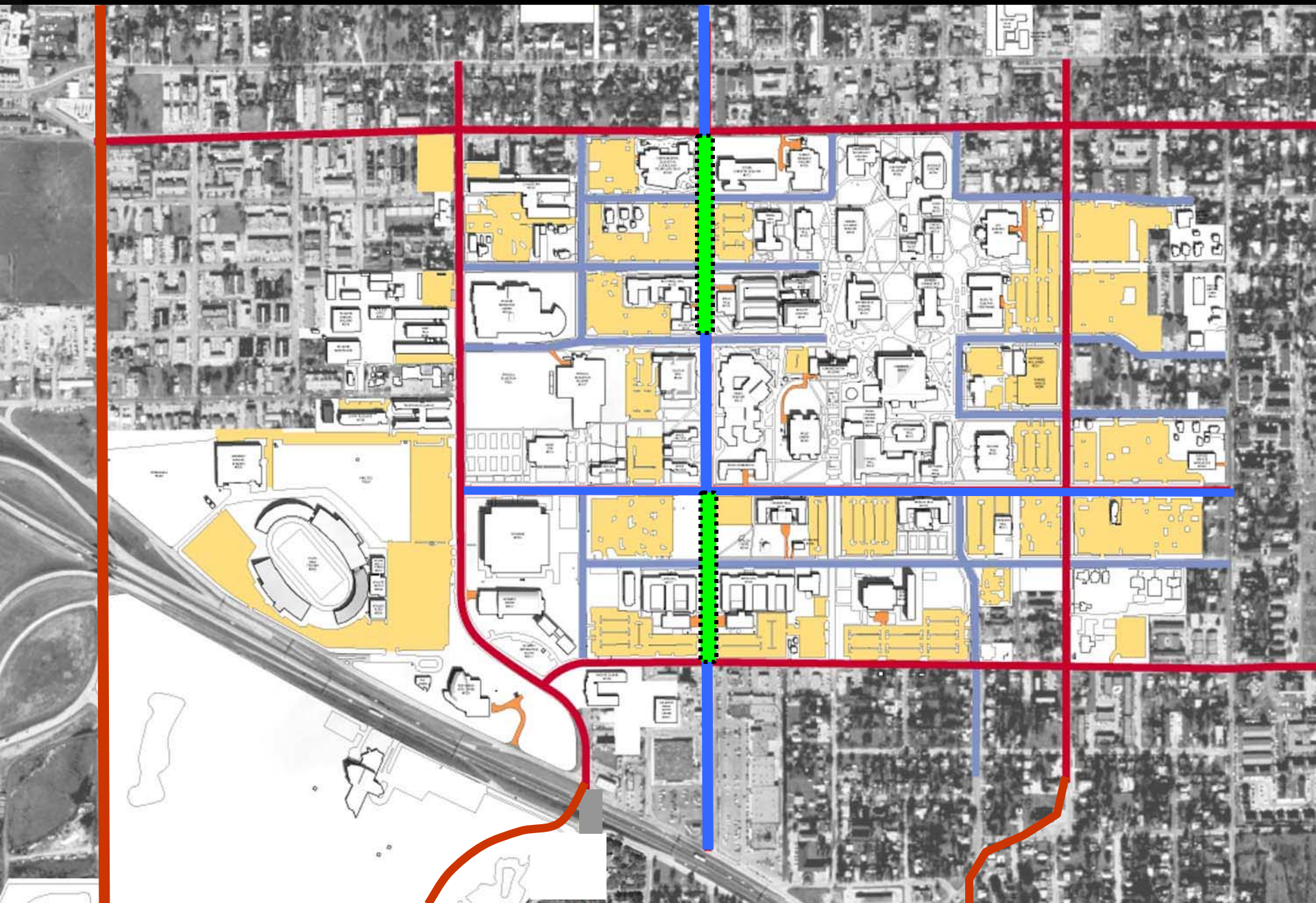
4

ALTERNATIVE B

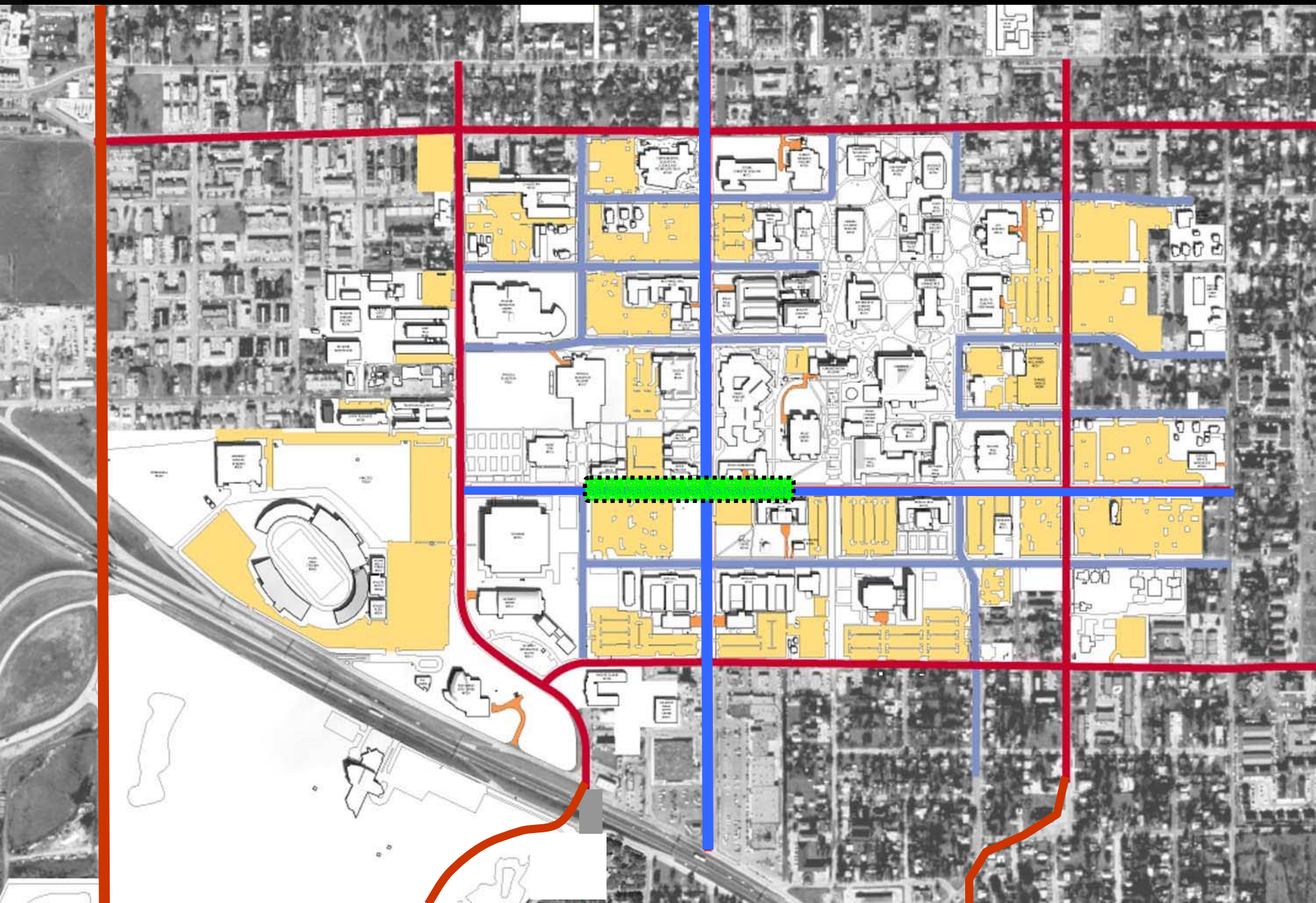
# CIRCULATION



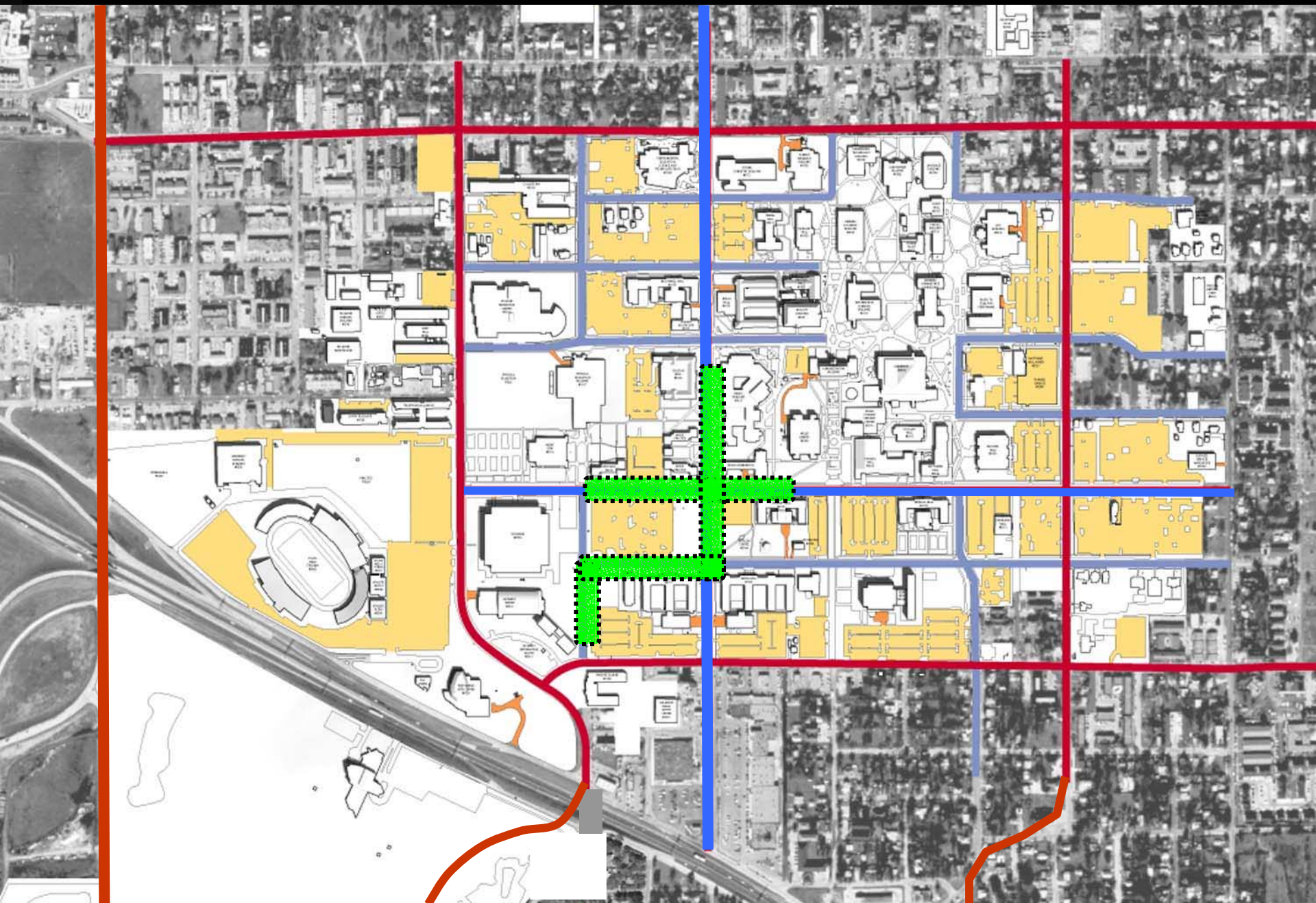
# CIRCULATION



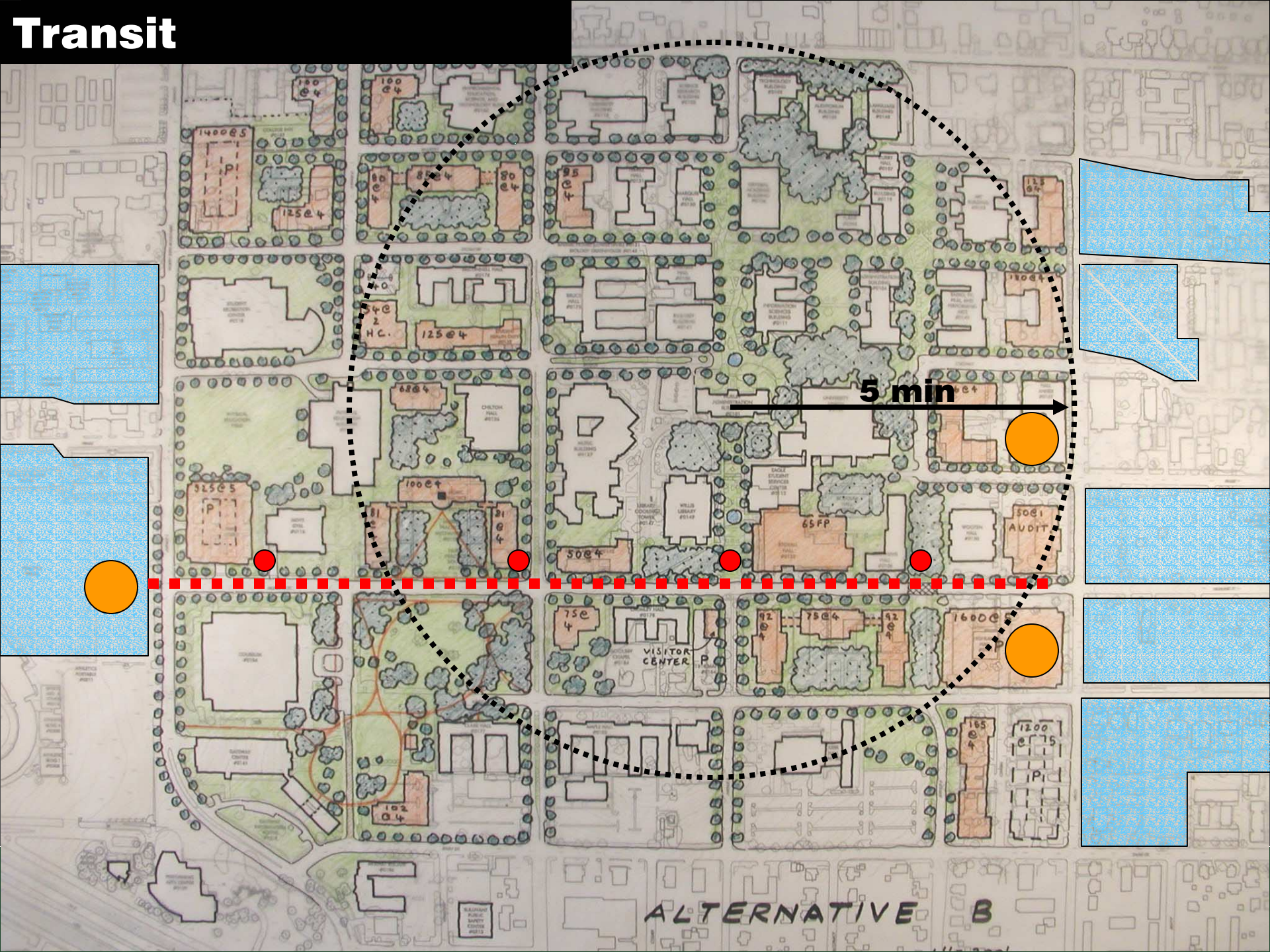
# CIRCULATION



# CIRCULATION



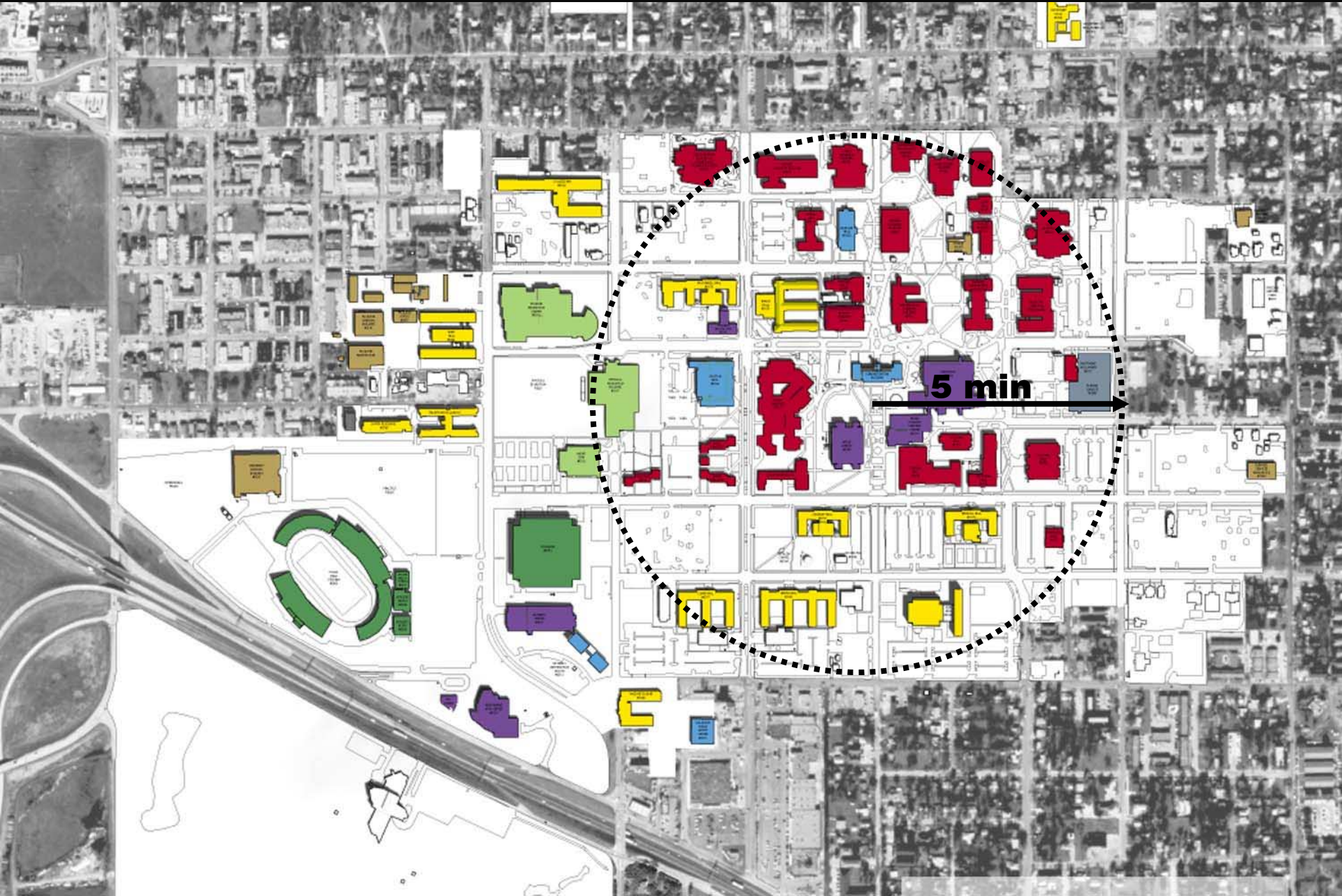
# Transit

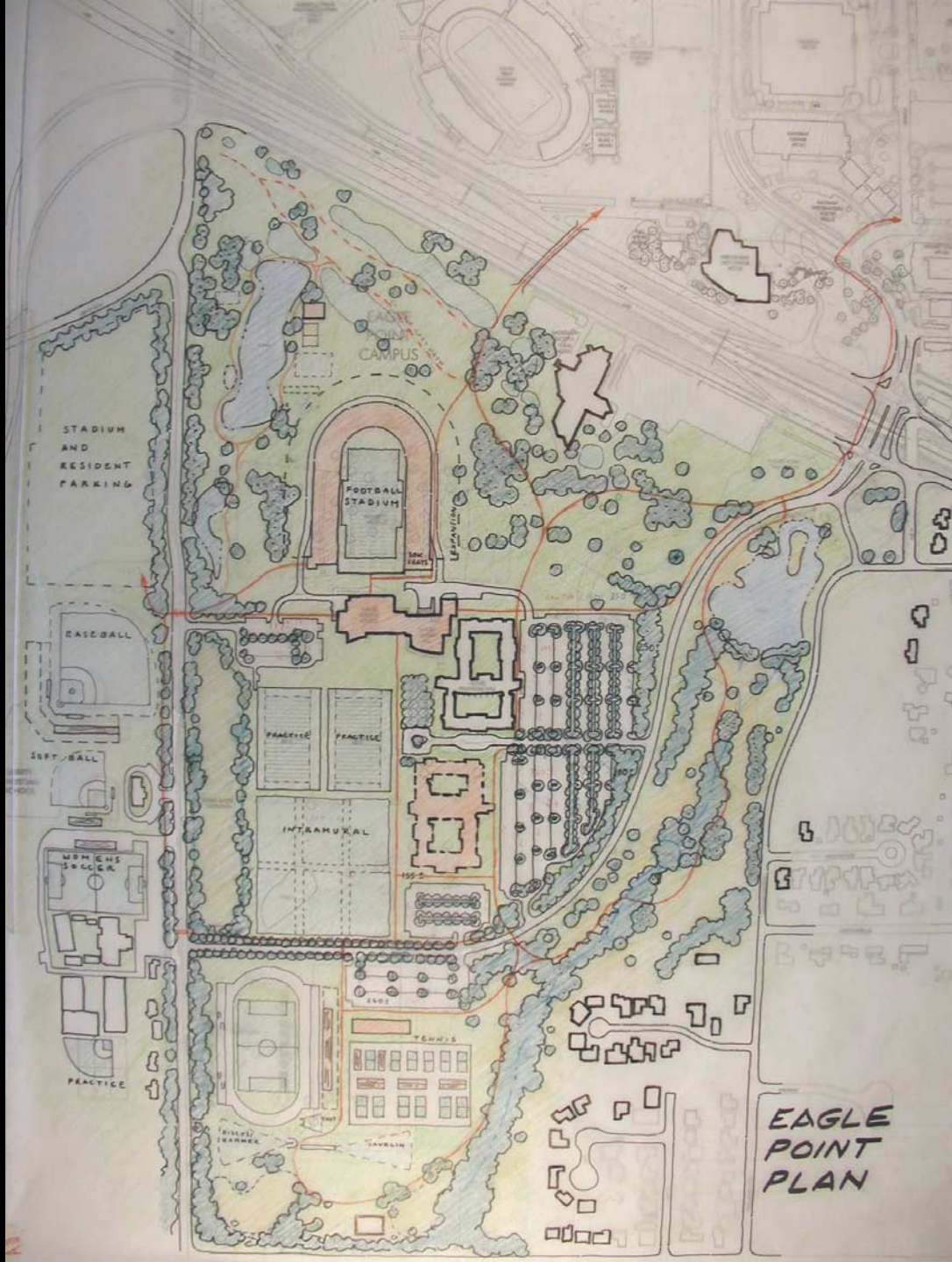


5 min

ALTERNATIVE B

# LAND USE





**EAGLE  
POINT  
PLAN**