



# UNIVERSITY OF NORTH TEXAS

**Work Session 5**

**October 19 & 20, 2004**

# A G E N D A

## 1. Land use pattern

## 2. Housing

- Total resident population
- Mix of types and residents

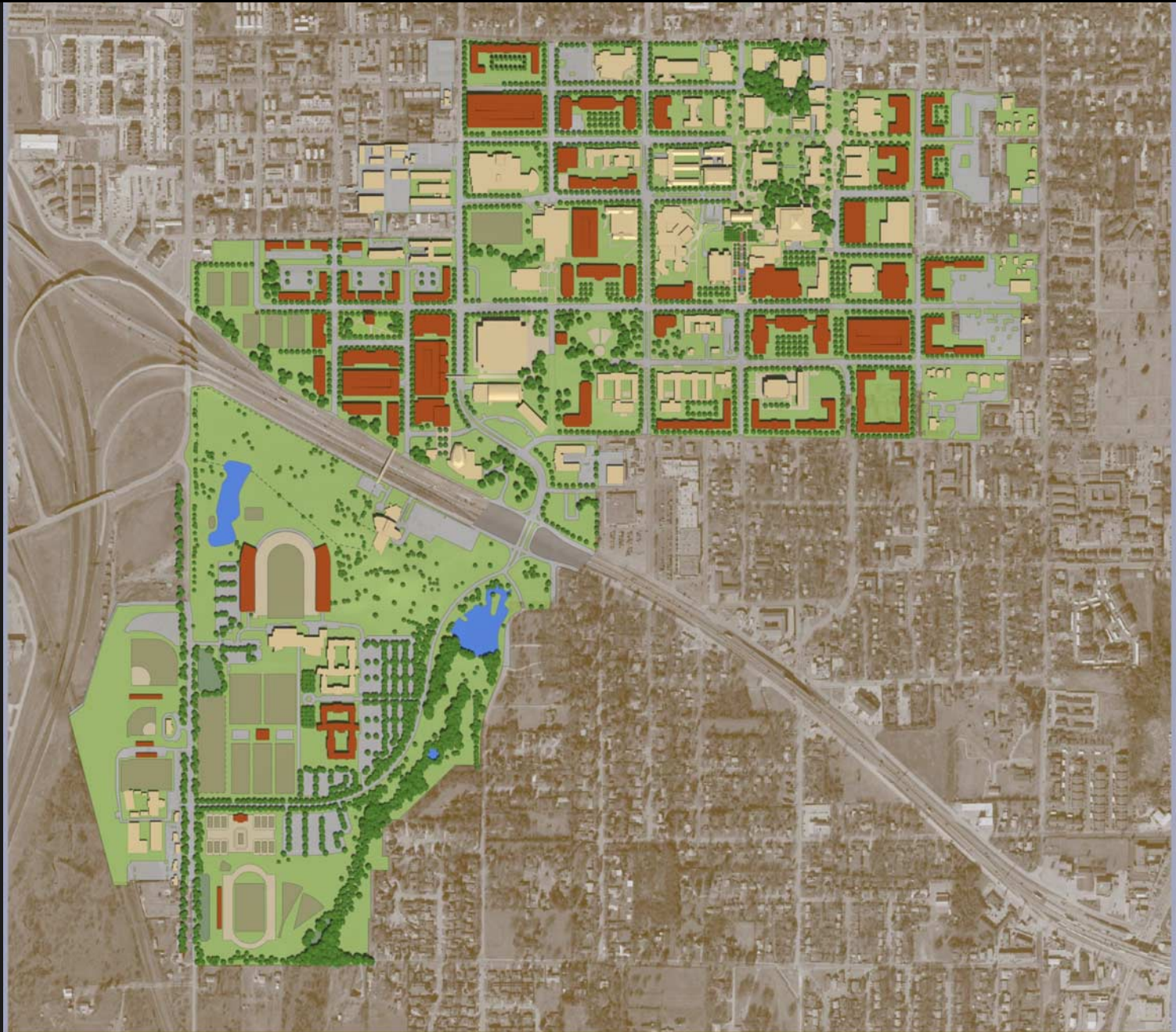
## 3. Circulation

- Street closures
- Bike routes

## 4. Parking

## 5. Design Guidelines

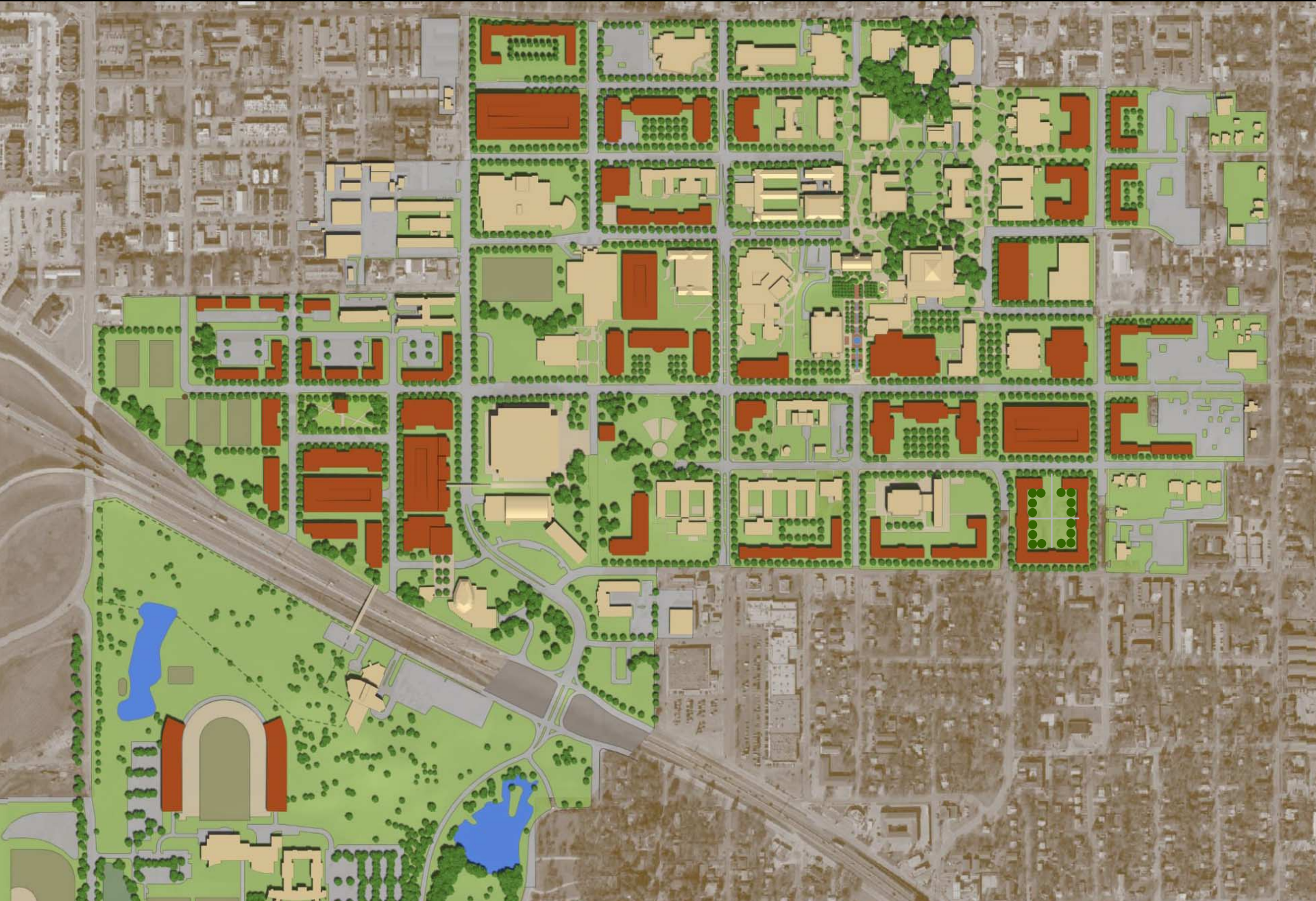
# PREFERRED ALTERNATIVE - AUGUST 2004



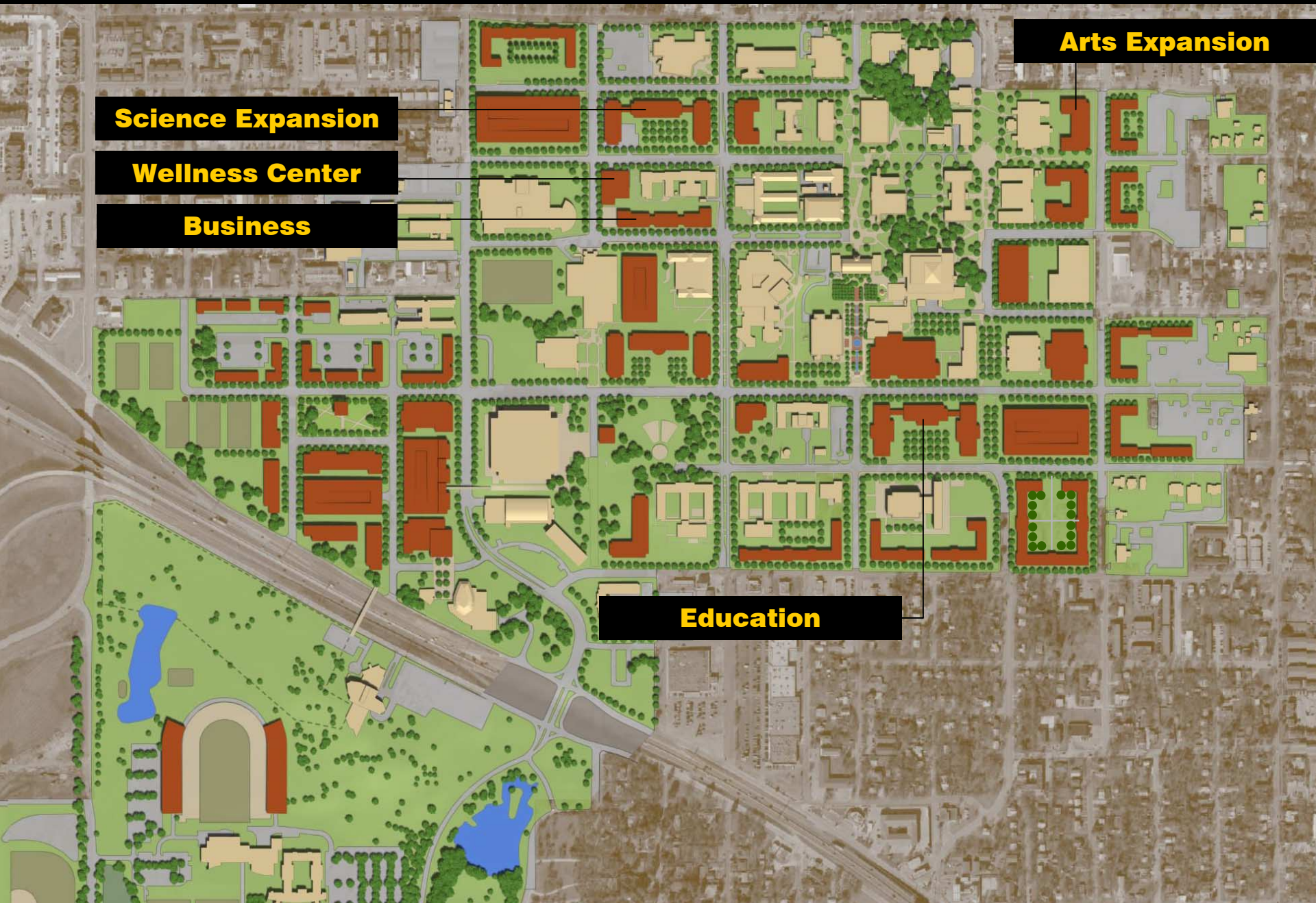
# EAGLE POINT CAMPUS



# PREFERRED ALTERNATIVE - AUGUST 2004



# EDUCATIONAL & GENERAL SPACE



**Arts Expansion**

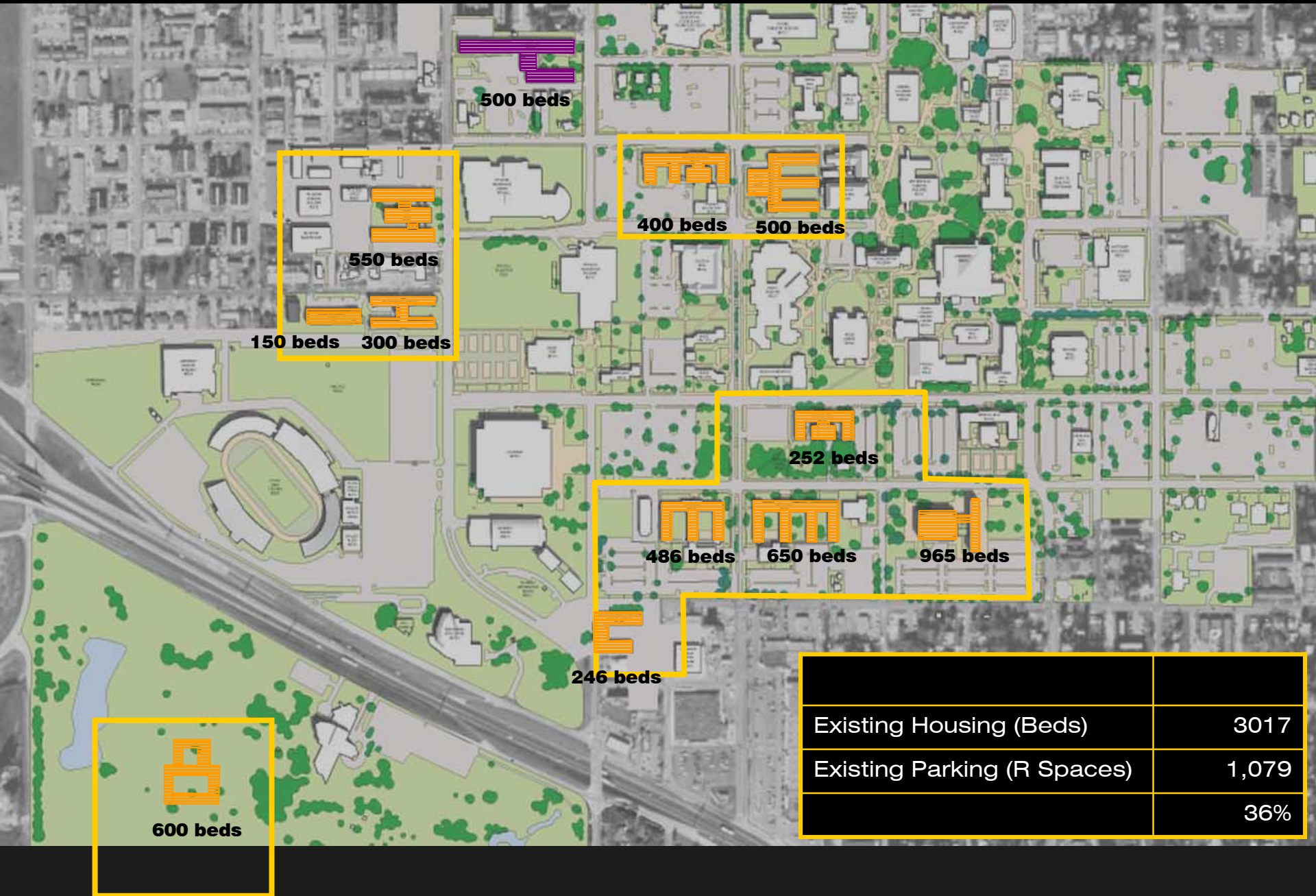
**Science Expansion**

**Wellness Center**

**Business**

**Education**

# EXISTING HOUSING



# HOUSING

## Housing for 41,000

### SCENARIO 1:

#### Existing Occupancy Rates

	%	New Beds
Freshman	65%	1,110
Sophomores	21%	389
Juniors	9%	164
Seniors	4%	138
Sub-total	22%	1,801
Graduates	1%	53
<b>Total</b>	<b>17%</b>	<b>1,854</b>

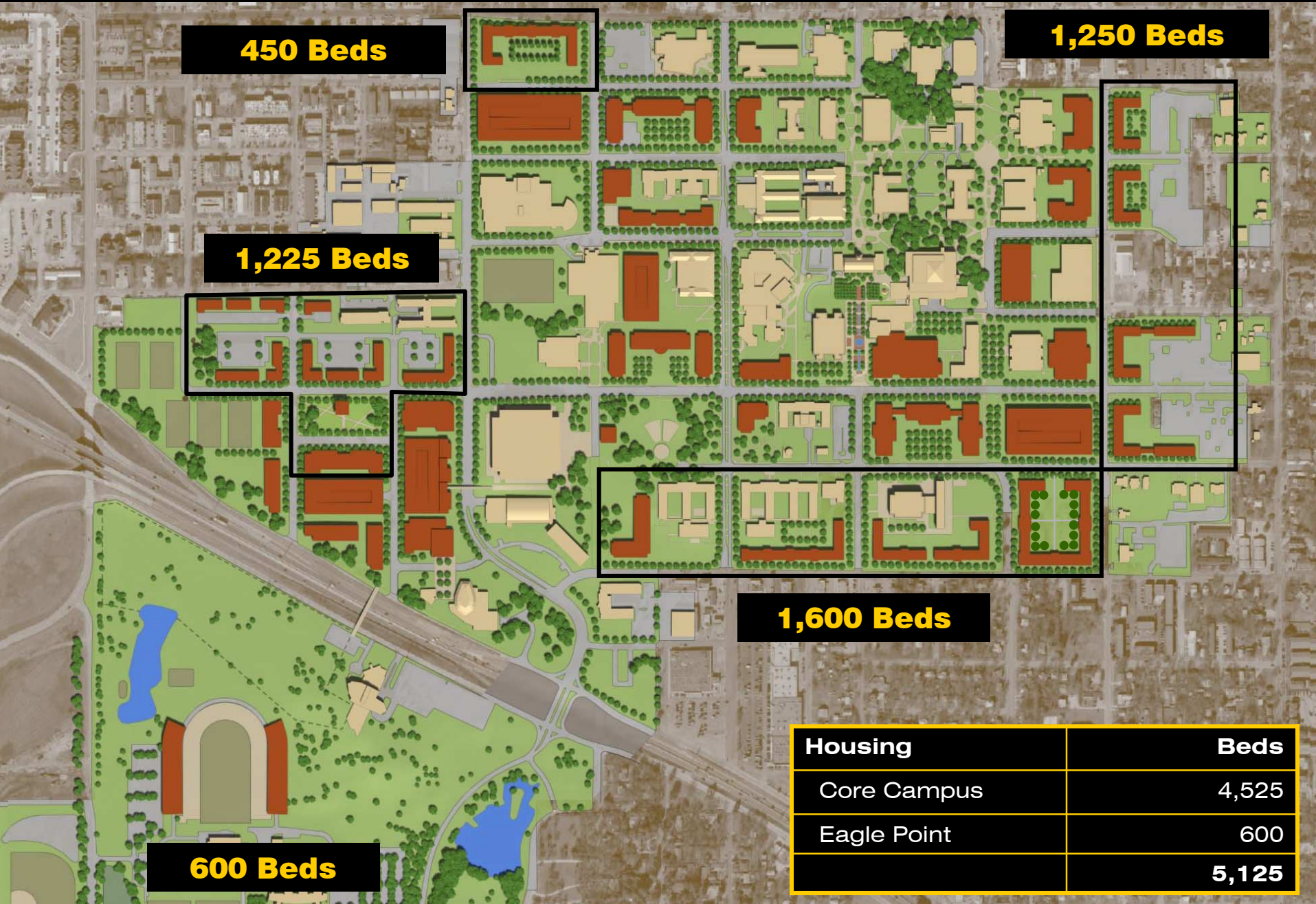
### SCENARIO 2:

#### Increase Upper Division / Graduates

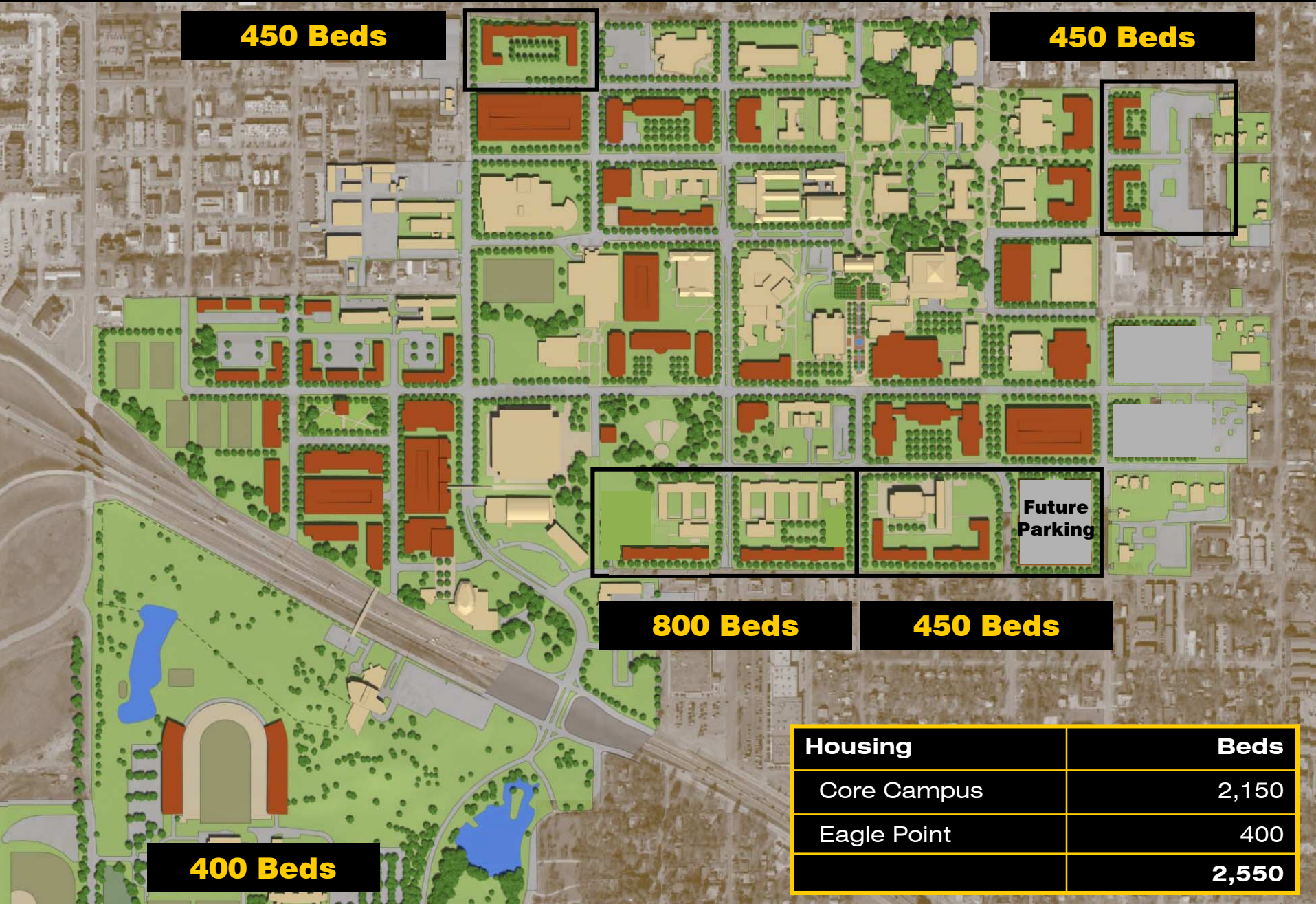
	%	New Beds
Freshman	65%	1,110
Sophomores	25%	657
Juniors	10%	239
Seniors	5%	339
Sub-total	23%	2,244
Graduates	5%	514
<b>Total</b>	<b>19%</b>	<b>2,759</b>



# HOUSING SITES

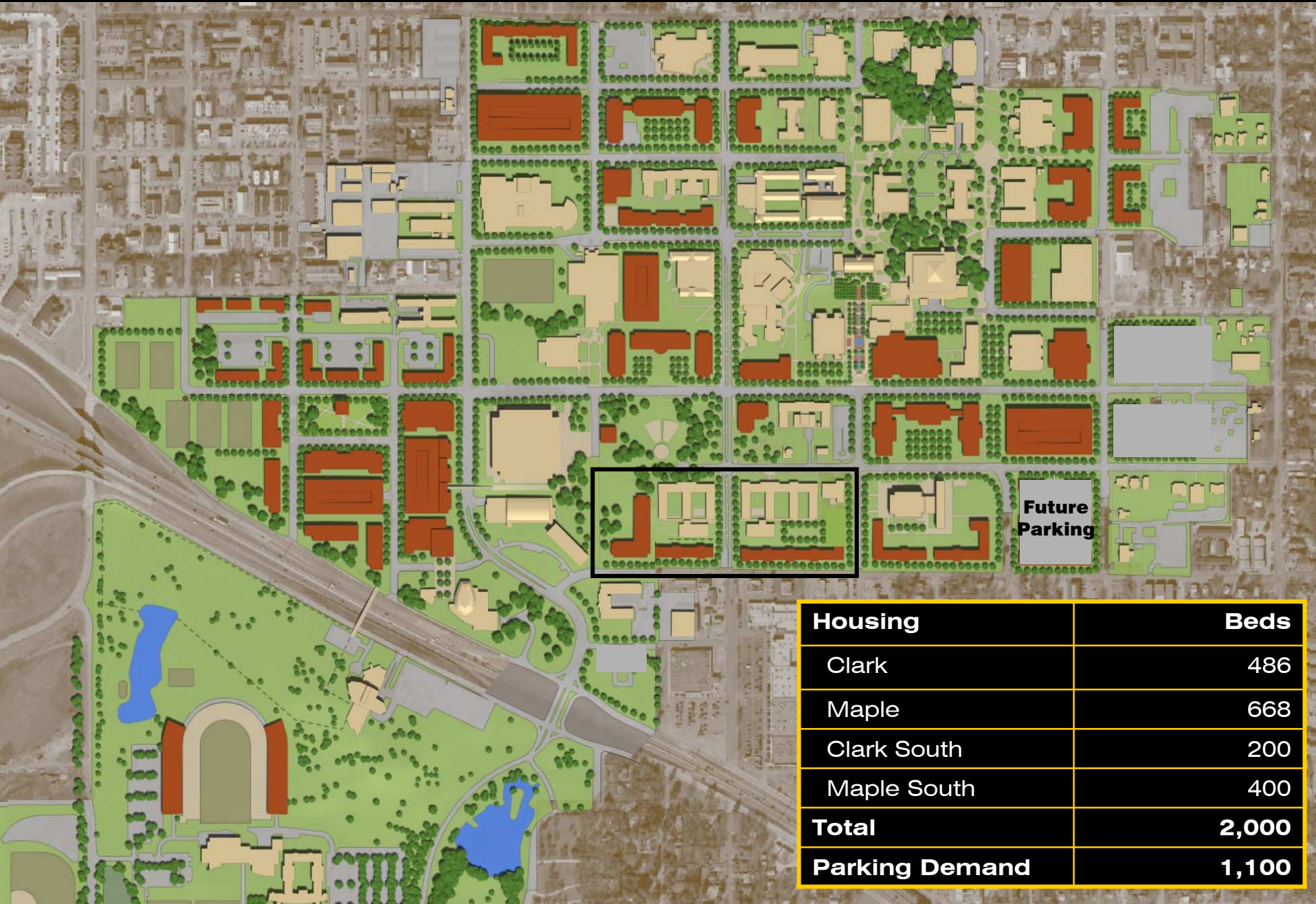


# HOUSING SITES



Housing	Beds
Core Campus	2,150
Eagle Point	400
	<b>2,550</b>

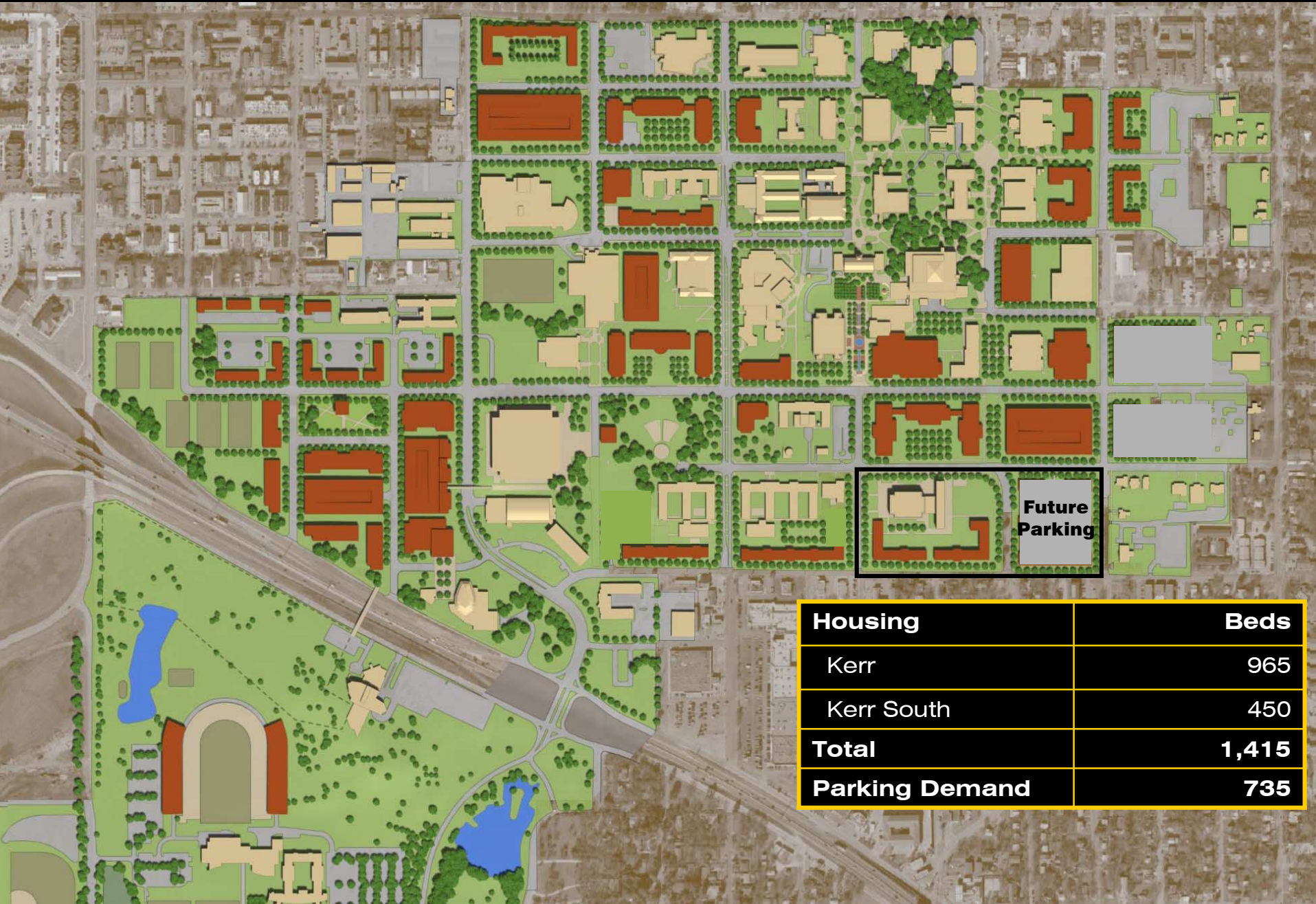
# HOUSING SITES



**Future  
Parking**

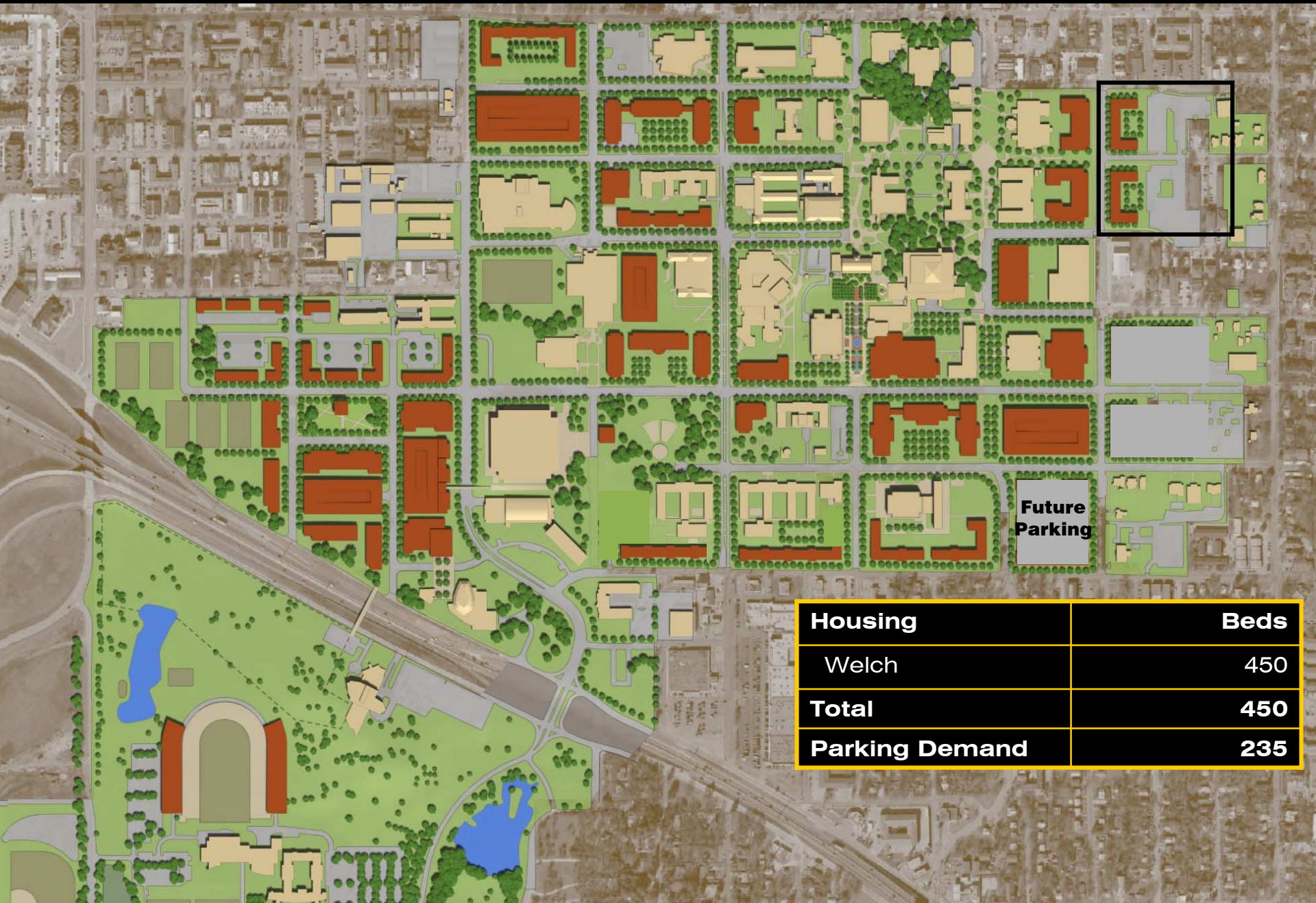
<b>Housing</b>	<b>Beds</b>
Clark	486
Maple	668
Clark South	200
Maple South	400
<b>Total</b>	<b>2,000</b>
<b>Parking Demand</b>	<b>1,100</b>

# HOUSING SITES



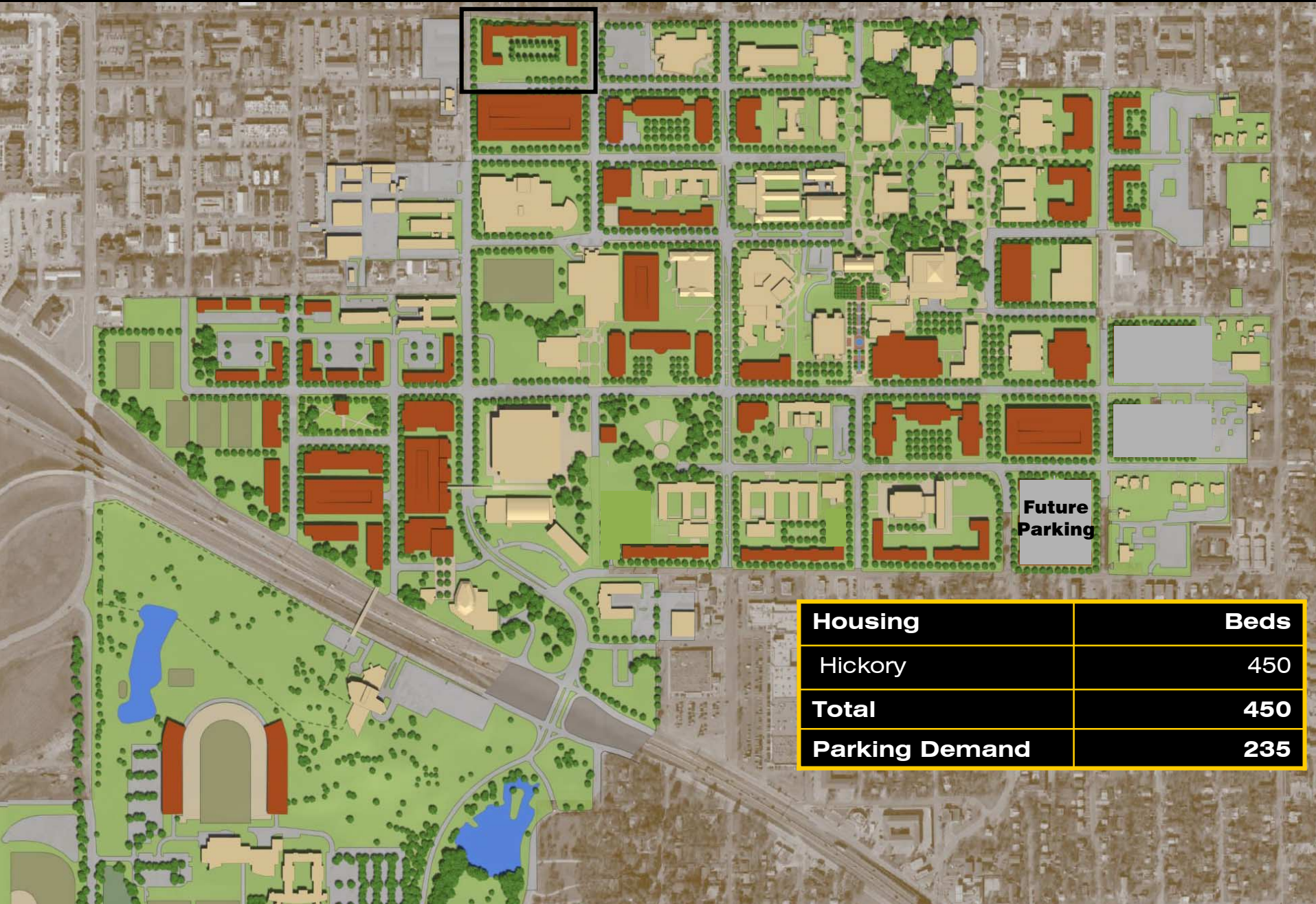
Housing	Beds
Kerr	965
Kerr South	450
<b>Total</b>	<b>1,415</b>
<b>Parking Demand</b>	<b>735</b>

# HOUSING SITES



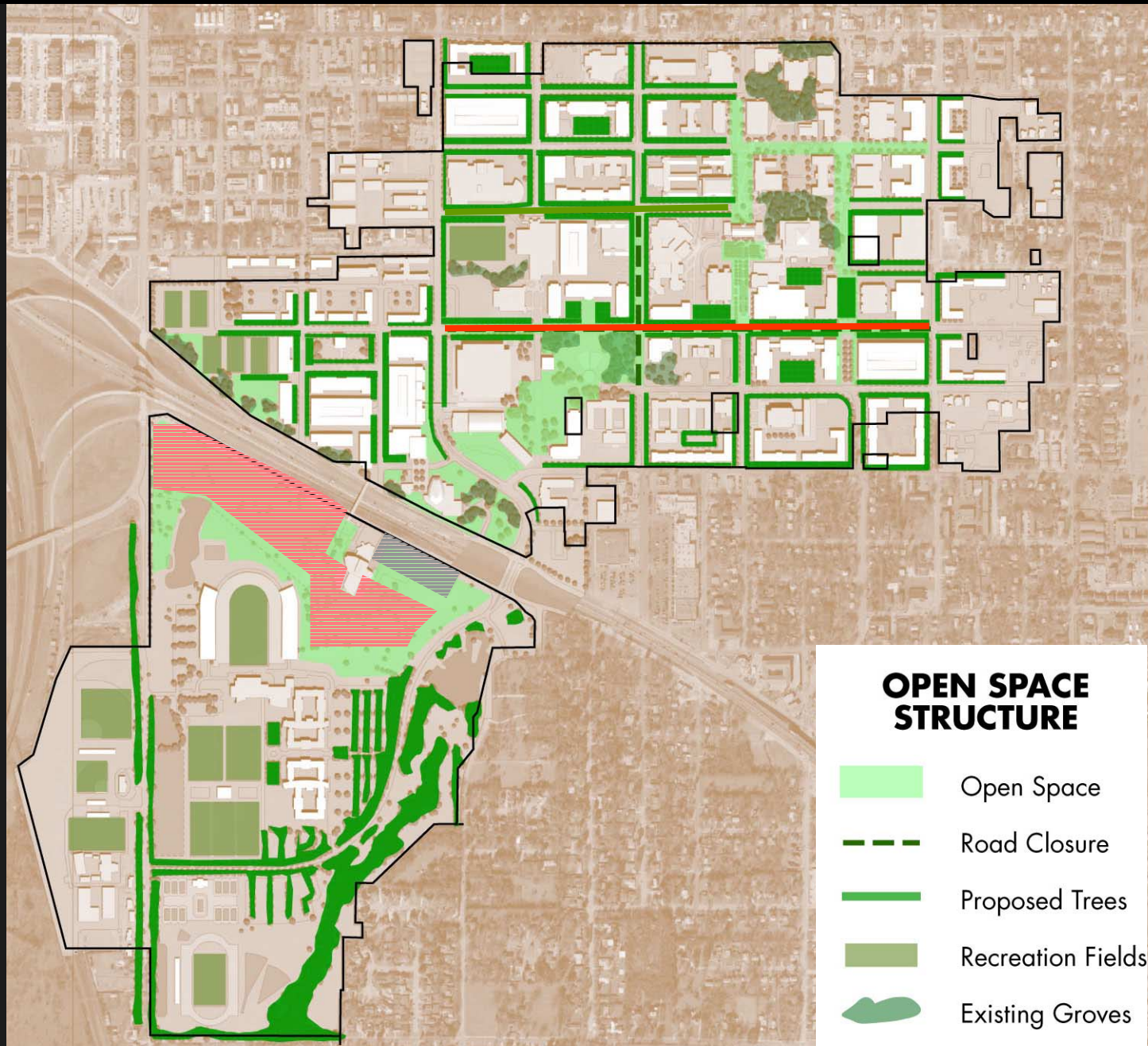
Housing	Beds
Welch	450
<b>Total</b>	<b>450</b>
<b>Parking Demand</b>	<b>235</b>

# HOUSING SITES

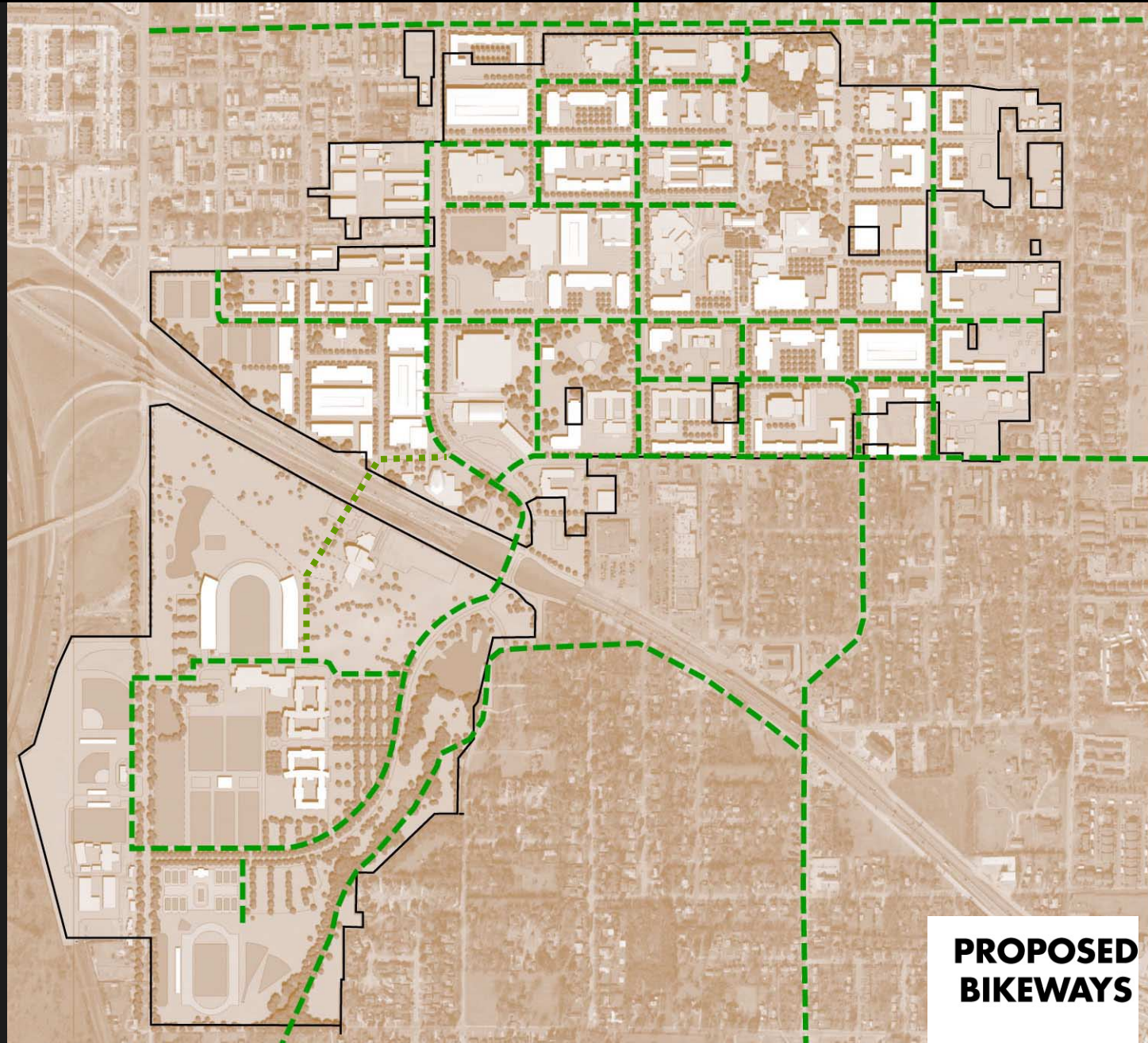


Housing	Beds
Hickory	450
<b>Total</b>	<b>450</b>
<b>Parking Demand</b>	<b>235</b>

# OPEN SPACE STRUCTURE



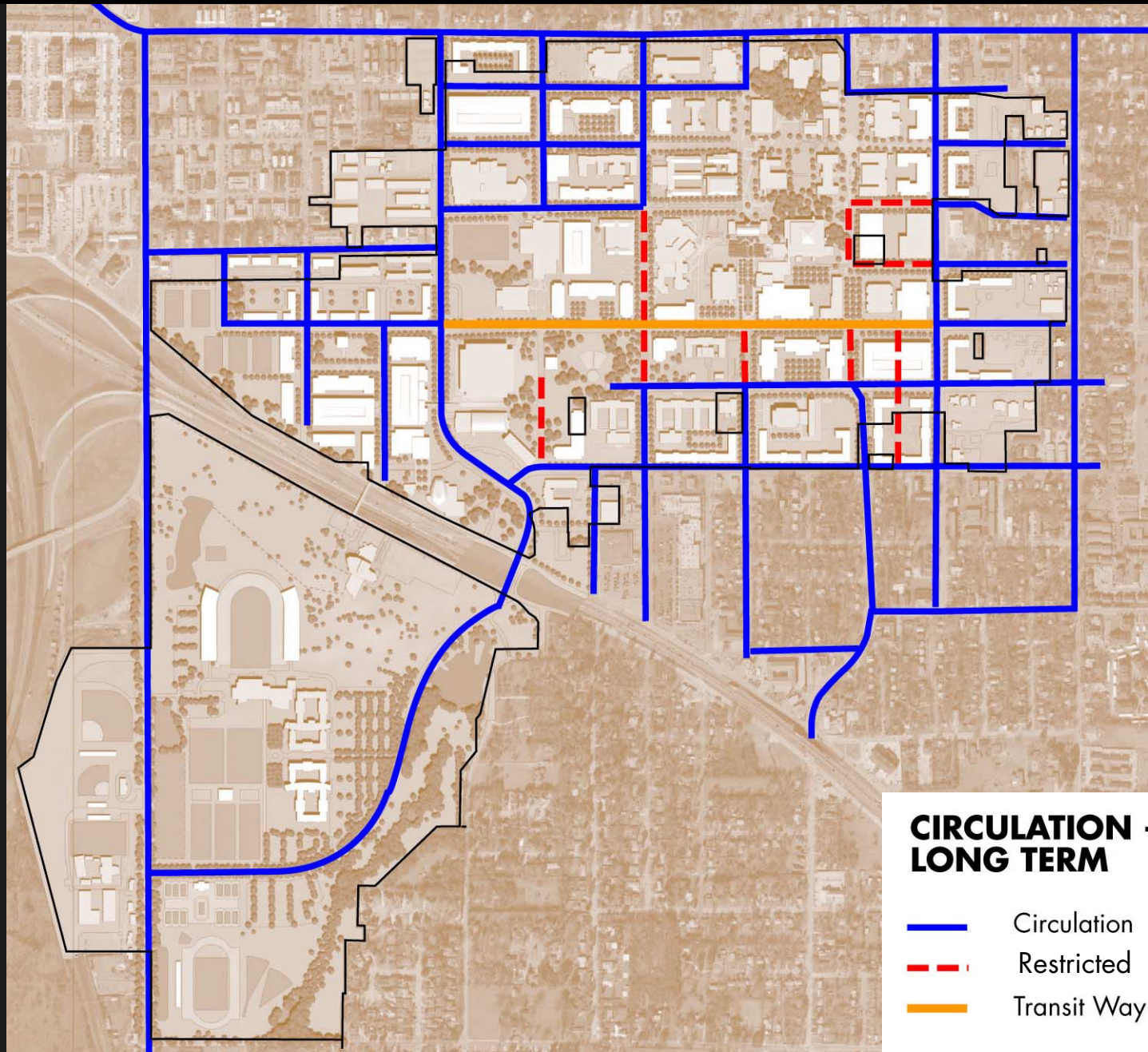
# BIKE ROUTES






**PROPOSED  
BIKEWAYS**



# CIRCULATION



## CIRCULATION - LONG TERM

-  Circulation
-  Restricted
-  Transit Way

# PREFERRED ALTERNATIVE - Transit & Circulation



**Transit Hub**

**Transit Hub**

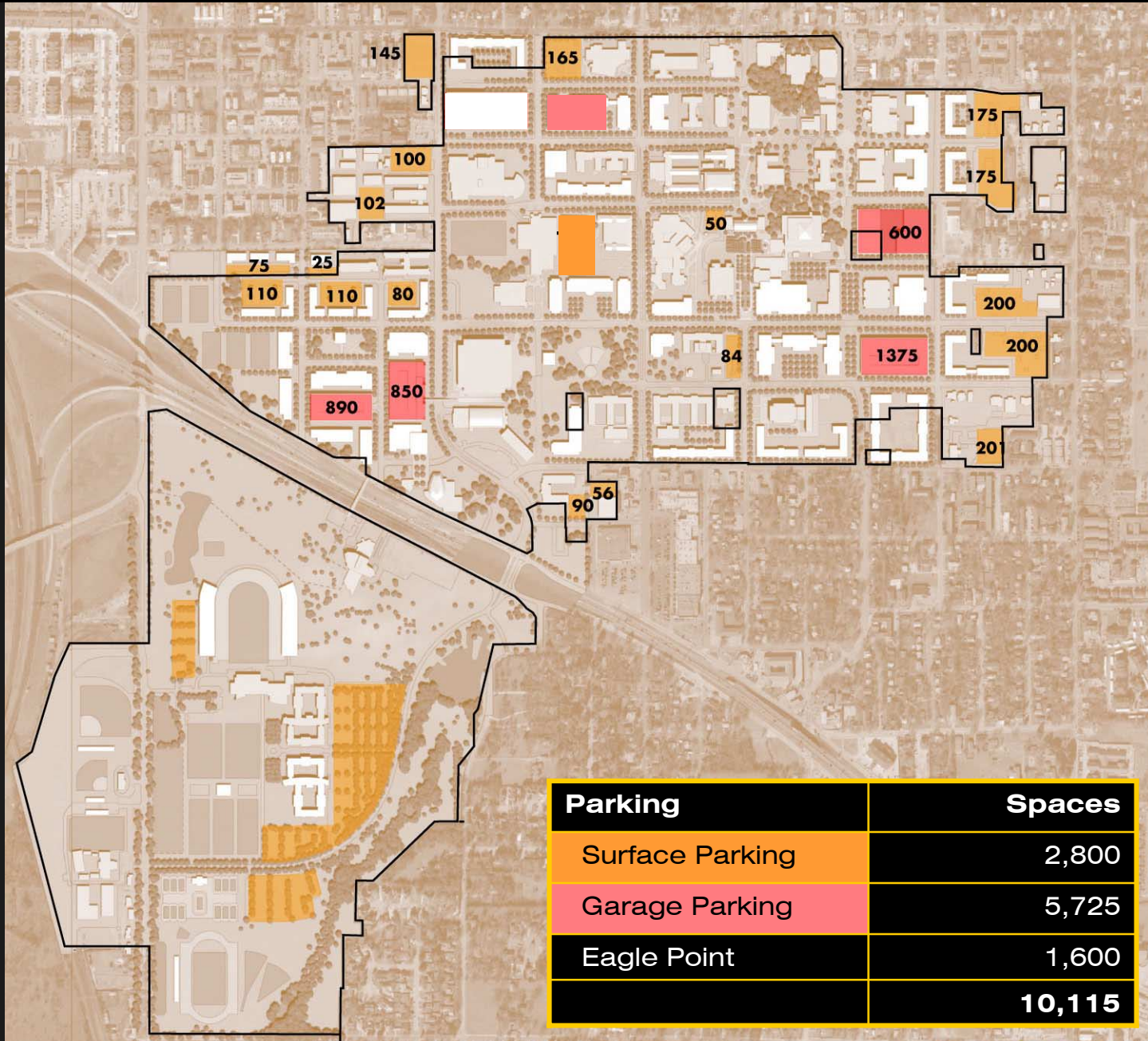
**Operational Closure of Ave. C**

**Recreation Fields**

**Highland Transit Way**

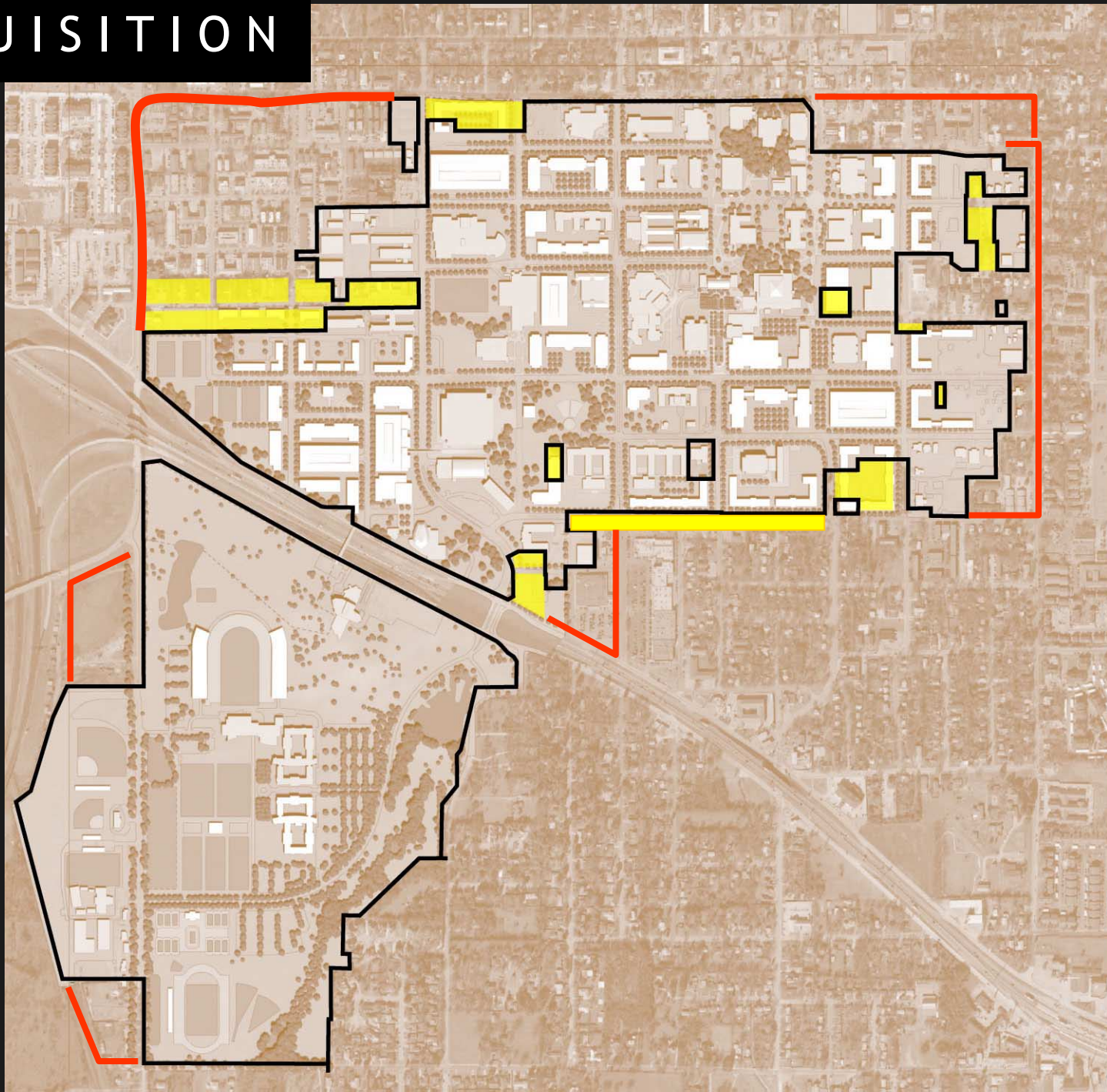
**Transit Hub**

# PARKING



Parking	Spaces
Surface Parking	2,800
Garage Parking	5,725
Eagle Point	1,600
<b>Total</b>	<b>10,115</b>

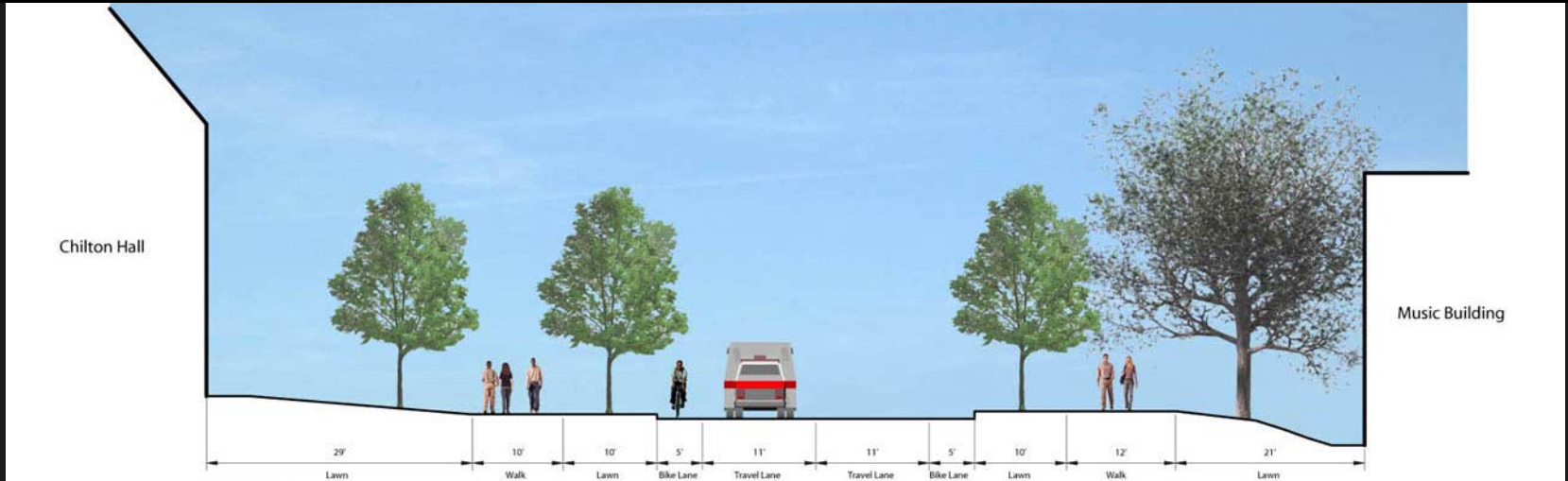
# ACQUISITION



# AVENUE C - EXISTING CONDITIONS



# AVENUE C



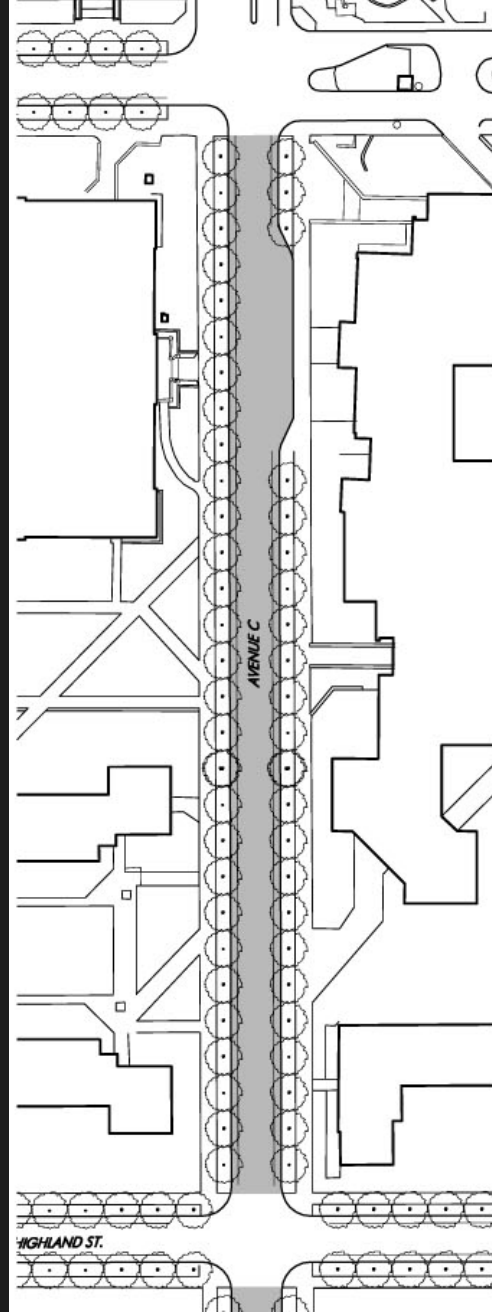
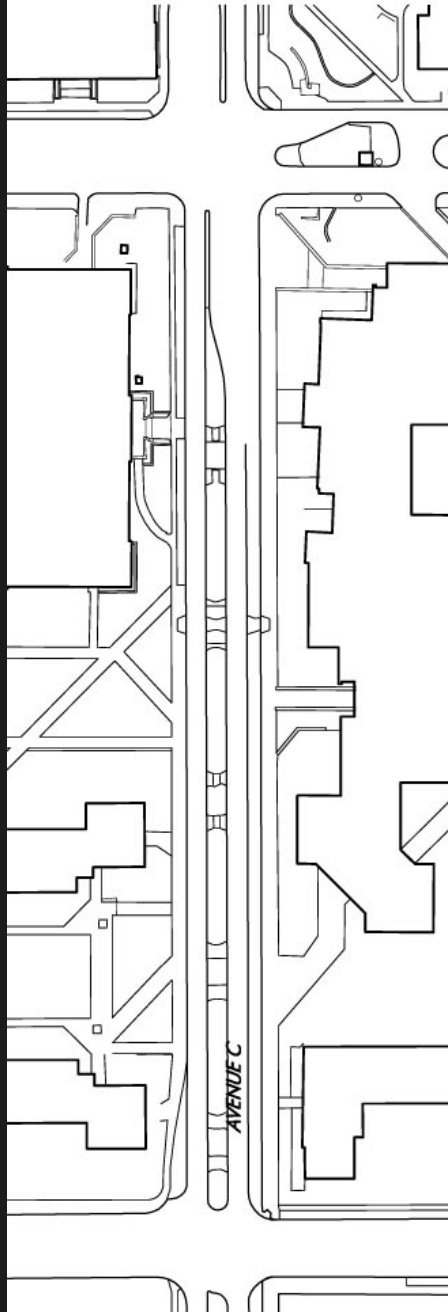
## Proposed Conditions



## Existing Conditions



# AVENUE C

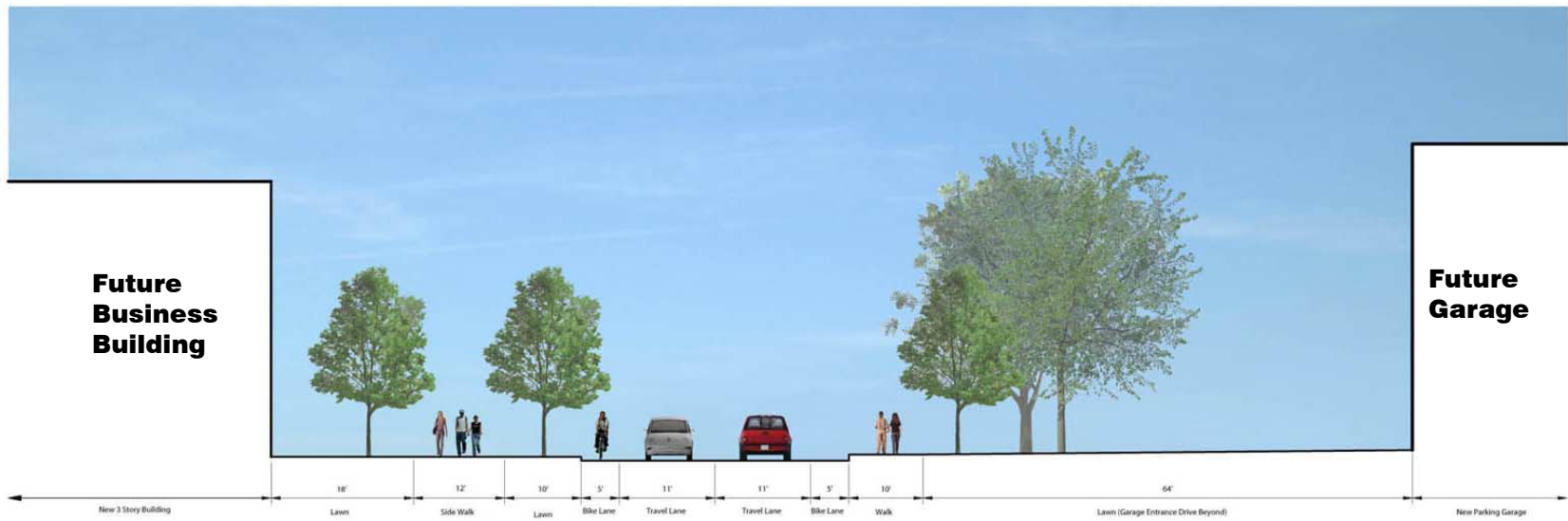


# CHESTNUT AVENUE - EXISTING CONDITIONS

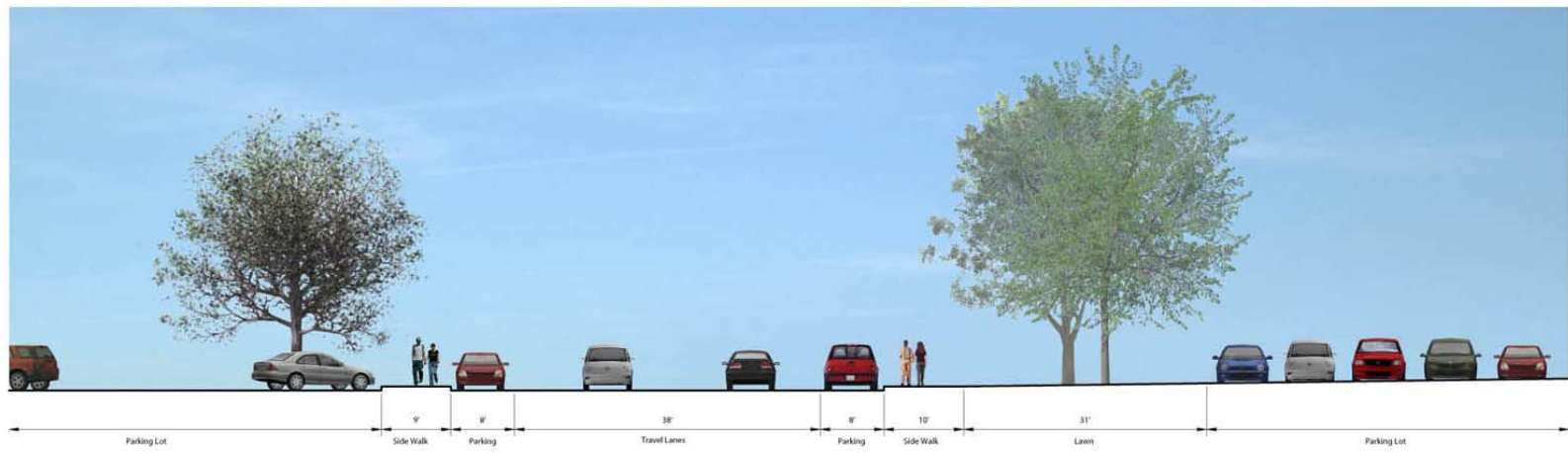
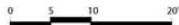




# CHESTNUT AVENUE

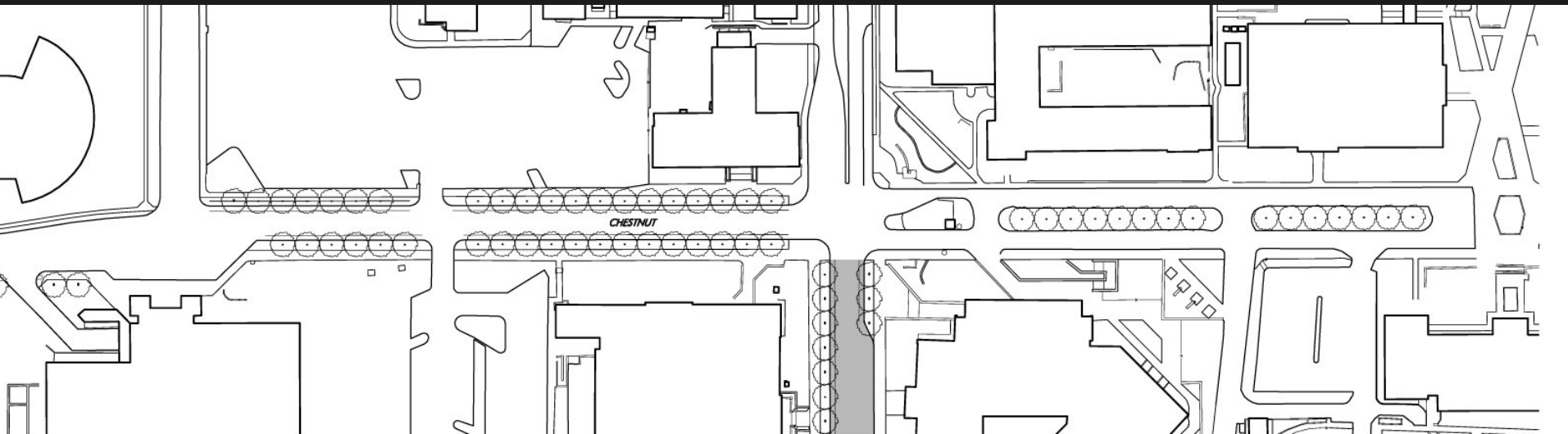
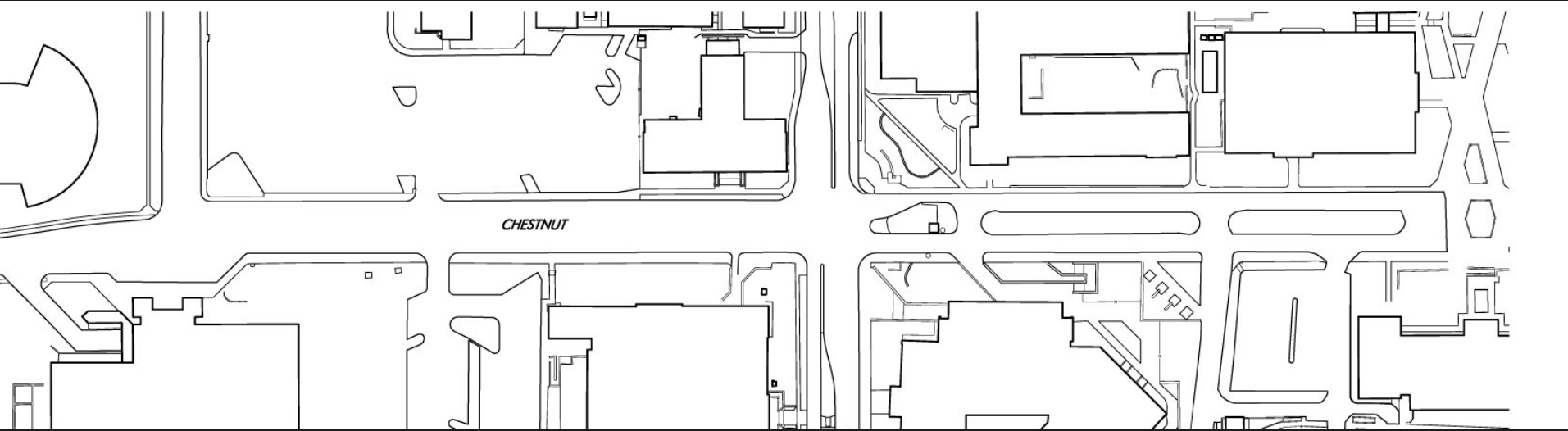


## Proposed Conditions



## Existing Conditions

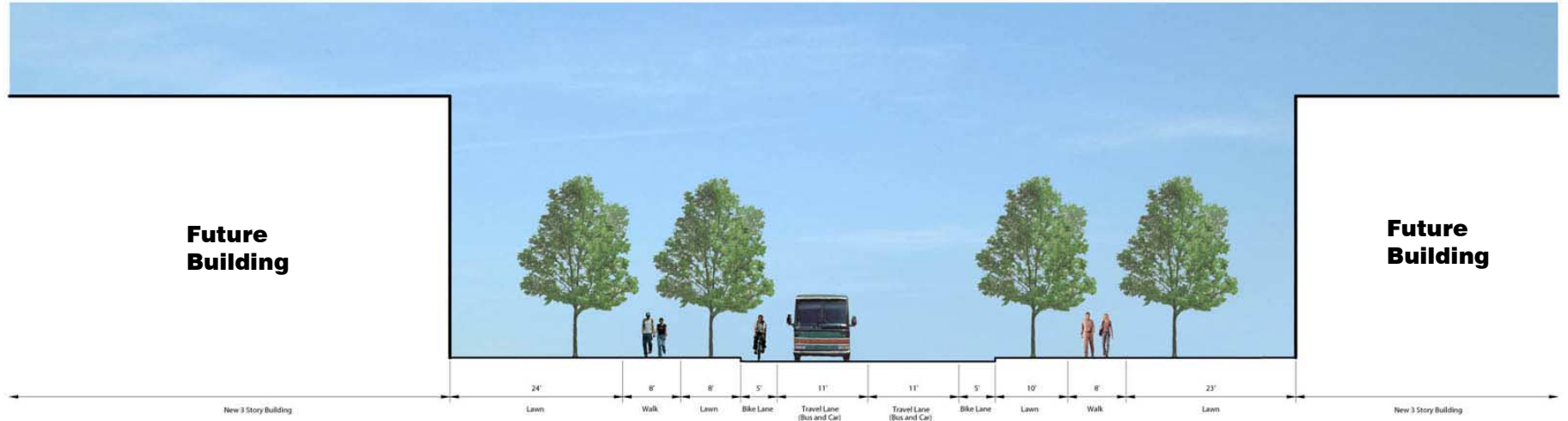
# CHESTNUT AVENUE



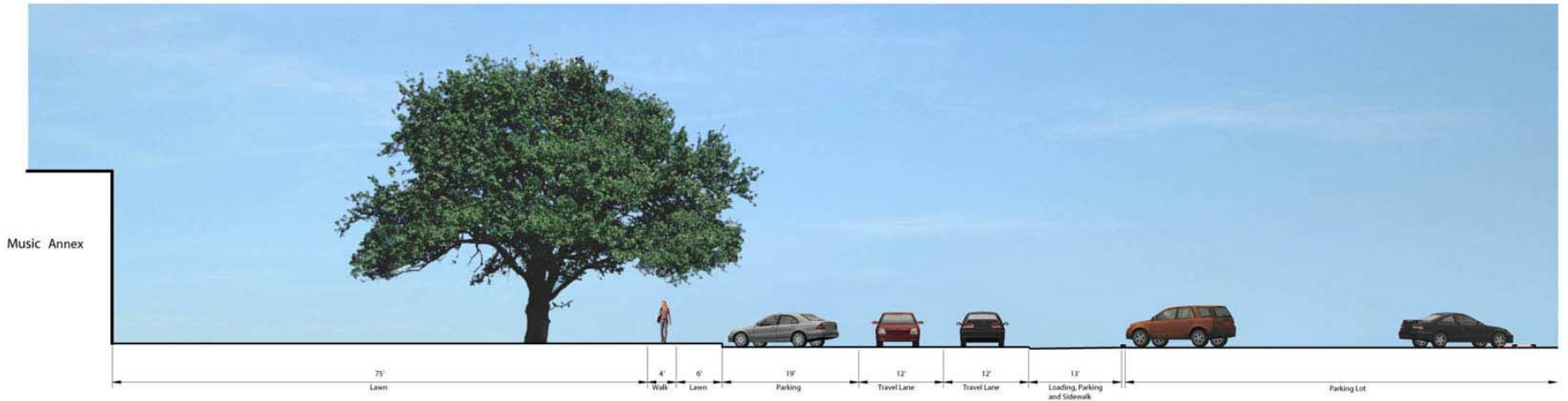
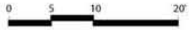
# HIGHLAND AVENUE - EXISTING CONDITIONS



# HIGHLAND AVENUE



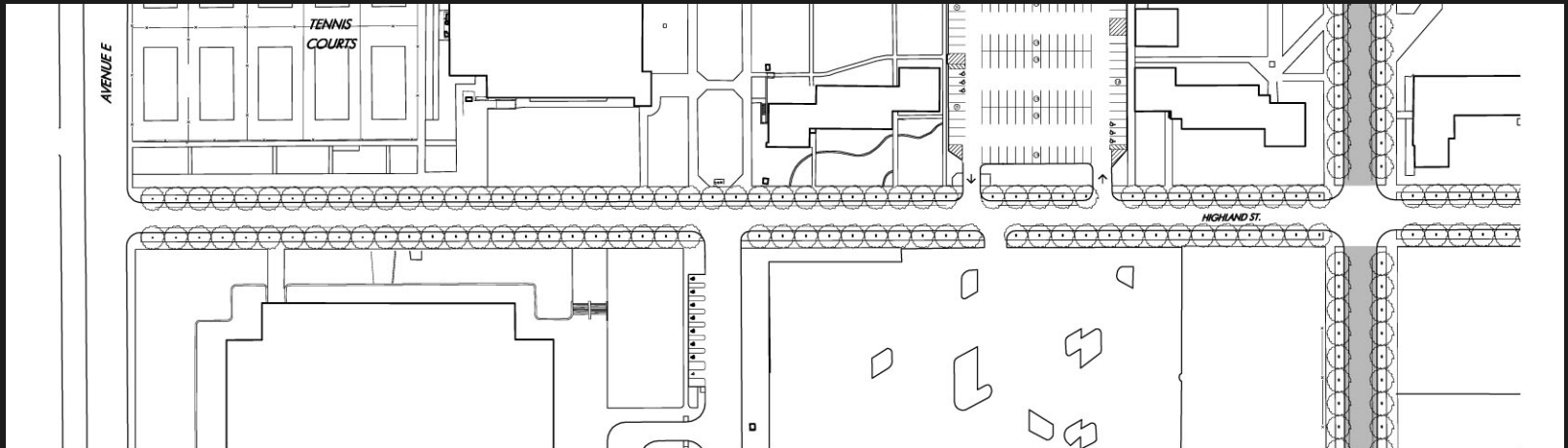
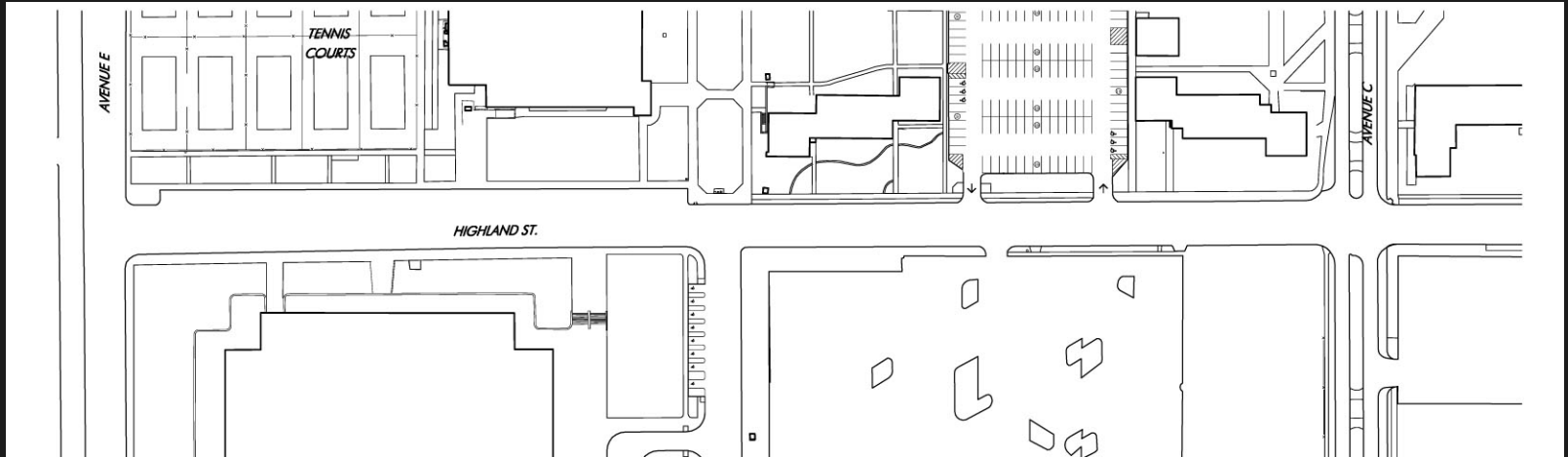
## Proposed Conditions



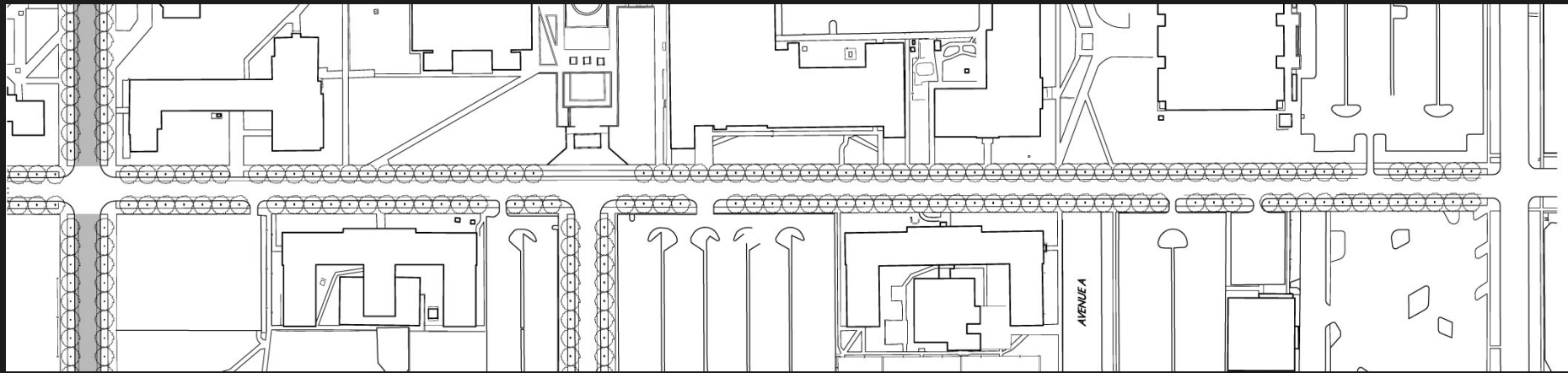
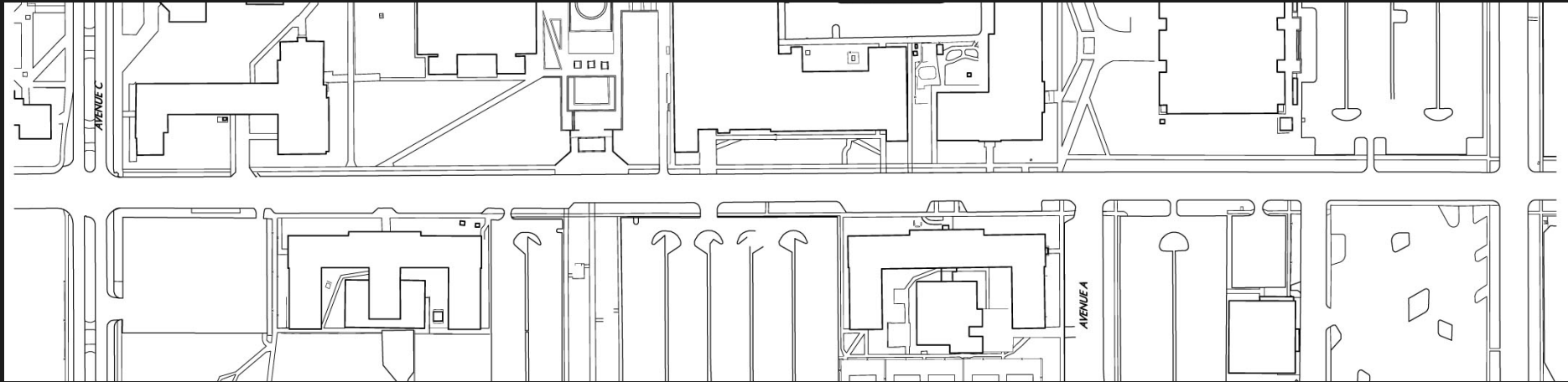
## Existing Conditions



# HIGHLAND AVENUE



# HIGHLAND AVENUE



END