



Ted Stevens Marine Research Institute

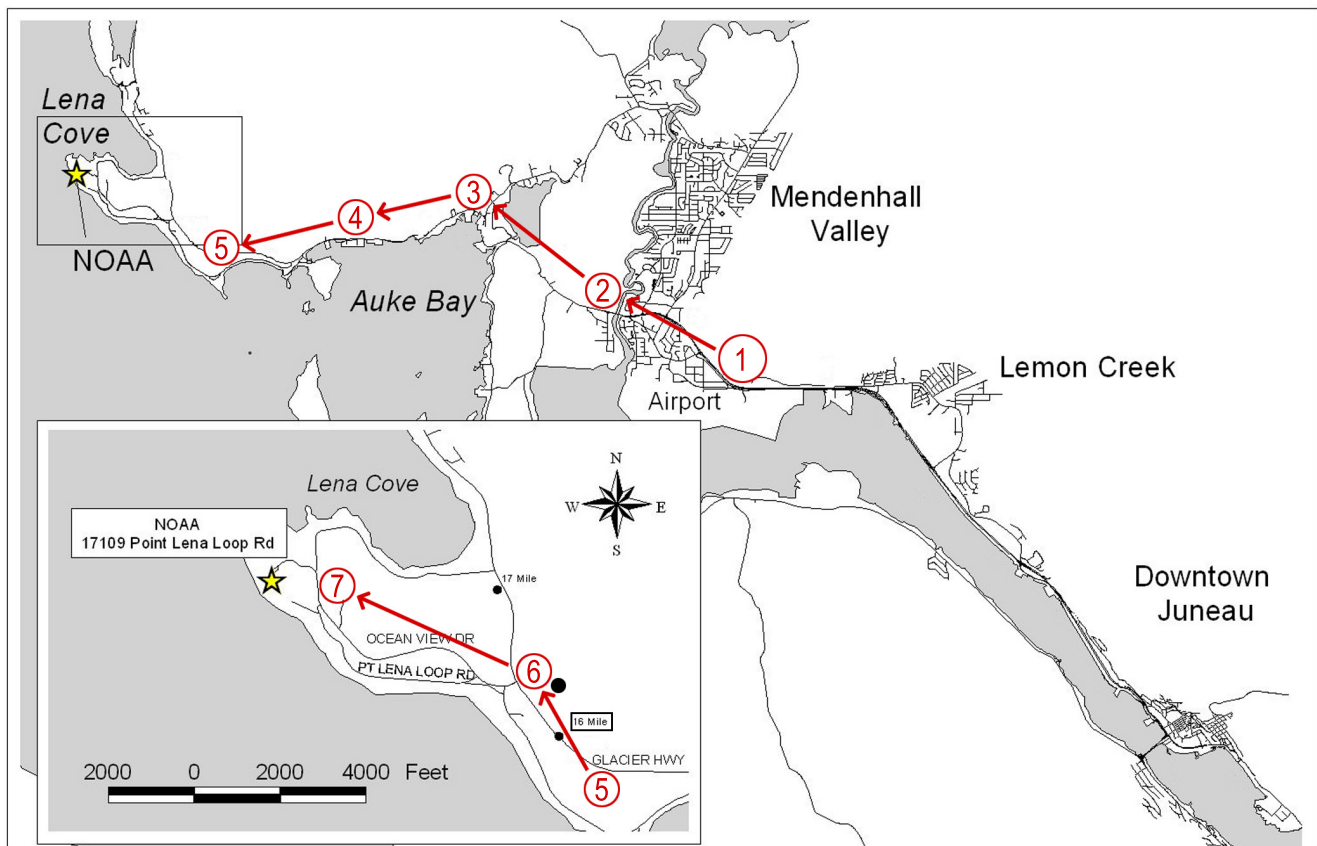
17109 Point Lena Loop Road
Juneau, Alaska 99801

Main Phone: (907) 789-6000

These instructions are being provided as the on-line map services (such as Google or MapQuest) do not give sufficient detail.

Directions:

- 1. From the Airport:** From exiting the doors at the baggage claim, drive right, left lane and left turn at “Welcome to Juneau” sign, turn left at stop sign, veer right at T-intersection, left at traffic light, drive to main highway intersection with traffic lights. Turn left onto Egan Drive
2. Continue a short distance to where the main road becomes Glacier Highway (two lanes) then crossing the bridge.
3. Continue driving past Auke Bay harbor, veering left (passing DeHart’s store on the left).
4. Continue driving past the Auke Bay Ferry Terminal (on the left).
5. You will go over a hilly bypass, and at the end of the bypass turn left at sign "Pt. Lena Loop Road". This is just past Mile 16 marker.
6. Take first left and veer to the right onto “Lena Access Road/NOAA”. After a mile you will pass the “at&t” communications towers on the left.
7. Shortly after the towers you will see the NOAA gate on the left. Drive through the gate.
(see further instructions below)



- Once inside the gate continue driving, passing the UAF building on the left.
- Continue to the parking lot. Park in the parking area labeled “Visitor Parking”.
- Enter the building through the main entrance (double doors at the center of the building).
- Walk up the stairs and take the set of double doors on the right to the reception area.
- Our secretary will be there to greet you. Welcome!