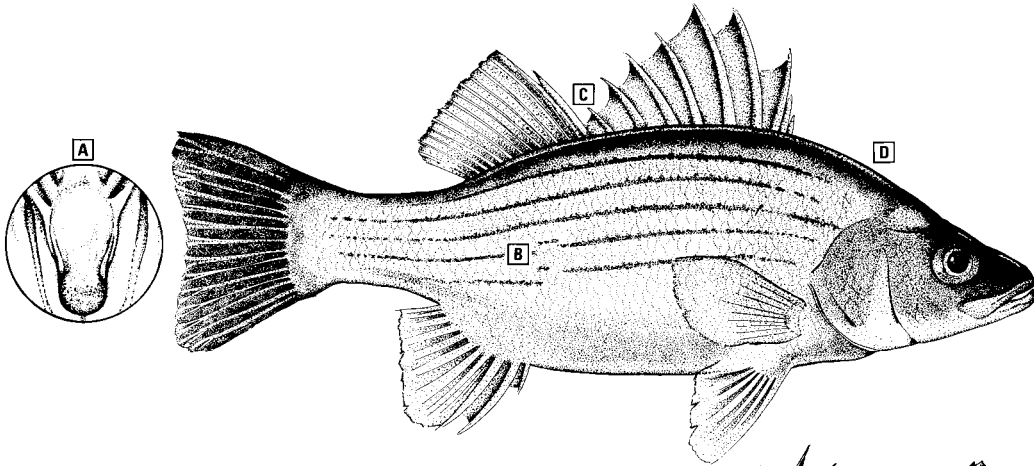


# STRIPED BASS and/or THEIR HYBRIDS

The following characteristics may be used in identifying species:

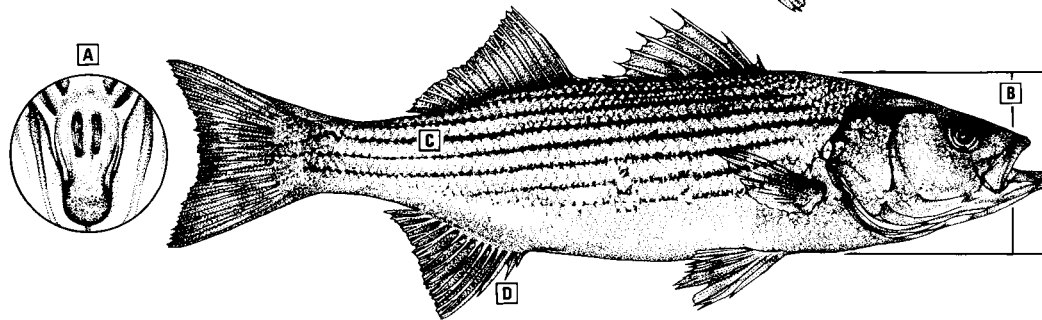
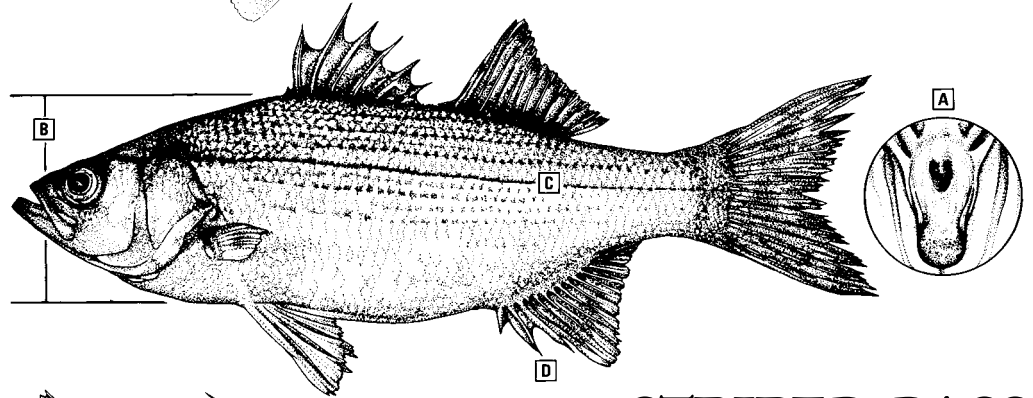


## YELLOW BASS

- A** No tooth patch on tongue. Small size, 1-2 lbs. maximum.
- B** Stripes distinct, broken above anal fin.
- C** Dorsal fins joined.
- D** Color – silvery yellow.

## WHITE BASS

- A** Back of tongue has 1 tooth patch.
- B** Body deep, more than 1/3 length.
- C** Stripes faint, only 1 extends to tail. Seldom exceeds 3 lbs.
- D** 2nd spine 2/3 or more the length of 3rd spine.



## STRIPED BASS

- A** Back of tongue has 2 distinct tooth patches.
- B** Body slender, less than 1/3 length.
- C** Stripes distinct, several extend to tail. 20 lbs. common.
- D** 2nd spine 1/2 the length of 3rd spine.

## HYBRID BASS

- A** Back of tongue has 2 distinct tooth patches.
- B** Body deep, more than 1/3 length.
- C** Stripes distinct, usually broken, several extend to tail. Seldom exceeds 10 lbs.
- D** 2nd spine 2/3 or more the length of 3rd spine.

