

FEES AND FACILITIES

Bastrop State Park

P.O. Box 518 • Bastrop, Texas 78602 • (512) 321-2101
www.tpwd.state.tx.us/bastrop/

Inquire about a Texas State Parks Pass – \$60 or \$75

ENTRANCE

Daily/Nightly Per Person Entrance Fees	
Adult (13 and older)	\$4/day
Adult Group Facility/Scenic Drive	\$2/day
Child (12 and under)	Free
Senior (date of birth <u>after</u> 9/1/30*)	
Texas Resident Only	\$2/day
Senior (date of birth <u>before</u> 9/1/30*)	Free
*Inquire about the Texas Parklands Passport	

CAMPSITES

Check-out is 2 p.m.

Primitive (maximum 4 people)	\$10/night
Water Only (tent sites)	\$12/night
Water and Electric	\$17/night
Water, Electric and Sewer	\$20/night
Overflow (No water, electric or sewer)	\$10/night

REFECTORY

Group Dining Hall (10 a.m. - 9 p.m.)	
Monday – Friday	\$250/day
Saturday – Sunday	\$300/day

GROUP BARRACKS

Four dorms with bunk beds and group kitchen with dining hall. Linens not provided. Check-in guaranteed by 5 p.m., check-out is 11 a.m.

Friday – Saturday	\$350/night
Sunday – Thursday	\$300/night

PICNIC SHELTER

Must be camping to reserve. Limited parking available.

	\$25/day
--	----------

GROUP YOUTH AREA

1-50 people	\$100/night
-------------	-------------

SWIMMING POOL

Open Memorial Day Weekend through Labor Day, 12 noon to 6:45 p.m. daily (closed Tuesday's).

Adult (13 and older)	
Without valid park entrance permit	\$4/day
With valid park entrance permit	\$2/day
Child (12 and under)	\$2/day
Individual Season Pass	\$60
Family Season Pass (up to 5)	\$100
Individual Lap Swimming Pass	\$50

CANOE RENTALS

Life vests and paddles provided.

Deposit	\$10/canoe
Rental per hour	\$5/canoe
Rental per day	\$15/canoe

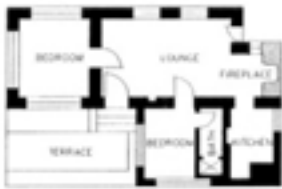
CABINS

Cabin #1 (5 person, 2 double beds, 1 single bed)	\$110/night
Cabin #2 (2 person, 1 double bed)	\$80/night
Cabin #3 (6 person, 3 double beds)	\$120/night
Cabin #4 (4 person, 1 double bed, 2 single beds)	\$100/night
Cabin #5 (5 person, 2 double beds, 1 single bed)	\$110/night
Cabin #6 (5 person, 2 double beds, 1 single bed)	\$110/night
Cabin #7 (5 person, 2 double beds, 1 single bed)	\$110/night
Cabin #8 (5 person, 2 double beds, 1 single bed)	\$110/night
Cabin #9 (6 person, 3 double beds)	\$120/night
Cabin #10 (4 person, 2 double beds)	\$100/night
Cabin #11 (3 person, 1 double bed, 1 single bed)	\$90/night
Cabin #12 (8 person, 2 double beds, 4 single beds)	\$200/night
Cabin #14 (4 person, 1 double bed, 2 single beds)	\$110/night

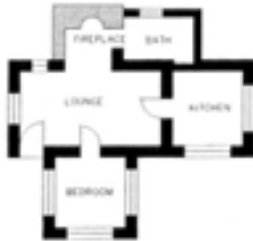
NOTE: All cabins are completely furnished, including bed and bath linens. Kitchen equipped with range top, microwave and refrigerator, but does not include cooking and eating utensils. Heating and A/C, as well as a fireplace. Check-in time is guaranteed by 5 p.m. and check-out time is 11 a.m. No pets allowed in the cabins. See Texas State Park Rules and Regulations for complete details on pets. All cabins are subject to a 13% hotel tax and per person entrance fee.

**For reservations, call: (512) 389-8900, Monday through Friday,
 9 a.m. - 6 p.m. or visit: www.tpwd.state.tx.us**

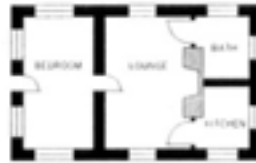
BASTROP STATE PARK CABINS



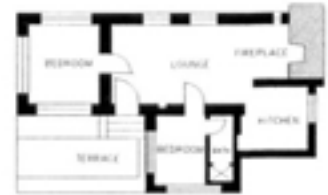
CABIN #1
"Sam Houston"
 (5 PERSONS)



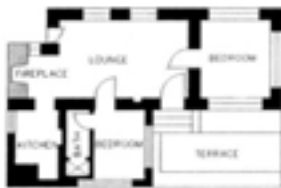
CABIN #2
 (2 PERSONS)



CABIN #3
"William B. Travis"
 (6 PERSONS)



CABIN #4
 (4 PERSONS)



CABIN #5
 (5 PERSONS)



CABIN #6
 (5 PERSONS)



CABIN #7
 (5 PERSONS)



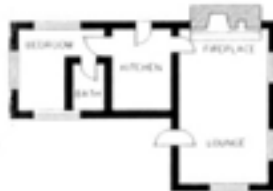
CABIN #8
 (5 PERSONS)



CABIN #9
 (6 PERSONS)



CABIN #10
 (4 PERSONS)



CABIN #11
 (3 PERSONS)



CABIN #12
"Lost Pines Lodge"
 (8 PERSONS)



CABIN #14
 (4 PERSONS – HANDICAP ACCESSIBLE)

Drawings of cabin floorplans by Lee Gallegos.



4200 Smith School Road • Austin, TX 78744

PWD LF P4505-043S (4/09)

In accordance with Texas State Depository Law, this publication is available at the Texas State Publications Clearinghouse, and/or Texas Depository Libraries.