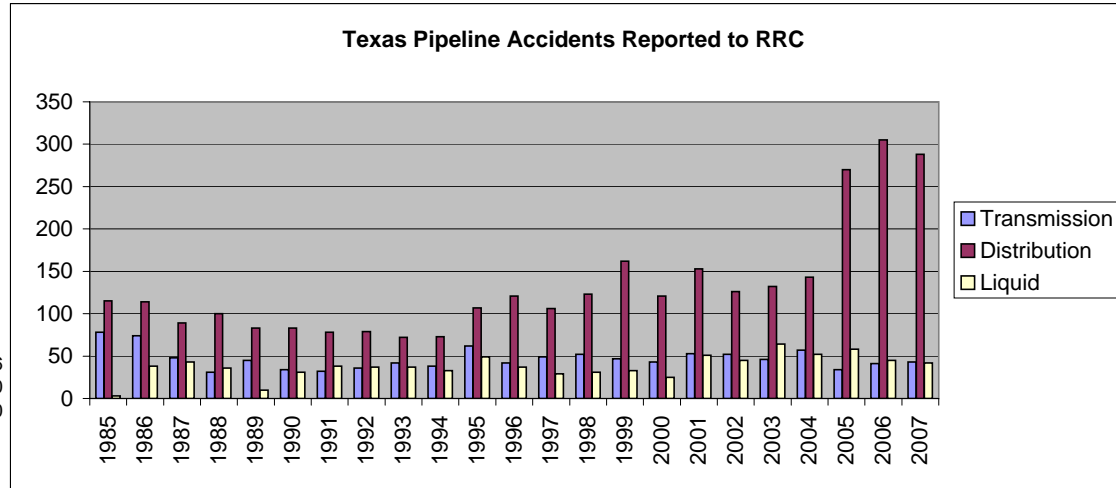


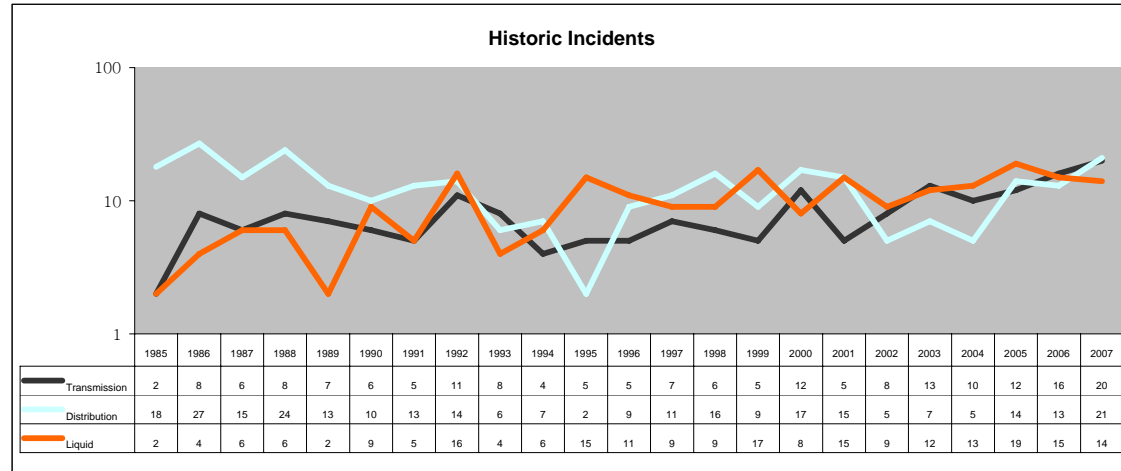
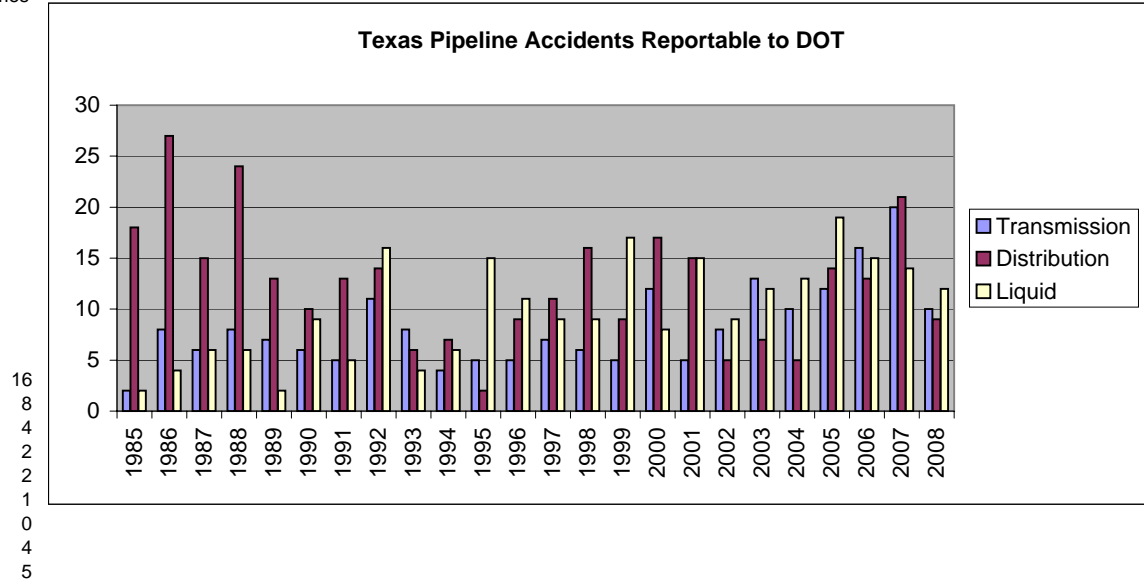
All Reports

	Transmission	Distribution	Liquid	Total Injuries	Total Fatalities
1985	78	115	3		
1986	74	114	38		
1987	48	89	43		
1988	31	100	36		
1989	45	83	10		
1990	34	83	31		
1991	32	78	38		
1992	36	79	37		
1993	42	72	37		
1994	38	73	33		
1995	62	107	49		
1996	42	121	37		
1997	49	106	29		
1998	52	123	31		
1999	47	162	33		
2000	43	121	25	16	6
2001	53	153	51	9	0
2002	52	126	45	4	0
2003	46	132	64	2	1
2004	57	143	52	2	1
2005	34	270	58	1	1
2006	41	305	45	2	4
2007	43	288	42	4	5



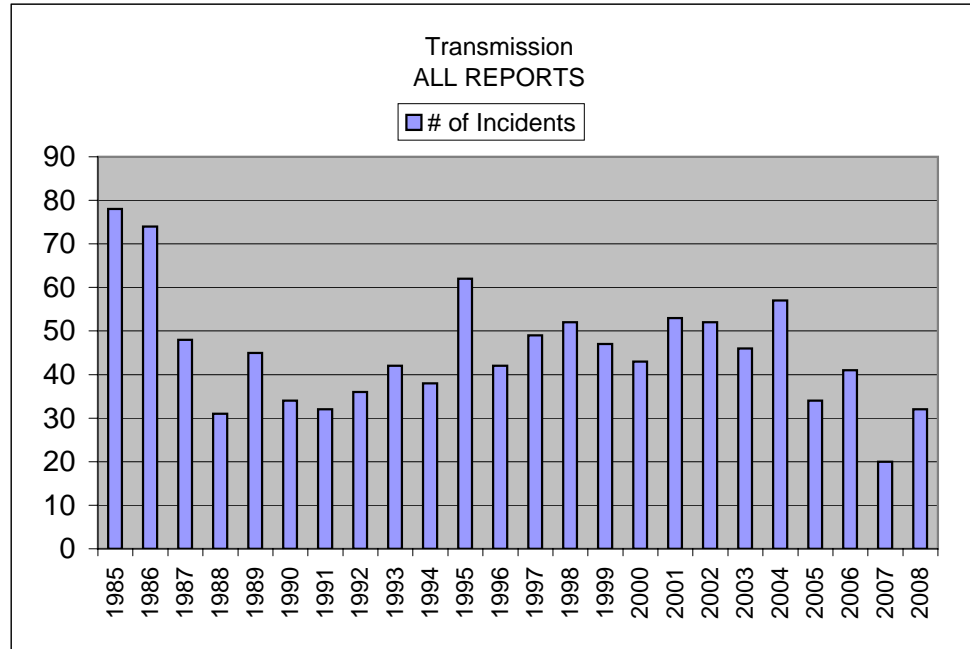
DOT Reports

	Transmission	Distribution	Liquid	Total Injuries
1985	2	18	2	2
1986	8	27	4	4
1987	6	15	6	6
1988	8	24	6	6
1989	7	13	2	2
1990	6	10	9	9
1991	5	13	5	5
1992	11	14	16	16
1993	8	6	4	4
1994	4	7	6	6
1995	5	2	15	15
1996	5	9	11	11
1997	7	11	9	9
1998	6	16	9	9
1999	5	9	17	17
2000	12	17	8	8
2001	5	15	8	15
2002	8	5	9	9
2003	13	7	12	12
2004	10	5	13	13
2005	12	14	19	19
2006	16	13	15	15
2007	20	21	14	14
2008	10	9	12	12



All Transmission Reports
of Incidents

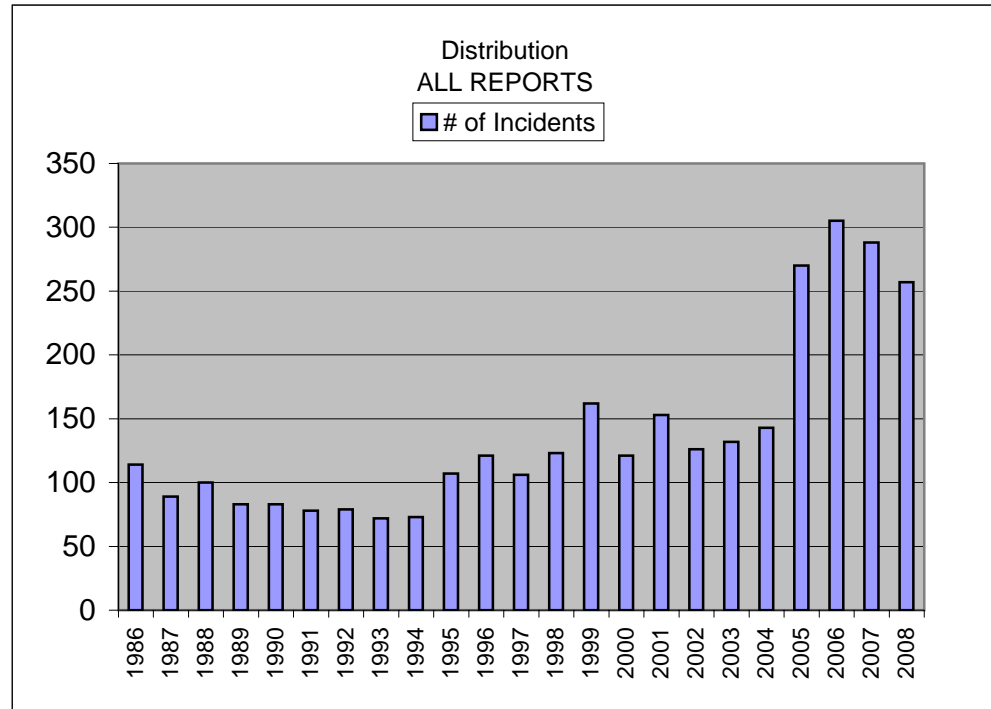
1985	78
1986	74
1987	48
1988	31
1989	45
1990	34
1991	32
1992	36
1993	42
1994	38
1995	62
1996	42
1997	49
1998	52
1999	47
2000	43
2001	53
2002	52
2003	46
2004	57
2005	34
2006	41
2007	20
2008	32



All Distribution Reports

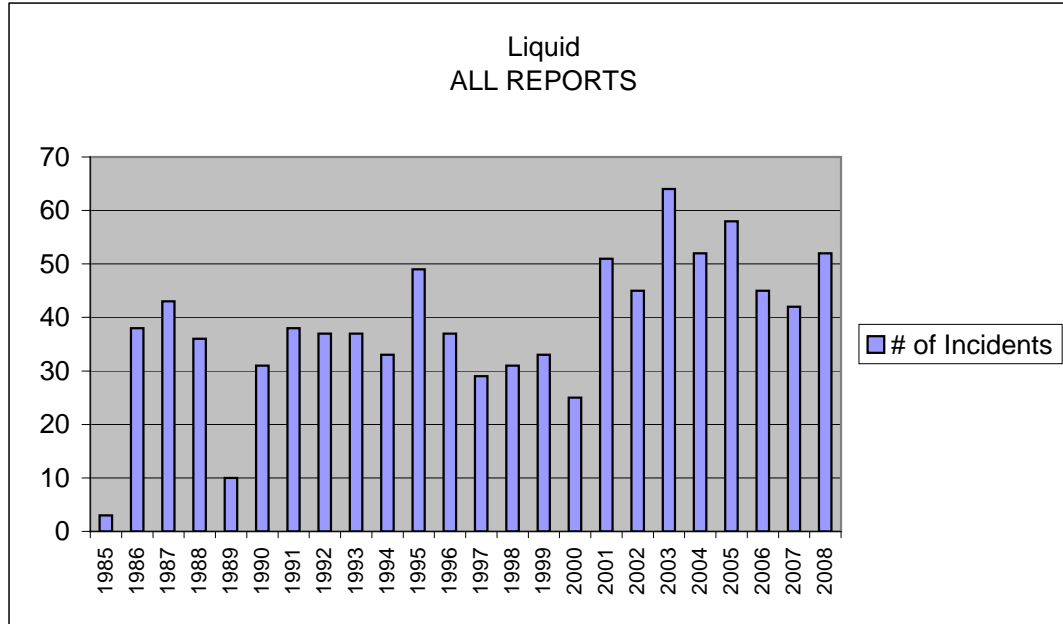
of Incidents

1985	115
1986	114
1987	89
1988	100
1989	83
1990	83
1991	78
1992	79
1993	72
1994	73
1995	107
1996	121
1997	106
1998	123
1999	162
2000	121
2001	153
2002	126
2003	132
2004	143
2005	270
2006	305
2007	288
2008	257



All Liquid Reports

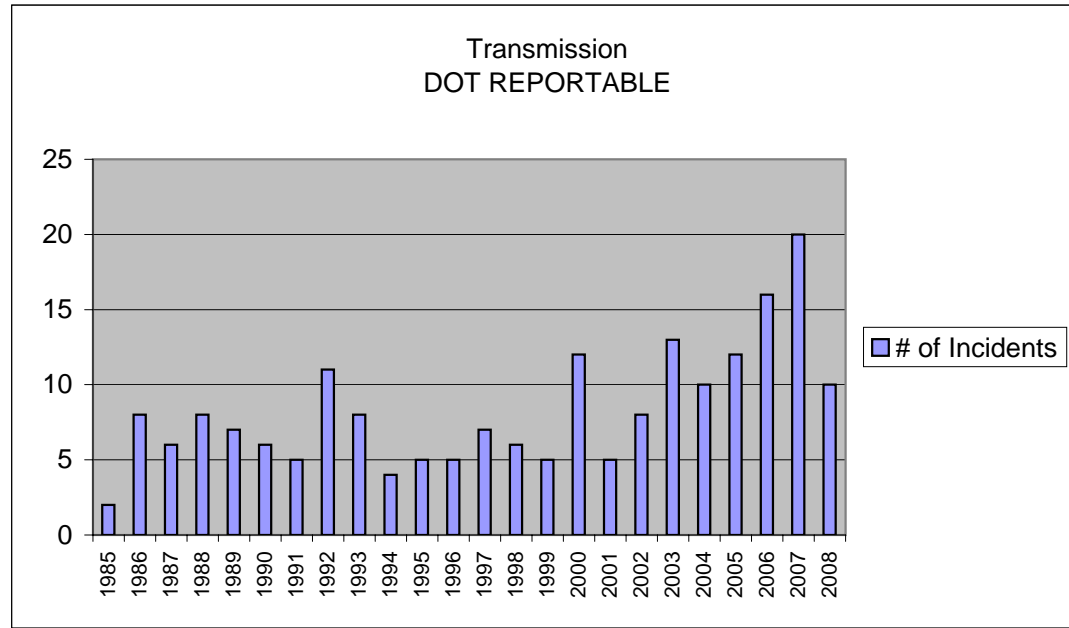
	# of Incidents
1985	3
1986	38
1987	43
1988	36
1989	10
1990	31
1991	38
1992	37
1993	37
1994	33
1995	49
1996	37
1997	29
1998	31
1999	33
2000	25
2001	51
2002	45
2003	64
2004	52
2005	58
2006	45
2007	42
2008	52



DOT Transmission Reports

of Incidents

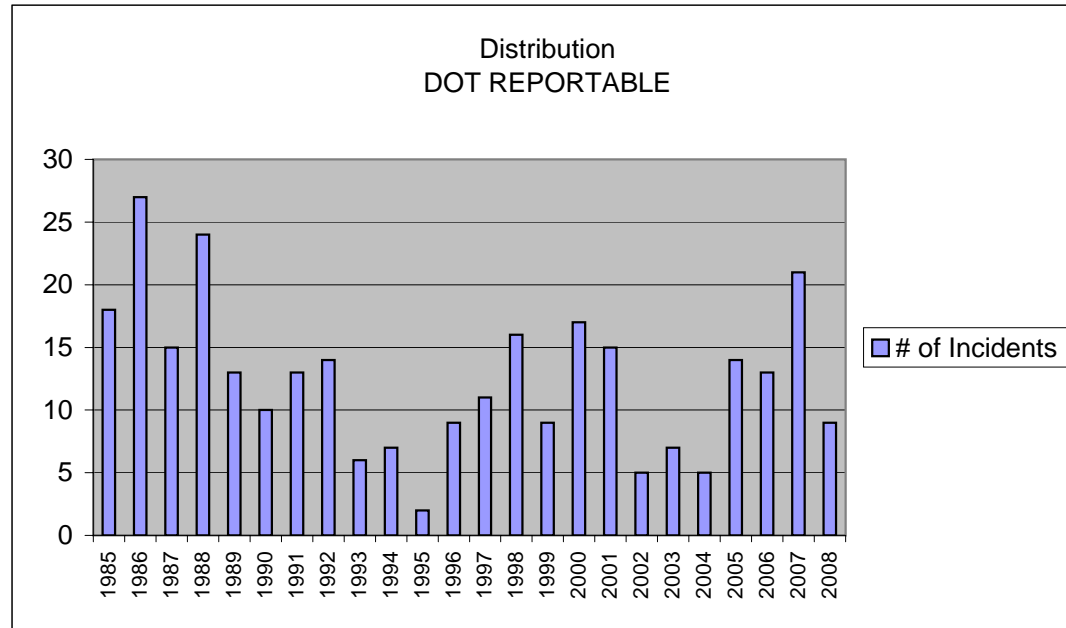
1985	2
1986	8
1987	6
1988	8
1989	7
1990	6
1991	5
1992	11
1993	8
1994	4
1995	5
1996	5
1997	7
1998	6
1999	5
2000	12
2001	5
2002	8
2003	13
2004	10
2005	12
2006	16
2007	20
2008	10



DOT Distribution Reports

of Incidents

1985	18
1986	27
1987	15
1988	24
1989	13
1990	10
1991	13
1992	14
1993	6
1994	7
1995	2
1996	9
1997	11
1998	16
1999	9
2000	17
2001	15
2002	5
2003	7
2004	5
2005	14
2006	13
2007	21
2008	9



DOT Liquid Reports

of Incidents

1985	2
1986	4
1987	6
1988	6
1989	2
1990	9
1991	5
1992	16
1993	4
1994	6
1995	15
1996	11
1997	9
1998	9
1999	17
2000	8
2001	15
2002	9
2003	12
2004	13
2005	19
2006	15
2007	15
2008	12

