

NOVEMBER ACTIVITIES

2006



Tomball Community Center

Website: www.ci.tomball.tx.us

221 Market St

Tomball, TX 77375

281-255-6221

MONDAY'S EVENTS

WALKING	8 – 9	ROOM A
EXERCISE	9 – 9:30	ROOM A
GAMES (VARIOUS)	9:30 – 11:30	ROOM B,C
SR. ORGANIZATION(1 st MON)	10 – 12:30	ROOM A
BRIDGE	12:30 – 3:30	ROOM A
TAKE A BREAK (5 TH MON)	9:30AM	ROOM A

6th - Farkel at 1p.m. in Room C.

6th - We will be having a health class on “Prostate Health” starting at 12:30 until 1pm. If you are interested in attending, please sign up before November 2nd.

EXERCISE



Come and enjoy the comforts of a clean and comfortable place to get in shape. You'll meet friendly people and lots of smiles. 😊😊



BRIDGE CLUB

Every Monday @ 12:30p.m.

Bridge is open for anyone that is a serious player. If you are interested in joining this group, please contact the President Joe Richardson or the Center.

SENIOR ORGANIZATION



1st MONDAY EVERY MONTH @ 10A.M.

This organization is open to 50 & older for the purpose of uplifting each other in fun, fellowship, and support. We also do food drives and toy drives as we assist other organizations that may need our help and support within the community. If you are interested in joining this group, please contact the President Judy Turner 281-257-3017.

TUESDAY'S EVENTS

WALKING	8 – 9	ROOM A
BLOOD PRESSURE CHECK	8 - 3	ROOM E
QUILTING	9 – 11:30	ROOM A
DELPHIANS (1 st & 3 rd TUE)	10 – NOON	ROOM B
LINEDANCING	1 - 2	ROOM A
GAMES (VARIOUS)	1 – 3:30	ROOM B
BEG. BRIDGE	2:30-3:30	ROOM B

7th- The City's bus will depart at 10:30am to eat at King Palace. Please register before November 3rd.

7th - Origami class begins at 9:30a.m. in Room B.

14th - Flu shots will be in Room A. See details below.

14th - Hometown Kitchen Band will be performing at Southern Knights at 2p.m. Performers, please be there at 1:45p.m

21st - 50+ luncheon for \$4.00 served at 11:45a.m. The menu will consist of having Domino's Pizza. Please sign up before November 17th.

21st - Origami class begins at 9:30a.m. in Room B.

28th – The Center's bus will depart at 9:30a.m. to do some early shopping at the Woodland's Mall. Please sign up before November 24th. We should return by 2p.m.



FLU SHOTS NOVEMBER 14TH

10-noon, 1-2:30p.m.



Home Health Resources will be administering flu shots this year. You must call the Center and reserve your shot before November 10th.

This service is offered at a cost of \$20.00 to those of 18yrs of age & up. Medicare will be billed for senior citizens who have Medicare Part B direct. (must show your card). All others must pay with cash or check. **Note:** They have asked if you can wear short sleeves.

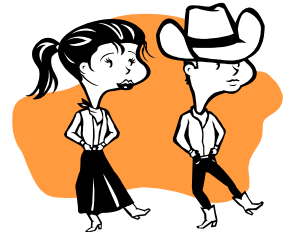
MORE TUESDAY'S EVENTS

NAMI METROPOLITAN HOUSTON

2ND TUESDAY @ 6:00 – 9:30 P.M.

This organization is for charitable and educational purposes relating to the promotion, support, development and furtherance of rehabilitation services and treatment programs for persons who suffer from mental illness in Harris County, Texas. Monthly meetings are open to the public and are held the second Tuesday of each month. For more information call.

LINEDANCING



Come every Tuesday at 1 p.m. to learn how to line dance with volunteer, Terry Mandzuk. It's fun and you get a full work out. We would love to have you just visit and watch. Open to all ages.



BEGINNERS BRIDGE

2:30 – 3:30 p.m. - Room B

Volunteer Katherine Bowers will be teaching this class for those of you that are interested in learning how to play. **Learning class only.**

TOMBALL ARCHEOLOGICAL RECOVERY

1st TUESDAY EVERY MONTH

7:00 – 9:00 P.M.



TARC group is to promote the hobby of metal detecting, discovering and preserving the history of the local area while having fun, fellowship, and trading treasure hunting stories. It is open to everyone. If you would like more information, please contact the Center at 281-255-6221.

WEDNESDAY'S EVENTS

WALKING	8 – 9	ROOM A
EXERCISE	9 – 9:30	ROOM A
GAMES (VARIOUS)	9:30 – 11:30	ROOM B,C
ROTARY	11 – 1:30	ROOM A
ROTARY BOARD (2 nd WED)	1:30 – 2:30	ROOM B

1ST - The Center's bus will depart at 10a.m. to play bingo in Conroe. You must be 8yrs+ to go. Please reserve your seat on the bus.

8th - Hometown Kitchen Band will be performing at Lawrence Health care at 2p.m. Performers, please be there at 1:45pm

15th - Hometown Kitchen Band will be performing at Harvest Homes at 2p.m. Performers, please be there at 1:45p.m.

15th - The Center's bus will be departing at 10:45am to go and dine at Mel's. Please sign up before November 13th.

EXERCISE



Come and enjoy the comforts of a clean and comfortable place to get in shape. You'll meet friendly people and lots of smiles.😊😊

WILD BUNCH RIDING & ROPING CLUB

2nd Wednesday



@ 7p.m.

This organization is open to all persons that are interested in promoting fellowship and social activities for the community. We sponsor family activities with a western related theme. This consists of campouts, rodeos, trail rides, parades, etc. Please contact the Center for more information.

THURSDAY'S EVENTS

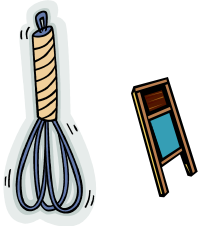
WALKING	8 – 9	ROOM A
BLOOD PRESSURE CHECK	8 - 3	ROOM E
HOMETOWN K- BAND	9 – 10	ROOM B
LA LECHE CLASS	10:30-12:30	ROOM B
BRIDGE FOR FUN	10-11:30	ROOM C
GAMES (VARIOUS)	1 – 3:30	ROOM C

9th - 50+ luncheon for \$4.00 served at 11:45a.m. The menu will consist of a Mexican casserole, green salad, roll and dessert. Please come by the office before the 6th to sign up.

9th - Bingo will be played in Room A at 12:30p.m.

23rd- The Center will be closed for the holidays.

30th - The Center will be departing at 10:30a.m. to eat at the Potato Patch. Please reserve your seat before the 28th.



HOMETOWN KITCHEN BAND



The Center has an outreach program that will benefit many within our Community. We are in need of volunteers with a hometown heart to come and practice for a half hour with us. Our mission is to enhance the quality of life for each individual, group or organization within our community. We will take reservations 2 month in advance. For more information call.

MORE THURSDAY'S EVENTS

KEEPING FIT



A Center staff is available to take your blood pressure every Tuesday and Thursday from 8 – 3p.m. All you need to do is stop by. We check and you track.

LA LECHE LEAGUE

2nd THURSDAY 10:30A.M.-12:30P.M.

The mission of this non-profit group that is open to the public, is to support and educate women who wish to breast feed their children.

SESQUICENTENNIAL PROMENADERS



EVERY THURSDAY @ 7:00 – 10 P.M.

If you are interested in meeting people and having fun come by and visit with us anytime. If you would like more information about square dancing, please contact the Center at 281-255-6221.

FRIDAY'S EVENTS

WALKING	8 – 9	ROOM A
PORCELAIN ART (1 ST FRI)	9:30 – 1:30	ROOM B
EXERCISE	9 – 9:30	ROOM A
TAKE A BREAK (5 TH FRI)	9:30A.M.	ROOM A
QUILTING	9:30 – 11:30	ROOM A
GAMES (VARIOUS)	9:30 – 11:30	ROOM A
POTLUCK (1 ST & 4 TH FRI)	11:45A.M.	ROOM A
50+ SINGLE GROUP(1 ST FRI)	12:30	ROOM B
BINGO (4 TH FRI)	12:30-1:30	ROOM B
MOVIE DAY (1 ST FRI)	1-4	ROOM D

3rd- Our movie for this month will be “Miracle on 34th Street”.

10th -For anyone that participates in any of the Center’s activities, we invite you to come and enjoy chili cheese nachos and a dessert for \$4.00 at 11:45a.m. Please come by the office to sign up before November 7th.

10th - Nursing students from the Texas Woman’s University will be out to talk about “Heart Healthy”. This class will begin as 12:30p.m in Room A. Anyone interested is welcomed.

17th - For anyone that participates in any of the Center’s activities, we invite you to come and enjoy soup, crackers and a dessert for \$4.00 at 11:45a.m. Please come by the office to sign up two days before.

PORCELAIN ART GUILD **1ST FRIDAYS AS SCHEDULED**



We love to paint on porcelain. This class will teach you how to be very creative and show you special techniques with paints by your instructor. If you are interested and would like to join our class please contact us at 936-539-6635.



Community Center Quilters **Tuesdays & Fridays**



This group quilts on behalf of the Center for anyone needing a quilt stitched. All proceeds they collect are donated back to various organizations on behalf of this group to help our community. These quilters are special and their volunteer time and work is very well appreciated. Experienced quilters are welcomed.

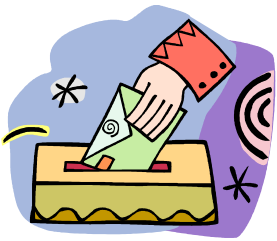
SINGLES GROUP FOR 50+

If you are interested in getting to know people that are outgoing and would like to socialize after hours or just go out for fun, then this group may be for you. The meetings will be held the 1st Friday of every month. Come to the meeting for details.

ATTENTION

Did you miss something? There are a lot of events going on this month, so be sure to look at every page. The two main events are the Fall Festival for those that participant in any of the Center's activities and the Health Fair. There is some thing for everyone and all ages. The **ONLY** events for 50+ are the Pct 4 bus trip each month, 50+ social club and the meals the staff cooks. Everything else is open to the public to join us. Ask a friend to come and pass the word around.

COMMUNITY MAIL BOX



The Center has a Community mail box located in the foyer at the Cherry Street entrance. This is for your convenience so that you can give your friends here at the Center a special card anytime of the year. You can place your birthday, valentine, or just a card of thinking of you in our box. **REMEMBER!** It is up to you to check the mail box for your mail. We will only deliver mail to you when our box is running over. This is a great way to save on stamps and trips to the post office. So, start writing those cards.

BINGO!

The Center is looking for those wishing to donate their unwanted treasures for bingo prizes. We are looking for small prizes to give away to our winners. If you have any unwanted or unopened gifts that will never be used and would like to clean house with them, they will surely be appreciated. We are looking for lotions, candles, trinkets, perfume samples, pot holders, what knots, etc. The saying is “What’s one man junk is another man’s Treasure”. We will have a treasure box located in the foyer by the Cherry street entrance for your drop offs. Thank you!

WHAT'S YOUR GAME!



The Center has various types of games on the book at different times of the week, so be sure to check the calendar for the time you would like to join us. On Mondays, Wednesdays and Friday mornings we have groups that play dominos, chicken foot and pennies. On Tuesdays we have a group that plays various games. On Thursday mornings we have a group that plays bridge for fun and in the afternoon on the same day we have a group that plays pennies. If you have never visited with us and are interested, you may want to call us first due to games or subject to change due to the usage of our rooms. If there is a change of status, we will post a notice on the door of the room. We do apologize in this event and playing time will resume at the regular time if no room is available that day.

VOLUNTEERS

If you would like to volunteer at the Center, please contact the office. If you have a talent in teaching, educating the public, or just want to help others. Whatever your expertise may be, the Center has a place for you. Call us for more information.



NORTHWEST AMATEUR RADIO SOCIETY



This club provides emergency communications to many organizations during disasters. These include the American Red Cross, the National Weather Service and the Harris County Office of Emergency Management. NARS provides an exam program for amateur radio operators to become licensed. For more information, please contact the Center.



GIRL SCOUT TROOPS

The Center has several different troops that meet here each month in the evening. If you are interested in getting involved in one of these groups, please contact the Center for more information.

Tomball Community Center Staff

Wanda Sutton – Director

Terrie Marchand

Kendra Leonard