

MAY ACTIVITIES



Tomball Community Center
Website: www.ci.tomball.tx.us
221 Market St
Tomball, TX 77375
281-255-6221

MONDAY'S EVENTS

WALKING	8 – 9	ROOM A
EXERCISE	9 – 9:30	ROOM A
GAME TIME	9:30 – 11:30	ROOM B
SR. ORGANIZATION(1 st MON)	10 – 12:30	ROOM A
BRIDGE	12:30 – 3:30	ROOM A

8th – The Center's bus will depart at 10:30a.m. and will eat at Joe's Crab shack. Please sign up before May 9th.

15th - For anyone that participates in any of the Center's activities, we invite you to come and enjoy nacho's with us for \$3.00. Please sign up in the office before May 11th. We serve at 11:30 a.m.

29th - The Center is closed for Memorial Day.



EXERCISE

Come and enjoy the comforts of a clean and comfortable place to get in shape. You'll meet friendly people and lots of smiles. 😊😊



BRIDGE CLUB

Every Monday @ 12:30p.m.

Bridge is open for anyone that is a serious player. We play every Monday starting at 12:30p.m. If you are interested in joining this group, please contact the President Joe Richardson or the Center.

SENIOR ORGANIZATION



1st MONDAY EVERY MONTH @ 10A.M.

This organization is open to 50 & older for the purpose of uplifting each other in fun, fellowship, and support. We also do food drives and toy drives as we assist other organizations that may need our help and support within the community. If you are interested in joining this group, please contact the President Judy Turner or the Center.

TUESDAY'S EVENTS

WALKING	8 – 9	ROOM A
BLOOD PRESSURE CHECK	8 - 3	ROOM E
QUILTING	9 – 11:30	ROOM A
DELPHIANS (1 st & 3 rd TUE)	10 – NOON	ROOM B
LINEDANCING	1 - 2	ROOM A
GAME TIME	1 – 3:30	ROOM B

2nd - 50+ luncheon for \$4.00 served at 11:45a.m. The menu consists of chalupa, beans, rice, guacamole, dessert and drink. Please sign up before April 28th.

16TH - The Center's bus will depart at 11a.m. and will eat at the Pepper Chino Restaurant. Afterwards, we will visit the Funeral Museum. The cost is \$4.00 (Lunch excluded). Please sign up before May 12th.

TOMBALL ARCHEOLOGICAL RECOVERY



1st TUESDAY EVERY MONTH
7:00 – 9:00 P.M.



TARC group is to promote the hobby of metal detecting, discovering and preserving the history of the local area while having fun, fellowship, and trading treasure hunting stories. It is open to everyone. If you would like more information, please contact the Center at 281-255-6221.



BEGINNERS BRIDGE
2:30 – 3:30 p.m. in Room A

Volunteer Katherine Bowers will be teaching this class for a limited time for those of you that are interested in learning how to play. This is for beginners only. Please sign up in the office.

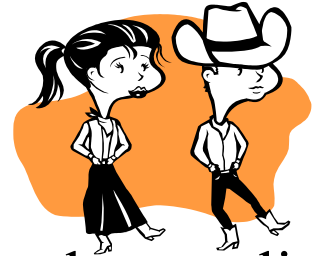
MORE TUESDAY'S EVENTS

NAMI METROPOLITAN HOUSTON

2ND TUESDAY @ 6:00 – 9:30 P.M.

This organization is for charitable and educational purposes relating to the promotion, support, development and furtherance of rehabilitation services and treatment programs for persons who suffer from mental illness in Harris County, Texas. Monthly meetings are open to the public and are held the second Tuesday of each month. For more information, please call the Center.

LINEDANCING



Come every Tuesday at 1 p.m. to learn how to line dance. It's fun and you get a full work out. We would love to have you just visit and watch if you like. A great time to meet new friends too! Open to all ages.

KEEPING FIT



A Center staff is available to take your blood pressure every Tuesday and Thursday from 8 – 3p.m. All you need to do is stop by. We check and you track.

WEDNESDAY'S EVENTS

WALKING	8 – 9	ROOM A
EXERCISE	9 – 9:30	ROOM A
GAME TIME	9:30 – 11:30	ROOM B
ROTARY	11 – 1:30	ROOM A
ROTARY BOARD (2 nd WED)	1:30 – 2:30	ROOM B

10th - Hometown Kitchen Band will be performing at Autumn Hills at 2p.m. Performers please be there at 1:45p.m.

24th - The Pct. 4 bus for 50+ will depart the Center at 9:30a.m. We will be touring the Houston of Natural Science Museum. Afterwards we will be eating at Cleburnes. The cost is \$15.00 with lunch costs on your own . Please signup before May 19th.

EXERCISE



Come and enjoy the comforts of a clean and comfortable place to get in shape. You'll meet friendly people and lots of smiles.😊😊

WILD BUNCH RIDING & ROPING CLUB

2nd Wednesday



@ 7p.m.

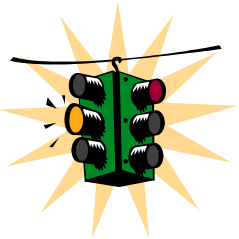
This organization is open to all persons that are interested in promoting fellowship and social activities for the community. We sponsor family activities with a western related theme. This consists of campouts, rodeos, trail rides, parades, etc. Please contact the Center for more information.

THURSDAY'S EVENTS

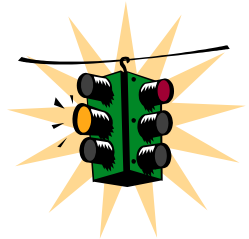
WALKING	8 – 9	ROOM A
BLOOD PRESSURE CHECK	8 - 3	ROOM E
HOMETOWN K- BAND	9 – 10	ROOM B
LA LECHE CLASS	10:30-12:30	ROOM B
GAME TIME	1 – 3:30	ROOM C

11th – For ladies only that participate in any of the Center's activities, we welcome you to come and enjoy breakfast with us at 8:30a.m. The cost is \$3.00 and you need to sign up before May 8th.

25TH – 50+ luncheon for \$4.00 served at 11:45a.m. The menu consists of fried chicken, corn on the cob, slaw, beans, dessert and drink. Please sign up before May 22nd.



May 11th & 12th
Noon till 4:00 p.m. – Room B



Requirements: You must be past your 50th birthday, have a valid driver's license, and have NO outstanding traffic violations. Certificates are awarded after completion of the full eight hour course. The cost is \$10.00 and must be paid in the office at time of reservations. Make check payable to AARP. Class must have a minimum of 12 and a maximum of 30. Deadline is the 6th.

SESQUICENTENNIAL PROMENADERS

EVERY THURSDAY @ 7:00 – 10 P.M.



If you are interested in meeting people and having fun come by and visit with us anytime. Visitors are welcome. If you would like more information about square dancing, please contact the Center at 281-255-6221.

MORE THURSDAY'S EVENTS

LA LECHE LEAGUE

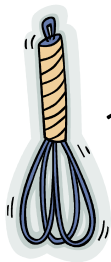
2nd THURSDAY 10:30A.M.-12:30P.M.

The mission of this non-profit group that is open to the public, is to support and educate women who wish to breast feed their children.

HARRIS COUNTY PUBLIC HEALTH & ENVIRONMENTAL SERVICES

No advance registration required. Any questions please call consumer Health at (713) 439-6270

- Fee:** Free to all Harris County food service personnel
- Time:** Class begins at 8 a.m. to 4:00p.m.
- Date:** May 18th in Room A



HOMETOWN KITCHEN BAND



Thursday @ 9a.m.



The Center has an outreach program that will benefit many within our Community. We are in need of volunteers with a hometown heart to come and practice for an half hour with us. Our mission is to enhance the quality of life for each individual, group or organization within our community. We will take reservations 2 month in advance. For more information, please call us.

FRIDAY'S EVENTS

WALKING	8 – 9	ROOM A
PORCELAIN ART (1 ST FRI)	9:30 – 1:30	ROOM B
EXERCISE	9 – 9:30	ROOM A
TAKE A BREAK (5 TH FRI)	9:30A.M.	ROOM A
QUILTING	9:30 – 11:30	ROOM A
GAME TIME	9:30 – 11:30	ROOM A
POTLUCK (1 ST & 4 TH FRI)	11:45A.M.	ROOM A
BINGO (2 ND & 4 TH FRI)	1 - 2	ROOM B

5th - Potluck, all ages attending bring a dish.

5th - At 1p.m. we will show a 30 minute film titled
“ Too Good to be True”. This will teach you on
how to avoid being ripped off.

12th – AARP class continues at noon in Room B

12th – Bingo for all ages, played in Room A today only.

26th - Bingo for all ages

26th – Potluck, all ages attending bring a dish.

EXERCISE



Come and enjoy the comforts of a clean and comfortable place to get in shape. You'll meet friendly people and lots of smiles.☺☺

PORCELAIN ART GUILD

1ST FRIDAYS AS SCHEDULED



We loves to paint on porcelain. This class will teach you how to be very creative and show you special techniques with paints by your instructor. If you are interested and would like to join our class please contact us at 936-539-6635.

REMINDER NOTES

- Pct. 4 trips are for participants age 50+. The **only** exception is if the participant has a caregiver that must go with them. In this case a written note must be provided by the Doctor. There is no food on a Pct. 4 bus, only water in a closed container. These rules are not the Center's, but Precinct 4.
- Center's meal's for 50+ luncheon are for 50+ only. The **only** exception is if the participant has a caregiver that assist them. This age was set in accordance to those that recognize 50 as a senior, which are: AARP and Pct. 4. Any other exceptions to this must be approved by the office.
- Social's at the Center are opened to any age as long as the participant is involved in any of the Center's activities. These events are offered at a reduced cost to you. It's our way of saying we appreciate you being involved and supporting your local Community Center.
- The Center's bus trips are opened to any age as long as the participant does not require a restraining type seat. Our bus is a 25 passenger and is open on a first come sign up basis according to the trip outing and details. Our bus is brand new and therefore we will have the same ruling as Pct.4 in regards to no food and only water in a closed container.
- Center's potluck luncheons are open for all ages. Anyone attending just needs to bring a dish. We do however request that you bring your dish in a microwave able container. It will also help us if you label your food as to hot or cold dish. Please do not bring your left over, half eaten foods, or out dated food. We want our foods to be safe.

MEMORIAL DAY HISTORY



General John Logan

Memorial Day, originally called Decoration Day, is a day of remembrance for those who dies in our nation's service. Memorial Day was officially proclaimed on May 5, 1868, by General John Logan, national commander of the Grand Army of the Republic, in his **General Order No. 11**, and was first observed on May 30, 1868, when flowers were placed on the graves of Union and Confederate soldiers at Arlington National Cemetery. The first state to officially recognize the holiday was New York in 1873. By 1890 it was recognized by all of the northern states. The South acknowledge the holiday after the World War I. Memorial Day is now celebrated in almost every State on the last Monday in May (passed by Congress with the National Holiday Act of 1971 (P.L. 90-363) to ensure a three day weekend for Federal holidays.



NORTHWEST AMATEUR RADIO SOCIETY



This club provides emergency communications to many organizations during disasters. These include the American Red Cross, the National Weather Service and the Harris County Office of Emergency Management. NARS provides an exam program for amateur radio operators to become licensed. For more information, please contact the Center.

GIRL SCOUT TROOPS



The Center has several different troops that meet here each month in the evening. If you are interested in getting involved in one of these groups, please contact the Center for more information.

VOLUNTEERS

If you would like to volunteer at the Center, please contact the director. If you have a talent in teaching, educating the public, or just want to help others, or whatever your expertise may be. The Center has a place for you. Call us for more information.

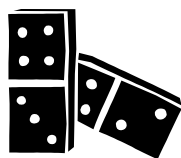
Community Center Quilters



Tuesdays & Fridays

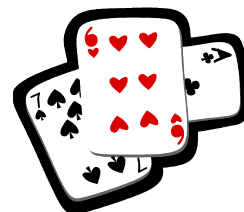


This group quilts on behalf of the Center for anyone needing a quilt stitched. All proceeds they collect are donated back to various organizations on behalf of this group to help our community. These quilters are special and their volunteer time and work is very well appreciated. New quilters are welcomed anytime.



GAME TIME

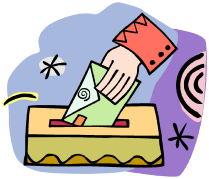
As scheduled on books



The Center has various times to play games. Check out the calendar and come join us for some fun. We have dominoes, cards, board games, skip bo, bridge, pennies, etc. Everyday we have some kind of games being played among other activities we do. All it takes is you!

JUNE 7TH

We have scheduled a Pct. 4 trip to go to the ballgame and you need to sign up before May 4th, so that we can purchase our tickets. We will be sitting in the bull pen section and the tickets are \$23.00. Pct. 4 bus trips make only if we have 10 confirmed participants. In the event this ballgame does not make we have planned a back up trip. We will be going to Galveston to ride the ferry from Galveston Island to Port Bolivar. We will lunch in Galveston and will leave the Center at 8:30a.m. The trip will be free, but lunch is your cost. If there is a change in plans, we will post this change below the clock on the westside of the building. So, be on the look out.



COMMUNITY MAIL BOX

The Center has a Community mail box located in the foyer at the Cherry Street entrance. This is for your convenience so that you can give your friends here at the Center a special card anytime of the year. You can place your birthday, valentine, or just a card of thinking of you in our box. **REMEMBER!** It is up to you to check the mail box for you mail. We will only deliver mail to you when our box is running over. This is a great way to save on stamps and trips to the post office. So, start writing those cards.

Tomball Community Center Staff

Wanda Sutton – Director

Terrie Marchand

Catherine Rogers

Kendra Leonard