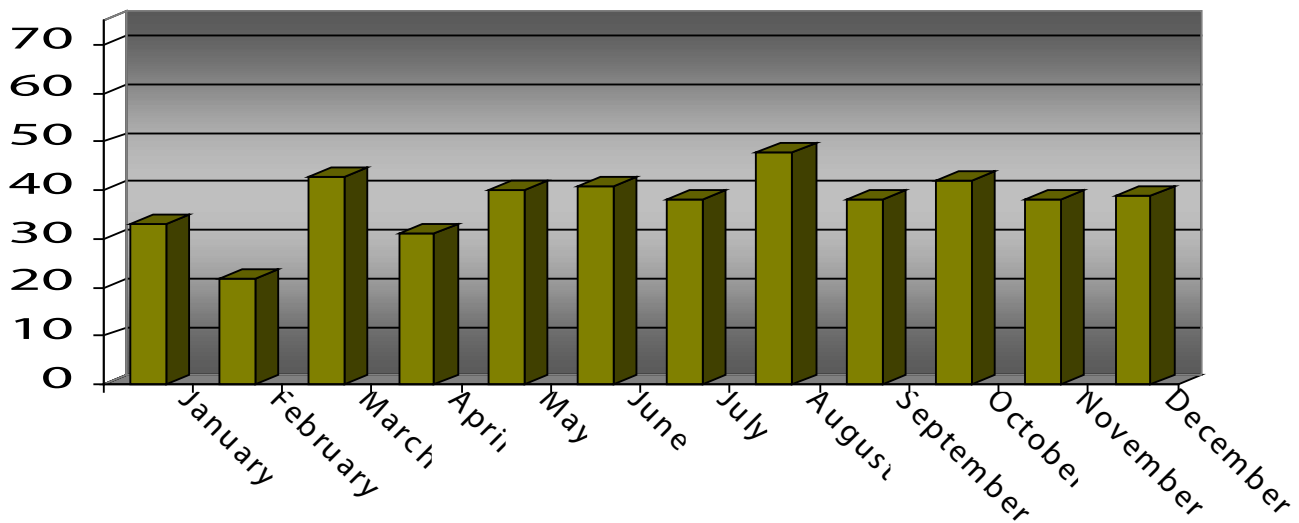


Annual Crime Trends



In 2008, the highest month for crime was August, with 48 index crimes reported. The lowest month of reported crime for 2008 was February with 22 index crimes reported.

Index Crimes by Month 2008



Type of Crime

Crime analysis usually looks at the two categories of crime mentioned before: Violent Crimes (or crimes against persons) and Property Crimes.

In 2008, 9% of the Crime Index was made up of violent crimes and 91% was property crimes. The statewide average is 11% violent crimes and 89% property crimes.

Type of Crime 2008

