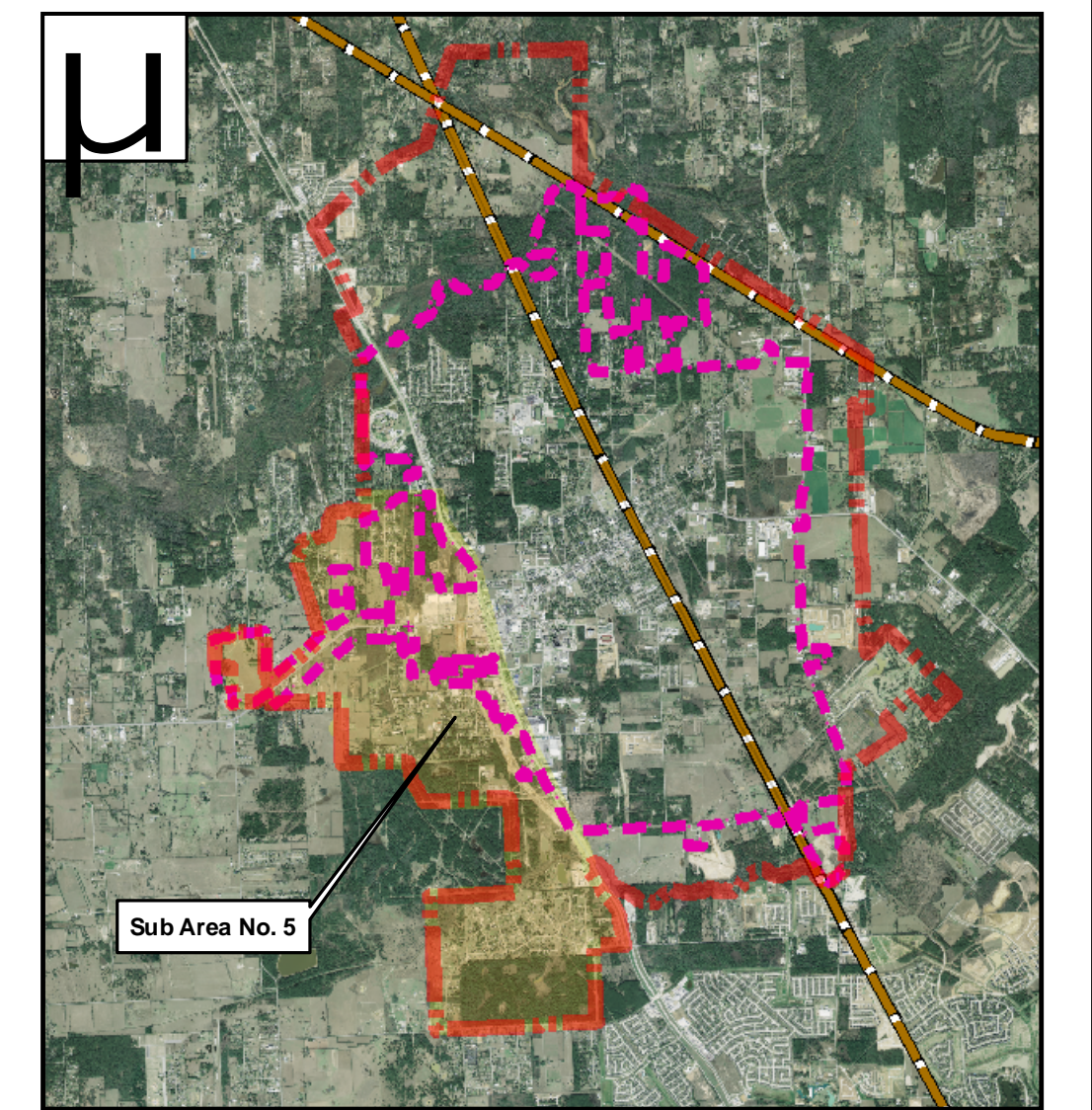


LEGEND:

- Tomball ETJ
 - Sub Area Boundary
 - Railroad
 - Creeks
 - Proposed Channel Corridor
 - 2008 Tomball City Boundary
- Ultimate Land Use**
- Commercial/Retail/Office
 - Residential
 - Industrial
 - Multi Family
 - Public
 - Drainage
- Future Land Use, 2017**
- Future Commercial/Retail/Office
 - Future Single Family
 - Future Industrial
 - Future Multi Family
 - Future Public
- Existing Land Use, 2007**
- Existing Commercial/Retail/Office
 - Existing Single Family
 - Existing Industrial
 - Existing Multi Family
 - Existing Public
 - Existing Drainage Easement

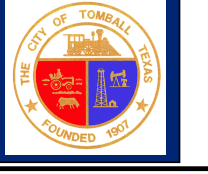
Aerial flown - August 2006
 500 250 0 500 Feet



OVERALL MAP SHOWING ALL SUB AREAS

**LAND USE MAP
 SUB AREA NO. 5**

**CITY OF TOMBALL
 MASTER PLAN 2007-2017
 TOMBALL, TEXAS**



lan Lockwood, Andrews & Newnam, Inc.
 A LEOPOLD COMPANY
 2925 Briarpark Drive, Houston, Texas 77042

Exhibit No:
2-6
 April 9, 2008

FILE: \\map\production\1191412\1025000\Prod\GIS\Project\MOX_Files\SubArea_No5_Final.mxd DATE: 4/9/2008