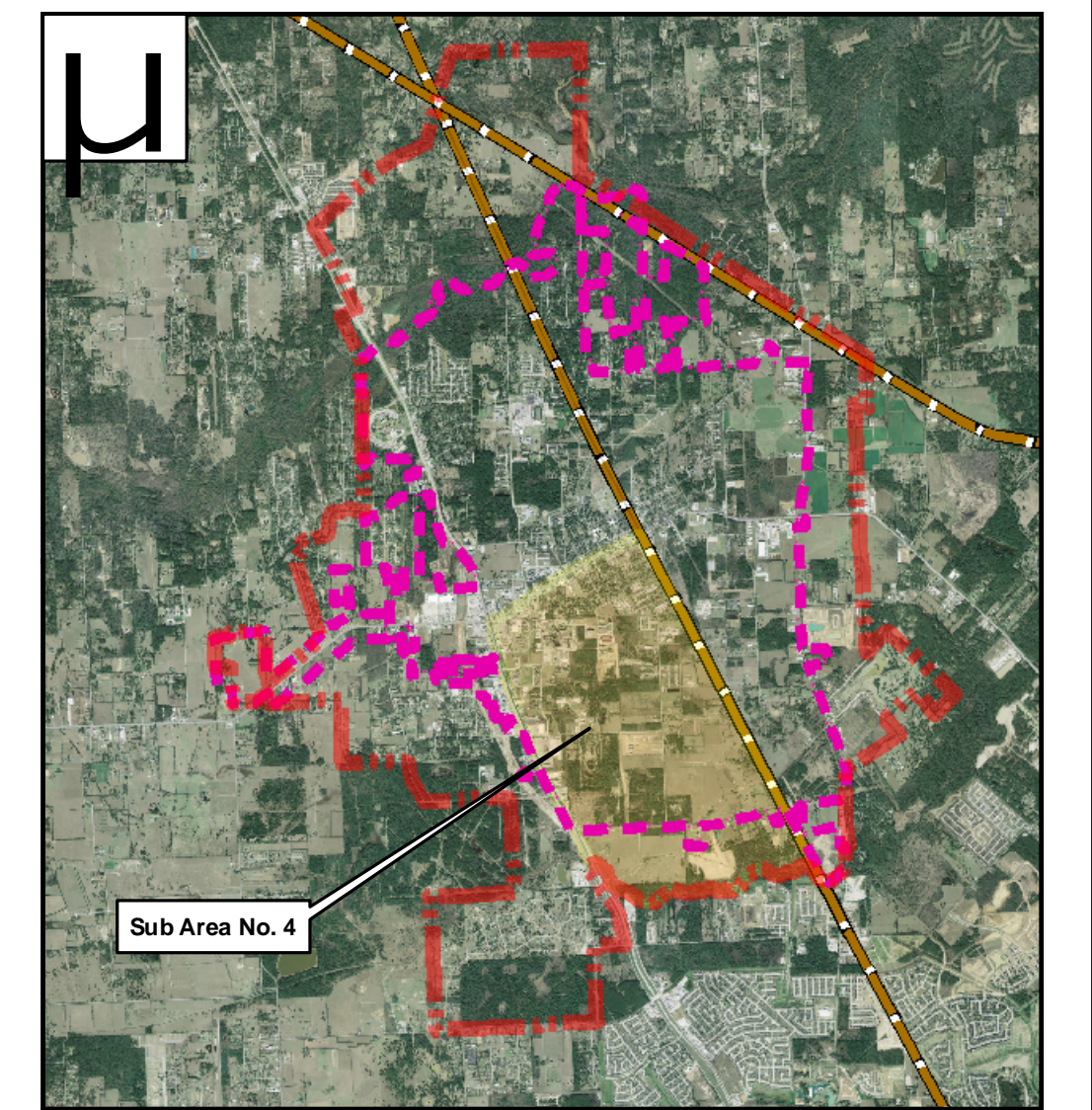


- LEGEND:**
- Tomball
 - Sub Area Boundary
 - 2008 Tomball City Boundary
 - Railroad
 - Creeks
 - Proposed Channel Corridor
 - Ultimate Land Use, 2017**
 - Commercial/Retail/Office
 - Residential
 - Industrial
 - Multi Family
 - Public
 - Drainage
 - Future Land Use, 2017**
 - Future Commercial/Retail/Office
 - Future Single Family
 - Future Industrial
 - Future Multi Family
 - Future Public
 - Existing Land Use, 2007**
 - Existing Commercial/Retail/Office
 - Existing Single Family
 - Existing Industrial
 - Existing Multi Family
 - Existing Public
 - Existing Drainage Easement

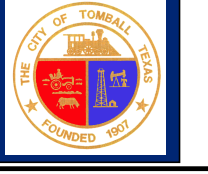
Aerial flown : August 2006
 0 200 400 Feet



OVERALL MAP SHOWING ALL SUB AREAS

**LAND USE MAP
 SUB AREA NO. 4**

**CITY OF TOMBALL
 MASTER PLAN 2007-2017
 TOMBALL, TEXAS**



lan Lockwood, Andrews & Newnam, Inc.
 A LEG A DAILY COMPANY
 2925 Briarpark Drive, Houston, Texas 77042

FILE: \\map\production\119416120\1020000\Prod\GIS\Project\MOX_Files\04252008_Sub Area_No4_Final.mxd
 DATE: 4/9/2008