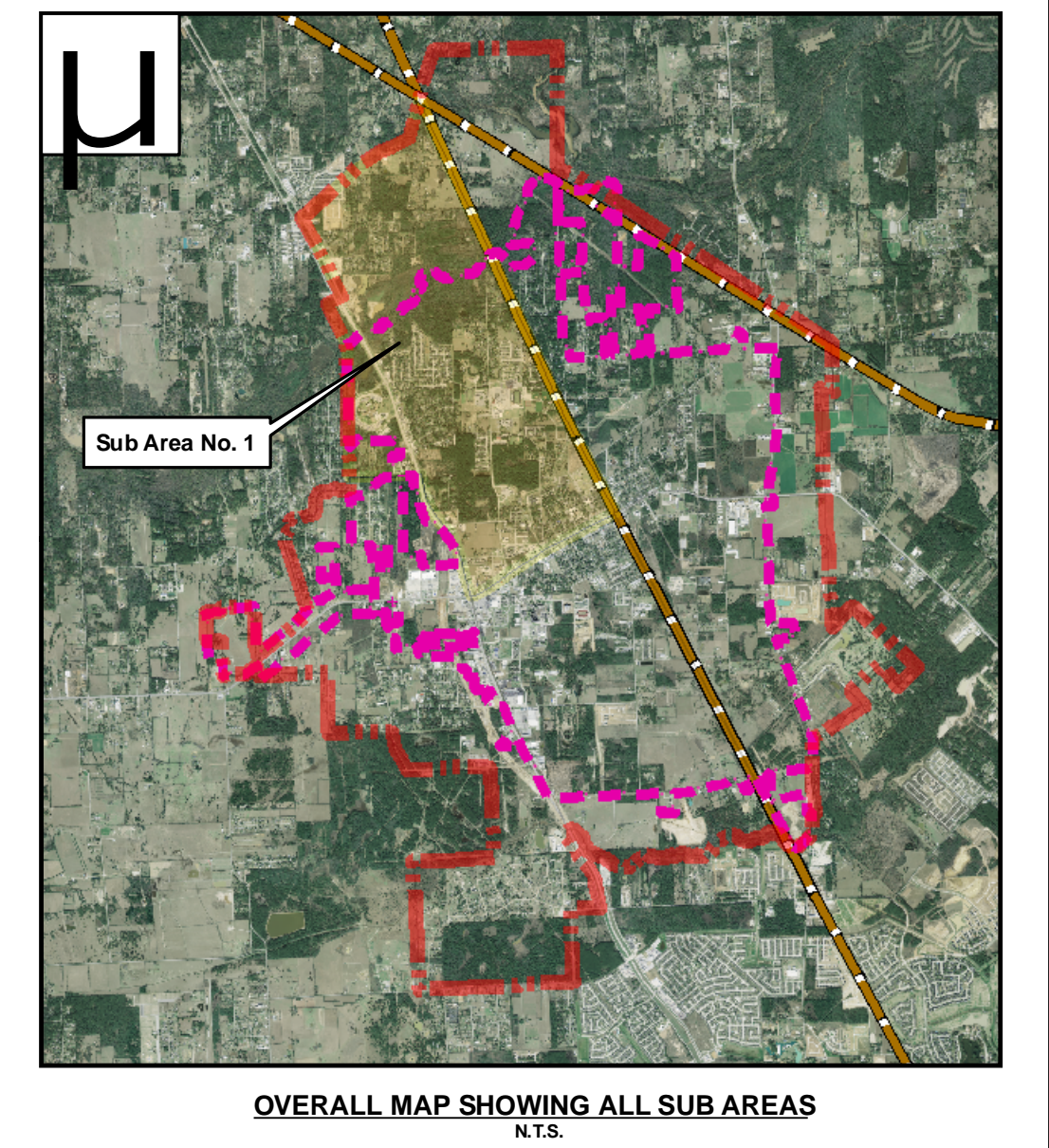
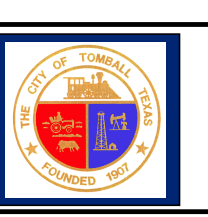


- LEGEND:**
- Tomball
 - Sub Area Boundary
 - 2008 Tomball City Boundary
 - Railroad
 - Creeks
 - Proposed Channel Corridor
 - Ultimate Land Use**
 - Commercial/Retail/Office
 - Residential
 - Industrial
 - Multi Family
 - Public
 - Drainage
 - Future Land Use, 2017**
 - Future Commercial/Retail/Office
 - Future Single Family
 - Future Industrial
 - Future Multi Family
 - Future Public
 - Existing Land Use, 2007**
 - Existing Commercial/Retail/Office
 - Existing Single Family
 - Existing Industrial
 - Existing Multi Family
 - Existing Public
 - Existing Drainage Easement
 - Existing Drainage Easement
- Aerial Flow: August 2006
- 500 250 0 500 Feet



**LAND USE MAP
SUB AREA NO. 1**

**CITY OF TOMBALL
MASTER PLAN 2007-2017
TOMBALL, TEXAS**



lan Lockwood, Andrews & Newnam, Inc.
A LEOP A DALEY COMPANY
2925 Briarpark Drive, Houston, Texas 77042

FILE: \\map\production\119416120162000\Prod\GIS\Project\MDX_Files\04252008_Sub_Area_No1_Final.mxd DATE: 4/9/2008