

**City of Tomball  
Memorandum**

Date: September 22, 2008  
To: Developers and Contractors  
From: Mark A. McClure, PE  
Director of Engineering and Planning  
City of Tomball  
Re: Storm Water Construction Requirements

The Texas Commission on Environmental Quality (TCEQ) storm water regulations presents two (2) options for construction activity permit applications. The first option is to submit an individual permit application to TCEQ. The second option is to file a notice of intent (NOI) to seek coverage under a general permit in accordance with the requirements of the TPDES Construction General Permit TXR150000. One of the major requirements of the Construction General Permit is that operator(s) of the construction activity prepare and implement a Storm Water Pollution Prevention Plan (SWP3) to reduce the pollutants in storm water discharges from the construction site. Guidance to prepare the SWP3 can be found in the Storm Water Management Handbook for Construction Activities, by the City of Houston, Harris County, and Harris County Flood Control District. The handbook is based on the requirements of the TPDES Construction General Permit. A link is provided on the City's website under Engineering & Planning, [http://cleanwaterways.org/downloads/professional/construction\\_handbook\\_full.pdf](http://cleanwaterways.org/downloads/professional/construction_handbook_full.pdf).

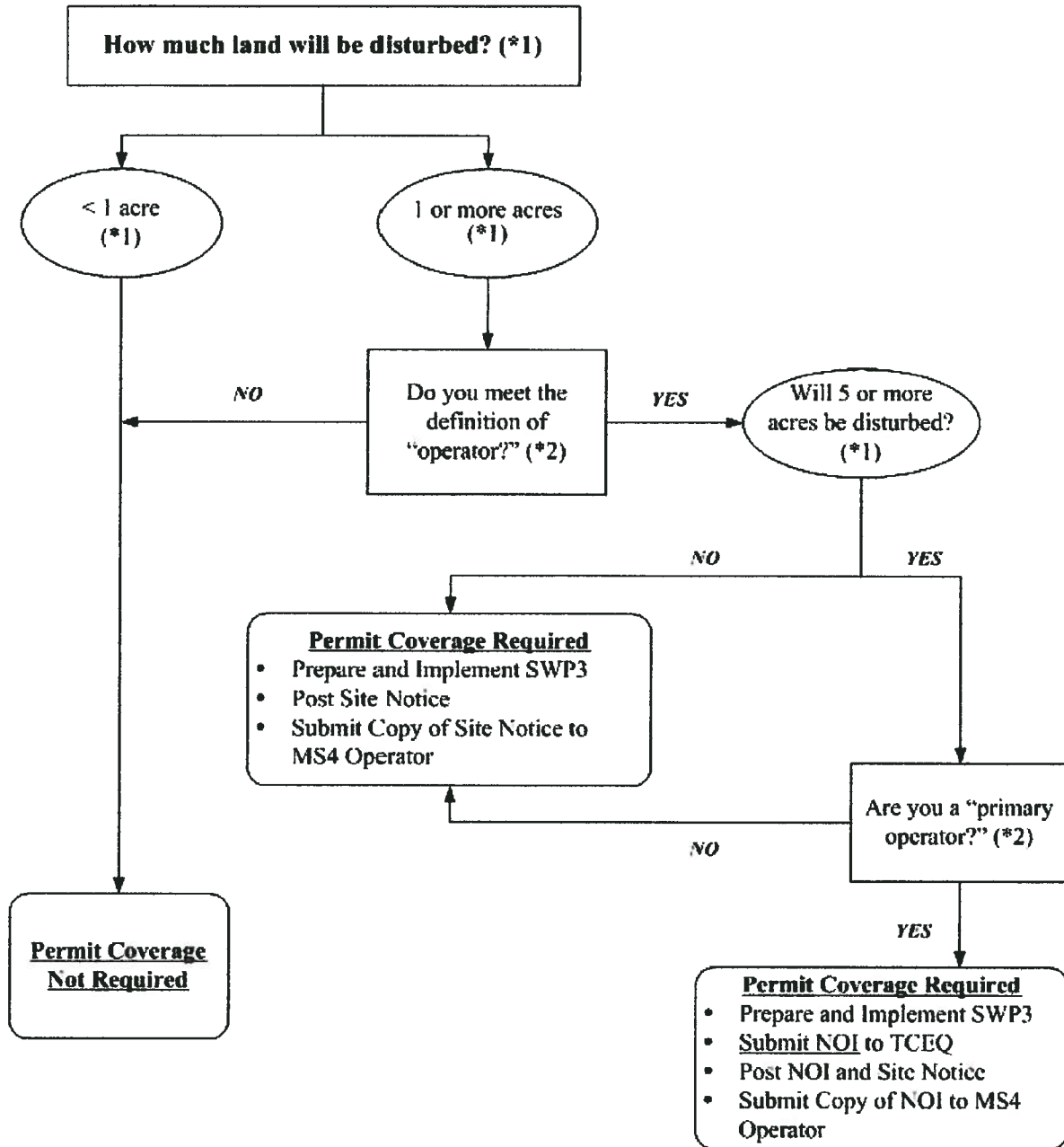
The TPDES Construction General Permit extends general permit coverage to small construction sites/activities disturbing from one acre to less than 5 acres. Small construction sites/activities are required to obtain permit coverage. Specific requirements for small construction sites/activities are provided in the TPDES Construction General Permit.

Attached is a flow chart on what the TDPEs Construction General Requirements are. In addition to TCEQ's requirements you must comply with all local and county requirements.

In addition, all new development and significant redevelopment must submit for a Storm Water Quality (SWQ) Permit from Harris County, if any portion of a project drains directly into a Municipal Separate Storm Sewer System owned by Harris County (i.e. roadside ditches) and/or the Harris County Flood Control District (HCFCD channels and ponds). Copies of the SWQ Permits, SWP3, Construction Site Notice, and Notice of Intent (NOI), if required, must be submitted to the City of Tomball as part of the permit process. All detention structures and features for storm water quality must also be included on the plans when submitted for review. The designer must verify facility ownership (i.e. channels, ditches, ponds, and roadways) prior to or during plan development.

**Part I. Flow Chart and Definitions**

**Section A. Flow Chart to Determine Whether Coverage is Required**



(\*1) To determine the size of the construction project, use the size of the entire area to be disturbed, and include the size of the larger common plan of development or sale, if the project is part of a larger project (refer to Part I.B., "Definitions," for an explanation of "larger common plan of development or sale").

(\*2) Refer to the definitions for "operator," "primary operator," and "secondary operator" in Part I., Section B. of this permit.