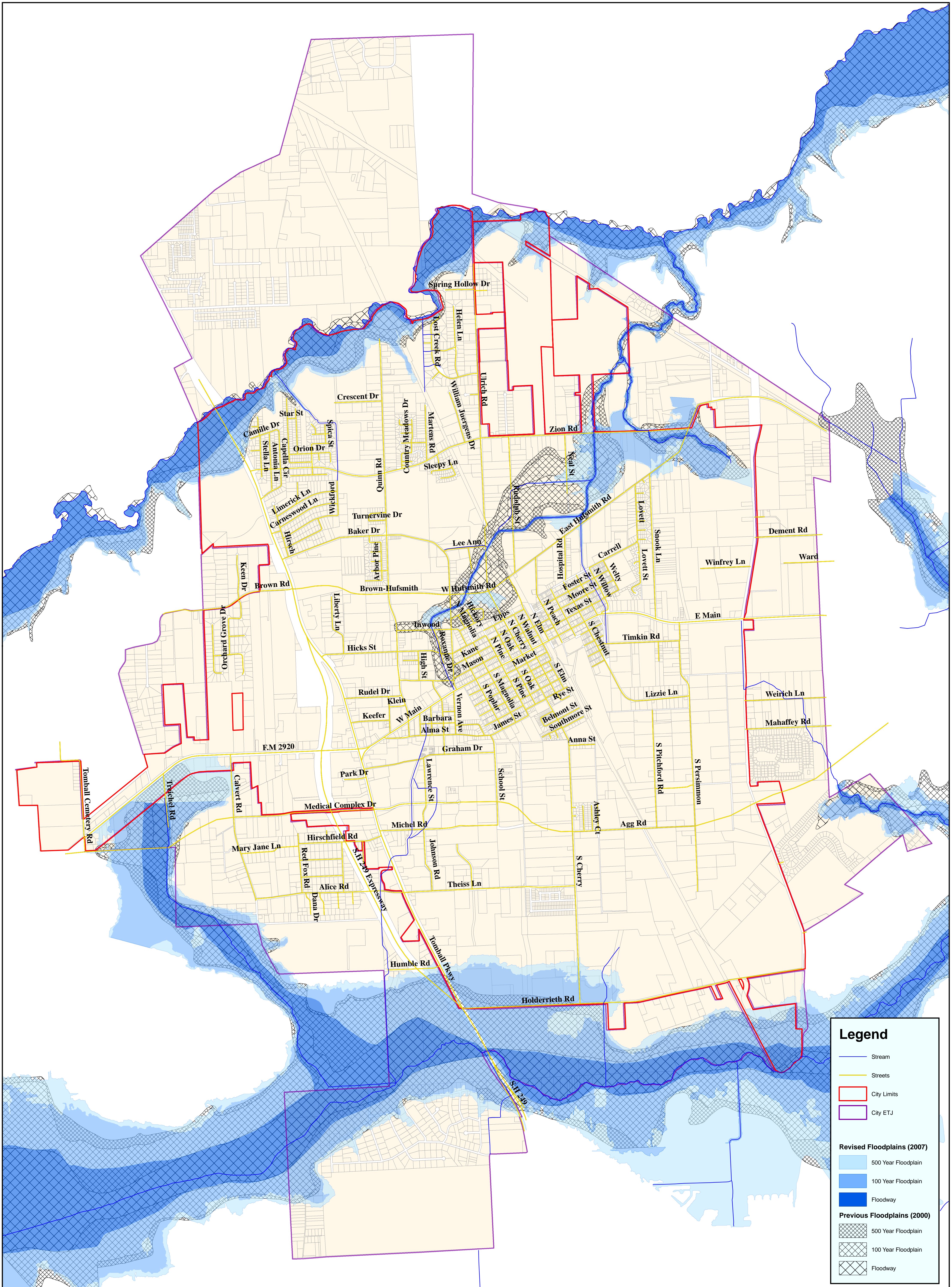


Revised FEMA Floodplain



Legend

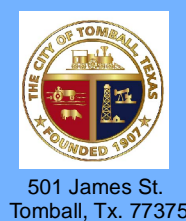
- Stream
- Streets
- City Limits
- City ETJ

Revised Floodplains (2007)

- 500 Year Floodplain
- 100 Year Floodplain
- Floodway

Previous Floodplains (2000)

- 500 Year Floodplain
- 100 Year Floodplain
- Floodway



This is not an official FEMA Flood Insurance Rate Map (FIRM). This is for information purposes only and allows the user the Revised Preliminary FEMA Floodplains.

The Revised FEMA Floodplain is effective as of June 18, 2007.



0 2,000 4,000 8,000 12,000 Feet