

# **BRAZORIA COUNTY**

## **2009 HURRICANE PREPAREDNESS GUIDE**

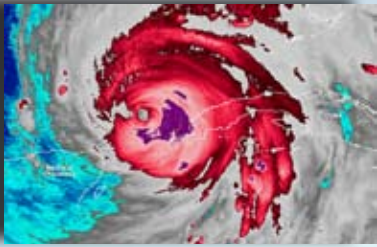
# **ARE YOU PREPARED?**



**211 • EVACUATION PLANS**

**EMERGENCY INFORMATION AND • COMMUNITY PLANNING**

THIS BOOKLET CONTAINS VITAL INFORMATION TO ASSIST YOU THROUGH HURRICANE SEASON. KEEP THIS GUIDE READILY AVAILABLE THROUGHOUT THE SEASON AND BY YOUR SIDE DURING AN EVACUATION.



*Dear Brazoria County Citizens,*

*Brazoria County and the cities in Brazoria County have joined together in a public awareness campaign on Hurricane Preparedness. We are providing this brochure to ensure that all residents in Brazoria County are prepared in the event of a weather emergency.*

*As Hurricane Ike has shown, hurricanes can cause massive property damage and loss of life. History teaches that a lack of hurricane awareness and preparation are common threads among all major hurricane disasters.*

*Preparedness is the key to protecting your family and property. Please don't have a false sense of security believing that "It won't happen to me." Don't be a casualty of our next hurricane.*

*By knowing your vulnerability and what actions you should take, you can reduce the effects of a hurricane disaster.*

*Make your plans now. By doing so, you will ensure that you and your family will survive any hurricane that may threaten our area.*

*Sincerely,*

*Brazoria County Emergency Managers*



# Table of Contents

## BRAZORIA COUNTY HURRICANE PREPAREDNESS GUIDE

### IF YOU NEED A RIDE OUT OF TOWN

211 Registry . . . . . 3  
 Evacuation HUBS in Brazoria County . . . . . 4

### IF YOU HAVE YOUR OWN TRANSPORTATION

Evacuation Plans . . . . . 5  
 Evacuation Zones . . . . . 6  
 Public Shelters . . . . . 7  
 Animal Evacuations . . . . . 7

### GETTING PREPARED

Prepare Your Home . . . . . 8  
 Prepare Your Vehicle . . . . . 8  
 Hurricane Hazards . . . . . 9  
 Family Disaster Check List . . . . . 10  
 Evacuating Livestock . . . . . 11  
 How Can I Help? . . . . . 12  
 Communication Information . . . . . 12

This booklet contains vital information to assist you through hurricane season. It is strongly recommended that you keep this guide readily available throughout the season and by your side during an evacuation.

**ARE YOU  
PREPARED?**  
**We're Here to Help.**



IF YOU NEED A RIDE OUT OF TOWN

**2-1-1 Registry**

**DIAL 2-1-1 TO REGISTER FOR A RIDE**

Brazoria County resident - If you have special health care or transportation needs, you need to make extra efforts to get ready for hurricane season. Remember, hurricane season officially begins June 1 and continues through November 30.

Operators answering the phones at 2-1-1 are prepared to help you register for transportation and special assistance now, before hurricane season begins.

**If you have special health care needs, register by dialing 2-1-1:** Gulf coast residents with special health care needs (including those who are disabled or medically fragile) who live in evacuation zones and do not have friends or family to help in an evacuation should register for a ride in advance by dialing 2-1-1. **The 2-1-1 registry must be dialed IN ADVANCE. Call 211 before a storm is in the Gulf.** This service is for people who cannot drive themselves or make transportation arrangements.

**If you need transportation, register with 2-1-1:** If you do not have a car or other vehicle, and you cannot get a ride with friends, neighbors or family, register IN ADVANCE for a ride by dialing 2-1-1. If those attempts fail, contact your local emergency coordinators office (numbers found on pages 13 & 14).

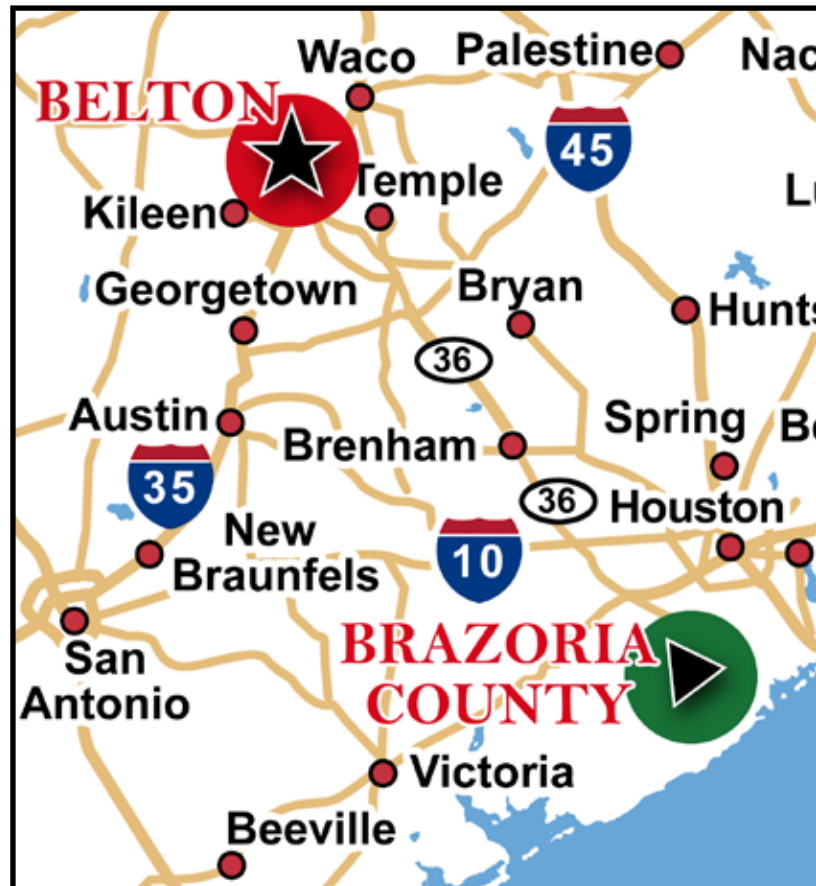
In the event of an evacuation, individuals who have registered with 2-1-1, will need to meet at an evacuation HUB.

To allow hearing impaired folks to register for 211 help before an event please email or text your contact info to: [211@brazoria-county.com](mailto:211@brazoria-county.com)



Dial 2-1-1

**Don't wait  
Register NOW!**



**2009 Hurricane Season is June 1 - November 30. PLAN TODAY!**



# IF YOU NEED A RIDE OUT OF TOWN

## Evacuation HUBS in Brazoria County

### WHAT IS A HUB?

A HUB is a meeting location for residents who:

- Need public transportation during an evacuation
- Registered with 2-1-1 for public transportation

At this location, residents will be checked in and bused to public shelters in Belton Texas. **FIREARMS ARE NOT PERMITTED.**

Brazoria County has been divided into two HUBS. **If you need public transportation during an evacuation, you will need to get to one of these HUBS\*.**

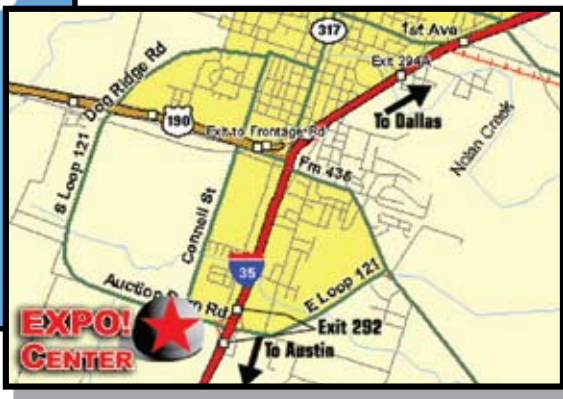
- |  |  |
|--|--|
| <p><b>1 PEARLAND</b><br/>Glenda Dawson High School<br/>4717 Bailey Road<br/>Pearland, TX</p> | <p><b>2 ANGLETON FAIRGROUNDS</b><br/>901 S Downing Rd<br/>Angleton, TX</p> |
|--|--|



**\* If you need assistance getting to one of these HUBS, locate your local emergency coordinators to find staging locations.**

**Evacuation Destination:**

**★ EXPO CENTER**  
301 West Loop 121  
Belton, Texas 76513



### WHAT SHOULD I BRING WITH ME?

- You **MUST** bring your driver's license or state issued picture ID.
- Medications for at least 10 days
- Toiletries, snacks, and 5 days worth of clothing
- No more than two pieces of luggage and one carry-on bag per person.
- Household pets (dog/cat) in a sturdy plastic or metal cage/transport device. (no reptiles or aggressive animals will be allowed).

### WHAT IS NOT ALLOWED IN A PUBLIC SHELTER?

Alcoholic beverages, weapons, and illegal drugs are not allowed in public shelters.

### PUBLIC TRANSPORTATION AND ANIMAL EVACUATIONS

If you are utilizing county transportation at a HUB location, there are several rules that must be followed. These rules are imposed to ensure the safety of everyone and will be enforced without exception. **HUB Coordinators have final say over all pet transports.**

- Only non aggressive household pets will be permitted. No reptiles or farm animals.
- Up to two pets per household will be allowed on the bus. If you feel you **MUST** take more than two pets, please contact your city's local emergency manager **BEFORE** an evacuation is called.
- All animals **MUST** be transported and housed in a sturdy plastic or metal cage/transport device. No cardboard or partly enclosed devices will be allowed.
- Animals must remain secured in the travel device at **ALL TIMES** while on the bus.
- All animals must have current shot records.
- Animal owners are responsible for supplying food and water for their animals.
- Please understand we are not liable for any losses or injuries your animal may sustain while being evacuated.

### WILL MY PET RIDE WITH ME?

As a general rule, pets will be transported with the owner. However, if a situation dictates, they may be transported in a separate vehicle.

# IF YOU HAVE YOUR OWN TRANSPORTATION

## Evacuation Plans

If you think you need to evacuate, leave as early as possible.

### HOW DO I KNOW WHEN TO EVACUATE?

Mandatory evacuation orders will come from your local officials. Evacuations will be based on zip codes. Please be prepared to leave immediately.

See pages 12 - 14 for specific information pertaining to your city's communication of recommended evacuations.

### SHOULD I EVACUATE?

Local officials will make mandatory evacuation decisions before a storm makes landfall. Hurricanes are extremely unpredictable and can become much more dangerous in a matter of hours. It is NOT safe to wait. **Plan to LEAVE EARLY.**

### WHERE SHOULD I GO?

You may evacuate to any city you choose. Brazoria County residents have been assigned Belton, Texas for **public shelters**. If you do not have hotel reservations or family you can stay with, you may evacuate to the public shelters. See map on page 3.

### WHAT ROUTE SHOULD I TAKE?

There are no mandatory routes you must take when evacuating from your city. In fact there are several different routes you may take. When weather is good, take your family on an outing to check routes and become familiar with roadways.

The State has designated evacuation routes: SH-36, SH-288, SH-6, I-45, SH-290, HWY-59. If you choose to take an alternate route, essential services such as food, fuel, etc. are not guaranteed.

Please understand that depending on the strength of the storm, contra-flow lanes might be open on SH-45, I-10, and SH-290 thirty-six (36) hours prior to the arrival of gail force winds. Plan your evacuation routes carefully, **(having more than one route planned)** realizing that contro-flow lanes have priority over all other routes.

**It is NOT safe to wait!**

### WHEN EVACUATING YOU SHOULD:

- Coordinate your departure with the people who will be traveling with you. Notify an out-of-area person of your evacuation plans.
- Make arrangements for your pets.
- Pack your disaster supplies kit into your vehicle.
- Secure your home.
- Double check your evacuation route and leave.



### I DON'T WANT TO EVACUATE!

Should you choose to stay, please remember there are **NO SHELTERS in Brazoria County**. There will be **NO SERVICES available to you (sewer, water, etc.)**. Hospitals will close, ambulances will not run, and police and fire cannot respond until the storm passes.

## When Should I Return?

- Just because you hear from a friend or neighbor that their house is OK, does not mean it is safe for you to return.
- Local emergency managers will utilize: (1)local media (2)Connect CTY and (3)websites to notify residents when its safe to return. If you do not have access to any of the above resources, contact your city's emergency management coordinator's office or the county's emergency manager's office **before returning**. This information can be found on pages 12- 14. As a last resort, if your local or county emergency managers office is unavailable, you may call Bell County at 254-933-5587

- Do not venture onto roads until you have been advised that they are passable and safe.





# IF YOU HAVE YOUR OWN TRANSPORTATION

## FUEL

- Keep your fuel tanks half full during hurricane season.
- Motorists should fill their tanks before evacuating.
- TxDOT has worked with the private sector to assure maximum-possible fuel availability during an evacuation.
- TxDOT courtesy vehicles will be patrolling major evacuation routes for stranded motorists.



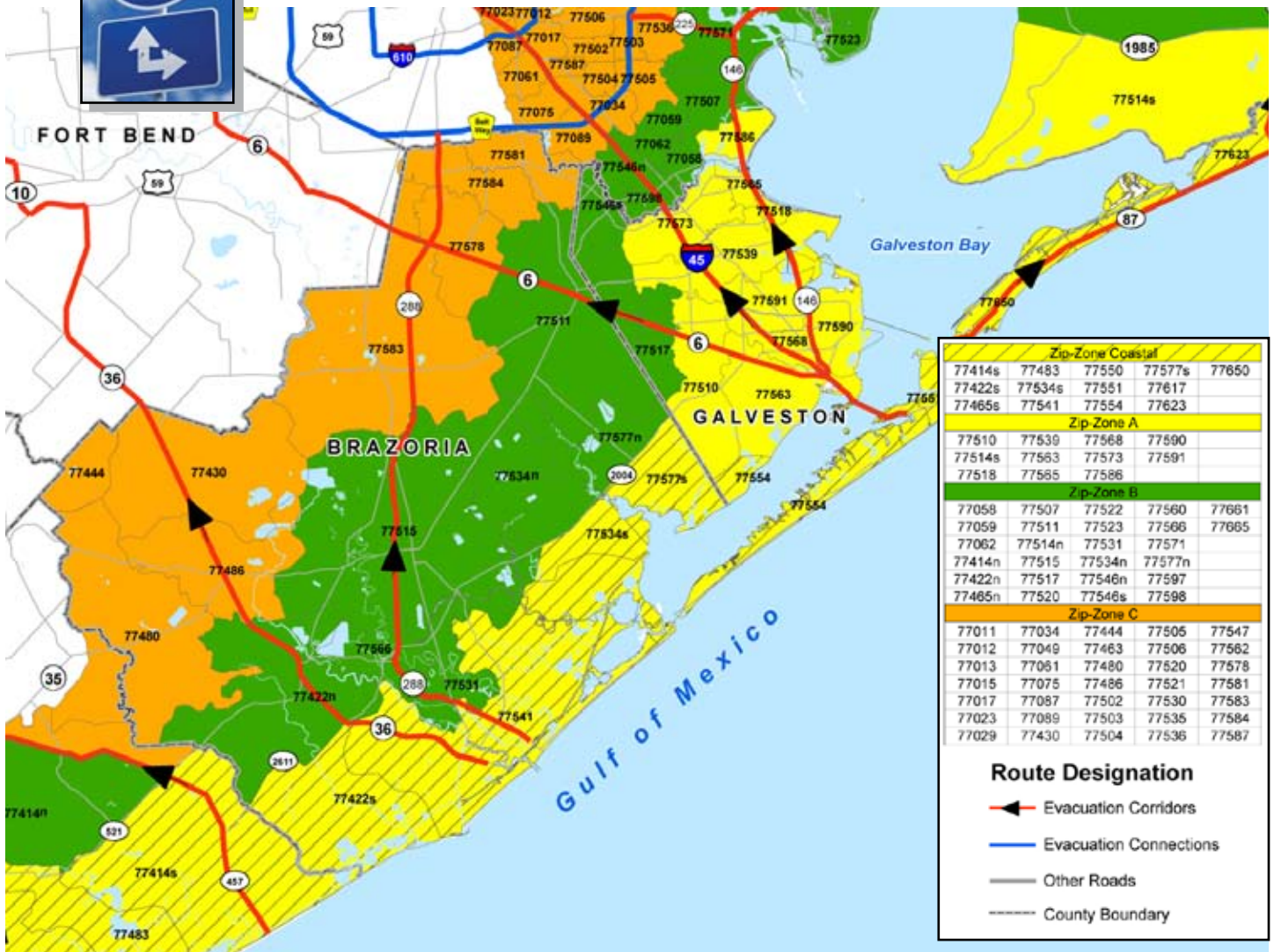
**Mandatory Evacuations will be based on zip codes. Be prepared to leave immediately as your zip code is called.**

## KEY TELEPHONE NUMBERS

- The number to call for ROAD CONDITIONS OR COURTESY VEHICLES on state highways is **1-800-452-9292**.
- If you have an emergency, call **9-1-1**.



# Evacuation Zones



## IF YOU HAVE YOUR OWN TRANSPORTATION

If you have your own ride out of town, but need a place to stay, you may go to the Expo Center in Belton, Texas. See page 3 for a map.

### Public Shelters

#### IF I PLAN ON GOING TO A PUBLIC SHELTER, WHAT ADDITIONAL ITEMS SHOULD I TAKE?

Public shelters are basic facilities that provide temporary housing for evacuees. Most shelters do not have beds or cots, so you will probably be sleeping on the floor. So pack as if you were going camping. Bring:

- Sleeping pads or air mattresses
- Blankets or a sleeping bag for each person
- Robe & shower shoes
- Books, cards, games and QUIET toys for children

#### WHAT IS NOT ALLOWED IN A PUBLIC SHELTER?

Alcoholic beverages, weapons, and illegal drugs are not allowed in public shelters.

**FIREARMS ARE NOT PERMITTED**

#### SHOULD I CARRY FOOD AND DRINKS IN MY CAR?

Stopping for food or drinks during a large-scale evacuation may significantly delay you in getting to your destination. Some restaurants and stores along hurricane routes may be closed and those that are open are likely to be very crowded. Additionally, once you leave the evacuation route to purchase food or drinks, it may be difficult to re-enter the flow of traffic.

#### WHAT CAN I DO TO HELP OTHERS?

Check on friends and neighbors to make sure they have transportation or to see if they need help in getting essential items together so they can be ready to evacuate. Assist them if you can. If you cannot, help them get in touch with the local emergency management office.

### Animal Evacuations

The inland shelter locations will be equipped to shelter most animals of all types. You may be restricted to the number and type of animals that will be sheltered. If you have questions, please contact your local emergency manager (page 13-14). As a general rule, pets will be sheltered separately, with the exception of service animals that must stay with their owners. All animals must be housed in a sturdy plastic or metal cage. All food/medication must be provided by owner.



DEAR PERSONS,  
IF I'M RIDING WITH YOU,  
PLEASE DON'T FORGET TO  
PACK MY... THANKS,

- Food, water
- Non-tippable food and water containers
- Leash, harness or carrier
- Records of vaccinations
- Medications



#### EVACUATING TIPS

- Keep your vehicle in good repair with at least a half a tank of fuel.
- Check on friends and neighbors who may have special needs.
- Prepare your disaster supplies kit NOW and take it with you when you evacuate. (see page 10 for check list)
- Secure your home quickly and evacuate when asked to do so.



## GETTING PREPARED

## Prepare Your Home

Here are some steps you can take to protect your property **BEFORE A STORM HITS**:

- Find out the elevation of your property and check floodplain maps.
- Check your insurance coverage. Most homeowner insurance policies do not cover flood damage.
- Learn about the National Flood Insurance Program.
- Find out if your home meets current building code requirements for high winds. Structures that meet current high-wind provisions have a better chance of surviving violent windstorms.
- Install commercial shutters or prepare 5/8 inch plywood panels for your windows.



- Garage doors are frequently the first feature in a home to fail. Reinforce garage doors so that they are able to withstand high winds.
- Assess your property to ensure that landscaping and trees do not become a wind hazard. Trim all dead wood, and weak branches or overhanging branches from all trees. Certain trees and bushes are vulnerable to high winds and any dead tree near a home is a hazard.
- Move outside items to safety, such as patio furniture, plants and grills.
- Put valuable documents in waterproof containers and take them with you when you evacuate.
- Turn off electricity at the main circuit breaker or fuse box to protect appliances from power surges and reduce the risk of live dangling wires after the storm.
- If the house is supplied with natural or propane gas, turn it off at the meter or tank.
- Remove perishable items from your refrigerator and freezer if you evacuate.
- Make a final walk-through inspection before closing the door.

## Prepare Your Vehicle

- Fill up with fuel before you leave town. It's smart to keep your tank at least half full during hurricane season.
- Check your vehicle's fluid levels and ensure there is adequate coolant in the radiator.
- Don't forget your tires. Check for proper air pressure because hot road surfaces are rough on tires. Be sure that your spare tire has air and that you have the proper equipment to change your tire. Ensure you have a jack and lug wrench in your vehicle and know where they are in the vehicle. Your owner's manual should have instructions for changing tires and flats.
- Make sure to carry water and non-perishable food; enough for you and your passengers in case you become stranded.
- If you are stranded, stay with your vehicles and use emergency flashers. Tie a white cloth on the antenna or door handle and raise the hood.
- Have a working flashlight and extra batteries in your vehicle.



# Evacuating Livestock

What livestock to evacuate is something one should give a lot of consideration. Hurricane Ike in 2008 delivered a storm surge that traveled inland approximately 14 miles, impacting 20,000 head of cattle, and killing 4,000 to 5,000 head of adult cows—an economic impact of \$14,000,000. Animals located on lands prone to flooding and storm surge should most definitely be evacuated. However, “evacuating” doesn’t necessarily mean moving livestock (goats, sheep, cattle, horses, etc.) out of the county. Many times livestock can be evacuated to higher elevations out of flood plains north of Hwy 35. Whether livestock are moved to safer grounds within the county, or if they’re evacuated out of the county, there are things to consider in either scenario. Moving cattle to higher ground is only as good as you can keep them there. Cattle will travel with the wind. Good fences or strong cattle pens are necessary to keep cattle from traveling with the wind and into storm surge or flooded waterways.

**“Never stall horses in barns during a hurricane.”**

When hauling livestock in a hurricane evacuation of any size, animals should be evacuated no less than 72 hours before a storm makes landfall.

## Evacuating - Where to Go?

If you have friends or family who have a place to board your livestock, that is your best choice. Public shelters are temporary, lasting maybe a couple of days. After the storm passes, there may not be fences, water, etc. for your livestock once you return home. When evacuating it’s best to plan for long term, rather than a couple of days. Our assigned public shelter at the Bell County Expo in Belton, Texas can accommodate shelter for 150 cattle, 179 horses, and 300 head of sheep, swine and goats combined. The Expo is located on I-35 at exit #292 in Belton, Texas. When evacuating, as a courtesy call, contact Dirk Aaron at (254) 933-5305 before leaving home to let Bell County know you’re coming. Other shelters for high value livestock are available throughout the state, but contact information on those sites isn’t released until 120 to 72 hours before a storm makes landfall. As this information is received it will be posted on the Brazoria County website at [www.brazoria-county.com](http://www.brazoria-county.com) and at the Emergency Management office at (979) 864-1064. A list of livestock shelters is also available to the public during evacuation by dialing 2-1-1. Keep in mind that public shelters provide only shelter and water. Feed and hay are the owners responsibility. **Public shelters require all equine to have current vaccinations and coggins test paperwork.**

## Identify Your Livestock

Whether livestock remain in the county, or are evacuated out of the path of the storm, livestock should be identified. Nothing is better than a permanent hot iron or freeze brand that is properly registered under your name at the County Clerk’s Office. Below is a picture of an evacuee’s telephone number engraved with clippers into the hair of a horse’s neck. A good idea even if the horse



is evacuated to a public shelter in another county. It’s only temporary, and the hair will grow back!

## Feed, Water, & Supplies

Hay and water are the most important items for livestock in both hurricane evacuation and recovery. Carry sufficient water with you on the livestock trailer - you might get caught in traffic on the evacuation route. It is recommended to carry a three day supply of water/animal if you’re evacuating livestock out of the county. Take with you records that will validate ownership of livestock prior to the storm. This includes but is not limited to receipts from livestock bought and sold, veterinary records, etc. This proof of ownership is necessary if you must apply for livestock indemnity payments with USDA-Farm Services Agency.

Daily Water Intake	
Animal	Gallons Water
Horses	18
Cattle	23
Swine	6
Sheep/Goat	3

## Livestock After the Storm

Before evacuating, plan for the recovery phase by having a least one week of hay and water supply per horse or cow ~150 gallons of water/animal/week. You may want to fill storage tanks, water troughs, or have a generator available to run water wells. Before bringing livestock home, assess your property for damages. Is water available? Did pastures flood from storm surge? Will grazing be sustained? Did fences survived the storm? If you have any questions, or know of livestock in need of assistance after the storm passes, contact the Brazoria County Emergency Management Office at (979) 864-1064 and ask for the Animals/Natural Resources Desk. Agriculture professionals will be on staff at the EOC to handle the livestock recovery effort.



# Family Disaster Check List

## ESSENTIALS:

- This booklet
- Battery-operated radio
- Flashlight
- Extra Batteries
- First Aid Kit (one for your home and one for each car)

**- Do not include candles. Candles cause more fires after a disaster than anything else.**

## WATER:

- 3 gallons per person, minimum, in a food-grade, plastic container
- Additional water for sanitation

## FOOD:

- Minimum 3-day supply of non-perishable food that requires no refrigeration or preparation and little or no water
- Dry cereal
- Peanut butter
- Canned fruits
- Canned vegetables
- Canned Juice
- Ready-to-eat canned meats
- Ready-to-eat soups (not concentrated)
- Quick energy snacks, graham crackers

## SANITATION:

- Disinfectant
- Household chlorine bleach
- Soap, liquid detergent
- Toilet paper, towelettes, paper towels
- Personal hygiene items
- Cloth towels (at least 3)
- Feminine supplies
- Plastic bucket with tight lid
- Plastic garbage bags, ties (for personal sanitation use)

## CLOTHING & BEDDING:

- Plastic garbage bags, ties
- Sunglasses
- Rain gear
- Sturdy shoes or work boots
- Blankets or sleeping bags
- Complete change of clothing and footwear per person

## TOOLS AND SUPPLIES

- Whistle
- Aluminum Foil
- Crowbar
- Compass
- Paper, Pencil
- Plastic sheeting
- Medicine dropper
- Needles, thread
- Signal Flare
- Matches in a waterproof container
- Assorted nails, wood screws
- Pliers, screwdriver, hammer
- Plastic storage containers
- Heavy cotton or hemp rope
- Cash, traveler's checks, change
- Map of the area
- Non-electric can opener, utility knife
- Cell phone with charger
- Mess kits, or paper cups, plates and plastic utensils
- Tape, duct tape and plumber's tape or strap iron
- Patch kit and can of seal-in-air for tires
- Shut off wrench, to turn off household gas & water

## FOR BABY:

- Formula
- Diapers
- Bottles
- Medication
- Powdered milk
- Baby food

## FOR PETS:

- Food, water
- Non-tippable food and water containers
- Leash, harness or carrier
- Records of vaccinations
- Pet medications

## IMPORTANT DOCUMENTS:

- Important telephone numbers
- Record of bank account numbers
- Family records (birth, marriage, death certificates)
- Inventory of household valuables
- Copy of will, insurance policies, contracts, deeds, stock and bonds
- Records of credit card account numbers and companies
- Copy of passport, social security cards, and immunization records

## FAMILY MEDICAL NEEDS:

- Insulin
- Prescription drugs
- Heart and high blood pressure needs
- Denture needs
- Extra eye glasses
- Contact lenses and supplies

## ENTERTAINMENT:

- Games & books

## YOU MAY WANT TO INCLUDE:

Family photos, jewelry and select irreplaceable personal items.

### Keep a small bag packed including a minimum of these items:

- Personal sized bottled water (one for each family member - don't forget your pets)
- Dry snacks
- One complete change of clothing and footwear per person
- Cash, traveler's checks and/or Credit cards, enough for food gas and lodging.
- Important documents
- Medications with original prescription containers
- Maps (evacuation routes and shelters)
- For Baby: formula, diapers, bottles, medication and powdered milk.
- For Pets: food, leash, harness, carrier, non-tippable food and water containers
- It's a good idea to have some travel games or books for the kids



**Make sure you have your vehicles' oil and fuel levels checked regularly during hurricane season!**

# Important Information

**Employer Name:** \_\_\_\_\_

Address: \_\_\_\_\_

Phone Number: \_\_\_\_\_

**Home Insurance Company:** \_\_\_\_\_

Address: \_\_\_\_\_

Phone Number: \_\_\_\_\_

Policy Number: \_\_\_\_\_

**Auto Insurance Company:** \_\_\_\_\_

Address: \_\_\_\_\_

Phone Number: \_\_\_\_\_

Policy Number: \_\_\_\_\_

**Other Insurance Company:** \_\_\_\_\_

Address: \_\_\_\_\_

Phone Number: \_\_\_\_\_

Policy Number: \_\_\_\_\_

**Family Doctor:** \_\_\_\_\_

Address: \_\_\_\_\_

Phone Number: \_\_\_\_\_

**Pediatrician:** \_\_\_\_\_

Address: \_\_\_\_\_

Phone Number: \_\_\_\_\_

**School/Daycare:** \_\_\_\_\_

Address: \_\_\_\_\_

Phone Number: \_\_\_\_\_

Contact: \_\_\_\_\_

**Bank Name:** \_\_\_\_\_

Address: \_\_\_\_\_

Phone Number: \_\_\_\_\_

Account Number(s): \_\_\_\_\_

**Credit Card Company:** \_\_\_\_\_

Address: \_\_\_\_\_

Phone Number: \_\_\_\_\_

Credit Card Number: \_\_\_\_\_

**Credit Card Company:** \_\_\_\_\_

Address: \_\_\_\_\_

Phone Number: \_\_\_\_\_

Credit Card Number: \_\_\_\_\_

**Pharmacy Name:** \_\_\_\_\_

Address: \_\_\_\_\_

Phone Number: \_\_\_\_\_

Prescription Number(s): \_\_\_\_\_

**Out of Town Contact:** \_\_\_\_\_

Phone Number: \_\_\_\_\_

**Important Numbers:** \_\_\_\_\_

**Important Numbers:** \_\_\_\_\_

**Important Numbers:** \_\_\_\_\_

**Important Numbers:** \_\_\_\_\_

\_\_\_\_\_

\_\_\_\_\_

\_\_\_\_\_



# HOW CAN I HELP?

## BRAZORIA COUNTY CITIZEN CORPS

In large emergencies, first responders in our community can be overwhelmed quickly. Citizens on scene may need to take action to help save lives.

Citizen Corps provides training that will allow you to protect yourself, your family, and your neighbors.

The Brazoria County Citizen Corps has several key missions:

- Initial Neighborhood response
- Staffing Evacuation Hubs for an evacuation
- Performing Preliminary Damage Assessments
- Staffing the Emergency Management Call Center
- Assisting with distribution of food, water, and ice during emergencies
- Assist with staffing of shelters during disasters

ALL TRAINING IS FREE

**Positions for everyone! Great for groups and organizations! Sign up today!**

See our calendar at [www.homelandpreparedness.org](http://www.homelandpreparedness.org) or contact Homeland Preparedness Project at [info@homelandpreparedness.org](mailto:info@homelandpreparedness.org) or call 979-864-1646

## PEARLAND AREA CITIZENS CORPS (PACC)



Local emergency management agencies along with fire, police and EMS may not be able to meet all the demands for a community wide event. Factors such as the number of evacuees, victims, communication failures, and road blockages will challenge our community. People will have to rely on each other for help and volunteers will be needed for pre and post incident functions all year round.

PACC has openings many programs for citizens that live in northern Brazoria and surrounding counties.

For more information, please contact Buck Stevens at [buckstevens@gmail.com](mailto:buckstevens@gmail.com) or 281-997-9777 or see our website at [www.pearlandcc.org](http://www.pearlandcc.org)



## Public Call and Notification System

Many cities in Brazoria County utilize a public call and notification system. You can have messages sent directly to your cell phone. Please check your city to inquire if this service is available in your community.



This booklet contains vital information to assist you through hurricane season. It is strongly recommended that you keep this guide readily available throughout the season and by your side during an evacuation.

The most up to date information available is provided by your local city and county emergency management coordinators.

These are the lines of communication and your guide to emergency information and community planning. Call your local information providers listed on the following pages if you have questions regarding hurricane preparedness.

Please contact your city's emergency management coordinator's office or the county's emergency manager's office with questions or concerns. These numbers can be found below and on pages 13 & 14.

BRAZORIA COUNTY

### BRAZORIA COUNTY

Emergency Management  
[eocstatus@brazoria-county.com](mailto:eocstatus@brazoria-county.com)  
[www.brazoria-county.com](http://www.brazoria-county.com)

Doc Adams  
 Emergency Manager  
 24 Hour Hotline. . . . . 979-864-1064  
 . . . . . 979-388-1064  
 . . . . . 979-756-1064

BELL COUNTY

### BELL COUNTY

254-933-5587

FEMA

### FEMA

1-800-621-FEMA (3362)

RED CROSS

### RED CROSS

1-800-RED-CROSS (733-2767)

UNITED WAY

### UNITED WAY

1-800-971-6677

SALVATION ARMY

### SALVATION ARMY

1-979-233-5420

COUNTY AND CITY COMMUNICATION INFORMATION

ALVIN

ALVIN

Terry Lucas
Emergency Manager . . . . . 281-388-4370
City Hall . . . . . 281-388-4200
Public Works. . . . . 281-388-4325
City Manager’s Office . . . . . 281-388-4230
Mayor’s Office . . . . . 281-388-4275
Cable Access Channel . . . . . Channel 16
Website: www.alvin.tx.citygovt.org
www.alvinpolice.com
Alvin ISD. . . . . 281-331-2320
KACC RADIO 89.7

ANGLETON

ANGLETON

Mike Jones
Emergency Manager . . . . . 979-849-2383
City Hall . . . . . 979-849-4364
City Manager’s Office . . . . . 979-849-4364
Mayor’s Office . . . . . 979-849-4364
Fire . . . . . 979-849-1265
Cable Access Channel . . . . . Channel 3 & 4
Website: www.angleton.tx.us
www.angletonpd.net
Angleton ISD . . . . . 979-849-8594

BRAZORIA

BRAZORIA

Marcus Rabren
Emergency Manager . . . . . 979-798-8002
City Hall . . . . . 979-798-2489
Teresa Borders
City Manager . . . . . 979-798-2489
24 hr. Emergency Info. Line . . . . . 979-798-4636

BROOKSIDE

BROOKSIDE

Buck Stevens
Emergency Manager . . . . . 281-546-9667
Denise Ford, Mayor
City Hall . . . . . 281-485-4844
Ray Trevino
Police Chief . . . . . 281-850-0219
Craig Bailey
Fire Chief . . . . . 281-485-3088

CLUTE

CLUTE

Mark Wicker
Emergency Manager . . . . . 979-265-6194
Police Department...24 Hr Info. . . 979-265-6194
Clute City Hall. . . . . 979-265-2541
Kyle McCain
City Manager . . . . . 979-265-2541
Website: www.ci.clute.tx.us
Brazosport ISD . . . . . 979-730-7000

DANBURY

DANBURY

City Hall/Police Department . . . . 979-922-1551
Vince Hatthorn
Emergency Manager . . . . . Ext.3
Rodger Thomas, Utility Department . . . . Ext.2
Theresa Farley, Animal Control . . . . . Ext.2
Kyle Webster
Fire Chief . . . . . 979-922-1176
Police Dispatch. . . . . 979-849-2441
Danbury ISD . . . . . 979-922-1218

FREEPORT

FREEPORT

John Stanford
Emergency Manager . . . . . 979-233-5669
(Recorded Message)
City Hall . . . . . 979-233-3526
Police . . . . . 979-239-1211
Larry Mc Donald, Mayor
Gary Beverly, City Manager
Website: www.freeport.tx.us
Brazosport ISD . . . . . 979-730-7000

JONES CREEK

JONES CREEK

William Tidwell
Emergency Manager . . . . . 979-292-6393
Howard “Bubba” Rape
Marshal. . . . . 979-233-3091
Police Department . . . . . 979-233-3091
City Hall . . . . . 979-233-2700



COUNTY AND CITY COMMUNICATION INFORMATION

LAKE JACKSON

LAKE JACKSON

William Yenne  
Emergency Manager . . . . . 979-415-2500  
City Hall . . . . . 979-415-2400  
Police Department . . . . . 979-415-2700  
Website: [www.lake-jackson-tx.gov](http://www.lake-jackson-tx.gov)  
Cable Access Channel . . . . . Channel 16  
Brazosport ISD . . . . . 979-730-7000  
Website: [www.brazosportisd.net](http://www.brazosportisd.net)

LIVERPOOL

LIVERPOOL

Tommy Grupe  
Emergency Manager . . . . . 281-581-2233  
Judy Dunbar  
City Secretary . . . . . 281-581-2233  
City Hall . . . . . 281-581-2233  
Myles Hopkins  
Police Chief . . . . . 281-393-1381  
Police Dispatch . . . . . 281-331-9000

MANVEL

MANVEL

David Smith  
Emergency Manager . . . [eoc@cityofmanvel.com](mailto:eoc@cityofmanvel.com)  
Delores Martin, Mayor  
City Hall . . . . . 281-489-0630  
Ralph Garcia, Police Chief  
Police Department . . . . . 281-489-1212  
Cooper Lumsden, EMS . . . . . 281-489-6144  
Steve DeBello, Fire Chief  
Fire Department . . . . . 281-692-0279  
Website: [www.cityofmanvel.com](http://www.cityofmanvel.com)

OYSTER CREEK

OYSTER CREEK

Sgt. Rick Hempel  
Emergency Manager . . . . . 979-233-8481  
Chief Tim Bradberry  
Police Department . . . . . 979-233-8481  
Toby Guenter  
Public Works . . . . . 979-233-0243  
C. Louis Guidry, Mayor  
City Hall . . . . . 979-233-0243  
Chief Lonnie Carr, Jr.  
Fire Department . . . . . 979-233-2630

PEARLAND

PEARLAND

Roland Garcia  
Emergency Manager . . . . . 281-652-1954  
City Hall . . . . . 281-652-1600  
Tom Reid, Mayor  
Bill Eisen, City Manager  
Police Department . . . . . 281-652-1100  
Cable Access Channel . . . . . Channel 16  
Website: [www.cityofpearland.com](http://www.cityofpearland.com) OR [cityofpearland.org](http://cityofpearland.org)

QUINTANA

QUINTANA

(Mon. - Fri. 8 a.m.- 4 p.m.) . . . . . 979-233-0848  
Jerry Masters **After Hours**  
Emergency Manager . . . . . 979-233-1314  
cell . . . . . 979-236-6081  
Wally Neely, Mayor Pro Tem . . . . . 979-236-3653  
J.O. Morgan, Mayor . . . . . 979-236-3938

RICHWOOD

RICHWOOD

Glenn Patton  
Emergency Manager . . . . . 979-265-8157  
City Hall . . . . . 979-265-2082  
Website: <http://richwood.govoffice.com>

SURFSIDE

SURFSIDE

Chief William R. Smith . . . . . 979-239-1151  
Larry Davidson, Mayor . . . . . 979-239-1151  
City Secretary's Office . . . . . 979-233-1531  
Website: [www.surfside.org](http://www.surfside.org)

SWEENEY

SWEENEY

Devin Lemon, Emergency Manager 979-548-0697  
Cindy King  
Asst. Emergency Manager . . . . . 979-548-3325  
Tim Moss  
City Manager . . . . . 979-548-3321  
Information Line . . . . . 979-548-3330  
After Hours/Emergency Line . . . . . 979-548-3111

WEST COLUMBIA

WEST COLUMBIA

Chief Michael Palmer  
Emergency Manager . . . . . 979-345-5121  
EOC . . . . . 979-345-7238  
Debbie Sutherland, City Manager  
City Hall . . . . . 979-345-3123  
Susan Neel  
CEMS Director . . . . . 979-345-2390  
Website: [westcolumbiatx.org](http://westcolumbiatx.org)  
PD Website: [www.westcolumbiapolice.org](http://www.westcolumbiapolice.org)

## NAMING THE STORM

Since 1953, Atlantic tropical storms have been named from lists originated by the National Hurricane Center. They are now maintained and updated by an international committee of the World Meteorological Organization (WMO). The original name lists featured only women's names. In 1979, men's names were introduced and they alternate with the women's names. Six lists are used in rotation. Thus, the 2005 list will be used again in 2011.

The only time that there is a change in the list is if a storm is so deadly or costly that the future use of its name on a different storm would be inappropriate for reasons of sensitivity. If that occurs, then at an annual meeting by the WMO committee (called primarily to discuss many other issues) the offending name is stricken from the list and another name is selected to replace it.

In the event that more than 21 named tropical cyclones occur in the Atlantic basin in a season, additional storms will take names from the Greek alphabet: Alpha, Beta, Gamma, Delta, and so on.

Here are the Atlantic names to be used during the 2009 Hurricane Season:

Ana	Larry
Bill	Mindy
Claudette	Nicholas
Danny	Odette
Erika	Peter
Fred	Rose
Grace	Sam
Henri	Teresa
Ida	Victor
Joaquin	Wanda
Kate	

**HURRICANE HAZARDS** come in many forms...  
be aware of all types of hurricane hazards and **PREPARE YOURSELF!**



**STORM SURGE**



**TORNADOES**



**FLOODING**



**HIGH WINDS**