



# Austin Nature & Science Center

## *Natural Selections*

**Fall-Spring  
2009-2010**



# One Day Camps

## Kids Day Off Camps & Youth Adventure Days

Looking for educational activities for your child on school holidays? ANSC provides fun, educational and safe activities for children ages 5-11. Programs begin at 8:00 AM and children are busy and having fun until 5:00 PM. Pack a lunch, a water bottle and two healthy snacks. Participants should wear weather appropriate, comfortable clothes & shoes that can get dirty and damp. **Pre-registration Required!** See the Parent's Guide to Camp for more details.

*Camp activities subject to change due to inclement weather.*

## *Kids Day Off Camp*

Ages: 5-7 years old	Time: 8:00 AM-5:00 PM
Fee: \$40/day	Min/Max: 6/12 per group
Pick-up & Drop-off: ANSC Headquarters	

Join us **October 19th** for “**Change is in the Air**”. Come with us as we search for evidence of the changing seasons. Explore Zilker Preserve looking for signs of fall, examining trees and checking for leaves turning autumn colors. Use a thermometer to test the temperature and chart the changes throughout the day.

**January 18th** explore “**Hibernation Hideaways**”. Hike on the Zilker Nature Preserve and look at the many types of homes animals build & use. Build your own cozy hideaway. Meet some of the ANSC resident animals up close. Participate in experiments illustrating how animals keep warm in the winter.

Learn about “**Green Gardening**” on **February 12th**. Discover how you can start your own garden and grow yummy vegetables. Make wildflower seed balls to plant in your yard. Meet every gardener’s friend, such as ladybugs & earthworms.



**Inside this issue:**

- Kids Day Off Camp 2
- Youth Adventure Days 3
- Halloween Howl 4
- Deep Down Underground 5
- Winter Break Camp 6
- Spring Break Camp 7
- Important Summer Dates 7
- Family Fun Nights 8
- Green Tips for Kids 8
- Birthday Parties 9
- Big & Little Adventures: Preschool Mornings 11
- Naturalist Workshop & Trade Counter 12
- Wildlife News 13
- Wildlife Austin 14
- Splash!-Sheffield Education Center 15
- Kids Corner Game Page 16
- Zilker Nature Preserve 17
- Kids & Critters Club Membership Application 17
- Registration Information 18
- Program Registration Form 19
- ANSC Information Back Cover

# Youth Adventure Days

All equipment and transportation provided!

Ages: 8-11 years old	Time: 8:00 AM-5:00 PM
Fee: \$40/day	Min/Max: 6/12 per group
Pick-up & Drop-off: ANSC Headquarters	

Why stay home today when you could go on an adventure? Join us **October 19th** for a memorable adventure on the water. Go **Kayaking** on Lady Bird Lake and spot the animals that depend on the waterway. Explore the exciting aquatic ecosystem that provides a habitat for fish, turtles and other wildlife.

Get dirty **January 18th** as we explore the underground adventure of **Caving**. Crawl through Whirlpool Cave and learn about the unique system of caves in Central Texas. Discover how caves relate to the Edwards Aquifer and Barton Springs.

Do you enjoy climbing? Why not go **Rock Climbing** with us on **February 12th**. Take an exciting trip to the Greenbelt in Gus Fruh Park where each child will go through ground school and then have an opportunity to climb. This trip provides opportunities for beginners and experienced climbers. Come join the fun!



## Don't Miss Out on the FUN!!!

### Are you interested in Adventure Activities?

Can't join us during Youth Adventure Days? Perhaps you're busy that day. Maybe you're not the right age. Perchance you think it would make a great family outing.

Don't fret! ANSC has many opportunities for people 8 years old and above to join the adventure.

Check out **Deep Down Underground** (pg. 5), **Family Fun Nights** (pg. 8) or book an **Adventure Birthday** (pg. 9) and bring your friends and family.



# Halloween Howl

October 24th, 2009  
5:00 PM—9:00 PM



- Hike by Moonlight
- Play with Slime
- Meet Nocturnal Hunters
- Encounter a Bat
- Visit the Planetarium
- Experiment in a Mad Scientist Lab
- Touch a Hissing Cockroach
- Learn about Lizards & Snakes
- Investigate Bones & Skulls
- Drink Hot Cocoa & much, much S'more!

Perfect for children of all ages.  
Costumes Encouraged!!!  
\$3.00 for children under 14  
\$5.00 for adults  
Lots to see & do!!!

ANSC's Sheffield Education Center / *Splash!* Exhibit

Is proud to present:

# Deep Down Underground

Learn about Austin's unique cave & aquifer system that is just beneath our feet.

November 7th, 2009

10:00 am to 3:00 pm

Sheffield Education Center  
(adjacent to the Barton Springs Pool)  
2201 Barton Springs Road

## Free Fun Family Activities:

Learn Cave Mapping

Encounter a Bat

Paint a Pictograph

See Barton Springs Salamanders

Investigate Cave Geology

Explore the Water Cycle

## Visit a Wild Cave!!!

Saturday, November 7th, 2009

\$18/per person

Pre-registration Required

10:00 AM-12:30 PM

1:30 PM- 4:00 PM

Space is limited so Sign Up Today!

Participants must be at least 8 years old.



## Winter Break Camp 2009—2010

Join us this December & January for Winter Break Camp. Plan to have fun no matter what the weather brings. Come along as we learn about astronomy, chemistry, geology, ecology and zoology. Enroll in your favorite camp or sign up for several days. Bundle up (wear comfortable, weather appropriate clothes & shoes that can get dirty &/or damp) & get ready for adventure. Make sure to bring a healthy lunch, two snacks & a water bottle each day.

**Ages:** 5-7 & 8-11 years olds

**Fee:** \$40/day

**Time:** 8:00 AM-5:00 PM

**Min/Max:** 6/12 per group

**Pick-up & Drop-off:** ANSC Headquarters



### **Itsy Bitsy Friends**

Small creatures are very important to the ecosystem. Investigate tiny insects and little-bitty sprouts of grass with hand lenses.

### **Art in Nature**

Express yourself naturally. Experience the beauty nature has created while hiking on the Zilker Preserve and visiting Pease Park. Create art using inspiration and tools from nature.

### **Polar Regions**

What is a tundra & who lives in Antarctica? Learn about the world of penguins & polar bears with experiments using ice. Learn how animals adapt to survive in this extreme habitat.

### **Adventures in Archeology**

Discover how ancient civilizations used the barter system, made their own tools and shelters. Make baskets and pottery like indigenous Texan cultures.

### **Slippery & Scaly**

Become a young herpetologist as we learn about differences and similarities between amphibians and reptiles. Meet a snake, touch a turtle and learn how to tell frogs and toads apart.

### **Animals in Winter / Animals All Around Survivor 101**

Ever wondered where all the birds go in the winter? What do squirrels do with all of those nuts? Answer these questions and more as we delve into animals and the winter season.

### **Chemistry Craze / Fascinating Physics**

Young scientists perform a variety of experiments as they explore chemistry and physics. Older campers will learn about pulleys and levers while rappelling into Goat Cave!

### **Amazing Space / Out of This World**

Which star is nearest the earth? Learn more about planets, stars and outer space. Observe the night sky & constellations in the Star Lab, our inflatable planetarium.

### **Flit, Flutter & Fly**

Study winged creatures and discover how animals use the adaptation of flight. Search for flying insects and meet the ANSC birds.

### **Climbing Camp**

Get ready for high adventure as we climb cliff faces on the Barton Creek Greenbelt. Gain an appreciation for nature through outdoor activities like hiking and climbing at Gus Fruh Park.

Learn how to tell direction using a compass and the stars. Learn wilderness safety tips and acquire survival skills, like how to build a shelter and a campfire.

### **Radical Rocks**

Do you know how to make a rock fizz? Did you know some rocks grow crystals? Explore Whirlpool Cave and discover the exciting world of geology as we take a closer look at rocks and minerals.

### **Imagination Machines**

Use your creativity to invent something new. Learn about physics and solar power as we let our imaginations run free to explore the possibilities of creating a machine.

### **Happy Trails**

Come explore some of best trails in Austin. Enjoy the sites and sounds of Zilker Park as we hit the trails. Observe nature on a hike through the Greenbelt to Sculpture Falls on Barton Creek.



Date	Day	Ages 5-7 Themes	Ages 5-7 Registration Codes	Ages 8-10 Themes	Ages 8-10 Registration Codes
December 18	Friday	Itsy Bitsy Friends	7302.201	Art in Nature	7304.201
December 21	Monday	Polar Regions	7302.202	Adventures in Archeology	7304.202
December 22	Tuesday	Slippery & Scaly	7302.203	Animals All Around	7304.203
December 23	Wednesday	Chemistry Craze	7302.204	Fascinating Physics	7304.204
December 28	Monday	Amazing Space	7302.205	Out of this World	7304.205
December 29	Tuesday	Flit, Flutter & Fly	7302.206	Climbing Camp	7304.206
December 30	Wednesday	Animals in Winter	7302.207	Survivor 101	7304.207
December 31	Thursday	Art in Nature	7302.208	Radical Rocks	7304.208
January 4	Monday	Imagination Machines	7302.209	Happy Trails	7304.209

Ages: 5-6, 7-8 & 9-11 years olds  
 Fee: \$40/day  
 Time: 8:00 AM-5:00 PM  
 Min/Max: 6/12 per group  
 Pick-up & Drop-off: ANSC Headquarters



## Spring Break Camp 2010 March 15th—19th

Get the most out of your Spring Break; sign up for a week long camp at ANSC. Wear comfortable, weather appropriate clothes & shoes that can get dirty &/or damp & get ready for adventure. Make sure to bring a healthy lunch, two snacks & a water bottle each day.



### Outdoor Adventures (Ages 9-11)

Get outside and engage in a week of uniquely Austin adventures. Each day take on an exciting new activity, including biking the trails in Zilker Park, rock climbing in the Greenbelt and spelunking Whirlpool cave. Experience all this and more while gaining appreciation and knowledge of Central Texas precious green spaces.

### Wet Wonderful Water (Ages 7-8)

Water is required by all life on earth; humans, animals and plants need it to survive. Water quenches thirst, fills the rivers and streams and nourishes crops. Take a closer look at H<sub>2</sub>O while splashing in the creek and riding in the paddle boats this week. Play the water cycle game and learn about the amazing properties of water, ice and steam.

### Metamorphic Magic (Ages 5-6)

Spring is the time the earth begins to awaken from its winter slumber. Look for evidence of the changing world; investigate the blooming flowers, swimming tadpoles and fluttering butterflies at ANSC. Hike on the Zilker Preserve and visit Mirror Pond on a frog & toad search. Inspect the trails for proof of new life on the preserve.

Ages	Code	Fee	Theme
Ages 9-11	7316.301	\$185	Outdoor Adventures
Ages 7-8	7315.301	\$175	Wet Wonderful Water
Ages 5-6	7314.301	\$175	Metamorphic Magic

# SUMMER

## Coming Soon:

Summer Camp 2010 Brochure available in early February!  
 Old favorites & exciting new camps coming in summer 2010.  
 Look for the Austin Nature & Science Center booth at the  
 Austin Family Magazine Camp Fair  
 Saturday, January 30th 2010.  
 Mail in registration for summer camp begins March 2nd, 2010.



# Family Fun Night

## Family Caving Night

November 20th, 2009

6:00PM-9:00PM

Go on a caving adventure at Whirlpool Cave!

\$18 per person.

Limit 12 spaces.

For ages 8 & up.

## Family Star Party Night

January 15th, 2010

6:00PM-9:00PM

The whole family can visit the Planetarium and hike to a special place to view the night sky!

\$3 per child and \$5 adult.

Limit 50 spaces.

## Hoot Hike Night

March 12th, 2010

6:00PM-9:00PM

Bring the whole family on a hike through the Zilker Preserve as we look and listen for nocturnal animals.

\$3 per child and \$5 adult.

Limit 50 spaces.



### *Green Tips For Kids:*

#### Green Teeth

Wait a minute! You don't want green teeth, do you? NO WAY! You can make your teeth fresh and clean and conserve water by simply turning off the faucet while you're brushing. That's so easy!!!

#### Eat a Sandwich

I know what you're thinking, how is eating a sandwich going to help save the planet? Eating cold foods, like a sandwich, means you are not using electricity to cook. If you make your sandwich from ingredients that do not require refrigeration, like peanut butter, you're using even less energy.

#### Reusable Containers

Try using reusable containers instead of disposable plastic bags. You can use cloth bags to help your parents bring home the groceries. Reuse plastic containers, such as the ones that things like butter & spreads are sold in to pack your lunch.

#### Join the Green Thumb Gang

Plant a tree, a garden or a pot of flowers. You can plant something in your yard and watch it grow. Will it be something the animals in your yard will use? Planting butterfly weed will attract just what its name suggests. Try growing your favorite fresh fruit, like strawberries.

#### Recycle

Recycling helps the earth in many ways and is so easy everyone can do it. When you recycle, used materials are taken to a recycling plant and made into something new. For example, soda cans can be made into aluminum that can be used in building houses. Or your old homework pages can be made into new clean sheets of paper used in an office building. Recycling helps keep the objects out of landfills. Also, by recycling we save our natural resources, things like plants, minerals & water. To make 1 ton of recycled paper uses up to 50% less water and saves as many as 17 trees.



## *Birthday Parties*

**Throw a fun, exciting and stress free birthday party for your child!**

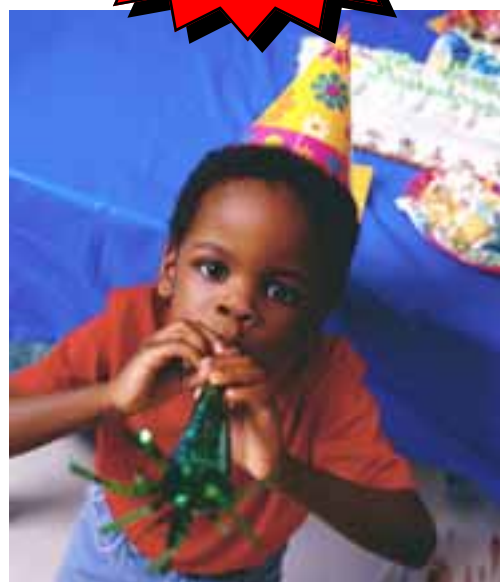
**Dinosaur, Wildlife or Planetarium Birthday Party** fee includes: a 45 minute presentation, the use of party room with tables & chairs.

**Adventure Birthday Party** fee includes all the equipment for your Caving Birthday or Canoeing Birthday & two experienced staff guides. One adult must accompany the group on the adventure.

Please call 327-8181, ext 11 to schedule your party. Birthday parties are available on Saturdays 10:00 AM to 12:00 PM and 1:30 PM to 3:30 PM and weekdays 3:30 PM to 5:30 PM. Due to limited space & availability, birthday party rooms must be cleaned & vacated at the end of the 2 hour period. Birthday party participants are welcome & encouraged to visit ANSC exhibits & grounds until 5:00 pm closing time. Parties are scheduled October thru May.



**Space is  
Limited**



### **WILDLIFE BIRTHDAY**

Ages: 4-8 Time: 2 hrs

Fee: \$175 15 children maximum

Celebrate your child's birthday with an up close and personal visit with ANSC resident wildlife. ANSC staff present a 45 minute wildlife program.

### **DINOSAUR BIRTHDAY**

Ages: 4-8 Time: 2 hrs

Fee: \$175 15 children maximum

Children explore plastic models of dinosaurs, build an exploding volcano and explore the "Dino Pit" exhibit while digging for fossils like a paleontologist.

### **PLANETARIUM BIRTHDAY**

Ages: 4-10 Time: 2 hrs

Fee: \$175 15 children maximum

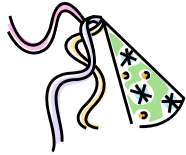
Be a star on your birthday and explore the legends behind the constellations. ANSC staff present a 45 minute program in the ANSC inflatable planetarium.

### **ADVENTURE BIRTHDAY**

Ages: 9 & Up Time: 3 hrs

Fee: \$200 12 children maximum

Our experienced & qualified staff will lead groups of young adventurers on either a caving, rock climbing or canoe trip in the Austin area. Equipment is provided. One adult must accompany each group.



# BIRTHDAY PARTIES

Today's Date \_\_\_\_\_

Parent's Name: \_\_\_\_\_ Email Address: \_\_\_\_\_

Child's Name \_\_\_\_\_ Age on Birthday: \_\_\_\_\_

Address \_\_\_\_\_

City/Zip Code \_\_\_\_\_

Home Phone \_\_\_\_\_ Work Phone \_\_\_\_\_

*(Circle One)*

<b>Wildlife</b> \$175/15 children Ages 4-8 \$5 per extra child Up to 18 total children	<b>Dino Party</b> \$175/15 children Ages 4-8 Max 15 children (Only 15 tool kits)	<b>Planetarium Party</b> \$175/15 Ages 4-10 \$5 per extra child Up to 18 total children	<b>Adventure</b> \$200/12 children Ages 9 & Up Max 12 children Up to 12 children & 1 adult
-------------------------------------------------------------------------------------------------	-------------------------------------------------------------------------------------------	--------------------------------------------------------------------------------------------------	-----------------------------------------------------------------------------------------------------

Date Requested 1<sup>st</sup> Choice \_\_\_\_\_ 2<sup>nd</sup> \_\_\_\_\_ 3<sup>rd</sup> \_\_\_\_\_

*(Circle One)*

Weekdays from 3:30 PM – 5:30 PM: Mon Tues Wed Thurs Fri

Saturday : 10:00 AM – 12:00 PM 1:30 PM-3:30 PM

Dinosaur Party \$175.00 = \$ \_\_\_\_\_

Wildlife Party \$175.00 = \$ \_\_\_\_\_

Planetarium Party \$175.00 = \$ \_\_\_\_\_

Adventure \$200.00 = \$ \_\_\_\_\_

Extra Children \$5 x \_\_\_\_\_ = \$ \_\_\_\_\_

*Office use only*

### Payment Information

Amount Paid \$ \_\_\_\_\_

Date Paid \_\_\_\_\_

Check # \_\_\_\_\_

**Total Amount Due \$** \_\_\_\_\_

### CREDIT CARD INFORMATION:

Name as it appears on card: \_\_\_\_\_ Card type: VISA MC AMEX DISC

Card Number: \_\_\_\_\_ Expiration Date: \_\_\_\_\_

Cancellation and Refund policy - The Birthday party must be cancelled in writing two weeks prior to the reserved date of the party.

If the cancellation is received two weeks prior to the reserved date, a refund will be processed, less the \$35 processing fee.

If the cancellation is not two weeks prior to the reserved date, there is no refund.

- Birthdays are scheduled Oct through May.
- Call at least one month in advance to check for openings.
- No Sundays Available

# ***Big & Little Adventures***

**Ages:** 3-4 years old & adult    **Fee:** \$20/class \$55/month  
**Time:** 10:00 AM-11:00 AM    **Min/Max:** 6/8 kids/group  
(Please arrive at 9:45 to sign in.)

**Program meets at: ANSC Visitor Pavilion**

**Pre-Registration Required.**

Spend quality time discovering nature with your preschool aged child. On select Thursday mornings, a preschool specialist will lead you & your child on a learning adventure. Each class includes exploring outside, meeting an animal friend & doing a simple craft. The program is designed for a 3-4 year old child and parent. Please wear weather appropriate play clothes & walking shoes. One child per adult please!

## **October Series:**

**Reptile Round-up**  
**October 8, 15, & 22**

## **November Series:**

**Flying Friends**  
**November 5, 12, & 19**

## **January Series:**

**Marvelous Mammals**  
**January 14, 21, & 28**

## **February Series:**

**Ponds & Puddles**  
**February 4, 11, & 18**

### **Turtles**

**Thursday, October 8, 2009**

**Registration Code: 4060.409**

Meet a box turtle and touch his shell as part of "Reptile Round-up". Explore the outdoors as we look for turtle habitats and play a game. Create a pond and thumbprint turtle family to take home!

### **Lizards**

**Thursday, October 15, 2009**

**Registration Code: 4061.409**

Feel the rough scales on a lizard's tail. Colors and patterns of a lizard's skin camouflage and protect the animal from predators. Come with us as we search for lizards in the meadow. Perhaps we will see a Texas spiny lizard scurrying up a tree.

### **Snakes**

**Thursday, October 22, 2009**

**Registration Code: 4062.409**

Would you like to touch a snake? You can during the final meeting of "Reptile Round-up". Slither down the path as we look for clues that snakes live at the Nature Center. Make a snake you can take home. Don't worry, this one doesn't bite.

### **Birds**

**Thursday, November 5, 2009**

**Registration Code: 4063.410**

There are many types of birds. Large birds, little birds, brown birds, and even blue birds. Explore the many types of birds that we see at the Nature Center. Go on a bird watching hike and paint with a feathers.

### **Owls**

**Thursday, November 12, 2009**

**Registration Code: 4064.410**

Meet an ANSC resident owl. Learn how these nocturnal raptors are different from other birds. Visit the birds of prey exhibit and see many types of owls. Make an owl puppet to take home.

### **Bees & Insects**

**Thursday, November 19, 2009**

**Registration Code: 4065.410**

Join us as we search the meadow high & low for these tiny creatures we call bugs. Learn the difference between bees and butterflies. Get a chance to touch one of the six-legged creatures that lives at the Nature Center. Finally we'll do some awesome insect art.

### **Rabbits**

**Thursday, January 14, 2010**

**Registration Code: 4066.409**

What makes an animal a mammal? Discover the unique characteristics of mammals. Touch a rabbit and feel its soft fur. Then hop outside and look for bunnies hiding in the grass. Make your own cotton tail to take home.

### **Ferrets**

**Thursday, January 21, 2010**

**Registration Code: 4067.409**

Some mammals eat plants and some eat meat. Ferrets are predators; hunting for their meals. Encounter a ferret up close and see the adaptations that help this carnivore find food. Play the predator and prey game. Create a slinky ferret that will go home with you.

### **Bats**

**Thursday, January 28, 2010**

**Registration Code: 4068.409**

Did you know that a mother bat takes care of her babies a lot like your parents take care of you? Learn how bats look for food at night. Take this opportunity to get an up close view of a bat & make a cool bat craft.

### **Frogs & Toads**

**Thursday, February 4, 2010**

**Registration Code: 4069.410**

Hike the Zilker Nature Preserve on an adventure as we explore mirror ponds. Then leap to the classroom to visit with our toad & frog friends and engage in an exciting green craft.

### **Salamanders**

**Thursday, February 11, 2010**

**Registration Code: 4070.410**

Salamanders are amphibians, like frogs, but they are shaped like lizards. Come discover these interesting creatures that live in cool, moist areas, like caves, creeks and ponds. You'll get the opportunity to meet a tiger salamander. Then hike on the Zilker Preserve as we search for these slippery fellows.

### **Turtles & Fish**

**Thursday, February 18, 2010**

**Registration Code: 4071.410**

Visit the Nature Center ponds & feed the fish. We'll go to Small Wonders to look at the fish and turtles that live at the Nature Center. Touch a box turtle and see a red eared slider up close in the classroom. Wrap up with an exciting craft.

# Trade Counter

At the Naturalist Workshop

Here's how it works:

- 1 **FIND** something when you're outside that interests you.
- 2 **LEARN** about your new nature item.
- 3 **BRING** your item to the Trade Counter & share what you've learned. (An item can be a photo, drawing &/or a written description of the item you found.)
- 4 **EARN** points for your item & your knowledge.
- 5 **USE** your points by taking home something from our trade collection or save them for later.



## Accepted Items:

(Limit 5 items per trade)

- Clean bones
- Clean shells
- Snake sheds
- Fossils
- Antlers
- Rocks & minerals
- Cast of animal foot prints
- Clean insect & crustacean exoskeletons
- Plant parts (nuts, seeds, pressed flowers & leaves)
- Nature journals (drawings, descriptions & photos)

**Please don't bring** items collected on land where natural items on state & federal lands where specimens are protected. Protected item such as, arrowheads or other cultural artifacts, animal skins, pelts or mounts, birds or bird parts (including eggs, feathers, nests, etc). Please don't bring killed animals or whole plants (one leaf is okay), live animals or plants.

## **Trade Counter Hours:**

Wednesday through Saturday 10AM-4PM

We now have extended hours so you can trade after school.

Visit our website for the monthly mystery object: [www.ci.austin.tx.us/ansc/natwork](http://www.ci.austin.tx.us/ansc/natwork)

## Awesome Items from Summer 2009

- Mummified Snake
- Shells, Starfish and Green Sea Urchin
- Trilobite
- Half of a Megalodon Shark Tooth
- Arkansas Quartz Crystals
- Hercules Beetles—six in one week!

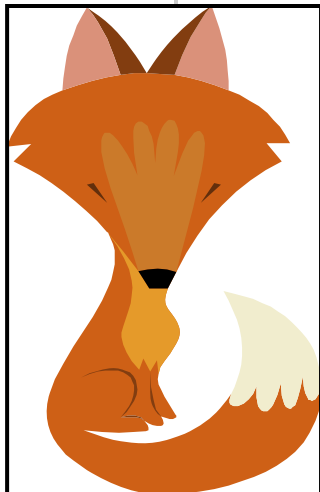
We also received a mastodon tooth that is staying in the fossil reference collection. Come check it out!



The newest ANSC animal resident is **Sammie** the **Red Fox**. Sammie arrived at our facility in the summer of 2009. Sammie was illegally kept as a family pet after she was found orphaned as a very young kit. She

was kept with a domestic dog for several years and became imprinted. When a wild animal becomes imprinted, acclimated to human activity, it is no longer safe for the animal to return to the wild.

There are four species of fox in Texas, the red, gray, desert and swift fox. A red fox is aptly named with reddish fur covering most of its body and white or ashy fur on its nose, chest and the tip of its tail. Distinctive black fur covers the legs and feet of the red fox. Head and body length ranges from 18 to 34 inches with a tail between 12 and 24 inches long. Weights of the red fox average between 10 to 15 pounds.



Red foxes live all over the world in diverse habitats including forest, desert, mountains and urban areas. The red fox was introduced to our state for the purpose of sport hunting and now can be found in central, north and eastern parts of Texas. They have a reputation for being clever, resourceful and intelligent.

The red fox is a solitary hunter preferring small mammals, such as rodents and rabbits but they are omnivores and will eat fruit, vegetables and insects depending on the availability of prey. They have adapted to living in urban communities and will opportunistically eat garbage and pet food left unattended.

Look for Sammie, the red fox, next time you visit the Nature Center and meet the newest ANSC wildlife resident.

\* Information found on the National Geographic and the University of Michigan's Animal Diversity website.

## WISH LIST FOR THE ANIMALS

At the  
**Austin Nature & Science Center**

**DOG CHOW FOR ADULT DOGS**  
**DOG BISCUITS ANY FLAVOR**

\*\*\*Cat Chow for Adult Cats\*\*\*

**IAMS KITTEN CHOW**

**CLAY CAT LITTER**

\*\*\*Tropical Fish Flakes\*\*\*

**WILD BIRD SEED**

**Reptomin Turtle Food**

\*\*RABBIT CHOW\*\*

\*Rabbit Toys & Beds\*

**\*Ferret Toys & Hammocks\***

**TENNIS BALLS**

\*\***PINE SHAVINGS**\*\*

\*\*FULL SPECTRUM LIGHT BULBS\*\*

*LAUNDRY DETERGENT*

**LIQUID ANTI-BACTERIAL HANDSOAP**

PLEASE DONATE ANY OF THE ABOVE ITEMS AT OUR VISITOR PAVILION COLLECTION BARREL!!!!

**THANK YOU!**

## Are you interested in sponsoring an animal?

If so, please fill out the form below. For more information, pick up the Animal Friends Adoption Program Brochure available at the ANSC Front Desk.

Animal Friend or Species'

Name: \_\_\_\_\_

Address: \_\_\_\_\_

City/State/Zip: \_\_\_\_\_

Phone: \_\_\_\_\_

Is the above registration a gift? Yes \_\_\_ No \_\_\_

Gift from: \_\_\_\_\_

Address: \_\_\_\_\_

City/State/Zip: \_\_\_\_\_

Phone: \_\_\_\_\_

Email Address: \_\_\_\_\_

CREDIT CARD INFORMATION:

Name as it appears on card: \_\_\_\_\_

Card type: VISA MC AMEX DISC

Card Number: \_\_\_\_\_ Expiration: \_\_\_\_\_

### Animal Adoption Application

Complete this form & mail it with your contribution to the:

**Wildlife Fund**

**Austin Nature & Science Center**

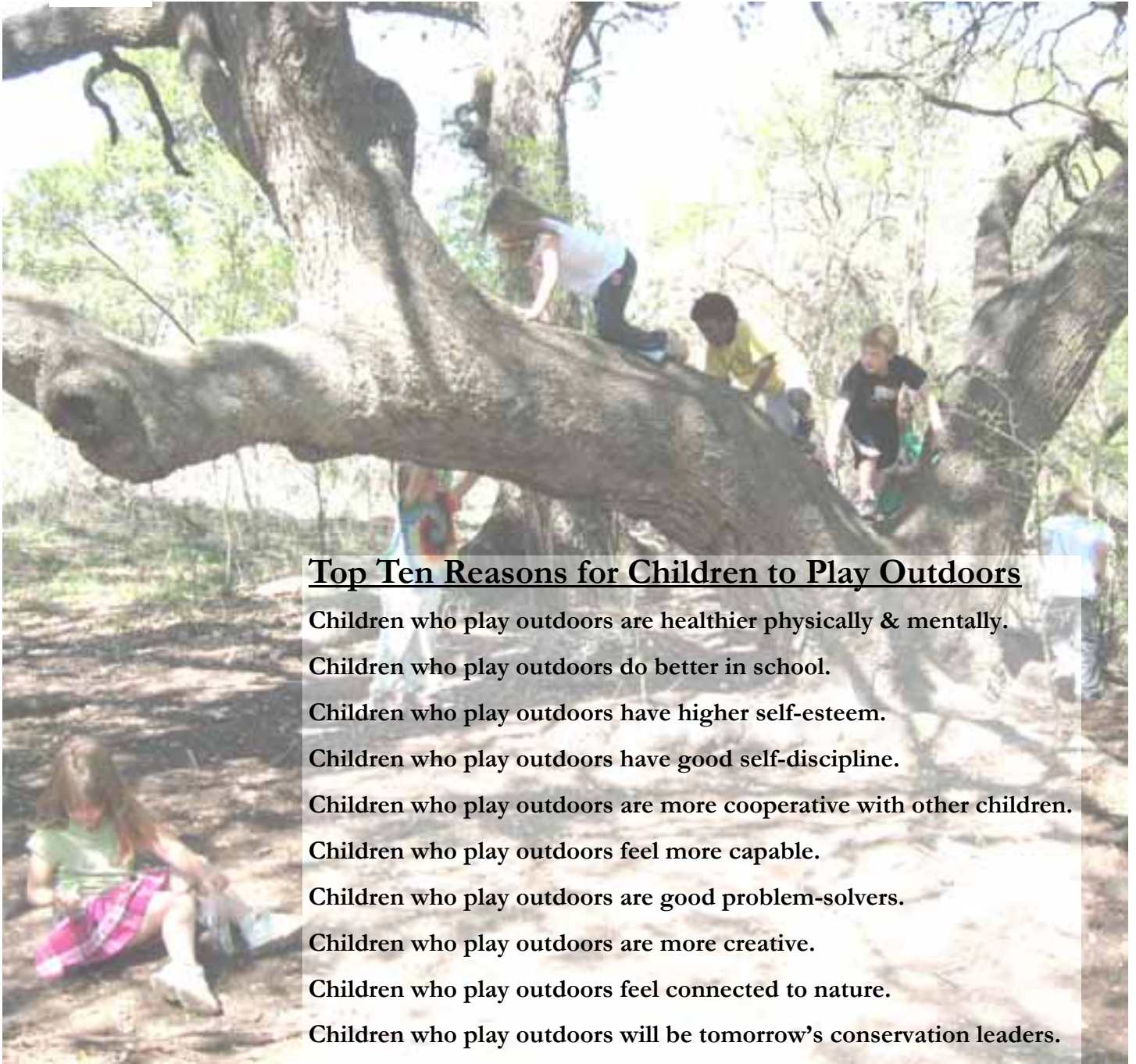
**301 Nature Center Drive**

**Austin, Texas 78746**



Amount enclosed \$ \_\_\_\_\_

Make checks payable to the  
Austin Nature & Science Center



### **Top Ten Reasons for Children to Play Outdoors**

**Children who play outdoors are healthier physically & mentally.**

**Children who play outdoors do better in school.**

**Children who play outdoors have higher self-esteem.**

**Children who play outdoors have good self-discipline.**

**Children who play outdoors are more cooperative with other children.**

**Children who play outdoors feel more capable.**

**Children who play outdoors are good problem-solvers.**

**Children who play outdoors are more creative.**

**Children who play outdoors feel connected to nature.**

**Children who play outdoors will be tomorrow's conservation leaders.**

Courtesy of Texas Parks and Wildlife Department & The Children in Nature Network

## **Wildlife Austin**

You can experience the wonder of the Austin Nature & Science Center right in your own backyard by creating a wildlife habitat garden! With just a few simple additions you can make your yard come alive with colorful birds and butterflies, chirping frogs and scurrying lizards. Wildlife will feel right at home if you provide a little food, water, cover and places to raise young. Once you have hung the Home Sweet Home sign out for local wildlife, then certify it with the National Wildlife Federation as an official habitat. Once you have a NWF certified wildlife habitat yard consider getting your whole neighborhood on board with the Neighborhood Habitat Challenge. For more information about the habitat challenge and gardening for wildlife please visit the Wildlife Austin website at [www.keeptaustinwild.com](http://www.keeptaustinwild.com) or call 512-327-8181 ext 29.



# Splash! Sheffield Education Center

Programs meet at the Sheffield Education Center  
(adjacent to Barton Springs Pool.)  
For more information call 481-1466.

## Salamander Springs

The new exhibit coming to the Sheffield Education Center this winter is perfect for children and adults. Come find out about what lives in the water underground. Families can engage in activities relating to the pool ecosystem, such as the food web puzzle and a fish identification game. The exhibit includes an exciting cave crawl designed for children. A portion of the exhibit is devoted to salamander biology where adults can access detailed information about the Barton Springs Salamander and its immediate environment. Everyone will enjoy the live video feed from a habitat camera and an algae investigation station.

**Open Tuesday– Saturday  
10 AM-5 PM  
Sundays  
12 PM-5 PM**



**Splash Haunted Cave**  
October 19th—November 1st  
Sheffield Education Center  
**Free**

Come to the Splash Exhibit & take a self guided tour through our **Haunted Cave**. Try to find all the spider webs & ghoulish figures lurking about the cave while you learn about the Edwards Aquifer. Perfectly suited for toddlers & pre-school aged children. It's a fun & educational way to spend time with the whole family.

## **Deep Down Underground**

Learn about Austin's unique cave & aquifer system located just beneath our feet.

**November 7th, 2009**

**10:00 am to 3:00 pm**

Sheffield Education Center  
(adjacent to the Barton Springs Pool)  
2201 Barton Springs Road

### Free Fun Family Activities:

Learn Cave Mapping

See Barton Springs Salamanders

Encounter a Bat

Investigate Cave Geology

Paint a Pictograph

Explore the Water Cycle

### **Visit a Wild Cave!!!**

Saturday, November 7th, 2009

\$18/per person

Pre-registration Required (Call 327-8181)

10:00 AM-12:30 PM

1:30 PM– 4:00 PM

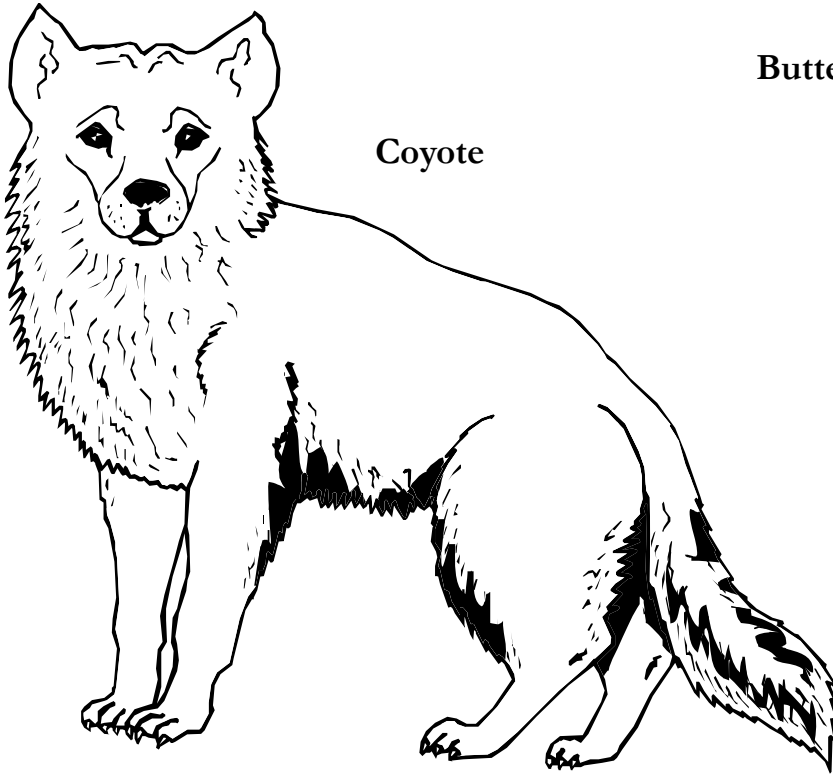
Space is limited - Sign Up Today!

Participants must be at least 8 years old.

# Kid's Corner Game Page

## Animal Scavenger Hunt and Coloring Page

Search for these animals at the Austin Nature & Science Center.

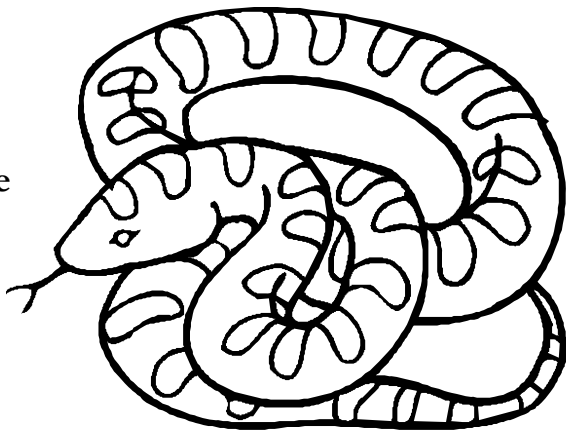


Coyote

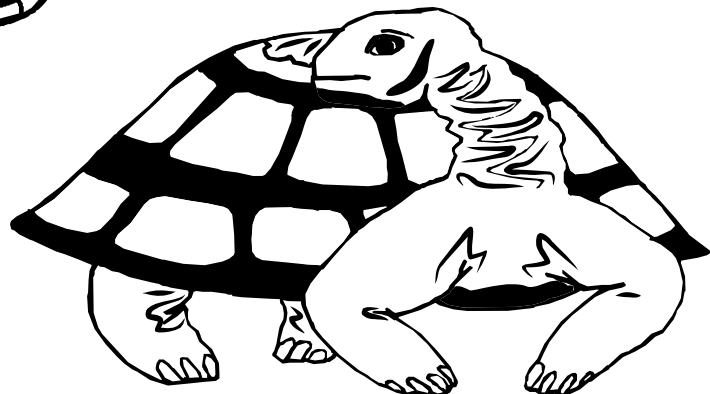
Butterfly



Frog



Snake



Turtle



Get outside and into the wild! Visit the **Zilker Nature Preserve**. Hike the foot trails in a gorgeous natural area right in the middle of Austin. While hiking through the preserves visit the ephemeral ponds and observe how insects, amphibians and turtles begin life in just a tiny bit of water. Walk down the dry creek bed and spot fossil clues to the natural history of Central Texas. Don't forget to pause and look up at the cliffs. If you are quiet & incredibly lucky you might spy a bird of prey making her nest on the cliff's face. Follow the trail up to the top of the cliff where you will find a rock-walled ramada that over looks the preserve & downtown Austin. Visit the meadow to see colorful butterflies & spiders. There is plenty to discover as you walk over 2 miles of diverse nature trails. Maps are available at the Visitor's Pavilion & interpretative signs are placed along the way for your convenience, enjoyment & education.

Interested in volunteering with **Austin Nature Preserves System**? You can help ensure that the preserves in Austin remain a great place for people to visit & a wonderful place for nature to live. For more information send an email to: [rene.barrera@ci.austin.tx.us](mailto:rene.barrera@ci.austin.tx.us)



## *Kids and Critters Club*

Become a member of the wildest club in town! Help the kids and critters who use the ANSC by joining our club and making an annual donation. By helping us, you gain these valuable benefits:

**\*Free Natural Selections brochure for 1 year   \*10% discount on birthday parties   \*Free use of Eco-Detective Kit**

**\* Early summer camp registration, 1 camp per child   \*10% discount on gift store purchases**

### MEMBERSHIP INFORMATION

Child's Name: \_\_\_\_\_ Today's Date: \_\_\_\_\_

Parent's (Guardian) Name: \_\_\_\_\_

Address: \_\_\_\_\_ City: \_\_\_\_\_ Zip: \_\_\_\_\_

Home Phone: \_\_\_\_\_ E-Mail: \_\_\_\_\_ (for program information)

Type of Membership (check one):   Individual \$35   Family \$45   Donor \$60   Sponsor \$100

If family Membership, please list additional family members:

1. \_\_\_\_\_ 3. \_\_\_\_\_

2. \_\_\_\_\_ 4. \_\_\_\_\_

### PAYMENT INFORMATION

**To pay by check or money order**, fill out the top portion of this form and return it with a check or money order made out to:

Austin Nature and Science Center

Phone: 512-327-8181

301 Nature Center Drive

Fax: 512-306-8470

Austin, Texas 78746

**To pay by credit card**, fill out this additional information:

Card type:   Visa   MasterCard   Discover   American Express

Name on card: \_\_\_\_\_ Signature: \_\_\_\_\_

Card Number: \_\_\_\_\_ Expiration Date: \_\_\_\_\_

## *Program Registration Information*

Please complete registration form (page 19). Make copies of the form as necessary. One person per registration form, please. **All programs require pre-registration unless otherwise noted.** Fill out a separate waiver for each program your child will be participating in. *Bring it when you drop your child off for the first day of his/her program.* Due to the number of participants in our programs we are unable to retrieve waivers from past programs. You may make copies of the waiver form for each program. **Do not mail the waiver form in with your child's registration.**

**Minimum Registration** - ANSC reserves the right to cancel any class that does not meet the minimum number of required participants two days prior to the class date. If this occurs, a full refund will be given, or the money can be put on credit toward other ANSC programs.

**Alternate Choices** - Due to limited program space, ANSC cannot always guarantee registration in the requested sessions. Please list alternative session choices.

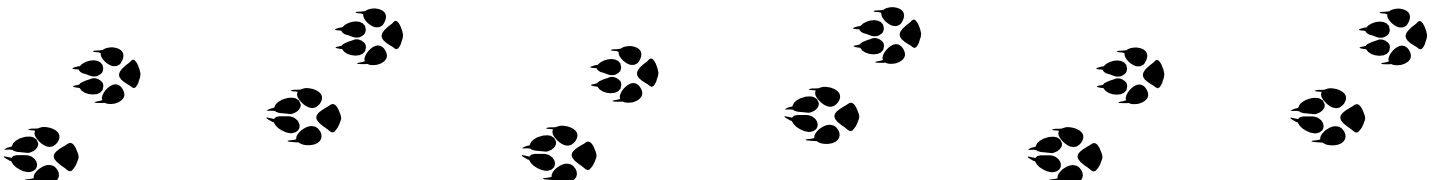
**Confirmation** - Confirmation is sent by mail upon receipt of program fees. If registering for a camp program A *Parent's Guide to Camp* booklet with map is mailed to you with your confirmation letter.

**Cancellation** - Please notify us in writing if you need to cancel your registration. **To cancel registration for a camp, you must give written notice of cancellation 2 weeks prior to the start of the camp for a refund.** If registered for a program other than camp, you must cancel more than 48 hours prior to the first class or orientation meeting. There is a \$35 processing fee per each program cancellation for refunds. If your class costs less than \$35 there is no refund. The program fee is refunded in full, with no processing fee, only if the program is cancelled by the Austin Nature and Science Center. All Field Trips are subject to cancellation or substitution.

**Signing up with a Friend** - Because many programs offered have more than one section, ANSC cannot guarantee that friends will be placed in the same class. If you would like for us to try to place participants together, please make a notation on the registration form where indicated and mail the forms together in the same envelope. Requests not mailed together will not be honored. You may only sign up with ONE friend.

**Transfers** - There is a \$10 fee to transfer a child from one camp session to another.

**Persons with Disabilities** - The City of Austin is committed to complying with the Americans with Disability Act. Individuals with disabilities are encouraged to participate in the Austin Nature & Science Center programs. You may request special accommodations to facilitate your participation/inclusion in these programs. Reasonable modifications and equal access will be provided upon request. Call 327-8181.



# Program Registration Form

**Please print one form for each participant**

Participant Name: \_\_\_\_\_ M F Today's Date: \_\_\_\_\_

If child... Child's Age \_\_\_\_\_ Child's Birth Date: \_\_\_\_/\_\_\_\_/\_\_\_\_ Child's Age at class time: \_\_\_\_\_

Parent/Guardian Name: \_\_\_\_\_ E-mail address: \_\_\_\_\_

Mailing Address: \_\_\_\_\_ City \_\_\_\_\_ Zip \_\_\_\_\_

Home Phone: \_\_\_\_\_ Work Phone: \_\_\_\_\_ Cell Phone: \_\_\_\_\_ Pager: \_\_\_\_\_

Secondary Contact Name: \_\_\_\_\_

Home Phone: \_\_\_\_\_ Work Phone: \_\_\_\_\_ Cell Phone: \_\_\_\_\_ Pager: \_\_\_\_\_

Is parent/guardian a City of Austin employee? Yes \_\_\_\_\_ No \_\_\_\_\_

Does participant have any needs requiring special care in order to participate in program/activity? Yes \_\_\_ No \_\_\_

Please specify \_\_\_\_\_

Individuals with disabilities are encouraged to participate in the COA Parks and Recreation Department Programs. You may request special accommodations to facilitate your participation/inclusion in these programs. Reasonable accommodations will be made on an individual basis. Please contact ANSC 327-8181 as soon as possible if you would like to request an accommodation.

PROGRAM NAME	7—DIGIT CLASS CODE	CLASS DATES	CLASS FEES
1.			\$
2.			\$
3.			\$
<i>Alternate classes if others are unavailable.</i>			
1.			\$
2.			\$
3.			\$
<b>TOTAL PAID</b>			\$

I would like my child to be placed in the same class as a friend: \_\_\_\_\_

**You may sign up with only 1 friend. Please mail the 2 children's forms together, otherwise your request may not be honored.**

I have read and agree to refund policies cited on the previous page. My credit card information or check is enclosed.

Parent/Guardian Signature: \_\_\_\_\_

**PAYMENT INFORMATION**

*To pay by check or money order*, fill out the top portion of this form and return it with a check or money order made out to:

Austin Nature and Science Center

301 Nature Center Drive

Austin, Texas 78746

Phone: 512-327-8181 Fax: 512-306-8470

*To pay by credit card*, fill out this additional information:

Card type: Visa MasterCard Discover American Express

Name on card: \_\_\_\_\_ Signature: \_\_\_\_\_

Card Number: \_\_\_\_\_ Expiration Date: \_\_\_\_\_

----- **FOR OFFICE USE ONLY** -----

**DATE RECEIVED:** \_\_\_\_ / \_\_\_\_ / \_\_\_\_

**PAYMENT TYPE:** CC \_\_\_\_\_ CHECK # \_\_\_\_\_ CASH \_\_\_\_\_

## Austin Nature & Science Center

The purpose of the Austin Nature and Science Center is to offer educational and recreational opportunities that increase awareness of and appreciation for the natural world of Central Texas and how it relates to the rest of the earth. Explore the outdoors on the 80 acre site located in west Zilker Park. We offer hands on discovery, environmental science education programs and exhibits designed for the entire family. Programs include school field trips, Nature's Way Preschool, camps for youth, family programs and special events. Exhibits include the Naturalist Workshop, the Eco Pond Trail, the Dino Pit and enclosures for over 50 resident wildlife representatives of Central Texas.

Celebrating 50 years of environmental education opportunities for the entire family. Join us in 2010 as we celebrate our 50th anniversary!

Grounds & exhibits are open 7 days a week. Programs require pre-registration.

Admissions to the site is **FREE**

Donations Accepted

Monday thru Saturday 9 am—5 pm

Sunday 12 noon—5 pm

Call (512) 327-8181 or visit us on the web at [www.ci.austin.tx.us/ansc](http://www.ci.austin.tx.us/ansc)

### **Volunteer Opportunities**

Interested in volunteering at the Nature Center?  
Pick up a volunteer application at the Front Desk or  
send an email to

[debra.windsor@ci.austin.tx.us](mailto:debra.windsor@ci.austin.tx.us)

There are many opportunities to make a difference.

### **Parks & Recreation Department Mission Statement**

The purpose of the Parks and Recreation Department is to provide, protect and preserve a park system that promotes recreational, cultural and outdoor experiences for the Austin Community.



Austin  
Nature & Science Center

301 Nature Center Drive

Austin, Texas 78746

Phone: 512-327-8181

Fax: 512-306-8470

[www.ci.austin.tx.us/ansc](http://www.ci.austin.tx.us/ansc)



Austin  
Parks and  
Recreation

A City Within A Park



#### **Mayor and City Council Members**

Mayor Lee Leffingwell  
Mayor Pro Tem Mike Martinez  
Council Member Chris Riley  
Council Member Randi Shade  
Council Member Laura Morrison  
Council Member Bill Spelman  
Council Member Sheryl Cole

#### **City Managers Office**

Marc Ott, City Manager  
H.G. (Bert) Lumberas, Assistant City Manager

#### **Parks and Recreation Board Members**

Linda H. Guerrero, Chair  
William Abell, Board Member  
Carol Lee, Board Member  
Jerome Perales, Board Member  
Jane Rivera, Board Member  
Mark Vane, Board Member

#### **Parks and Recreation Board Department**

Sara L. Hensley, CPRP, Director  
Farhad Madani, Assistant Director  
Stuart Strong, Assistant Director  
Cora D. Wright, Assistant Director

**Persons with Disabilities** - The City of Austin is committed to comply with the Americans with Disability Act. Individuals with disabilities are encouraged to participate in the Austin Nature & Science Center programs. You may request special accommodations to facilitate your participation/inclusion in these programs. Reasonable modifications and equal access will be provided upon request. Call 327-8181.