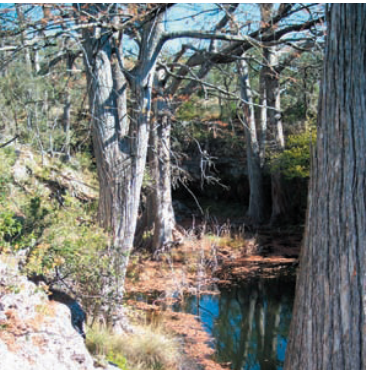




Milton Reimers Ranch Park

Master Plan

Adopted by Travis County Commissioners Court on August 14, 2007



L A N D
D E S I G N
P A R T N E R S

Milton Reimers Ranch Park

Proposed Master Plan

Prepared for:

Travis County Commissioners Court

Samuel T. Biscoe, Travis County Judge
Ron Davis, Commissioner Precinct 1
Sarah Eckhardt, Commissioner Precinct 2
Gerald Daugherty, Commissioner Precinct 3
Margaret Gomez, Commissioner Precinct 4

Design Team

Transportation and Natural Resources

Joseph P. Gieselman, Executive Manager, TNR
Charles Bergh, Parks Director
Roy Turley, Parks Division Manager
Steve Manilla, Public Works Director
Dan Perry, West District Parks Manager
Kurt Nielsen, East District Parks Manager
Michael Brewster, Park Supervisor
Kevin Connally, Senior Environmental Specialist
Roger Schuck, Senior Engineer
Wendy Scaperotta, Senior Planner (Project Manager)

Consultants

Brent Luck, Land Design Partners (Landscape Architect)
Larry Halford, MWM Design Group (Architect)
Daniel Sharp, Land Design Partners (Landscape Designer)
Brian Wells, MWM Design Group (Civil Engineer)
Veronica de Barrera, MWM Design Group (Architect)

Design Team Contacts

TNR Parks Department Contact

Charles Bergh
Parks Director
P.O. Box 1748
Austin, TX 78767
ph. 512.854.9383
charles.bergh@co.travis.tx.us

TNR Planning Program Contact

Wendy Scaperotta
411 West 13th Street
Austin, TX 78767
ph. 512.854.7655
wendy.scaperotta@co.travis.tx.us

Lead Consultant Contact

Brent Luck, RLA
Vice President, Public Sector Studio Leader
Land Design Partners
221 West Sixth Street, Suite 300
Austin, TX 78701
ph. 512.327.5900
bluck@landdesignpartners.com

Table of Contents

1.0	Project Background	Page 5
1.1	Reimers Ranch Context Map	
1.2	Reimers Ranch History	
1.3	Parks Bond Funding	
1.4	Master Planning Process	
2.0	Master Plan	5
2.1	Master Plan Goals & Design Guidelines	
2.2	Proposed Park Activities	
2.3	Proposed Concept Plan	
2.4	Proposed Master Plan	
2.5	Character Studies	
2.6	Phase One Cost Estimate	
3.0	Development Program	14
3.1	Development Priorities	
3.2	Tier 1 Development	
3.3	Tier 2 Development	
3.4	Tier 3 Development	
3.5	Park Structures	
3.6	Future Development	
4.0	Site Inventory & Analysis	19
4.1	Terrain Analysis	
4.2	Milton Reimers Ranch Park	
4.3	Pogue Springs Preserve	
5.0	Appendix	27
5.1	Stakeholder Interests - Reimers Planning Group	
5.2	Public Review Comments	
5.3	Travis County's Response to Public Review Comment	

Page
5

5

14

19

27



Milton Reimers Ranch Park

Context Map Job#P4027-01 05.22.07



8 800 1600 3200 4800 6400 Feet

Highway 71

Hogge Parkland Reserve

Pogue Springs Preserve

Reimers Parkland Reserve

Milton Reimers Ranch Park

Hamilton Pool Preserve

Hamilton Pool Road

Pedernales River Corridor



TRAVIS COUNTY
PARKS

1.0 Project Background

1.2 Reimers History

- Reimers Ranch Park has been operated as a private park for years.
- Historically it has been used by climbers, mountain bikers, fisherman, birders and hikers.
- When the white bass run along the Pedernales each spring, there is a large influx of fishermen. Their gathering along the river has been given the nickname "Reimers Fish Camp."
- Annual events are held by R2C2 (Reimers Ranch Climbing Committee). All climbing routes have been installed and maintained by local climbers.
- Mountain biking events and races are held on a regular basis. All mountain bike trails have been installed and maintained by local mountain bikers.
- Bird watchers frequent Reimers because of the diversity of species associated with the open grasslands and because of its remote, undisturbed character.

1.3 Parks Bond Funding

- The budget for parkland acquisition and phase one development is \$14.76 million (2001 & 2005 Bond Program).
- \$5.1 million has been allocated for phase one construction.
- \$18 million was approved by voters in the 2005 bond election to preserve approximately 1800 acres of natural areas adjacent to the park.
- Inclusion of the project in the 2005 bond package was ensured by strong community support from climbers, mountain bikers, and grass root organizations advocating land preservation in Southwest Travis County.

1.4 Master Planning Process

- 1) Hold Stakeholder meetings with members of the Reimers Planning Group, a loose association of existing user group representatives and former land owners.
- 2) Perform site visits, photographic surveys, site inventory and analysis of environmental and cultural resources.
- 3) Develop Master Plan Goals and Design Guidelines.
- 4) Develop Program utilizing stakeholder input and site analysis.
- 5) Develop Master Plan.
- 6) Take Proposed Master Plan out for public review.
- 7) Complete Master Plan.
- 8) Court Adoption of Master Plan.

2.0 Master Plan

2.1 Master Plan Goals & Design Guidelines

- Preserve Hill Country Character
- Balance park development with resource protection
- Enhance existing park users' experiences
- Attract park users
- Develop a sustainable management plan
- Keep in mind the following questions:
 - Where are existing uses currently found in the park?
 - What other user groups would be interested in the park?
 - What other uses can be accommodated in the park?

2.2 Proposed Park Activities

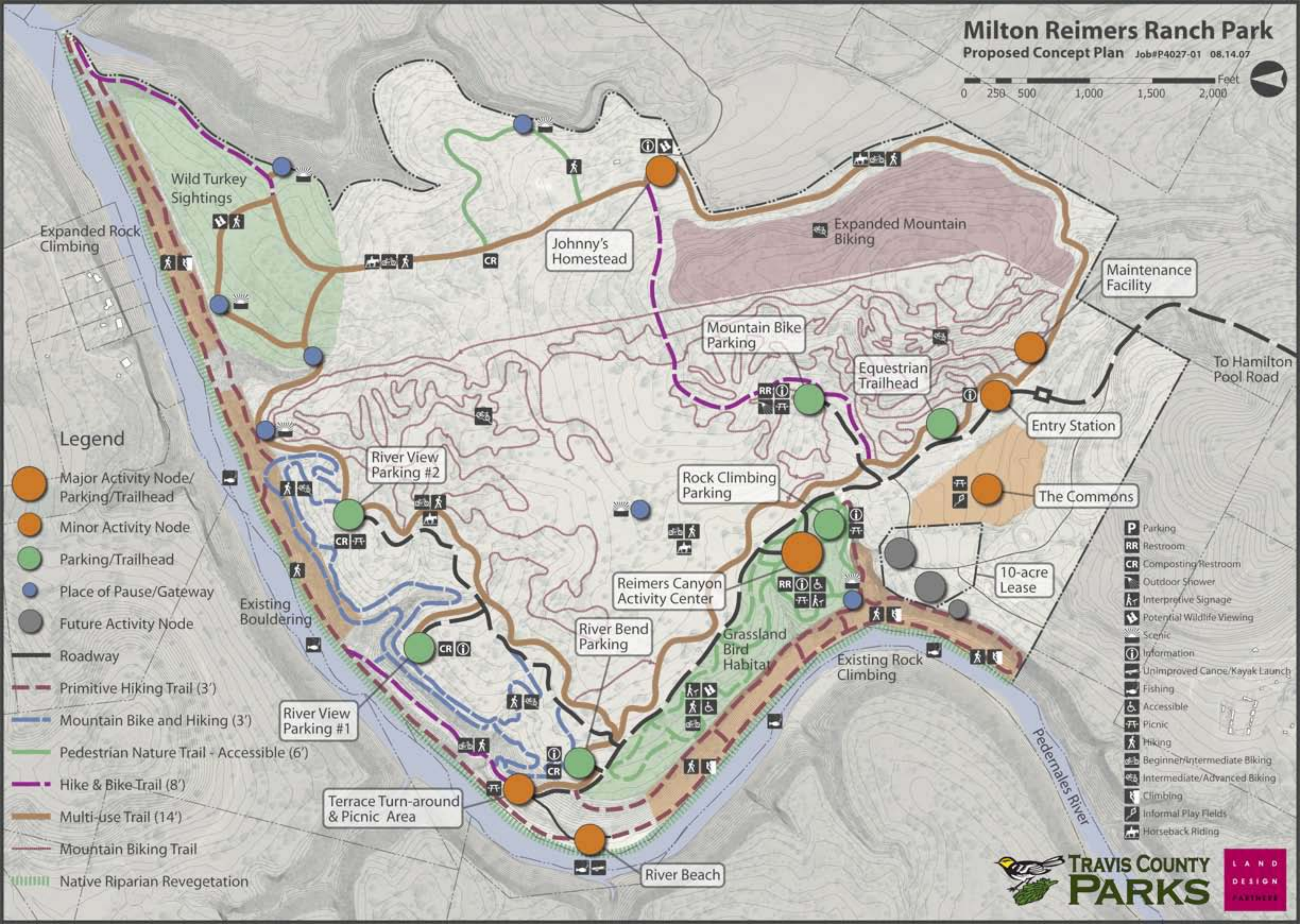
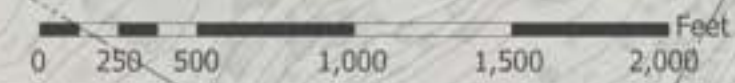
- Educational kiosks
- Interpretive Trail interaction
- Accessible Trail interaction
- Walking
- Hiking
- Mountain Biking (Advanced, Intermediate and Beginner)
- Rock Climbing
- Horseback Riding
- Fishing
- River interaction
- Wildlife viewing
- Bird watching
- Picnicking
- Stargazing
- Informal field activities (playing frisbee, kite flying, kicking/throwing a ball around, etc.)

2.3 - 2.5 Concept Plan, Master Plan, and Character Studies

The following graphics are provided below:

- Proposed Concept Plan
- Proposed Master Plan
- Architectural Design Pattern Language
- Entry Station and Multi-user Restroom Character Studies
- Park Entry and Maintenance Facility Layout Study
- Reimers Canyon Activity Center Layout Study
- Reimers Canyon Activity Center Character Study
- River Terrace Character Study





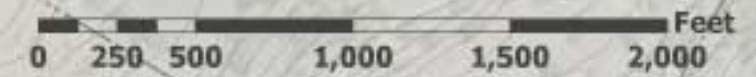
Legend

- Major Activity Node/ Parking/Trailhead
- Minor Activity Node
- Parking/Trailhead
- Place of Pause/Gateway
- Future Activity Node
- Roadway
- Primitive Hiking Trail (3')
- Mountain Bike and Hiking (3')
- Pedestrian Nature Trail - Accessible (6')
- Hike & Bike Trail (8')
- Multi-use Trail (14')
- Mountain Biking Trail
- Native Riparian Revegetation

- Parking
- Restroom
- Composting Restroom
- Outdoor Shower
- Interpretive Signage
- Potential Wildlife Viewing
- Scenic
- Information
- Unimproved Canoe/Kayak Launch
- Fishing
- Accessible
- Picnic
- Hiking
- Beginner/Intermediate Biking
- Intermediate/Advanced Biking
- Climbing
- Informal Play Fields
- Horseback Riding

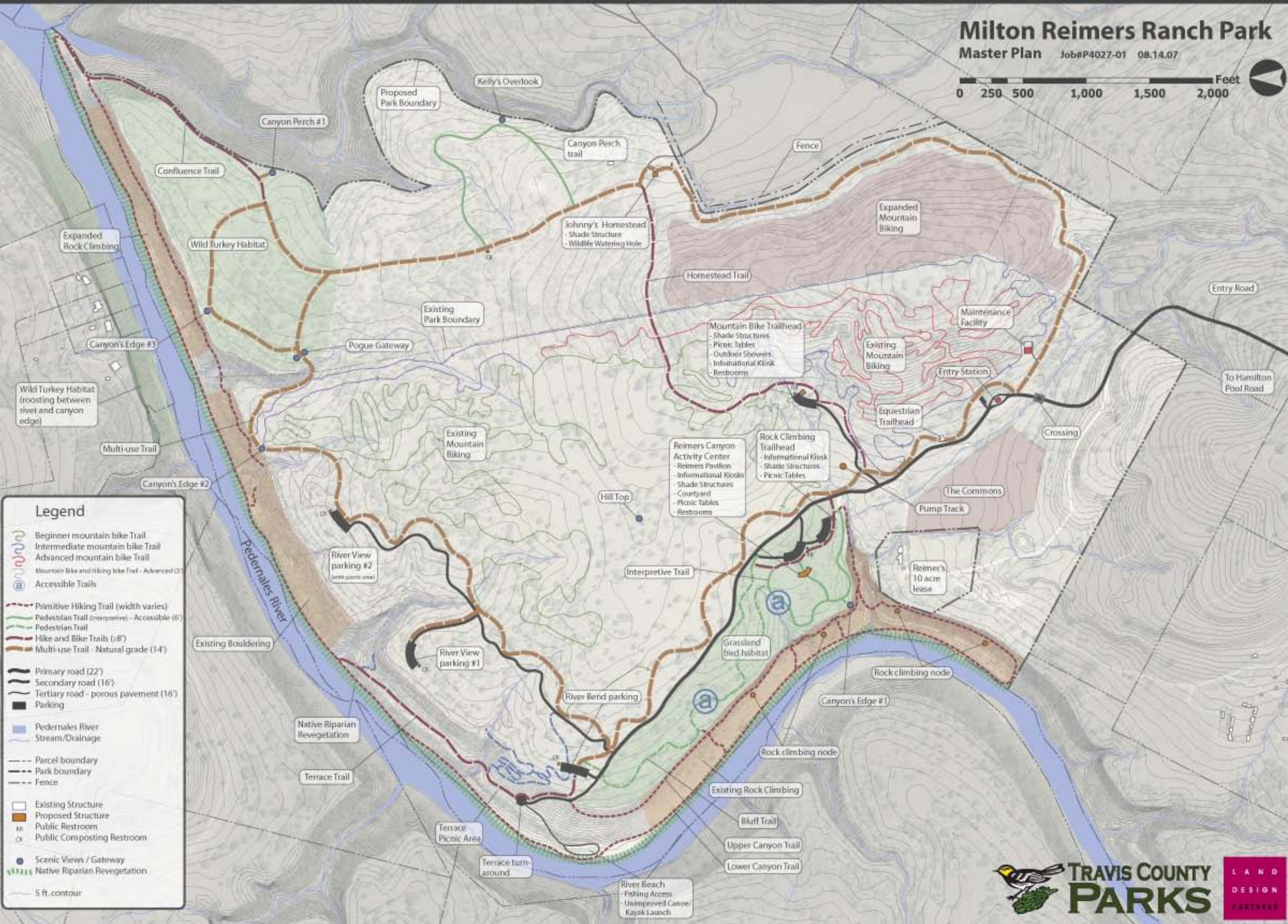
Milton Reimers Ranch Park

Master Plan Job#P4027-01 08.14.07



Legend

- Beginner mountain bike Trail
- Intermediate mountain bike Trail
- Advanced mountain bike Trail
- Mountain bike and Hiking bike Trail - Advanced (12')
- Accessible Trails
- Primitive Hiking Trail (width varies)
- Pedestrian Trail (interpretive - Accessible (6'))
- Pedestrian Trail
- Hike and Bike Trails (≥8')
- Multi-use Trail - Natural grade (14')
- Primary road (22')
- Secondary road (16')
- Tertiary road - porous pavement (16')
- Parking
- Pedernales River
- Stream/Drainage
- Parcel boundary
- Park boundary
- Fence
- Existing Structure
- Proposed Structure
- Public Restroom
- Public Composting Restroom
- Scenic Views / Gateway
- Native Riparian Revegetation
- 5 ft. contour



Reimers Ranch Park

Design Pattern Language



Limestone Facades,
Rough Ashlar Pattern



Deep Porches with shallow roof slopes & Wood Columns



"Fachwerk" Wood, Stone & Mortar Facades



Standing Seam
Metal Roofs



Clipped Overhangs



Asymmetrical
Roof Lines



Cedar Shingle
Roofs



Clerestory Vents



Exposed Roof Structure

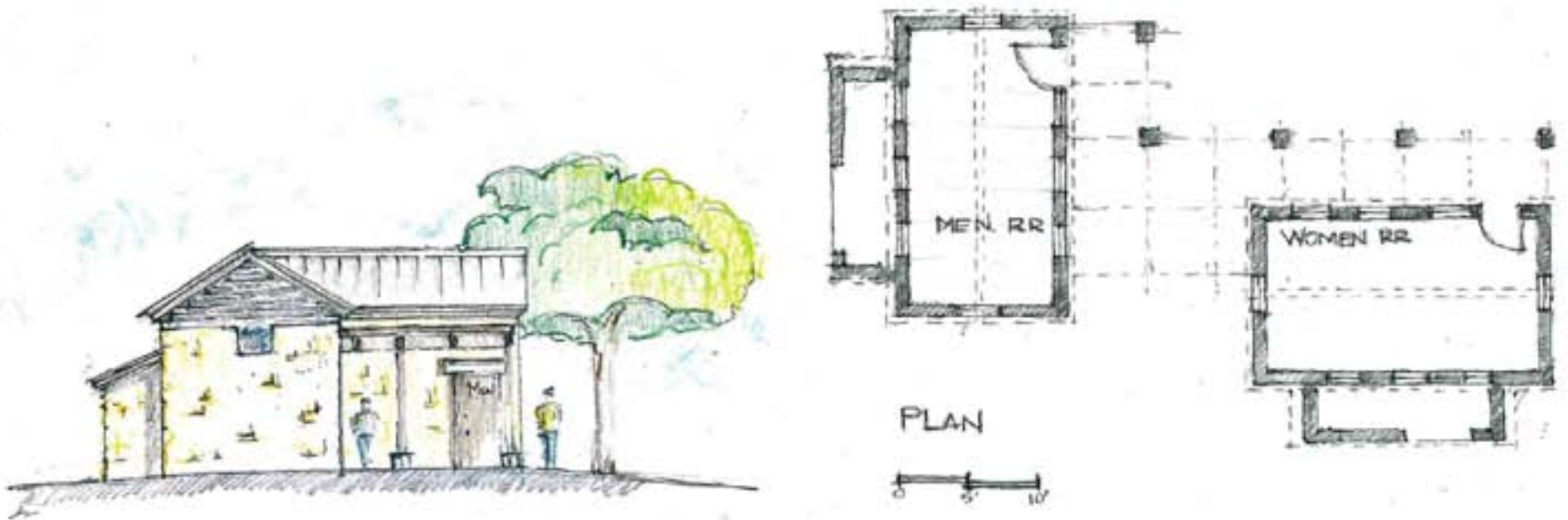
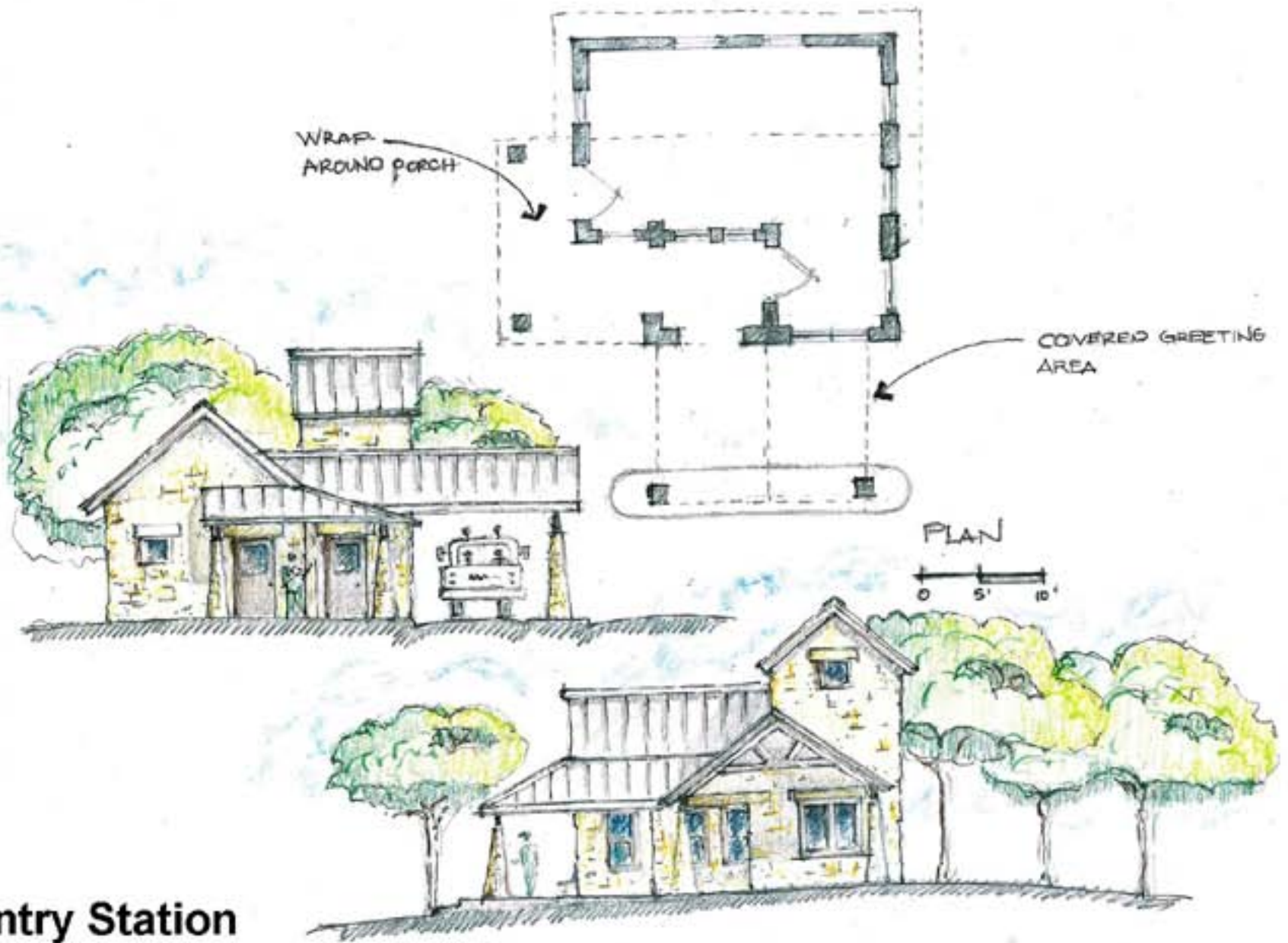


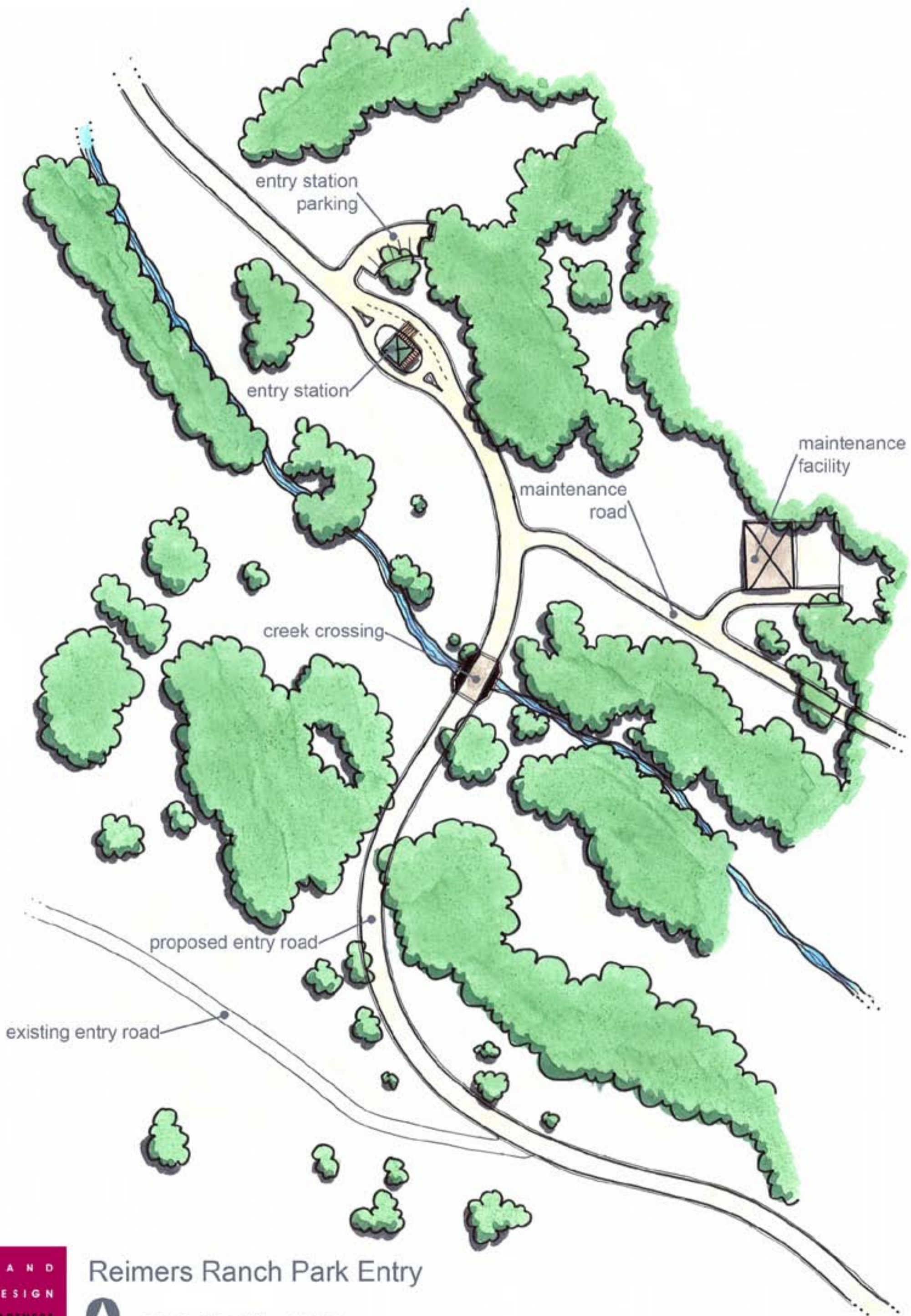
Stone Columns



Two-story Structures With Vertical Elements

Reimers Ranch Park





Reimers Ranch Park Entry



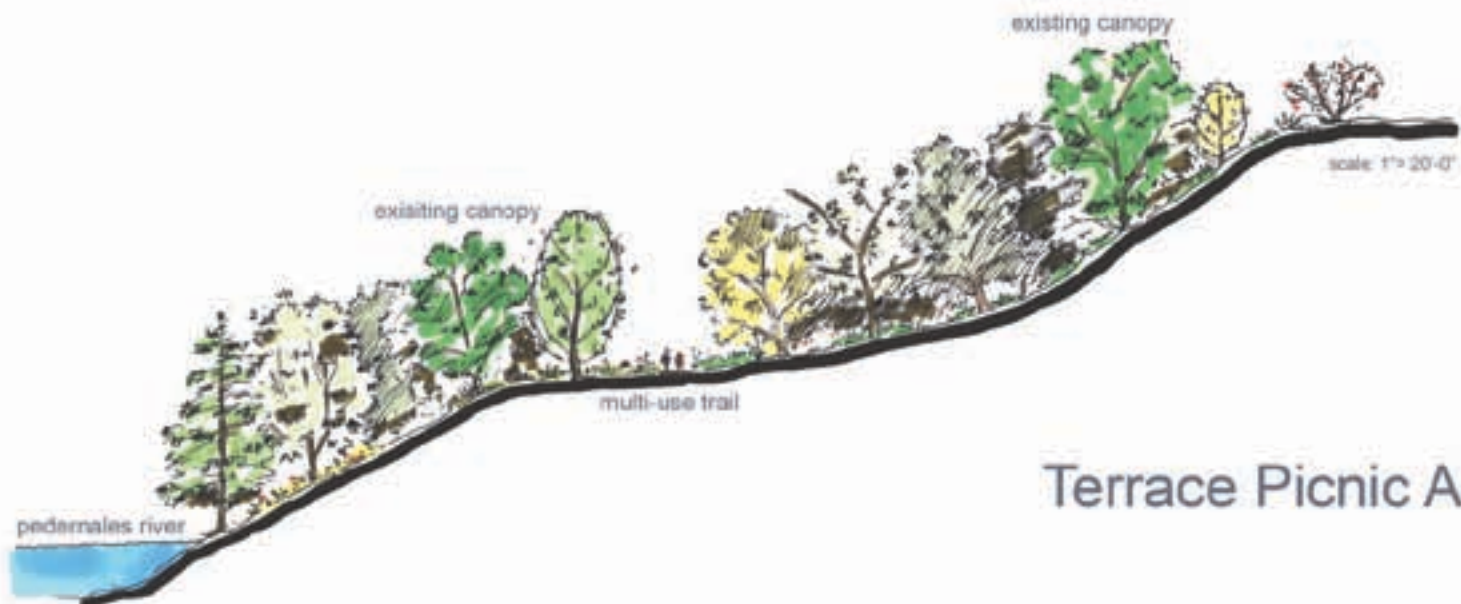
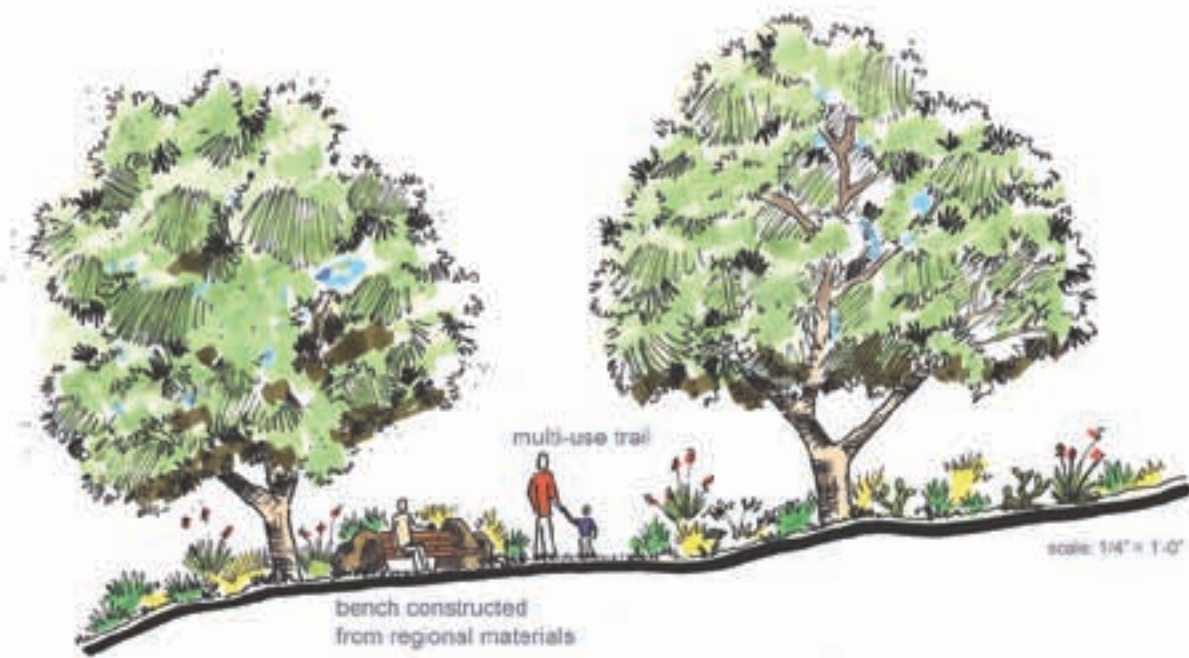
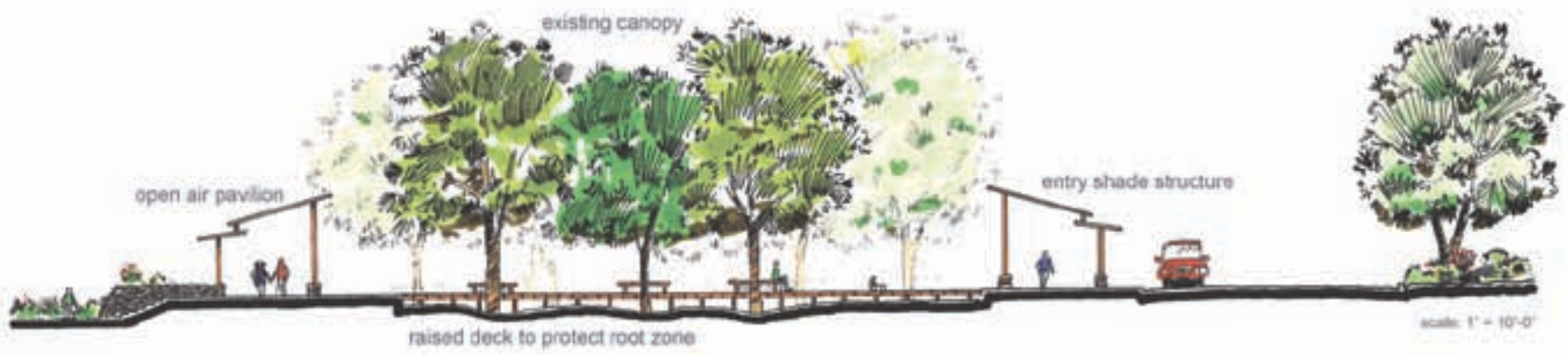
Reimers Pavilion



scale: 1" = 40' 04.16.07

Reimers Canyon

Reimers Pavilion



Terrace Picnic Area

2.6 Phase One Cost Estimate

Estimate of Probable CONTRACTOR Improvement Costs
 Updated: 07.31.07
 Prepared for: Travis County

Bid Item	Item Description	Total Amount
A	Demolition & Site Preparation	191,000
B	Sitework & Paving	927,000
C	Dry Utilities	130,000
D	Storm Drainage	48,000
E	Water Utilities	196,000
F	Wastewater Utilities	177,000
G	Site Furniture	188,000
H	Trails	344,000
I	Buildings	1,068,000
J	Landscaping	118,000
K	Site Amenities (Signage/Seatwalls/Gates/etc.)	768,000
	Subtotal	4,155,000
	15 Percent Estimate Contingency	623,000
	Subtotal	4,778,000
	8 Percent Estimate Escalation	382,000
	TOTAL CONTRACTOR COST	5,161,000



3.0 Development Program

Phase 1 Development Program

Overview: The park facilities that will be constructed in the first phase of development are described in this section. The specific site and building programs that are included in this section are as follows:

Site Programs

- A. Entrance Road Improvements
- B. Entrance Station
- C. Maintenance Yard
- D. Reimers Canyon Activity Center
- E. Mountain Bike Trailhead
- F. Equestrian Trailhead
- G. Star Party Site
- H. Riverbend Activity Center
- I. Riverview Parking
- J. Historic Homestead Mitigation
- K. Amenities
- L. Signage
- M. Trails
- N. Infrastructure

Building Programs

- P. Entrance Building
- Q. Maintenance Barn
- R. Reimers Pavilion
- S. Kiosk
- T. Shade Structures

1-A Entrance Road Improvements

Purpose: Realign park road (at entrance to park proper) to accommodate future entrance through Reimers Reserve Parkland
Facilities: Low water crossing of dry creek
Parking: NA
Amenities: NA
Infrastructure: Paved Surfaces
Comments: None

1-B Entrance Station

Purpose: Collect fees, distribute information
Facilities: Entry Station
Parking: 4-6 staff parking spaces plus 1 handicap parking; short term, pull off spaces for entering, exiting traffic.
Amenities: 1) Bicycle rack 2) Trash Receptacles - 55 gallon drums 3) Signage
Infrastructure: 1) Paved Surfaces 2) Potable Water 3) Onsite Septic 4) Electrical Service 5) Exterior Security Lighting 6) Telephone/Internet Service
Comments: 1) Provide exiting/entering turn-around at station 2) provide protective bollards or reinforced concrete to protect building from getting hit by vehicles 3) Provide telecommunications for emergency and safety communication

1-C Maintenance Yard

Purpose: Service and store vehicles, maintenance equipment, and supplies.
Facilities: 1) Maintenance Building 2) Storage Yard 3) Outdoor Break Area 4) Parking Area
Parking: 12 staff parking spaces plus 1 accessible parking space
Amenities: 1) Picnic Table 2) Trash Receptacles - 55 gallon drums
Infrastructure: 1) Paved Surfaces 2) Potable Water 3) Onsite Septic 4) Electrical Service 5) Exterior Security Lighting 6) Telephone/Internet Service Paved Surfaces
Comments: 1) Motion activated, solar powered, shielded security lighting, not mounted on building 2) Yard: Approx 3200 SF 3) Maintenance Building: Approx 4,200 SF

1-D Reimers Canyon Activity Center

Purpose: Orient visitors to park, interpret cultural and natural resources, access Nature Trail, Hike and Bike Trail, and Climbing Trail, and informal gathering and picnicking spaces.
Facilities: 1) Reimers Pavilion 2) History Kiosk 3) Courtyard/Deck 4) Picnic Area 5) Plumbed Restroom - multiple users 6) Climbing Trailhead to canyon 7) Nature Trail 8) Hike and Bike Trail 9) Shade Structures (4 small at Climbing Trailhead)
Parking: 1) Main Parking Area: 40 plus 40 overflow spaces (2 accessible spaces) 2) Climbing Trailhead Parking: 40 plus 40 overflow parking spaces (2 accessible parking) 3) Bus Parking: 2 spaces at main parking area 4) Gate at entrance
Amenities: 1) Picnic Tables 2) Signage 3) Bicycle Rack(s) 4) Seating 5) Drinking fountain 6) Trash Receptacles - 55 gallon drums
Infrastructure: 1) Paved Surfaces 2) Potable Water 3) Onsite Septic 4) Electrical Service to Restrooms
Comments: None 1) Land, Water, Sky to give \$50,000 for Family History Kiosk 2) Multi-use trail to access bouldering area.

1-E Mountain Bike Trailhead

Purpose: Staging area for mountain biking
Facilities: 1) Plumbed Multi-user Restroom with Showers 2) Shade (from trees or structures)
Parking: 1) 40 plus 40 overflow spaces (2 accessible spaces) 2) gate at Primary Road
Amenities: 1) Picnic Tables 2) Signage 3) Bicycle Rack(s) 4) Seating 5) Drinking fountain 6) Trash Receptacles (55 gallon drums)
Infrastructure: 1) Paved Surfaces 2) Potable Water 3) Onsite Septic 4) Electrical Service to Restrooms
Comments: 1) Kiosk: History of trails, volunteer contacts; rules and regulations 2) Dry Utilities: Low voltage lighting associated with pavilion; on/off switch, timer and daylight sensor.

3.0 Development Program

1-F Equestrian Trailhead

Purpose: Equestrian trailer parking to access multi-use loop trail
Facilities: NA
Parking: No improved parking
Amenities: 1) Signage 2) Trash Receptacles (55 gallon drums)
Infrastructure: Water spigot
Comments: None

1-G Star Party Site

Purpose: Place to hold star parties for the general public hosted by the Austin Astronomical Association; special permits for night use at the park will be granted to those members of the Association that host star parties
Facilities: None
Parking: Informal parking
Amenities: None
Infrastructure: Electrical service
Comments: 1) Site to be determined 2) parking must be close to set-up site (heavy equipment to lug)
3) site should be open, free of trees that block the horizon.

1-H Riverbend Activity Center (Bluff, Mid Terrace, and Riverside)

Purpose: Access to river and mid- terrace for fishing, "formal", informal picnicking, hiking, biking
Facilities: 1) Compost Toilet 2) Pedestrian Trail to River 3) Mid-terrace Picnic Area 4) Unimproved paddleboat launch
Parking: 1) Bluff - 40 plus 40 overflow spaces (2 accessible spaces) 2) Mid Terrace - (2 accessible parking, drop off and staging only 3) Defined perimeter - gas pipes and cables 4) Gate(s) at primary road
Amenities: 1) Picnic Tables - cluster, individual 2) Signage 3) Bicycle Rack(s) 4) Trash Receptacles - 55 gallon drums
Infrastructure: 1) Paved Surfaces
Comments: 1) Mid-terrace turn-around - 22' radius 2) Informal parking for ADA access in river channel
3) Connect to adjacent trails 4) provide turn-around on bluff 6) locate tables for shade, views

1-I Riverview Parking

Purpose: Trailhead parking for primitive, dual purpose, and multi-use trails
Facilities: Restroom (single)
Parking: 2 parking lots@ 20 spaces plus overflow areas (1 accessible space at each parking lot)
Amenities: 1) Bicycle rack 2) Trash Receptacles - 55 gallon drums 3) Signage
Infrastructure: 1) Paved Surfaces
Comments: None

1-J Historic Homestead (mitigation)

Purpose: Mitigate as required by further assessment of historic value of house, barn, and corral
Facilities: Structures as may be required to control access to structures
Parking: NA
Amenities: 1) Picnic Tables 2) Signage 3) Bicycle Rack(s) 4) Trash Receptacles - 55 gallon drums
Infrastructure: NA
Comments: Mitigation structures to be compatible with homestead character

1-K Amenities

Purpose: Support recreational activities
Facilities: NA
Parking: NA
Amenities: 1) Picnic Tables - handicap accessible 2) Benches 3) Bicycle Racks 4) Trash Containers - 55 gallon drums
Infrastructure: NA
Comments: Native materials or materials that are indigenous or harmonious to the area

1-L Signage

Purpose: Provide interpretive information, rules and regulations, way-finding
Facilities: NA
Parking: NA
Amenities: 1) Trail head signage 2) Mile markers on mountain bike trail 3) Park Rules and Regulations
4) Way-finding
Infrastructure: NA
Comments: Constructed of durable materials that are harmonious in color with the native environment.

3.0 Development Program

1-M Trails

Purpose: Access to river and mid- terrace for fishing, "formal," informal picnicking, hiking, biking
Facilities: 1) Compost Toilet 2) Pedestrian Trail to River 3) Mid-terrace Picnic Area 4) Unimproved paddleboat launch
Parking: 1) Bluff - 40 plus 40 overflow spaces (2 accessible spaces) 2) Mid Terrace – (2 accessible parking, drop off and staging only 3) Defined perimeter - gas pipes and cables 4) Gate(s) at primary road
Amenities: 1) Picnic Tables – cluster, individual 2) Signage 3) Bicycle Rack(s) 4) Trash Receptacles - 55 gallon drums
Infrastructure: 1) Paved Surfaces
Comments: 1) Mid-terrace turn-around - 22' radius 2) Informal parking for ADA access in river channel 3) Connect to adjacent trails 4) provide turn-around on bluff 6) locate tables for shade, views

1-N Landscape

Purpose: Mitigate as required by further assessment of historic value of house, barn, and corral
Facilities: Structures as may be required to control access to structures
Parking: NA
Amenities: 1) Picnic Tables 2) Signage 3) Bicycle Rack(s) 4) Trash Receptacles - 55 gallon drums
Infrastructure: NA
Comments: Mitigation structures to be compatible with homestead character

1-O Infrastructure

Purpose: Support recreational activities
Facilities: NA
Parking: NA
Amenities: 1) Picnic Tables – handicap accessible 2) Benches 3) Bicycle Racks 4) Trash Containers – 55 gallon drums
Infrastructure: NA
Comments: Native materials or materials that are indigenous or harmonious to the area

1-P Pump Truck

Purpose: Provide a new and different biking opportunity at Reimers Park.
Facilities: NA
Parking: Utilize parking at Mountain Bike Trailhead
Amenities: NA
Infrastructure: NA
Comments: Approximately 100"x200'; will be user designated and constructed.

1-Q Johnny's Homestead

Purpose: Wildlife viewing, staging area for guided Pogue Springs Preserve tours; rest stop for hikers
Facilities: 1) Shade structure(s) 2) Wildlife watering hole and viewing blind (see Government Canyon) 3) Composting restroom 4) Refurbished windmill
Parking: NA
Amenities: 1) Signage, Interpretative media 2) Picnic tables 3) Trash receptacles - 55 gallon drum with lid
Infrastructure: NA
Comments: Consider incorporating Chimney Swift towers into architecture

3.0 Development Program

Building	Assignable Spaces	Environmental Conditions	Infrastructure	Furniture/Equipment	Design Considerations	Spatial Relationships
Entry Building Collect fees, distribute information, answer questions	Staff work area 320 SF Break area 80 SF Staff restroom (single user) 80 SF Mechanical/Electrical 20 SF	HVAC 72-75 degrees 30-50 foot-candles Durable, easily maintained finishes	Primary road access 3-5 spaces (staff and visitor) Water and wastewater Electrical service Telephone, data, and radio service	Fire extinguisher Cash Register Storage for maps, forms, park literature First aid supplies Microwave oven Refrigerator Bar sink Work table Seating for 2-3 Lockable storage cabinet	Visible connection to park entrance (road) Drive up window to allow staff and visitors to interact during inclement weather Accommodates 1-2 staff generally, occasional standing meeting space for 5-6 people Park visitors will not normally be invited into building Work area to have dual means of emergency egress Maximize natural light	Parking, entry drive
Maintenance Barn	Vehicle/Equipment Work Area 3000 SF Write-up/Record/Break 920 SF Staff Restroom (uni-sex) 80 SF Secure Storage 200 SF	Maintenance areas not conditioned, natural ventilation Administrative areas conditioned 30-50 foot-candles Durable, easily maintained finishes	Primary road access Water and wastewater Electrical service Telephone, data, and radio service	Fire cabinet (flammables) 10' cabinet/counter/work bench, Fire extinguisher first aid supplies Microwave oven Refrigerator Bar sink, Work table Seating for 2-3 Lockable file storage	Clear-span structure with (2) opposing overhead doors for vehicle access Accessible uni-sex restroom for staff Accommodates 1-2 staff generally, occasional standing meeting space for 5-6 people Park visitors will not normally be invited into building Work area to have min. two means of emergency egress Maximize natural light and ventilation in maintenance areas Outside equipment storage yard Primary location for recycle and trash disposal	Easily accessed but not visible
Restroom (Multi)	Men's restroom 225 SF Women's restroom 225 SF Plumbing Chase 100 SF	Not conditioned, natural ventilation 30-50 foot-candles (for security), natural illumination during daytime use	Secondary road access Water and wastewater Electrical service Associated parking	Men: 2 WC, 1 urinal, 2 lavatories Women: 3 WC, 2 lavatories Toilet accessories Bench Trash receptacle Changing table	Maximize natural light and ventilation Durable, easily maintained finishes and fixtures Accommodate 100 users per day (size may change with projected use) Vandal resistant finishes and fixtures Visual privacy/safe, defensible space	Locate at Reimers Activity Center and Mountain Bike Trailhead
Restroom (single) Phase 2	Men's restroom 100 SF Women's restroom 100 SF Plumbing Chase 50 SF	Not conditioned, natural ventilation 30-50 foot-candles, natural illumination only	Secondary road access Septic field, holding tank or composting waste system Associated parking	Men: 1 WC, 1 lavatory Women: 1 WS, 1 lavatory Toilet accessories Trash receptacle	Maximize natural light and ventilation Durable, easily maintained finishes and fixtures Accommodate 30 to 50 users per day (size may change with projected use) Vandal resistant finishes and fixtures Visual privacy/safe, defensible space	Locate at Riverbend, and Riverview parking lots
Pavilion	Covered congregational area 400 SF	Natural ventilation Durable, easily maintained finishes	Secondary road access Electrical service Associated parking	Seating	Site to maximize natural ventilation	Locate Reimers Activity Center proximate to parking, restrooms, picnic area, courtyard, and history kiosk
Shade Structure	Covered congregational area 320 SF	Natural ventilation Durable, easily maintained finishes	Secondary road access Associated parking	Seating, tables	Site to maximize natural ventilation	Locate at climbing and mountain biking trailheads



3.0 Development Program

Phase 2 Development Program

Overview: The park facilities that will be constructed in the second phase of development or as part of a successful Texas Parks and Wildlife Outdoor Recreation Grant award are described in this section. The specific site programs that are included in this section are as follows:

Site Programs

- A. Nature Interpretation
- B. Riverview Facilities
- C. Expanded Rock Climbing Area
- D. Landscape (see program above)

Building Programs

- E. Restroom (single) See Building Program on previous page

2-A Nature Interpretation

Purpose: Stimulate interest in and understanding of natural resources

Facilities: 1) Interpretive media for self-guided nature trail 2) Bird blind (for children) 3) Chimney Swift tower

Parking: NA

Amenities: 1) Signage, Interpretation media

Infrastructure: NA

Comments: Consider incorporating Chimney Swift towers into architecture

2-B Riverview Site Improvements

Purpose: Provide trailhead amenities

Facilities: 1) Restroom (single)

Parking: NA

Amenities: 1) Signage 2) Picnic Tables

Infrastructure: NA

Comments:

2-C Expanded Rock Climbing Area

Purpose: Expanded climbing opportunities in the park; alleviate demand at existing climbing areas

Facilities: NA

Parking: Utilize Riverview parking #2

Amenities: Designated and approved climbing routes

Infrastructure: NA

Comments: Provide staging areas at the base of climbing areas

Phase 3 Development Program

Overview: The park facilities that will be constructed in the first phase of development are described in this section. The specific site and building programs that are included in this section are as follows:

Site Programs

- A. The Commons
- B. Landscape (see program above)

Building Programs

- C. Restroom (single)/(see building program on previous page)

3-A The Commons

Purpose: Informal play fields; venue for special events

Facilities: 1) Plumbed Restrooms

Parking: Number of spaces to be determined

Amenities: 1) Signage 2) Picnic tables 3) Trash receptacles - 55 gallon drum with lid.

Infrastructure: 1) Paved Surfaces 2) Potable Water 3) Onsite Septic 4) Electrical Service 5) Lighting at restrooms only

Comments: 1) Grade existing terraces 2) Repair and extend existing rock wall to fully line perimeter

3-B Park Entrance (at Hamilton Pool Road)

Purpose: Realign intersection with Hamilton Pool Road

Facilities: NA

Parking: NA

Amenities: Signage - Park Name

Infrastructure: Paved Surfaces

Comments: Restore disturbed areas

4.0 Site Inventory and Analysis

The following graphics are provided below:

4.1 Terrain Analysis

- Milton Reimers Ranch Park and Pogue Springs Preserve Terrain Analysis

4.2 Milton Reimers Ranch Park Analysis

- Photographic Survey Aerial
- Photographic Survey Photos
- Site Analysis Map

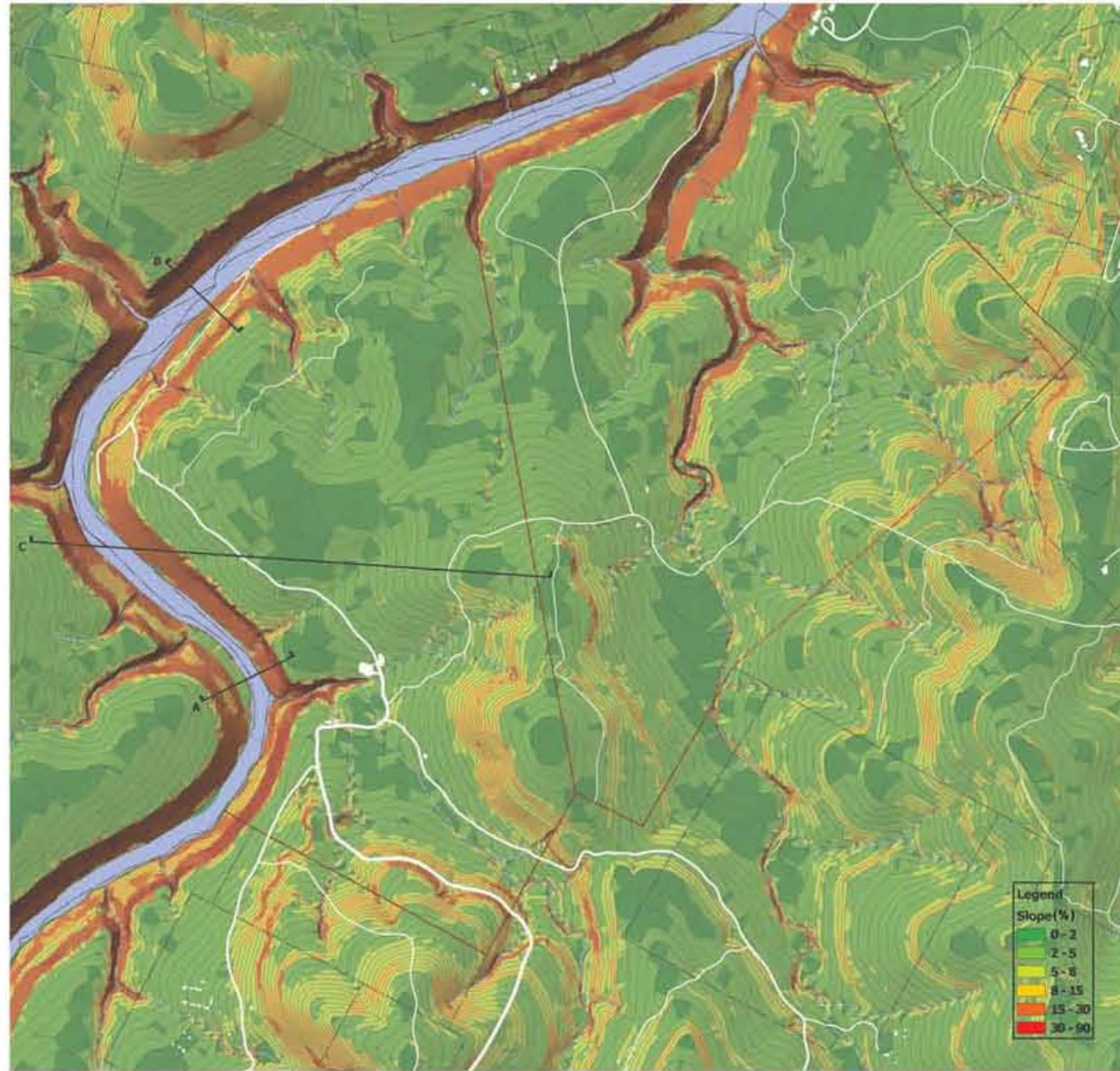
4.3 Pogue Springs Preserve Analysis

- Photographic Survey Aerial
- Photographic Survey Photos
- Site Analysis Map

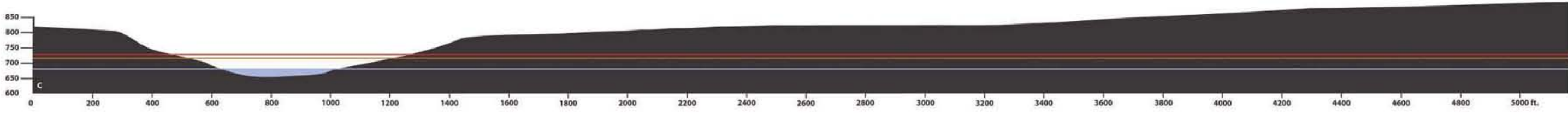
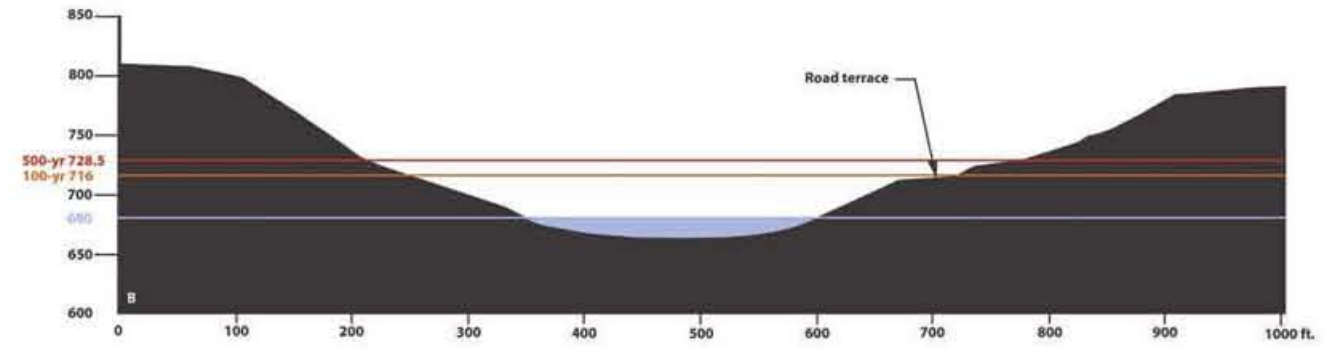
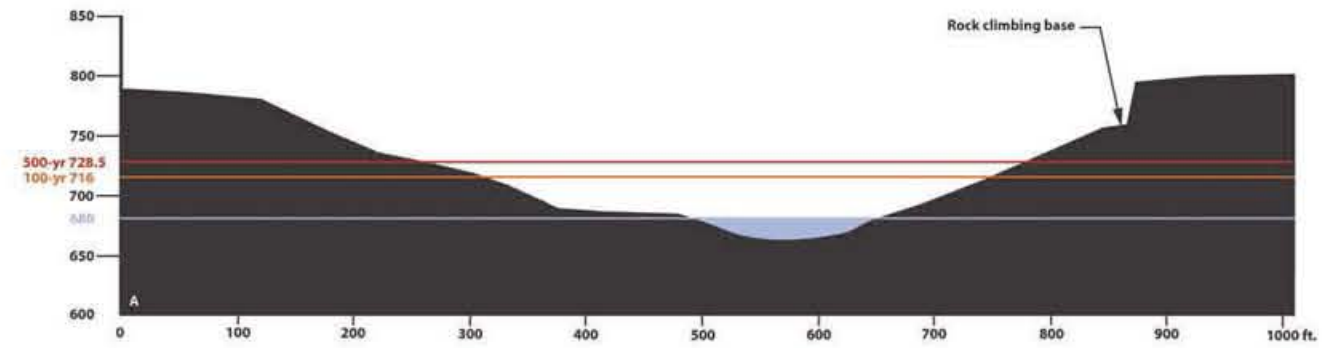
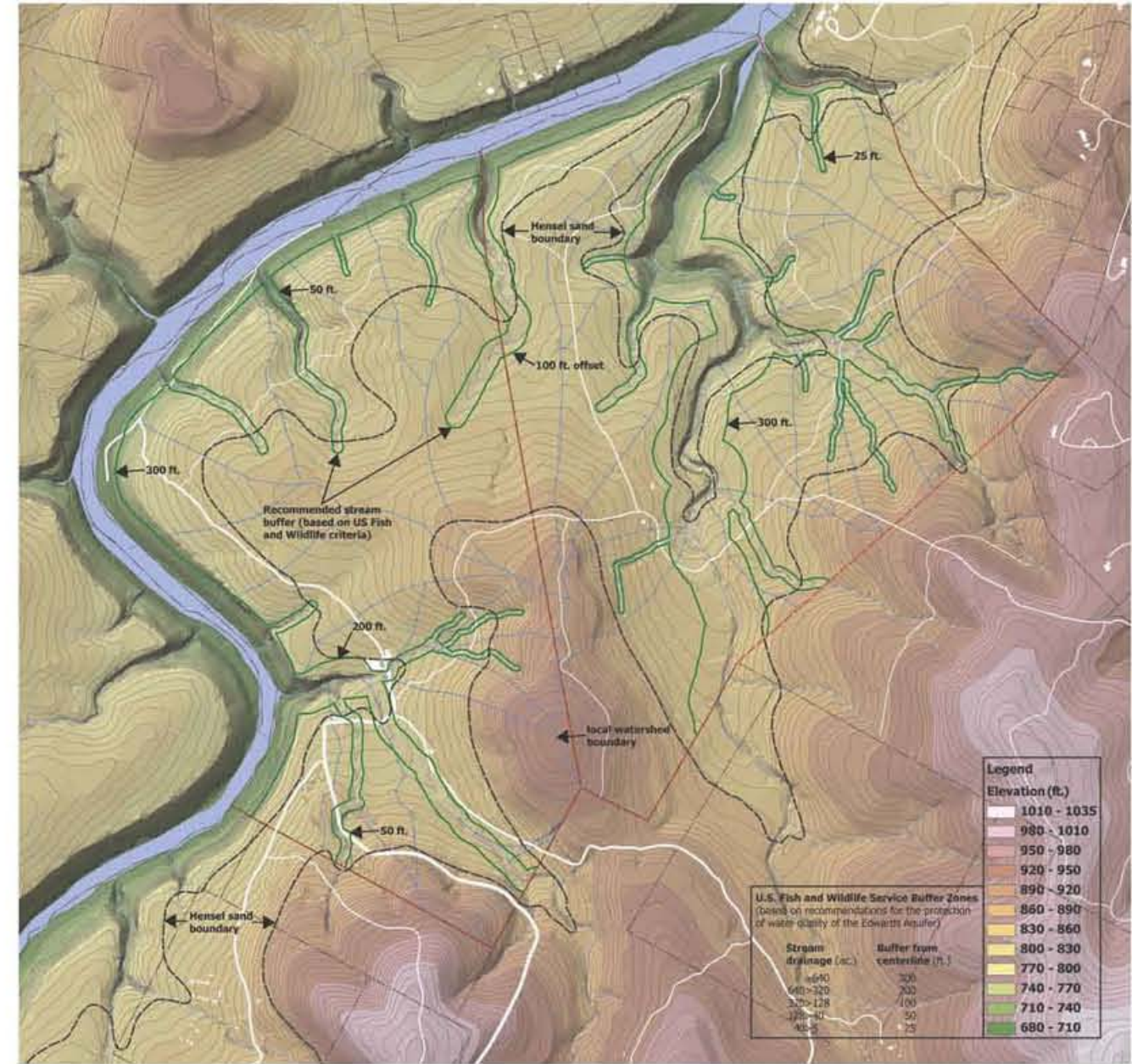


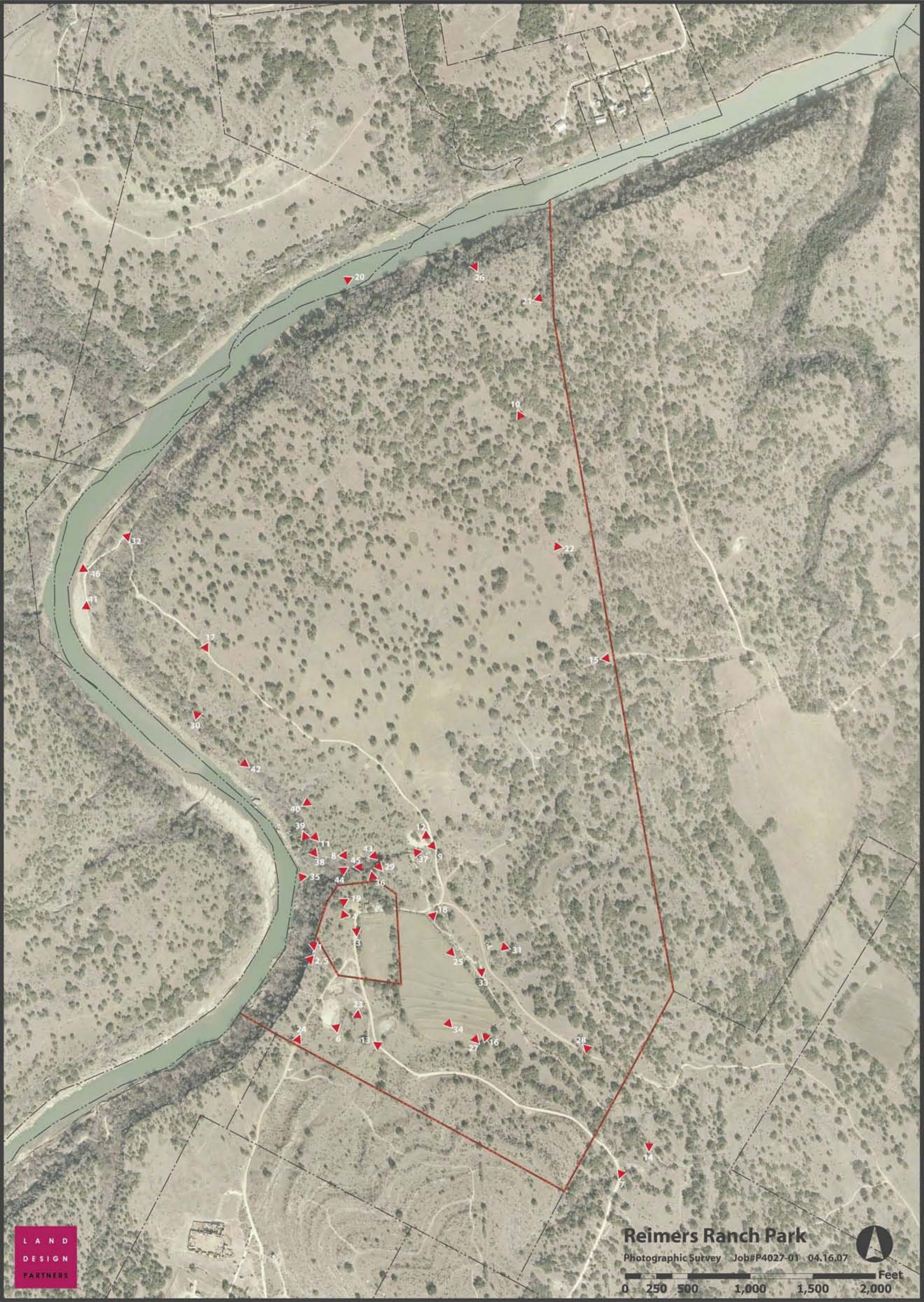


Slope & sections



Stream buffers, hensel sand & elevation

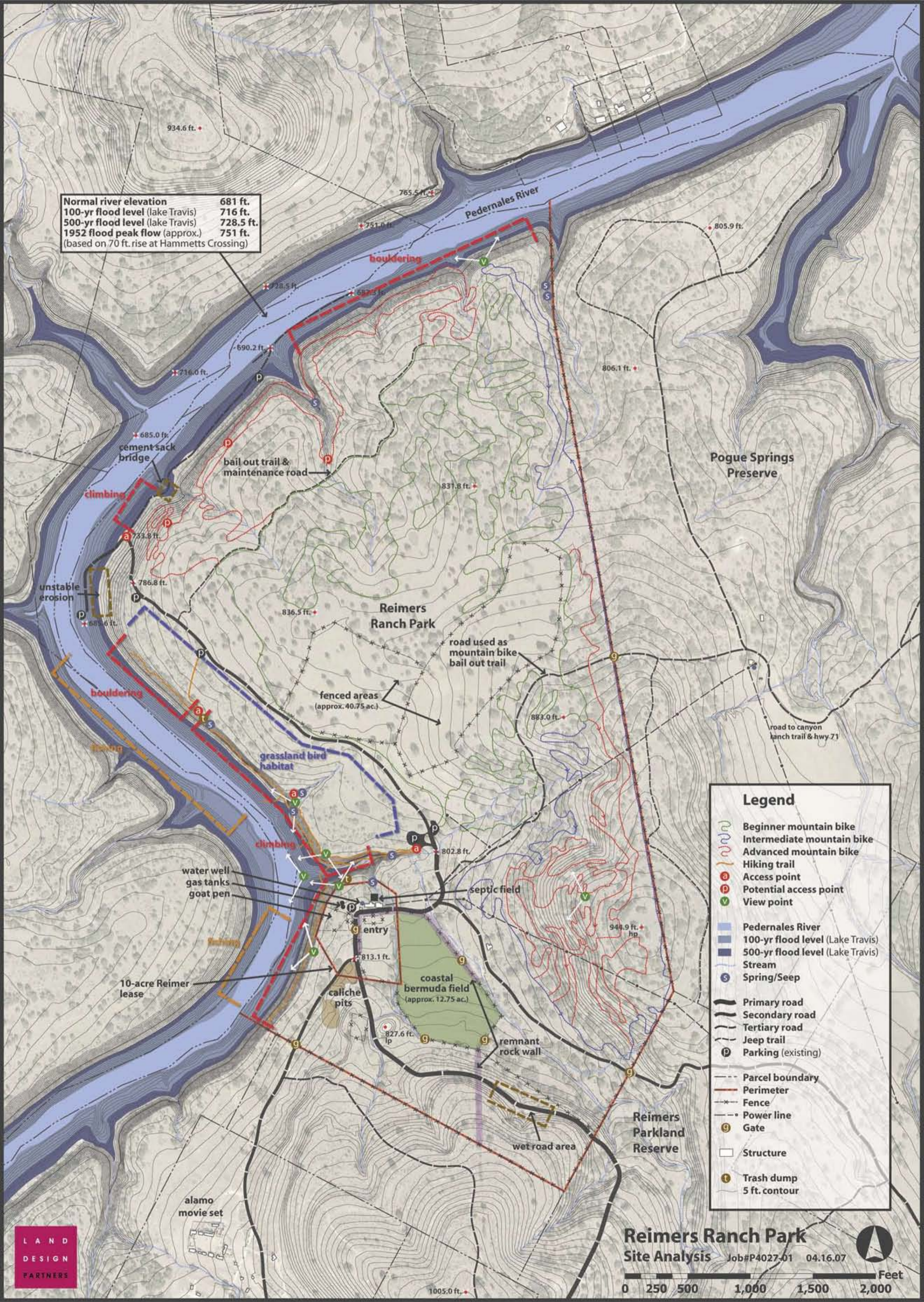




Reimers Ranch Park
Photographic Survey Job#P4027-01 04.16.07



Normal river elevation 681 ft.
 100-yr flood level (lake Travis) 716 ft.
 500-yr flood level (lake Travis) 728.5 ft.
 1952 flood peak flow (approx.) 751 ft.
 (based on 70 ft. rise at Hammetts Crossing)

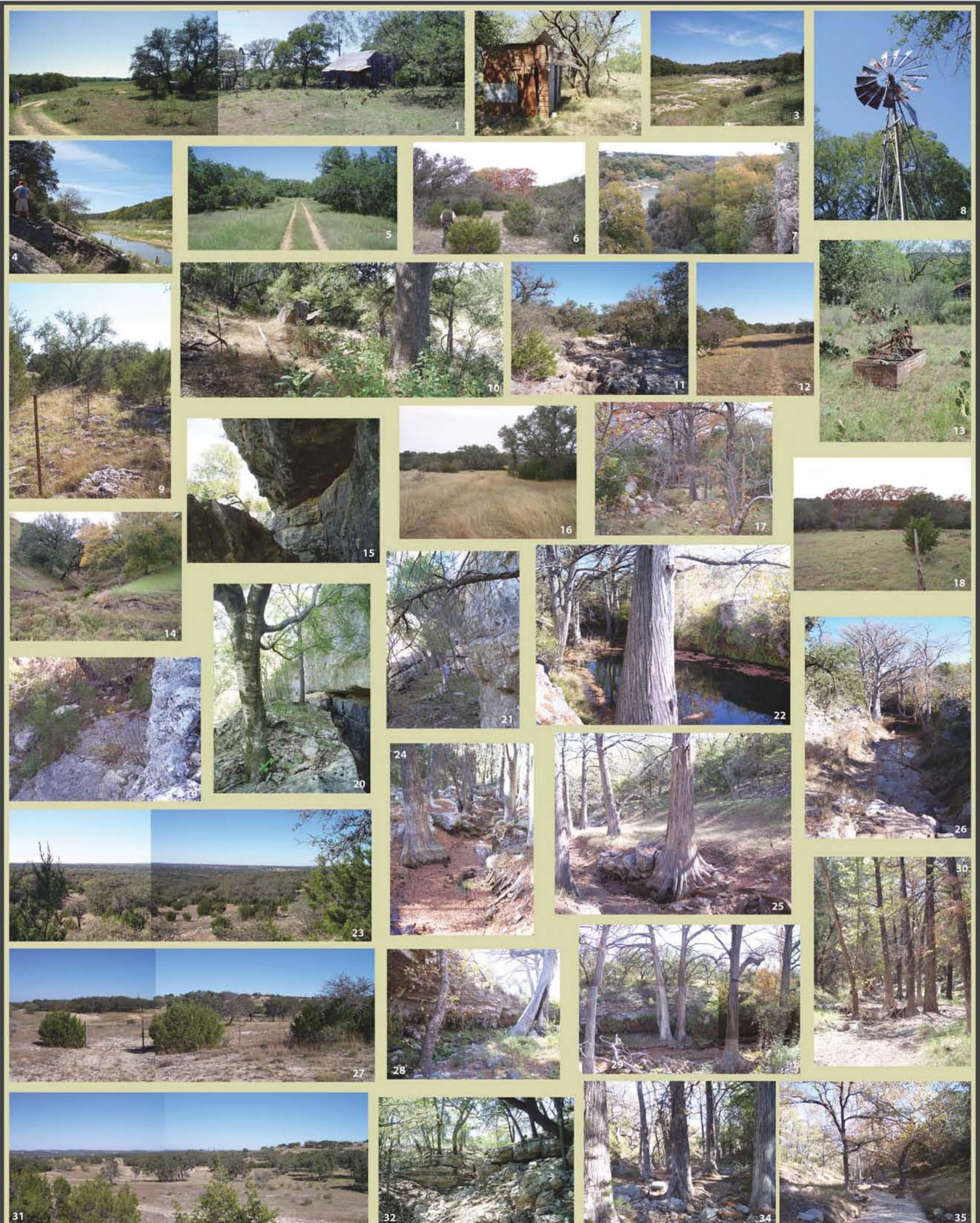


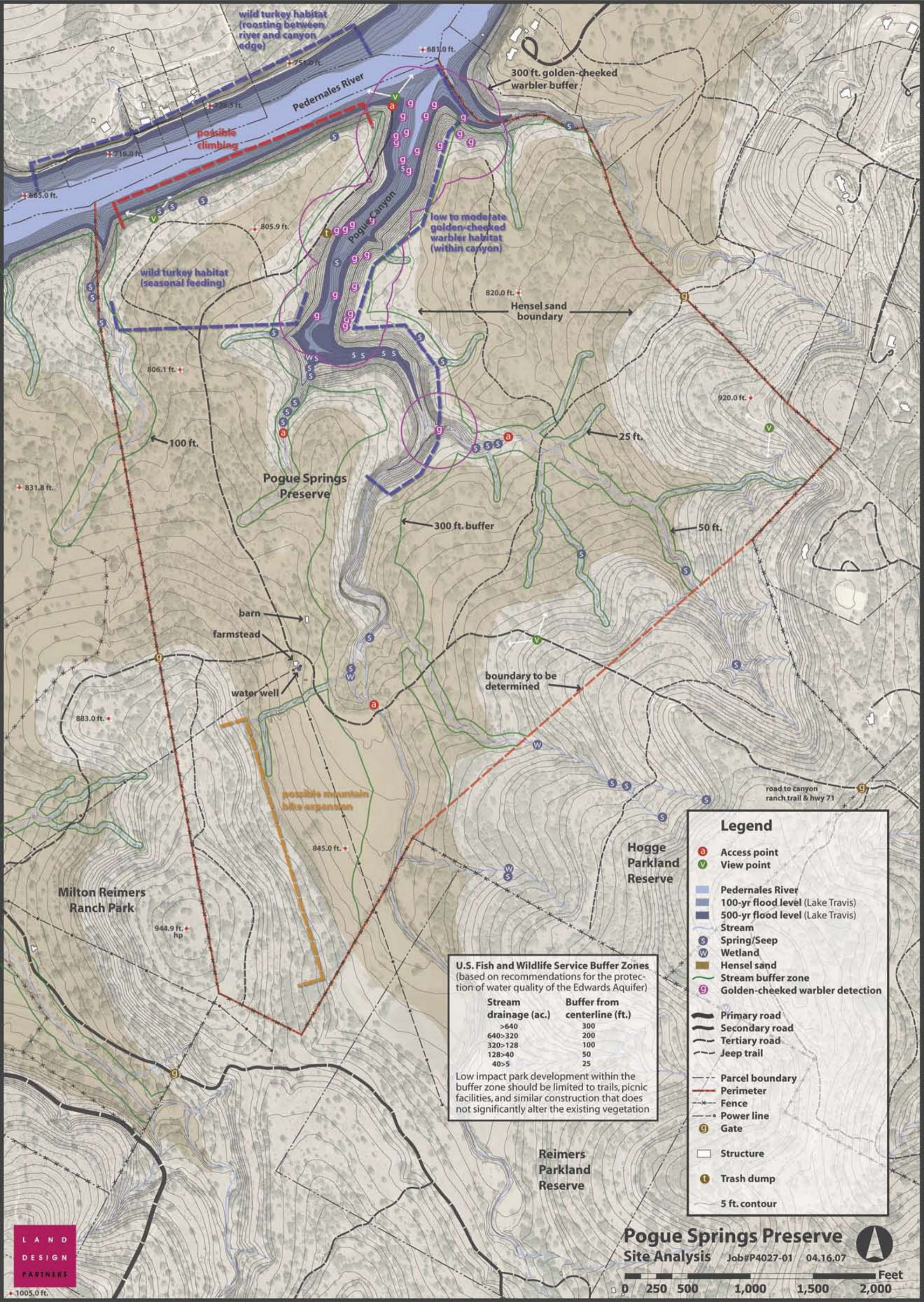
Legend

- Beginner mountain bike
- Intermediate mountain bike
- Advanced mountain bike
- Hiking trail
- a Access point
- p Potential access point
- v View point
- Pedernales River
- 100-yr flood level (Lake Travis)
- 500-yr flood level (Lake Travis)
- Stream
- s Spring/Seep
- Primary road
- Secondary road
- Tertiary road
- Jeep trail
- p Parking (existing)
- Parcel boundary
- Perimeter
- x Fence
- Power line
- g Gate
- Structure
- t Trash dump
- 5 ft. contour









wild turkey habitat
(roosting between
river and canyon
edge)

300 ft. golden-cheeked
warbler buffer

possible
climbing

low to moderate
golden-cheeked
warbler habitat
(within canyon)

wild turkey habitat
(seasonal feeding)

820.0 ft. +
Hensel sand
boundary

Pogue Springs
Preserve

300 ft. buffer

barn
farmstead
water well

boundary to be
determined

Milton Reimers
Ranch Park

Hogge
Parkland
Reserve

road to canyon
ranch trail & hwy 71

Legend

- a Access point
- v View point
- Pedernales River
- 100-yr flood level (Lake Travis)
- 500-yr flood level (Lake Travis)
- Stream
- s Spring/Seep
- w Wetland
- Hensel sand
- Stream buffer zone
- g Golden-cheeked warbler detection
- Primary road
- Secondary road
- Tertiary road
- - - Jeep trail
- - - Parcel boundary
- Perimeter
- x Fence
- Power line
- g Gate
- Structure
- t Trash dump
- 5 ft. contour

U.S. Fish and Wildlife Service Buffer Zones
(based on recommendations for the protection of water quality of the Edwards Aquifer)

Stream drainage (ac.)	Buffer from centerline (ft.)
>640	300
640>320	200
320>128	100
128>40	50
40>5	25

Low impact park development within the buffer zone should be limited to trails, picnic facilities, and similar construction that does not significantly alter the existing vegetation

Reimers
Parkland
Reserve

Pogue Springs Preserve
Site Analysis Job#P4027-01 04.16.07



5.0 Appendix

5.1 Stakeholder Interests - Reimers Planning Group

Meeting Minutes	User Group* Interest:
Southwest Metro Park	Park Maintenance and Operation

Travis County Project No.: 06AE0187LP
Land Design Partners Project No.: P4027-01

Meeting Date: September 15, 2006– 8:30 PM

Attendees: Janene Rowan, TTravis County
Christy Gallik, Travis County
Michael Brewster, Travis County
Crystal Funke, Travis County
Dennis Brown, Travis County
Brent Luck, Land Design Partners (author)

The conclusions and action items from the above referenced meeting have been categorized into four main categories for easy reference: 1. Desired Program Amenities, 2. User Concerns, 3. How and where do they currently use the land? 4. Miscellaneous or General Observations.

1. Desired Program Amenities

- a. A bird observatory like Pedernales Falls State Park is desired; Reimers Ranch Park could be a destination point for birders. This could be located by a windmill, needs to be accessible, and has to have water. The observatory could be built as a bird blind.
- b. An astronomical observatory would be a nice addition. Canyon of the Eagles was sited as a great example. That facility draws in 5000/ year. Design factors should include location (not around many tall trees, no car or areas lights shining into the area, and a short walk from the car).
- c. An accessible trail system for hiking is desired.
- d. An Education/Visitors Retreat Center would be perfect. This building should be a stand-alone and like McKinney Roughs, but not quite to that scale.
- e. An Administration Office should include three offices and one classroom/conference meeting room. This building could be placed on already disturbed land, such as the gravel pits areas.
- f. A maintenance storage area for equipment is needed; it should be screened from the public.
- g. A fee booth should be located at the boundary of the park. Waivers for climbing are also handled at the booth.
- h. An area could be set aside for primitive camping on an individual basis. Camping would not be open to the general public but would be accessible by obtaining a permit.
- i. Concentrated areas should be designated for parking and then parking should be prohibited in all other areas of the park.
- j. Those in attendance favored an upper river road and converting the existing river road to pedestrian only.
- k. Could bison be used to keep the grazing in check? The name implies a ranch and grazing animals.
- l. A kiosk or information center is desired.

2. User Concerns

- a. The overall development of the park should follow the “FEEE” acronym below:
 - F- “Fun” - Access to rivers, overlooks.
 - E- “Environmental” – Improvements should work with the environment, example – water harvesting, conservative use of water, solar lighting, etc.
 - E- “Educational” – Via trail interpretive signage or outdoor classrooms.
 - E- “Economic Efficiency” – The improvements from a maintenance standpoint should be simple and easy to use.
- b. Safety is concern – How does medical staff get people in and out of the park, particularly Reimers Canyon?
- c. Flash flooding along the river is a concern. There is a need for better gauging of the river conditions upstream.
- d. The condition and upkeep of the road is a problem. There is really no entry sequence so people wonder “ Are we there yet?”
- e. It gets dark really quick, especially in the canyons.
- f. If portions of the park are open for nighttime use, please do not put exterior lights adjacent to the building. They become bug magnets.
- g. Currently, there is no place for the casual visitor to go once inside the park.
- h. The road to Pogge Springs is in bad condition. Visitors to the canyon have to hike ¾ -mile to get to the canyon because the roads will not permit closer access.

3. How and where do they currently use or want to use the land?

- a. It was emphasized that Reimers Ranch is a park and not a preserve. It should be used as such, albeit with a sensitive use of the land.
- b. Climbers like access to the rock climbing areas by using the roadway to the river that has the barrier across the road.

4. Misc. or General Observations

- a. There used to be more parking at the Hamilton Pool Nature Preserve before it was reclaimed.
- b. The different boundaries on the map delineating the different designated areas of County owned land (example, the park, the preserve and the reserve lands) may be adjusted to meet the user and environmental needs of the park, the preserve and the reserve lands.
- c. A new entrance road to the park may be constructed as part of a conservation development on the reserve land to the east of the park, so the park needs to be planned to accommodate this possible change in the future.

End of Minutes



Meeting Minutes	User Group Interest:
Southwest Metro Park	Mountain Biking

Travis County Project No.: 06AE0187LP
Land Design Partners Project No.: P4027-01

Meeting Date: September 18, 2006– 3:30 PM

Attendees: **David Cordosa**
Wendy Scaperotta, Travis County
Brent Luck, Land Design Partners (author)

The conclusions and action items from the above referenced meeting have been categorized into four main categories for easy reference: 1. Desired Program Amenities, 2. User Concerns, 3. How and where do they currently use the land? and 4. Miscellaneous or General Observations.

1. Desired Program Amenities

- a. Narrower primitive trails are preferred.
- b. An outdoor shower is preferred.
- c. A kiosk or the display of a trails map is needed.
- d. A gathering pavilion is desired.
- e. A “pump track” like the one at Camp Eagle would be a nice addition. (A pump track is essentially a mini – BMX course that is approximately 40’ x 50’).
- f. Any improvements should be designed with a “Hill Country” look.
- g. The bikers have grass roots events at the site about four times a year; the design of the parking and staging for the biking trails needs to keep this in mind.

2. User Concerns

- a. The trails should be left like they are at Reimers.
- b. It is not a real concern if the east side of the hill is developed for trail or not.
- c. Reducing the amount of trails out on site would cause some heartburn in the biking community.
- d. Deleting the double black expert trails and replacing them with hiking trails would not be a huge concern.
- e. Horse traffic will cause a lot of wear and tear on the trails. It is a bike park.

3. How and where do they currently use the land?

- a. All of the bike trails on the property are located east of the road to the river and the eastern property line.
- b. The existing trails are for beginner and intermediate use.
- c. The bike trails (weather dependent) get used year around.
- d. The trails were built at 6”. The trails are narrower and have a one-way designation.
- e. Bikers use the trail for approximately 2 hours on average.

4. Misc. or General Observations

- a. The trails are very winding out at Reimers Ranch because there is a lack of features in the upland portion of the park.
- b. Reimers Ranch will not ever be a biking destination point because of the lack of terrain change.
- c. Mr. Cordosa has been a climber out at Reimers since 1987. The trails were cut in approximately 4 years ago.

End of Minutes

5.0 Appendix

Meeting Minutes	User Group Interest:
Southwest Metro Park	Reimer Family History

Travis County Project No.: 06AE0187LP
Land Design Partners Project No.: P4027-01

Meeting Date: September 18, 2006– 1:30 PM

Attendees: **Dianne Watson**
Wendy Scaperotta, Travis County
Dan Sharp, Land Design Partners
Brent Luck, Land Design Partners (author)

The conclusions and action items from the above referenced meeting have been categorized into four main categories for easy reference: 1. Desired Program Amenities, 2. User Concerns, 3. How and where do they currently use the land? and 4. Miscellaneous or General Observations.

1. Desired Program Amenities

- a. An open-air pavilion would be nice to see out at the ranch.
- b. Incorporating the history of the ranch into design components and interpretive signage would be a nice touch.

2. User Concerns

- a. Improvements should be designed with a light touch on the land. The dry-stacked rock fences are a great example of this. They should complement but not overpower the land. It will be very hard for her to see pavement out at the ranch.

3. How and where was the land used?

- a. Sheep and goats were the primary ranching activity over the last two generations; Mrs. Watson's grandfather was the last to run cattle on the ranch.
- b. Mrs. Watson's great grandfather was the first to open the ranch up for public fishing. He charged 50 cents / person for access.
- c. The coastal Bermuda fields supplied the hay and feed for the ranch.
- d. The area closest to the existing homestead was used as a garden.
- e. The Reimers never allowed public horseback riding because equestrians were harder to keep track of than all of the other users.
- f. The rock climbing originally started without any of the Reimers knowing about it. The biking trails were cut in with the permission of the Reimers two to three years ago.

4. Misc. or General Observations

- a. The Reimers were originally from Germany.
- b. Mrs. Watson also distributed an Austin American Statesman newspaper article about the family that was originally published in August 31, 1941.

End of Minutes



5.0 Appendix

Meeting Minutes	User Group Interest:
Southwest Metro Park	Mountain Biking

Travis County Project No.: 06AE0187LP
Land Design Partners Project No.: P4027-01

Meeting Date: September 19, 2006– 1:00 PM

Attendees: **Mark Henneke**
Dan Sharp, Land Design Partners
Brent Luck, Land Design Partners (author)

The conclusions and action items from the above referenced meeting have been categorized into four main categories for easy reference: 1. Desired Program Amenities, 2. User Concerns, 3. How and where do they currently use the land? and 4. Miscellaneous or General Observations.

1. Desired Program Amenities

- a. The dirt road that the Reimers used as their entrance could be used for emergency access.
- b. "Bail out zones" are needed along the trails for emergency situations or for people who are tired.
- c. Mr. Henneke would not be averse to moving the road because vehicle-created dust permeates the bike trails along the road.
- d. Kiosks for bike trail maps.
- e. Trail signs are also desired with GPS markings. These could be the 4" wide vertical carsonite strips.
- f. An outdoors shower (like those you see along the beach areas of the coast or the trail head at Town Lake) is desired.
- g. Restrooms that blend in with the natural setting of the park are needed.
- h. Benches under trees located along the trail are desired.
- i. Can a group camping area be provided in the middle of the biking trails?
- j. Native wild flowers along the trails would be nice.
- k. Posted information on the history of Reimers would be great.

2. User Concerns

- a. The possible integration of equestrian and bikers is a concern. There is potential for user conflict and damage to the trails. Pedernales Falls State Park has separate trails for the two user groups.
- b. Keep the mountain biking trails for mountain biking only.

3. How and where do they currently use the land?

- a. All of the bike trails on the property are located east of the road to the river and the eastern property line.
- b. The trails are low impact (less than one foot wide).

4. Misc. or General Observations

- a. Mr. Henneke recommended the International Mountain Bicycling Association's book: Building Better Trails as a great resource reference.
- b. The existing biking area parking holds about 20-30 vehicles.
- c. The County (Kurt Neilson) has already discussed with the bike riders about using the other side of the hill for more bike trails.
- d. Adventure Racing" might be staged at Reimers; these are combination events of kayaking, swimming, biking, etc.
- e. The following signage designations are used:
 - i. Green = Beginners
 - ii, Blue = Intermediate
 - iii Black = Expert.

End of Minutes

5.0 Appendix

Meeting Minutes	User Group Interest:
Southwest Metro Park	The Pedernales River

Travis County Project No.: 06AE0187LP
Land Design Partners Project No.: P4027-01

Meeting Date: September 19, 2006– 4:00 PM

Attendees: **David Houston**
Wendy Scaperotta, Travis County
Dan Sharp, Land Design Partners
Brent Luck, Land Design Partners (author)

The conclusions and action items from the above referenced meeting have been categorized into four main categories for easy reference: 1. Desired Program Amenities, 2. User Concerns, 3. How and where do they currently use the land? and 4. Miscellaneous or General Observations.

1. Desired Program Amenities

- a. Mr. Houston would like to see a combination of park use and preservation.
- b. Mr. Houston would be very much in favor of moving the river road to the upland area.
- c. Provide an outlet point for kayaks.
- d. Allow equestrian use – they have been on the ranch forever, are less damaging than mountain bikes, and are a great resource for patrolling the park.
- e. Potential to be an educational park – if you want to play soccer, go to Zilker.
- f. A computer connection should be added at the administration offices so that the County might could connect to weather monitoring services for flood warnings along the Pedernales River.

2. User Concerns

- a. Four major groups of turkeys use these lands and Milton Reimers land for roosting. Rock climbing might be invading these roosting areas. The turkeys are a good barometer of overuse of the land, as they tend to migrate away from too much human impact on the land. Currently, the turkeys migrate through the park, the preserve lands, and the surrounding lands across the river. Most of the roosting occurs along the cliff areas. The County might need to investigate wht mating seasons of the turkey and closing off public access to these areas at certain times of the year.
- b. Hogs are starting to move into the ranch lands.
- c. A cedar eradication program needs to get going.
- d. Don't let the park get overused like Pace Bend Park (Paleface park). Equestrian is allowed at this park. Pace Bend Park is 1,368-acres and has a visitor rate of 350,000 annually.
- e. Mr. Houston encouraged the County not to think of just human use out at the ranch but to also think of the animals, plants, and environmental aspects that the park provides.
- f. Buffer needed between parking and canyon/river (cars leaking).

3. How and where do they currently use the land?

- a. The bend of the river is the major spawning area for white bass in the spring.
- b. When the river is up, 30 to 60 boats might be using this area in the spring. Many of these boats launch 9 ½ miles downstream at the Pedernales Camp off of Olf Ferry Road.

4. Misc. or General Observations

- a. Mr. Houston has been visiting Reimers Ranch for the last 41 years and his house is located along the Pedernales River approximately 200 yards down from the Highway 71 Bridge.
- b. Monarchs utilize the canyons during their migrations (late Sept./Oct.)
- c. Fall rains dictate the flow of the river in the spring.
- d. Two different environments exist – the environment along the river and the upland environment above the cliffs.
- e. Mr. Houston has seen the river rise from 20 cfs to 40,000 cfs in 3 ½ minutes; on Dec. 25, 1999 the river got up to 120,000 cfs. The average flow of the river is 300-400 cfs.
- f. Milton Reimer always had “everybody out by dark”.
- g. According to Mr. Houston, sheep eat grass. Goats will trim the persimmon and eat the cedar shoots.
- h. Look at Westcave preserve for insight into pre-use of site.

End of Minutes

Meeting Minutes	User Group Interest:
Southwest Metro Park	Birding and Bird Habitat

Travis County Project No.: 06AE0187LP
 Land Design Partners Project No.: P4027-01

Meeting Date: September 22, 2006– 1:00 PM

Attendees: **Dr. Byron Stone**
Rich Kasken (via conference call)
 Wendy Scaperotta, Travis County
 Brent Luck, Land Design Partners (author)

The conclusions and action items from the above referenced meeting have been categorized into four main categories for easy reference: 1. Desired Program Amenities, 2. User Concerns, 3. How and where do they currently use the land? and 4. Miscellaneous or General Observations.

1. Desired Program Amenities

- a. Black capped vireo habitat needs to be developed; this habitat includes head high, dense material, with a makeup of Texas persimmon, shin oak, and other natural thicket material.
- b. Introduce native grasses.
- c. Keep areas in grassland scrub.
- d. A bird observation blind is desired. Water is a must by the blinds to attract birds although only a trickle of water is needed. A water supply on a drip system would be ample. Examples of good bird observation blinds may be found at South Llano River State Park and Pedernales Falls State Park. The blinds at the latter are oriented perfectly. Food locations at the blinds (ex. halved oranges nailed to a tree) are good.
- e. It might be good to have the observation blind next to the pedestrian trail. This allows the general public to become interested in birding.
- f. If the Pogue Hollow Canyon area is open for birders, it might be nice to have a stile placed across the fence to allow access.
- g. Interpretive program is not needed; unless the County wanted to add some signage off of the more publicly used trails. The more seasoned birders know what they are looking for.

2. User Concerns

- a. KR Bluestem is not good for birding habitat. Please do not use it for re-vegetation within the park.
- b. Keep the cedar trees out of the park.
- c. Pedestrian traffic through birding areas is problematic, as is the presence of dogs. Bicycle trails are less problematic because people go through the birding habitat area much quicker.
- d. Birders like early morning access so a dawn to dusk park policy would be desired. Birders cannot access the Hamilton Pool Nature Preserve for birding because that facility does not open until 9:00AM.

3. How and where do they currently use the land?

- a. The road to the river to the top of the cliffs along western park edge is a primary birding area. This area is also has existing native grasses that should be preserved.
- b. The area south of Reimers Canyon would be a desirable birding area if the main entry road was moved and if some of the upland slope area was opened up for birding.
- c. The coastal Bermuda field is almost worthless for providing bird habitat.
- d. There will still be avid use of the park by birders where roads and other support facilities are not located.

4. Misc. or General Observations

- a. Reimers Ranch Park offers a great big piece of birding habitat that is not overgrown with cedars. There are a number of good birding opportunities.
- b. Birders are mainly interested in :
 - i. Specialty birds
 - ii. Lots of birds
 - iii. Birds that are unusual in the area.
- c. Dr. Stone stated that the facility will not be a world class birding center.
- d. Two general types of bird habitat were identified:
 - i. Climax habitat – here vegetation has grown to its maximum height; nothing on the land has been cut, burned, or grazed in 40 plus years.
 - ii. Successional habitat – lands that are reestablishing vegetation; could be in a succession of stages.
- b. Joe Grabowsky was identified as the major ornithologist in the Central Texas area.
- c. Attached are two emails sent from Dr. Stone to the Land Design Partners Design Team regarding bird species and habitat at Reimer’s Ranch.

End of Minutes



Meeting Minutes	User Group Interest:
Southwest Metro Park	Rock Climbing

Travis County Project No.: 06AE0187LP
 Land Design Partners Project No.: P4027-01

Meeting Date: September 30, 2006– 10:00 PM

Attendees: **Gary Ellis**
John Hogge
Evan Jackson
Jordan DeLong
Luke Bowman
Tommy Blackwell
Jeff Olson
Emily Mathon
Minna Miller
 Dan Sharp, Land Design Partners
 Brent Luck, Land Design Partners (author)

The conclusions and action items from the above referenced meeting have been categorized into four main categories for easy reference: 1. Desired Program Amenities, 2. User Concerns, 3. How and where do they currently use the land? and 4. Miscellaneous or General Observations.

1. Desired Program Amenities

- a. Climbers ideally like 25 – 30 feet of breakout space at the bottom of a climbing surface to allow for the use of crash pads, climbing equipment, backpacks, etc.
- b. Climbers would like posted trail maps for hikers (not necessarily for climbers).
- c. Climbers would like the Pogue Hollow cliffs (PHC) to be open for climbing for the following reasons:
 - i. The roofs are different from those associated around Reimer’s Canyon.
 - ii. PHC offers more novice face climbs; R2C2 stated that the existing climbing areas at Reimers Ranch are noticeably lacking beginner climbs. As an example, Dead Cat’s climb (which is a beginners climb) is always crowded.
 - iii. There is more shade at PHC, which will be especially beneficial in the summer.
- d. The climbers would like to have a restroom similar to the one at the Barton Creek Greenbelt.
- e. Emergency Access for both EMS Vehicles and gator style 4 wheelers (especially for the PHC if those areas are opened for climbing). Hamilton Pool noted as an example – they have a paved, gated road that is only used for emergencies.

2. User Concerns

- a. The development of pedestrian only trails along the top of the cliffs was a concern of R2C2, specifically with the potential for people to throw or kick rocks off of the edge onto the climbers below.
- b. Signage should be added at the top of the cliff to warn of climbers below.
- c. There is some pedestrian conflict at Spider Grind as hikers enter Reimer’s Canyon.
- d. Trampling of the fauna on the south side of Reimer’s Canyon occurs because trails are not clearly marked and because climbers and their gear block some of the regular routes.
- e. The climbers stated they have no conflicts with fishermen along the river.
- f. R2C2 stated two major concerns:
 - i. Maintaining access to the existing climbs they have.
 - ii. Getting access to the PHC.

3. How and where do they currently use the land?

- a. Climbers generally access the north and south climbing faces three ways:
 - i. By entering Reimers Canyon
 - ii. Accessing the face of the cliffs off of the existing road to the river (where the log crosses the road to prevent vehicular access
 - iii. Access through Ravine A.
- b. Climbers are currently not using the Pogue Hollow cliffs; R2C2 discourages “bandit climbing.”
- c. Climbers utilize the cliffs as far south as the south property lines; the northern limits tend to be the face of the cliffs off of the existing road to the river (where the log crosses the road to prevent vehicular access). There is some bouldering that occurs to the north of this road.

4. Misc. or General Observations

- a. The Barton Creek Greenbelt and Enchanted Rock were mentioned as the only other quality rock climbing areas around Austin.
- b. Three forms of rock climbing are generally used at the site:
 - i. Top Rope (climbers have a rope through the top bolt of the climb only).
 - ii. Leading (used for higher cliff climbs and more difficult climbs; climbers clip into bolts as they ascend).
 - iii. Bouldering.
- c. R2C2 recommended the book Austin Rock by Sean Grady as a great resource for documenting the routes of the climbs at Reimer’s Ranch.
- d. The climbers indicated they are ok with moving the parking from its current location at the beginning of Reimers Canyon.
- e. Currently, there is not a formal process for replacing bolts; the officers of R2C2 primarily do the bolt checks and replacements.
- f. Applications must be sent to the seven officers of R2C2 for review. A simple majority vote approves the route, which is then submitted to the County (Kurt Nielsen) for approval.
- g. Users typically spend 4-6 hours climbing at the site, especially considering that it is an hours drive from Austin.
- h. Most of the climbing use is on the weekend; during the week there is typically only 5% use of the climbing routes.

End of Minutes



5.2 Public Review Comments

The comments received via email, telephone, and public meetings are provided below. They are categorized as follows, starting with the issues that received the most commentary.

- Equestrian Use
- Mountain Biking
- Accessibility
- Parkland Reserve Lands
- Clothing Optional Use
- Astronomy
- Climbing
- Birding
- Park Facilities
- Sports Fields
- Project Schedule
- Interpretive Facilities
- Working Together
- Multiple Interests (a category for those who commented on more than one of these listed topics)

Equestrian Use

I am a resident of Travis County and just wanted to check to see if there are plans for Horse Trails on Reimers Ranch? I have been to Reimers and it is a beautiful place and would be a wonderful place to ride.
Kate Austin - 5/28/07

I understand the plans to develop Milton Reimers Ranch Park have been developed and are open for public comment at this time. Please pass along to the Commissioner [Daugherty] my concerns that the plans do not include horseback riding trails. Under private ownership, this ranch land was ideal for horseback, and in my view this tradition should continue. Any assistance on this important issue will be greatly appreciated by a good number of folks. Patrick C. King - 5/29/07

Will equestrians be allowed to use the park? Michael Sunderman - 6/5/07

Equestrian users have not been considered in this master plan. Five different horse groups are represented at this meeting tonight, and overlooking equestrians is shameful. I'm very disappointed in the County. Bandera and Hanes Prairie show that the impact of equestrian use on the land is not a problem. Dangers with horses are not greater than danger associated with mountain biking and climbing. Multi-use trails are being built at Slaughter Creek. Horses are part of this state identity. What County facilities include horses? Equestrians should have been more involved in the master planning process. What about other acreage? The master plan should include the other parcels. Kelly Boesen - 6/6/07

Equestrians need a place in Travis County to ride and gather as a group. There is no place for overnight trips in the County. TETRA members have helped make, maintain trails and fencing. Equestrians and mountain bikers can also share trails. They do it in Killeen. Equestrians can ride horses anywhere that a bike can go. Equestrians have been neglected in this process. We don't need high, wide trails. A trail at Reimers would be used by equestrians. Novella Huffington - 6/6/07

I belong to the Lost Pines Riding Club. When you have nothing, 500 acres is a lot. We'll take a 4-mile trail. We'll ride places where people can't walk. You could open up some of the trails to equestrians. Horse people will work and help with trails. Mary Beth Kelly - 6/6/07

I belong to Horses Rock and Travis County 4H. We have to ride in Hays County so Reimers would provide allow us get kids riding with horses in Travis County. Holly Carson - 6/6/07

The park offers an opportunity for kids to ride horses. I'm frustrated with the us versus them mentality. I

love all sports and we should be able to work together. Donna Moore - 6/6/07

I'm disappointed with the County for not considering equestrians. We have wanted to access Reimers a long time. I spoke with Milton about improving the road so we could drive horse trailers up there. Travis County hasn't been a friend to equestrians. Please be fair and include equestrians in the planning of this park. Mary Beth Meier - 6/6/07

I endorse equestrian use in the park. Trail Masters are willing to volunteer. Bandera State Park has multi-use trails and there are never any problems. Suzy Ticon - 6/6/07

There will be a positive economic impact from having horses, from buying feed, gas, and food. The Texas horse industry has a \$3 billion impact on the economy. 450,000 Texans are involved in the industry, and there are 32,000 full time jobs. I propose that a formal horse panel be formed to develop a master plan for equestrian trails at the park. I'm not necessarily for multi-use trails. Horses don't cause erosion. Wind, rain, and gravity do. Horses do loosen soil but so do bikes. I completed trails master course, and know that most trails are not designed properly. We need to build trails that are sustainable and maintenance free. If trails have been cut the wrong way, they will erode. I propose having a separate trail system at Reimers. Brenda Dewitt - 6/6/07

I submitted a petition with 220 names to Travis County about equestrian use at Reimers a year ago. Slaughter Creek has a perimeter horse and bike trail. Reimers did have horses. Keep lighting low if you have it out there. Horseback riding for handicap can help. I'd like specific group camping areas that could be used by permit, which has already been discussed. Horse people leave camp areas clean. It's great to have a place to do everything. Julie Johnson - 6/6/07

We're lacking public land for riding. McKinney Roughs, Pedernales State Park, and Onion Creek are only places in the area. It looks like equestrian use could be accommodated in the plan. Liz Dundae - 6/7/07

1500 acres is so big. A 4-5 mile trail would still provide leisurely afternoon, picnic. Separate uses are ideal but hikers and horses work out well. Could outer loop become a pedestrian/equestrian trail? There would be no conflict with bikes. Janice Hilscher - 6/7/07

Equestrian Use - From my understanding horseback riders want to use the currently existing mountain bike trails. I totally disagree with this as I think it is a hazard to both mountain bikers and equestrians as well as the horses. Horse trails should be completely separate from the mountain biking trails to avoid accidents, law suits, other user conflicts and trail erosion. Maintenance on the biking trails is a lot of work and if horses start to use it, it will be just that much more work for those doing the trail maintenance. Lots of long hours and hard work went into the building of these mountain biking trails and these trails were specifically designed for mountain biking. As a mountain biker the last thing I'd like to do is bike through horse poop (excuse my language...) or run into the back end of a horse. This is not good for anyone involved. Totally separate trails need to be developed for horses with horses in mind and safety. I would think the different groups could work together to get this done; the equestrian group as well as the mountain biking group. We could have horse trail work days to get it done and I'd be happy to help as I know of others that would too. Barbara Martinez - 6/11/07

I'm a member of the American Endurance Riders Conference. I've completed a Trail Master course for designing sustainable horse trails. Equestrians don't want to ride on mountain bike trails. The biking community needs to be complemented for their leadership and work on building sustainable trails.



5.0 Appendix

Equestrians have catching up to do. Pedernales has separate trails for equestrians and bikers and hikers. Design is key to a sustainable trail. If designed properly they do not erode. The equestrian community asks for a chance to form a leadership council, to make a proposal and a chance to submit it to the County. There are trail masters in the area that can help with trails. Manure is a convenient excuse for not sharing trails. I've encountered bikers and hikers on equestrian trails at Pedernales State Park. They don't seem to mind. We're asking for part of the park, and don't want to take or use the mountain biking trail. Stargazing could be part of the trail. There are bird blinds at Pedernales State Park within feet of the equestrian trailhead and they coexist. A dialogue with hikers and bikers would be great. Brenda DeWitt - 6/11/07

Manure is a real problem. Can't ride around it because that widens the trail because that impacts the environment so you have to ride through which is a mess. John Southrey - 6/11/07

I'm an equestrian. Is there a possibility for horse trails? Are we wasting our time? When will we find out? How long does an equestrian trail need to be to make it worth while? The loop trail would be adequate but we'd like more. How wide and high does it need to be? Mike Budder with IMBA and Talon Trails has done consulting work at Pedernales State Park. Karen Banker - 6/13/07

I am President and Director of the Friends of the Pedernales Falls State Park ("Pedernales Park") and a horseback rider. Pedernales Park is located west of Dripping Springs toward Johnson City. It is a 45-minute drive for me to haul my horses from my home in Driftwood but it is the closest park with equestrian trails so I am to make the trip. There are three smaller parks, one at Canyon Lake, one at Pace Bend and the other is McKinney Roughs by Bastrop, which have equestrian trails. Pedernales Park is the only one west of Austin that would call "local" to the Dripping Springs area. Pedernales Park's Friends group has consisted primarily of horseback riders for the last 10-12 years. We have made many improvements to Pedernales Park, mostly non-equestrian projects, and we are currently about to undertake a major equestrian trail improvement/rerouting project since the horse trails, which were added in the early 90s, were not established in accordance with trail guidelines that we now know can prevent erosion and other problems. Believe me, equestrians do not want their horses traveling over poor trails, and today, in 2007, we have the knowledge and science to understand how to put in trails that will be non-eroding, low maintenance and will follow the natural lines of the topography. In short, the trails can be lovely, if established properly at the beginning. The Superintendent of Pedernales Park, Bill McDaniel, has worked all these years with the Friends group. He indicated he would be happy to speak to any of you about the equestrian trails at Pedernales Park, the benefits of having separate trails, common misconceptions such as horses brings in foreign plant seeds which fosters takeover by non-native plants (which has now been proven false), and other relevant topics. His telephone number at Pedernales Park is 830-868-7304 and his email is William.mcdaniel@tpwd.state.tx.us. I think you will hear from him that trail-riding equestrians are dedicated to the enjoyment of outdoor recreation, preservation of nature and they are also happy to coexist with and support other Park users. The Commissioners Court resolution which approved the purchase of the Milton Reimer Ranch land probably contained language that referenced a public purpose or public use/benefit; therefore your goal should be to encourage public use. Equestrians are part of the public for which the Reimer Park land was purchased and the failure to include them officials substantial justification is likely against Travis County's policies. Not only do I believe there is no justification to exclude equestrians from Reimer Ranch Park, I also believe that this is a great opportunity for Travis County to embrace the equestrian group of users who, if given the opportunity, could set a fabulous example of how trails can be built properly, thoughtfully and with care for the beauty of the natural surroundings. These trails could be a feather in Travis County's cap as a showcase for future trail development, which would not only protect the Reimer Ranch Park land but also land throughout Texas that may be used for trail development in the future. Please don't set a precedent for exclusion – give equestrians users the opportunity to enjoy Milton Reimer Ranch Park by giving us the opportunity to present an equestrian use proposal. Polly Powell - 6/13/07

Perimeter would be true multi-use trail if equestrians could use. Three-quarters of the park is occupied by existing uses. Where is there room for a horse trail? Can the 1800-acres of reserve land be used? What is the future for this land? Could equestrians use land proposed for mountain bike trail expansion? Could there be shared use in this area? Brenda DeWitt - 6/13/07

What can equestrians do to provide constructive input? Would a proposal be useful? Do I understand that mountain bikers don't object to equestrian using the loop trail? Charles DeWitt - 6/13/07

I live 15 minutes from Reimer Ranch Park. I am a wife, mother of 3 boys and an active community volunteer. I trail ride locally for recreation and competition. I am a member of the American Trails Association, the American Endurance Riders Conference, the American Horse Council certified Trail Master graduate and secretary of the Friends of Pedernales Falls State Park Board of Directors. I am thrilled to join Travis County and other user groups to develop a park that will have positive impact on the community. The Park will offer health benefits and financial development. This property offers a truly unique Park experience. I hope equestrian trails will be added to the Master Plan. It would be appropriate to include equestrians in the multi-use "perimeter" trail and one "cross" trail totaling about 4 miles. It would also be a great idea to expand the "bike only" trails, if the expansion was true multi-use, including equestrians. The current "bike only" trails total 13 miles. Please consider a prime example of a successful and yet simple equestrian trail head area located at Pedernales Falls State Park. This relatively small and simple but fully functional area has a natural grass surface, a water trough and one covered picnic table. This area could be used by stargazers after dark. The proposed Master Plan's area called the "commons" could be this multi user site. The trail rider community is accustomed to "primitive" areas and is familiar to "pack it in and pack it out" house keeping. It would be expected for the trails and trail head areas to be closed during wet weather and until the areas are dry. I would like to suggest the development of reserve lands as a perfect arrangement for additional equestrian trails. This would not in any way violate the preservation of open space or the preservation of water quality in the county park. The large acreage will allow the county to set a remarkable precedent in our state. Certainly some equestrians would like more miles of trails than are available in Reimer Ranch Park and more competitive trails similar to the competitive "bike only" trails. McKinney Rough's equestrian trailhead is successful and is "self-service" with maps available and envelopes for fees to be paid by users. The horse industry offers a positive economic impact. The Texas horse industry produces goods and services valued at \$3.0 billion. There are 455,600 Texans involved in the industry as owners, service providers, employees and even more as spectators. The Texas horse industry directly or indirectly provides 96,300 jobs. There are over 979,000 horses in Texas. Take into consideration the diverse culture of the equestrian community. Based on national figures, 34% of horse owners have a household income of less than \$50,000 and 28% have income over \$100,000. 46% of horse owners have an income of between \$25,000 to \$75,000. And over 70% of horse owners live in communities of 50,000 or less. The equestrian is also a very unique culture of folks that may live with their horses or "board". Horse keeping is very labor intensive and time consuming. Trail riders in general will consist of many different breeds of horses and many disciplines of riders. There are recreational and competitive riders. Riders range in age: young to old. Trail riders are also bikers, hikers, nature lovers and fitness conscious. What this user group lacks in organization and leadership they more than enough make up for with integrity and service. I highly suggest a multi-user group committee to support sustainable volunteer interest. Nothing unites a group like a cause! I realize equestrians were not original stakeholders at Reimer Ranch Park, however, I am confident that equestrians can and will be good neighbors to all users at Reimer Ranch Park. Thank you for your consideration of this input. Brenda DeWitt - 6/28/07

I am not a current horse owner, but come from a large family of equestrians and I fully plan to have a horse for my 10 year old daughter within the next year. One of the many reasons for my move to Austin was to

5.0 Appendix

enjoy the outdoors. I live on the SW side of Austin, in Travis Co because of the proximity to all of the natural areas that surround the SW side. I'm amazed that a county park plan, that considers it's "green" standard to be the highest in the country, would consider excluding one of the most natural modes of transportation, now a recreation from being considered a must in it's plan. Equestrians are among the most generous and ecologically considerate groups of people. The primary reasons most people ride, is to enjoy what nature has to offer. Most equestrians don't even live in urban areas, but in areas where they "live off and with the land". Equestrians tend to be animal oriented. They are disciplined and recognize the importance of being responsible with their animals and their surroundings. I can't think of a better group of people to include in your plan. Finally, when thinking of a nature park, one would think you would carefully consider all of those who would benefit. You have carefully explored hikers and bikers. Please reconsider your inclusion of horse lovers as well. Theresa Hooper - 6/29/07

I concur with Brenda DeWitt's email [above]. Please open Reimers Ranch park to the equestrian public and please do not sell the Reserve lands, but let the public, including equestrians, enjoy that land as well. Polly Powell - 6/29/07

A Simple Statement. I ride. That seems like such a simple statement. However, as many who ride know, it is really a complicated matter. It has to do with power and empowerment. Being able to do things you might have once considered out of reach or ability. I have considered this as I shovel manure, fill water barrels in the cold rain, wait for the vet/farrier/electrician/hay delivery, change a tire on a horse trailer by the side of the freeway, or cool a gelding out before getting down to the business of drinking a cold drink after a long ride. The time, the money, the effort it takes to ride calls for dedication. It's not a sport. It's not a hobby. It's what we do and, in some ways, who we are as human beings. I ride. I hook up my trailer and load my horse. I haul to some trailhead somewhere, unload, saddle, and I ride. I breathe in the air, watch the sunlight filter through the trees and savor the movement of my horse. My shoulders relax. A smile rides my sunscreen smeared face. I my helmet down and let the real world fade into the tracks my horse leaves in the dust. Time slows. Flying insects buzz loudly, looking like fairies. My horse flicks his ears and moves down the trail. I can smell his sweat and it is perfume to my senses. Time slows. The rhythm of the walk and the movement of the leaves become my focus. My saddle creaks and the leather rein in my hand softens with the warmth. I consider the simple statement; I ride. I think of all I do because I ride. Climb granite s labs, wade into a freezing lake, race a friend through the Manzanita all the while laughing and feeling my heart in my chest. Other days just the act of mounting and dismounting can be a real accomplishment. Still I ride. No matter how tired or how much my seat bones or any of the numerous injuries hurt. I ride. And I feel better for doing so. The beauty I've seen because I ride amazes me. I've ridden out to find lakes that remain for the most part, unseen. Caves, dark and cold beside rivers full and rolling are the scenes I see in my dreams. The Granite Stairway at Echo Summit, bald eagles on the wing and bobcats on the prowl add to the empowerment and joy in my heart. I think of the people, I've met. I consider how competent they all are. Not a weenie amongst the bunch. We haul 40ft rigs. We back into tight spaces without clipping a tree. We set up camp. Tend the horses. We cook and keep safe. We understand and love our companions, the horse. We respect each other and those we encounter on the trail. We know that if you are out there riding, you also shovel, fill, wait, and doctor. Your hands are a little rough. You do without to afford and probably, when you were a small child, you bounced a model horse while you dreamed of riding a real one. Now you are there. I ride. --Author Unknown Brenda DeWitt - 6/29/07

Please consider a prime example of a successful and yet simple equestrian trail head area located at Pedernales Falls State Park. This relatively small and simple but fully functional area has a natural grass surface, a water trough and one covered picnic table. This area could be used by stargazers after dark. The proposed Master Plan's area called the "commons" could be this multi-user site. The trail rider community is accustomed to "primitive" areas and is familiar to "pack it in and pack it out" house keeping. It would be expected for the trails and trail head areas to be closed during wet weather and until the areas are dry. I would like to suggest the development of reserve lands as a perfect arrangement for additional equestrian

trails. This would not in any way violate the preservation of open space or the preservation of water quality in the county park. The large acreage will allow the county to set a remarkable precedent in our state. Certainly some equestrians would like more miles of trails than are available in Reimer Ranch Park and more competitive trails similar to the competitive "bike only" trails. McKinney Rough's equestrian trailhead is successful and is "self-service" with maps available and envelopes for fees to be paid by users. Take into consideration the diverse culture of the equestrian community. Based on national figures, 34% of horse owners have a household income of less than \$50,000 and 28% have income over \$100,000. 46% of horse owners have an income of between \$25,000 to \$75,000. And over 70% of horse owners live in communities of 50,000 or less. The equestrian is also a very unique culture of folks that may live with their horses or "board". Horse keeping is very labor intensive and time consuming. Trail riders in general will consist of many different breeds of horses and many disciplines of riders. There are recreational and competitive riders. Riders range in age: young to old. Trail riders are also bikers, hikers, nature lovers and fitness conscious. What this user group lacks in organization and leadership they more than enough make up for with integrity and service. I highly suggest a multi-user group committee to support sustainable volunteer interest. Nothing unites a group like a cause! I realize equestrians were not original stakeholders at Reimer Ranch Park, however, I am confident that equestrians can and will be good neighbors to all users at Reimer Ranch Park. Thank you for your consideration of this input. Sonii Nagel - 6/29/07

I would like to express my desire for there to be trails for equestrian use at Reimer's Ranch Park. Trails of 12 to 15 miles would be a very good thing for many of us. Thank you for your consideration. Johnny Weddle - 6/29/07

Mountain Biking

I hope some effort will be expended to create a biking trail useful for an intermediate biker. The beginner trail is too easy and boring for Intermediate riders and the Advanced/Intermediate is really for the Advanced. Parts of the Advanced and Intermediate are the same. I had to get off my bike to get around some advanced obstacles as there was no possibility of following the trails as the width of the trail was narrower than the distance between the pedals on my bike. I know I will not be returning to the park unless that problem is remedied. Of course for the advanced it's not a problem. So if there is an interest in getting additional fee paying riders out there, suggest someone less advanced in riding skills is included in resolving this problem. Thanks. Lisa Adkins - 5/31/07

A drive-through entryway is probably not such a great idea at a park that will attract a lot of mountain bikers. Many mountain bikers transport their bikes on roof racks, and the combined height of bike + vehicle can easily require 10-12 feet of clearance. The Belton Lake Outdoor Recreation Area (BLORA), a popular mountain bike park, has such a covered entryway, and I have often seen people ruin roof racks and/or bikes by trying to drive through it. Darrell Commander - 6/2/07

Mountain bikers are concerned about the number of parking lots. It seems like there are too many. Not Recorded - 6/5/07

Provide plenty of signage to designate the mountain bike trails for biking only. Not Recorded - 6/5/07

Trails should be sustainable, following the topography. Existing mountain biking trails may not be conducive to horseback riding, too tough to maneuver on them. A mix-used trail is being built at Slaughter Creek and it is wider and has a higher canopy than the mountain biking trail at Reimers. Identify appropriate areas for equestrians and minimize crossings with mountain biking trails for safer trails. Consider consolidating parking and eliminating some of the perimeter parking. Realign the proposed



5.0 Appendix

multi-use trail away from the road. Architecture needs to maximize natural ventilation in buildings. Maybe provide outdoor showers at the mountain biking restroom. Move the pedestrian bridge at the canyon up the canyon so it's shorter and doesn't cost so much; money could possibly be used for shade structures. Special events should be allowed; permitting could maybe generate revenue. No barrel racing. Leave an open area for occasional camping for special events. Britt Jones - 6/6/07

I'm pleased overall. The multi-use perimeter trail is great. I'm concerned that hikers would want to be on bike trails but that is not appropriate. Regarding how dollars are being spent, paving less would save money. There may be too many parking areas along the river. The pedestrian bridge across the canyon would also be expensive and destructive to the canyon. It seems pointless. The new pedestrian trails in this area also cross too many mountain biking trails. The trail should be taken around the canyon instead of across the canyon. Shade, benches, and vistas along the mountain biking trail would be nice. Other "places of pause" for the pedestrian trail should be found to avoid conflicts with mountain bikers. There should be no AC in the restrooms. Where there's water provide showers. Move mountain biking parking a little NE of existing area. Move multi-use trail away from the road. Provide an area for a pump track. Cedar abatement - yes! Dogs need to be on a leash. Where there are restrooms, have water for pets. If equestrian use, have water troughs. Water troughs are also a great place for mountain bikers and hikers to cool off. So is the river. Provide a hose, place to rinse off. Provide a place to park trailers. What is the construction time frame? Provide a camping area parking for special events. What are plans for Johnny's homestead? What are plans for Reimers' homestead? Debbie Mann - 6/7/07

Reimer's Master Plan Input from the Austin Ridge Riders Mountain Bike Club:

Note: () = location on map to be submitted by Mark Henneke. Roads and Parking

-We believe the Proposed Master plan should reduce the amount of paved roads and parking locations. (1) We are recommending a relocation of the proposed Mtn Bike Trail Head Parking to an area just North East of the existing mtn bike parking area. A seating area under the trees near the parking lot is also needed. The Proposed location isolates Mtn bikers from other park uses. This will reduce the amount of road pavement by aligning it closer to the Climbing Trailhead and the Reimers Canyon Activity center and pavilion. (2) We also recommend consolidating all of the River View parking into one location at River Bend parking.. We feel parking here (River View 1 & 2) will detract from the trail experience. It is too close to some of the more scenic trail, will be noisy and would most likely be an extra source of litter. The proposed roadway could then be utilized as part of the Hike & Bike multi-use trail. Multi uses of existing Mountain Bike Trails -We believe that the existing mountain bike trails should remain single-use trails except the double black diamond which will be shared with hikers. - The existing mountain bike trails were built by the mountain bike community designed specifically for mountain bike use in this location. Approximately 1600 hours of volunteer labor by the mountain biking community went into designing and building the trails at Reimers. The mountain bike community has a solid track record of participation in trail building. Our most recent trail effort is a multi-use trail in Austin and 75% or more of the volunteer effort has been done by mountain bikers. -The existing Reimers mountain bike trails are simply not suitable for multiple uses. The trails don't go "anywhere" -they do not offer a direct route to any destination. They zigzag and switch back, they seek out instead of avoid obstacles such as ledges and rock gardens. They are designed to challenge bike handling skills such as tight cornering, ledge climbing and dropping. They are currently only one direction. They are only 12-18" wide. They are built to sheet off water and susceptible to channeling and erosion if used when wet. Hikers and equestrians would soon become frustrated with this back and forth and up and down over and over without getting "anywhere" and eventually create their own cut throughs, damaging the existing trails. If cut throughs are made the direction of flow becomes indiscriminate and accommodate. Users would be going in all directions and present user conflicts. -We want enjoyment for everyone, and believe that new separate trails that accommodate other users would vastly reduce user conflict incidents and better serve the total park population. -We are willing to partner with the other

stakeholder groups to help design and construct a multi use trail utilizing existing ranch roads and the proposed perimeter hike and bike trail. -We recommend creating a Memorandum of Agreement between Travis County and the Stakeholders, where the Stakeholders are involved in planning and the roles and responsibilities are defined by each group regarding construction, use, maintenance of user specific "amenities" (ie, trails, birding blinds, climbing routes etc) (3) Pedestrian bridge -We feel that the proposed pedestrian bridge at Palmetto Crossing could be eliminated by re-routing the northern spur of the proposed trail a few hundred feet upstream. The cost savings could be used for more shade structures, benches, picnic tables and showers. We also recommend eliminating the southern spur of this hike & bike trail because it crosses the existing mountain bike trail numerous times. Special events - We would like the park to permit events such as Adventure Races, Duathalons, Runner Races, Mtn Bike Time Trials, MTB Festivals and MTB Races. Events such as these can be income generating to the park as well as a boost to the local economy. (4) For events and special permit camping, we recommend keeping an open field free of structures with electrical hook-ups and water. We would like to consider a portion of the area currently fenced (40 acres). -Amenities -In addition to the outdoor shower proposed for the Mtn bike trailhead we feel this amenity would be useful and desirable at the other proposed Restrooms with plumbing. (similar to the one at Muleshoe Bend LCRA park) -Restrooms do not need to be air conditioned, just maximized ventilation. This is another opportunity for cost reductions. Shade - set up seating under shade trees within reasonable distance from parking lot and supplement with multiple shade structures. Add benches under shade periodically along the trails and at scenic view points. The more shade, the better. Specific trail modifications noted on map submitted by Mark Henneke: (5) -Remove hike & bike trail bisecting the field. (6) -Re-align some of the existing mtn bike trails (away from road) (7) -Designate an area for a pump track near the Mountain bike parking and trail head. (8) -We support the expanded Mountain Bike area as identified on the map and have submitted a proposed route. We want to participate in planning, design and construction of this and other re-routes or additions. Theodore Jump - 6/7/07

I am writing this email to comment on the Milton Reimers Ranch Park Proposed Master Plan. I wish I could come to one of the meetings but I am unable due to a surgery I had 3 days ago. I have been a frequent visitor to Reimers Ranch since it was opened for bicycles, long before it became a Travis County park. It has been a while since I have been due to physical issues that led to my surgery. I am looking forward to the day I can get back out there and enjoy it. I am very excited about the proposed new additions to the park and the possibility of additional trails. I am a mountain biker (17 years) but I do not race or belong to any of the local clubs. I have been volunteering my time building trails for the last 18 months. I have enjoyed the trail work very much and feel myself becoming more involved the more that I do it. My biggest concern regarding Reimers Ranch is the equestrian use on the existing mountain bike trails. These trails are narrow and technical. Equestrians say they can ride the same trails that bikes ride but this is not always true. Many technical areas would be avoided and new, easier routes would develop to miss those parts. They don't want to get off and walk their horses on sketchy sections they want to be able to ride. Bikers know that rerouting trails is not accepted. City Park threatened closing when trails were getting rerouted. Bikers get off and walk the harder sections or pick easier trails to ride, many will stop and block or repair rerouted sections of trails to retain the original trail route and features. There are also many low branches and canopies that are close to the bike riders, all of these would have to be cleared out for horses to clear. I have also had experience on dual usage trails in Bandera, TX. They can be very technical (steep and loose) but they are not tight and twisty like Reimers. On wide open trails going up hillsides you have many routes to choose from, as the steep original trails get eroded from damage the horses make new easier routes off to the sides. The routes just keep multiplying. The last time I visited Bandera the trail was so torn up from hoof prints, a result of horses using the trails in wet conditions, it was not worth riding. I doubt that would happen at Reimers since they restrict access when conditions are wet. I have no problems on bikes and horses on the same trails but I feel the trail needs to be designed that way from the start. For example, the Slaughter Creek Trail on the water quality protection lands were designed for both to use. (I have put in at



5.0 Appendix

least 8 trail work days on this trail) The trail features are not very technical, the width of the trail is 4' wide and 12' (?) high. The non technical trail allows horses to travel it without making their own new routes off to the sides that would be easier for them. The wider trail also offers more room for the bikes to clear the trail when meeting up with the horses. This trail is going to be a good test of this dual usage, most bikers and equestrians are not used to encountering each other on trails in the Austin area. There are no set rules to follow, horses are individuals and you can not expect them to react the same. I think that the new proposed perimeter trails and existing jeep roads would be better for equestrian use at Reimers. It would be much safer for all. I am sure that the majority of people that would volunteer to help build and maintain them would be the bike riders. From my experience the majority of trail builder and maintenance volunteers are bike riders. I have met a few equestrians at the Slaughter Creek Trail but they are far outnumbered by the bicyclists. I have yet to meet an equestrian at any other trail work location that I have worked on. The bike riders are always open to working on trails, even if they will not have access to ride on them. I was very happy when the bond election passed in 2006 for Reimers to become a county park, it would have been sad to lose it. I never expected all of these changes to be proposed for Reimers but I look forward to them making this wonderful place even better. Please protect and preserve the existing trails for their intended uses. Brad Langford - 6/7/07

Saw your post, but didn't really know what to say about involvement. I love Reimers ranch and think it is a great place to ride. A little exposed and hot during the summer, so more trees would be nice within the plan, but I digress. I think the flow is great, climbs and drops challenging, really good stuff. I agree that the equestrians would not enjoy the trails as we do or use them as we do. I do not know what equestrian trails look like or do to a property. You might want to mention that to people on mojo. What are the people looking for in a horse trail? It's not like a big dog park, but in general what are the trails like? People? Hard to comment when you don't have experience in something. I like how you folks are commenting with stats on hours, and suggestions. As a single parent it is difficult to make meetings and I wouldn't know what to say at one, except that the trail is sweet, technical, more trail would make the place more attractive as a destination; especially, since it takes so dang long to get there with all the traffic on 620. I appreciate the new road. I like the ideas of shaded picnic areas and a single parking lot, but plan for a bigger one than they think they need. Horse trailers are going to take up a lot of space. We co-mingle with the climbers and don't have issues. It's not like the need to build trail or maintain much. Nature takes care of that. I think it would be cool to see people on horses (off in the distance) as we're riding around the trails. I would like to see the trails go thru and/or connect to The Alamo (if that is the same property or not). I like the idea of more mileage, but wouldn't want to lose the mile downhill with the jumps. Those are fun and make the climb to get there worth it. I don't think we need to dominate the place, but we use what we build. If they build more, we will use it. I think if it were easier to get to, more people will use it. I know I dread a trip to Reimers, Muleshoe or RHR. As they all take about an hour. I don't think the place gets enough traffic to sustain a grill or whatever, but RHR is dying a slow death without the saloon. I like the idea of the swing. Nothing like a dip after a long ride. People need to quit being pansies about everything and let people have fun and be responsible for their selves (feel free to paraphrase as needed). Sorry I'm rambling. Thought I'd try to chime in and show some support. I really appreciate the work you guys do and your dedication, without it we wouldn't have a place to go. It is a definite must see when someone comes to town to ride. CP, Reimers, BCGB; classic Austin trails. Erik Okerholm - 6/10/07

I've been a regular user for many years. Mountain biking at the Hill Country State Natural area is a miserable experience. Horses are heavier steppers and go around the water bars, widening the trail. Provide separate-use trails. What are intended uses of fields? Provide enough of a buffer between the parking lot and canyon so pollution from the parking lot doesn't run into the canyon. there now problems at Hamilton Pool. Will there be water quality testing? Pedernales has volunteers who do it. There is community in Austin of well-meaning trail builders. Reimers is incredible. It was noble of Milton to sell this land for a park when he could of made more if he sold it for development. Milton liked historic users and wanted to preserve character. There are potential user conflicts with equestrians. To use trail with bikers is a challenge - and they

also did not build them. There are elements on mountain biking trails that require horseback riders to dismount, and horse waste and urine is a problem. Environmental degradation can be avoided by building sustainable trails. Mountain biking has less impact than horses or motorized use. It is similar to hiking. John Southrey - 6/11/07

I'm the vice president of the Austin Ridgeriders. The restrooms need to be large with lots of natural ventilation. Pace Bend's seem nice. I have river access concerns. The paved road to Riverview parking lots would detract from the character of the area. I recommend expanding the Riverbend parking lot and eliminating the others. I like the mountain biking parking lot where it is now but it can be moved up to where trail head starts (NE of existing parking area). This is closer to the canyon than the proposed parking lot, and mountain bikers go to the canyon and river often. It would also be better for events. Regarding equestrian use, the trails were built specifically for mountain biking. I'm not opposed to the loop trail being used by equestrians. Mark Henneke - 6/11/07

I helped form the Central Texas Trail Tamers and have done a lot of hiking and trail building. There is a science to building trails. Never liked multi-use trails. I've repaired trails due to high use. Mountain biking trail people are active in the maintenance of their trails. Patrick Clynch - 6/11/07

I am a hiker and mountain biker and absolutely love Reimers Ranch and have been going out there since it opened to the public. I do have some concerns and comments but could not make any of the meetings and wanted to send in my input. Parking - The parking lots should be kept to a minimum, the less parking lots the better. The existing ones should just be made larger or if moved should be moved to a grove of trees that is close by the trail head so the trail head can be moved to accommodate the parking lot. The grove of trees that I'm thinking of is not far from the current mountain biking trail head. No parking areas or cars should be visible to the hikers or bikers while in the middle of their hiking or biking. Once you leave the parking lot on your bike or hike you shouldn't ever see a car, this would totally distract from the nature and trail experience and why I like to go out there. Equestrian Use - From my understanding horseback riders want to use the currently existing mountain bike trails. I totally disagree with this as I think it is a hazard to both mountain bikers and equestrians as well as the horses. Horse trails should be completely separate from the mountain biking trails to avoid accidents, law suits, other user conflicts and trail erosion. Maintenance on the biking trails is a lot of work and if horses start to use it, it will be just that much more work for those doing the trail maintenance. Lots of long hours and hard work went into the building of these mountain biking trails and these trails were specifically designed for mountain biking. As a mountain biker the last thing I'd like to do is bike through horse poop (excuse my language...) or run into the back end of a horse. This is not good for anyone involved. Totally separate trails need to be developed for horses with horses in mind and safety. I would think the different groups could work together to get this done; the equestrian group as well as the mountain biking group. We could have horse trail work days to get it done and I'd be happy to help as I know of others that would too. Shade, Shade, Shade - I would like to see more shade structures and picnic tables. Would like to see this a reasonable distance away from the parking lot. Seems there is a lack of both, shade and picnic tables, and they are quickly sought after. Special Events - As I have only been able to camp out once at Reimers, this is a very special event that I would like to see continue. I would like to see this special permit camping continue as well as other special events such as races and time trials. Amenities - Maximized ventilation restrooms with an outdoor shower would be awesome! Thank you for considering my input. Reimers is truly a special place. Barbara Martinez - 6/11/07

My name is Cathy Southrey and I would like to express my thoughts regarding the proposed Reimers Ranch Park Master Plan. First of all, many thanks to the designers and to the Travis County Parks Dept for the thought and planning that has gone into this master plan. I think it is obvious that the intent is to preserve the "natural" feel of this wonderful piece of property and not over develop it. I very much appreciate the recognition given to the historical users of the park - climbers, fishermen and mountain bikers. I am an

5.0 Appendix

amateur mountain biker who has used the trails at Reimers Ranch for several years. I have heard through the mountain biking community that the Equestrian user group has requested equestrian access/trails to the park. Please understand that I have absolutely no opposition to equestrian use at all, provided they have their own trails and do not expect to ride on mountain biking trails. Reimers Ranch mountain biking trails are single track and have been designed specifically for mountain bike use - they wind back and forth and go up and down ledges. Equestrian use of these trails would drastically and quickly reduce the quality of the trails. Most likely, it would also require the tree canopy over these trails be cut away in order to accommodate a rider on a horse. Horses would also impede the flow of a mountain bike ride because according to IMBA rules of mountain biking, a biker must dismount when encountering a horse on a trail and wait for instructions from the rider as to what to do. Lastly, the issue of horse manure on the trails must be addressed. It is an impediment to bikers and hikers to have to attempt to avoid manure on a trail. At a public hearing last night, a representative of the equestrian user group assured us that they had absolutely no desire to use mountain biking trails. Since equestrians have not historically used the park or contributed to the trail construction on the property, it is my sincere hope that the Travis County Parks department will not compromise the mountain biking trails in order to accommodate equestrian riders. If the park can accommodate a separate equestrian trail, I have absolutely no objections. My thoughts after reviewing the plan is - is there enough acreage in the park to warrant and support a separate equestrian trail or should the construction of equestrian trails be placed on hold until future plans and decisions are made regarding use of the adjoining properties - Reimers Parkland Reserve and Hogge Parkland Reserve? Cathy Southrey - 6/12/07

As an avid mountain biker and local shop owner, Reimer's is one of my favorite places to ride. I love it just the way it is, but I was also encouraged to see the plans for the continued development of the park for among biking as well as other activities. Having reviewed the proposed master plan, I'm excited about the possibilities for the park. The one point of contention I have is the possibility that some of the mtb trails might be specified as dual or mixed-use trails. I have nothing against hikers or horses making use of the park, however putting them on the same trails as mountain bikers would be a mistake and would lead to a less satisfying experience for all groups involved. As you know, the existing mtb trails at Reimer's were built by mountain bikers for mountain bikers. They simply aren't intended for hiking or horseback riding. In fact, hiking and horseback riding on these trails could very well cause damage and changes that would severely impact the sustainability of said trails. There's also the issue of interactions between these groups on the trail. There are certainly areas of the trails where mountain bikers travel at a fairly good pace. Coming across an unsuspecting hiker or - even worse - a skiddish horse could pose a serious hazard to bikers, hikers, and horseback riders. Reimer's is such an amazing resource and I'm sure that with proper planning and public discussion it can be a place where there can be something for hikers, bikers, and horseback riders. I would strongly urge the decision makers to consider creating separate trails for these three groups instead of trying to make them coexist on the same trails. Unfortunately, I won't be able to attend Wednesday's meeting, but I wanted to make sure and express my support for the Austin Ridge Riders feedback to the proposed master plan. Erik Kieke - 6/12/07

We believe the proposed Master Plan should reduce the amount of paved roads and parking locations. (1) We are recommending a relocation of the proposed Mtn Bike Trail Head Parking to an area just North East of the existing mtn bike parking area. A seating area under the trees near the parking lot is also needed. The proposed location isolates mtn bikers from other park uses. This will reduce the amount of road pavement by aligning it closer to the Climbing Trailhead and the Reimers Canyon Activity center and pavilion. (2) We also recommend consolidating all of the River View parking into one location at River Bend parking. We feel parking here (River View 1 & 2) will detract from the trail experience. It is too close to some of the more scenic trail, will be noisy and would most likely be an extra source of litter. The proposed roadway could then be utilized as part of the Hike & Bike multi-use trail. Multi uses of existing Mountain Bike Trails -We believe that the existing mountain bike trails should remain single-use trails except the double black diamond which will

be shared with hikers. -Existing mountain bike trails were built by the mountain bike community designed specifically for mountain bike use in this location. Approximately 1600 hours of volunteer labor by the mountain biking community went into designing and building the trails at Reimers. The mountain bike community has a solid track record of participation in trail building. Our most recent trail effort is a multi-use trail in Austin and 75% or more of the volunteer effort has been done by mountain bikers. -The existing Reimers mountain bike trails are simply not suitable for multiple uses. The trails don't go "anywhere" - they do not offer a direct route to any destination. They zigzag and switch back, they seek out instead of avoid obstacles such as ledges and rock gardens. They are designed to challenge bike handling skills such as tight cornering, ledge climbing and dropping. They are currently only one direction. They are only 12-18" wide. They are built to shed off water and susceptible to channeling and erosion if used when wet. Hikers and equestrians would soon become frustrated with this back and forth and up and down over and over without getting "anywhere" and eventually create their own cut throughs, damaging the existing trails. If cut-throughs are made the direction of flow becomes indiscriminate and unmanageable. Users would be going in all directions and present user conflicts. -We want enjoyment for everyone, and believe that new separate trails that accommodate other users would vastly reduce user conflict incidents and better serve the total park population. -We are willing to partner with the other stakeholder groups to help design and construct a multi-use trail utilizing existing ranch roads and the proposed perimeter hike and bike trail. -We recommend creating a Memorandum of Agreement between Travis County and the Stakeholders, where the Stakeholders are involved in planning and the roles and responsibilities are defined by each group regarding construction, use, maintenance of user specific "amenities" (ie, trails, birding blinds, climbing routes, etc) (1) Pedestrian Bridge- We feel that the proposed pedestrian bridge at Palmetto Crossing could be eliminated by re-routing the northern spur of the proposed trail a few hundred feet upstream. The cost savings could be used for more shade structures, benches, picnic tables and showers. We also recommend eliminating the southern spur of this hike and bike trails because it crosses the existing mountain bike trail numerous times. Special Events- We would like the park to permit events such as Adventure Races, Duathalons, Runner Races, Mtn Bike Time Trials, MTB Festivals and MTB races. Events such as these can be income generating to the park as well as a boost to the local economy. (1) For events and special permit camping, we recommend keeping an open field free of structures with electrical hook-ups and water. We would like to consider a portion of the area currently fenced (40 acres). -Amenities- In addition to the outdoor shower proposed for the Mtn Bike trailhead we feel this amenity would be useful and desirable at the other proposed Restrooms with plumbing. (Similar to the one at Muleshoe Bend LCRA park) -Restrooms do not need to be air conditioned, just maximized ventilation. This is another opportunity for cost reductions. Shade - set up seating under shade trees within reasonable distance from parking lot and supplement with multiple shade structures. Add benches under shade periodically along the trails (even biking) and at scenic view points. The more shade, the better. Specific trail modifications noted on map submitted by Mark Henneke. (1) Remove hike & bike trail bisecting the field. (2) Re-align some of the existing mtn bike trails (away from road) (3) Designate an area for a pump track near the Mountain bike parking and trail head. (4) We support the expanded Mountain Bike area as identified on the map and have submitted a proposed route. We want to participate in planning, design, and construction of this and other re-routes or additions. Judy Ronkartz - 6/13/07

I'm a mountain biker. These trails were designed for mountain biking, with obstacles and features. Mountain bikers typically don't break new trails to avoid obstacles. John Howell - 6/13/07

I'm with the Austin ridge riders. I'm in favor of shaded areas, and thing existing trees should be used as much as possible. At Pedernales equestrian trailhead there are 2 shaded areas, 8x8, decomposed granite, 4 post, tin/metal roof. Maureen Howell - 6/13/07



Accessibility

Provide a shuttle to the park. Perhaps a CAPMETRO shuttle a few days a week? *

Accessible trails must be stabilized, have a compressed base. Trails have to be maintained so there are no ruts or eroded areas. Areas where concrete transitions to softer surfaces are often a problem when they erode. Trails should be at least 6' wide to allow two wheel chairs to pass comfortably.

The mid terrace level and river bank needs to be accessible for fishing. Could an accessible structure be built along the shore for fishing?

Port-o-lets need to be accessible.

Will an orientation map be provided? It would be helpful if the challenge level of the different trails were identified.

Check www.access-board.gov for new Outdoor Wilderness Regulations.

Make the Star Party site accessible.

Provide outlets on the outside of buildings for recharging chairs.

Make sure railings or other structures don't block views for people sitting in wheel chairs.

Provide a spigot at the water fountains.

Will there be an emergency call box?

Reserve Lands

I live in Houston and was unable to attend any of the public meetings regarding Reimers Park but I do have a few questions. First, I see that the area designated Pogue Springs Preserve is currently planned to have guided hiking/nature/birding tours. Are there any future plans for this area beyond the guided tours? Secondly, the area on the context map shown as Hogge Parkland Reserve. Just what are the plans for this area? Lastly, I spoke to someone with Travis County about one year ago, and they said the county had actually purchased more land than they originally intended and that they may be selling some of the land off. Is this still being considered? If not, when does the county intend to have a plan for the balance of the land acquired? Thanks for your assistance. The existing plan looks well thought out. William Wolf - 6/21/07

I have reviewed the Proposed Master Plan for Reimers Ranch Park and enthusiastically endorse the enhancements to the park. However, I noticed the area titled "Reimers Parkland Reserve" on the park map (pg.3) is not addressed. I would very much like to see all 2300 acres of the park, including the 1200 acre reserve, preserved. Since the 2005 bond election, there has been some speculation that these 1200 acres might be sold by Travis County for development. Voters who approved the bonds for open space and parkland were under the impression that all 2300 acres would be protected. A development adjacent to the park could have a negative impact on the park and would be a direct contradiction to voters' expectations.

With the approval of the planning for Reimers-Peacock Rd., the Travis County Commissioners have added value to the Parkland Reserve. I hope this was not done in order to facilitate the marketing of this 1200 acres. Please let Judge Biscoe and the Commissioners know that I support the preservation of all 2300 acres in the bond purchase. Pamela Reese - 6/27/07

Hello--I would like to register an additional comment regarding the Reimers Ranch Master Plan. I strongly encourage the Travis County Commissioners to retain ALL of the property that was acquired when the Reimers Ranch property was purchased. It's been brought to my attention that the county is considering selling all or part of a 1200 acre tract adjacent to the Reimers Ranch property and that property would be allowed to be developed with single family housing. I believe that property should be retained by the county for open space preservation and recreational activities. Thank you for your consideration. Hill Abel - 6/28/07

The community has a strong desire to keep all 2300 acres preserved. This is the key issue that I want to emphasize to you, we need more preserve land, not additional housing. The SW Travis County Growth Dialog growth plan committee needs to take the lead in acquiring even more land to meet the goal of 6000 preserve acres. Preserve this land for recharge and the protection of tributaries that flow into the River as well as the many critical environmental features found here. The "Reserve Land" also provides a natural setting for the park. Marcello Rodriguez - 6/29/07

The plan looks very good for the areas that it covers. My major comment is that the "reserve land" be considered a part of the whole park, that they be reviewed for appropriate use that will not damage their natural assets and that Travis County recognize that a 2300 acre park with the excellent natural assets of this one will be a treasure for us and future generations. Valarie Bristol - 6/29/07

For what it's worth, I, as a 20+ yr. land owner in Dripping Springs would appreciate the conservation of the entire 2300 acres of park land. I am a novice horse rider and understand that trails nearby are becoming more difficult to come by. There is great potential for this ranch park to provide natural riding trails. Thank you for your work on this project. Frances Busbey - 6/29/07

The Reimer's Ranch Park plan is beautiful. Thank you for creating this amazing new asset for Travis County. One important subject that isn't discussed in the plan is the future of the two tracks noted as "Reserve". We participated in the Southwest Travis County Growth Dialog where a consensus was reached for a goal of 6,000 acres to be set aside in this corner of the County. The purchase of the Reimers and Hogge properties take us part of the way there. Can we add language to the plan that moves us in the direction of permanent preservation of all 2300 acres that were purchased with 2005 bond election funds. There have been discussions about possibly selling some or even all of the "Reserve" lands, potentially for high density development. Although the back two tracks do not have river frontage, they have tremendous natural value including tributaries that feed the river. Voters spoke up loud and clear for water quality protection lands and given the opportunity again in 2010, it is likely we'll have an opportunity to purchase even more land with new bond money. Please let the plan reflect a 2300 acre preserve. Christy Muse - 7/1/07

Clothing Optional Use

As a member of the Naturist community in the Austin area, I would like to suggest that as part of the development plan for Reimer's Ranch Park, that an area or time be set aside for clothing optional use. Before

5.0 Appendix

you dismiss this idea out of hand, I would refer you to the usage statistics for Hippie Hollow/ McGreggor Park as a way of proving the demand for clothing optional use is there. I would suggest that a remote park with a large acreage and river frontage such as Reimer's Ranch is an ideal location for a managed clothing optional zone. There is precedent for this in state and national park areas where appropriate signage is used to prevent user conflicts. As Travis County plans for the next generation of park development, all users must be considered. As the county population grows, our one clothing optional destination will grow overcrowded and people will begin to use other areas that are unsanctioned. Much like mountain biking or other high interest activities, if not regulated, the activity will spill over into zones that may not be well suited for it. It is therefore in the interest of the county to plan for and manage a clothing optional zone within Reimer's Ranch Park that provides a beautiful natural alternative to Hippie Hollow at Lake Travis, now our only clothing optional destination. Naturism is a low impact activity, encompassing swimming, sunning and light hiking. There are stretches of river frontage within Reimer's Ranch Park that are lightly visited and do not interfere with other activities. Remember that clothing optional does not preclude clothed users. I have found most folks are not adverse to sharing their recreational space with nude users as long as signage is present to warn those that may be offended. Please consider establishing a clothing optional zone or designated trail for Naturist use in Reimer's Ranch Park. Steve Bosbach - 6/3/07

I was recently forwarded a letter from Steve Bosbach which I reproduce below regarding allowing limited clothing optional use of Reimer's Ranch. I want to state my wife and I, both professionals at UT, agree with this suggestion completely. We go to Hippie Hollow on some weekends to relax and are always amazed at the number of people who enjoy that park. We would prefer to go to the more beautiful Reimer's Ranch Park to skinny dip and hike a bit and would love to be able to do this naturally. Austin has a long tradition for clothing free recreation it would be wonderful to see it at your park. Sean Gulick - 6/4/07

I am a member of the Naturist community in the Austin area, and along with many others, I would like to suggest that as part of the development plan for Reimer's Ranch Park, an area or time be set aside for clothing optional use. Before you dismiss this idea out of hand, I would refer you to the usage statistics for Hippie Hollow/ McGreggor Park, which as you know, bring in more revenue than ALL OTHER parks combined. This alone indicates that the demand for clothing optional use is most certainly there. I would suggest that a remote park with a large acreage and river frontage such as Reimer's Ranch is an ideal location for a managed clothing optional zone. There is precedent for this in state and national park areas where appropriate signage is used to prevent user conflicts. As Travis County plans for the next generation of park development, all users must be considered. As the county population grows, our one clothing optional destination will grow overcrowded and people will begin to use other areas that are unsanctioned. Much like mountain biking or other high interest activities, if not regulated, the activity will spill over into zones that may not be well suited for it. It is therefore in the interest of the county to plan for and manage a clothing optional zone within Reimer's Ranch Park that provides a beautiful natural alternative to Lake Travis, which is now our only clothing optional destination. Naturism is a low impact activity, encompassing swimming, sunning and light hiking. There are stretches of river frontage within Reimer's Ranch Park that are lightly visited and do not interfere with other activities. Please do remember that clothing optional does not preclude clothed users. I have found most folks are not adverse to sharing their recreational space with nude users as long as signage is present to warn those that may be offended. Therefore I sincerely ask you to consider establishing a clothing optional zone or designated trail for Naturist use in Reimer's Ranch Park. Anne Ramsey - 6/7/07

Astronomy

I am very interested in making use of the dark skies in the park for stargazing. This would allow us to appreciate and have others share the expanse of the sky. What we would like is: 1) Access to the park at night 2) Road access to level area with clear horizon (no trees) and dark 3) Close to toilets 4) access to electricity for running astrophotography systems. Some provision for allowing individual night access in addition to official groups would be deeply appreciated. Andy Marquardt - 6/6/07

I'm an amateur astronomer and would like to have the "night shift" at the park, a non-competitive use. It would be great to have a place that is dark. We now use Canyon of the Eagles but it is far from Austin. We need a clear horizon - no trees. We also need to be close to car access, restrooms, and electricity (30 AMPS [a few]). We need a place where there are no lights, no places where cars are. Andy Marquardt - 6/6/07

I'm a member of the Austin Astronomical Society. We welcome stargazing opportunities at Reimers. Places like the one shown in photograph #27 are suitable. We need to be able to drive/trailer in equipment. We have an agreement with Canyon of the Eagles but it is very far away. There are no places close to Austin. We would like to have input on this use. There should be no conflicts with other users who use park in the day. Bruno Conegliano - 6/13/07

I am a member of the Austin Astronomical Society (AAS). I have been in contact with Michael Brewster (also an AAS member) and am aware that Travis County Parks would like to promote astronomy at Reimers. I think members of the AAS would share this goal and like to help. The AAS has been looking for an observing location that is closer to Austin than our observatory at Canyon of the Eagles on the NE corner of Lake Buchanan. We would like to use this "close in" site for both public star parties and for private use. One of the private uses is for our "Young Astronomers" program for kids ages 9 to 17. We are finding that many parents are unwilling to make the ~1.5 hour drive to Canyon of the Eagles to let their kids observe under dark skies. We have been looking for a semi-dark location that is closer in and Reimers Ranch seems like a good match. Public uses might include our annual Austin Under the Stars event for the people of Austin and surrounding communities as well as (possibly) monthly star parties at Reimers. This past Saturday I and another club member met with Michael Brewster at the Reimers and Michael showed us some potential observing areas within the park. One area that looks particularly interesting was the "Commons" field. The other area the showed potential was the "Pavilion" area. the latter would be good for holding slide presentations wither before the star party or in the event of cloudy weather. I am aware that one of the difficulties will be figuring out how to permit after hours access to the park. I think we could persuade some AAS members to organize regular public star gazing events in exchange for allowing occasional after hours private use. Initially this might need to be an agreement between the individuals involved rather than the club as a whole. We would be open to other possibilities as well. I am heading the committee to locate a new "close in" observing site. I would be most happy to talk with you further about how the AAS and Reimers can work together to make the park a successful venue for public astronomy. Bill Tschumy - 6/25/07

Climbing

What will be done to the existing trails in the canyon? New users are confused as to which way to go in the canyon. Will there be trail maps for orientation and advertising types of trails? Not recorded - 6/5/07

The existing bouldering area is not noted on the master plan drawing. Is this an oversight or a change in use? Not Recorded - 6/5/07



5.0 Appendix

I'm with the Central Texas Mountaineers. I'm pleased with the plan. The plan accounts for our requests. The trail along the bluff does need to be away from the bluff. Gary Ellis - 6/7/07

Shade is important. Structures should be aesthetic, blend into the environment. We need shade for meeting places. Reimers is nationally recognized as a climbing destination. It's use is likely to grow quickly. Troy Wilson - 6/13/07

Birding

As a birder, I would like the least amount of development in the park as possible, as few buildings and structures as possible. Lauren Bauer - 6/1/07

The wild turkey habitat roosts over 75 turkeys. Also we have sighted over a 5 year period juvenile bald eagles. It would be a mistake to have mountain bikers, trails, and rock climbing. Boom boxes cause great havoc to all. When Pogue owned the land many rock climber also caused havoc with the blue heron. Pete & Karen Peterson - 6/6/07

Sports Fields

Where will the park be and why aren't there any sports fields for youth sports. I just had this conversation with Commissioner Daugherty last week. There are tons of kids and not many sports fields in western Travis County. The City of Lakeway Park has very few, the proposed Bee Cave Park has none and now it seems the Travis Co. park has none. The only sports complex in western Travis Co. is the Lake Travis Youth Association (LYA) Field of Dreams sports complex on Hwy. 71 near RR 620. I helped develop that complex in the 90's (was on their Board of Directors from 1992 - 002) and the demand for fields has greatly outpaced supply. It is the county/cities responsibility to provide sports fields for the youth. Please enter this in the official public comments. Thank you and I will be at the meetings. Ross Frie - 5/30/07

Project Schedule

What is the time line for Master Plan approval and for each Tier of the Plan? Judi Ronkartz - 5/30/07

Interpretive Facilities

I recommend that the geology of Reimers Ranch Park be included in your plan for educational purposes for the public. This may have already been considered and I hope it has. Many parks have illustrations of the geology, geomorphology, and hydrogeology at park headquarters and/or along trails. The Bureau of Economic Geology, out State Geological Survey, may be of assistance. James Sansom - 6/10/07

Working Together

I've been visiting this park for years, and it has evolved. The rock climbers first came in illegally and then Milton allowed it, and the fisherman who had been using it for years accepted them. We need to work together, they way we've always have at the ranch. David Houston - 6/6/07

Park Facilities

What will structures be like? They should be "low impact". Not Recorded - 6/5/07

What are the park roads going to be made of? Not Recorded - 6/5/07

Will the building have solar heating or rain water harvesting? Forest Cook - 6/5/07

Shade from arbors instead of hard roofs would be nice. Judi Ronkartz - 6/13/07

Why isn't there any camping? Is Travis County open to camping in their parks? Lee Huntoon - 6/13/07

What is the Commons going to be used for? Not Recorded -6/13/07

Boulders could be used for seating. Not Recorded - 6/13/07

Multiple Interests

I reviewed the park plan. I am so impressed with the professionalism of this document. Listed are features I believe will enhance the users' experience. 1. I like a unisex restroom at the front gate. Folks will drive a long way, drink their Starbucks coffee and then get to the gate and while the driver is paying the other occupants will want to go. They don't want to wait until they find and get to their parking spot. 2. I see the word "bus" in the document perhaps indicating larger groups to the commons and picnic area. To me this means a different restroom allocation. I recommend at least 2:1 of women to men. I also recommend a unisex to increase this ratio for events, allow fathers to take in daughters and mothers to take in sons. With large groups people want to keep an eye on their child. Maybe the design can be a facility configurable design instead of hard constructed. 3. For 'runners' it would be great if there was signage with mile markers from the front gate and commons area. Runners will like to get out at the front gate and run to their area while their partner unpacks the car for their sport. All the other features are focused on the mountain bike user area. 2. The women's restroom lighting should be exceptional and exceed standards for safety. 3. The women's restroom door should be highly visible from parking area with privacy panel for safety. 4. The women's restroom should have a dry vanity area with plugs. 5. The wet vanity area will need space to put items. A pedestal vanity is not recommended. 6. The women's restroom...a nice to have...would be private changing area separate from the toilets. Now for the mountain bike restroom common area. 7. In addition to outdoor showers I am recommending a foot shower. This how I think mountain bikers will use the restroom common area. We do laps. In between laps we want to wash mud and dirt off our lower legs, let them dry, change to clean socks and do another lap. It would be nice if the footshower had a bench for sitting while cleaning feet. 8. I am requesting an upper body washing trough. Same lap principal as above except we want to take our shirts off, splash our face, cool off our head and splash the underarms and change to a dry shirt. We do this when we just get of the bike with our group and the whole group will go to the trough and foot shower area. We will freshen up and go for another lap. At the end of our exercise we will take a the big shower. The trough area structure can fit in with the proposed character study structure design. 9. These areas do not need to be considered water hogs. This area will need to be shaded. Kymn Cardosa - 6/6/07

I hike every week at Reimers and like the primitive nature and solitude of the place. Could you end the multi-use trail that connects to the primitive trail at the mouth of Pogue Canyon at the top so the primitive experience along the river stays primitive at this spot? Also, the covered drive at the entry station may be a problem for cars with bikes on top. Jim Bellevue - 6/6/07

5.0 Appendix

The existing bouldering areas need to be shown on the map. I'm concerned that the trails along the bluff, that may be too close to the ledge. There may be too much parking along the river. Could it be consolidated?
Tommy Ruiz - 6/6/07

I was wondering if the buildings will be named? I propose this instead of mountain bike women's restroom or main pavilion. Any names would work. How about rare birds of Travis County? Here are examples: 1. Henslow's Sparrow Hall - main area 2. Wood Thrush Cabin 3. Buff-Bellied Hummingbird Hut - Women's RR in Mbike area 4. Blackpoll Warbler Den - Men's RR in Mbike area 5. Vermilion Flycatcher Lounge 6. Snowly Plover Chamber. Kymn Cardosa - 6/7/07

There is no equestrian use shown in the existing plan. What are the rules for other animals? Are dogs allowed? Will canoes be allowed in the river? Will there be vendors? Stargazing has been mentioned. Will there be lighting? Will it be low levels? Will there be any camping? All are great opportunities. Will you charge to enter? Will there be vending machines? Have you planned for bus parking and large group use? Are there plans for a historic educational component, with pictures, displays? Vernagene Mott - 6/11/07

There is no equestrian use shown in the existing plan. What are the rules for other animals? Are dogs allowed? Will canoes be allowed in the river? Will there be vendors? Stargazing has been mentioned. Will there be lighting? Will it be low levels? Will there be any camping? All are great opportunities. Will you charge to enter? Will there be vending machines? Troy Wilson - 6/11/07

Please define the reserve and preserve. \$5.1 million is used for construction. What is the rest used for? Operations budget will be affected by park development. How many of the amenities that have been requested are included in the master plan? Brenda DeWitt - 6/11/07

What is the status of the rope swing? Is there a maximum limit on parking? John Howell - 6/13/07

I think the Master Plan as depicted today, 6/13/07, is an ideal vision for Reimers. I would like to see the natural characteristics of the property preserved to the greatest extent possible. The historic users group of fisherman, climbers, mountain bikers and hikers is an appropriate use for Reimers. I am ok with equestrians access but would prefer to have some segregated trail use that would preserve MTB Travis from the possible impact of horses. I believe horses and mountain bikers can share the trail in some situations although if wet horses can have a major impact on our clay based soils. I am strongly against any development of the park with ball fields for organized team sports. There are very few parks in Austin, kept in an undeveloped state and this hill country jewel should retain as much wildness as possible. Thanks for your efforts. Hill Abell - 6/13/07

Here are my comments on the Reimers Ranch Park plan. The plans' primary flaw is its lack of planning for the reserve tracks. I believe the following plan outline would meet the expectations of the voters who passed the bond election: * the reserve tracks could be sold for development only if, at closing, alternative parkland meeting or exceeding its acreage is acquired. Without meeting or exceeding the acreage, the "open space" provision of the bond election is not satisfied. County officials have expressed interest in selling these reserves to acquire more Pedernales riverfront. My familiarity of the real estate market has me estimate that the preserves are not valuable enough to fund a significant section of riverfront. Even if they are valuable enough, they have less value than riverfront and so their use in a swap would reduce the public's open space. ** the Hogge Parkland Preserve is immensely exciting for further development of mountain biking trails. Public comment showed that the existing Reimers bike trails are excessively winding due to lack of terrain features. Hogge Parkland Reserve has huge, sprawling changes in land contours as well as creek crossings that mountain bikers love on their trails. (Coming up out of a creek bed provides the physical and technical challenge.) If equestrian trails are developed, HPR provides a lot of acreage. ** a timeline should be placed on the possible swap of the preserve tracks, after which they should be developed lightly with mountain biking and hiking trails. I've been part of discussions about the number of parking areas along the river. Several individuals would like to see one of the parking areas eliminated for aesthetic reasons. If this feedback is taken, I urge you to retain River Parking #2 because of its versatility accessing Pogue Hollow for every day use and events such as the rock climbing competition. It also is near the denser sets of mountain bike trails on the west side. The Development Program lists cedar control. Also on Pogue Hollow east of Johnny's Homestead, in the big open field, many mesquite trees are growing up and threatening spring output. Mesquites grow back when cut and so extra care must be taken and chemicals used. Chemical introduction in the recharge zone can be spread out over years by phasing the mesquite elimination. It's good to see Milton's family history will be told. It would be nice to see Johnny and Lenora Reimers' story told in reference to Pogue Hollow. (Sources: Lenora Reimers, currently in poor health; LV Collier, her brother, he's been in a fight with cancer; area friends Mel Mathis, Glenda McEldry, Tom Tiner.) The Hogge story on Pogue Hollow spans only 6 years, but to me the interesting element is that a sport (rock climbing) was one of the biggest reasons we purchased the ranch and the biggest factor in our selling the ranch as parkland. I feel all other elements of the plan are excellent. Thanks to you and all county staff for the great job with this plan.
John Hogge - 6/28/07



5.3 Travis County's Response to Public Review Comments

Completed by Travis County TNR Planning Program

Travis County Transportation and Natural Resources (TNR) received comments on the proposed master plan through email, telephone, and public meeting discussions. The specific comments we received are provided in the "Public Comments on Milton Reimers Ranch Park Master Plan" section that follows. A summary of the issues and TNR's responses are provided below. The specific topics addressed in this section are as follows:

- Equestrian Use
- Mountain Biking
- Accessibility
- Parkland Reserves
- Clothing Optional Use
- Astronomy
- Climbing
- Birding
- Trails
- Project Schedule
- Cedar Abatement
- Future Plans
- Roads and Parking
- Camping
- Buildings
- Rope Swing
- Sport Fields
- Interpretive Amenities
- Memorandums or Agreement
- Dog
- Canoes
- Working Together

Equestrian Use

The single-most commented upon issue was the failure of Travis County to include equestrian use in the park. Equestrians expressed their disappointment with the County and made specific requests relative to access: allow equestrians to use 1) the proposed perimeter hike and bike trail, 2) the existing mountain biking trails, and/or 3) the adjacent Reserve lands. They said they were willing to help build trails, and some emphasized the importance of building the trails correctly from the outset so that they are sustainable. Having water at the trailhead was also identified as a need.

Travis County explained that the reason equestrian use had not been included in the proposed park plan was because there wasn't enough space in the park, according to recommended minimum standards, to accommodate horseback riding: a 10-mile trail that allows for a + 3 hour ride, for example, would not fit into the park.

With equestrians saying, however, that the perimeter trail would be acceptable, Travis County decided that the perimeter trail would be developed as a multi-use trail for hikers, bikers, and horse back riders. It will be sufficiently wide (15') to minimize conflicts between the different user groups. Trail head parking for equestrians will be provided at an existing shed, and water will be provided if feasible.

With respect to having access to the mountain biking trail and the reserve lands, neither will be made available for equestrian use. Although the International Mountain Bikers Association (IBMA) recognizes

that trails can be built to accommodate multiple users, the mountain biking trails at this park were built by mountain bikers for mountain biking only and will remain so. With respect to the parkland reserve lands, the County has not yet decided how this land will be managed or developed over the long term and does not want to commit to a specific use at this time.

Mountain Biking

Many mountain bikers provided input during the public review process, commenting on a variety of issues: equestrian use of their trails, sustainable design and development of new mountain biking trails, overall facility improvements, the development of a pump track, and the inappropriateness of a covered entranceway at the fee booth. Mountain bikers also commented on other types of trails but those comments are addressed in the "Trails" section below.

Single-use Mountain Biking Trails: As noted above, the mountain biking trails were built by mountain bikers for mountain biking and will not be opened to equestrian use, are not wide enough and nor have enough vertical clearance or suitable alignments for horseback riding. An exception to the single-use rule for the mountain biking trails is the Black Diamond section; this will be dual-purpose, a trail that adventuresome hikers will be allowed to use also. All mountain biking trails will be signed as to whom may use them.

Facility Improvements: Many improvements will be made to upgrade mountain biking facilities:

- The mountain biking trail system will be assessed and modified as required to improve their sustainability and the riding experience; particular attention will be focused on developing more opportunities for intermediate riders. Sustainable trails for advanced riders will also be added to the system on the east side of the "hill". Representatives of the mountain biking community will be included in the field design of improvements and invited to help with implementing improvements. Places along the trails where bikers may stop and enjoy the views will be also developed.
- The parking lot will be relocated (the exact location to be determined in the field with representatives of the mountain biking community) and trailhead facilities developed which will include a restroom with outdoor shower, shaded areas, benches, tables, and information kiosk.
- A pump track will be built, possibly incorporating an abandoned stock pond into its design.

Special Event Camping: Camping will be allowed in the park for only those individuals responsible for running special events, such as a weekend mountain bike rally.

Entry Station: The fee collection window at the entry station will not be roofed so cars with roof-mounted bikes and other tall vehicles will be able to drive by the fee collection window.

Accessibility

ADAPT is a grass-roots advocacy group for the rights of the disabled, and members commented on their interests and concerns. Having public transportation to the park for disabled people, several times a week, was considered a priority. They also described common trail and facility design problems, supported plans to build accessible trails on the bluff, and advocated for access to the river for fishing.

Travis County agrees that public transport to the park for disabled people is an excellent idea, and will work to find a provider, such as CAPMETRO, for this service. We'll also incorporate ADAPT's recommendations into facility designs:

- Accessible trails will be compacted to provide an even, stable surface, will not have an excessive cross slope, and will be wide enough for two wheelchairs to pass.
- Design solutions will be explored to minimize erosion problems such as the one that often occurs at the interface of hard surfaced paths, e.g., concrete, with softer surface path e.g., decomposed granite paths.
- Electrical outlets on the outside of buildings are not required but would allow batteries for electric wheel chairs to be recharged.
- Barriers that are constructed at overlooks will not interfere with site lines for people using wheelchairs

Providing access to the river is more challenging: although there are some gently sloped areas that transverse the river canyon wall toward the river, they don't reach it; the County also is not going to build any structures (accessible or otherwise) in the river canyon because of flooding; and nor are there funds in this first phase of construction for such improvements (funds are allocated to bond proposed facilities). TNR, however, will continue to explore ways for providing access to the river, and will make upland facilities accessible.

Parkland Reserve Lands

Equestrians and people interested in the preservation of open space in southwest Travis County asked about the status of the parkland reserve lands adjacent to the park. Equestrians want access for horseback riding and conservationists oppose selling the land for development, even though the proceeds from the sale would be used to buy parkland elsewhere in southwest Travis County. They argued that the sale and development of this land would contradict bond voters' expectations and would be detrimental to the park and water quality of Pogue Springs and the Pedernales River. And they questioned whether the design and future development of Reimers-Peacock Road was undertaken by the County to improve the marketability of the parkland reserve lands. It was also noted that Travis County needs to support the SW Travis County Growth Dialogue goal of preserving 6000 acres in the area by not selling the reserve land and, instead, preserve more open space.

Travis County, at this time, has not made a decision as to whether this land will be sold, and wants to maintain its options. The County recognizes the demand for recreational access to this land and the desire to preserve it, and will factor this into its decision-making.

Clothing Optional Use

Travis County will not provide a clothing optional area of the park because there is no historic use and because Travis County attorney's interpretation of state law would require denying access to the park to anyone under the age of 18.

Astronomy

A place will be made available for astronomers in the park. The County agrees that "The Commons" may be the best location since it is a large area clear of trees but will evaluate other areas in the park with respect to the astronomers' needs: to have parking and electricity nearby so heavy equipment doesn't have to be carried far and equipment can be powered.

The only lights in the park will be motion activated lights at the park staff buildings which will be turned off after staff leaves the park so light pollution from the park will not be a problem. Because the park is closed at night, special permits for night use will be issued to those astronomers that host "star parties" for the general public.

Climbing

Improvements to the trails will be minimal, focusing on minimizing conflict between rock climbers and passing hikers. Hiking trails will be rerouted (for short distance) where possible, and small staging and waiting areas will be developed for rock climbers, using locally gathered rocks to construct small retaining walls and provide seating. Maps and signage will also be provided to orient new climbers. Representatives of the climbing community will be asked to help field design improvements.

Changes will also be made at the trailhead. Shade from trees and/or structures will be provided to accommodate small group meetings. The design of structures will be compatible with the environment and Hill Country aesthetics. The parking lot will also be moved away from the canyon, and a vegetative buffer will be planted between the lot and canyon to mitigate non-point source pollution from the lot.

With respect to other trails, the accessible Bluff Trail will be aligned so that it will not follow the canyon edge, approaching it only at select places for viewing the landscape.

The existing bouldering area has been noted on the plan.

Birding

Birders are concerned that new park development and increased recreational use will negatively impact bird habitat. A specific concern is that expanding rock climbing to the area near the confluence of Pogue Springs and the river and developing a multi-use trail nearby will be detrimental to the habitat where turkeys and juvenile eagles have been sited. It was also stated that rock climbers "...caused havoc with the blue heron."



5.0 Appendix

Travis County agrees that this is an important concern, and is committed to managing the interface of recreators and wildlife at this park, as it does at all County parks. This situation will be monitored. Also, habitats will be managed so that they remain suitable so wildlife may continue to roost, breed, and/or forage there.

Trails

There were numerous comments relating to the overall trail system. In response, Travis County will make sure that all trails will be designed so that they are separated from roadways to optimize the walking and riding experience. We'll also eliminate two Hike and Bike trail segments: the segment that extends across the field (accessing the "Hill Top" on the proposed plan) -- because it is unnecessary -- and the south segment of the loop trail east of River View parking #2 -- because it intersects existing mountain biking trails too often. The segment of the ranch road that extends from the bluff to the river at the mouth of Pogue Springs Canyon will not be eliminated because of its historic use.

With respect to trail amenities, the County will provide benches and stopping places along the trails so people can enjoy views. The pedestrian bridge across the canyon, however, will be eliminated because people successfully argued that it is a costly and too intrusive in the canyon. Since Travis County doesn't own the property that the "Alamo" sits on, trails can not be extended to the set.

Project Time Frame

The master plan is tentatively scheduled to go to Commissioners Court August 14, 2007 for adoption. Construction is projected to start July 2008, and will be completed in 2009. The next phases of improvements will be undertaken as funds become available, typically through bond elections that are held every 4-5 years.

Cedar Abatement

Milton Reimers regularly cleared ashe juniper (cedar) from his land to keep it from crowding out other plants and drying up springs. Travis County will do the same in order to maintain the open savannah and grassland landscapes which are valued for both their environmental and visual qualities.

Future Plans

People asked about future plans for Pogue Springs Preserve, Johnny's Homestead, and The Commons.

Pogue Springs will not be developed and will be accessed through guided field trips. The park boundary has been revised to follow the west canyon rim (instead of the fence line, so there will be visual access from the park. How Johnny's Homestead will be "developed" is still being evaluated. There are limited funds available for preservation work and other improvements in this first phase of work at the park. The commons will be developed for passive recreational use.

Roads/Parking

The proposed parking along the river bluff was not well received by many. Travis County, however, is eliminating parking in the river canyon so it is necessary to provide parking along the bluff ...for fisherman and other people wanting to access the river to use. We also feel that the use needs to be spread along the river instead of concentrated in one area, and that smaller, separated parking lots will be more functional and have less of an environmental and visual impact than one large parking lot (as suggested by many).

Roads will be asphalt, a type of treatment called "chip seal" that the County uses on rural roads. Bus parking will be provided. And while less paving would cost less, the County feels that they are providing the appropriate number of parking spaces.

Camping

Travis County is not providing camping for several reasons: there is camping nearby at Pace Bend Park; there hasn't been camping at Milton Reimers Ranch Park in recent years; and camping dramatically impacts operational costs. Camping will be allowed for special events, however.

Buildings

Travis County is planning and designing buildings to have a minimal impact on the environment, and to be compatible with the Hill Country, ranch aesthetic. They will be constructed with a limestone veneer and galvanized roof. Rainwater harvesting was considered but the buildings are too small for it to be cost effective. Solar heating is not necessary for the restrooms, but will be considered for the maintenance building.

The restrooms will be comparable to those at other parks.

- They will be naturally ventilated and well lit.
- The larger restroom will have a 2:1 ratio of women to men fixtures; there will not be a public unisex restroom (the one at the entry station is for staff use only).
- Restrooms will also be sited for safety (i.e., visible from parking and other high-use areas). Privacy panels will be built at entrances.
- Restrooms will have a counter at the lavatories with receptacles.

Shade structures will be built at trailheads where people gather to complement shade provided by trees. Arbors will also be considered.

Rope Swing

The rope swing is taken down because of public safety reasons.



Sports Fields

There are no sports fields at this park because there is not an adequate supply of water. Too many trees would have to be removed and too much grading would be required to construct the fields, something that many people objected to in the bond public review process. The Commons, however, will serve as an open play area.

Interpretive Amenities

Natural features of the site will be interpreted but a comprehensive interpretation may not be completed in the first phase of the project. There will be a history kiosk dedicated to the Reimers family history, and an interpretive nature trail (content yet to be designed).

Memorandum of Agreements

Travis County will consider executing memorandum of agreements with interested stakeholder groups.

Dogs

Dogs are allowed in the park but must be on leashes.

Canoes

Canoes are allowed in the river but there are no plans at this time to have a vendor renting them.

Entrance Fee

The entrance fee for the park is \$8.00 per vehicle.

Working Together

Travis County will support the spirit of tolerance and mutual respect that exists between different stakeholder groups using the park through careful design and inclusive planning. This place has been a destination for fisherman for generations, who learned to share their park with climbers, who, in turn, learned to share their park with mountain bikers: new users will be asked to respect old, and old users, new.