

Bexar County

“Our mission is to build a better community through quality service.”



March 26, 2008

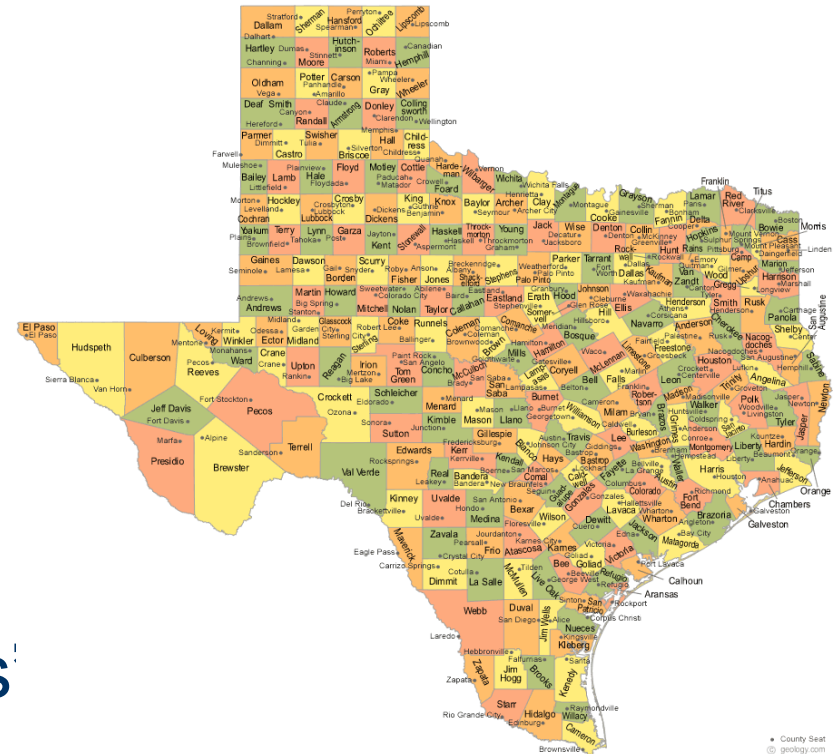
Table of Contents

- Overview of County Government...3
- Organizational Chart.....6
- Elected Officials.....7
- Appointed Officials.....20
- Bexar County Departments.....26

Overview of County Government

254 Counties in Texas

- Subdivision of State
 - Limited Power
 - Texas Constitution
 - State Statutes
 - Uniform Structure
 - “Checks and Balances”



Overview of County Government

COUNTY

- Created by State
- Not granted charter
- Primarily performs functions of the state
- Limited powers by State Constitution and State Legislature

CITY

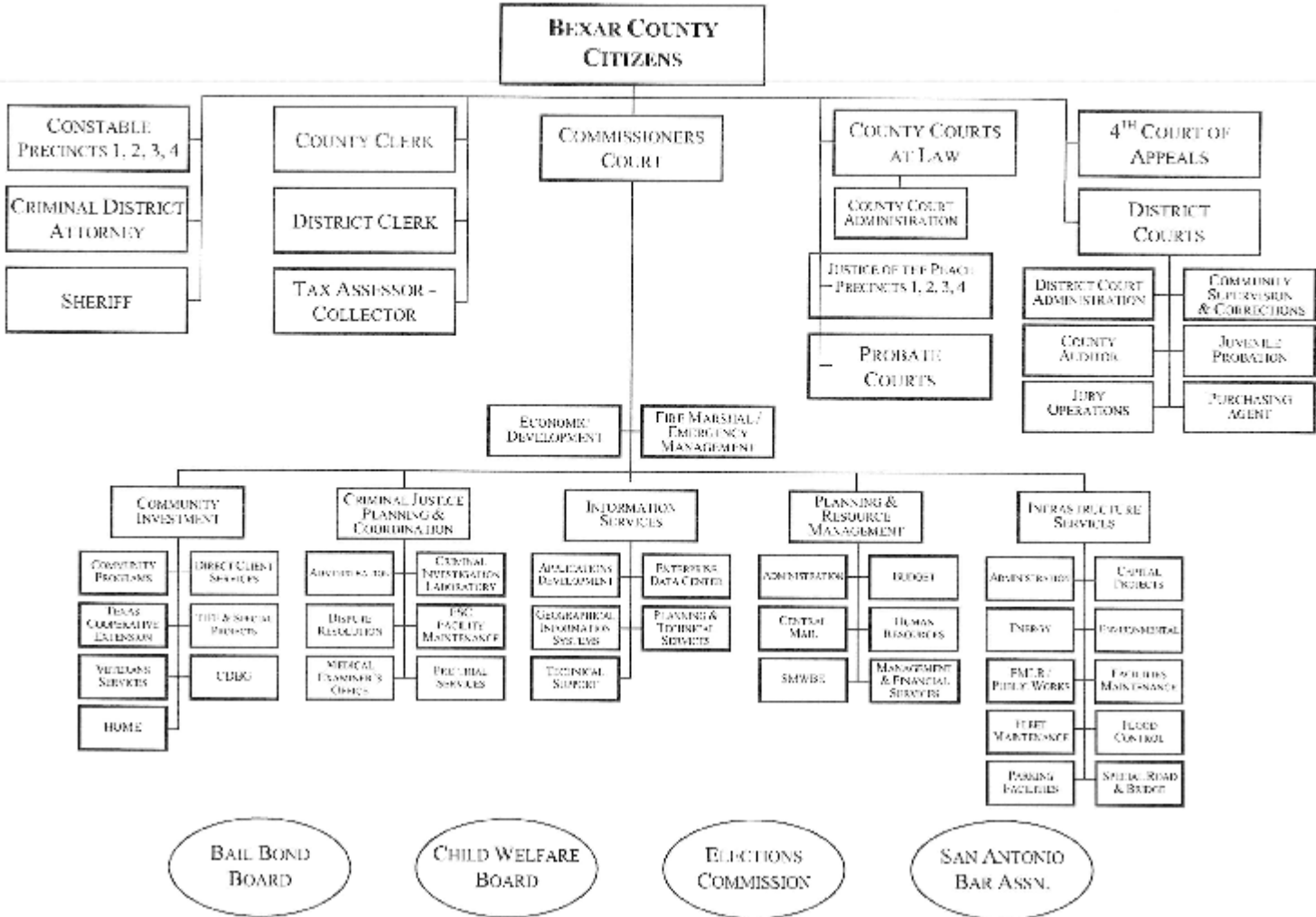
- Created at request of local citizens
- Granted a charter
- Primarily serves local residents
- Limited primarily by charter

County Functions

- Criminal Justice
- Public Safety
- Fire Marshal
- Medical Examiner
- Law Enforcement
- Juvenile Justice
- Civil Courts
- Public Records
- Tax Collection
- Elections
- Streets and Drainage
- Economic Development
- Quality of Life

Bexar County Organizational Chart

BEXAR COUNTY ORGANIZATIONAL CHART



County Elected Officials

- County Judge
- County Commissioners
- District Attorney
- Sheriff
- County Clerk
- District Clerk
- Tax Assessor-Collector
- District Court Judges
- County Court Judges
- Probate Court Judges
- Justices of the Peace
- Constables

Elected Officials: Commissioners Court

- Four Commissioners and County Judge
- Adopt county budget
- Determine county tax rate
- Approve Hospital District tax rate
- Supervise and control the county courthouse, county buildings and facilities
- Fill vacancies in some elected and appointive positions
- Approve most contracts in name of county
- Build and maintain county roads and bridges
- Administer welfare programs, parks and playgrounds
- Make other decisions relating to county welfare

Elected Officials: District Attorney

- Investigates, prepares, prosecutes and appeals all criminal cases except Municipal Class C Misdemeanors
- Prepares protective orders and mental health commitments and researches, prepares, and litigates asset and bond forfeiture cases
- Researches, prepares and litigates civil suits filed against the County or its elected or appointed officials
- Prepares contracts for Commissioners Court
- Represents County and its officials

Elected Officials: Sheriff

- Law enforcement in unincorporated areas
- Civil and criminal warrant service
- Security for all Bexar County courts, Justice Center and Courthouse
- Organized Crime, Intelligence and Vice Units
- Responsible for Adult Detention Center
 - Fingerprints, photographs, processes all inmates; responsible for storage of personal property
 - Provides supervision for all inmates, meals, sanitary facilities, recreation, rehabilitative programs and law library for inmates

Elected Officials: County Clerk

- Records Division indexes, copies, exhibits, and preserves land and personal official records of Bexar County and citizens:
 - Deeds, deeds of trust, abstracts of judgment, UCC documents, prenuptial agreements, military discharges, hospital liens, mechanic liens, federal tax liens, marriage licenses, and assumed business names
 - Deeds Unit maintains historical records dating from 1699 to 1836
 - Vital Statistics maintains business name records and marriage records from 1836 to present, birth and death records prior to 1967, school records, cattle brands, and warehouse bonds
- Responsible for duties, powers, and functions of County Treasurer (Treasurer abolished, 1985)
 - Receives, records, and deposits daily all monetary receipts collected by various County operations

Elected Officials: County Clerk

- Statutory Clerk for Bexar County's 12 County Courts at Law
 - Civil Suits up to \$100,000
 - Criminal Class A and B misdemeanors
 - Bond Forfeiture Cases
- Clerk of County's Two Probate Courts
 - Files, prepares, preserves permanent record of wills, administrations, guardianships, condemnations, related matters
- Responsible for Mental Health Division
 - Coordinates mental health patient activity in 30-county area
 - Files and maintains records, docket hearings related to probable cause, commitment, chemical/substance abuse, mental retardation cases

Elected Officials: District Clerk

- Provides support services to all Criminal, Juvenile and Civil District Courts
- Records acts and proceedings of the Courts, enters all judgments of the Courts and records all issued executions and returns on executions
- Prepares annual written statement of fines and jury fees received and operates the Register of the Court
- Indexes and maintains District Court records
- Processes passport applications

Elected Officials: Tax Assessor-Collector

- Collects current and delinquent ad valorem taxes on real and personal property for Bexar County and 36 other taxing units, including the City of San Antonio
- Acts as agent for TXDOT-Division of Motor Vehicles and State Comptroller in registering, licensing, titling and collecting sales tax on motor vehicles in Bexar County

Elected Officials: District Court Judges

- 13 Civil, nine Criminal and two Juvenile Courts
- Criminal District Courts have original jurisdiction over all criminal matters
- Civil District Courts have original and appellate jurisdiction over all civil matters
- Juvenile courts adjudicate all cases involving juveniles under 17 years of age, charged with both felony and misdemeanor offenses
- Jury Operations under supervision of District Court Administrator--coordinate and administer qualifications, notifications, exemptions, excuses, selection, service and compensations of petit jurors for City and County

Elected Officials: County Court Judges

- Three Civil, nine Criminal Courts
- Jurisdiction in civil cases \$500 - \$100,000
- General jurisdiction in misdemeanor criminal cases where punishment may be fine not to exceed \$4,000 or jail sentence not exceeding 2 years

Elected Officials: Probate Court Judges

- Bexar County's two Statutory Probate Courts have jurisdiction over all matters or proceedings related to the estate of a decedent
- General jurisdiction over all applications, petitions, motions for probate, administrations, guardianships, and mental health matters

Elected Officials: Justices of the Peace

- Preside over Justice and Small Claims Court
- Magistrate for juvenile warnings, felony warrants, and examining trials
- Jurisdiction includes civil disputes and small claims of \$10,000 or less and criminal cases on Class C misdemeanors of \$500 or less
- Conduct hearings, perform marriage ceremonies, serve as notary public and handle truancy cases
- Office responsible for collecting fees of Court, issuing warrants, various types of civil process, issuance of summons and monitoring compliance of mandatory drug and alcohol rehabilitation cases

Elected Officials: Constables

- First level law enforcement
- Serve civil and criminal process originating in JP Courts, District Courts and County Courts-At-Law
- Provide bailiff services to JP Courts, transport prisoners and summon jurors

Appointed Officials

- Auditor
- Elections Administrator
- Purchasing Agent
- Adult Supervision (Probation)
- Juvenile Probation

Appointed Officials: Auditor

- 24 District Judges appoint Auditor
- Chief Financial Officer for the County
- Maintains all financial records, processes all financial transactions, and produces monthly and annual financial reports
- Audits all County offices

Appointed Officials: Elections Administrator

- Elections Administrator under supervision of Elections Commission
- Administers elections and serves as County Voter Registrar

Appointed Officials: Purchasing Agent

- Appointed by Committee of three District Judges and two Commissioners
- Supervises all purchases made by the County by competitive bids or proposals and directly procures all supplies, equipment and services, except real property and professional services
- Maintains fixed assets inventory, transfers supplies and materials as necessary and disposes of surplus property

Appointed Officials: Adult Supervision (Probation)

- Director appointed by District Judges
- Responsible for supervision of all individuals within Bexar County who have been convicted of a criminal offense and placed on probation by a District or County Court at Law

Appointed Officials: Juvenile Probation

- Supervised by Juvenile Board
- Provides array of special services to juvenile offenders
- Responsible for operations and management:
 - Mission Road Detention Center--192 bed pre-adjudication holding facility
 - Cyndi Taylor Krier Juvenile Correctional Treatment Center--96 bed post-adjudication facility

Bexar County Departments

- Five Department Directors are appointed by and are under the supervision of Commissioners Court
 - Community Investment
 - Criminal Justice Planning and Coordination
 - Information Services
 - Infrastructure Services
 - Planning and Resource Management
- The offices of Economic Development, Government Relations, and the Fire Marshal/Emergency Management also report directly to Commissioners Court

Bexar County Departments

- Community Investment Department
 - Aurora Sanchez, Director
 - Community Programs
 - Direct Client Services
 - Texas Cooperative Extension
 - TIF & Special Projects
 - Veterans Services
 - CDBG
 - HOME
 - Community and Mental Health

Bexar County Departments

- Criminal Justice Planning and Coordination Department
 - Keith Charlton, Director
 - Administration
 - Criminal Investigation Laboratory
 - Dispute Resolution
 - FSC Facility Maintenance
 - Medical Examiner's Office
 - Pre-trial Services

Bexar County Departments

- Information Services Department
 - David Morgan, Director
 - Applications Development
 - Enterprise Data Center
 - Geographic Information Systems
 - Planning & Technical Services
 - Technical Support

Bexar County Departments

- Infrastructure Services Department
 - Joe Aceves, Director
 - Administration
 - Capital Projects
 - Energy
 - Environmental
 - FMLR/Public Works
 - Facilities Maintenance
 - Fleet Maintenance
 - Flood Control
 - Parking Facilities
 - Special Road & Bridge

Bexar County Departments

- Planning and Resource Management Department
 - David Smith, Director
 - Administration
 - Budget
 - Central Mail
 - Human Resources
 - SMWBE
 - Management & Financial Services

Bexar County

“Our mission is to build a better community through quality service.”



March 26, 2008