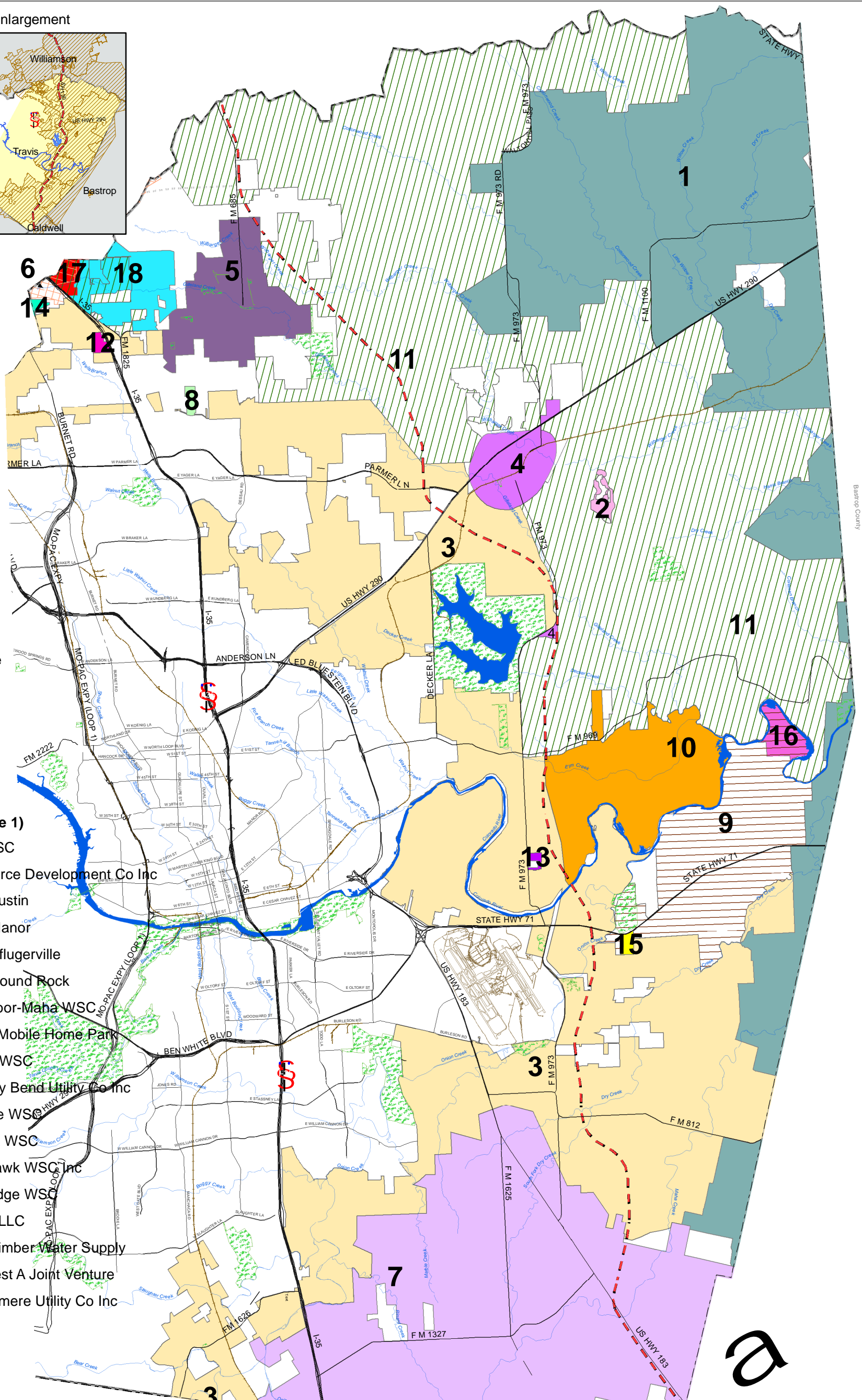
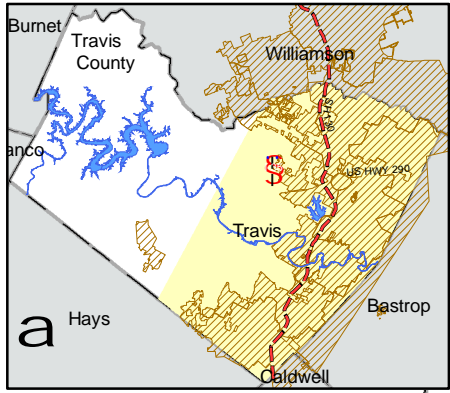


Area of Enlargement



Legend

- Major Road
- SH 130
- Railroad
- Park/Preserve
- Water Body
- Creek

Water CCNs (Type 1)

- 1, Aqua WSC
- 2, Aquasource Development Co Inc
- 3, City of Austin
- 4, City of Manor
- 5, City of Pflugerville
- 6, City of Round Rock
- 7, Creedmoor-Maha WSC
- 8, Dessau Mobile Home Park
- 9, Garfield WSC
- 10, Hornsby Bend Utility Co Inc
- 11, Manville WSC
- 12, Marsha WSC
- 13, Nighthawk WSC Inc
- 14, Northridge WSC
- 15, Plan Z LLC
- 16, River Timber Water Supply
- 17, TP Invest A Joint Venture
- 18, Windermere Utility Co Inc

**Map Disclaimer:** Map provided "as-is" with no warranties of any kind. CCN data provided by TCEQ via e-mail on January 13, 2006. Manville WSC and Garfield WSC CCNs had changes on 1/25/06, changes updated to map on 05/12/06. Note: CCN boundaries sometimes overlap, see hashed areas. TCEQ's CCN data is the official source of CCN boundaries. See TCEQ's water utilities database at <http://www3.tceq.state.tx.us/iwud/uti/>



Data Source(s): SH130-Dec.04  
 Lone Star Infrastructure, Major  
 Creeks - City of Austin, Railroad-  
 City of Austin downloaded Jan.  
 2005. Parks/Preserves - from  
 various sources, CoA and Travis.  
 CCN boundaries - TCEQ 2006.

# Water Certificates of Convenience and Necessity (CCN) in Eastern Travis County



Map Prepared by:  
 Travis County,  
 Department of  
 Transportation &  
 Natural Resources  
 May 12, 2006  
[www.co.travis.tx.us/maps](http://www.co.travis.tx.us/maps)