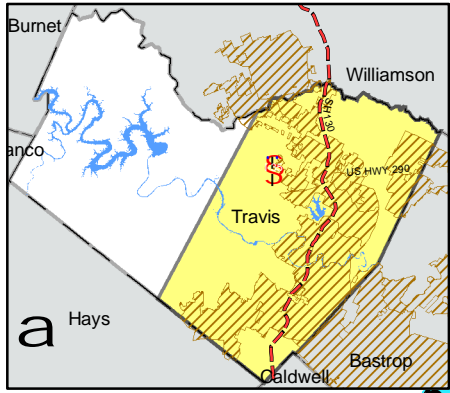


Area of Enlargement

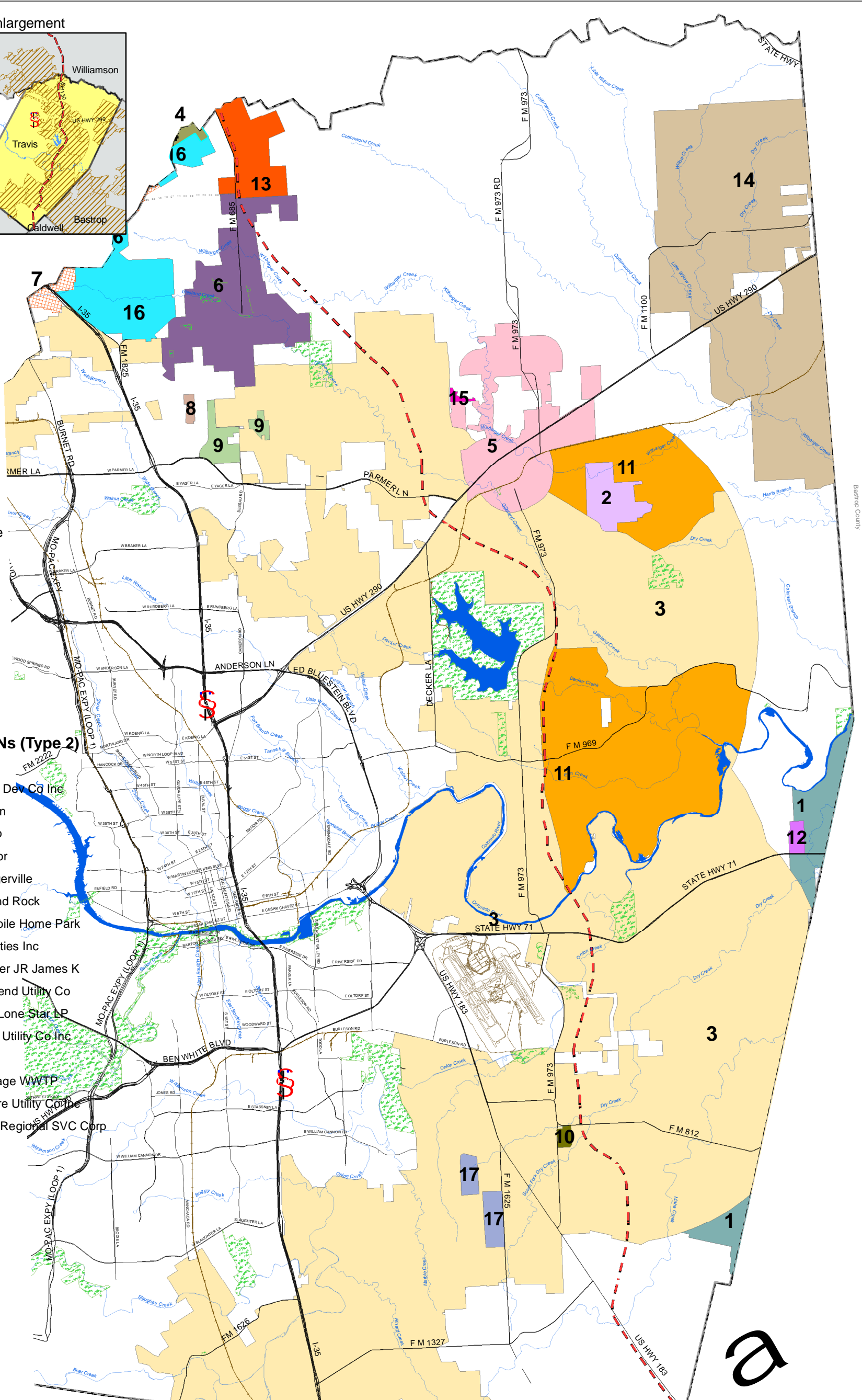


Legend

- Major Road
- SH 130
- Railroad
- Park/Preserve
- Water Body
- Creek

Wastewater CCNs (Type 2)

- 1, Aqua WSC
- 2, Aquasource Dev Co Inc
- 3, City of Austin
- 4, City of Hutto
- 5, City of Manor
- 6, City of Pflugerville
- 7, City of Round Rock
- 8, Dessau Mobile Home Park
- 9, Dessau Utilities Inc
- 10, Eichelberger JR James K
- 11, Hornsby Bend Utility Co
- 12, KB Home Lone Star LP
- 13, Kelly Lane Utility Co Inc
- 14, LCRA
- 15, Manor Village WWTP
- 16, Windermere Utility Corp
- 17, Southland Regional SVC Corp



Map Disclaimer: Map provided "as-is" with no warranties of any kind. CCN data provided by TCEQ via e-mail on January 13, 2006. Type 2 CCN indicates a sewer (wastewater) service area, thus "Type 2" areas selected for map display. Refer to the Water CCN Map for Type 1 CCN's. For more details, see TCEQ's on-line water utilities database at <http://www3.tceq.state.tx.us/iwud/util/>



Data Source(s): SH130-Dec.04
 Lone Star Infrastructure, Major Creeks - City of Austin, Railroad-City of Austin downloaded Jan. 2005. Parks/Preserves - from various sources, CoA and Travis.

Wastewater Certificates of Convenience and Necessity (CCN) in Eastern Travis County

Map Prepared by:
 Travis County,
 Department of
 Transportation &
 Natural Resources
 May 15, 2006
www.co.travis.tx.us/maps

