

# Municipal Jurisdictions in Travis County

## Legend

### Road

- State maintained
- Incorporated
- Travis County maintained
- Not maintained
- Private
- Rej. of dedication
- Undedicated, Private

### State Hwy 130

#### Status

- Complete
- - - - - In progress

- Creek
- Railroad
- Park or Preserve

### Barton Springs/ Edwards Aquifer

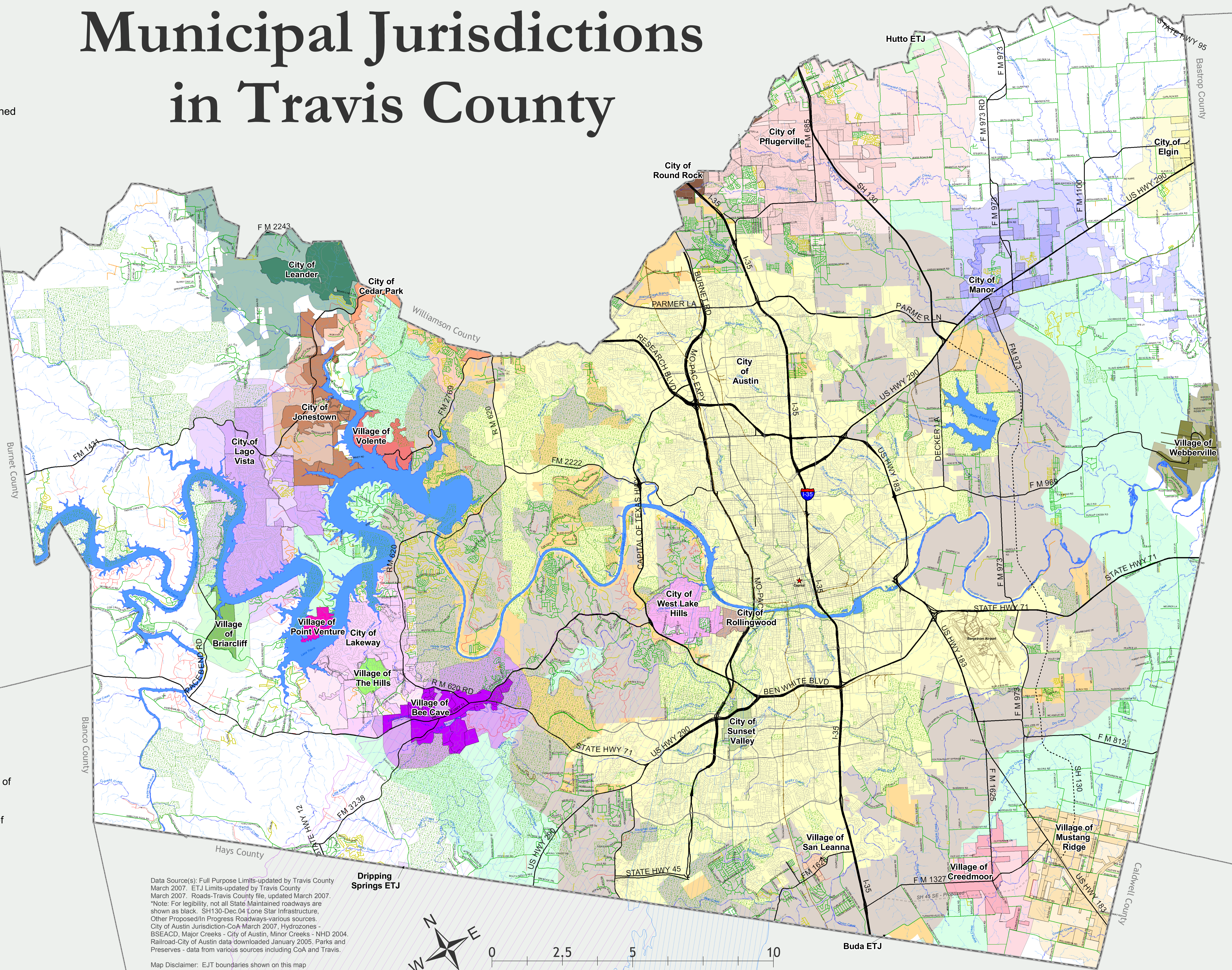
- Contributing Zone
- Recharge Zone

### City of Austin

- Full purpose
- 2 mile ETJ
- 5 mile ETJ
- Limited purpose

### City Limit & ETJ

- Bee Cave, City of
- Briarcliff, Village of
- Cedar Park, City of
- Creedmoor, Village of
- Elgin, City of
- Jonestown, City of
- Lago Vista, City of
- Lakeway, City of
- Leander, City of
- Manor, City of
- Mustang Ridge, Village of
- Pflugerville, City of
- Point Venture, Village of
- Rollingwood, City of
- Round Rock, City of
- San Leanna, Village of
- Sunset Valley, City of
- The Hills, Village of
- Volente, Village of
- Webberville, Village of
- West Lake Hills, City of



Data Source(s): Full Purpose Limits-updated by Travis County March 2007. ETJ Limits-updated by Travis County March 2007. Roads-Travis County file, updated March 2007. \*Note: For legibility, not all State Maintained roadways are shown as black. SH130-Dec.04 Lone Star Infrastructure, Other Proposed/In Progress Roadways-various sources. City of Austin Jurisdiction-CoA March 2007, Hydrozones - BSEACD, Major Creeks - City of Austin, Minor Creeks - NHD 2004, Railroad-City of Austin data downloaded January 2005, Parks and Preserves - data from various sources including CoA and Travis.

Map Disclaimer: EJT boundaries shown on this map may not be exact and should be verified by the municipality. This data is intended for general reference purposes only. The data is provided "as-is" with no warranties of any kind. For questions, contact the Travis County GIS Coordinator.

