

Computer-Assisted Auditing

Susan Combs, Texas Comptroller of Public Accounts

APRIL 2007

Audit and time efficiency are achieved when the auditor analyzes the taxpayer's computer files, evaluates populations of data, sets dollar ranges and randomly selects samples from those homogeneous ranges.

For more information, visit our Web site www.window.state.tx.us
Receive tax help via e-mail at tax.help@cpa.state.tx.us.

What is a Computer-Assisted Audit?

The Audit Division supports and maintains two programs used in conducting a computer-assisted audit. Using the CAMS (Computer Audit Menu System) programs, the auditor creates homogenous groups of data and samples transactions based on dollar value strata. This results in a more representative sample for the taxpayer and the auditor.

CAMS-Mainframe

Uses Easytrieve to process large numbers of records from tapes or PC-based media. The computer audit specialist in Audit Headquarters processes the files, runs reports and converts the files to the CAMS standard format. The auditor then runs reports, defines the population, sets stratification layers and selects samples.

CAMS-PC

Uses Visual Basic and TrueDB Reports to process smaller numbers of records from imported data. The auditor runs all reports, defines the population, sets stratification layers and selects samples.

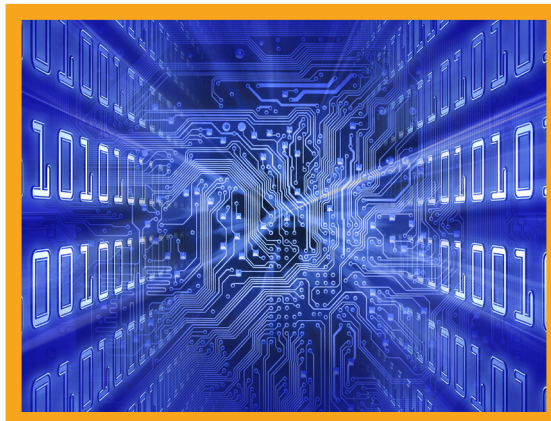
Files

Computer files commonly requested include (but are not limited to):

- General Ledger detail files
- Purchase detail files
- Sales Invoice detail files
- Vendor/Customer master files

Data Formats

- Detailed sequential transaction file
- Mainframe-based data: IBM-readable format—EBCDIC or ASCII
- Delimited files—'pipe' delimited, comma delimited, etc.
- .csv, .txt, .mdb files
- Report files
- Quickbooks and Peachtree generated files



Media Requirements

- Mainframe-based media: 3480, 3490, 3490e, 9840 tape cartridges—max. block size 32760. RISC6000, 8 mm, 4 mm tapes—data is copied by an outside vendor to compatible media
- PC-based data: ZIP disks—250 MB, 100 MB; CDs; diskettes



Computer-Assisted Auditing

Documentation Requirements

- Record layout, file layout
- Dump or printout of 10 records
- Data Information Form—supplied by the auditor, completed by the taxpayer
- Explain the files provided—DCB information, tape volumes, program used to create the files, etc.

Computer Data is Considered Books and Records

The Comptroller's Legal Counsel has interpreted the books and records provision of the Tax Code (Vernon's TEXAS CODES ANN., Tax Code, Sec. 111.004) to include computer records.

Confidentiality

The Comptroller of Public Accounts and its employees are prohibited from disclosing any information derived in the course of an audit pursuant to the provisions of TEX. TAX CODE ANN.111.006. Each employee of this agency is required to sign a statement in which the employee acknowledges that he or she has been informed of the contents of the above-cited statutes. The employee agrees not to disclose such information. If an employee does disclose information made confidential by law, the employee is subject to penalties including a fine and prison term.

We're Here To Help! *Call Toll-Free!*

If you have questions or need information on a specific tax, please call our toll-free numbers:

(800) 252-5555

911 Emergency Service/Equalization Surcharge
Automotive Oil Fee
Battery Fee
Boat and Boat Motor Sales Tax
Customs Broker
Fireworks Tax
Mixed Beverage Tax
Off-Road, Heavy-Duty Diesel Equipment Surcharge
Oyster Fee
Sales and Use Taxes
Telecommunications Infrastructure Fund

(800) 531-5441

Cement Tax
Inheritance Tax
Local Revenue
Miscellaneous Gross Receipts Taxes
Oil Well Servicing Tax
Sulphur Tax

(800) 531-5441 ext. 3-3630

WebFile Help

(800) 252-1381

Bank Franchise
Franchise Tax

(800) 252-7875

Spanish

(800) 531-1441

Fax on Demand (Most frequently requested Sales and Franchise tax forms)

(800) 252-1382

Clean Vehicle Incentive Program
Manufactured Housing Tax
Motor Vehicle Sales Surcharge,
Rental and Seller Financed Sales Tax
Motor Vehicle Registration Surcharge

(800) 252-1383

Fuels Tax
IFTA
LG Decals
Petroleum Products Delivery Fee
School Fund Benefit Fee

(800) 252-1384

Coastal Protection
Crude Oil Production Tax
Natural Gas Production Tax

(800) 252-1387

Insurance Tax

(800) 252-1385

Coin Operated Machine Tax
Hotel Occupancy Tax

(800) 252-1386

Certificates of Account Status/Good Standing
Officer and Director Information

(800) 862-2260

Cigarette and Tobacco

(888) 4-FILING ((888) 434-5464)

TELEFILE: To File by Phone

(800) 252-1389

GETPUB: To Order Forms and Publications

(800) 654-FIND ((800) 654-3463)

Treasury Find

(800) 321-2274

Unclaimed Property Claimants
Unclaimed Property Holders
Unclaimed Property Name Searches
512/463-3120 (Austin)

(877) 44RATE4 ((877) 447-2834)

Interest Rate

Texas Comptroller of Public Accounts

Publication #96-334

Revised April 2007

For additional copies write:

Texas Comptroller of Public Accounts
111 E. 17th Street
Austin, Texas 78711-1440

For more information, visit our Web site

www.window.state.tx.us

Receive tax help via e-mail at

tax.help@cpa.state.tx.us

The Texas Comptroller of Public Accounts is an equal opportunity employer and does not discriminate on the basis of race, color, religion, sex, national origin, age or disability in employment or in the provision of any services, programs or activities.

In compliance with the Americans with Disabilities Act, this document may be requested in alternative formats by calling the appropriate toll-free number listed at left, or by calling:

(512) 463-4600 in Austin
(512) 475-0900 (FAX).