

2008 Annual Report

Texas Department of Insurance



Texas Department of Insurance

Office of the Commissioner, Mail Code 113-1C
333 Guadalupe • P.O. Box 149221, Austin, Texas 78714-9221
512 463-6464 telephone • 512 475-2005 fax • www.tdi.state.tx.us

November 20, 2008

The Honorable Rick Perry, *Governor*
The Honorable David Dewhurst, *Lieutenant Governor*
The Honorable Tom Craddick, *Speaker of the House*

Dear Governors and Speaker:

I am pleased to submit the Annual Report of the Texas Department of Insurance for Fiscal Year 2008, in compliance with Texas Insurance Code Chapter 32, Section 32.021.

Copies of this report will be filed simultaneously with the State Auditor, Legislative Budget Board, Comptroller of Public Accounts, Legislative Reference Library and State Library. Copies of this report will be provided to insurance commissioners in other states, as well as selected members of the Texas Legislature or upon request. This report is also available on TDI's Web site at <http://www.tdi.state.tx.us/reports/annual.html>.

As in 2007, TDI's Annual Financial Report—formerly published as Part V of the agency's Annual Report—is published under separate cover for Fiscal Year 2008.

If you have questions about the contents of this report or affairs of the Texas Department of Insurance, I will be happy to respond.

A handwritten signature in black ink that reads "Mike Geeslin".

Mike Geeslin, *Commissioner of Insurance*

A large, stylized white number '9' is positioned on the right side of the page, partially overlapping a white rectangular area. The number is composed of thick, rounded strokes. The white rectangular area is located in the upper right quadrant of the page.

133rd Annual Report

to the Governor & Legislature

**For Fiscal Year 2008
ending August 31, 2008**

Mike Geeslin,
Commissioner of Insurance

TABLE OF CONTENTS

Agency Vision	v
Agency Mission	v
Agency Regulatory Approach	v
Agency Organization Chart	vi

Part I Report on Program Activities

Preface	3
Commissioner's Office	5
Highlights	6
Fig. 1 Summary of Activity: Commissioner's Office	9
Fig. 2 Commissioner's Contested Cases by Type	10
Fig. 3 Summary of Activity: Workers' Compensation Research Group	10
Legal Services	11
Highlights	11
Fig. 4 Summary of Activity	12
Enforcement	13
Highlights	13
Fig. 5 Summary of Activity	15
Insurance Fraud Unit	16
Fraud Unit History	17
Highlights	17
Fig. 6 Summary of Activity	18
Financial	19
Highlights	20
Fig. 7 Number of Company Licenses Under Commissioner's Jurisdiction FYs 04-08	21
Fig. 8 Texas Policyholder Premiums, Claim Payments CYs 03-07	21
Fig. 9 Total Capital/Surplus of Insurance Companies Operating in Texas CYs 03-07	22
Fig. 10 Number of Financial Analysis Reviews FYs 04-08	22
Fig. 11 Number of Holding Company Transactions Processed, FYs 04-08	22
Fig. 12 Number of Financial and Market Conduct Examinations FYs 04-08	22

Fig. 13 Number of Actuarial Examinations Performed FYs 04-08	22
Fig. 14 Texas Guaranty Association Assessments CYs 03-07	22
Property and Casualty	23
Highlights	24
Fig. 15 Rate and Form Filings Completed	25
Fig. 16 Summary of Complaints Closed	25
Fig. 17 Summary of Title Insurance Activity	26
Fig. 18 Number of Agents/Licenses Under Commissioner's Jurisdiction (Title) ...	26
Fig. 19 Summary of Activity: Commercial Property Oversight Inspections	26
Fig. 20 Summary of Activity: Windstorm Operations	26
Fig. 21 Summary of Activity: Engineering Services	26
Fig. 22 Summary of Activity: Loss Control	26
Fig. 23 Summary of Activity: Amusement Ride Safety and Insurance Act	27
Fig. 24 Summary of Activity: Workers' Compensation Classification/ Premium Calculation Division (formerly the Workers' Compensation Division)	27
Fig. 25 Other Statistical Reports Collected	27
Life, Health and Licensing Program	28
Highlights	33
Fig. 26 Summary of Activity: Filing & Operations Division Filings Received/ Processed	36
Fig. 27 Number of Licenses, Certificates and Registrations under Commissioner's Jurisdiction	37
Fig. 28 Summary of Activity: Licensing Division	37
Fig. 29 Summary of Agents License Statistics	37
Fig. 30 Numbers and Types of Agents Licenses	38
Fig. 31 Summary of Activity: Life/Health Filings	36

Life, Health, Licensing Program *(continued)*

Fig. 32 Summary of Activity: Health Maintenance Organization Filings . . . 38

Fig. 33 Summary of Activity: Utilization Review Filings 38

Fig. 34 Summary of Activity: Number of Complaints Against HMOs Resolved . 38

Fig. 35 Number of HMO Quality Assurance Examinations Conducted 38

Fig. 36 Summary of Activity: HWCN Inquiries 38

Fig. 37 Summary of Activity: IRO Applications 38

Consumer Protection 39

Highlights 39

Fig. 38 Total Number of Complaint Cases Closed, FYs 04–08 41

Fig. 39 Additional Claim Payments to Consumers, FYs 04–08 41

Fig. 40 Restitutions/Refunds to Consumers, FYs 04–08 41

State Fire Marshal’s Office 42

Highlights 43

Fig. 41 Summary of Activity: Fire Marshal’s Office 44

Administrative Operations 45

Highlights 46

Fig. 42 Comparison of Maintenance Tax Rates, FYs 01-08 48

Division of Workers’ Compensation 49

Highlights 52

Division Workers’ Compensation Organization Chart 60

**Part II
Report on Certificates of Authority 61**

10-Year History, Certificate of Authority 63

Reconciliation 63

Types and Totals of Entities Licensed in Texas 63

Types and Totals of Entities Holding a Certificate of Authority in Texas 64

New Companies Organized/Admitted to Texas 64

Canceled Certificate of Authority Report
Companies Reinsured, Merged, Dissolved,
Withdrawn, Redomesticated,
Domesticated or Placed in Receivership . . . 65

**Part III
Rehabilitations and Liquidation Oversight Report 67**

Rehabilitations and Liquidation Oversight Report 69

Companies Under Supervision, Conservation, 404 Orders and Administration Oversight 69

Receiverships by Fiscal Year FYs 04-08 . . 69

Open Receiverships at Year-end FY 08 . . . 69

**Part IV
Summary of Information from
Annual Statements 71**

Top 40 Insurers: Homeowners 73
 Top 40 Insurers: Private Passenger Auto 74
 Top 40 Insurers: Workers' Compensation ... 75
 Top 40 Insurers: Accident and Health 76
 Top 40 Health Maintenance Organization:
 Accident and Health 77
 Top 40 Insurers: Life 78
 Top 40 Insurers: Annuities 79
Texas Premium Summaries 80
 Grand Total 2006-2007 80
 Property and Casualty 2006-2007 80
 Life, Accident & Health and Annuity
 2006-2007 80
 Legal Reserve Life Insurance Companies,
 All Companies Combined 81
 Legal Reserve Life Insurance Companies,
 Texas Business Only 81
 Stipulated Premium Companies,
 all Companies Combined 81
 Fraternal Benefit Societies,
 all Societies Combined 82
 Statewide Mutual Assessment
 Companies, Local Mutual Aid
 Associations and Burial Associations,
 all Companies Combined 82
 Exempt Associations,
 All Associations Combined 83

Non-Profit Group Hospital Service,
 All Associations Combined 83
 Health Maintenance Organizations 83
 Non-Profit Legal Services Corporations .. 83
 Stock Fire, Stock Casualty, and Stock
 Fire and Casualty Insurance Companies,
 All Companies Combined 84
 Mutual Fire and Casualty Companies,
 All Companies Combined 85
 Lloyds for Calendar Year 2007 86
 Reciprocal Exchanges,
 All Companies Combined 87
 County Mutual Fire Insurance Companies,
 All Companies Combined 88
 Farm Mutual Insurance Companies 88
 Domestic Risk Retention Groups 88
 Title Companies 89

Agency Vision

The Texas Department of Insurance envisions a financially stable and fair marketplace and an effective and efficient workers' compensation system.

Agency Mission

The Texas Department of Insurance mission is to protect insurance consumers by:

- regulating the insurance industry fairly and diligently
- promoting a stable and competitive market
- providing information that makes a difference.

Agency Regulatory Approach

The Texas Department of Insurance will exemplify friendly, courteous, ethical, and professional behavior in all areas of performance by:

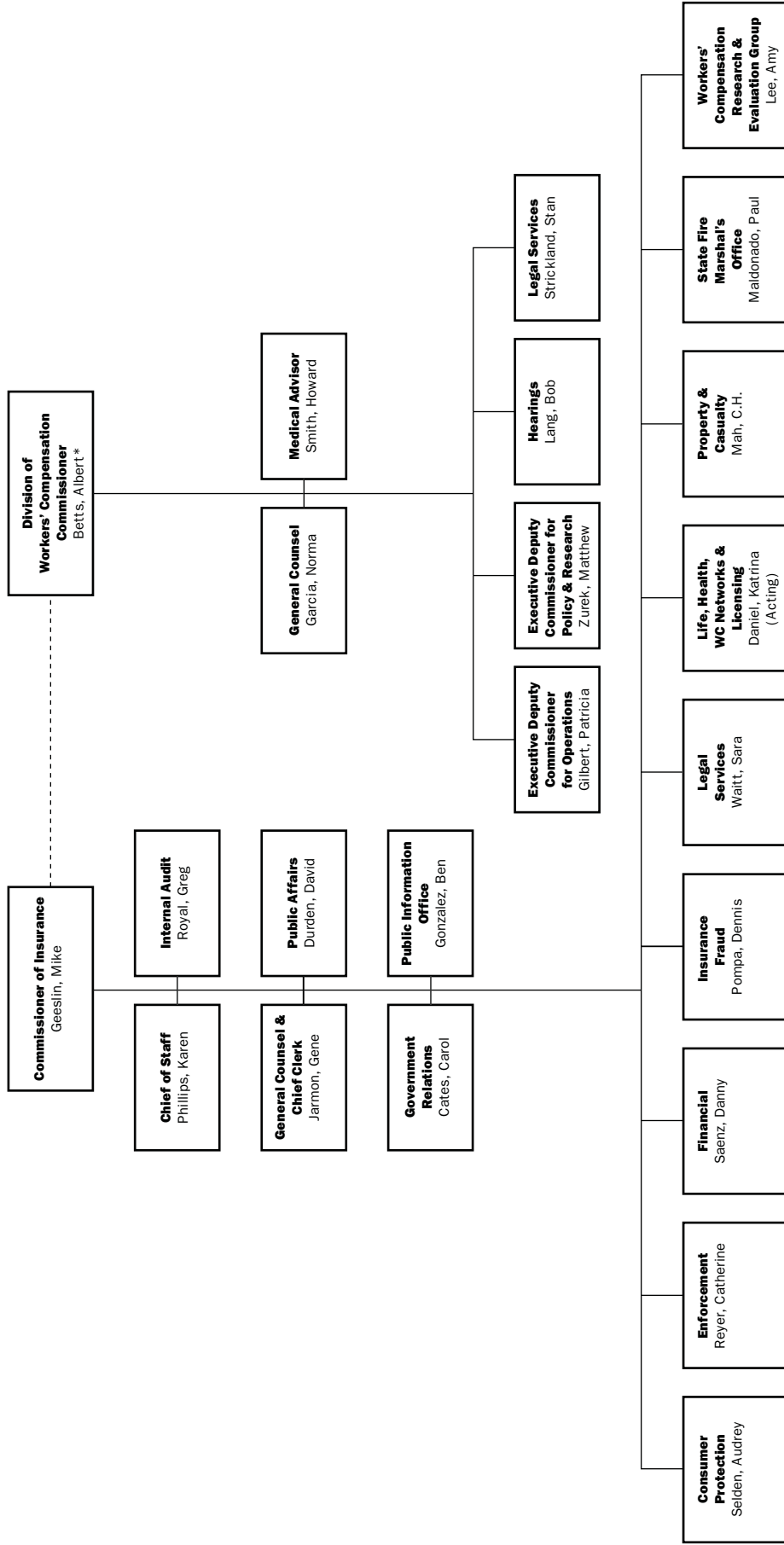
- providing the best value in services to the people of Texas
- applying the law and the agency policy fairly and consistently throughout the state
- communicating openly and providing timely and accurate information to the public we serve, and to all our fellow employees, and
- communicating internally and externally, we evaluate and adjust the course of the agency in response to changes in conditions.

Explanatory Note

References to statutes and insurance-related legislation: Unless otherwise noted, statutory references, including citations of articles, refer to the *Texas Insurance Code*. SB refers to a Senate bill and HB refers to a House bill. Bill references are to those enacted by the 80th Texas Legislature (2007) unless otherwise indicated.

Agency Organization Chart

August 31, 2008



* Albert Betts announced his resignation in June 2008. Governor Perry appointed Rod Bordelon as Commissioner of Workers' Compensation effective September 1, 2008.