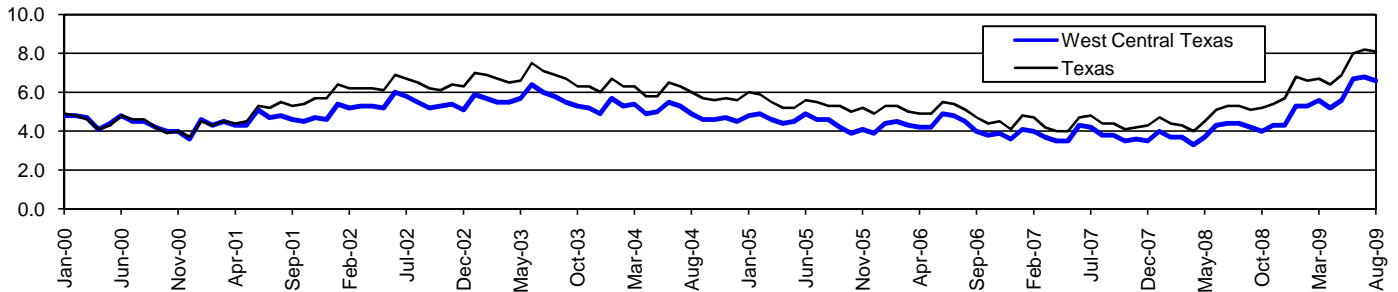


West Central Texas Workforce Development Area*

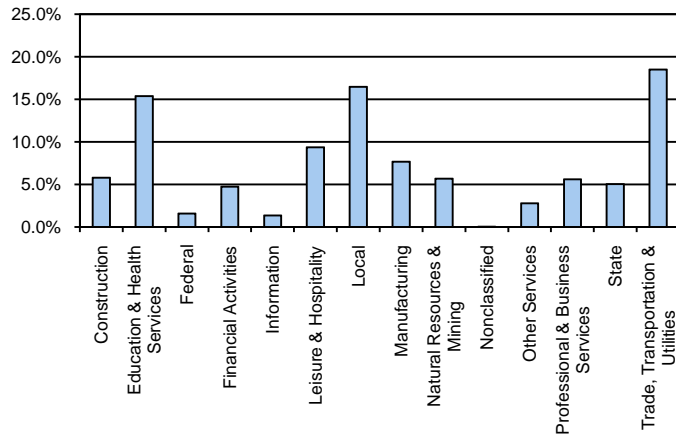
August 2009

West Central Texas WDA					Texas				
	CLF	Employed	Unemployed	Rate		CLF	Employed	Unemployed	Rate
Aug-09	166,122	155,174	10,948	6.6	Aug-09	12,061,355	11,079,403	981,952	8.1
Jul-09	167,071	155,644	11,427	6.8	Jul-09	12,136,607	11,138,224	998,383	8.2
Aug-08	160,523	153,532	6,991	4.4	Aug-08	11,750,624	11,129,768	620,856	5.3

Historical Unemployment Rates



West Central Texas WDA Industry Composition
1st Quarter 2009



Total WDA Claims

	Aug-09	Jul-09	Aug-08	OTY
Initial	788	1,035	412	376
Continued	5,734	6,157	1,952	3,782
Continued Claims for the Week of the 12th				
Continued	2,113	2,448	664	1,449

Texas Unemployment Insurance Claims Filed

	Aug-09	Jul-09	Aug-08	OTY
Initial	98,444	112,737	68,139	30,305
Continued	1,404,113	1,340,360	543,681	860,432
Continued Claims for the Week of the 12th				
Continued	295,488	313,137	125,839	169,649

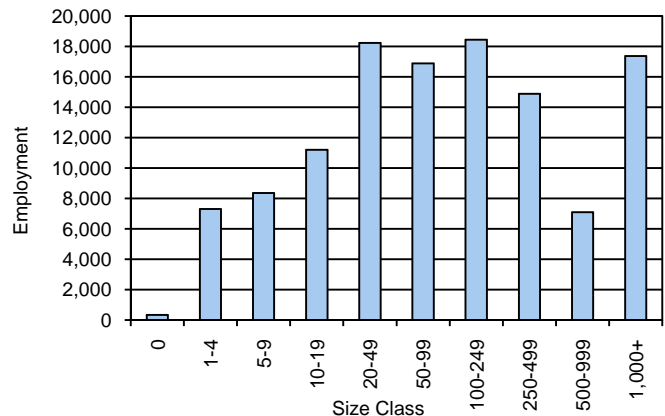
West Central Texas WDA
Average Weekly Wage

	West Central Tx	WDA Qtr. Chg.	Texas
1st Quarter 2009	\$598.28	-\$60.70	\$884.74
4th Quarter 2008	\$658.98	WDA OTY Chg.	\$932.81
1st Quarter 2008	\$594.61	\$3.67	\$903.44

NAICS Covered Employment Quarterly Data
1st Quarter 2009

SUPER SECTOR	Employment	Change	
		Quarter	Year
Construction	6,947	-700	166
Education & Health Services	18,467	-75	601
Federal	1,911	-27	-39
Financial Activities	5,709	-7	21
Information	1,634	-9	-118
Leisure & Hospitality	11,237	-90	407
Local	19,780	38	162
Manufacturing	9,225	-474	-871
Natural Resources & Mining	6,832	-1,222	-640
Nonclassified	44	14	15
Other Services	3,318	-125	-91
Professional & Business Services	6,714	-232	147
State	6,061	28	49
Trade, Transportation & Utilities	22,224	-735	-413
TOTAL	120,103	-3,616	-604

Size Class Employment Composition
1st Quarter 2009



*Counties in WDA: Brown, Callahan, Coleman, Comanche, Eastland, Fisher, Haskell, Jones, Kent, Knox, Mitchell, Nolan, Runnels, Scurry, Shackelford, Stephens, Stonewall, Taylor, & Throckmorton