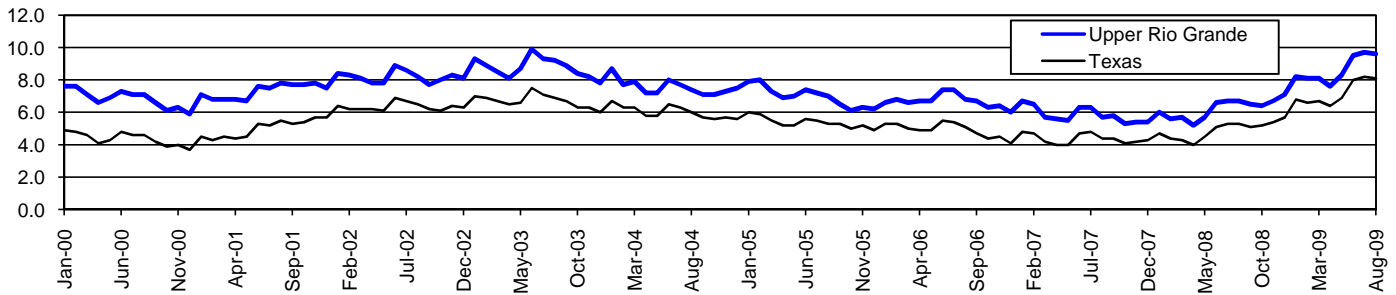


Upper Rio Grande Workforce Development Area*

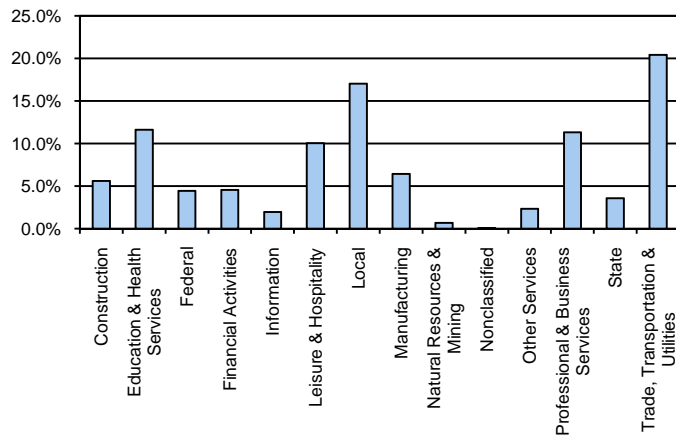
August 2009

Upper Rio Grande WDA					Texas				
	CLF	Employed	Unemployed	Rate		CLF	Employed	Unemployed	Rate
Aug-09	319,994	289,319	30,675	9.6	Aug-09	12,061,355	11,079,403	981,952	8.1
Jul-09	323,135	291,894	31,241	9.7	Jul-09	12,136,607	11,138,224	998,383	8.2
Aug-08	309,463	288,686	20,777	6.7	Aug-08	11,750,624	11,129,768	620,856	5.3

Historical Unemployment Rates



Upper Rio Grande WDA Industry Composition 1st Quarter 2009



Total WDA Claims

	Aug-09	Jul-09	Aug-08	OTY
Initial	2,673	2,990	2,058	615
Continued	21,476	22,785	11,268	10,208
Continued Claims for the Week of the 12th				
Continued	6,426	7,102	3,554	2,872

Texas Unemployment Insurance Claims Filed

	Aug-09	Jul-09	Aug-08	OTY
Initial	98,444	112,737	68,139	30,305
Continued	1,404,113	1,340,360	543,681	860,432
Continued Claims for the Week of the 12th				
Continued	295,488	313,137	125,839	169,649

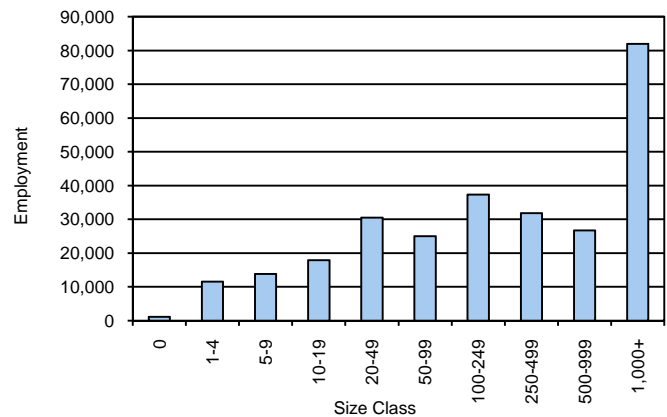
Upper Rio Grande WDA Average Weekly Wage

	Upper Rio Grande	WDA Qtr. Chg.	Texas
1st Quarter 2009		\$601.04	-\$41.26
4th Quarter 2008		\$642.30	WDA OTY Chg. \$932.81
1st Quarter 2008		\$599.66	\$1.38
			\$903.44

NAICS Covered Employment Quarterly Data 1st Quarter 2009

SUPER SECTOR	Employment	Change	
		Quarter	Year
Construction	15,550	-257	102
Education & Health Services	32,273	225	1,074
Federal	12,283	336	914
Financial Activities	12,663	341	441
Information	5,443	-75	-379
Leisure & Hospitality	27,838	-747	-541
Local	47,321	306	720
Manufacturing	17,889	-1,171	-2,229
Natural Resources & Mining	1,849	-313	-257
Nonclassified	206	74	38
Other Services	6,458	-299	-264
Professional & Business Services	31,391	43	146
State	9,890	-88	469
Trade, Transportation & Utilities	56,659	-3,828	-3,819
TOTAL	277,713	-5,453	-3,585

Size Class Employment Composition 1st Quarter 2009



*Counties in WDA: Brewster, Culberson, El Paso, Hudspeth, Jeff Davis, & Presidio