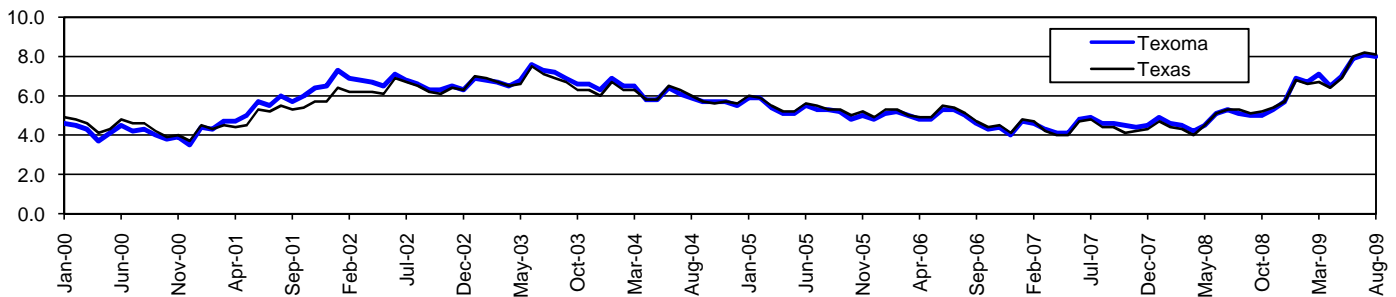


Texoma Workforce Development Area*

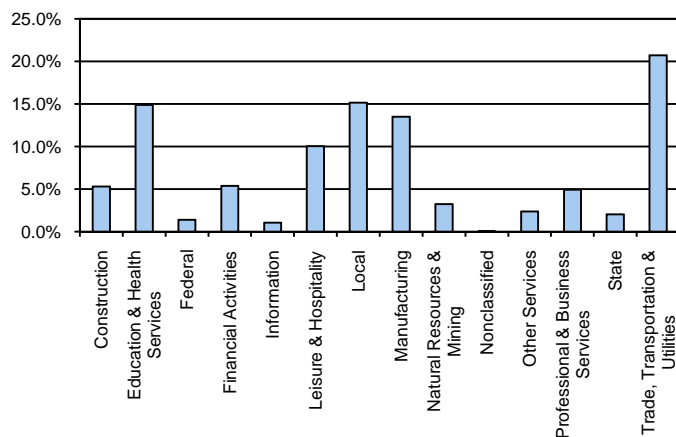
August 2009

Texoma WDA					Texas				
	CLF	Employed	Unemployed	Rate		CLF	Employed	Unemployed	Rate
Aug-09	96,352	88,636	7,716	8.0	Aug-09	12,061,355	11,079,403	981,952	8.1
Jul-09	96,798	88,964	7,834	8.1	Jul-09	12,136,607	11,138,224	998,383	8.2
Aug-08	92,572	87,806	4,766	5.1	Aug-08	11,750,624	11,129,768	620,856	5.3

Historical Unemployment Rates



Texoma WDA Industry Composition 1st Quarter 2009



Total WDA Claims

	Aug-09	Jul-09	Aug-08	OTY
Initial	657	735	396	261
Continued	3,968	4,044	1,739	2,229
Continued Claims for the Week of the 12th				
Continued	1,752	1,871	663	1,089

Texas Unemployment Insurance Claims Filed

	Aug-09	Jul-09	Aug-08	OTY
Initial	98,444	112,737	68,139	30,305
Continued	1,404,113	1,340,360	543,681	860,432
Continued Claims for the Week of the 12th				
Continued	295,488	313,137	125,839	169,649

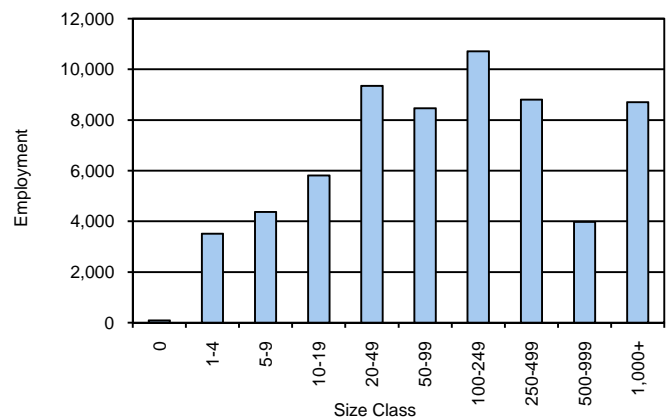
Texoma WDA Average Weekly Wage

	Texoma	WDA Qtr. Chg.	Texas
1st Quarter 2009	\$684.17	-\$48.03	\$884.74
4th Quarter 2008	\$732.20	OTY Change	\$932.81
1st Quarter 2008	\$690.74	-\$6.57	\$903.44

NAICS Covered Employment Quarterly Data 1st Quarter 2009

SUPER SECTOR	Employment	Change	
		Quarter	Year
Construction	3,384	-426	-491
Education & Health Services	9,490	-335	190
Federal	893	-5	39
Financial Activities	3,421	-170	-177
Information	679	-40	-55
Leisure & Hospitality	6,392	48	235
Local	9,659	268	328
Manufacturing	8,618	-493	-745
Natural Resources & Mining	2,073	-325	-229
Nonclassified	31	11	26
Other Services	1,504	-30	-161
Professional & Business Services	3,135	-223	-202
State	1,285	38	58
Trade, Transportation & Utilities	13,223	-422	-250
TOTAL	63,787	-2,104	-1,434

Size Class Employment Composition 1st Quarter 2009



*Counties in WDA: Cooke, Fannin, & Grayson

Available at <http://www.tracer2.com/>