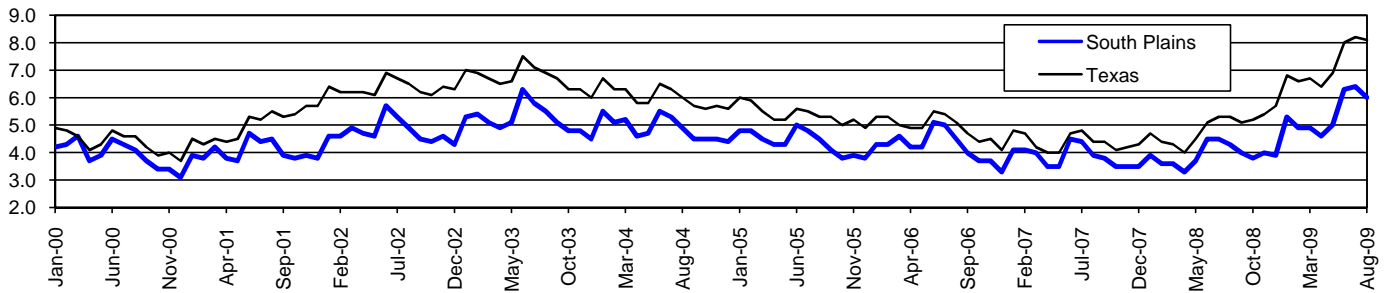


South Plains Workforce Development Area*

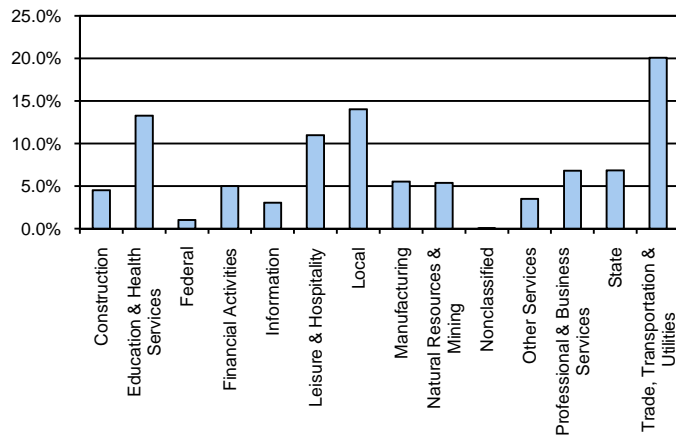
August 2009

South Plains WDA					Texas				
	CLF	Employed	Unemployed	Rate		CLF	Employed	Unemployed	Rate
Aug-09	208,581	196,081	12,500	6.0	Aug-09	12,061,355	11,079,403	981,952	8.1
Jul-09	209,599	196,196	13,403	6.4	Jul-09	12,136,607	11,138,224	998,383	8.2
Aug-08	202,450	193,810	8,640	4.3	Aug-08	11,750,624	11,129,768	620,856	5.3

Historical Unemployment Rates



South Plains WDA Industry Composition 1st Quarter 2009



Total WDA Claims

	Aug-09	Jul-09	Aug-08	OTY
Initial	1,262	1,045	516	746
Continued	7,660	8,791	3,959	3,701
Continued Claims for the Week of the 12th				
Continued	2,172	2,756	836	1,336

Texas Unemployment Insurance Claims Filed

	Aug-09	Jul-09	Aug-08	OTY
Initial	98,444	112,737	68,139	30,305
Continued	1,404,113	1,340,360	543,681	860,432
Continued Claims for the Week of the 12th				
Continued	295,488	313,137	125,839	169,649

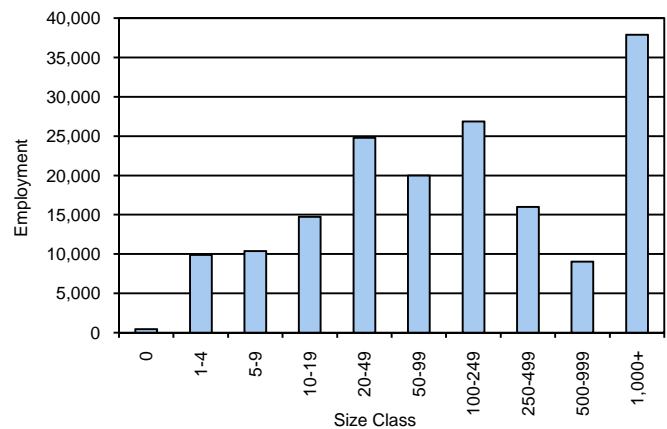
South Plains WDA Average Weekly Wage

	South Plains	WDA Qtr. Chg.	Texas
1st Quarter 2009	\$621.38	-\$73.43	\$884.74
4th Quarter 2008	\$694.81	WDA OTY Chg.	\$932.81
1st Quarter 2008	\$623.21	-\$1.83	\$903.44

NAICS Covered Employment Quarterly Data 1st Quarter 2009

SUPER SECTOR	Employment	Change	
		Quarter	Year
Construction	7,660	101	225
Education & Health Services	22,531	-96	947
Federal	1,717	-84	-76
Financial Activities	8,466	-125	-9
Information	5,199	-352	-579
Leisure & Hospitality	18,625	-432	580
Local	23,856	1,130	1,481
Manufacturing	9,381	-70	56
Natural Resources & Mining	9,152	-2,000	-706
Nonclassified	67	7	-9
Other Services	5,940	4	188
Professional & Business Services	11,569	-698	-566
State	11,631	-138	-148
Trade, Transportation & Utilities	34,126	-1,306	-211
TOTAL	169,920	-4,059	1,173

Size Class Employment Composition 1st Quarter 2009



*Counties in WDA: Bailey, Cochran, Crosby, Dickens, Floyd, Garza, Hale, Hockley, King, Lamb, Lubbock, Lynn, Motley, Terry, & Yoakum

Available at <http://www.tracer2.com/>