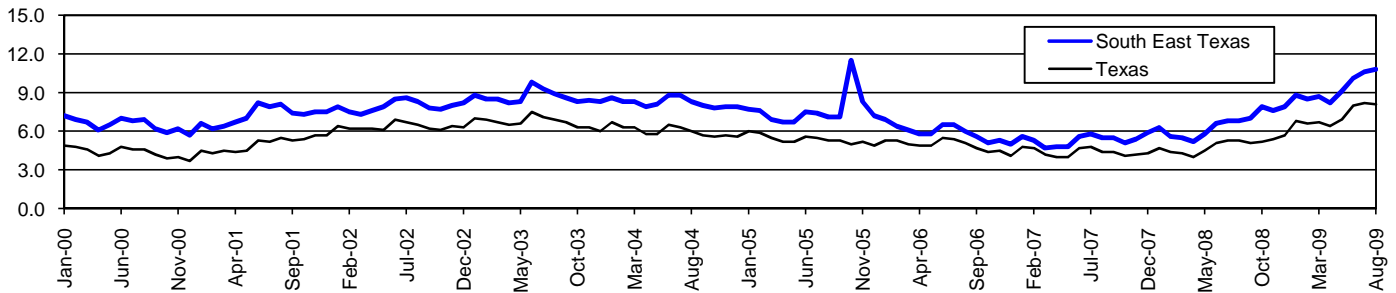


South East Texas Workforce Development Area*

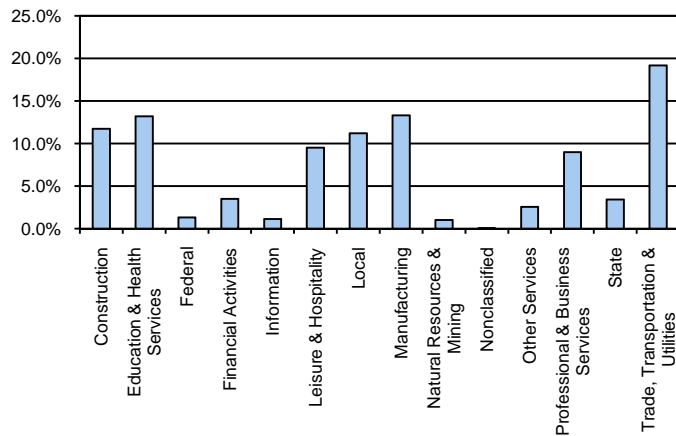
August 2009

South East Texas WDA					Texas				
	CLF	Employed	Unemployed	Rate		CLF	Employed	Unemployed	Rate
Aug-09	183,967	164,150	19,817	10.8	Aug-09	12,061,355	11,079,403	981,952	8.1
Jul-09	184,582	164,946	19,636	10.6	Jul-09	12,136,607	11,138,224	998,383	8.2
Aug-08	182,835	170,387	12,448	6.8	Aug-08	11,750,624	11,129,768	620,856	5.3

Historical Unemployment Rates



South East Texas WDA Industry Composition 1st Quarter 2009



Total WDA Claims

	Aug-09	Jul-09	Aug-08	OTY
Initial	2,406	2,757	1,610	796
Continued	16,144	15,589	9,118	7,026
Continued Claims for the Week of the 12th				
Continued	5,105	5,281	2,739	2,366

Texas Unemployment Insurance Claims Filed

	Aug-09	Jul-09	Aug-08	OTY
Initial	98,444	112,737	68,139	30,305
Continued	1,404,113	1,340,360	543,681	860,432
Continued Claims for the Week of the 12th				
Continued	295,488	313,137	125,839	169,649

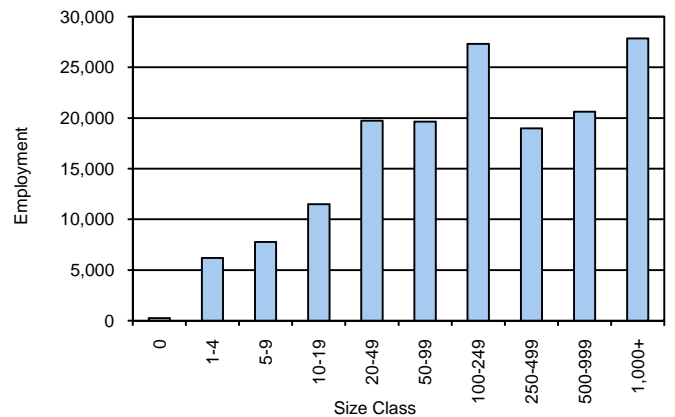
South East Texas WDA Average Weekly Wage

	South East Tx	WDA Qtr. Chg.	Texas
1st Quarter 2009	\$835.11	-\$73.24	\$884.74
4th Quarter 2008	\$908.35	WDA OTY Chg.	\$932.81
1st Quarter 2008	\$832.79	\$2.32	\$903.44

NAICS Covered Employment Quarterly Data 1st Quarter 2009

SUPER SECTOR	Employment	Change	
		Quarter	Year
Construction	18,738	-2,255	1,912
Education & Health Services	21,087	301	201
Federal	2,088	-18	-112
Financial Activities	5,585	-64	-129
Information	1,803	-115	-209
Leisure & Hospitality	15,219	760	976
Local	17,883	333	242
Manufacturing	21,285	-544	-1,490
Natural Resources & Mining	1,622	-97	-169
Nonclassified	42	31	2
Other Services	4,070	-44	-172
Professional & Business Services	14,356	-865	-830
State	5,451	41	166
Trade, Transportation & Utilities	30,614	-739	-254
TOTAL	159,843	-3,275	134

Size Class Employment Composition 1st Quarter 2009



*Counties in WDA: Hardin, Jefferson, & Orange

Available at <http://www.tracer2.com/>