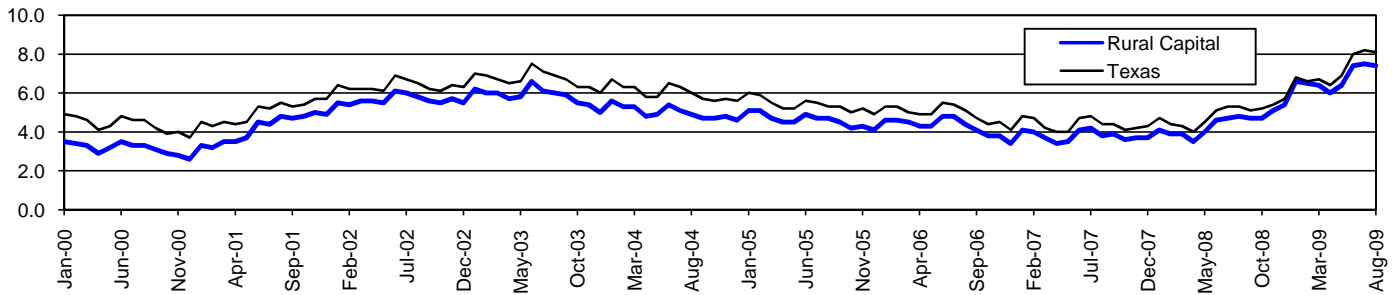


Rural Capital Workforce Development Area*

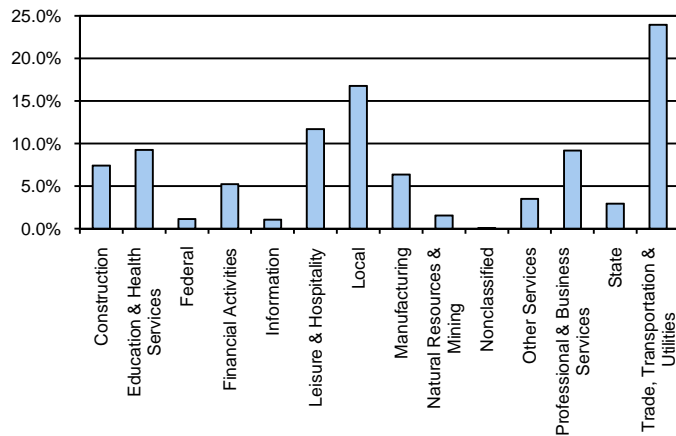
August 2009

Rural Capital WDA					Texas				
	CLF	Employed	Unemployed	Rate		CLF	Employed	Unemployed	Rate
Aug-09	395,358	366,088	29,270	7.4	Aug-09	12,061,355	11,079,403	981,952	8.1
Jul-09	397,050	367,093	29,957	7.5	Jul-09	12,136,607	11,138,224	998,383	8.2
Aug-08	382,115	363,765	18,350	4.8	Aug-08	11,750,624	11,129,768	620,856	5.3

Historical Unemployment Rates



Rural Capital WDA Industry Composition 1st Quarter 2009



Total WDA Claims

	Aug-09	Jul-09	Aug-08	OTY
Initial	2,301	2,693	1,622	679
Continued	10,636	11,158	6,560	4,076
Continued Claims for the Week of the 12th				
Continued	6,361	7,052	3,024	3,337

Texas Unemployment Insurance Claims Filed

	Aug-09	Jul-09	Aug-08	OTY
Initial	98,444	112,737	68,139	30,305
Continued	1,404,113	1,340,360	543,681	860,432
Continued Claims for the Week of the 12th				
Continued	295,488	313,137	125,839	169,649

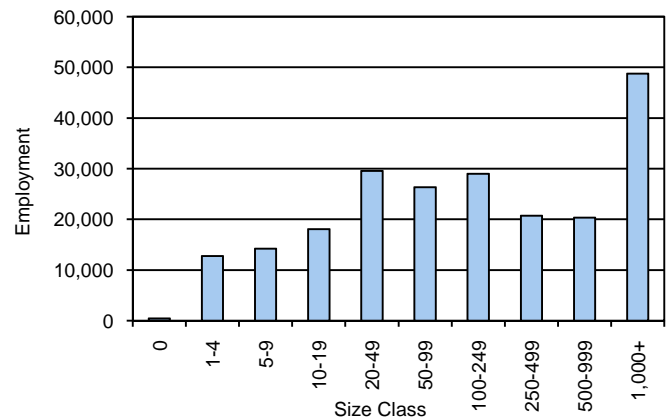
Rural Capital WDA Average Weekly Wage

	Rural Capital	WDA Qtr. Chg.	Texas
1st Quarter 2009	\$745.84	-\$45.47	\$884.74
4th Quarter 2008	\$791.31	WDA OTY Chg.	\$932.81
1st Quarter 2008	\$778.36	-\$32.52	\$903.44

NAICS Covered Employment Quarterly Data 1st Quarter 2009

SUPER SECTOR	Employment	Change	
		Quarter	Year
Construction	16,278	-1,090	-2,270
Education & Health Services	20,339	-100	430
Federal	2,448	-18	-57
Financial Activities	11,522	249	189
Information	2,321	-11	-50
Leisure & Hospitality	25,754	99	1,325
Local	36,924	471	1,655
Manufacturing	13,974	-1,065	-1,817
Natural Resources & Mining	3,393	-285	-354
Nonclassified	127	80	19
Other Services	7,728	17	263
Professional & Business Services	20,185	-622	402
State	6,435	583	770
Trade, Transportation & Utilities	52,764	-1,610	-467
TOTAL	220,192	-3,302	38

Size Class Employment Composition 1st Quarter 2009



*Counties in WDA: Bastrop, Blanco, Burnet, Caldwell, Fayette, Hays, Lee, Llano, & Williamson