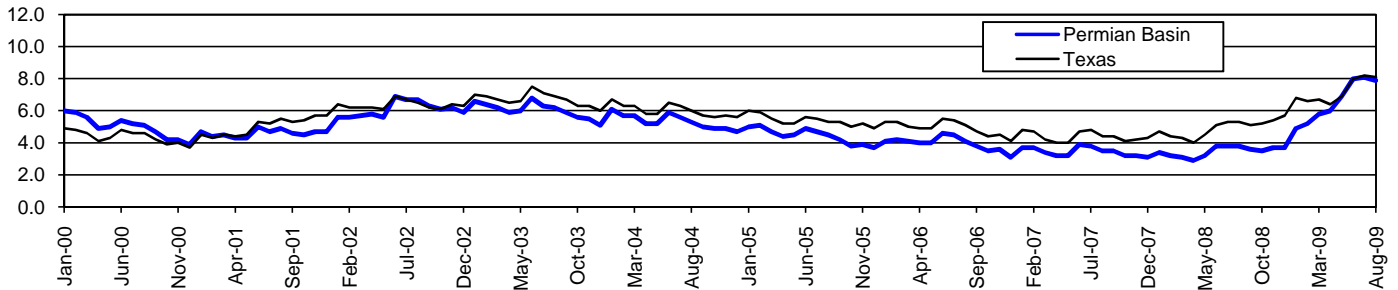


# Permian Basin Workforce Development Area\*

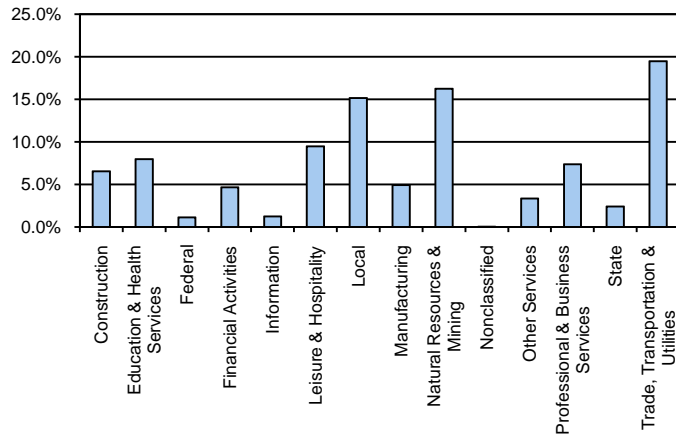
## August 2009

Permian Basin WDA					Texas				
	CLF	Employed	Unemployed	Rate		CLF	Employed	Unemployed	Rate
<b>Aug-09</b>	218,898	201,546	17,352	7.9	<b>Aug-09</b>	12,061,355	11,079,403	981,952	8.1
<b>Jul-09</b>	220,729	202,755	17,974	8.1	<b>Jul-09</b>	12,136,607	11,138,224	998,383	8.2
<b>Aug-08</b>	207,516	199,700	7,816	3.8	<b>Aug-08</b>	11,750,624	11,129,768	620,856	5.3

### Historical Unemployment Rates



### Permian Basin WDA Industry Composition 1st Quarter 2009



### Total WDA Claims

	Aug-09	Jul-09	Aug-08	OTY
<b>Initial</b>	1,444	1,746	448	<b>996</b>
<b>Continued</b>	13,841	14,944	1,909	<b>11,932</b>
<b>Continued Claims for the Week of the 12th</b>				
<b>Continued</b>	4,721	5,409	583	<b>4,138</b>

### Texas Unemployment Insurance Claims Filed

	Aug-09	Jul-09	Aug-08	OTY
<b>Initial</b>	98,444	112,737	68,139	<b>30,305</b>
<b>Continued</b>	1,404,113	1,340,360	543,681	<b>860,432</b>
<b>Continued Claims for the Week of the 12th</b>				
<b>Continued</b>	295,488	313,137	125,839	<b>169,649</b>

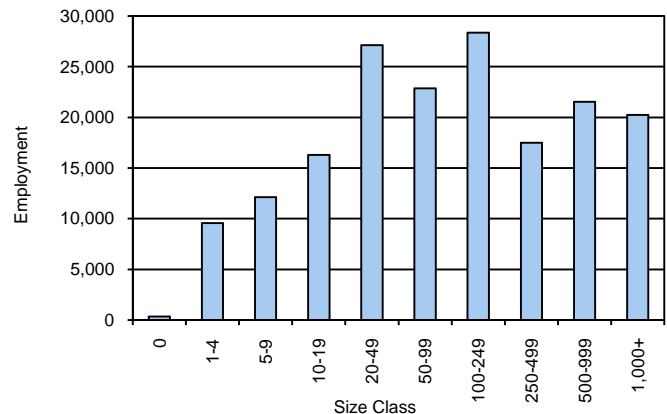
### Permian Basin WDA Average Weekly Wage

	Permian Basin	WDA Qtr. Chg.	Texas
<b>1st Quarter 2009</b>	\$829.04	-\$102.50	\$884.74
<b>4th Quarter 2008</b>	\$931.54	<b>WDA OTY Chg.</b>	\$932.81
<b>1st Quarter 2008</b>	\$829.75	-\$0.71	\$903.44

### NAICS Covered Employment Quarterly Data 1st Quarter 2009

SUPER SECTOR	Employment	Change	
		Quarter	Year
Construction	11,525	-1,086	-310
Education & Health Services	14,033	-265	-390
Federal	1,989	5	-13
Financial Activities	8,223	-145	325
Information	2,186	-59	-213
Leisure & Hospitality	16,643	28	946
Local	26,677	982	1,206
Manufacturing	8,678	-536	-387
Natural Resources & Mining	28,552	-2,065	489
Nonclassified	84	53	20
Other Services	5,908	-209	-46
Professional & Business Services	12,999	-1,013	-832
State	4,240	39	22
Trade, Transportation & Utilities	34,249	-1,560	337
<b>TOTAL</b>	<b>175,986</b>	<b>-5,831</b>	<b>1,154</b>

### Size Class Employment Composition 1st Quarter 2009



\*Counties in WDA: Andrews, Borden, Crane, Dawson, Ector, Gaines, Glasscock, Howard, Loving, Martin, Midland, Pecos, Reeves, Terrell, Upton, Ward, & Winkler