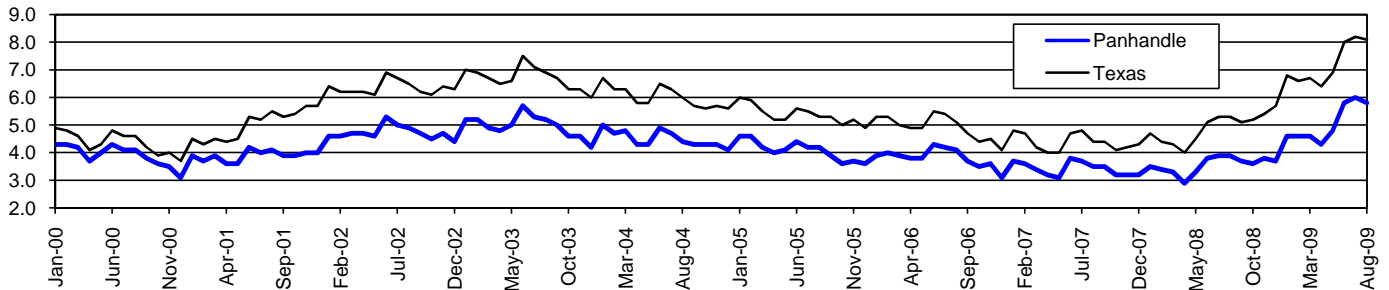


# Panhandle Workforce Development Area\*

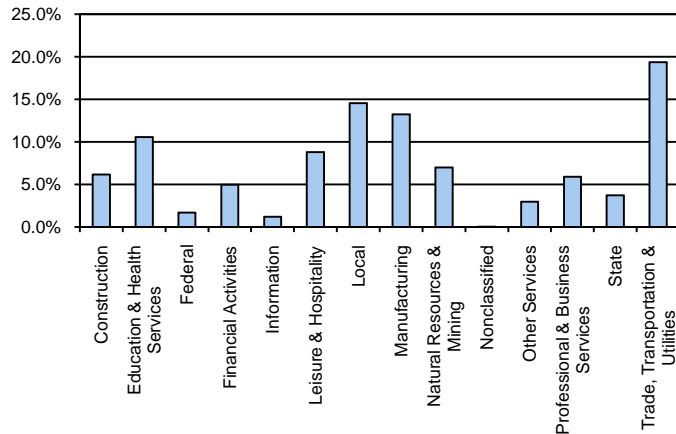
## August 2009

Panhandle WDA					Texas				
	CLF	Employed	Unemployed	Rate		CLF	Employed	Unemployed	Rate
<b>Aug-09</b>	226,416	213,305	13,111	5.8	<b>Aug-09</b>	12,061,355	11,079,403	981,952	8.1
<b>Jul-09</b>	227,027	213,508	13,519	6.0	<b>Jul-09</b>	12,136,607	11,138,224	998,383	8.2
<b>Aug-08</b>	219,319	210,870	8,449	3.9	<b>Aug-08</b>	11,750,624	11,129,768	620,856	5.3

### Historical Unemployment Rates



### Panhandle WDA Industry Composition 1st Quarter 2009



### Total WDA Claims

	Aug-09	Jul-09	Aug-08	OTY
<b>Initial</b>	1,034	1,108	556	<b>478</b>
<b>Continued</b>	6,371	6,348	2,401	<b>3,970</b>
<b>Continued Claims for the Week of the 12th</b>				
<b>Continued</b>	2,421	2,640	718	<b>1,703</b>

### Texas Unemployment Insurance Claims Filed

	Aug-09	Jul-09	Aug-08	OTY
<b>Initial</b>	98,444	112,737	68,139	<b>30,305</b>
<b>Continued</b>	1,404,113	1,340,360	543,681	<b>860,432</b>
<b>Continued Claims for the Week of the 12th</b>				
<b>Continued</b>	295,488	313,137	125,839	<b>169,649</b>

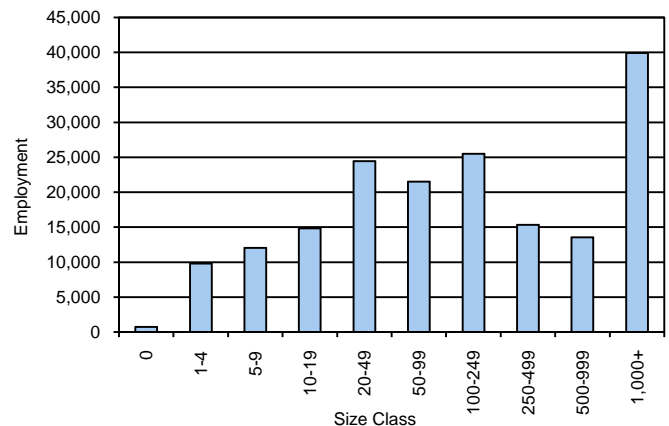
### Panhandle WDA Average Weekly Wage

	Panhandle	WDA Qtr. Chg.	Texas
<b>1st Quarter 2009</b>	\$698.34	-\$69.75	\$884.74
<b>4th Quarter 2008</b>	\$768.09	<b>WDA OTY Chg.</b>	\$932.81
<b>1st Quarter 2008</b>	\$723.68	-\$25.34	\$903.44

### NAICS Covered Employment Quarterly Data 1st Quarter 2009

SUPER SECTOR	Employment	Change	
		Quarter	Year
Construction	10,955	-413	711
Education & Health Services	18,732	-135	404
Federal	2,972	31	88
Financial Activities	8,787	-125	-27
Information	2,134	-15	-31
Leisure & Hospitality	15,611	-497	-120
Local	25,828	214	1,381
Manufacturing	23,490	-1,021	-309
Natural Resources & Mining	12,427	-3,394	-2,274
Nonclassified	40	8	-24
Other Services	5,237	-69	-32
Professional & Business Services	10,441	-72	-206
State	6,595	4	220
Trade, Transportation & Utilities	34,420	-822	-120
<b>TOTAL</b>	<b>177,669</b>	<b>-6,306</b>	<b>-339</b>

### Size Class Employment Composition 1st Quarter 2009



\*Counties in WDA: Armstrong, Briscoe, Carson, Castro, Childress, Collingsworth, Dallam, Deaf Smith, Donley, Gray, Hall, Hansford, Hartley, Hemphill, Hutchinson, Lipscomb, Moore, Ochiltree, Oldham, Parmer, Potter, Randall, Roberts, Sherman, Swisher, & Wheeler