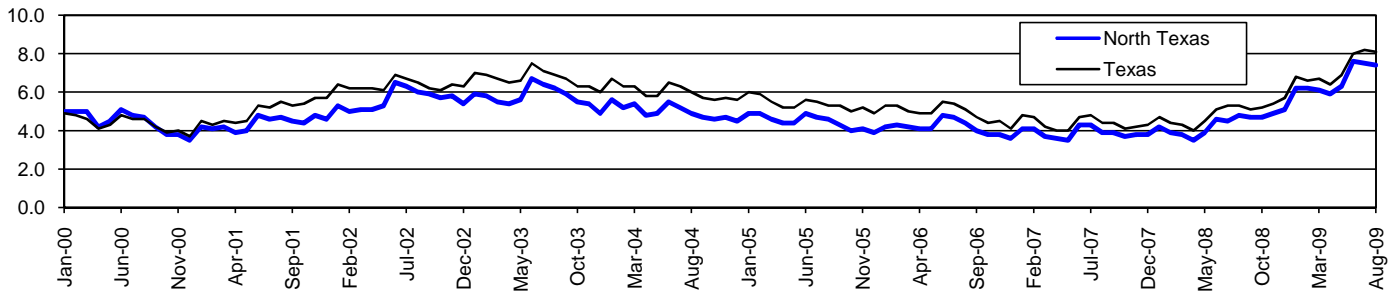


North Texas Workforce Development Area*

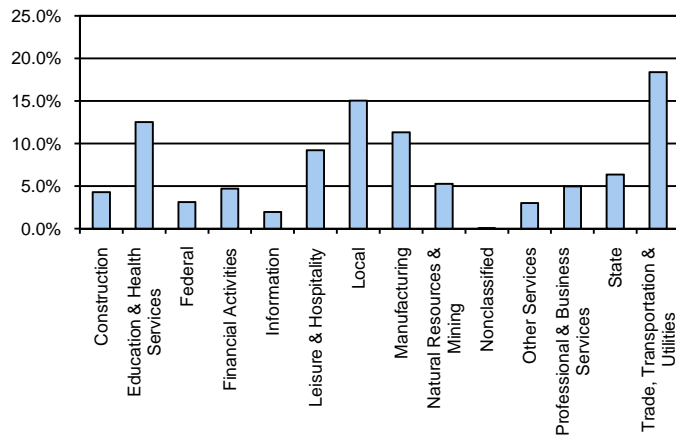
August 2009

North Texas WDA					Texas				
	CLF	Employed	Unemployed	Rate		CLF	Employed	Unemployed	Rate
Aug-09	116,193	107,625	8,568	7.4	Aug-09	12,061,355	11,079,403	981,952	8.1
Jul-09	116,817	108,011	8,806	7.5	Jul-09	12,136,607	11,138,224	998,383	8.2
Aug-08	112,746	107,386	5,360	4.8	Aug-08	11,750,624	11,129,768	620,856	5.3

Historical Unemployment Rates



North Texas WDA Industry Composition 1st Quarter 2009



Total WDA Claims

	Aug-09	Jul-09	Aug-08	OTY
Initial	716	678	701	15
Continued	4,431	4,788	1,837	2,594
Continued Claims for the Week of the 12th				
Continued	1,792	2,003	723	1,069

Texas Unemployment Insurance Claims Filed

	Aug-09	Jul-09	Aug-08	OTY
Initial	98,444	112,737	68,139	30,305
Continued	1,404,113	1,340,360	543,681	860,432
Continued Claims for the Week of the 12th				
Continued	295,488	313,137	125,839	169,649

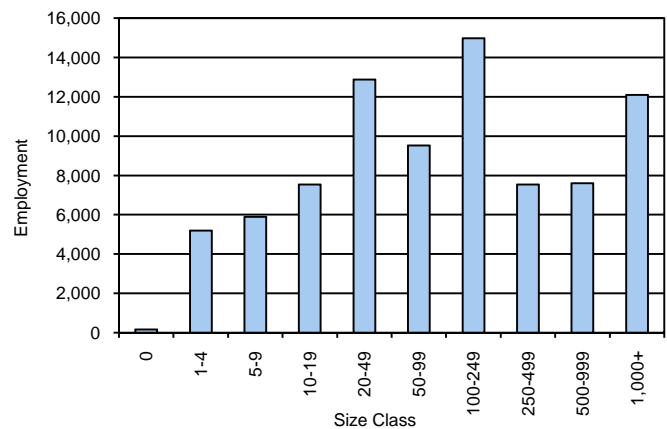
North Texas WDA Average Weekly Wage

	North Texas	WDA Qtr. Chg.	Texas
1st Quarter 2009	\$635.76	-\$63.52	\$884.74
4th Quarter 2008	\$699.28	WDA OTY Chg.	\$932.81
1st Quarter 2008	\$635.39	\$0.37	\$903.44

NAICS Covered Employment Quarterly Data 1st Quarter 2009

SUPER SECTOR	Employment	Change	
		Quarter	Year
Construction	3,552	-171	-177
Education & Health Services	10,431	-169	-142
Federal	2,605	-14	-21
Financial Activities	3,907	-28	-37
Information	1,608	-23	-67
Leisure & Hospitality	7,675	-59	50
Local	12,527	132	187
Manufacturing	9,427	-459	-1,320
Natural Resources & Mining	4,391	-740	-487
Nonclassified	20	11	1
Other Services	2,492	-166	-146
Professional & Business Services	4,143	-135	-49
State	5,300	97	131
Trade, Transportation & Utilities	15,344	-462	-265
TOTAL	83,422	-2,186	-2,342

Size Class Employment Composition 1st Quarter 2009



*Counties in WDA: Archer, Baylor, Clay, Cottle, Foard, Hardeman, Jack, Montague, Wichita, Wilbarger, & Young