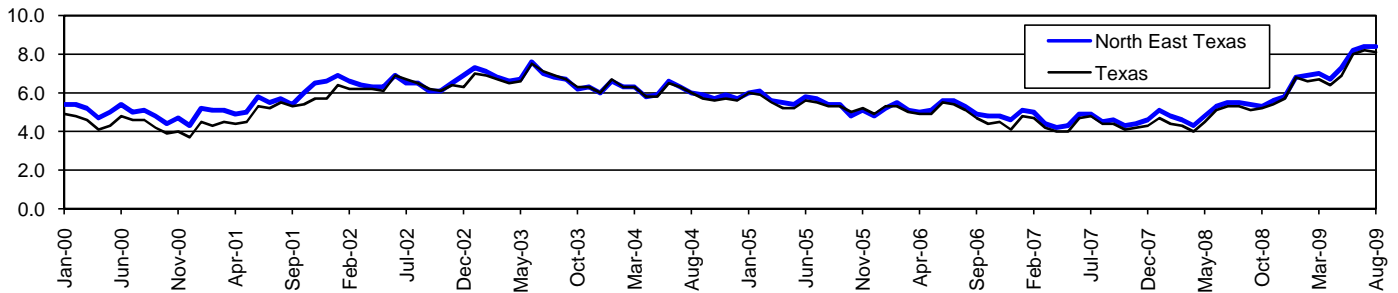


North East Texas Workforce Development Area*

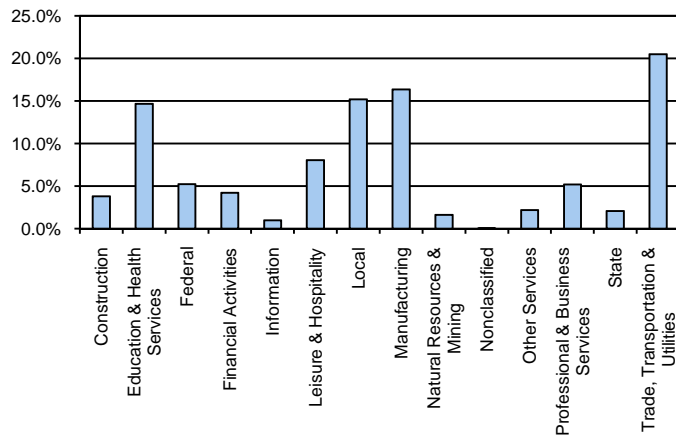
August 2009

North East Texas WDA					Texas				
	CLF	Employed	Unemployed	Rate		CLF	Employed	Unemployed	Rate
Aug-09	138,248	126,644	11,604	8.4	Aug-09	12,061,355	11,079,403	981,952	8.1
Jul-09	138,707	127,103	11,604	8.4	Jul-09	12,136,607	11,138,224	998,383	8.2
Aug-08	132,204	124,989	7,215	5.5	Aug-08	11,750,624	11,129,768	620,856	5.3

Historical Unemployment Rates



North East Texas WDA Industry Composition 1st Quarter 2009



Total WDA Claims

	Aug-09	Jul-09	Aug-08	OTY
Initial	1,097	1,268	637	460
Continued	7,548	7,591	3,552	3,996
Continued Claims for the Week of the 12th				
Continued	2,536	2,628	1,250	1,286

Texas Unemployment Insurance Claims Filed

	Aug-09	Jul-09	Aug-08	OTY
Initial	98,444	112,737	68,139	30,305
Continued	1,404,113	1,340,360	543,681	860,432
Continued Claims for the Week of the 12th				
Continued	295,488	313,137	125,839	169,649

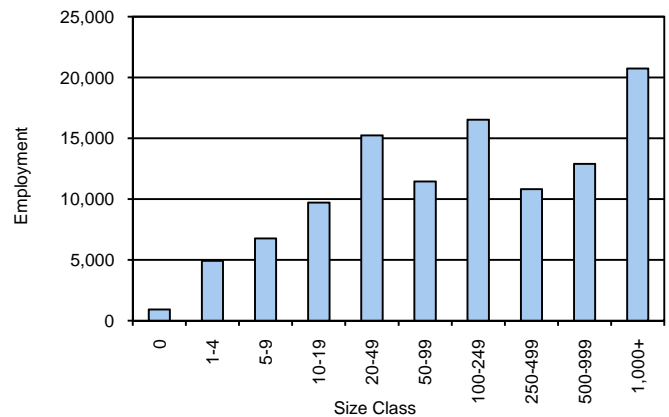
North East Texas WDA Average Weekly Wage

	North East Tx	WDA Qtr. Chg.	Texas
1st Quarter 2009	\$633.07	-\$64.22	\$884.74
4th Quarter 2008	\$697.29	WDA OTY Chg.	\$932.81
1st Quarter 2008	\$636.14	-\$3.07	\$903.44

NAICS Covered Employment Quarterly Data 1st Quarter 2009

SUPER SECTOR	Employment	Change	
		Quarter	Year
Construction	4,183	-795	-585
Education & Health Services	16,134	26	185
Federal	5,757	-23	444
Financial Activities	4,612	-34	-70
Information	1,056	0	22
Leisure & Hospitality	8,844	116	382
Local	16,684	-126	260
Manufacturing	17,986	-1,100	-1,887
Natural Resources & Mining	1,764	-3	88
Nonclassified	38	17	22
Other Services	2,403	-74	-54
Professional & Business Services	5,694	-168	-255
State	2,271	24	36
Trade, Transportation & Utilities	22,553	-1,001	-634
TOTAL	109,979	-3,141	-2,046

Size Class Employment Composition 1st Quarter 2009



*Counties in WDA: Bowie, Cass, Delta, Franklin, Hopkins, Lamar, Morris, Red River, & Titus