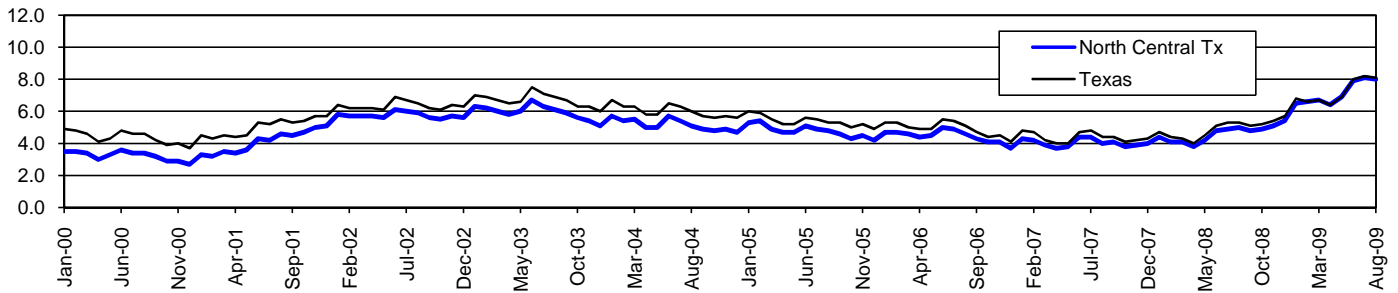


North Central Texas Workforce Development Area*

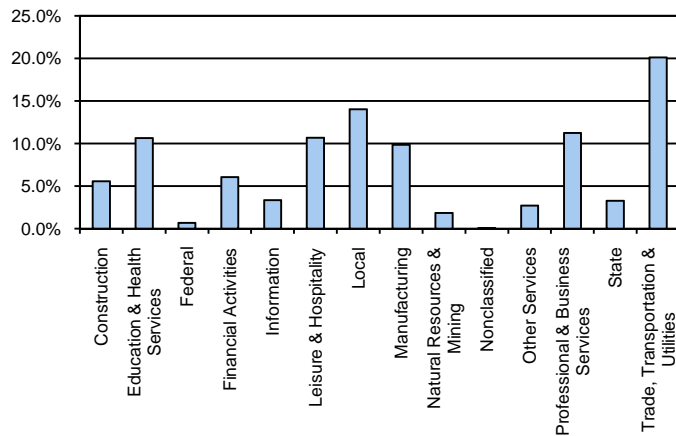
August 2009

| North Central Texas WDA | | | | | Texas | | | | |
|-------------------------|-----------|-----------|------------|------|---------------|------------|------------|------------|------|
| | CLF | Employed | Unemployed | Rate | | CLF | Employed | Unemployed | Rate |
| Aug-09 | 1,210,906 | 1,114,568 | 96,338 | 8.0 | Aug-09 | 12,061,355 | 11,079,403 | 981,952 | 8.1 |
| Jul-09 | 1,221,249 | 1,122,388 | 98,861 | 8.1 | Jul-09 | 12,136,607 | 11,138,224 | 998,383 | 8.2 |
| Aug-08 | 1,181,299 | 1,122,563 | 58,736 | 5.0 | Aug-08 | 11,750,624 | 11,129,768 | 620,856 | 5.3 |

Historical Unemployment Rates



North Central Texas WDA Industry Composition 1st Quarter 2009



Total WDA Claims

| | Aug-09 | Jul-09 | Aug-08 | OTY |
|--|--------|--------|--------|---------------|
| Initial | 7,742 | 9,004 | 5,245 | 2,497 |
| Continued | 37,737 | 38,310 | 19,179 | 18,558 |
| Continued Claims for the Week of the 12th | | | | |
| Continued | 23,051 | 25,257 | 10,366 | 12,685 |

Texas Unemployment Insurance Claims Filed

| | Aug-09 | Jul-09 | Aug-08 | OTY |
|--|-----------|-----------|---------|----------------|
| Initial | 98,444 | 112,737 | 68,139 | 30,305 |
| Continued | 1,404,113 | 1,340,360 | 543,681 | 860,432 |
| Continued Claims for the Week of the 12th | | | | |
| Continued | 295,488 | 313,137 | 125,839 | 169,649 |

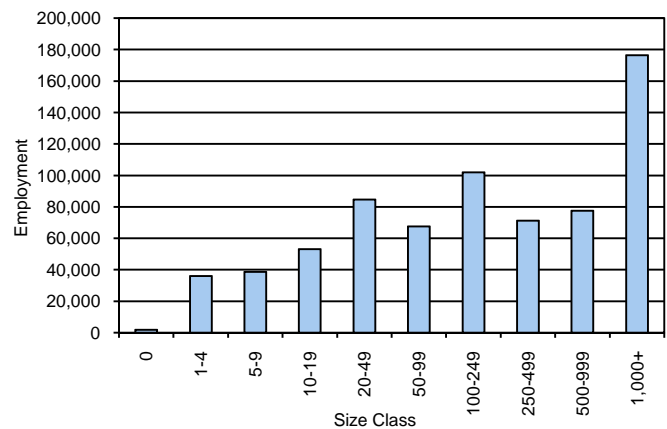
North Central Texas WDA Average Weekly Wage

| | North Central Tx | WDA Qtr. Chg. | Texas |
|-------------------------|------------------|---------------------|----------|
| 1st Quarter 2009 | \$828.86 | -\$39.12 | \$884.74 |
| 4th Quarter 2008 | \$867.98 | WDA OTY Chg. | \$932.81 |
| 1st Quarter 2008 | \$847.61 | -\$18.75 | \$903.44 |

NAICS Covered Employment Quarterly Data 1st Quarter 2009

| SUPER SECTOR | Employment | Change | |
|-----------------------------------|----------------|----------------|---------------|
| | | Quarter | Year |
| Construction | 39,436 | -3,919 | -5,420 |
| Education & Health Services | 75,362 | 653 | 4,190 |
| Federal | 4,779 | -13 | 164 |
| Financial Activities | 42,783 | -4,039 | -4,019 |
| Information | 23,744 | -678 | -1,546 |
| Leisure & Hospitality | 75,625 | -4,594 | -1,935 |
| Local | 99,374 | -783 | 3,935 |
| Manufacturing | 69,834 | -2,589 | -3,106 |
| Natural Resources & Mining | 12,982 | -1,467 | 178 |
| Nonclassified | 446 | 246 | 90 |
| Other Services | 19,212 | 209 | 156 |
| Professional & Business Services | 79,697 | -3,776 | -1,223 |
| State | 23,151 | 3,013 | 4,455 |
| Trade, Transportation & Utilities | 142,567 | -6,159 | -1,833 |
| TOTAL | 708,992 | -23,896 | -5,914 |

Size Class Employment Composition 1st Quarter 2009



*Counties in WDA: Collin, Denton, Ellis, Erath, Hood, Hunt, Johnson, Kaufman, Navarro, Palo Pinto, Parker, Rockwall, Somervell, & Wise

Available at <http://www.tracer2.com/>