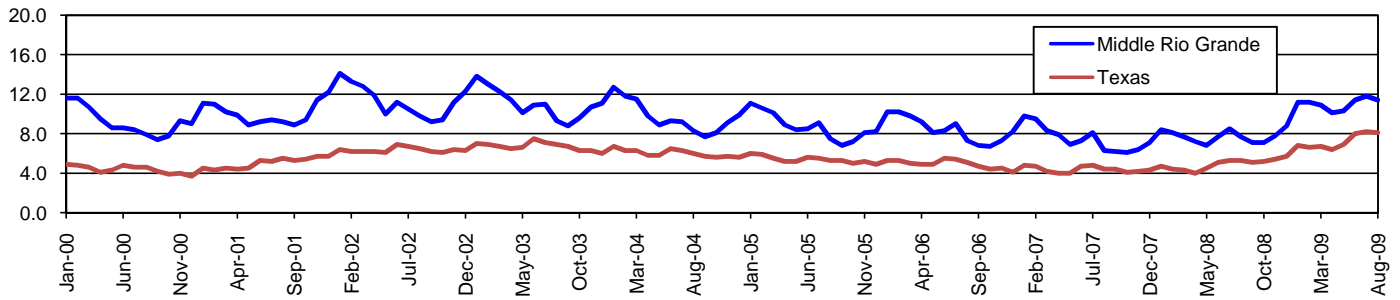


# Middle Rio Grande Workforce Development Area\*

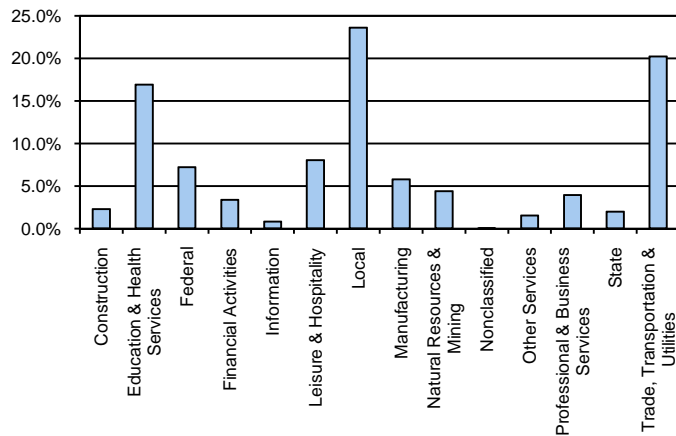
## August 2009

Middle Rio Grande WDA					Texas				
	CLF	Employed	Unemployed	Rate		CLF	Employed	Unemployed	Rate
<b>Aug-09</b>	70,679	62,636	8,043	11.4	<b>Aug-09</b>	12,061,355	11,079,403	981,952	8.1
<b>Jul-09</b>	71,028	62,627	8,401	11.8	<b>Jul-09</b>	12,136,607	11,138,224	998,383	8.2
<b>Aug-08</b>	65,647	60,603	5,044	7.7	<b>Aug-08</b>	11,750,624	11,129,768	620,856	5.3

### Historical Unemployment Rates



### Middle Rio Grande WDA Industry Composition 1st Quarter 2009



### Total WDA Claims

	Aug-09	Jul-09	Aug-08	OTY
<b>Initial</b>	557	838	391	<b>166</b>
<b>Continued</b>	6,362	6,788	3,550	<b>2,812</b>
<b>Continued Claims for the Week of the 12th</b>				
<b>Continued</b>	1,815	2,165	1,022	<b>793</b>

### Texas Unemployment Insurance Claims Filed

	Aug-09	Jul-09	Aug-08	OTY
<b>Initial</b>	98,444	112,737	68,139	<b>30,305</b>
<b>Continued</b>	1,404,113	1,340,360	543,681	<b>860,432</b>
<b>Continued Claims for the Week of the 12th</b>				
<b>Continued</b>	295,488	313,137	125,839	<b>169,649</b>

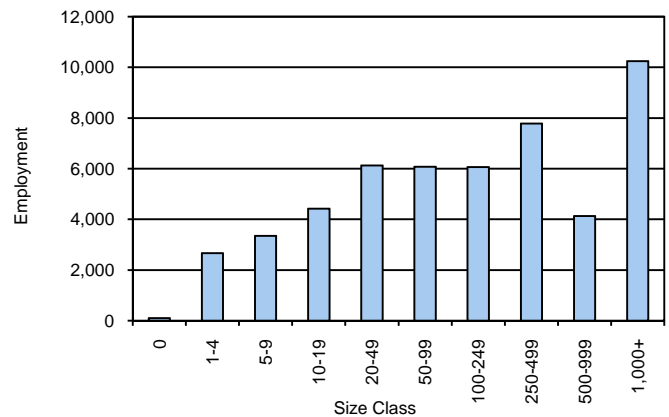
### Middle Rio Grande WDA Average Weekly Wage

	Middle Rio Grande	WDA Qtr. Chg.	Texas
<b>1st Quarter 2009</b>	\$538.35	-\$46.49	\$884.74
<b>4th Quarter 2008</b>	\$584.84	<b>WDA OTY Chg.</b>	\$932.81
<b>1st Quarter 2008</b>	\$529.63	\$8.72	\$903.44

### NAICS Covered Employment Quarterly Data 1st Quarter 2009

SUPER SECTOR	Employment	Change	
		Quarter	Year
Construction	1,154	-213	-106
Education & Health Services	8,626	-190	158
Federal	3,669	87	251
Financial Activities	1,716	-8	3
Information	413	-39	-20
Leisure & Hospitality	4,099	-56	31
Local	12,026	28	50
Manufacturing	2,937	-156	-304
Natural Resources & Mining	2,226	-192	-11
Nonclassified	9	7	2
Other Services	778	-39	-34
Professional & Business Services	1,996	78	234
State	1,009	-15	-8
Trade, Transportation & Utilities	10,306	-587	-382
<b>TOTAL</b>	<b>50,964</b>	<b>-1,295</b>	<b>-136</b>

### Size Class Employment Composition 1st Quarter 2009



\*Counties in WDA: Dimmit, Edwards, Kinney, LaSalle, Maverick, Real, Uvalde, Val Verde, & Zavala