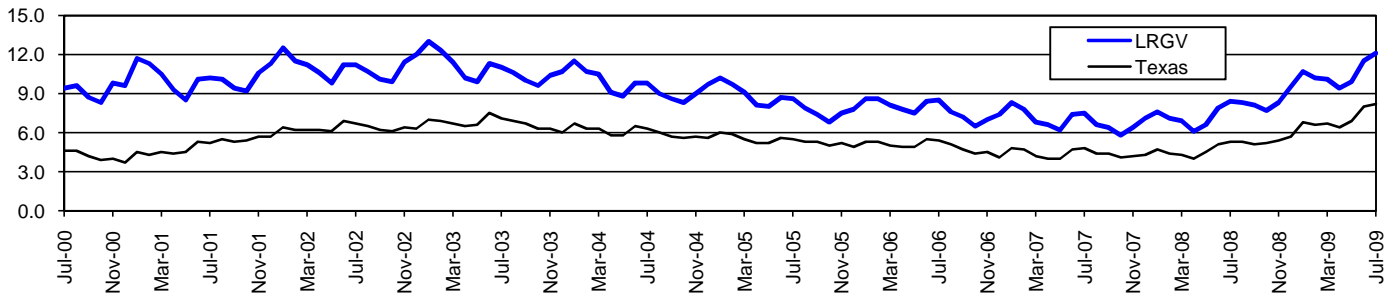


Lower Rio Grande Valley Workforce Development Area*

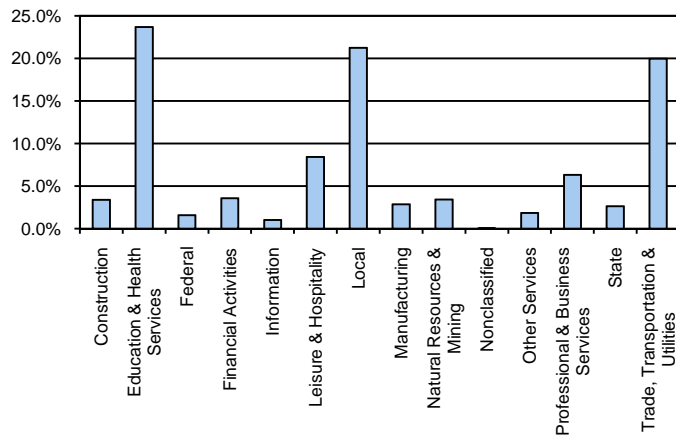
August 2009

Lower Rio Grande Valley WDA					Texas				
	CLF	Employed	Unemployed	Rate		CLF	Employed	Unemployed	Rate
Aug-09	332,623	292,896	39,727	11.9	Aug-09	12,061,355	11,079,403	981,952	8.1
Jul-09	332,017	291,988	40,029	12.1	Jul-09	12,136,607	11,138,224	998,383	8.2
Aug-08	310,302	284,641	25,661	8.3	Aug-08	11,750,624	11,129,768	620,856	5.3

Historical Unemployment Rates



Lower Rio Grande Valley WDA Industry Composition 1st Quarter 2009



Total WDA Claims

	Aug-09	Jul-09	Aug-08	OTY
Initial	3,850	4,527	2,997	853
Continued	35,497	35,813	22,789	12,708
Continued Claims for the Week of the 12th				
Continued	9,844	10,606	6,042	3,802

Texas Unemployment Insurance Claims Filed

	Aug-09	Jul-09	Aug-08	OTY
Initial	98,444	112,737	68,139	30,305
Continued	1,404,113	1,340,360	543,681	860,432
Continued Claims for the Week of the 12th				
Continued	295,488	313,137	125,839	169,649

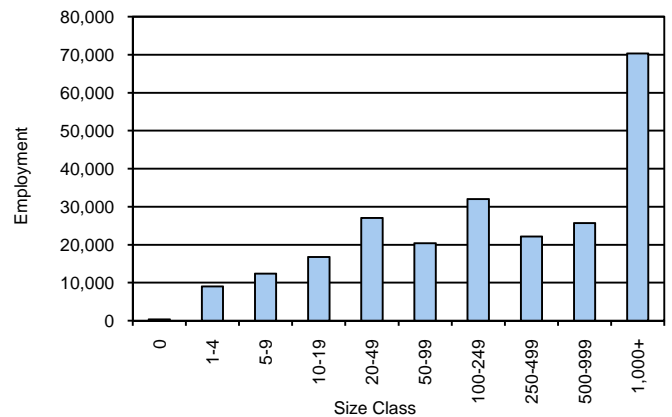
Lower Rio Grande Valley WDA Average Weekly Wage

	LRGV	WDA Qtr. Chg.	Texas
1st Quarter 2009	\$534.40	-\$36.31	\$884.74
4th Quarter 2008	\$570.71	WDA OTY Chg.	\$932.81
1st Quarter 2008	\$528.59	\$5.81	\$903.44

NAICS Covered Employment Quarterly Data 1st Quarter 2009

SUPER SECTOR	Employment	Change	
		Quarter	Year
Construction	7,978	-435	-1,213
Education & Health Services	55,884	-313	3,517
Federal	3,757	43	241
Financial Activities	8,429	-320	-640
Information	2,405	-3	69
Leisure & Hospitality	19,915	18	-198
Local	50,167	-17	1,563
Manufacturing	6,778	-515	-1,278
Natural Resources & Mining	8,043	768	-576
Nonclassified	129	102	57
Other Services	4,313	-213	-414
Professional & Business Services	14,910	-228	-719
State	6,185	8	215
Trade, Transportation & Utilities	47,152	-1,908	-1,852
TOTAL	236,045	-3,013	-1,228

Size Class Employment Composition 1st Quarter 2009



*Counties in WDA: Hidalgo, Willacy, & Starr

Available at <http://www.tracer2.com/>